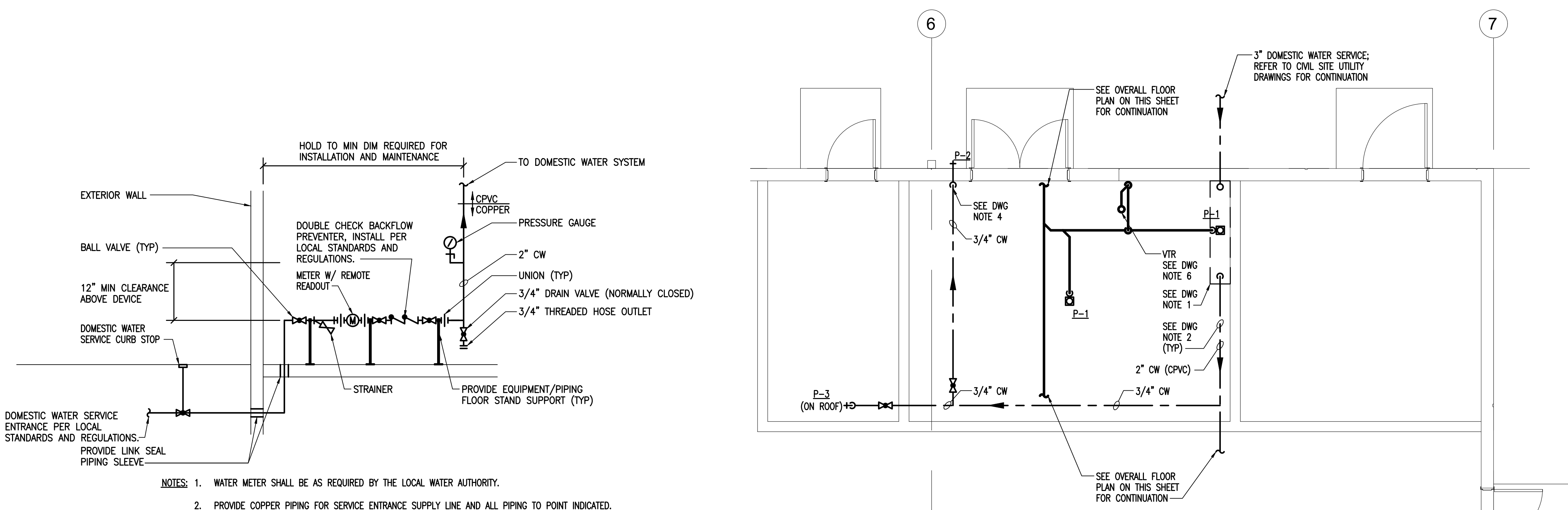


PLUMBING - BUILDING OVERALL FLOOR PLAN - WATER & DRAINAGE PIPING
SCALE: 1" = 20'-0"



WATER SERVICE ENTRANCE PIPING DIAGRAM
NO SCALE

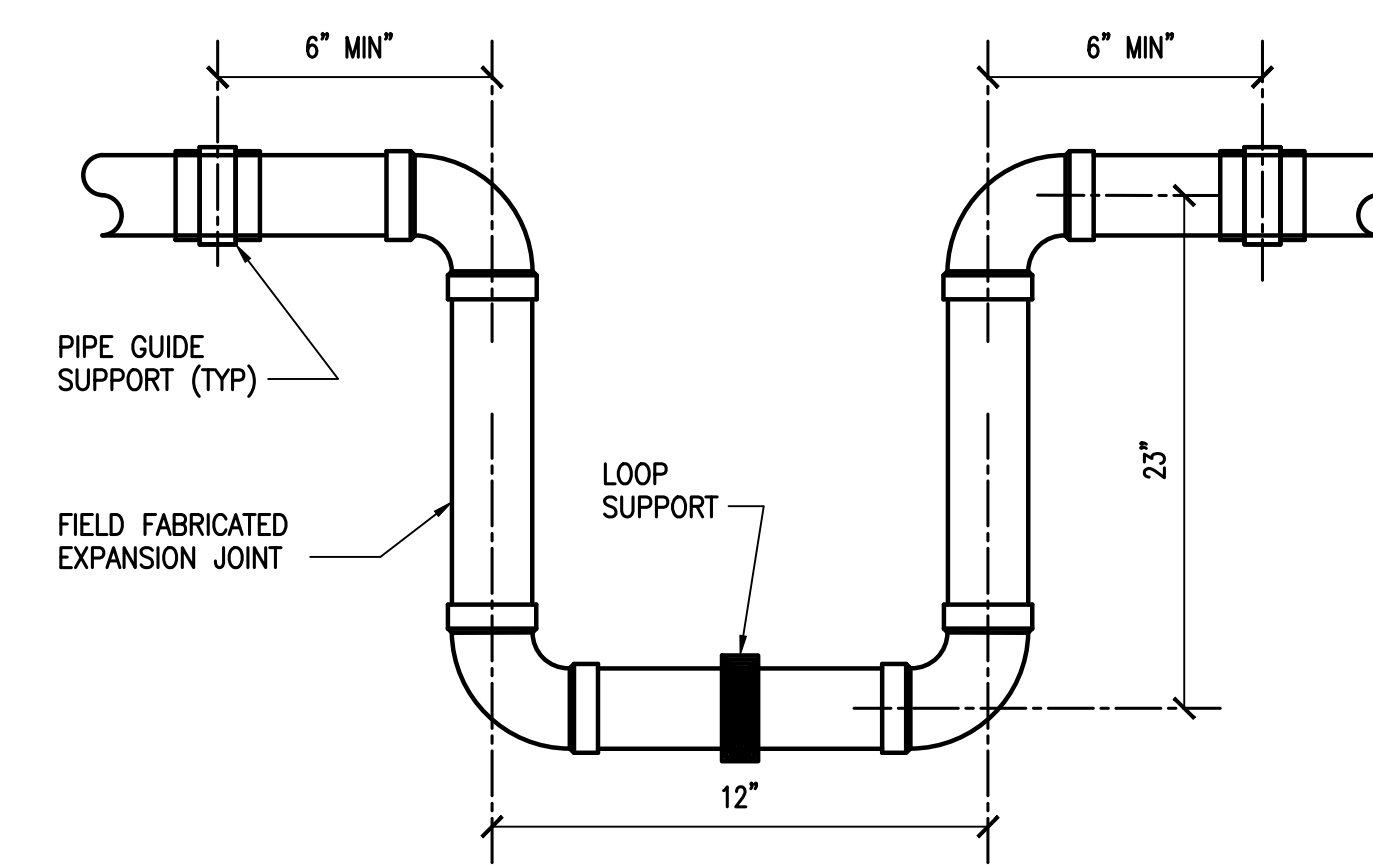
PLUMBING - ENLARGED FIRE PUMP ROOM AREA PLAN
SCALE: 1/4" = 1'-0"

LEGEND AND ABBREVIATIONS

—	SANITARY PIPING (SAN)
—	SANITARY VENT PIPING (SV)
—	STW
—	STORMWATER PIPING
—	COLD WATER PIPING (CW)
○	PIPE TURNING UP
○	PIPE TURNING DOWN
×	PIPE ANCHOR
≡	PIPE GUIDE
⊕	BALL VALVE
+	WALL HYDRANT
P-2	FIXTURE REFERENCE NUMBER
CONT	CONTINUATION
DFU	DRAINAGE FIXTURE UNIT
DWG	DRAWING
EQUIP	EQUIPMENT
FCO	FLOOR CLEANOUT
FD	FLOOR DRAIN
FF, EL	FINISHED FLOOR ELEVATION
GCO	GRADE CLEANOUT
INV, EL	INVERT ELEVATION
OD	OVERFLOW DRAIN
RD	ROOF DRAIN
TYP	TYPICAL
VTR	VENT THRU ROOF
WTR	WATER
#	NUMBER

GENERAL NOTES:

- ALL PLUMBING WORK SHALL CONFORM TO THE NEW YORK UNIFORM CONSTRUCTION CODES, 2020 NEW YORK PLUMBING CODE (2018 INTERNATIONAL PLUMBING CODE) AND SUBSEQUENT AMENDMENTS THERETO AS ADOPTED BY THE TOWN OF SUFFERN, NEW YORK AND SUBSEQUENT AMENDMENTS THERETO.
- DRAWINGS ARE DIAGRAMMATIC. COORDINATE ALL EQUIPMENT LOCATIONS AND PIPE ROUTING WITH OTHER TRADES AND ARCHITECTURAL DETAILS PRIOR TO INSTALLATION.
- VERIFY LOCATIONS, MOUNTING HEIGHTS, TRIM LOCATIONS, ETC. FOR ALL PLUMBING FIXTURES WITH THE ARCHITECT PRIOR TO INSTALLATION. P-2 DESIGNATES FIXTURE AND FIXTURE TRIM. MOUNTING OF ALL ADA FIXTURES AND RELATED TRIM TO MEET THE AMERICAN DISABILITIES ACT GUIDELINES AND ANSI REQUIREMENTS FOR PEOPLE WITH DISABILITIES.
- INTENT IS TO CONCEAL ALL PIPING IN WALLS/CHASE SPACE, BELOW FLOORS, AND ABOVE CEILINGS UNLESS OTHERWISE NOTED. INSTALL ALL WATER SUPPLY PIPING AT EXTERIOR WALLS ON THE INSIDE (WARM SIDE) OF THE BUILDING INSULATION. SEAL ALL PIPING PENETRATIONS THROUGH RATED ASSEMBLIES ACCORDINGLY. REFER TO ARCHITECTURAL DRAWINGS FOR FIRE AND SOUND RATED PARTITIONS, CEILINGS, AND FLOORS.
- THE PLUMBING CONTRACTORS UTILITY WORK SHALL INCLUDE, BUT NOT BE LIMITED TO, THE FOLLOWING:
DOMESTIC WATER SYSTEM - NEW DOMESTIC WATER SYSTEM. CONNECT NEW WATER PIPING AS SHOWN TO THE NEW WATER SERVICE.
SANITARY DRAINAGE SYSTEM - CONNECTS OF THE TWO (2) SANITARY BUILDING DRAINS PIPING AS SHOWN TO THE SANITARY BUILDING SEWERS.
STORM WATER DRAINAGE SYSTEM - CONNECT NEW ROOF DRAINAGE DOWNSPOUTS AND ROOF DRAIN CONDUCTORS TO THE STORM WATER BUILDING SEWER.



- NOTES:
- EXPANSION LOOP DIMENSIONS, BASIS OF DESIGN IS TWO (2) INCH CPVC PIPE, 50 DEGREE FAHRENHEIT TEMPERATURE CHANGE FOR A LENGTH OF PIPE BETWEEN ANCHORS 220 +/- FEET.
 - INSTALL EXPANSION LOOP AS CLOSELY AS POSSIBLE TO MID-POINT BETWEEN ANCHORS.
 - DO NOT INSTALL RIGID OR RESTRAINING SUPPORTS WITHIN LEG LENGTH OF LOOPS.
 - ALL PIPE AND FITTING CONNECTIONS SHALL BE SOLVENT CEMENT, DO NOT USE THREAD CONNECTIONS.
 - PIPE GUIDE SUPPORTS SHOULD RESTRICT LATERAL MOVEMENT AND DIRECT AXIAL MOVEMENT INTO THE LOOP.

EXPANSION LOOP DIAGRAM NO SCALE

DRAWING NOTES:

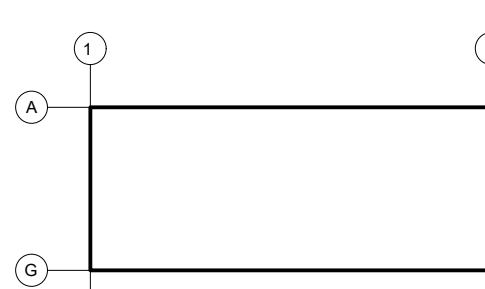
- PROVIDE BUILDING DOMESTIC WATER SUPPLY DISTRIBUTION PIPING AND SERVICE ENTRANCE EQUIPMENT AND CONNECTION TO BUILDING WATER SUPPLY AS SHOWN. SEE "DOMESTIC WATER SERVICE ENTRANCE PIPING DIAGRAM" ON DRAWING P-3.10. PRIOR TO THE START OF ANY NEW WATER SUPPLY SYSTEM WORK THIS CONTRACTOR IS RESPONSIBLE FOR VERIFICATION OF TIE-IN POINT.
- THE INSTALLATION OF ALL BUILDING WATER SUPPLY DISTRIBUTION PIPING SHALL BE ABOVE BOTTOM CHORD OF ROOF JOISTS.
- PROVIDE FIELD FABRICATED EXPANSION LOOP. INSTALL AND ANCHOR IN ACCORDANCE WITH THE PIPING MANUFACTURER'S WRITTEN INSTALLATION INSTRUCTIONS. SEE "EXPANSION LOOP DIAGRAM" ON THIS DRAWING.
- COORDINATE FINAL LOCATION OF WALL HYDRANT DROPS IN THE FIELD. INSTALL HYDRANT AT 18 INCHES ABOVE FINISH FLOOR AND PROVIDE BALL VALVE IN DROP TO WALL HYDRANT AT 5'-0" A.F.F. ALL PIPING DROPS TO HYDRANTS TO BE TYPE "L" COPPER.
- CONNECT SANITARY BUILDING DRAINAGE PIPING AS SHOWN TO SANITARY BUILDING SEWER. REFER TO SITE UTILITY PLANS FOR LOCATION. PRIOR TO THE START OF ANY NEW SANITARY DRAINAGE SYSTEM WORK THIS CONTRACTOR IS RESPONSIBLE FOR VERIFICATION OF INVERT ELEVATION AT TIE-IN POINT AND ROUTING WITH BUILDING FOOTINGS.
- ROUTE VENT PIPING EXPOSED ON WALL AND CONNECT TO VENT THROUGH ROOF AS SHOWN ON SANITARY RISER DIAGRAM.
- THE INSTALLATION OF FLOOR CLEANOUTS ALONG LOADING DOCK WALL SHALL BE OUT OF PATH OF FORK LIFT TRAFFIC. SEE "OFF-SET FLOOR CLEANOUT LOCATIONS DIAGRAM" ON DRAWING P-3.10.
- PRIMARY AND SECONDARY ROOF DRAIN STORM WATER CONDUCTORS SEE "PLUMBING - BUILDING OVERALL ROOF PLAN - ROOF DRAINAGE" ON DRAWING P-2.10 FOR PIPE SIZES AND ADDITIONAL INFORMATION.



SEAL



KEY PLAN



SUBMITTALS

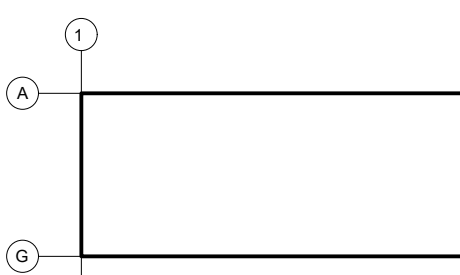
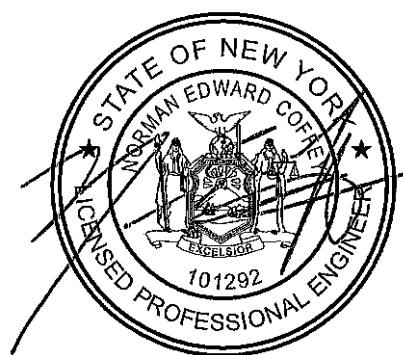
NO.	DATE	DESCRIPTION
02/09/2024		PERMIT ISSUE

PROJECT NO.
AS397-22-NY154

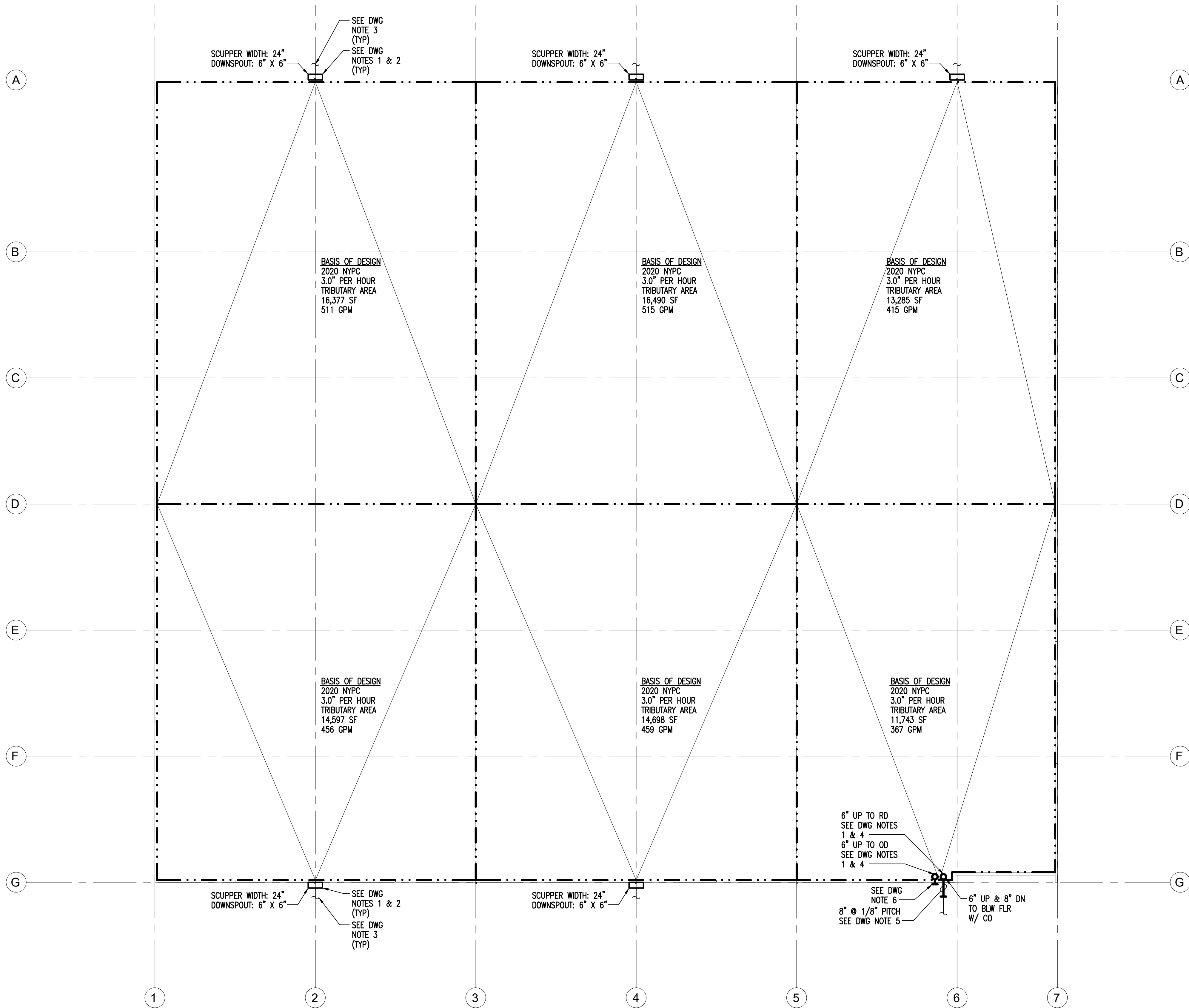
DRAWN BY
ZPC

SHEET TITLE
PLUMBING OVERALL FLOOR PLAN

SHEET NO.



NO.	DATE	DESCRIPTION
	02/09/2024	PERMIT ISSUE



PLUMBING – BUILDING OVERALL ROOF PLAN – ROOF DRAINAGE
SCALE: 1" = 20'-0"

DRAWING NOTES:

- DRAWING SHOWS ROOF DRAINAGE TRIBUTARY AREAS, BASIS OF DESIGN AND SIZING INFORMATION. REFER TO ROOF PLAN ON ARCHITECTURAL DRAWINGS FOR ROOF SLOPES AND FINAL LOCATIONS OF ALL ROOF DRAINS, SCUPPER BOXES AND DOWNSPOUTS.
- COMBINATION WALL SCUPPER BOX FOR BOTH PRIMARY AND SECONDARY (EMERGENCY) ROOF DRAINAGE. SEE "ROOF SCUPPER BOX DIAGRAM" ON DRAWING P-2.11 FOR SCUPPER BOX OPENING WIDTHS AND DOWNSPOUT SIZES, REFER TO THE ARCHITECTURAL DRAWINGS AND SPECIFICATIONS FOR FINAL SCUPPER BOX DIMENSIONS, MATERIALS AND INSTALLATION DETAILS.
- CONNECT STORM WATER DOWNSPOUT PIPING AS SHOWN TO STORM WATER BUILDING SEWER. REFER TO SITE UTILITY PLANS FOR LOCATION. PRIOR TO THE START OF ANY NEW DRAINAGE SYSTEM WORK THIS CONTRACTOR IS RESPONSIBLE FOR VERIFICATION OF INVERT ELEVATION AT TIE-IN POINT AND ROUTING WITH BUILDING FOOTINGS.
- ROOF DRAINS SEE "ROOF DRAIN & OVERFLOW DIAGRAM" ON DRAWING P-2.11. REFER TO ROOF PLANS ON ARCHITECTURAL DRAWINGS FOR FINAL LOCATIONS AND INSTALLATION DETAILS OF ALL ROOF DRAINS.
- CONNECT STORM WATER BUILDING DRAINAGE PIPING AS SHOWN TO STORM WATER BUILDING SEWER. REFER TO SITE UTILITY PLANS FOR LOCATION. SEE "STORM WATER STACK BASE DIAGRAM" ON DRAWING P-2.11. COORDINATE ALL RAINWATER CONDUCTOR CLEANOUT LOCATIONS IN THE FIELD WITH THE ARCHITECT PRIOR TO INSTALLATION. PRIOR TO THE START OF ANY NEW DRAINAGE SYSTEM WORK THIS CONTRACTOR IS RESPONSIBLE FOR VERIFICATION OF INVERT ELEVATION AT TIE-IN POINT AND ROUTING WITH BUILDING FOOTINGS.
- TERMINATE OVERFLOW DISCHARGE WITH DOWNSPOUT NOZZLE. DISCHARGE SHALL BE ABOVE GRADE, IN A LOCATION THAT NORMALLY BE OBSERVED BY THE BUILDING OCCUPANTS OR MAINTENANCE PERSONNEL. SEE "OVERFLOW DISCHARGE NOZZLE DIAGRAM" ON DRAWING P-2.11.
- SEE DRAWING P-1.10 FOR GENERAL NOTES, LEGEND AND ABBREVIATIONS.



PROJECT TITLE
**ROCKLAND
LOGISTICS
CENTER BLDG 3**

OWNER
BROOKFIELD PROPERTIES
1 MEADOWLANDS PLAZA, SUITE 802
EAST RUTHERFORD, NJ 07073

ARCHITECT
ADB / DESIGN SERVICES LLC
44 SOUTH BROADWAY, SUITE 1003
WHITE PLAINS, NY 10601

CIVIL ENGINEER
DYNAMIC ENGINEERING CONSULTANTS
1904 MAIN STREET
LAKE COMO, NJ 07719

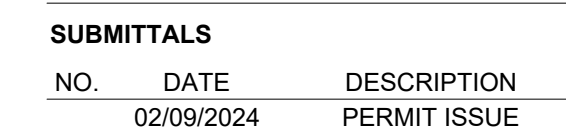
STRUCTURAL ENGINEER
ADB STRUCTURAL ENGINEERING
325 S. ALABAMA ST., SUITE 200
INDIANAPOLIS, IN 46204

MECHANICAL ENGINEER
NATIONAL DESIGN BUILD SERVICES
11840 BORMAN DRIVE
MARYLAND HEIGHTS, MO 63146

ELECTRICAL ENGINEER
FXB ENGINEERING
5 CHRISTY DRIVE, SUITE 307
CHADDS FORD, PA 19317

PLUMBING ENGINEER
MCCARTHY ENGINEERING
2500 E HIGH STREET, SUITE 630
POTTSTOWN, PA 19464

FIRE PROTECTION ENGINEER
S.A. COMUNALE
2900 NEWPARK DRIVE
BARBERTON, OH 44203

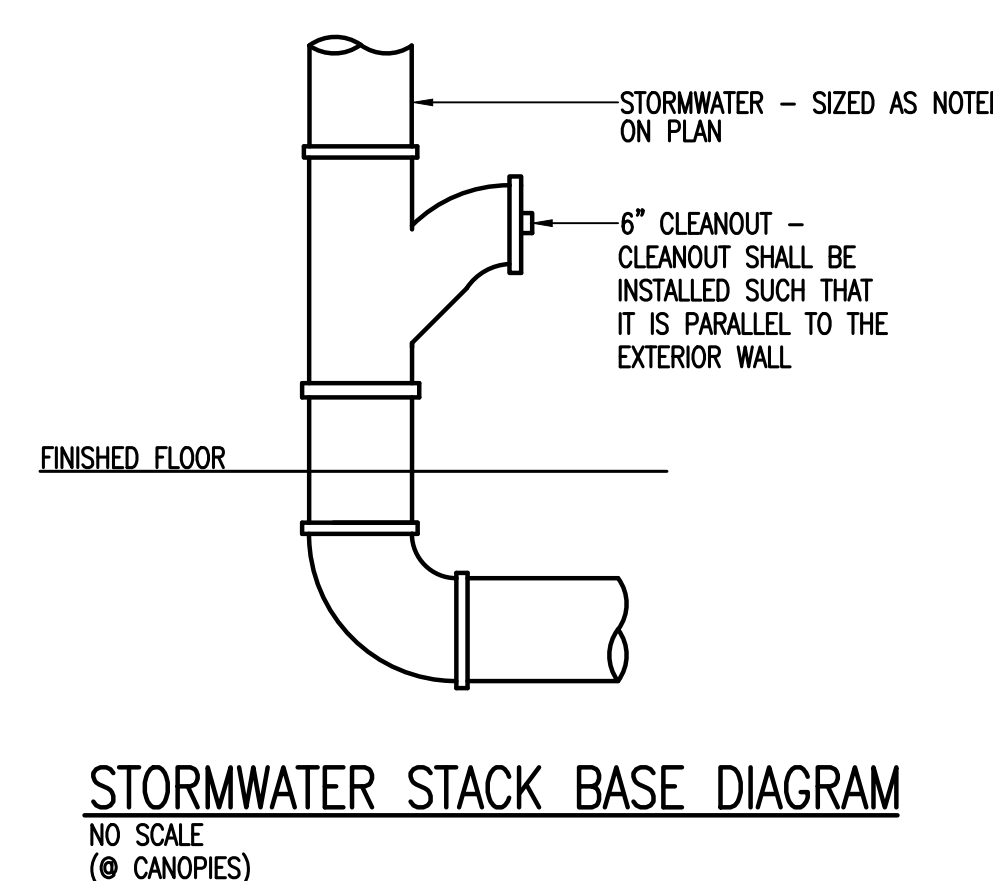
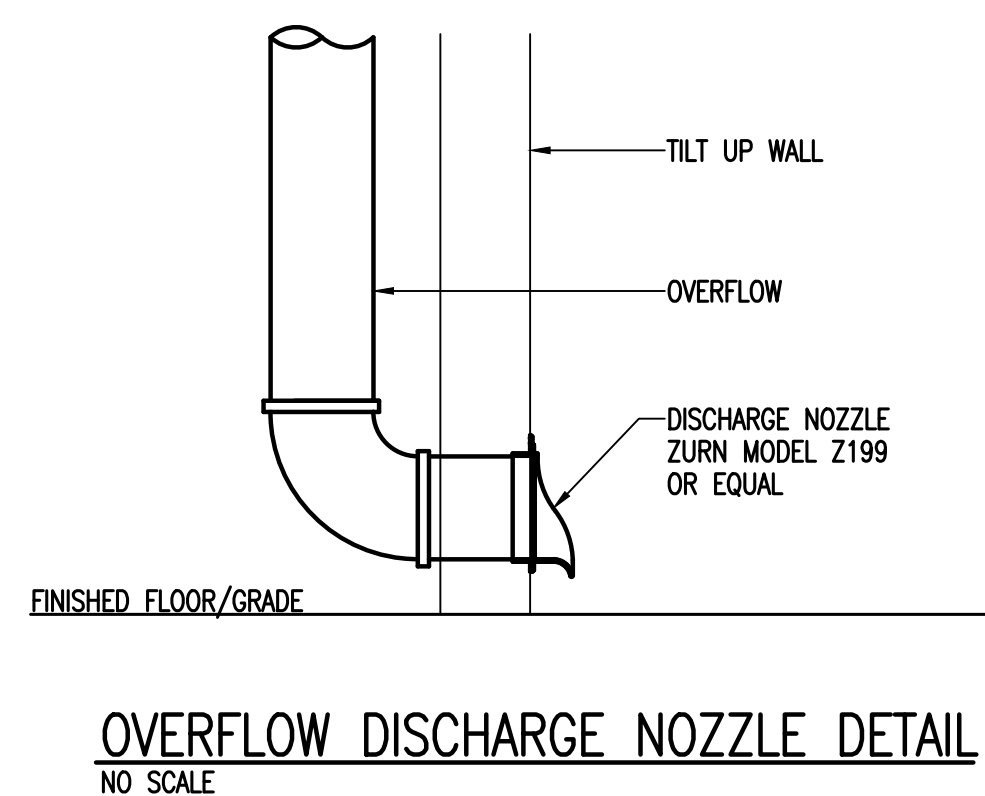


PROJECT NO.	DRAWN BY
AS397-22 NY154	ZPC

SHEET TITLE
PLUMBING
ROOF
DRAINAGE
DIAGRAMS

SHEET NO.

P-2.11





PROJECT TITLE
**ROCKLAND
LOGISTICS
CENTER BLDG 3**

OWNER
BROOKFIELD PROPERTIES
1 MEADOWLANDS PLAZA, SUITE 802
EAST RUTHERFORD, NJ 07073

ARCHITECT
ADB / DESIGN SERVICES LLC
44 SOUTH BROADWAY, SUITE 1003
WHITE PLAINS, NY 10601

CIVIL ENGINEER
DYNAMIC ENGINEERING CONSULTANTS
1904 MAIN STREET
LAKE COMO, NJ 07719

STRUCTURAL ENGINEER
ADB STRUCTURAL ENGINEERING
325 S. ALABAMA ST., SUITE 200
INDIANAPOLIS, IN 46204

MECHANICAL ENGINEER
NATIONAL DESIGN BUILD SERVICES
11840 BORMAN DRIVE
MARYLAND HEIGHTS, MO 63146

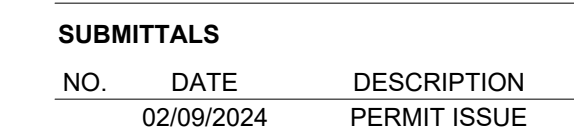
ELECTRICAL ENGINEER
FXB ENGINEERING
5 CHRISTY DRIVE, SUITE 307
CHADDS FORD, PA 19317

PLUMBING ENGINEER
MCCARTHY ENGINEERING
2500 E HIGH STREET, SUITE 630
POTTSTOWN, PA 19464

FIRE PROTECTION ENGINEER
S.A. COMUNALE
2900 NEWPARK DRIVE
BARBERTON, OH 44203

KEY PLAN

The key plan shows a rectangular area. The top-left corner is marked with a circle containing the number '1'. The top-right corner is marked with a circle containing the number '7'. The bottom-left corner is marked with a circle containing the letter 'A'. The bottom-right corner is marked with a circle containing the letter 'G'. The rectangle is defined by solid lines, and the corner markers are positioned at the intersections of these lines.

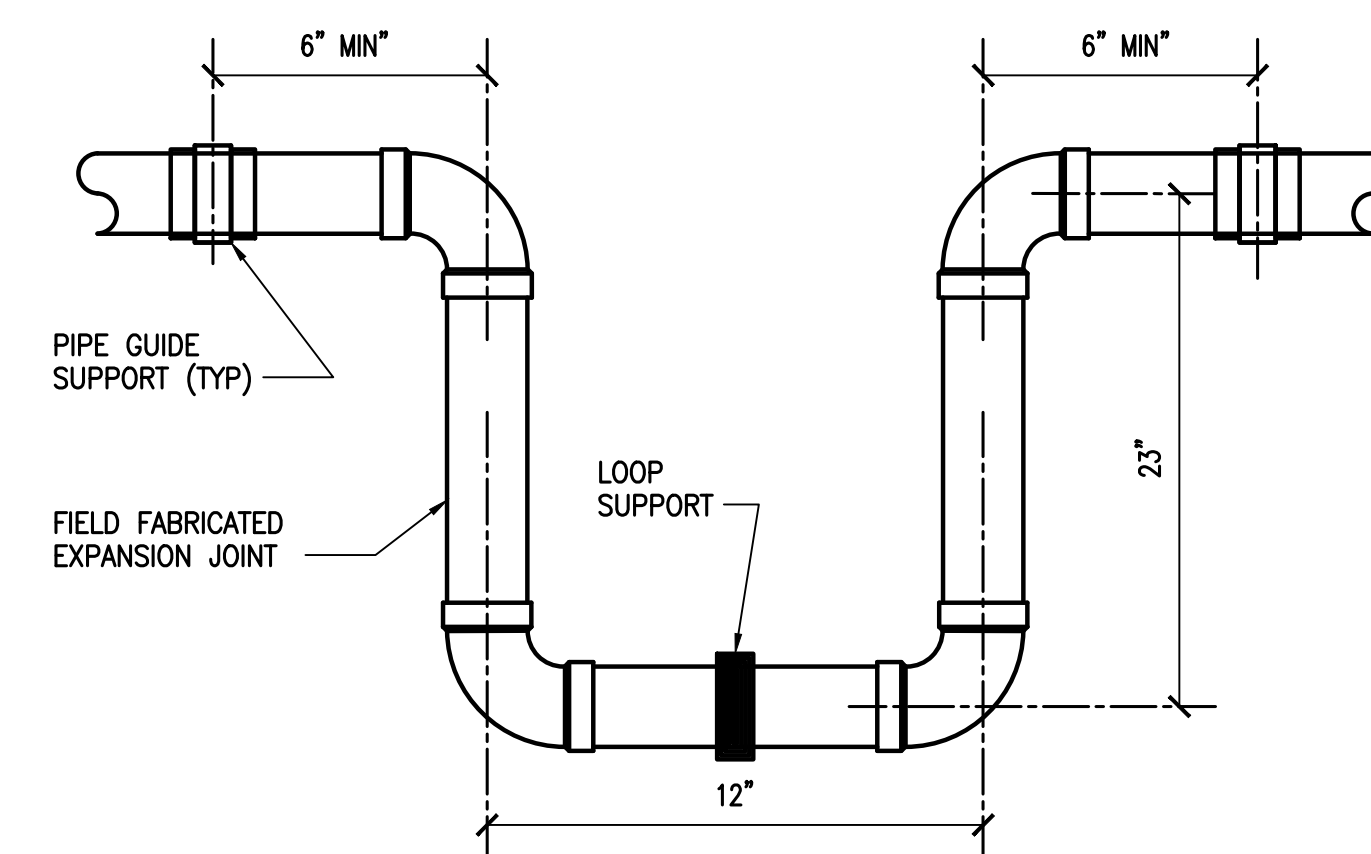
[illegible]

PROJECT NO.	DRAWN BY
AS397-22 NY154	ZBC

SHEET TITLE
**PLUMBING
DIAGRAMS**

SHEET NO.

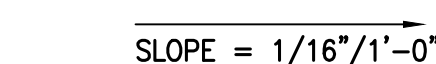
P-3.10



NOTES:

1. EXPANSION LOOP DIMENSIONS, BASIS OF DESIGN IS TWO (2) INCH CPVC PIPE, 50 DEGREE FAHRENHEIT TEMPERATURE CHANGE FOR A LENGTH OF PIPE BETWEEN ANCHORS 220 +/- FEET.
2. INSTALL EXPANSION LOOP AS CLOSELY AS POSSIBLE TO MID-POINT BETWEEN ANCHORS.
3. DO NOT INSTALL RIGID OR RESTRAINING SUPPORTS WITHIN LEG LENGTH OF LOOPS.
4. ALL PIPE AND FITTING CONNECTIONS SHALL BE SOLVENT CEMENT, DO NOT USE THREAD CONNECTIONS.
5. PIPE GUIDE SUPPORTS SHOULD RESTRICT LATERAL MOVEMENT AND DIRECT AXIAL MOVEMENT INTO THE LOOP.

EXPANSION LOOP DIAGRAM



SANITARY RISER DIAGRAM
NO. SCALE

GENERAL SANITARY RISER NOTES

1. ALL SANITARY PIPING LESS THAN 3" SHALL BE SLOPED AT 1/4"/1'-0". ALL SANITARY PIPING LARGER THAN 3" BUT LESS THAN 8" SHALL BE AT 1/8"/1'-0". ALL SANITARY PIPING 8" OR LARGER SHALL BE SLOPED AT 1/16"/1'-0" (IN ACCORDANCE WITH THE PLUMBING CODE AND ALL LOCAL REQUIREMENTS).
2. ALL SANITARY PIPING LOCATED BELOW THE FLOOR SLAB SHALL BE NO LESS THAN 2".
3. ALL VENT THROUGH THE ROOF PENETRATIONS (VTR'S) SHALL BE LOCATED NO LESS THAN 30'-0" FROM ALL EXISTING OR NEW OUTSIDE AIR INTAKES. COORDINATE WITH MECHANICAL CONTRACTOR IN THE FIELD.

