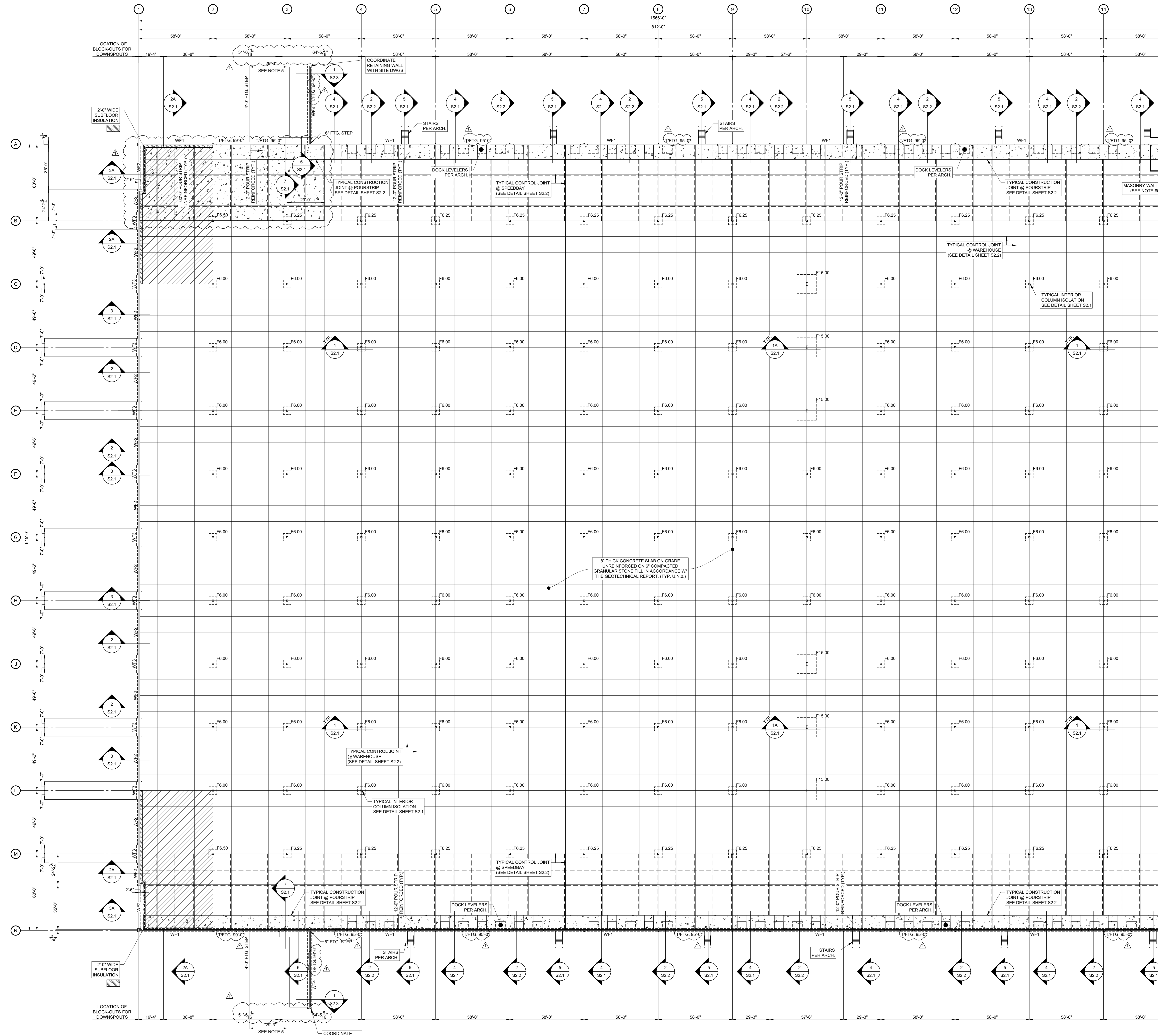


NO.	DATE	DESCRIPTION
11-29-23	75% PROGRESS SET	
12-22-23	90% PROGRESS SET	
01-26-24	95% PROGRESS SET	
02-09-24	PERMIT SET	
03-08-24	REVISIONS 1	



AREA "A" FOUNDATION PLAN

SCALE: 1" = 30'

- NOTES:
- FINISH FLOOR REFERENCE ELEVATION = 100'-0" (EL. +315.50' VERIFY WITH CIVIL DWGS.)
 - TOP OF INTERIOR COLUMN FOOTING ELEVATION = 98'-10" U.N.O.
 - TOP OF EXTERIOR FOOTING ELEVATION = 99'-0" U.N.O.
 - COORDINATE ALL DOCK OPENINGS AND LOCATIONS WITH ARCHITECTURAL DRAWINGS.
 - VERIFY LOCATION OF ALL FOOTING STEPS WITH PANEL DRAWINGS PRIOR TO CASTING FOOTINGS.
 - PROVIDE 8" CMU WALLS REINFORCED WITH #4 @ 24" O.C. SEE DETAIL SHEET S2.3.
 - INDICATES 10 MIL. VAPOR BARRIER UNDER SLAB ON GRADE.
 - INDICATES TO PROVIDE LOAD PLATE BASKETS IN SPEED BAYS ONLY.
 - INDICATES POUR STRIP, COORDINATE DIMENSIONS AND REINFORCEMENT WITH PLAN.

WALL FOOTING SCHEDULE

MARK	FOOTING SIZE W x L x D	FOOTING REINFORCEMENT
WF1	2'-6 1/2" x 3'-0"	6 #4 CONT. TOP & BOT. W/ #3 TIES @ 48" O.C.
WF2	2'-9 1/2" x 3'-0"	6 #4 CONT. TOP & BOT. W/ #4 TIES @ 48" O.C.
WF3	4'-3 1/2" x 3'-0"	9 #4 CONT. TOP & BOT. W/ #4 TIES @ 24" O.C.
WF4		SEE DETAIL 1-S2.3

COLUMN FOOTING SCHEDULE

MARK	FOOTING SIZE W x L x D	FOOTING REINFORCEMENT
F6.00	6'-0" x 6'-0" x 1'-2"	6 - #6 E.W. BOT.
F6.25	6'-0" x 6'-0" x 1'-2"	6 - #6 E.W. BOT.
F6.50	6'-6" x 6'-6" x 1'-2"	7 - #6 E.W. BOT.
F15.00	15'-0" x 15'-0" x 2'-6"	18 - #8 E.W. TOP & BOT.

