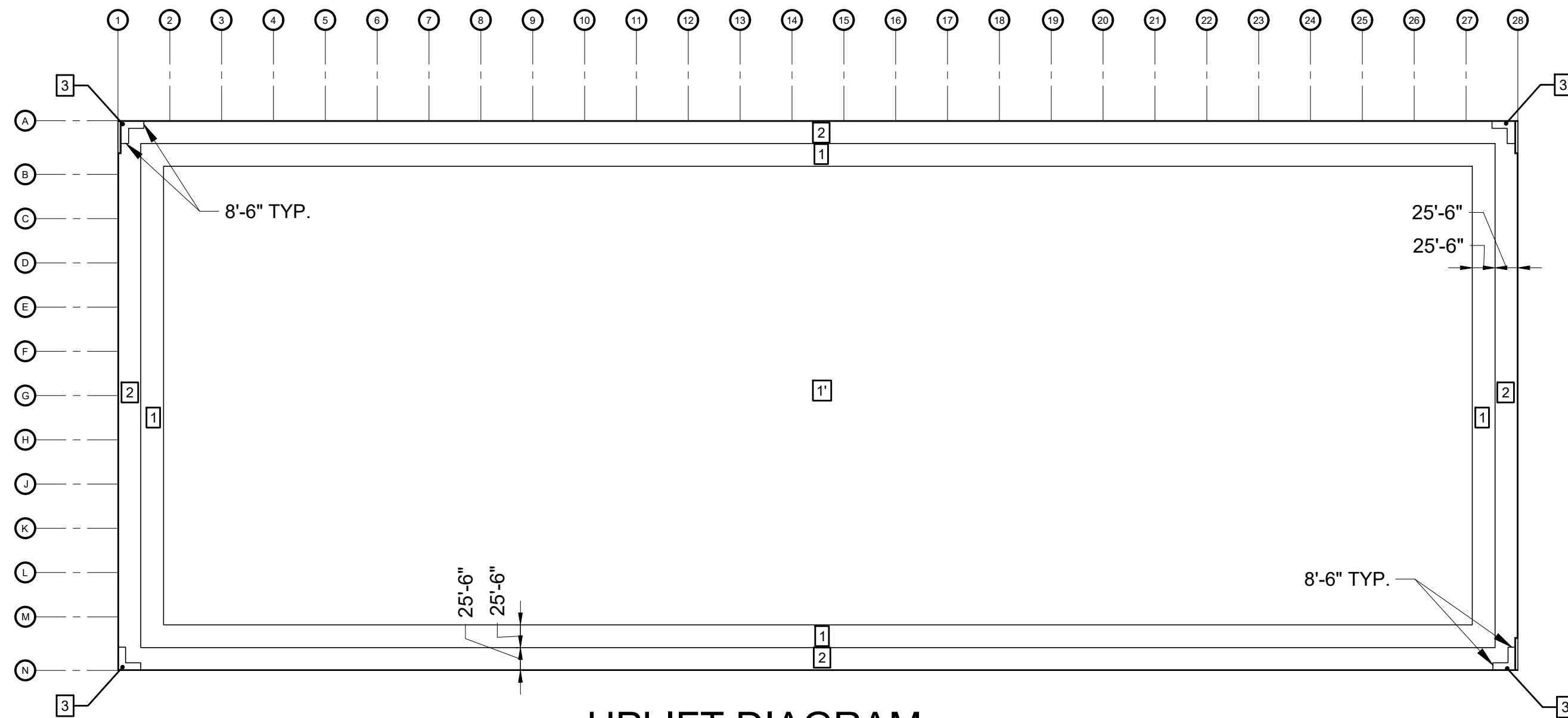


**UPLIFT DIAGRAM
ON JOIST GIRDER - MWFRS**
SCALE: NONE

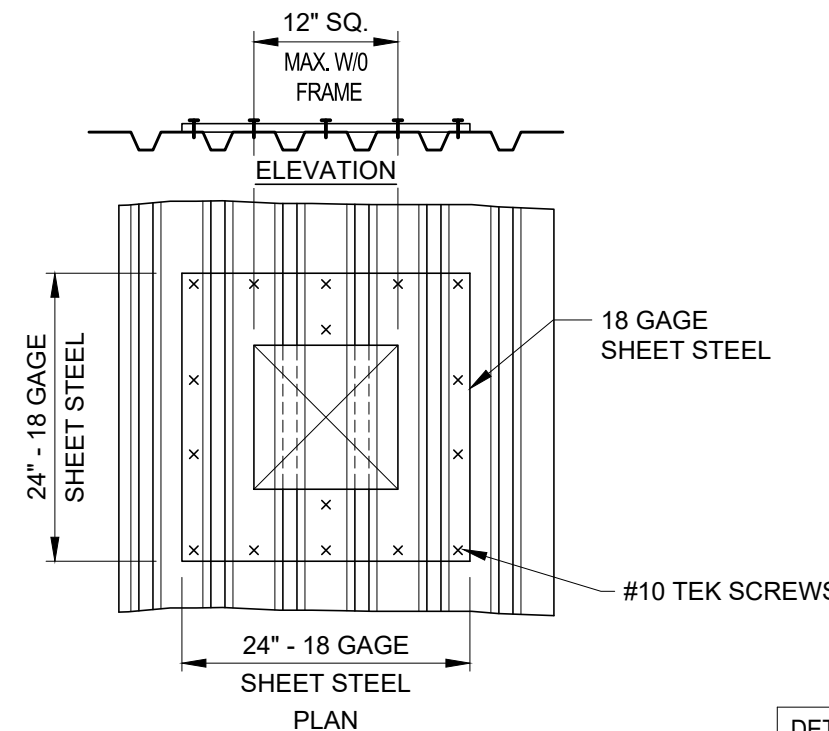
NOTE:
1. LOADS INDICATED REPRESENT NET MWFRS SERVICE UPLIFT VALUES.



**UPLIFT DIAGRAM
ON JOISTS - C&C**
SCALE: NONE

NOTE:
1. LOADS INDICATED IN TABLE REPRESENT NET COMPONENTS & CLADDING SERVICE UPLIFT VALUES. VARY WITH ZONE (SEE UPLIFT DIAGRAM ON JOISTS - C&C).
1.1. USE PRESSURE VALUE BELOW OBTAINED UTILIZING ALLOWABLE EFFECTIVE AREA AS DEFINED BY ASCE 7 CHAPTER 30 FOR JOIST UPLIFT.

COMPONENTS & CLADDING NET UPLIFT								
NET SERVICE LEVEL SURFACE PRESSURES (PSF)								
ROOF ZONE \ AREA	10 sf	20 sf	50 sf	100 sf	200 sf	350 sf	500 sf	1000 sf
NEGATIVE ZONE 1	-30.0	-27.8	-24.8	-22.6	-20.3	-18.5	-17.4	-17.4
NEGATIVE ZONE 1*	-15.6	-15.6	-15.6	-15.6	-12.8	-10.6	-9.2	-6.5
NEGATIVE ZONE 2	-40.9	-38.0	-34.2	-31.3	-28.4	-26.1	-24.6	-24.6
NEGATIVE ZONE 3	-57.2	-51.4	-43.8	-38.0	-32.2	-27.6	-24.6	-24.6

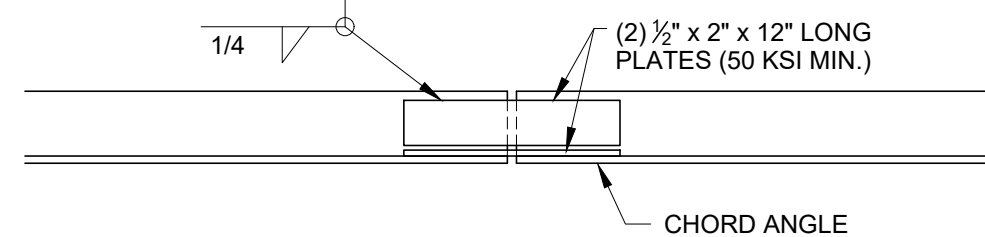


ROOF DECK OPENING ≤ 12"
SCALE: NO SCALE

NOTE: WHERE DECK OPENINGS ARE GREATER THAN 12" ON ANY SIDE PROVIDE L 4x4x1/4" FRAME @ EXHAUST FANS.

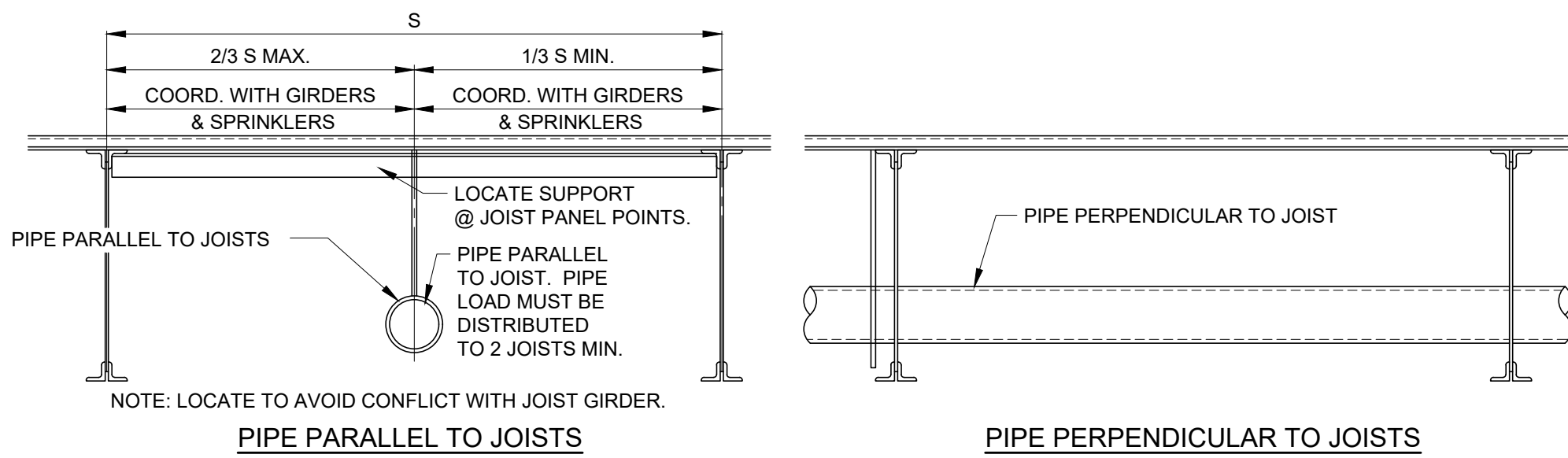
**DECK CHORD ANGLE
ATTACHMENT PLAN**
SCALE: NONE

NOTES:
1) ALL CHORD ANGLES TO HAVE YIELD STRENGTH OF 50 KSI MIN.



**TYPICAL DIAPHRAM
CHORD SPLICE**
SCALE: NONE

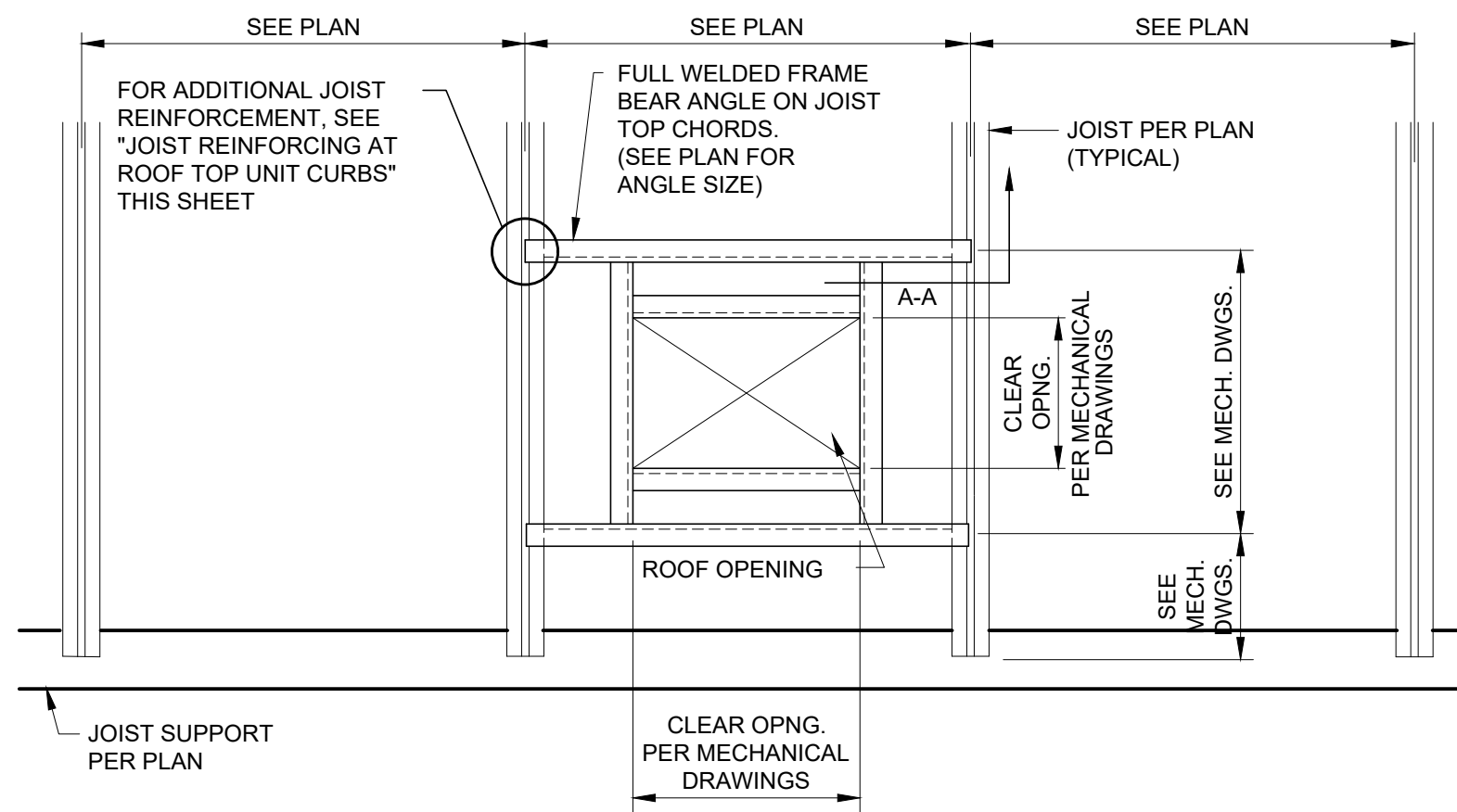
DETAIL BOOK REF. S2.18 1/27/2023



SPRINKLER MAIN SUPPORT DETAIL
SCALE: NO SCALE

NOTES:
- WHEN PARALLEL TO JOISTS 4" AND SMALLER PIPE MAY HANG FROM SINGLE JOIST, BUT MUST SPREAD OUT SO THAT THE SAME JOIST IS NOT AFFECTED BY MORE THAN ONE PIPE.
- WHEN PARALLEL TO JOISTS 6" PIPES SHOULD BE LOCATED AS SHOWN IN SPACE BETWEEN JOISTS AND SPREAD OUT SO THAT THE SAME JOIST IS NOT AFFECTED BY MORE THAN ONE PIPE. EXCEPTION: IF PIPE LOCATIONS ARE PROVIDED DURING DESIGN LOADS CAN BE MODIFIED TO ACCOUNT FOR PIPES.
- PIPES GANGED TOGETHER MUST BE REVIEWED BY EOR FOR SPECIFIC LOADS PRIOR TO JOIST FABRICATION.
- DO NOT SPACE HANGERS MORE THAN 15' APART.
- WHEN PERPENDICULAR, PIPES LARGER THAN 6"Ø SHALL BE REVIEWED BY EOR FOR SPECIFIC LOADS PRIOR TO JOIST FABRICATION.
- DO NOT HANG WITH A BEAM CLAMP FROM BOTTOM CHORD OF JOIST OR GIRDER. BOTTOM CHORD HANGERS MUST BE CONCENTRIC. IF USED, HANGERS SHALL BE LOCATED WITHIN 3" OF PANEL POINTS OR JOIST SHALL BE REINFORCED PER TYP. REIN. AT POINT LOADS DETAIL.
- DO NOT SUPPORT MAINS FROM JOISTS THAT ALSO SUPPORT MECHANICAL EQUIPMENT WITHOUT E.O.R. REVIEW.

DETAIL BOOK REF. S2.28 8/24/2023



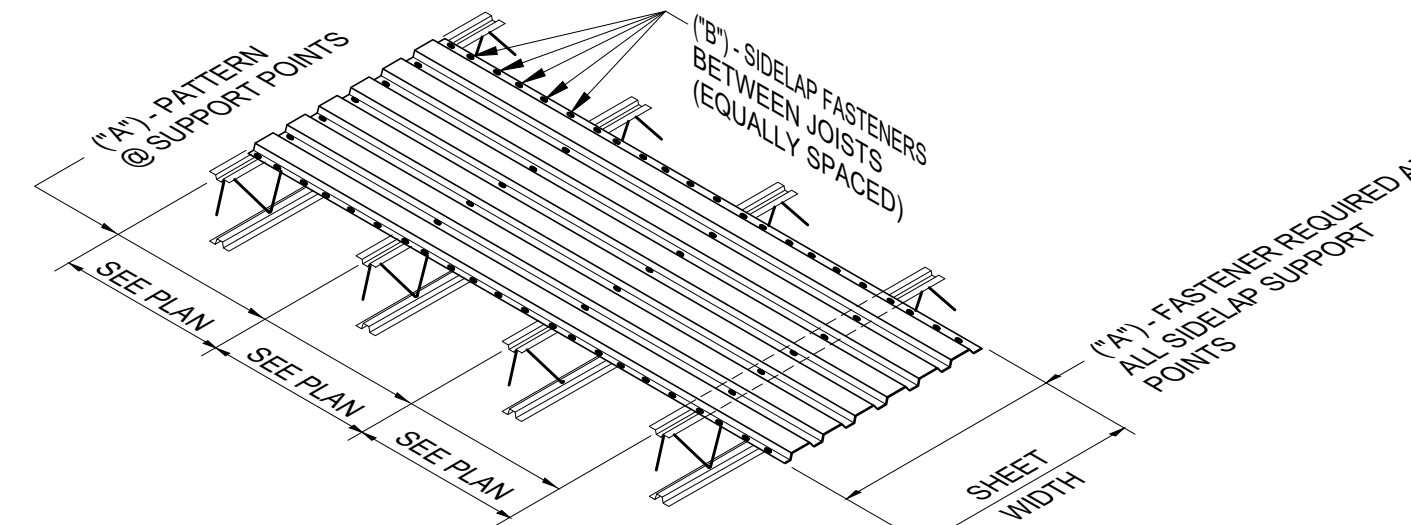
TYPICAL ROOF OPENING
SCALE: NO SCALE

NOTE: THE UNIT IS SUPPORTED BY THE UNIT CURB WHICH MUST BE DESIGNED TO SPAN TO SUPPORTING MEMBERS.

DETAIL BOOK REF. S2.23-N 1/27/2023

**WELDED ROOF DECK ATTACHMENT
FASTENER SCHEDULE**

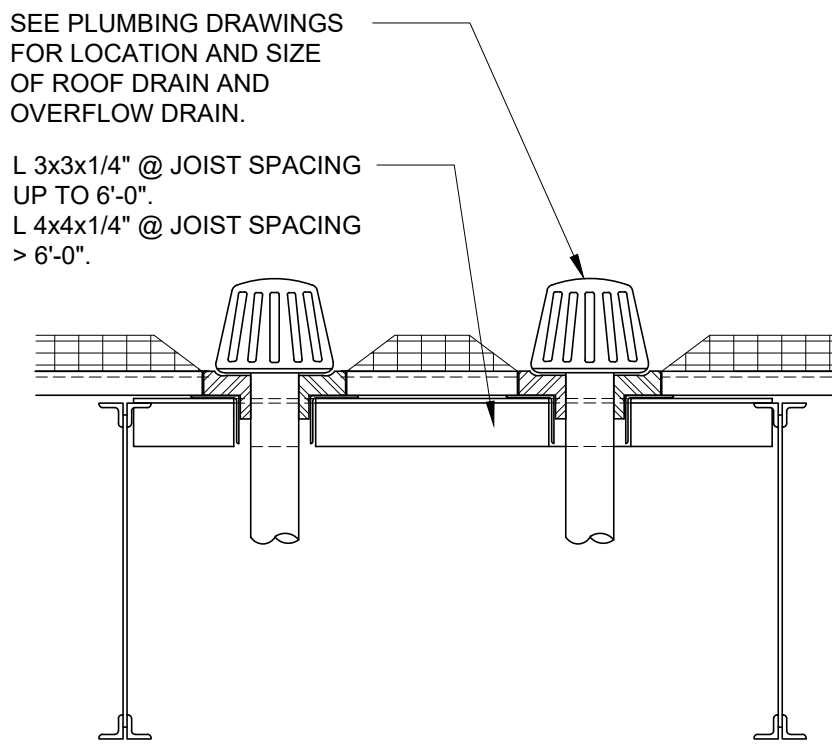
TYPE #	FASTENERS "A" 5/8"Ø PUDDLE WELDS	FASTENERS "B" #10 TEK SCREWS
TYPE 1	36/9	4
TYPE 2	36/7	5
TYPE 3	36/7	3
TYPE 4	36/7	2



TYPICAL ROOF DECK ATTACHMENT
SCALE: NONE

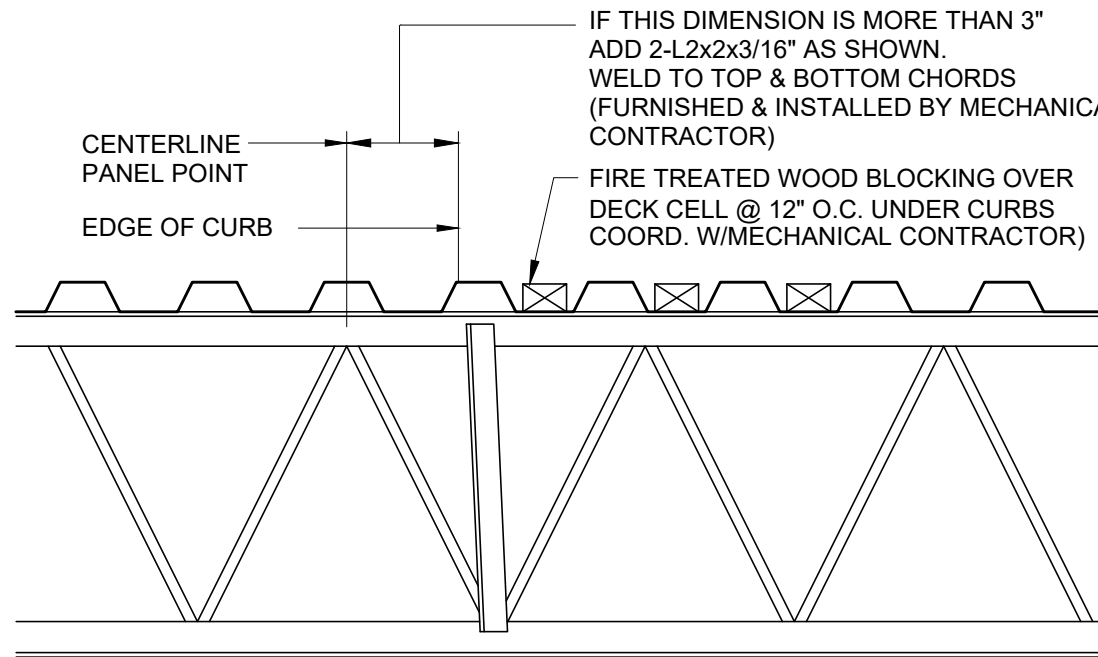
NOTES:
1) ROOF DECK PER PLAN MIN. THREE SPAN CONDITION.
2) FASTEN THROUGH MULTIPLE SHEETS AT ALL END AND SIDE LAPS.
3) END LAPS SHALL OCCUR ONLY AT SUPPORT POINTS.

DETAIL BOOK REF. S2.19 1/27/2023



**TYPICAL ROOF
DRAIN SUPPORT**
SCALE: NONE

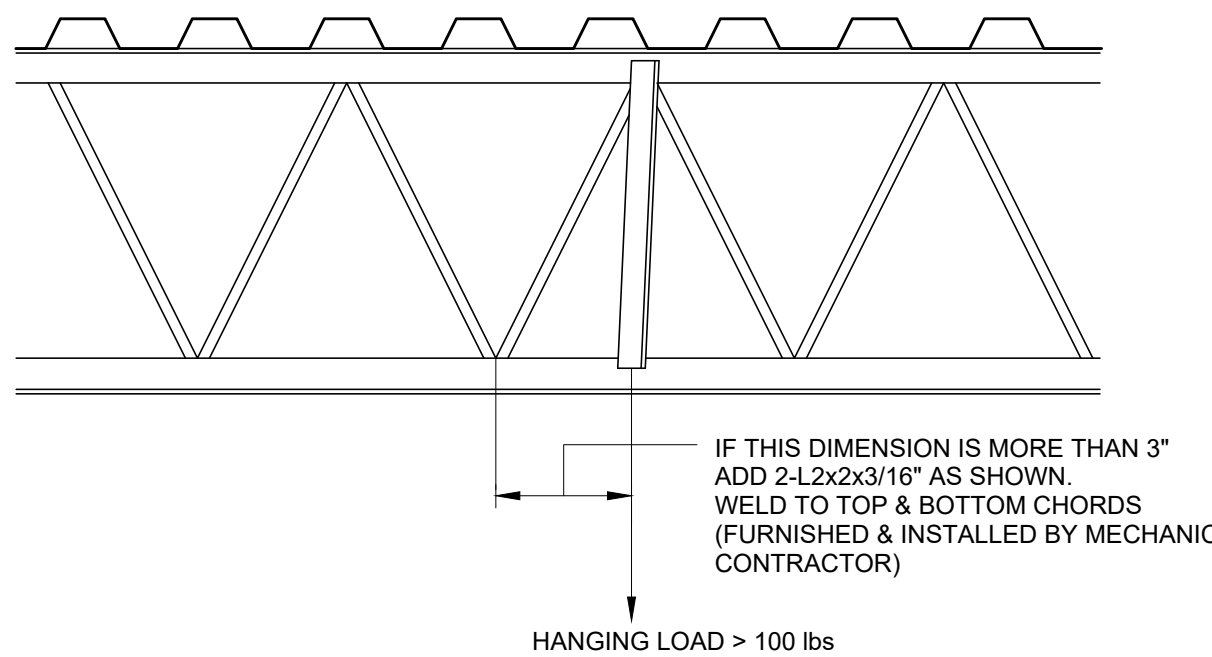
DETAIL BOOK REF. S2.27 1/27/2023



**JOIST REINFORCEMENT AT
ROOF TOP UNIT CURBS**
SCALE: NONE

NOTE: DO NOT ADD EQUIPMENT TO JOISTS SUPPORTING SPRINKLER MAINS W/OUT E.O.R. APPROVAL.

DETAIL BOOK REF. S2.23-N 1/27/2023



**JOIST REINFORCEMENT AT
HANGING LOADS**
SCALE: NONE

NOTE: DO NOT ADD EQUIPMENT TO JOISTS SUPPORTING SPRINKLER MAINS W/OUT E.O.R. APPROVAL.

DETAIL BOOK REF. S2.24 1/27/2023

DESIGNER / BUILDER

ARCO
DESIGN/BUILD

44 SOUTH BROADWAY, SUITE 1003
WHITE PLAINS, NY 10601
P: 914.821.5535 F: 914.306.6010

ADB
STRUCTURAL
ENGINEERING

PROJECT TITLE

**ROCKLAND
LOGISTICS
CENTER BLDG 1**

25 OLD MILL RD.
SUFFERN, NY 10901

OWNER

BROOKFIELD PROPERTIES
1 MEADOWLANDS PLAZA, SUITE 802
EAST RUTHERFORD, NJ 07073

ARCHITECT

ADD / DESIGN SERVICES LLC
44 SOUTH BROADWAY, SUITE 1003
WHITE PLAINS, NY 10601

CIVIL ENGINEER

DYNAMIC ENGINEERING CONSULTANTS
1904 MAIN STREET
LAKE COMO, NJ 07719

STRUCTURAL ENGINEER

NATIONAL DESIGN BUILD SERVICES
325 S. ALABAMA ST., SUITE 200
INDIANAPOLIS, IN 46204

MECHANICAL ENGINEER

NATIONAL DESIGN BUILD SERVICES
11840 BORMAN DRIVE
MARYLAND HEIGHTS, MO 63146

ELECTRICAL ENGINEER

FXB ENGINEERING
5 CHRISTY DRIVE, SUITE 307
CHADDS FORD, PA 19317

PLUMBING ENGINEER

MCCARTHY ENGINEERING
2500 E HIGH STREET, SUITE 630
POTTSTOWN, PA 19464

FIRE PROTECTION ENGINEER

S.A. COMUNALE
2500 NEWPARK DRIVE
BARBERTON, OH 44203

SEAL

KEY PLAN

