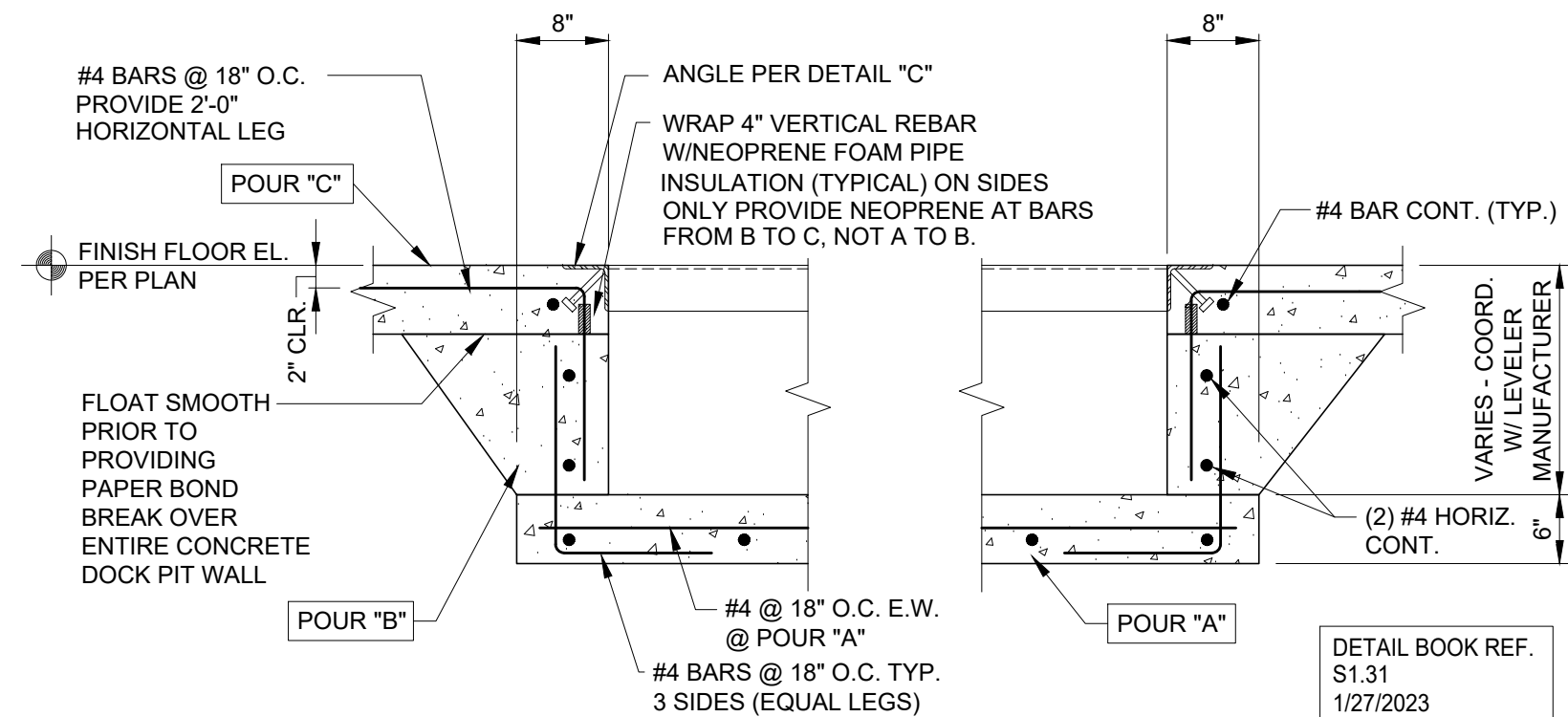


1 DOCK LEVELER PIT PLAN DETAIL

SCALE: NO SCALE
NOTES:
1. BARS PARALLEL TO WALL PANELS IN POUR 'C' ARE NOT REQUIRED IF PANELS ARE CONNECTED TO FOUNDATIONS WITH A CONNECTION MEETING THE REQUIREMENTS OF ACI 318.

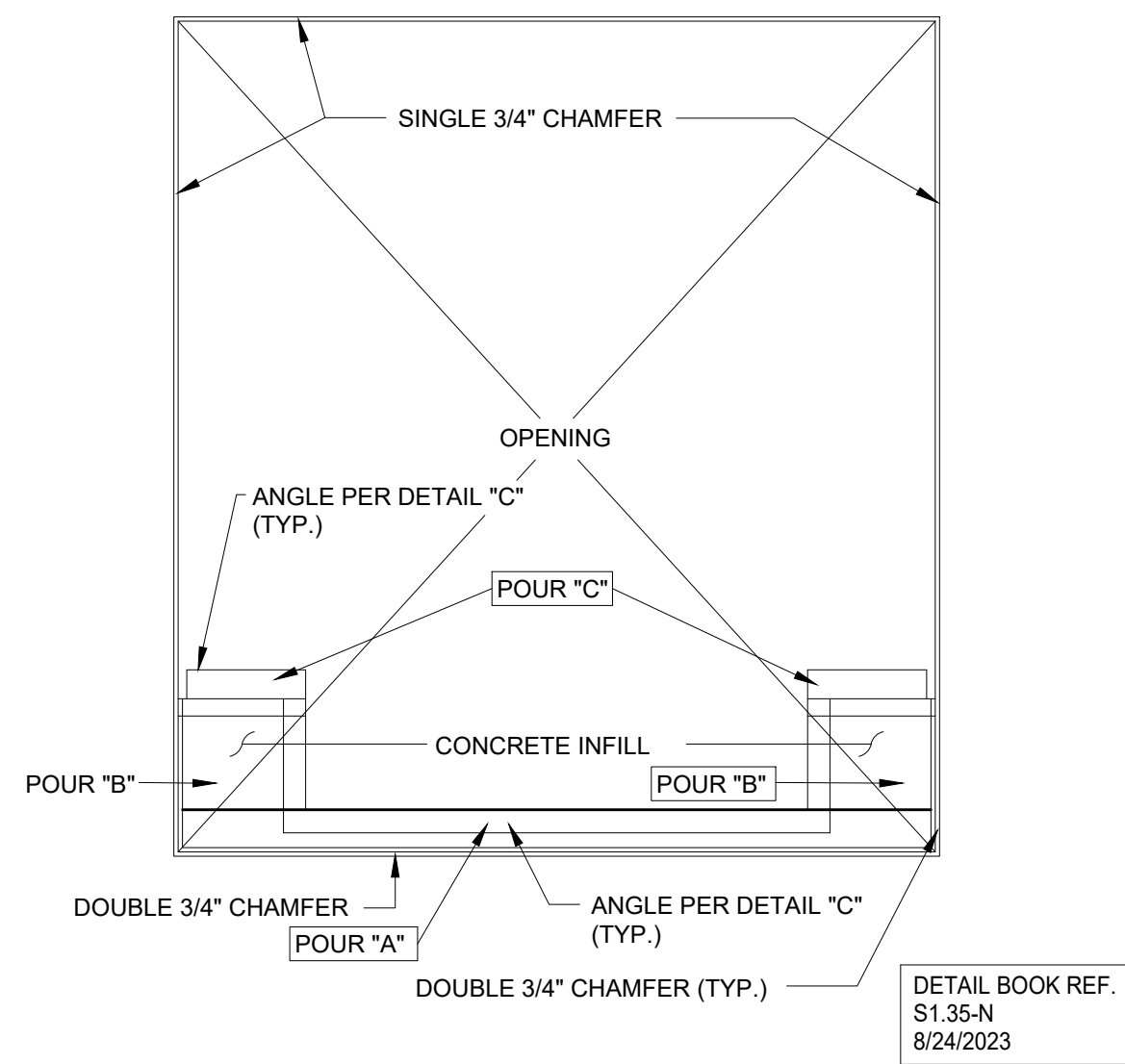
DETAIL BOOK REF.
S1.32
8/24/2023



A DOCK LEVELER PIT

SCALE: NO SCALE

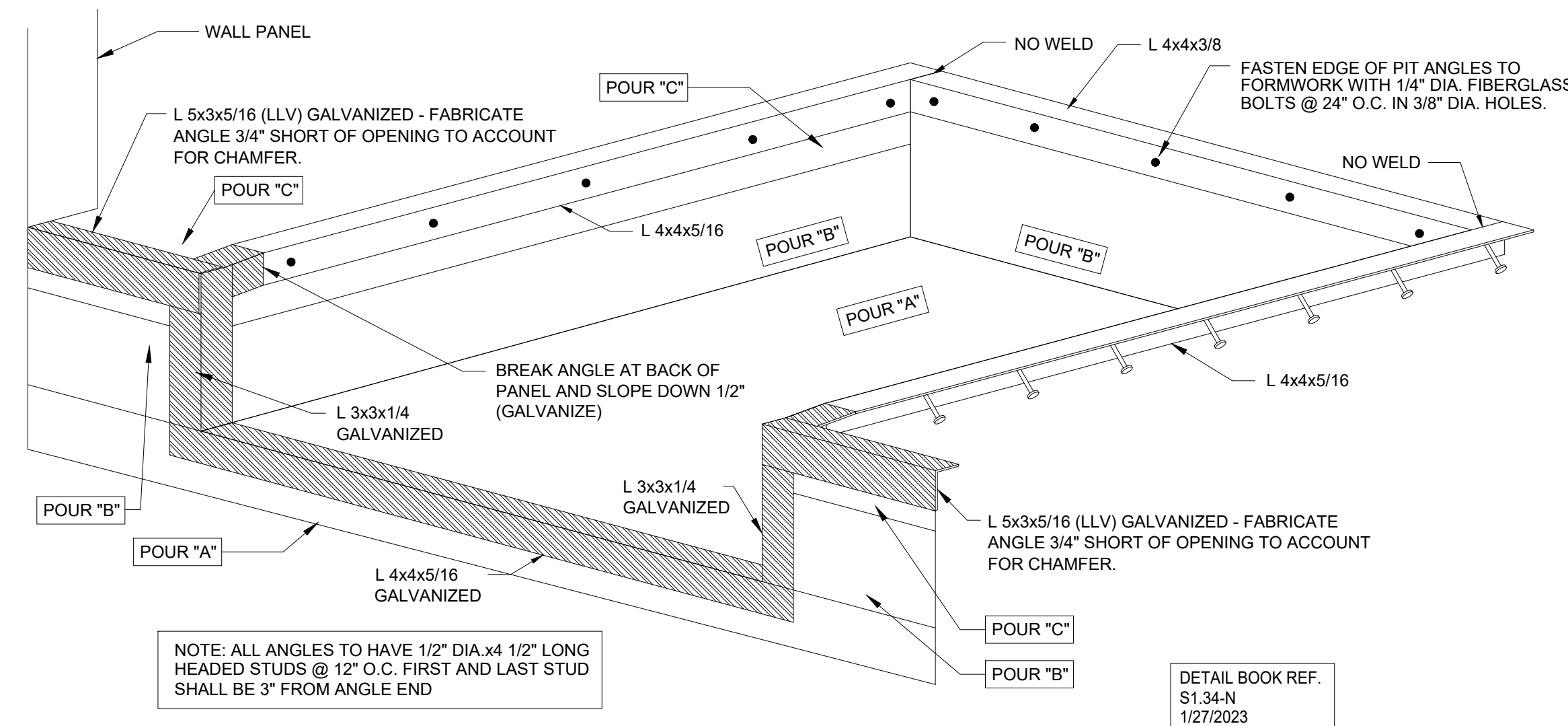
DETAIL BOOK REF.
S1.31
1/27/2023



B DOCK PIT ELEVATION

SCALE: NO SCALE

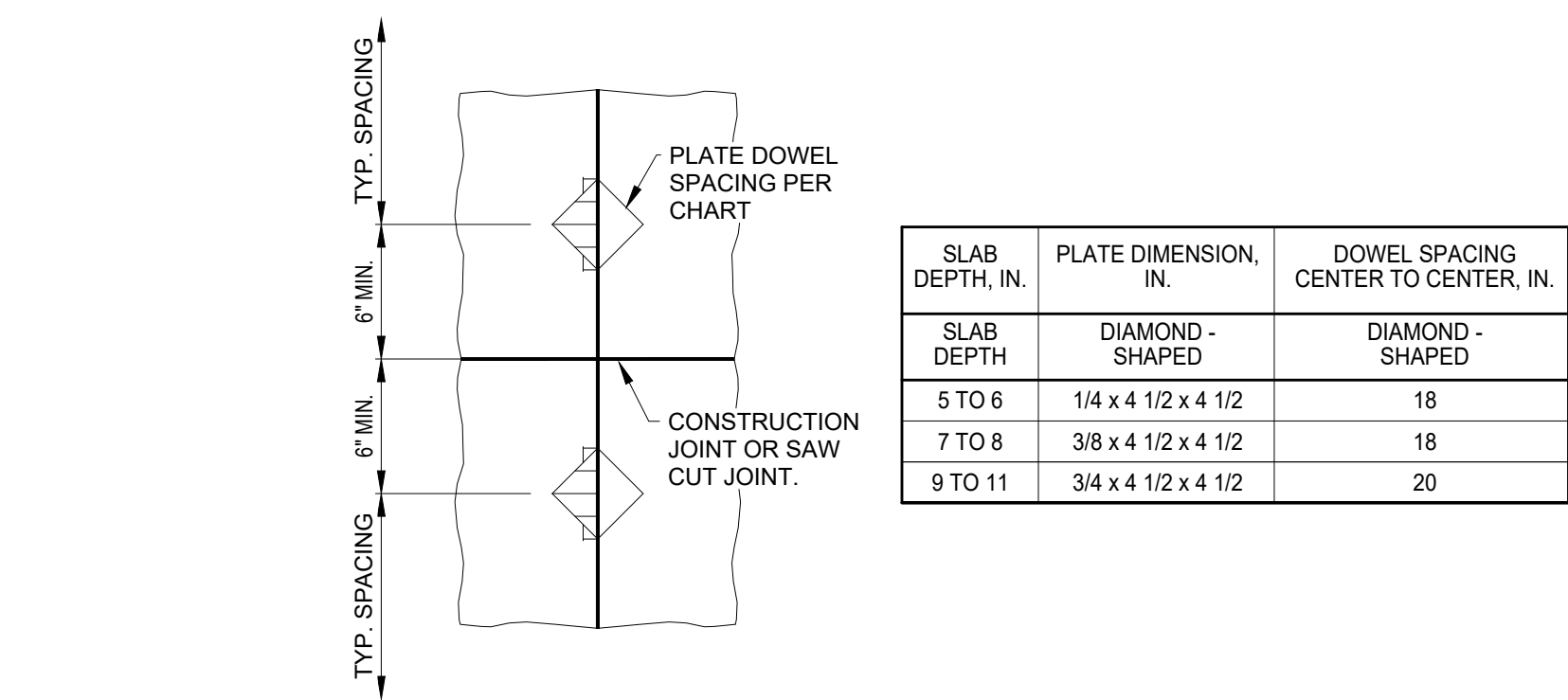
DETAIL BOOK REF.
S1.35-N
8/24/2023



C ISOMETRIC AT DOCK LEVELER

SCALE: NO SCALE

DETAIL BOOK REF.
S1.34-N
1/27/2023



SLAB ON GRADE JOINTS

SCALE: NO SCALE

DETAIL BOOK REF.
S1.01-N
8/24/2023

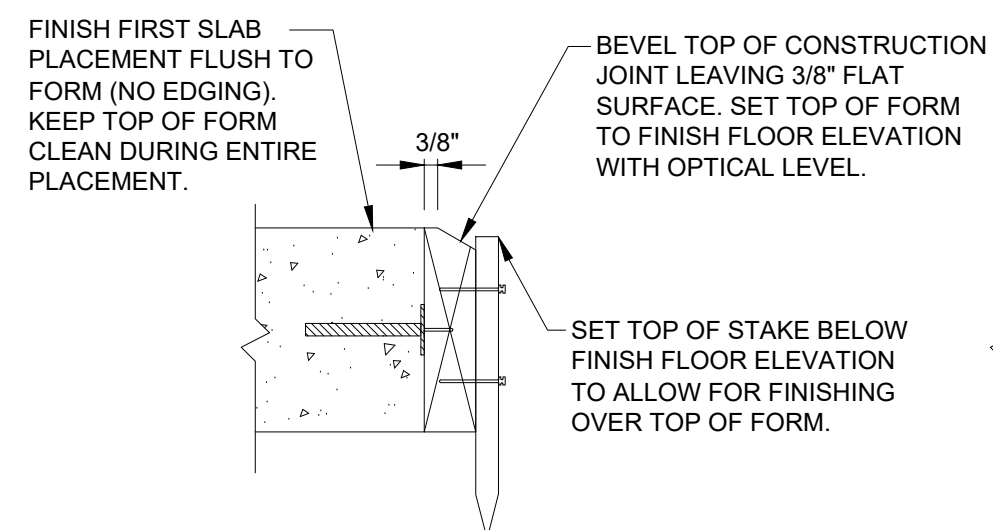
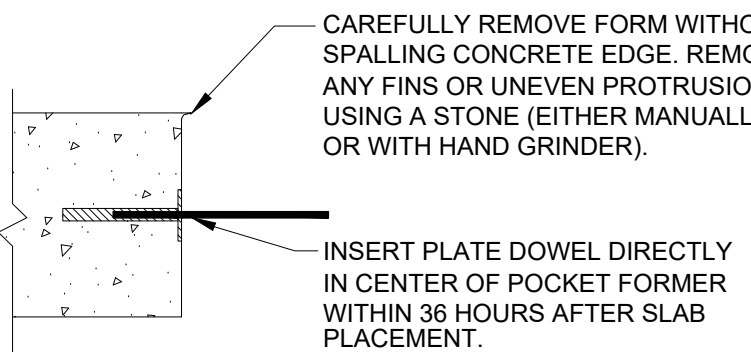
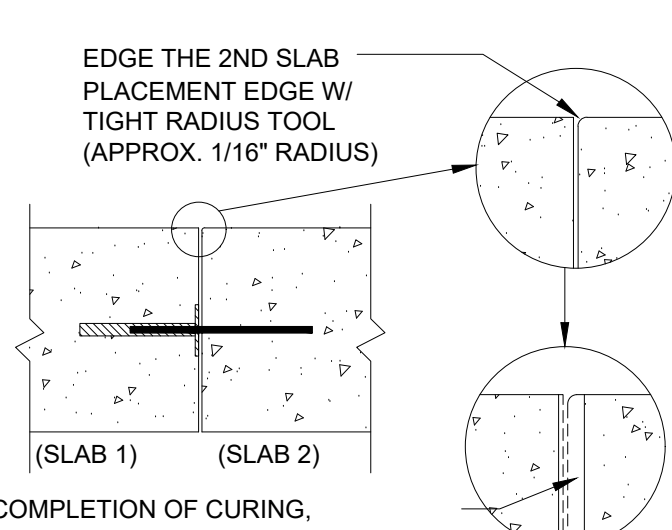


PLATE DOWEL CONSTRUCTION JOINT INSTALLATION

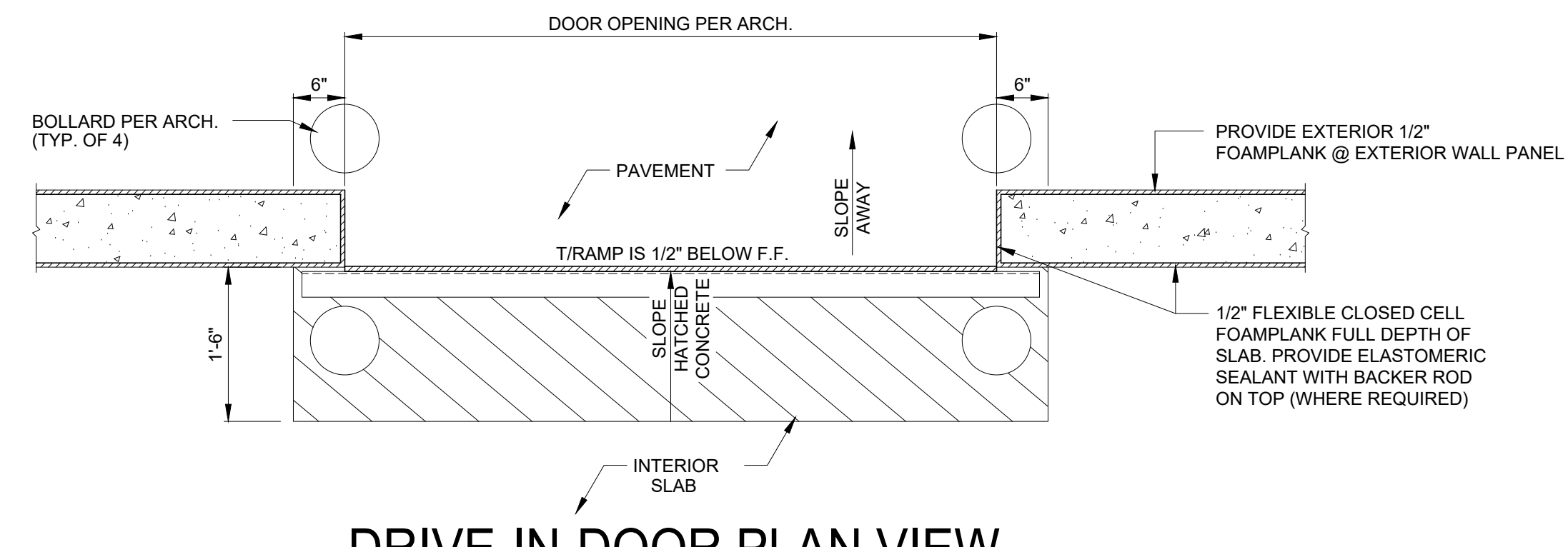
SCALE: NONE



CAREFULLY REMOVE FORM WITHOUT SPALLING CONCRETE EDGE. REMOVE ANY FINS OR UNEVEN PROTRUSIONS USING A STONE (EITHER MANUALLY OR WITH HAND GRINDER).



DETAIL BOOK REF.
S1.01-N
8/24/2023



DRIVE-IN-DOOR PLAN VIEW

SCALE: NONE

DESIGNER / BUILDER

ARCO
DESIGN/BUILD

44 SOUTH BROADWAY, SUITE 1003
WHITE PLAINS, NY 10601
P: 914.821.5535 F: 914.306.6010

ADB
STRUCTURAL
ENGINEERING

PROJECT TITLE

**ROCKLAND
LOGISTICS
CENTER BLDG 3**

25 OLD MILL RD.
SUFFERN, NY 10901

OWNER

BROOKFIELD PROPERTIES
1 MEADOWLANDS PLAZA, SUITE 802
EAST RUTHERFORD, NJ 07073

ARCHITECT

ADD / DESIGN SERVICES LLC
44 SOUTH BROADWAY, SUITE 1003
WHITE PLAINS, NY 10601

CIVIL ENGINEER

DYNAMIC ENGINEERING CONSULTANTS
1904 MAIN STREET
LAKE COMO, NJ 07719

STRUCTURAL ENGINEER

ADB STRUCTURAL ENGINEERING
325 S. ALABAMA ST., SUITE 200
INDIANAPOLIS, IN 46204

MECHANICAL ENGINEER

NATIONAL DESIGN BUILD SERVICES
11840 BORMAN DRIVE
MARYLAND HEIGHTS, MO 63146

ELECTRICAL ENGINEER

FXB ENGINEERING
5 CHRISTY DRIVE, SUITE 307
CHADDS FORD, PA 19317

PLUMBING ENGINEER

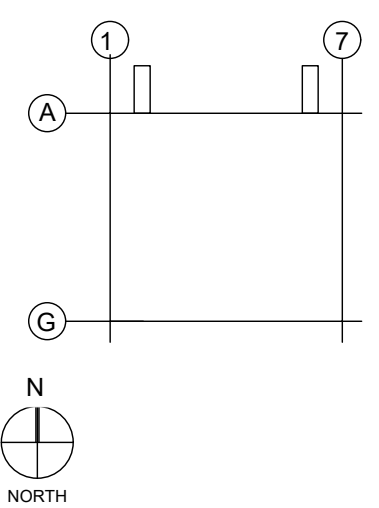
MCCARTHY ENGINEERING
2500 E HIGH STREET, SUITE 630
POTTSTOWN, PA 19464

FIRE PROTECTION ENGINEER

S.A. COMUNALE
2900 NEWPARK DRIVE
BARBERTON, OH 44203

SEAL

KEY PLAN



SUBMITTALS

NO.	DATE	DESCRIPTION
12-04-23	COORDINATION SET	
12-08-23	75% PROGRESS SET	
01-26-24	90% PROGRESS SET	
02-09-24	PERMIT SET	

PROJECT NO.

AS397-22 | NY154 | SEI-085-23

DRAWN BY

JWC

SHEET TITLE

**FOUNDATION
DETAILS**

SHEET NO.

S2.2