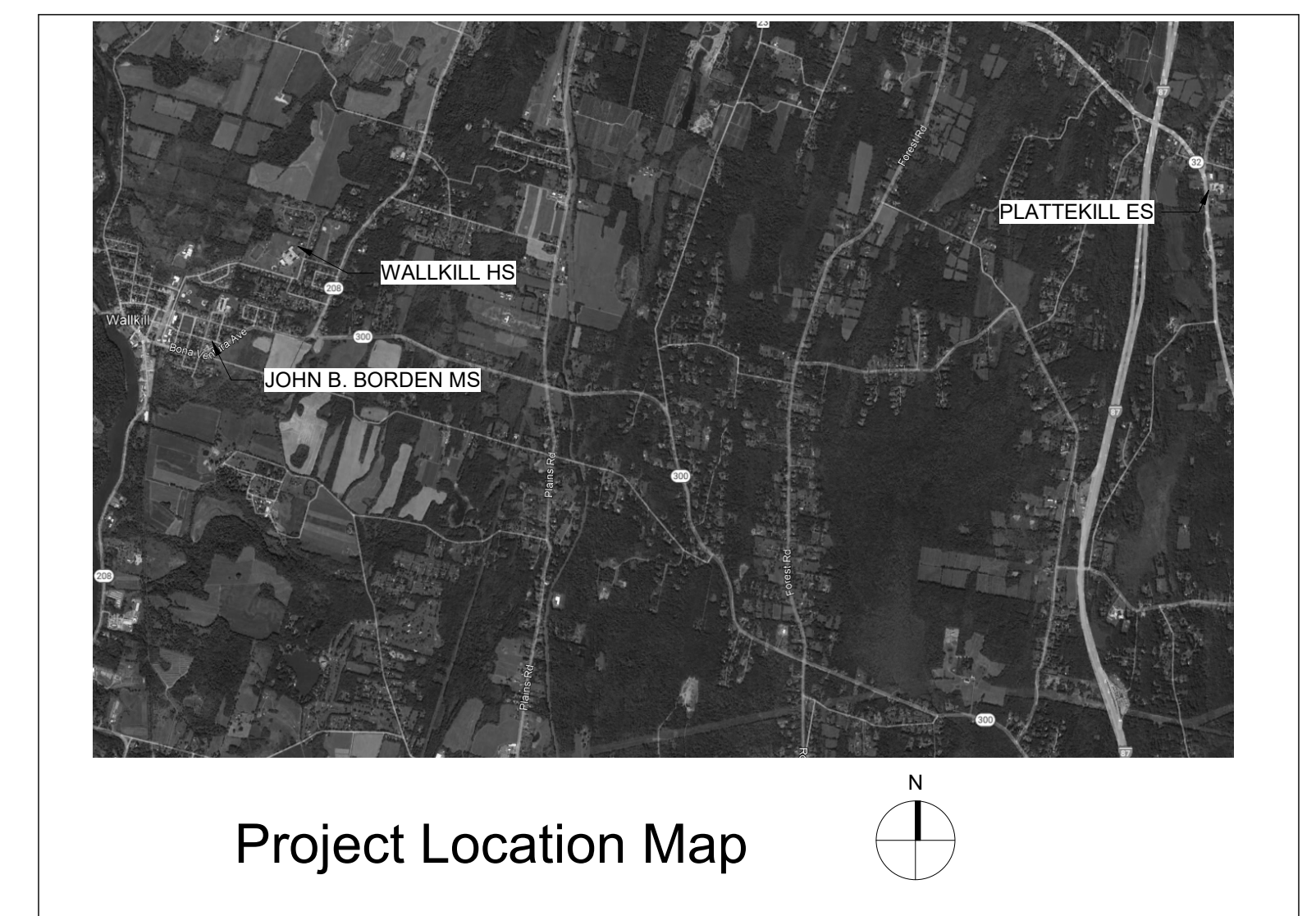


Reconstruction to:
Wallkill Senior High School
John G. Borden Middle School
Plattekill Elementary School

62-18-01-06-0-007-019
62-18-01-06-0-002-015
62-18-01-06-0-005-017



Wallkill Central School District
Wallkill, New York

Drawing List

GENERAL

G001Title Sheet

G100Symbols and Abbreviations

Wallkill Senior High School

CODE COMPLIANCE

AG350Code Compliance Review

AG351Basement and First Floor - Code Compliance Plans

AG352Second Floor - Code Compliance Plans

HAZARDOUS MATERIALS

AHAZ052Roof Abatement Plan

AHAZ101First Floor Abatement Plan - Areas "B" and "C"

ARCHITECTURAL

AA050Basement and First Floor Key Plans

AA051Second Floor Key Plan

AA052Roof Plan

AA101First Floor Demolition Plan - Partial Areas B and C

AA102First Floor Demolition Plan - Area C

AA103First Floor Demolition Plan - Partial Areas D and E and Partial Basement Demolition Plan

AA105Second Floor Demolition Plan - Partial Areas C, D and E

AA131First Floor Plan - Partial Areas B and C

AA132Partial First Floor Plan - Area C and Interior Elevations

AA161First Floor Reflected Ceiling Plan - Area C

AA162First Floor Reflected Ceiling Plan - Partial Areas B and C

AA163First Floor Reflected Ceiling Plan - Partial Areas D and E and Basement Partial Area B

AA168Second Floor Reflected Ceiling Plan - Partial Areas C, D and E

AA400Enlarged Plans and Details

AA401Enlarged Locker Room Plans

AA402Gymnasium Striping Plan

AA403Court Striping Layouts

AA600Door Schedule and Misc. Details

AA900Enlarged Plans

AA901Details and Signage

STRUCTURAL

AS130Partial Roof Framing Plan - Areas B, DNotes and Schedules

AS600Typical Details

MECHANICAL

AM050Basement and First Floor Key Plans

AM051Second Floor Key Plan

AM052Roof Key Plan

Wallkill Senior High School

ELECTRICAL

AE050Basement and First Floor Key Plan

AE051Second Floor Key Plan

AE052Roof Key Plan

AE100Partial Basement & First Floor Demolition Plan - Area B & C

AE101First Floor Demolition Plan - Area C

AE102First Floor Demolition Plan - Area D

AE103First Floor Demolition Plan - Area E

AE104Second Floor Demolition Plan - Area C

AE105Second Floor Demolition Plan - Area D

AE106Second Floor Demolition Plan - Area E

AE107Roof Demolition Plan

AE130Partial Basement Area B & Partial First Floor Lighting Plan - Area C

AE131First Floor Lighting Plan - Partial Area B and C

AE132First Floor Lighting Plan - Area D

AE133First Floor Lighting Plan - Area E

AE134Second Floor Lighting Plan - Area C

AE135Second Floor Lighting Plan - Area D

AE136Second Floor Lighting Plan - Area E

AE137Work By Alternate

AE160Partial Basement and First Floor Power Plans - Areas B and C

AE161First Floor Power Plan - Area D

AE162First Floor Power Plan - Area E

AE163Second Floor Power Plan - Area C

AE164Second Floor Power Plan - Area D

AE165Roof Power Plan - Area B

AE166Second Floor Power Plan - Area E

AE167Roof Power Plans - Area C and D

AE500Details

AE501Details

AE600Schedules

PLUMBING

AP050Basement and First Floor Key Plans

Wallkill Senior High School

CODE COMPLIANCE

BG350Code Compliance Review and Vintage Plans

BG351First Floor - Code Compliance Plans

BG352Second and Third Floors - Code Compliance Plans

HAZARDOUS MATERIALS

BHAZ052Roof Abatement Plan

BHAZ100First Floor Abatement Plan-Area "A"

BHAZ101First Floor Abatement Plan- Area "B"

ARCHITECTURAL

BA050Basement and First Floor Key Plans

BA051Second and Third Floor Key Plans

BA052Roof Plan

BA100First Floor Demolition Plan - Area A

BA101First Floor Demolition Plan - Area B

BA102Second Floor Demolition Plan - Areas A and B

BA160First Floor Reflected Ceiling Plan & Partial Locker Room Reflected Ceiling Plan

BA162Second Floor Reflected Ceiling Plan

BA200Exterior Elevations

BA400Enlarged Plans and Details

BA600Door Schedule and Misc. Details

BA900Enlarged Plan

BA901Gym and Auditorium Ceiling Plans

STRUCTURAL

BS130Partial Roof Framing Plan - Areas A, BNotes, Schedules, and Details

MECHANICAL

BM051Basement, First and Second Floor Key Plans

BM052Third Floor and Roof Key Plans

BM100Partial First Floor Demolition Plans

BM101Roof Demolition Plan

BM130Partial First Floor Plan

BM131Partial Roof Plan

BM500Details

BM600Schedules

BM700Controls

John G. Borden Middle School

ELECTRICAL

BE050Basement and First Floor Key Plans

BE051Second and Third Floor Key Plans

BE100First Floor Demolition Plan - Area A

BE101First Floor Demolition Plan - Area B

BE102Second Floor Demolition Plan - Area A

BE130First Floor Lighting Plan - Area A

BE131First Floor Lighting Plan - Area B

BE132Second Floor Lighting Plan - Area A

BE160Partial First & Second Floor Power Plans - Areas A & B

BE161Partial First Floor Power Plan - Area A

BE162Roof Plan

BE500Details

BE501Details

BE600Schedules

PLUMBING

BP050First Floor Key Plan

BP400Locker Rooms Demolition Plan

BP401Locker Rooms Plan

BP500Details and Schedule

Plattekill Elementary School

CODE COMPLIANCE

DG350Code Compliance Review

DG351First Floor - Scope of Work and Rescue Window Locations

ARCHITECTURAL

DA051Basement and First Floor Key Plans

DA101First Floor Demolition Plan

DA131First Floor Plan

DA200Exterior Elevations

DA600Window Types and Details

Common

ARCHITECTURAL

ZA750Roof Details

Drawn By:
TTAE

Date:
09/30/2023

Drawing Number:

Project No.:
17597-22002

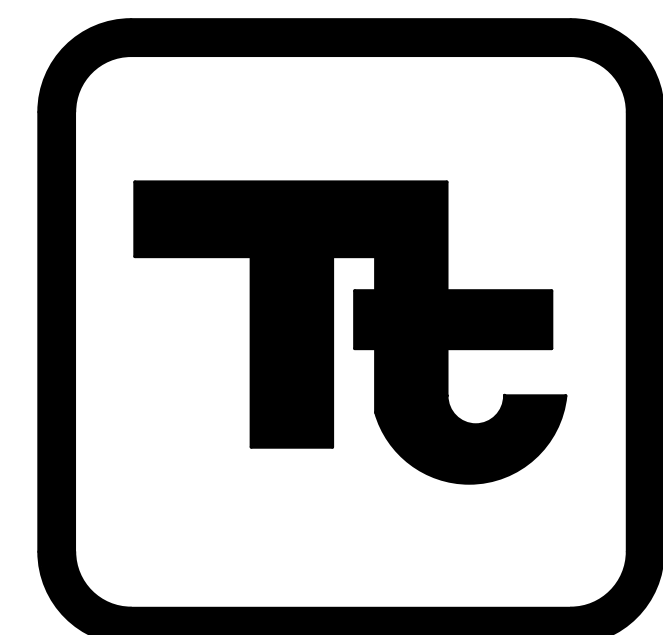
AA130

BUILDING DESIGNATOR

DISCIPLINE DESIGNATOR

SHEET TYPE DESIGNATOR

SHEET SEQUENCE DESIGNATOR



TETRA TECH
ARCHITECTS & ENGINEERS

Architecture Engineering Planning for High Performance Facilities

The engineer that has signed this document certifies that to the best of their knowledge, information and belief, the asbestos plans and specifications are in accordance with applicable requirements of the New York State Uniform Fire Prevention and Building Code, Construction Standards of the Commissioner of Education, New York State Department of Labor Part 56 of Title 12, and the United States Environmental Protection Agency Hazard Emergency Response ACT Regulations. Anthony Meluso is accredited to the EPA and New York State under AHERA Regulations as an Asbestos Project Designer (Asbestos Handling Certificate Number 94-03914)

To the best of the Architect's knowledge, information and belief, the design of this project conforms to all applicable provisions of the New York State Uniform Fire Prevention and Building Code, the New York State Energy Conservation Code, and the building standards of the New York State Education Department.

BID SET

Set No.

Drawing Number:

G001

Tetra Tech Engineers, Architects & Landscape Architects, P.C.

17597-22002
06/30/2023