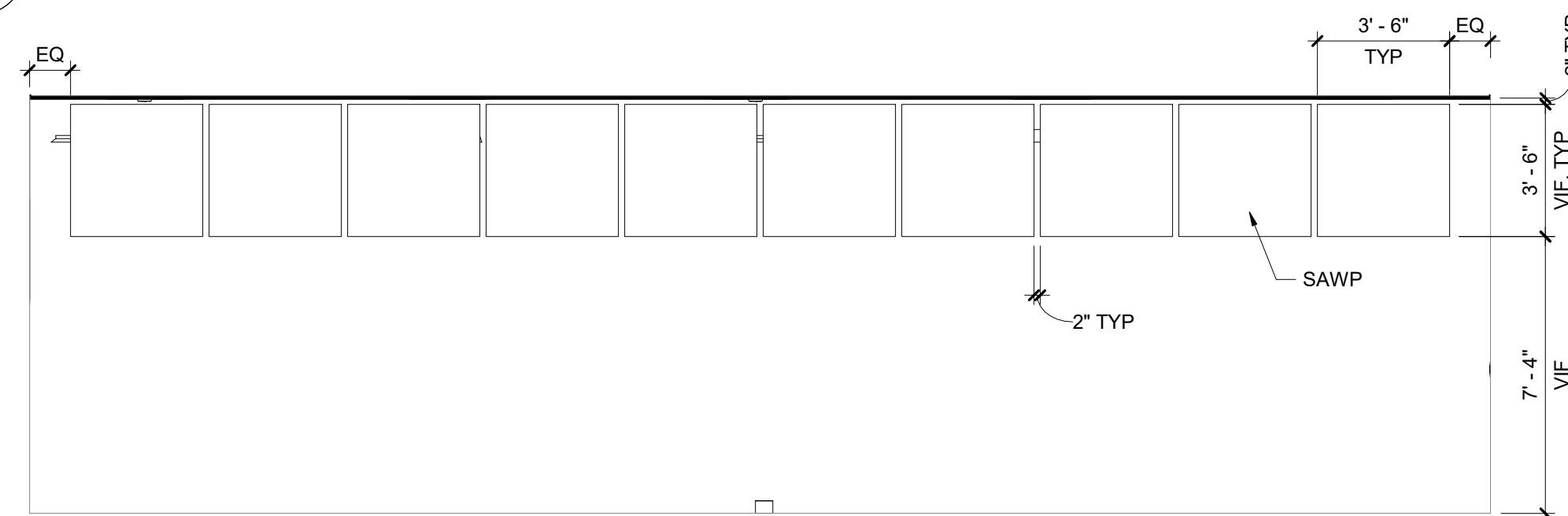
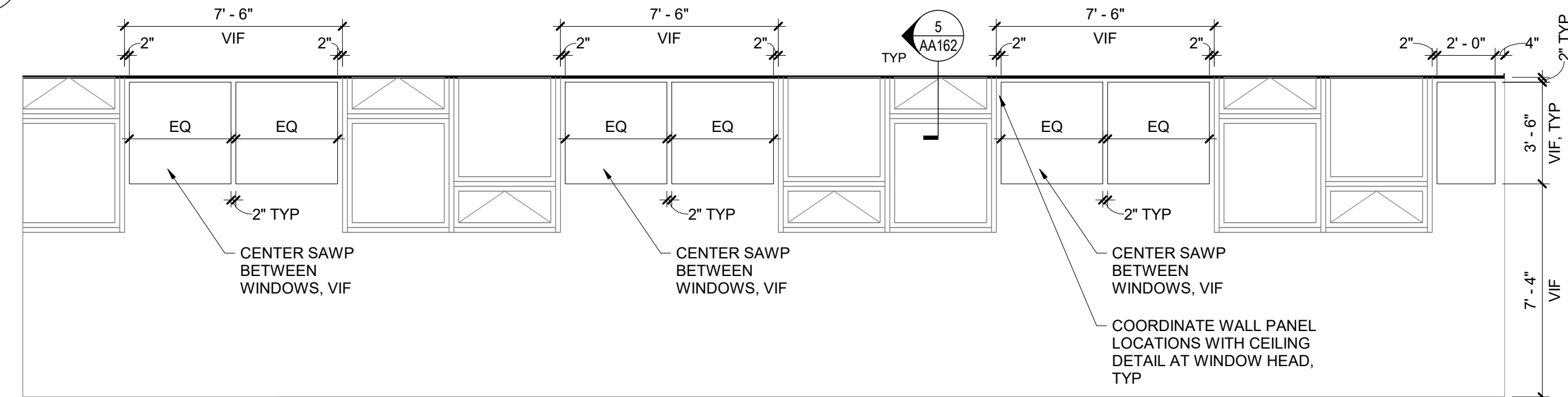


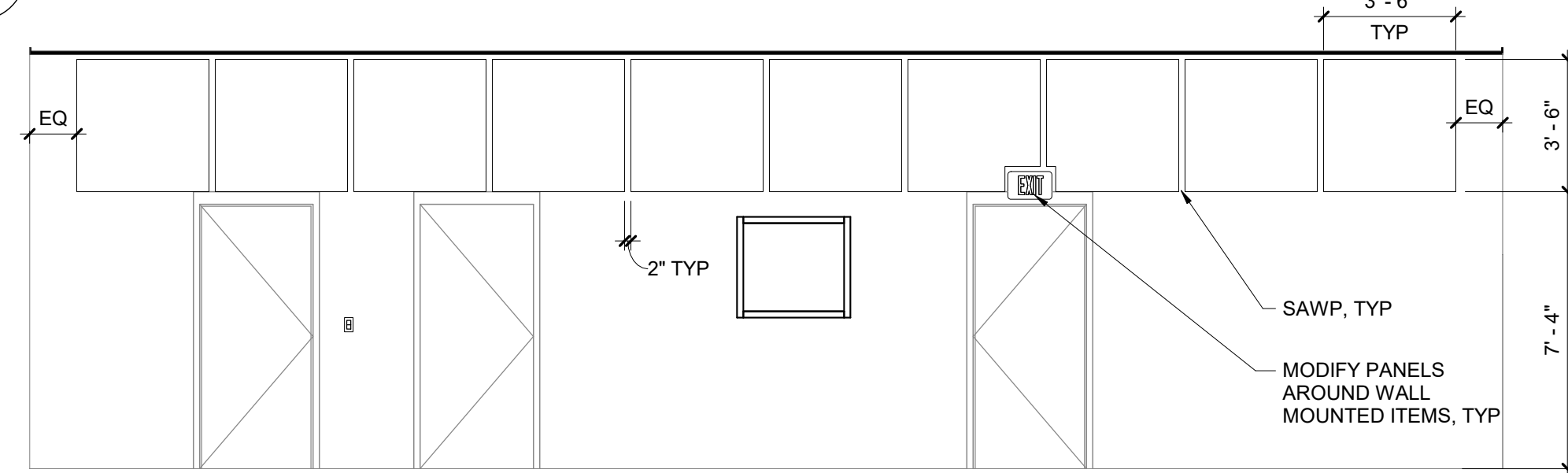
2 Elevation 4 - a  
1/4" = 1'-0"



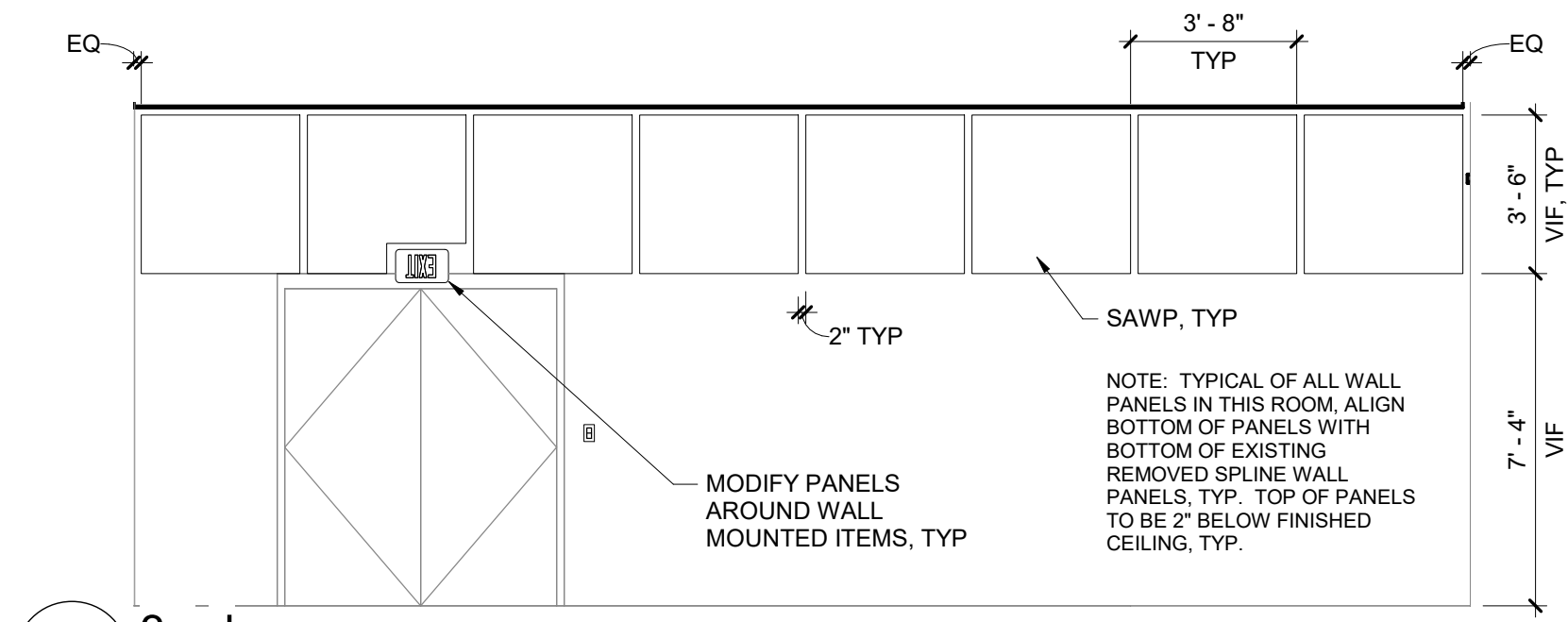
3 Elevation 1 - d  
1/4" = 1'-0"



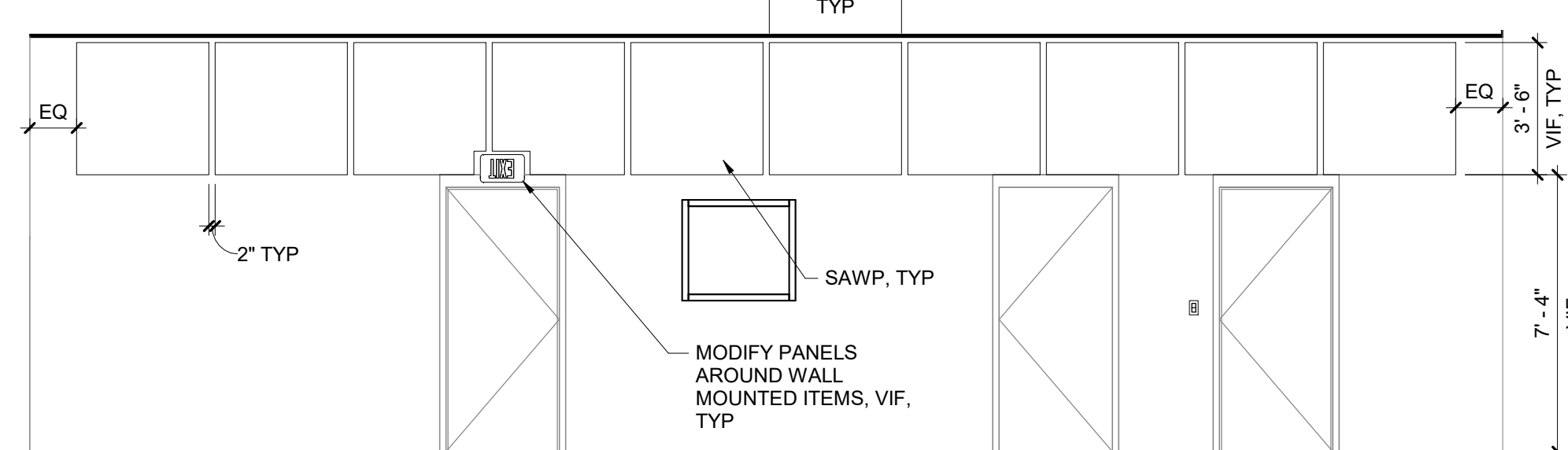
4 Elevation 1 - c  
1/4" = 1'-0"



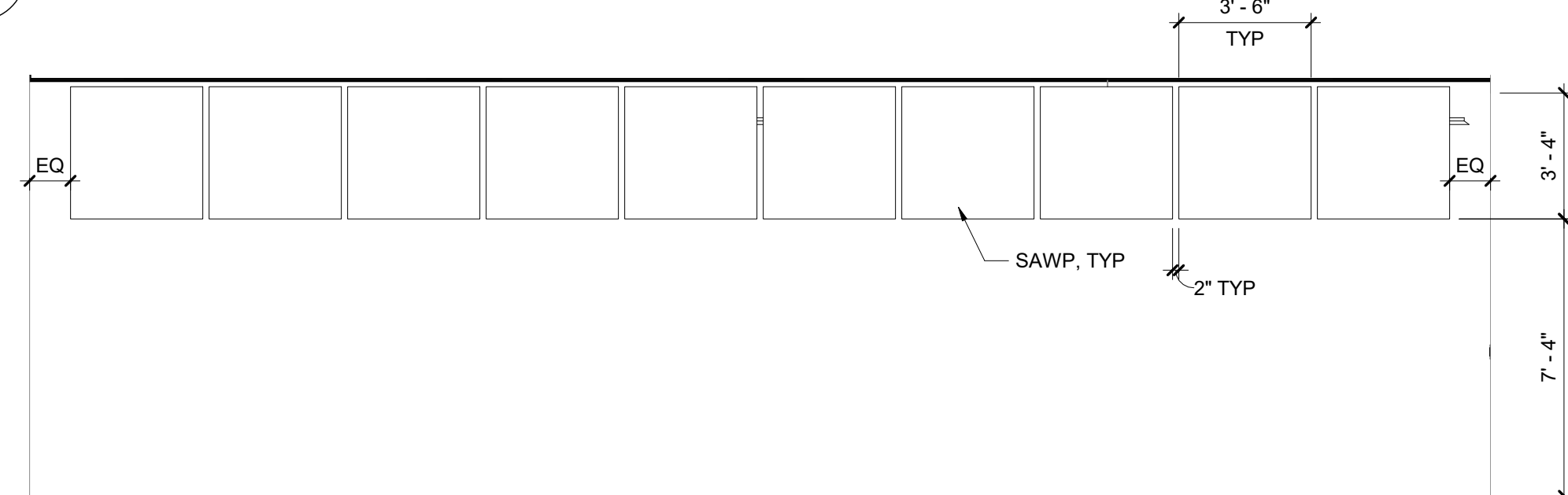
5 Elevation 9 - a  
1/4" = 1'-0"



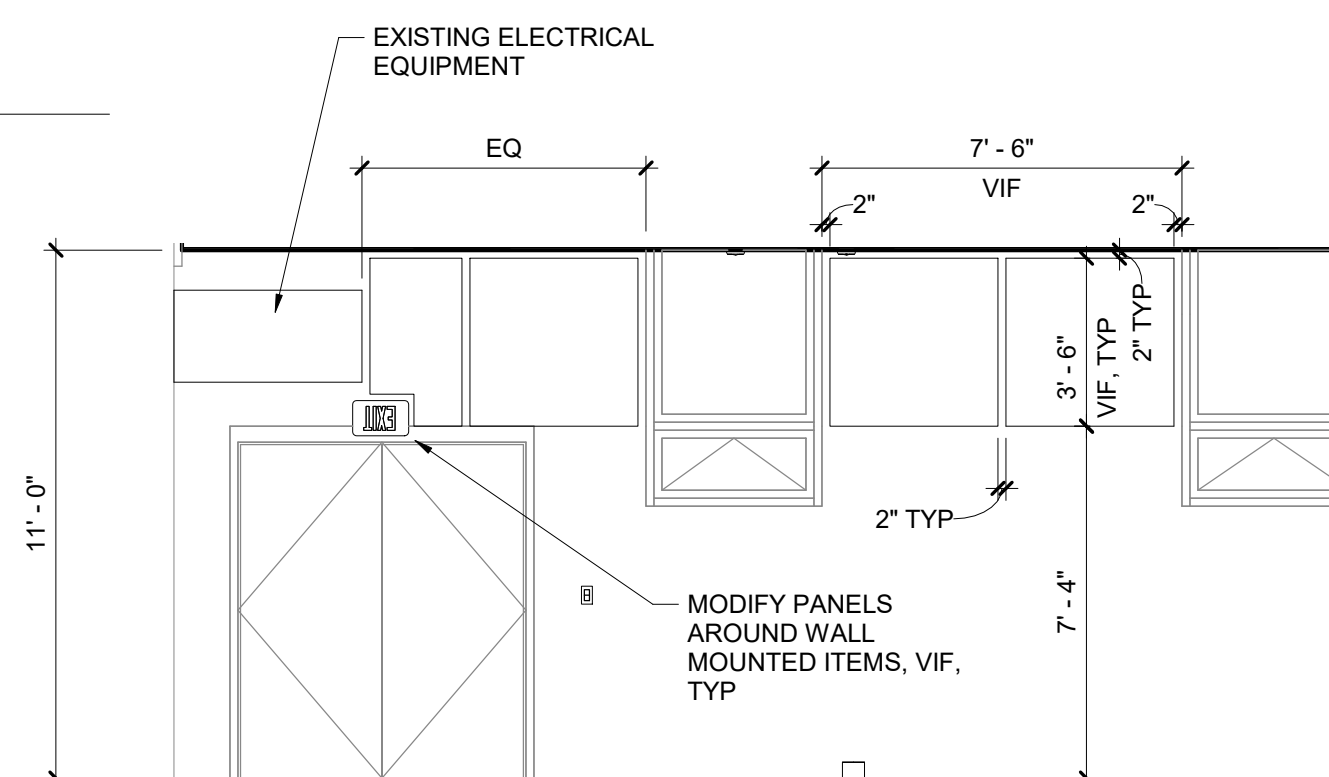
6 3 - d  
1/4" = 1'-0"



7 Elevation 8 - a  
1/4" = 1'-0"



9 3 - a  
1/4" = 1'-0"



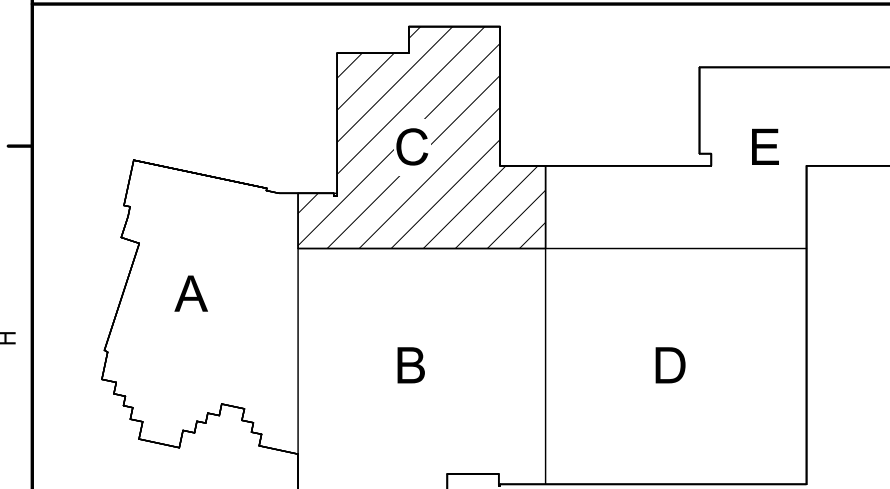
8 3 - b  
1/4" = 1'-0"



1 Partial First Floor Plan - Area C  
1/8" = 1'-0"

### General Notes - Applies to All Drawings

- DO NOT SCALE DRAWINGS TO OBTAIN DIMENSIONS.
- TAKE FIELD MEASUREMENTS TO FIT THE WORK PROPERLY. VERIFY ALL EXISTING CONDITIONS AND DIMENSIONS IN THE FIELD.
- REFER INCONSISTENCIES TO ARCHITECT PRIOR TO COMMENCING THE WORK IN AFFECTED AREA.
- ITEMS ARE SHOWN DIAGRAMMATICALLY ON DRAWINGS. VERIFY SPACE REQUIREMENTS AND DIMENSIONS TO FIT THE WORK PROPERLY.
- NOTES SHOWN ON ONE DRAWING APPLY TO ALL SIMILAR DRAWINGS.
- DO NOT DISTURB CONSTRUCTION SUSPECTED OF CONTAINING HAZARDOUS MATERIAL. IF ENCOUNTERED, IMMEDIATELY NOTIFY ARCHITECT, CONSTRUCTION MANAGER AND OWNER.



Key Plan  
N.T.S.

S.E.D. Control No. 62-18-01-06-0-007-019

Rev. No.: Date: Description:



complex world  
CLEAR SOLUTIONS

Tetra Tech Engineers, Architects  
& Landscape Architects, P.C.



Wallkill Central School District  
Wallkill, New York

Reconstruction to:  
Wallkill Senior High School

Partial First Floor Plan - Area C and  
Interior Elevations

Drawn By: TTAE Date: 06/30/2023 Drawing Number:  
Project No.: 17597-22002 AA132