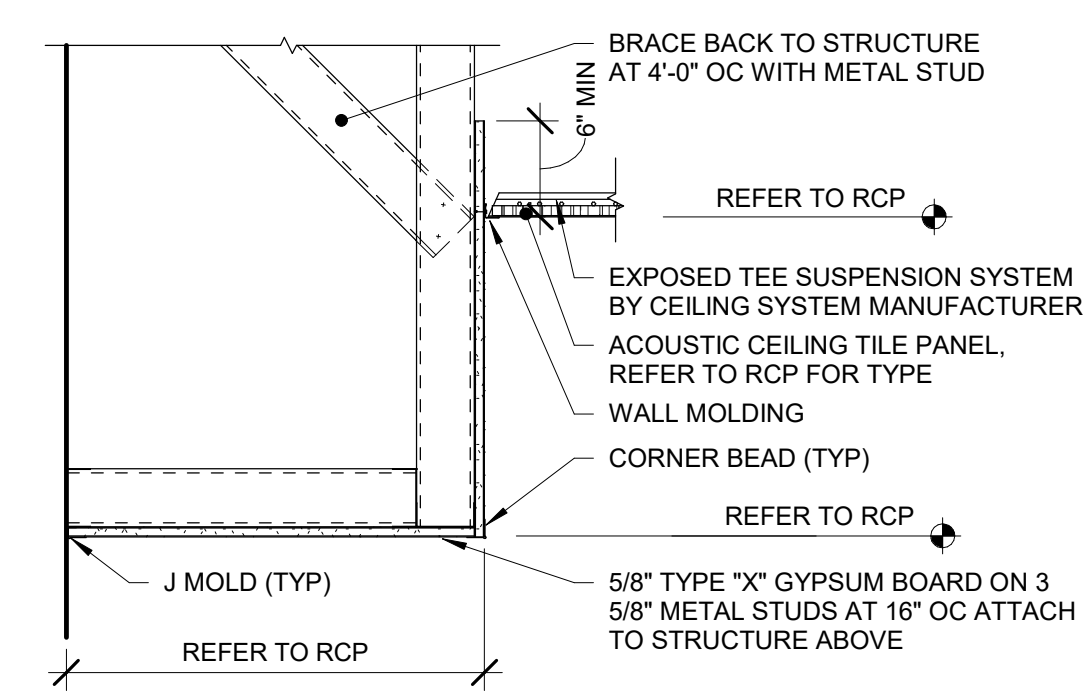
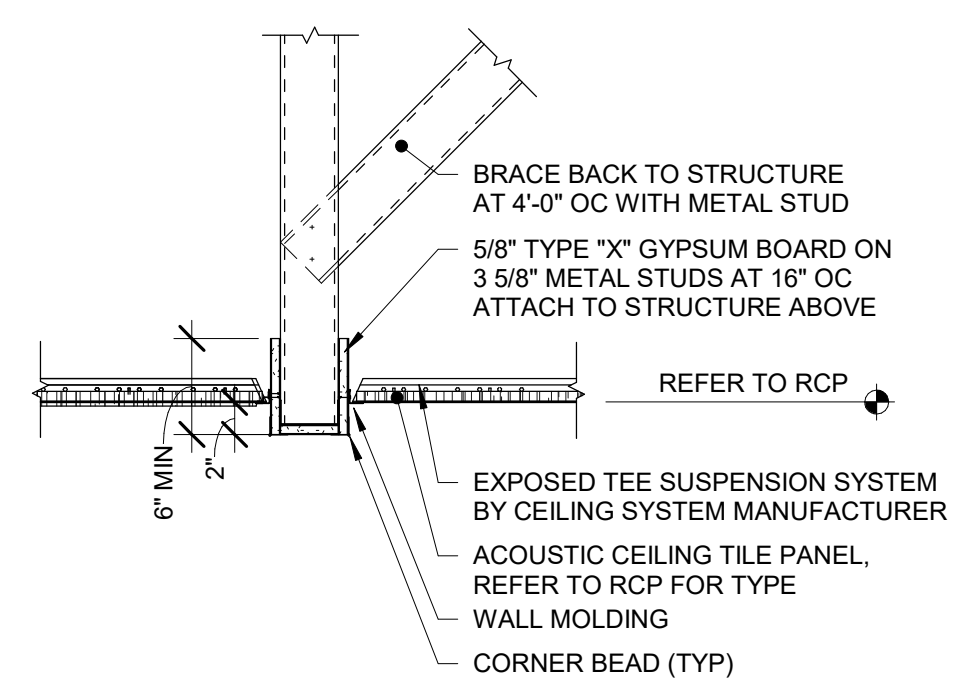


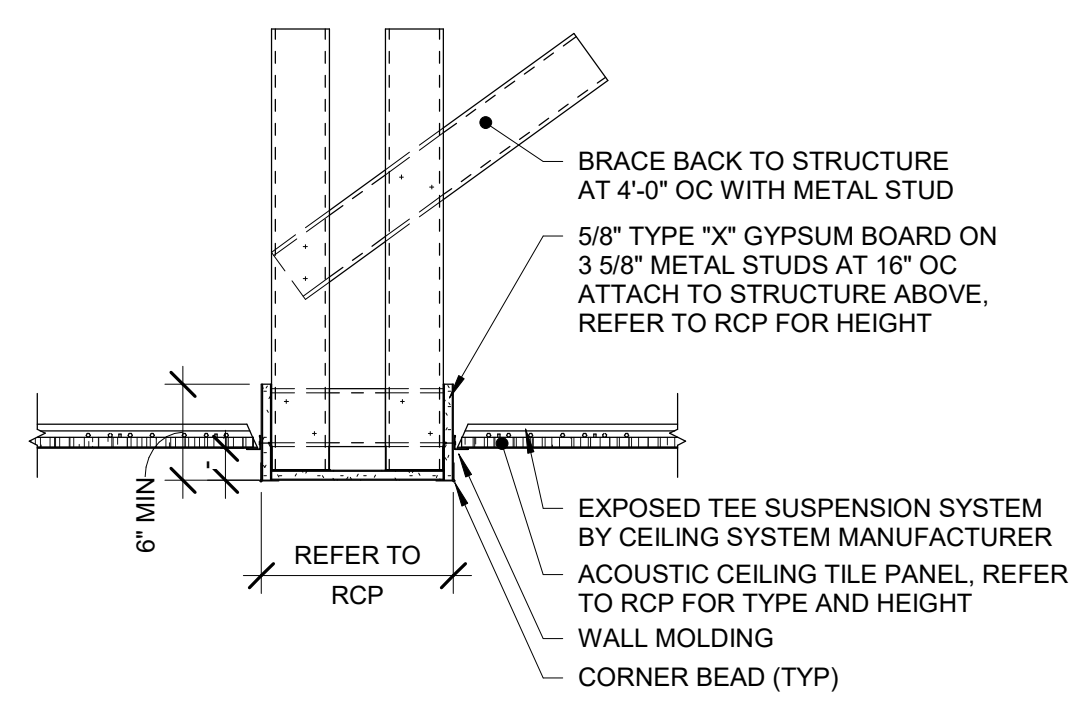
1 First Floor Reflected Ceiling Plan - Partial Areas B and C  
1/8" = 1'-0"



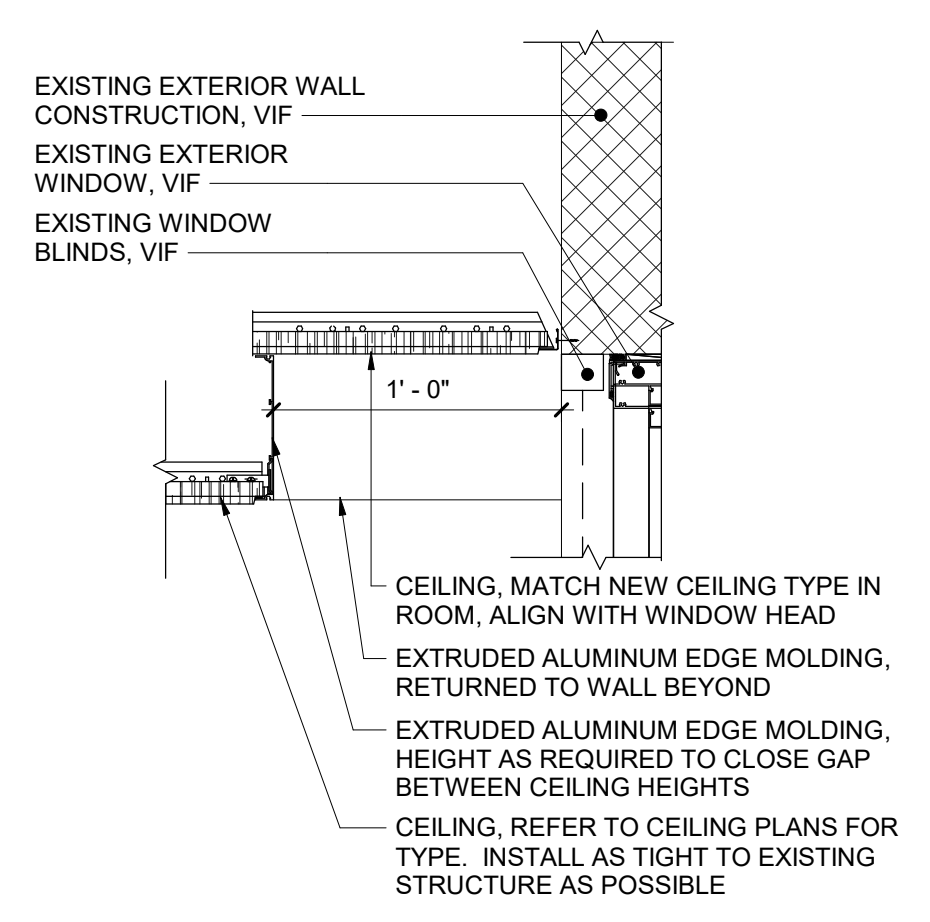
2 Soffit Detail- Gyp to Acoustic  
1" = 1'-0"



3 Soffit Detail  
1" = 1'-0"



4 Soffit Detail  
1" = 1'-0"



5 Ceiling at Window Detail  
1 1/2" = 1'-0"

## General Ceiling Notes

- LIGHTING AND OTHER CEILING-MOUNTED FIXTURES ARE SHOWN FOR DRAWING CLARITY. COORDINATE ALL CEILING WORK PRIOR TO INSTALLATION OF CEILING GRID.
- CEILING HEIGHT IS 9'-0" ABOVE FINISHED FLOOR (UNO).
- CENTER CEILING-MOUNTED ITEMS (LIGHTS, GRILES, DETECTORS, SPRINKLER HEAD, ETC) WITHIN THE CEILING PANELS AND GRIDS UNLESS THE PANELS ARE SCORED. CENTER ITEMS WITHIN THE PATTERN OF SCORED PANELS.
- PROVIDE EXPANSION JOINT (EJ) COVERS IN CEILINGS AND SOFFITS AT EJ LOCATIONS.
- PROVIDE CONTROL JOINTS IN GYPSUM BOARD CEILINGS AND SOFFITS AS DETAILED ON DRAWINGS (MAXIMUM 20'-0" OC, EVENLY SPACED, TYP UNO).
- PATCH CEILING SYSTEMS TO REMAIN THAT HAVE BEEN DISTURBED BY SCHEDULED WORK TO MATCH ADJACENT CONSTRUCTION PRIOR TO PAINTING. COORDINATE CEILING DISTURBANCES WITH ALL OTHER DISCIPLINE'S DRAWINGS.
- X 9'-0" DESIGNATES BOTTOM OF CEILING ABOVE FINISHED FLOOR AT THAT POINT UNO. DESIGNATION 'ME' INDICATES MATCH EXISTING CEILING HEIGHT.
- CEILING PERIMETER TRIM TO WRAP AROUND EXISTING TO REMAIN WALL MOUNTED ITEMS AND WINDOW TRIM AS REQUIRED DUE TO CEILING HEIGHTS BEING LOWERED. NEW CEILINGS ARE NOT TO EXTEND BELOW EXISTING WINDOW HEADS AS THEY WOULD CONFLICT WITH EXISTING WINDOW SHADES.
- AT LOCATIONS OF SPLINE CEILING REPLACEMENT, CEILINGS SHALL BE MOUNTED AS HIGH AS POSSIBLE IN THE ROOMS AND AS TIGHT TO THE EXISTING STRUCTURE ABOVE AS POSSIBLE.

## Ceiling Types

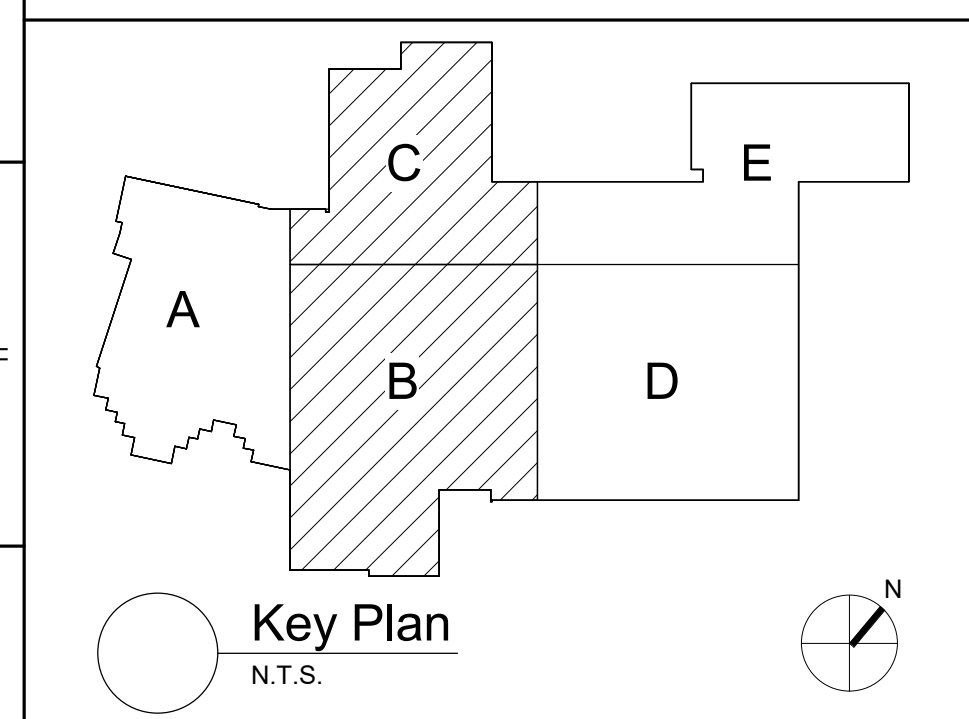
- A1 X-X' ACOUSTIC PANEL CEILING  
A2 X-X' ACOUSTIC PANEL CEILING  
A3 X-X' ACOUSTIC TECTUM PANEL CEILING  
B X-X' PAINTED 5/8" GYPSUM CEILING ON SUPPORT MATERIALS (GRID SUSPENSION SYSTEM, TYP UNO)

## Keyed Ceiling Notes

- 1 REFER TO DETAIL 5 / AA162 FOR CEILING TRANSITION AT EXTERIOR WINDOWS. DETAIL APPLIES TO ALL EXTERIOR WINDOWS IN ROOMS TAGGED.

## Alternate Legend

- ALTERNATE NO. HS-1  
ALTERNATE NO. HS-2  
ALTERNATE NO. HS-3



S.E.D. Control No. 62-18-01-06-0-007-019

Rev. No.:	Date:	Description:



complex world | CLEAR SOLUTIONS  
Tetra Tech Engineers, Architects & Landscape Architects, P.C.



Wallkill Central School District  
Wallkill, New York

Reconstruction to:  
Wallkill Senior High School

First Floor Reflected Ceiling Plan -  
Partial Areas B and C

Drawn By: TS	Date: 06/30/2023	Drawing Number: AA162
Project No.: 17597-22002		