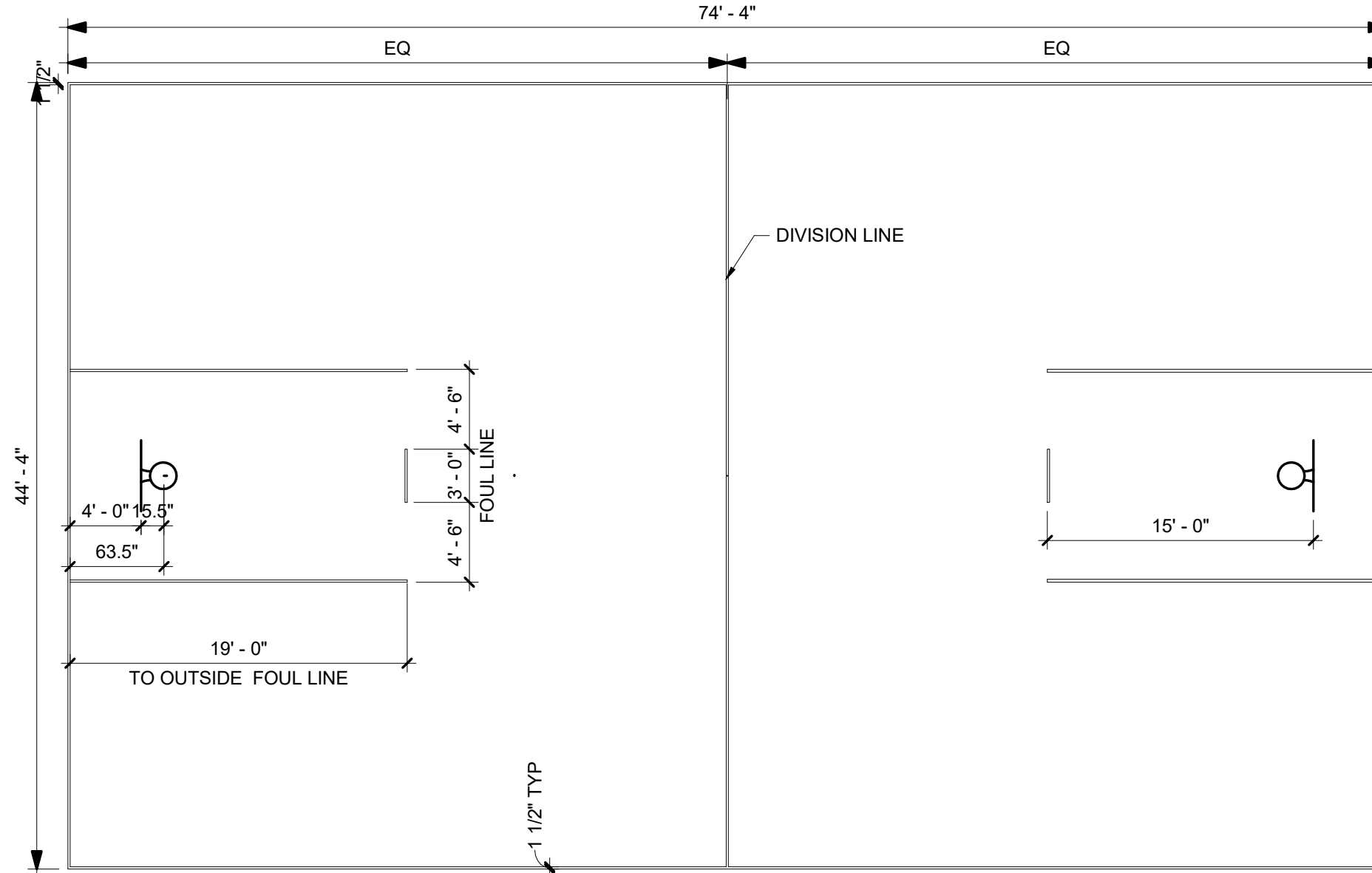
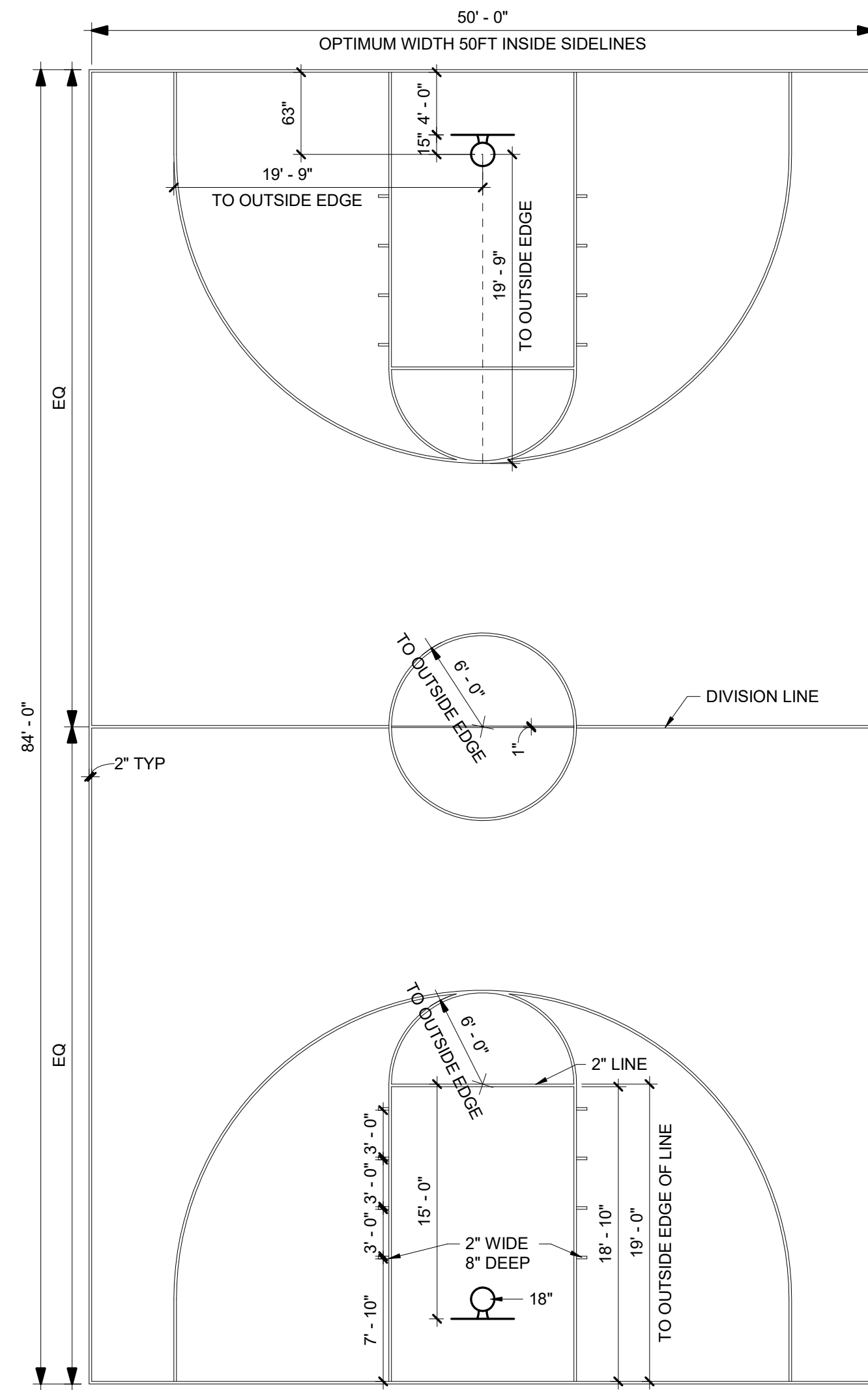


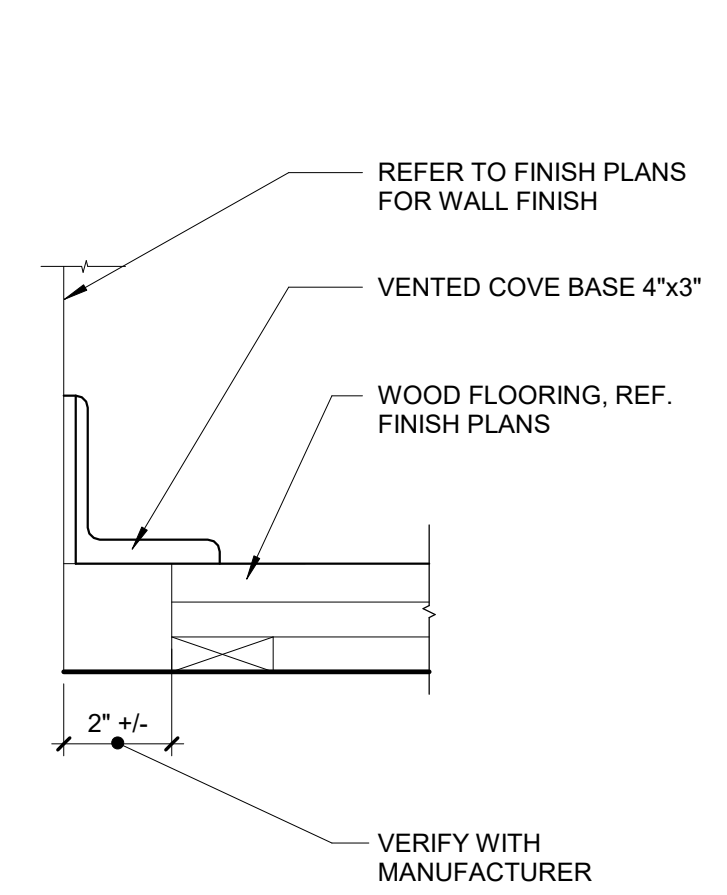
3 Volleyball Court Striping
1/8" = 1'-0"



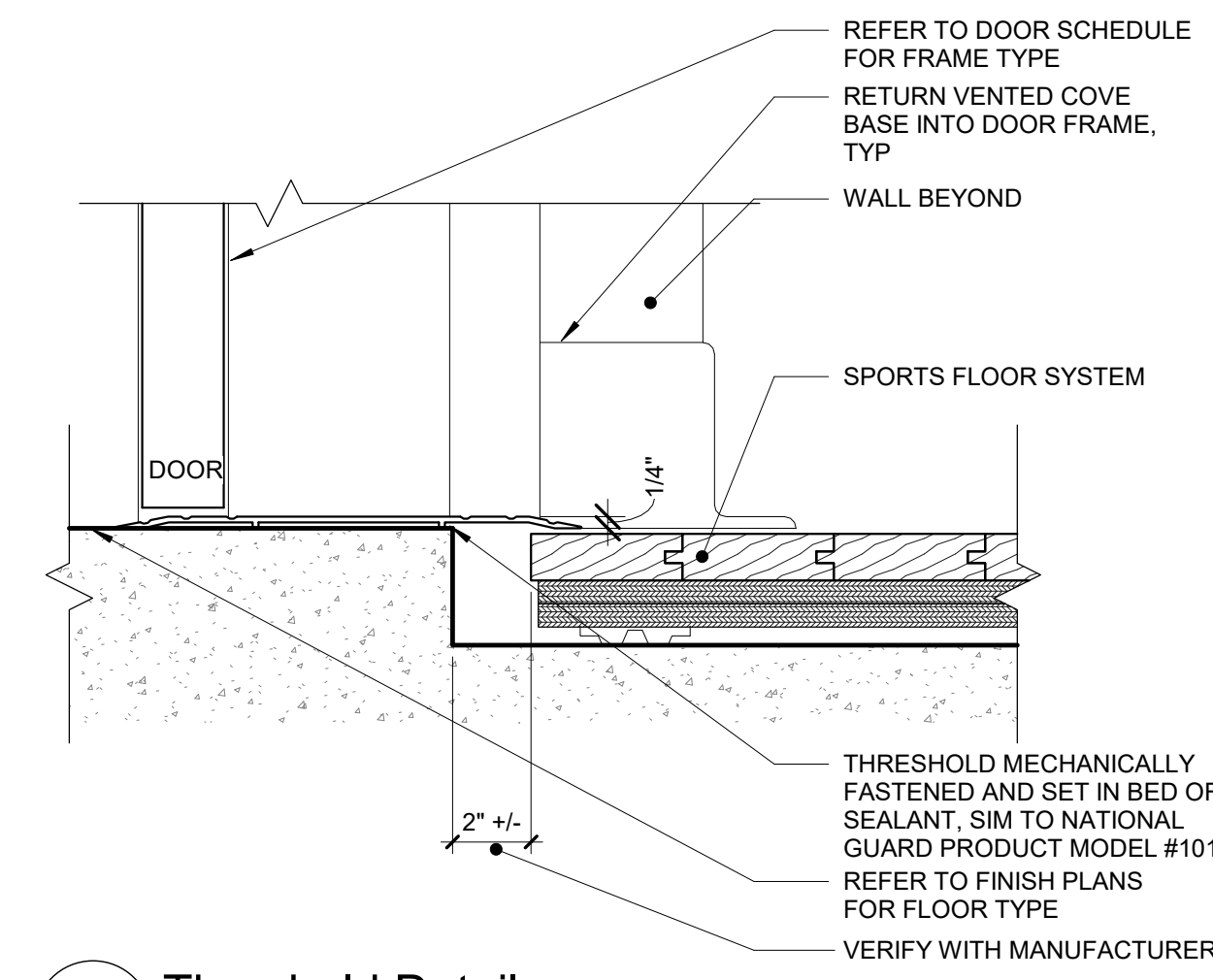
2 Basketball Side Court Striping
1/8" = 1'-0"



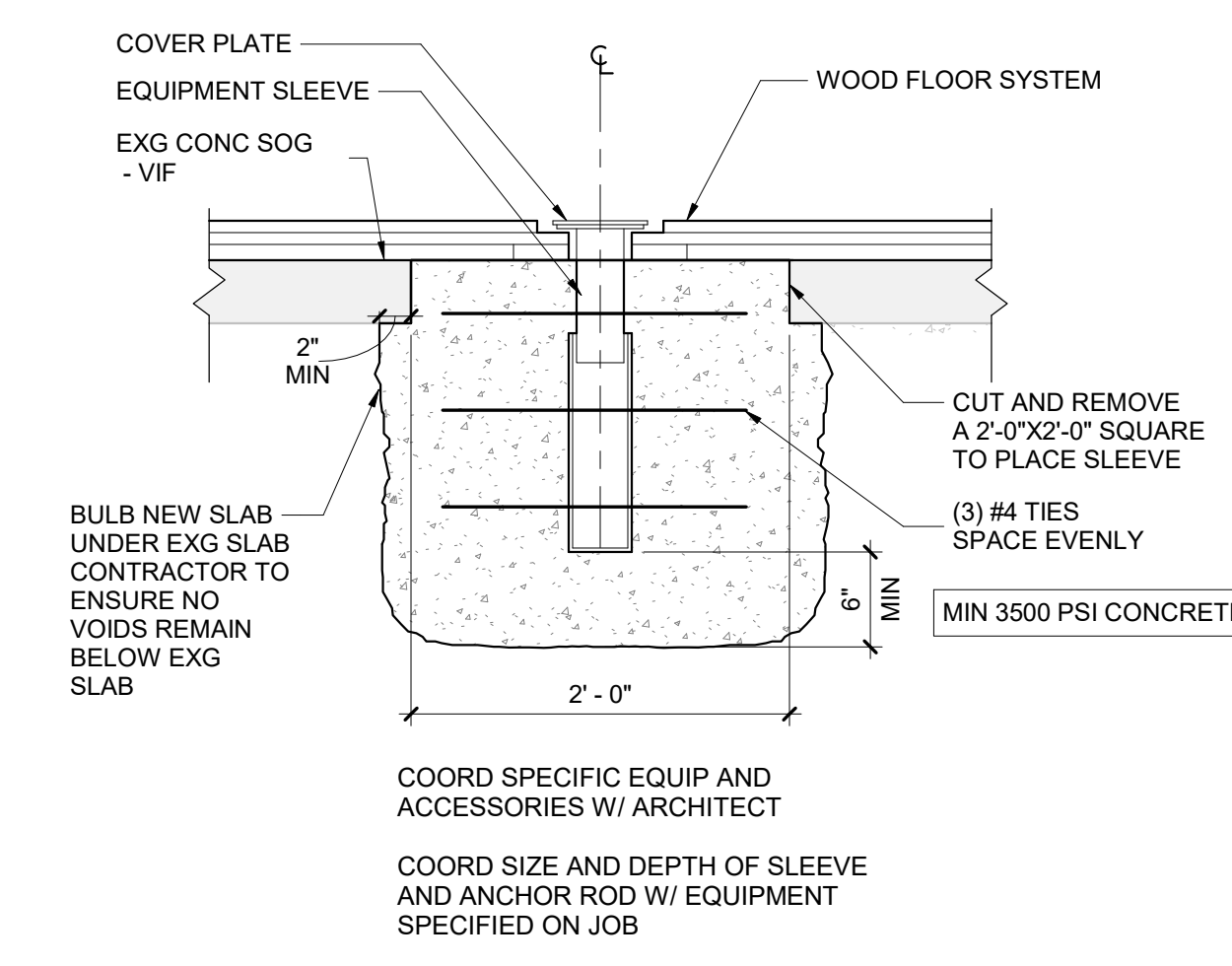
1 Basketball Main Court Striping
1/8" = 1'-0"



6 Vented Cove Base
1 1/2" = 1'-0"



5 Threshold Detail
3" = 1'-0"



4 New Equipment Sleeve
1" = 1'-0"

- ### General Plan Notes
- A. WHERE EXISTING CONSTRUCTION IS DAMAGED OR DISTURBED, PATCH AS REQUIRED TO RESTORE SURFACES TO THEIR ORIGINAL CONDITION.
 - B. PARTITION TYPE TAGS APPLY TO ENTIRE LENGTH OF WALL INDICATED BY THAT TAG, REGARDLESS OF OPENINGS WITHIN THAT WALL, TYPICAL UNLESS NOTED OTHERWISE.
 - 1. ALL INTERIOR WALLS SHALL BE WALL/PARTITION TYPE PZ6, TYPICAL UNLESS NOTED OTHERWISE.
 - 2. PROVIDE WOOD BLOCKING WITHIN METAL STUD PARTITIONS FOR ALL WALL MOUNTED ITEMS, TYP.
 - C. INFILL AREAS OF RECESSED FLOOR MAT AND/OR FINISH REMOVALS WITH REPAIR MATERIAL PROVIDE SUBSTRATE LEVEL AS REQUIRED SO SCHEDULED FINISHED FLOOR WILL MATCH THAT OF EXISTING ADJACENT AREAS.
 - D. PROVIDE BRACING WITHIN CHASES AS FOLLOWS:
 - 1. MASONRY WALLS - FULL-HEIGHT 4" CMU BRACES AT MAXIMUM SPACING OF 11'-0" OC.
 - 2. GYPSUM BOARD/TILE BACKING PANELS ON METAL FRAMING - FULL-HEIGHT 6" METAL STUD BRACES AT MAXIMUM SPACING OF 11'-0" OC.
 - E. PROVIDE TOP OF WALL WIND CLIPS / RETURNS AS FOLLOWS:
 - 1. FOR 4" MASONRY PROVIDE RETURNS @ 8 FT OC MAX
 - 2. FOR 6" UNBRACED MASONRY OVER 12 FT LONG PROVIDE TOP OF WALL WIND CLIPS PER STRU DETAIL 15/AS600
 - 3. FOR 8" UNBRACED MASONRY OVER 16 FT LONG PROVIDE TOP OF WALL WIND CLIPS PER STRU DETAIL 15/AS600

S.E.D. Control No. 62-18-01-06-0-007-019

| | | |
|--|--|--|
| | | |
| | | |
| | | |
| | | |
| | | |
| | | |
| | | |
| | | |
| | | |
| | | |

| Rev. No.: | Date: | Description: |
|-----------|-------|--------------|
|-----------|-------|--------------|



complex world
CLEAR SOLUTIONS

Tetra Tech Engineers, Architects
& Landscape Architects, P.C.

BID SET



Walkkill Central School District
Walkkill, New York

Reconstruction to:
Walkkill Senior High School

Court Striping Layouts

| | | |
|-----------------------------|---------------------|-----------------|
| Drawn By: TS | Date: 06/30/2023 | Drawing Number: |
| Project No.: 17597-22002 | | AA403 |