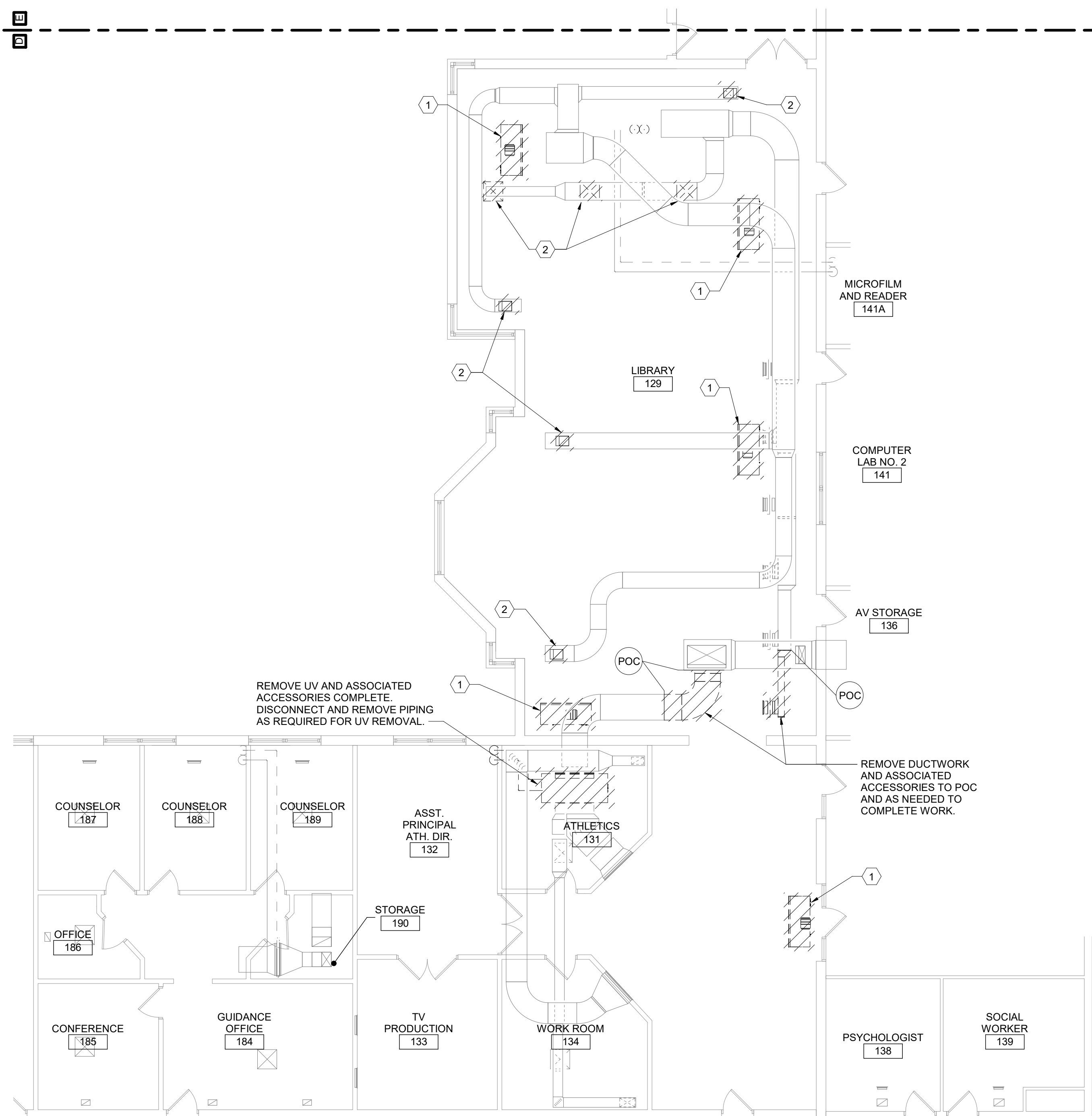
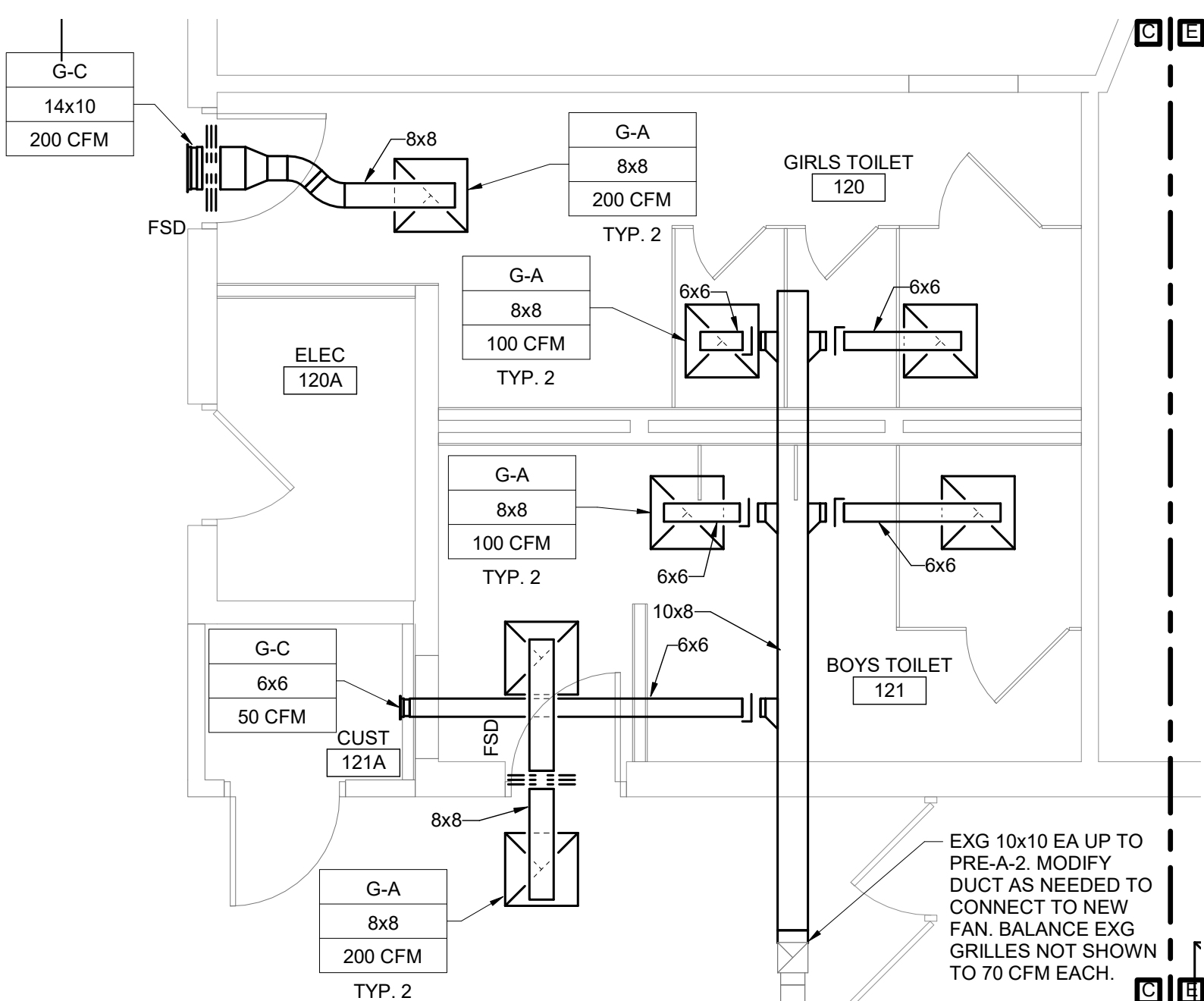


3 Partial First Floor Plan - Area D
1/8" = 1'-0"

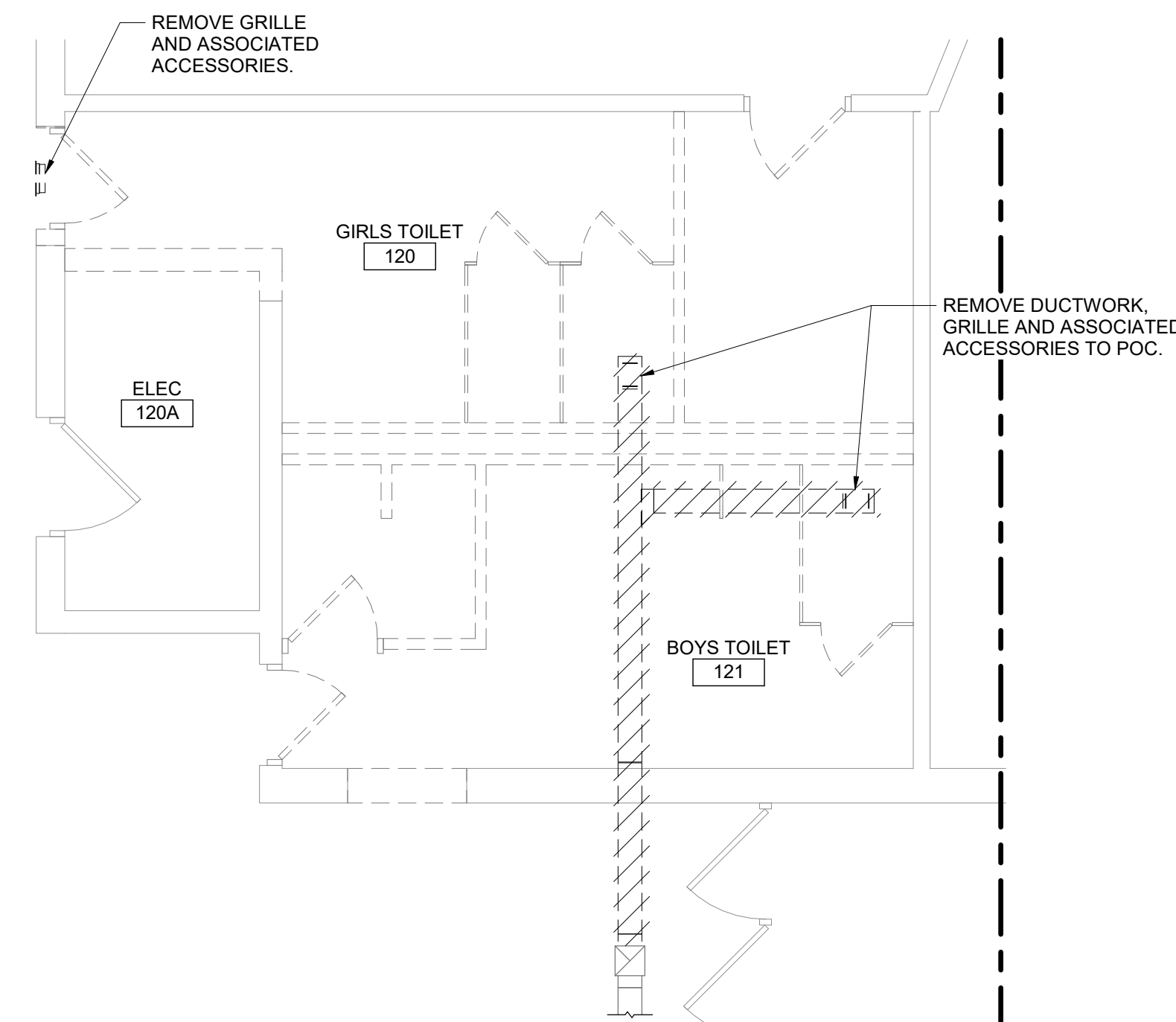
LOBBY
126



1 Partial First Floor Demolition Plan - Area D
1/8" = 1'-0"



4 Partial First Floor Plan - Area B - Toilet Rooms
1/4" = 1'-0"



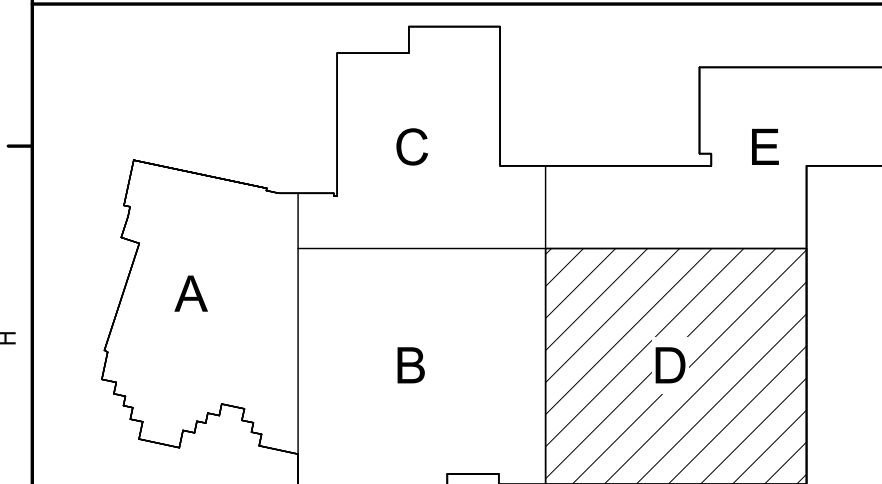
2 Partial First Floor Demolition Plan - Area B - Toilet Rooms
1/4" = 1'-0"

General Notes

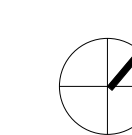
A. REFER TO AM050 FOR GENERAL NOTES.

Keyed Notes

- REMOVE AC UNIT AND ASSOCIATED ACCESSORIES COMPLETE. DISCONNECT, EVACUATE AND RECLAIM REFRIGERANT. DISPOSE OF REFRIGERANT IN ACCORDANCE WITH ASHRAE 15. REMOVE IN-LINE FAN ABOVE CEILING AND ASSOCIATED FLEXIBLE DUCTWORK.
- REMOVE CEILING DIFFUSER/GRILLE. DUCT TO REMAIN. PREPARE FOR RECONNECTION.
- RS AND RL UP TO RCU ON ROOF. VERIFY LINE SIZES WITH UNIT MANUFACTURER. PROVIDE 1" CD UP TO ROOF. SEE DETAIL 11/AM500 FOR ADDITIONAL INFORMATION.



Key Plan
N.T.S.



S.E.D. Control No. 62-18-01-06-0-007-019

Rev. No.: Date: Description:



complex world
CLEAR SOLUTIONS

Tetra Tech Engineers, Architects
& Landscape Architects, P.C.



Wallkill Central School District
Wallkill, New York

Reconstruction to:
Wallkill Senior High School

First Floor Plans - Partial Areas B & D

Drawn By:
JPF1/pgm

Date:
06/30/2023

Drawing Number:

Project No.:
17597-22002

AM102

BID SET