

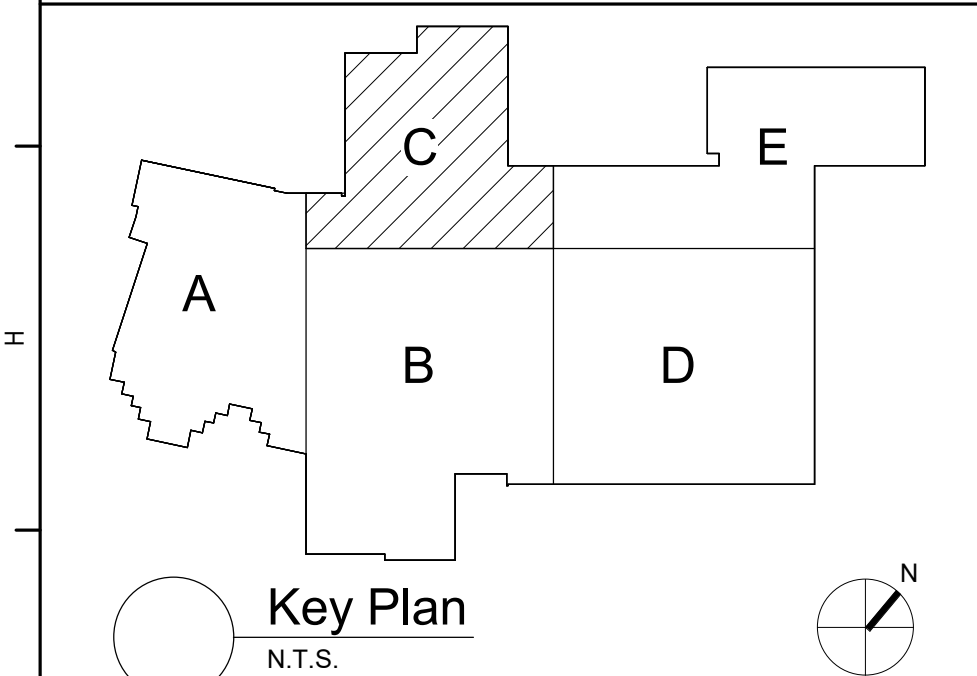


Keyed Notes:

- 1 VERIFY TEACHING WALL IN EACH CLASSROOM WITH OWNER AND ADD ADDITIONAL 4 BUTTON LOW VOLTAGE LIGHTING CONTROL.
- 2 CONNECT LUMINAIRES TO PREVIOUSLY PRESERVED CIRCUITRY. EXTEND/MODIFY AS NECESSARY.
- 3 CONNECT LUMINAIRES TO PREVIOUSLY PRESERVED CIRCUITRY AND KEYPAD SWITCHES. EXTEND/MODIFY AS NECESSARY.
- 4 REMOVE WALL MOUNTED DEVICES TO ACCOMMODATE CEILING REPLACEMENT. PRESERVE AND REINSTALL DEVICES AFTER CEILING REPLACEMENT. EXTEND / MODIFY CIRCUITRY AS NECESSARY. COORDINATE ALL WORK WITH GENERAL CONTRACTOR.

General Notes:

- |   |   |
|---|---|
| A | REFER TO DRAWING AE690 FOR GENERAL NOTES  |
|   |   |
|   |   |
|   |   |
| E | REFER TO AE690 PANEL BOARD SCHEDULES FOR ADDITIONAL INFORMATION   |
|   |   |
|   |   |
|   |   |
| C | LIGHTING CONTROL SEQUENCES:<br>CLASSROOMS:<br>D2 ZONE: TEACHING WALL AND GENERAL CLASSROOM EACH EQUIPPED WITH A (4) BUTTON LOW VOLTAGE LIGHTING CONTROL BUTTON CAPABLE OF: ON/OFF, 50% AND 100% MAY BE MANUALLY ADJUSTED BY EACH LOW VOLTAGE LIGHTING CONTROL PER ZONE. UNOCCUPIED AREAS AFTER 15 MINUTES OF UNOCCUPIED LUMINAIRES WILL TURN OFF WITHIN 15 MINUTES. ONCE ROOM OCCUPYING AREAS ARE OCCUPIED, LUMINAIRES WILL TURN ON TO LAST LEVEL OR LAST LEVEL SELECTED. DAYLIGHT RESPONSIVE CONTROL WILL DIM ROW OF LUMINAIRES CLOSEST TO WINDOW TO TARGET POINT OF ROOM (30FC) TO MAINTAIN UNIFORMITY OF ILLUMINATION. |
|   | CORRIDORS/STAIRS:<br>ENTERING THE AREA, LUMINAIRES TURN ON TO 100% OUTPUT AUTOMATICALLY BY OCCUPANCY SENSOR. PERSON EXITS THE AREA, LUMINAIRES TURN TO 50% OUTPUT (MAINTAINING INGRESS ILLUMINATION). MANUAL CONTROL BY EXISTING LINE VOLTAGE KEYPAD SWITCH.  |
|   | ENTERING THE ROOM AND LUMINAIRES TURN ON TO 50% OUTPUT BY OCCUPANCY SENSOR. WHEN PERSON EXITS THE ROOM, LUMINAIRES OCCUPANCY SENSOR WILL TURN OFF LUMINAIRES AFTER 15 MINUTES. LOW VOLTAGE LIGHTING CONTROL BUTTON CAPABLE OF: ON/OFF, 50% AND 100% MAY BE MANUALLY ADJUSTED.   |
|   |   |



S.E.D. Control No. 62-18-01-06-0-007-019


Rev. No.:	Date:	Description:
-----------	-------	--------------



complex world | CLEAR SOLUTIONS

Tetra Tech Engineers, Architects  
& Landscape Architects, P.C.



Wallkill Central School District  
Wallkill, New York

M	Reconstruction to: Wallkill Senior High School
---	---

Second Floor Lighting Plan - Area C

N	Drawn By: CR/ded	Date: 06/30/2023	Drawing Number:
	Project No.: 17597-22002		AE134

AE134