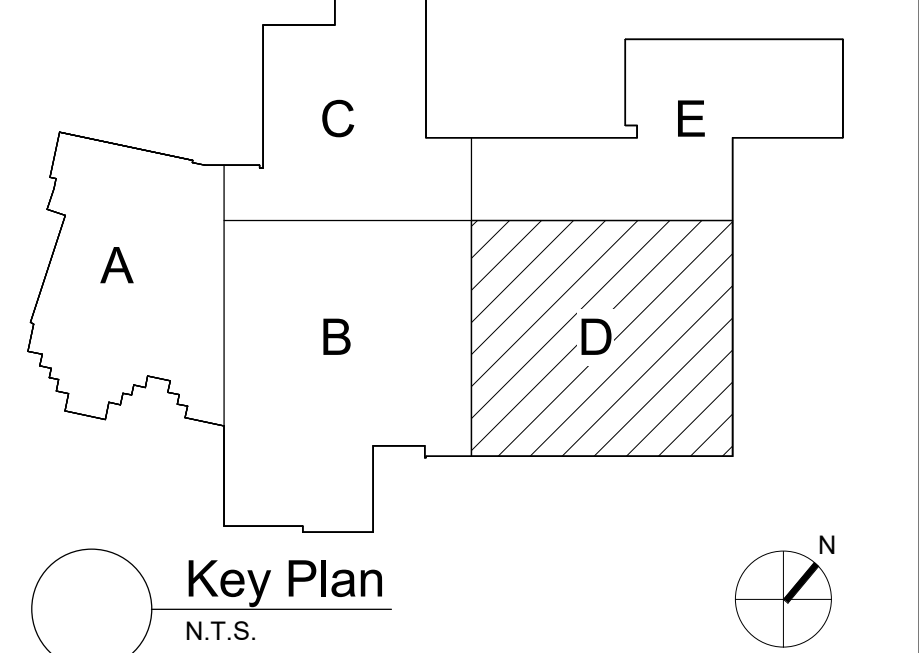
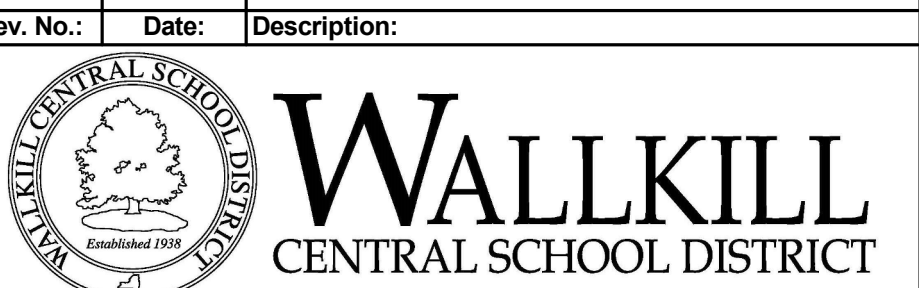


- Keyed Notes:**
1. VERIFY TEACHING WALL IN EACH CLASSROOM WITH OWNER AND ADD ADDITIONAL 4 BUTTON LOW VOLTAGE LIGHTING CONTROL.
  2. CONNECT LUMINAIRES TO PREVIOUSLY PRESERVED CIRCUITRY. EXTEND/MODIFY AS NECESSARY.
  3. CONNECT LUMINAIRES TO PREVIOUSLY PRESERVED CIRCUITRY AND KEYED SWITCHES. EXTEND/MODIFY AS NECESSARY.

- General Notes:**
- A. REFER TO DRAWING AE050 FOR GENERAL NOTES
- B. REFER TO AE600 PANEL BOARD SCHEDULES FOR ADDITIONAL INFORMATION
- C. LIGHTING CONTROL SEQUENCES:  
CLASSROOMS:  
(2) ZONE, TEACHING WALL AND GENERAL CLASSROOM EACH OPERATED WITH A (4) BUTTON LOW VOLTAGE LIGHTING CONTROL. BUTTON CAPABLE OF ON/OFF, 50% AND 100% MAY BE MANUALLY ADJUSTED BY EACH LOW VOLTAGE LIGHTING CONTROL PER ZONE. IF LUMINAIRES ARE LEFT ON AND CLASSROOM IS UNOCCUPIED LUMINAIRES WILL TURN OFF WITHIN 15 MINUTES. ONCE ROOM BECOMES OCCUPIED AGAIN LUMINAIRES WILL TURN ON TO LAST LEVEL OR LAST LEVEL SELECTED. DAYLIGHT RESPONSIVE CONTROL WILL DIM ROW OF LUMINAIRES CLOSEST TO WINDOW TO PRESET SET POINT OF ROOM (30FC) TO MAINTAIN UNIFORMITY OF ILLUMINATION.  
CORRIDORS:  
PERSON ENTERS THE AREA, LUMINAIRES TURN ON TO 100% OUTPUT AUTOMATICALLY BY OCCUPANCY SENSOR. PERSON EXITS THE AREA, LUMINAIRES DIM TO 50% OUTPUT (MAINTAINING EGRESS LEVEL ILLUMINATION). MANUAL CONTROL BY EXISTING LINE VOLTAGE KEYED SWITCH.  
OFFICES:  
PERSON ENTERS THE ROOM AND LUMINAIRES TURN ON TO 50% OUTPUT BY OCCUPANCY SENSOR. WHEN PERSON EXITS THE ROOM THE OCCUPANCY SENSOR WILL TURN OFF THE LUMINAIRES AFTER 15 MINUTES. LOW VOLTAGE LIGHTING CONTROL. BUTTON CAPABLE OF ON/OFF, 50% AND 100% MAYBE BE MANUALLY ADJUSTED BY BUTTON.



S.E.D. Control No. 62-18-01-06-0-007-019



complex world | CLEAR SOLUTIONS

Tetra Tech Engineers, Architects & Landscape Architects, P.C.

**BID SET**



Wallkill Central School District  
Wallkill, New York

Reconstruction to:  
Wallkill Senior High School

Second Floor Lighting Plan - Area D

Drawn By: CR/ded Date: 06/30/2023 Drawing Number:  
Project No.: 17597-22002 **AE135**