

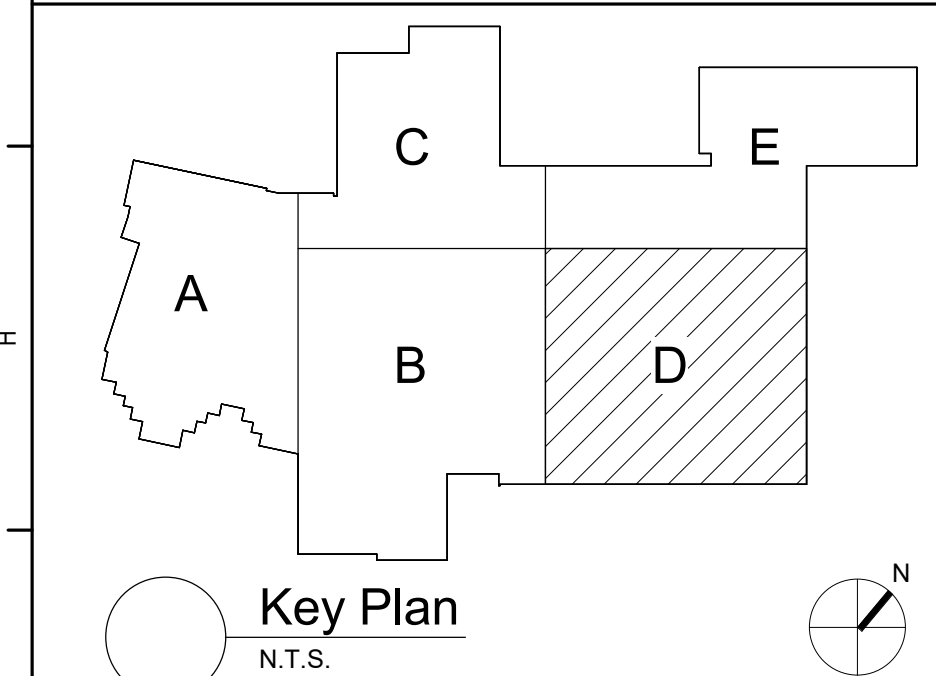
1 First Floor Power Plan - Area D
1/8" = 1'-0"

Keyed Notes:

- 1 CONNECT HP TO CORRESPONDING RCU PER MANUFACTURERS REQUIREMENTS.
- 2 RE-CONNECT STORED CEILING MOUNTED ELECTRICAL DEVICES. MODIFY/ EXTEND CIRCUITRY AS REQUIRED
- 3 REMOVE WALL MOUNTED DEVICES TO ACCOMODATE CEILING REPLACEMENT. PRESERVE AND REINSTALL DEVICES AFTER CEILING REPLACEMENT. EXTEND / MODIFY CIRCUITRY AS NECESSARY. COORDINATE ALL WORK WITH GENERAL CONTRACTOR.

General Notes:

- A. REFER TO DRAWING AE050 FOR GENERAL NOTES
- B. REFER TO AE600 PANEL BOARD SCHEDULES FOR ADDITIONAL INFORMATION



S.E.D. Control No. 62-18-01-06-0-007-019

Rev. No.: Date: Description:



complex world
CLEAR SOLUTIONS

Tetra Tech Engineers, Architects
& Landscape Architects, P.C.



Wallkill Central School District
Wallkill, New York

Reconstruction to:
Wallkill Senior High School

First Floor Power Plan - Area D

Drawn By: GLK/ded Date: 06/30/2023 Drawing Number:
Project No.: 17597-22002
AE161