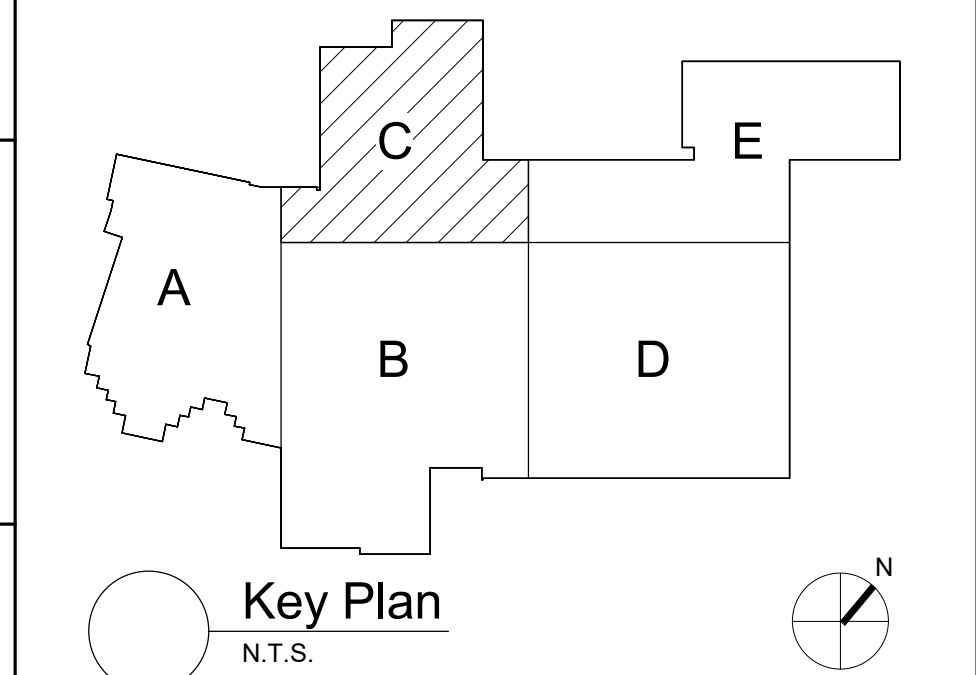


1 Second Floor Power Plan - Area C  
1/8" = 1'-0"

**Keyed Notes:**

- 1 PROVIDE (3W10, (1)W10G IN 1/2" C. TO PANEL PG. PROVIDE 25A, 208V, 3P BREAKER IN PANEL PG. UPDATE PANEL SCHEDULE AS NECESSARY.
- 2 RE-CONNECT STORED CEILING MOUNTED ELECTRICAL DEVICES. MODIFY/ EXTEND CIRCUITRY AS REQUIRED
- 3 REMOVE WALL MOUNTED DEVICES TO ACCOMODATE CEILING REPLACEMENT. PRESERVE AND REINSTALL DEVICES AFTER CEILING REPLACEMENT. EXTEND / MODIFY CIRCUITRY AS NECESSARY. COORDINATE ALL WORK WITH GENERAL CONTRACTOR.



S.E.D. Control No. 62-18-01-06-0-007-019

Rev. No.:	Date:	Description:



complex world  
CLEAR SOLUTIONS

Tetra Tech Engineers, Architects  
& Landscape Architects, P.C.

**BID SET**



Wallkill Central School District  
Wallkill, New York

Reconstruction to:  
Wallkill Senior High School

Second Floor Power Plan - Area C

Drawn By: GLK/ded	Date: 06/30/2023	Drawing Number: <b>AE163</b>
Project No.: 17597-22002		