

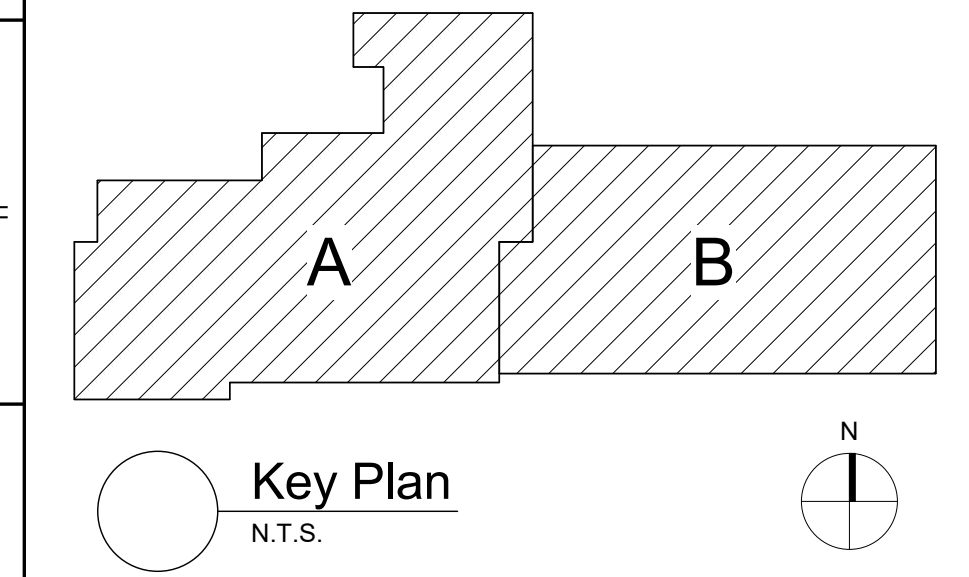
2 Partial First Floor Reflected Ceiling Plan - Locker Room  
1/8" = 1'-0"

1 First Floor Reflected Ceiling Plan  
1/8" = 1'-0"

3 Soffit Detail  
1" = 1'-0"

- ### General Ceiling Notes
- A. LIGHTING AND OTHER CEILING-MOUNTED FIXTURES ARE SHOWN FOR DRAWING CLARITY. COORDINATE ALL CEILING WORK PRIOR TO INSTALLATION OF CEILING GRID.
  - B. CEILING HEIGHT IS 9'-0" ABOVE FINISHED FLOOR (UNO).
  - C. CENTER CEILING-MOUNTED ITEMS (LIGHTS, GRILLES, DETECTORS, SPRINKLER HEAD, ETC) WITHIN THE CEILING PANELS AND GRIDS UNLESS THE PANELS ARE SCORED. CENTER ITEMS WITHIN THE PATTERN OF SCORED PANELS.
  - D. PROVIDE EXPANSION JOINT (EJ) COVERS IN CEILINGS AND SOFFITS AT EJ LOCATIONS.
  - E. PROVIDE CONTROL JOINTS IN GYPSUM BOARD CEILINGS AND SOFFITS AS DETAILED ON DRAWINGS (MAXIMUM 20'-0" OC, EVENLY SPACED, TYP UNO).
  - F. PATCH CEILING SYSTEMS TO REMAIN THAT HAVE BEEN DISTURBED BY SCHEDULED WORK TO MATCH ADJACENT CONSTRUCTION PRIOR TO PAINTING.
  - G. (X) 9'-0" DESIGNATES BOTTOM OF CEILING ABOVE FINISHED FLOOR AT THAT POINT UNO. DESIGNATION "ME" INDICATES MATCH EXISTING CEILING HEIGHT.
  - H. PATCH WALLS TO MATCH EXISTING ADJACENT FINISHES AT LOCATIONS OF LINEAR LIGHT FIXTURE REMOVALS.
  - J. CEILING PERIMETER TRIM TO WRAP AROUND EXISTING TO REMAIN WALL MOUNTED ITEMS AND WINDOW TRIM AS REQUIRED DUE TO CEILING HEIGHTS BEING LOWERED. NEW CEILINGS ARE NOT TO EXTEND BELOW EXISTING WINDOW HEADS AS THEY WOULD CONFLICT WITH EXISTING WINDOW SHADES.

- ### Ceiling Types
- (A1) X-X" ACOUSTIC PANEL CEILING
  - (A3) X-X" ACOUSTIC TECTUM PANEL CEILING
  - (B) X-X" PAINTED 5/8" GYPSUM CEILING ON SUPPORT MATERIALS (GRID SUSPENSION SYSTEM, TYP UNO)



S.E.D. Control No. 62-18-01-06-0-002-015

Rev. No.:	Date:	Description:



complex world  
CLEAR SOLUTIONS

Tetra Tech Engineers, Architects  
& Landscape Architects, P.C.

**BID SET**



Wallkill Central School District  
Wallkill, New York

Reconstruction to:  
John G. Borden Middle School

First Floor Reflected Ceiling Plan &  
Partial Locker Room Reflected Ceiling  
Plan

Drawn By: TS	Date: 06/30/2023	Drawing Number:
Project No.: 17597-22002	BA160	