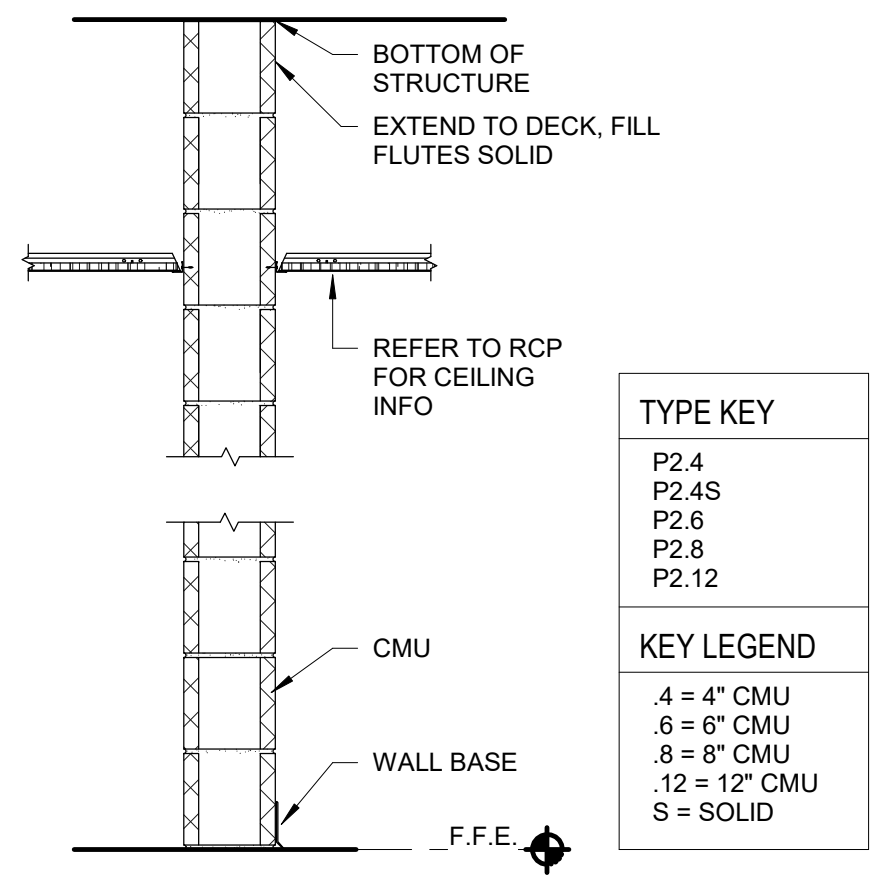
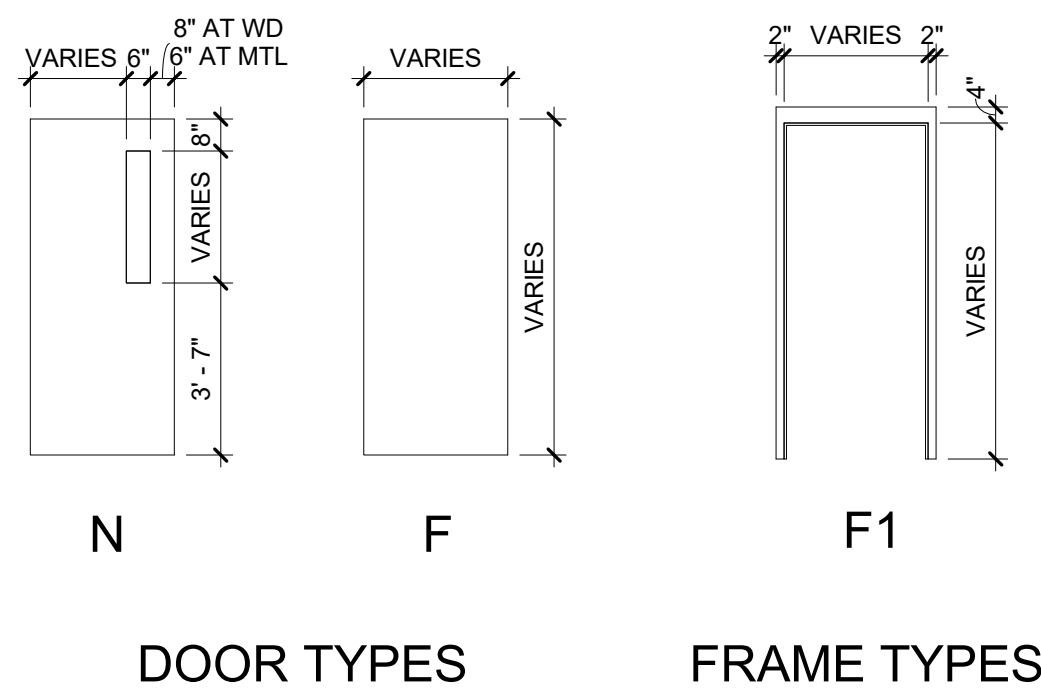
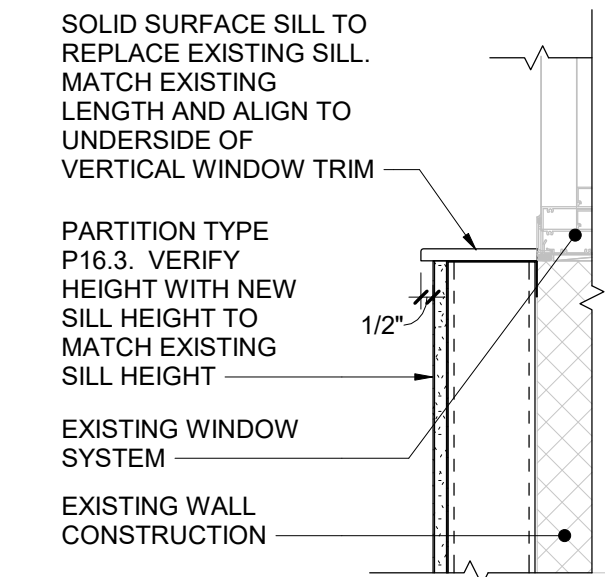


Door Schedule																		
ROOM NUMBER	DOOR NUMBER	DOOR								FRAME								REMARKS
		TYPE	MATERIAL	WIDTH	HEIGHT	RATING	GLAZING	TYPE	MATERIAL	WIDTH	HEIGHT	RATING	GLAZING	HEAD	JAMB	SILL	HDW SET	
1st FLOOR HIGH																		
138A	1	F	WD	3'-0"	7'-0"	20 MIN	-	F1	HM	3'-4"	7'-4"	20 MIN	-	H1	J1		B1	FRAME ONLY - NO HARDWARE
138A	2	-	-	0"	0"	-	-	F1	HM	3'-4"	7'-4"	-	-	H2	J2			
139	1	N	WD	3'-6"	7'-0"	20 MIN	FP	F1	HM	3'-10"	7'-4"	20 MIN	-	H1	J1		B1	
142	1	F	WD	3'-0"	7'-0"	20 MIN	-	F1	HM	3'-4"	7'-4"	20 MIN	-	H2	J2			
142	2	-	-	0"	0"	-	-	F1	HM	3'-4"	7'-4"	-	-	H1	J1			FRAME ONLY - NO HARDWARE
218L	1	-	-	0"	0"	-	-	F1	HM	3'-4"	7'-4"	-	-	H2	J2			FRAME ONLY - NO HARDWARE
218M	1	-	-	0"	0"	-	-	F1	HM	3'-4"	7'-4"	-	-	H1	J1			FRAME ONLY - NO HARDWARE

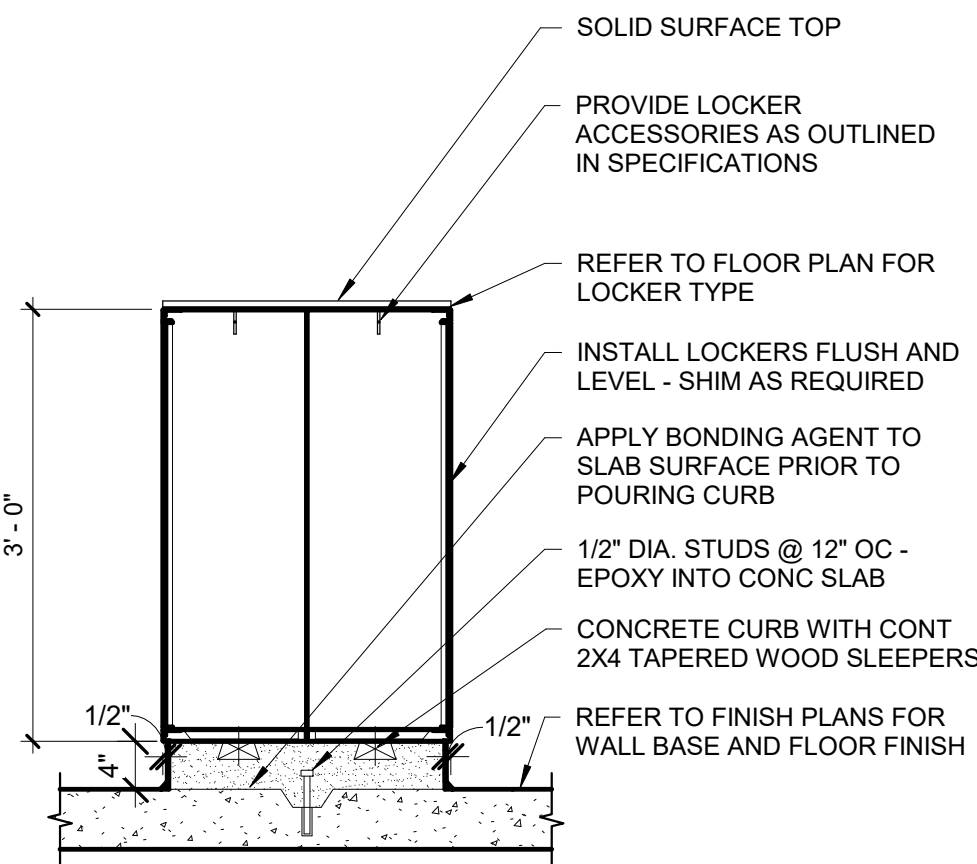


- General Door Notes**
- HARDWARE ON DOORS FROM SPACES OF PUPIL OCCUPANCY SHALL BE A TYPE WHICH WILL ALWAYS PERMIT THE DOOR TO BE OPENED FROM THE INSIDE WITHOUT DIRECT MANIPULATION OF ANY TYPE LOCKING DEVICE.
 - METAL VISION PANEL TRIM SHALL BE PAINTED SAME COLOR AS DOOR FRAMES.
 - ALL DOOR HARDWARE FROM OCCUPIED SPACES SHALL BE OF A TYPE THAT WILL ALWAYS PERMIT THE DOOR TO BE OPENED FROM WITHIN THE SPACE WITHOUT USE OF A KEY.
 - APPLY CONTINUOUS JOINT SEALANT TO ALL JOINTS BETWEEN FRAMES AND WALLS, TYP ALL.
 - PAINT ALL HM DOORS AND FRAMES IN ACCORDANCE W/ SECTION 09000.
 - PROVIDE LINTELS AT ALL DOOR AND WINDOW OPENINGS IN ACCORDANCE WITH LINTEL SCHEDULE ON STRUCTURAL DWGS.
 - NOTE THAT DUE TO REQUIREMENTS IN THE BONS, SOME FIRE RESISTANCE RATINGS MAY DIFFER BETWEEN DOORS (AND ITS GLASS, IF ANY) AND THAT DOOR'S FRAME ESPECIALLY IF THAT FRAME HAS GLASS (SIDELITES; TRANSOMS; ETC).

10 Cafeteria Window Sill
1 1/2" = 1'-0"



7 Athletic Locker Detail with Solid Surface Top
3/4" = 1'-0"



ADA LOCKER REQUIREMENTS:

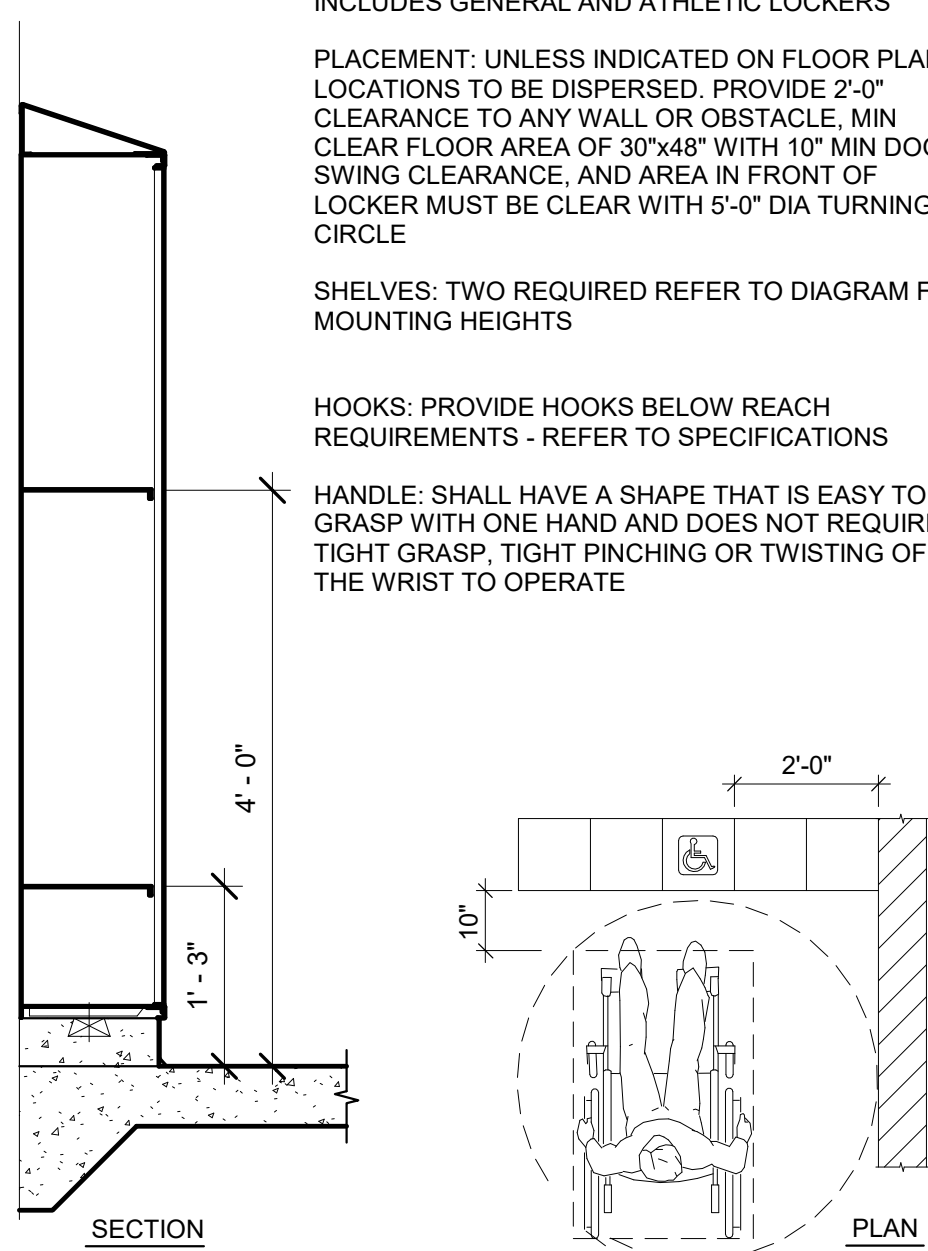
QUANTITY: FIVE PERCENT OF THE TOTAL LOCKERS SHALL MEET ADA ACCESSIBILITY REQUIREMENTS - INCLUDES GENERAL AND ATHLETIC LOCKERS.

PLACEMENT: UNLESS INDICATED ON FLOOR PLANS, LOCATIONS TO BE DISPERSED. PROVIDE 2'-0" CLEARANCE TO ANY WALL OR OBSTACLE. MIN CLEAR FLOOR AREA OF 30"x48" WITH 10" MIN DOOR SWING CLEARANCE. AND AREA IN FRONT OF LOCKER MUST BE CLEAR WITH 5'-0" DIA TURNING CIRCLE.

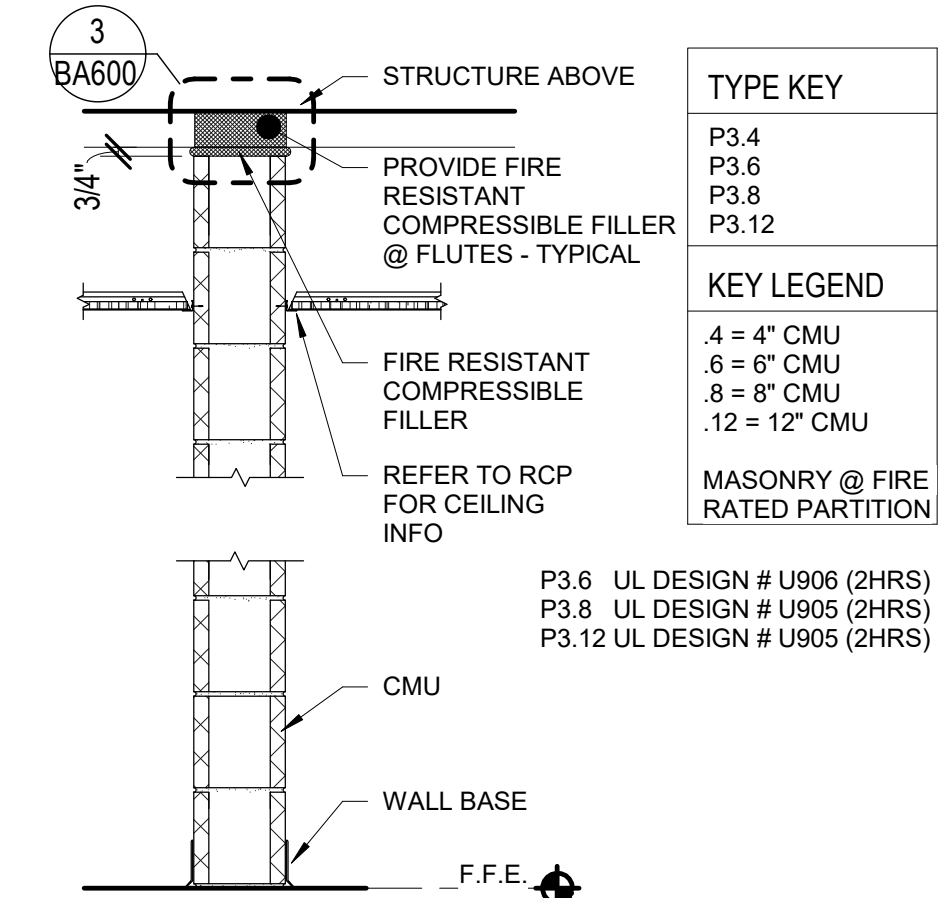
SHELVES: TWO REQUIRED REFER TO DIAGRAM FOR MOUNTING HEIGHTS

HOOKS: PROVIDE HOOKS BELOW REACH REQUIREMENTS - REFER TO SPECIFICATIONS

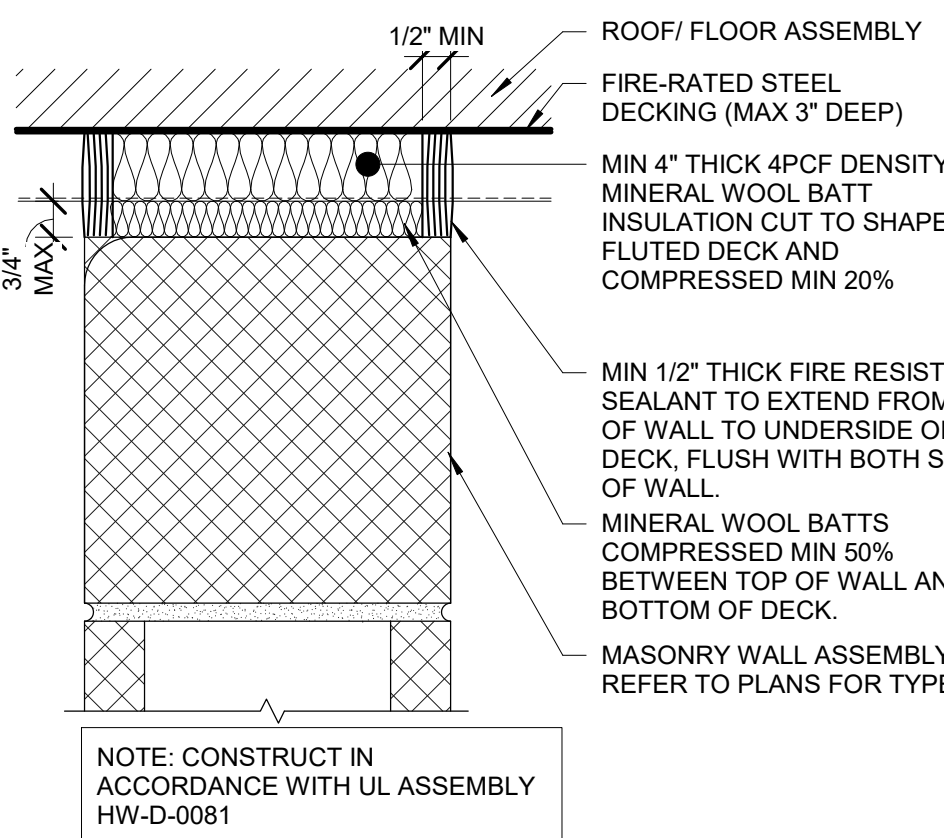
HANDLE: SHALL HAVE A SHAPE THAT IS EASY TO GRASP WITH ONE HAND AND DOES NOT REQUIRE TIGHT GRASP, TIGHT PINCHING OR TWISTING OF THE WRIST TO OPERATE



1 Partition Type P2
3/4" = 1'-0"

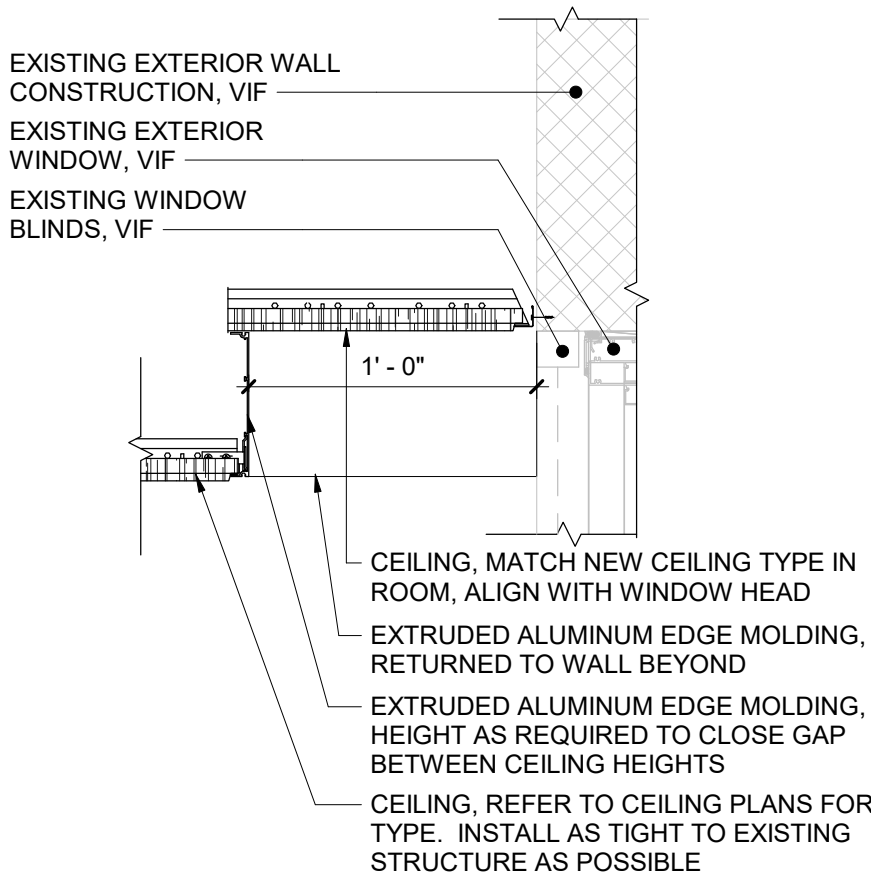


2 Partition Type P3
3/4" = 1'-0"

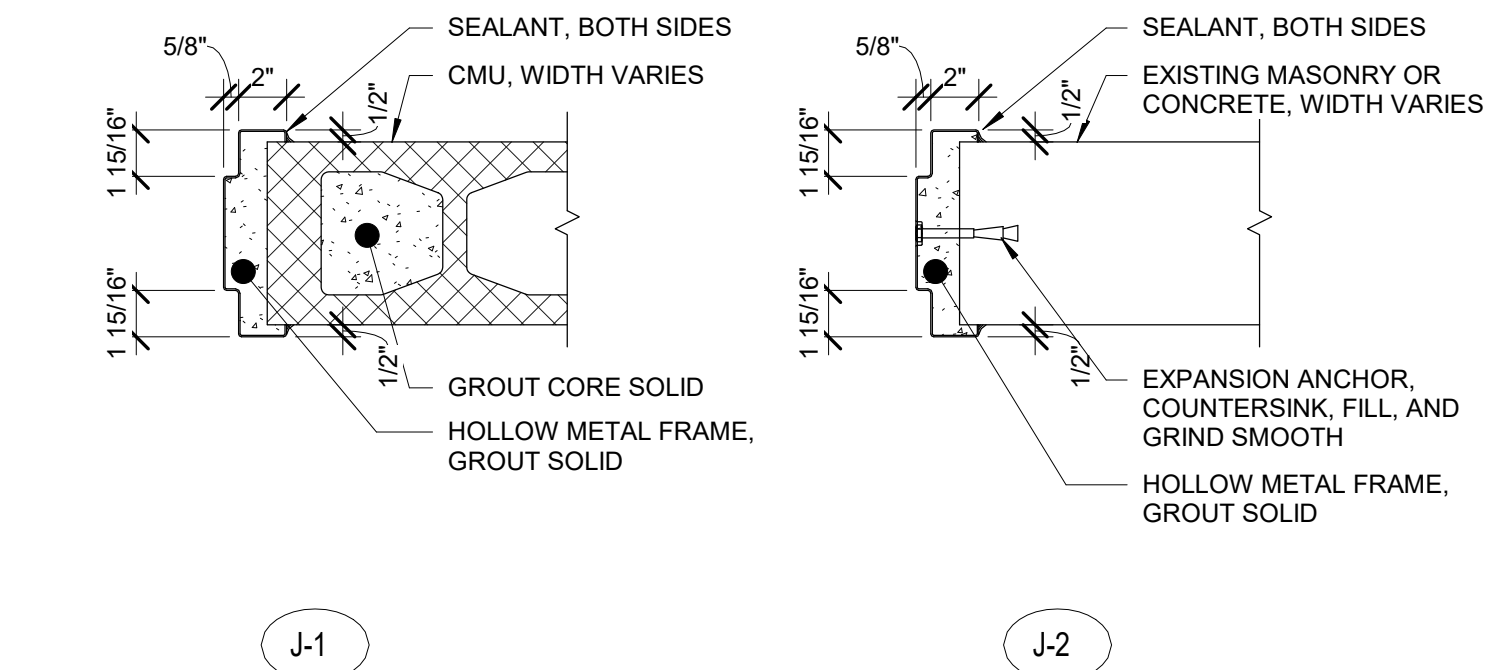


3 Typical Rated Top of Wall Assembly
3" = 1'-0"

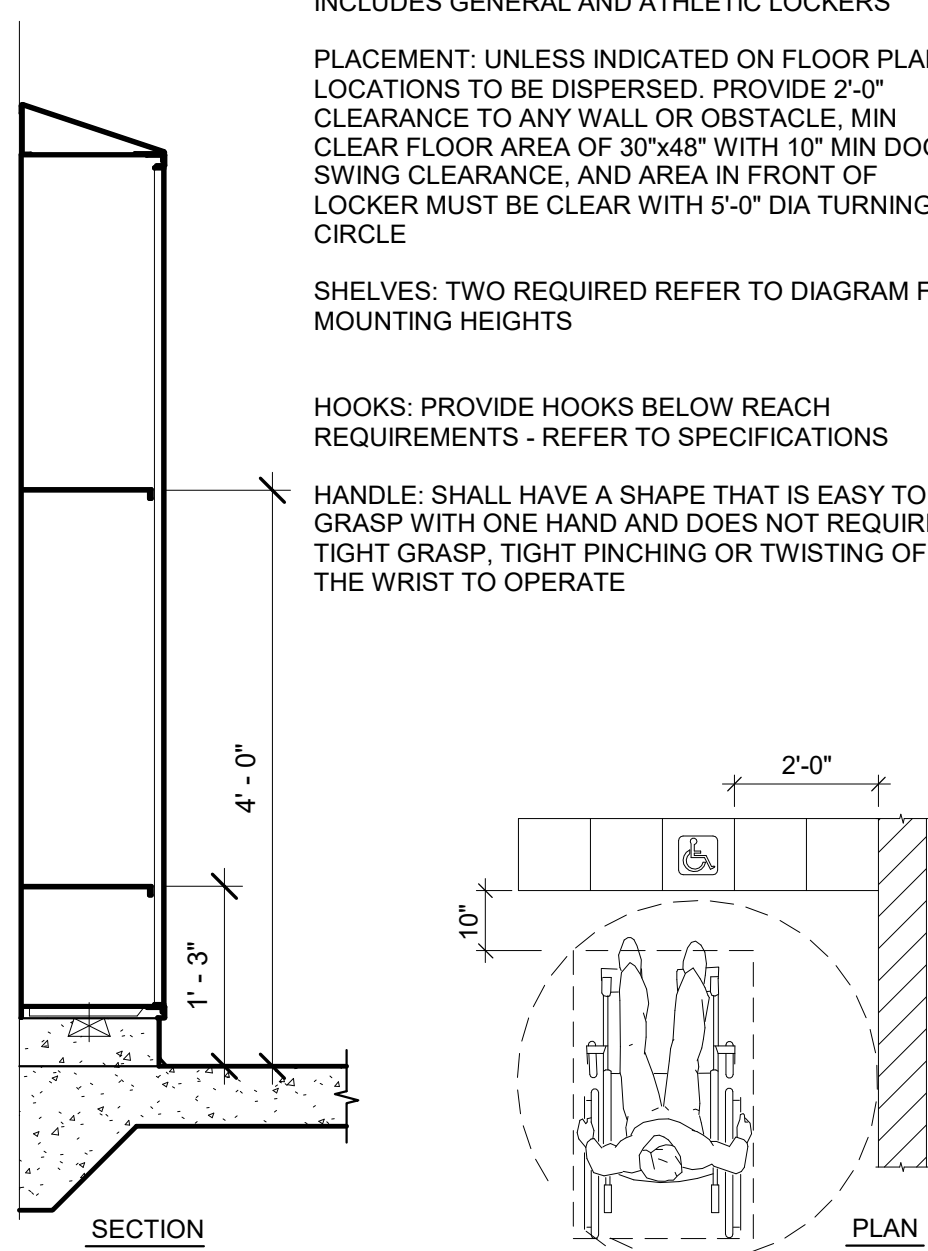
11 Ceiling at Window Detail
1 1/2" = 1'-0"



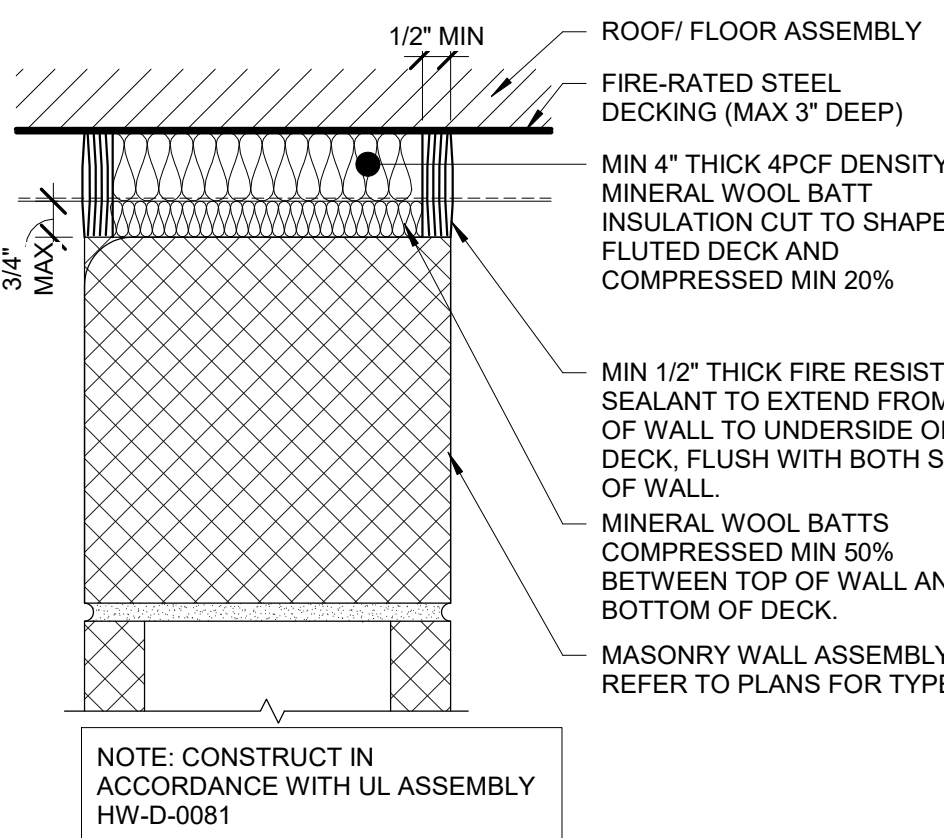
8 Hollow Metal Frame Details
1 1/2" = 1'-0"



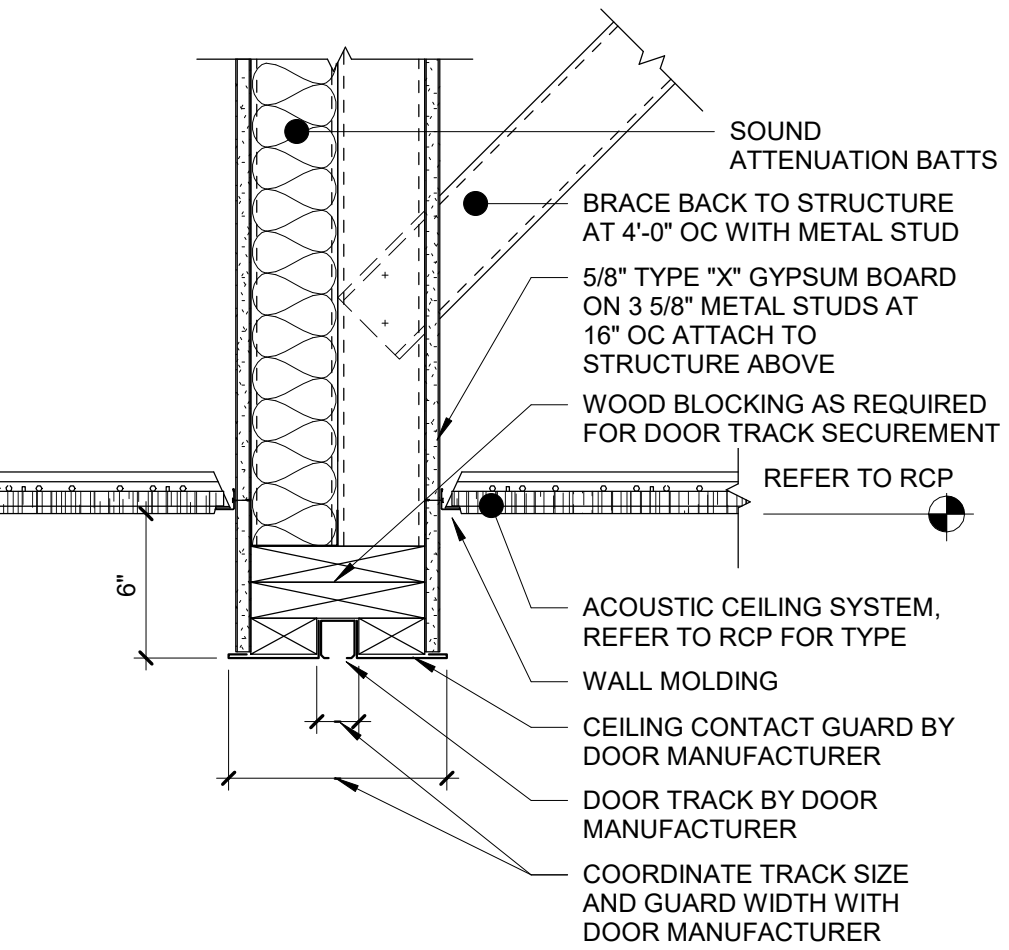
5 Athletic ADA Locker - Forward Reach
3/4" = 1'-0"



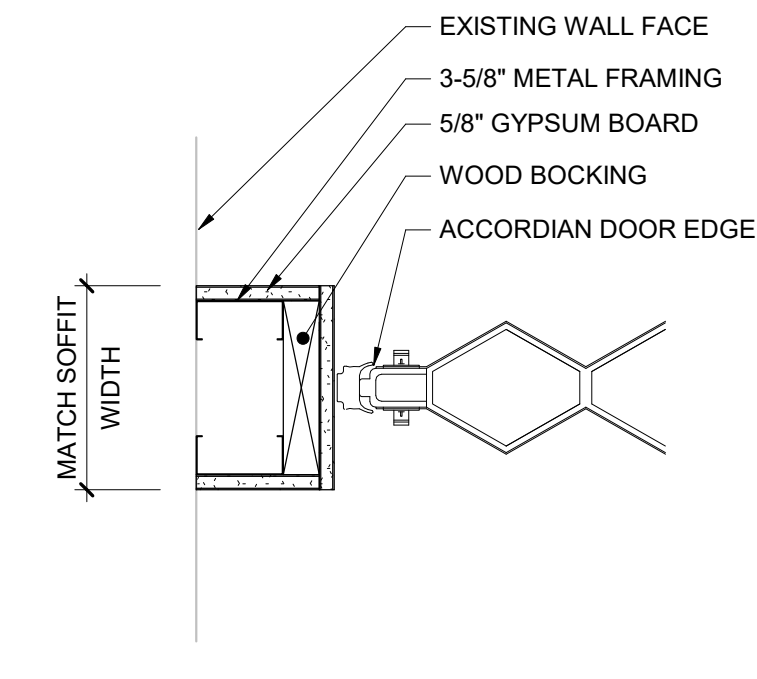
3 Typical Rated Top of Wall Assembly
3" = 1'-0"



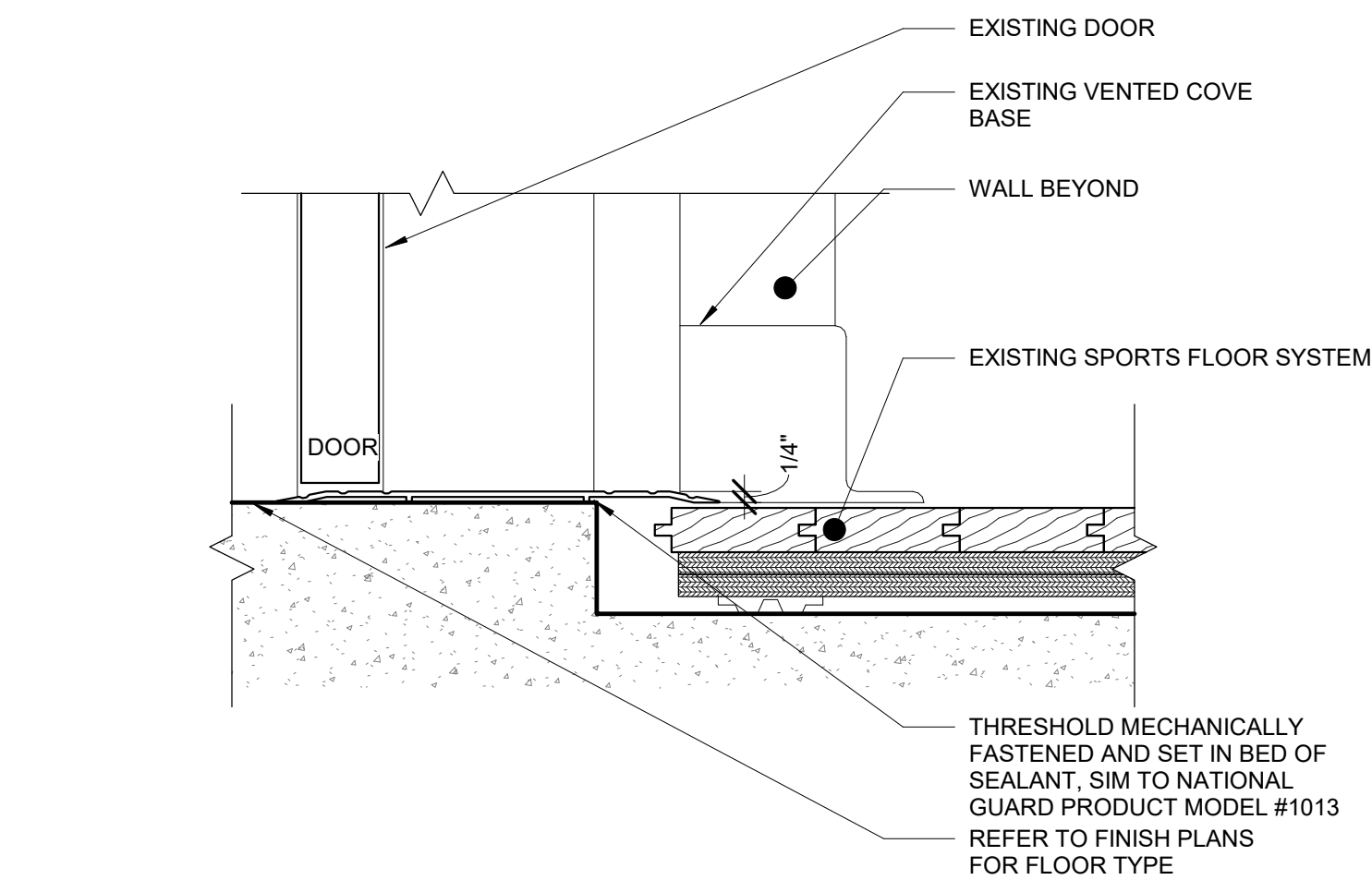
12 Accordion Door Head Detail
1 1/2" = 1'-0"



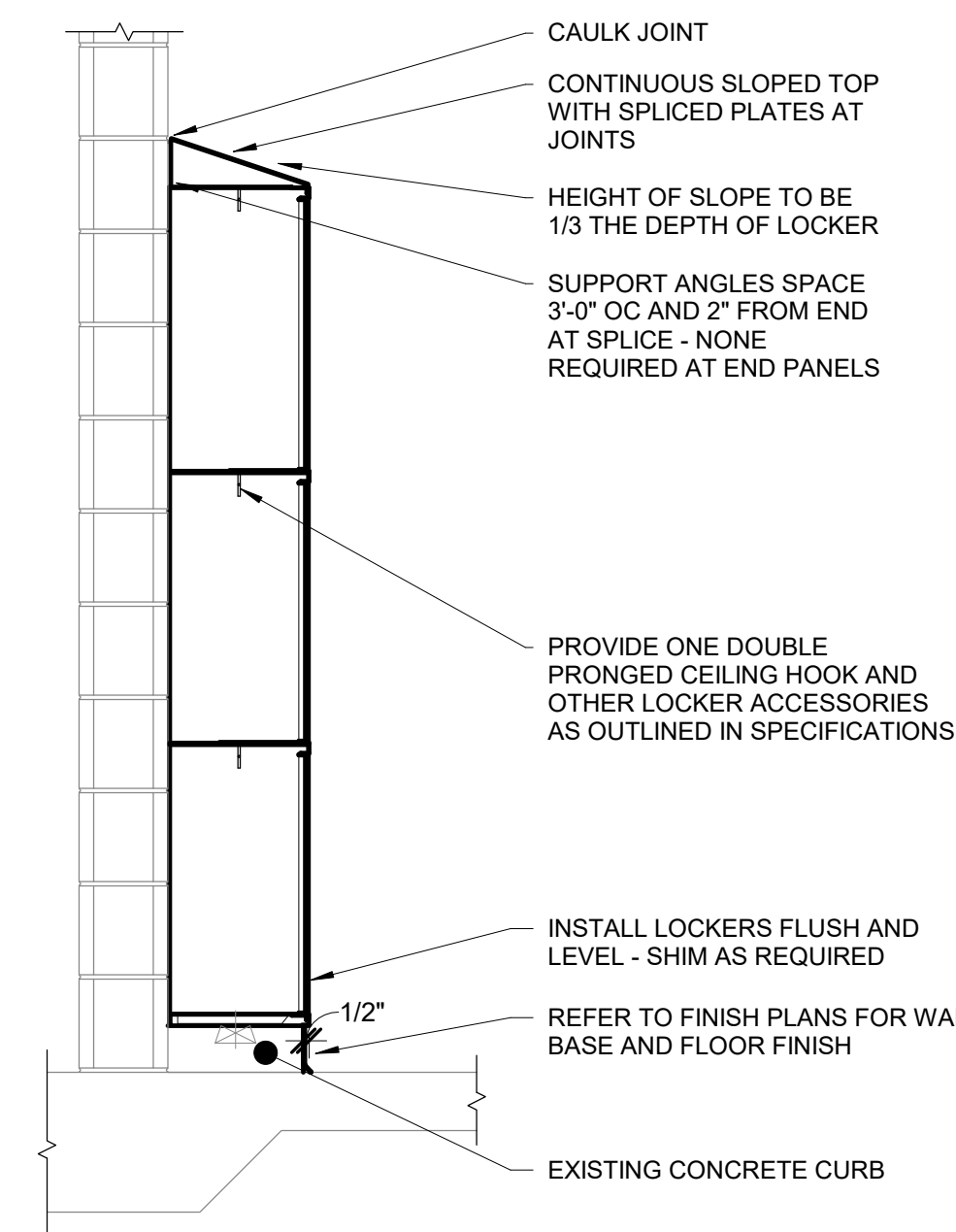
13 Accordion Door Jamb Detail
1 1/2" = 1'-0"



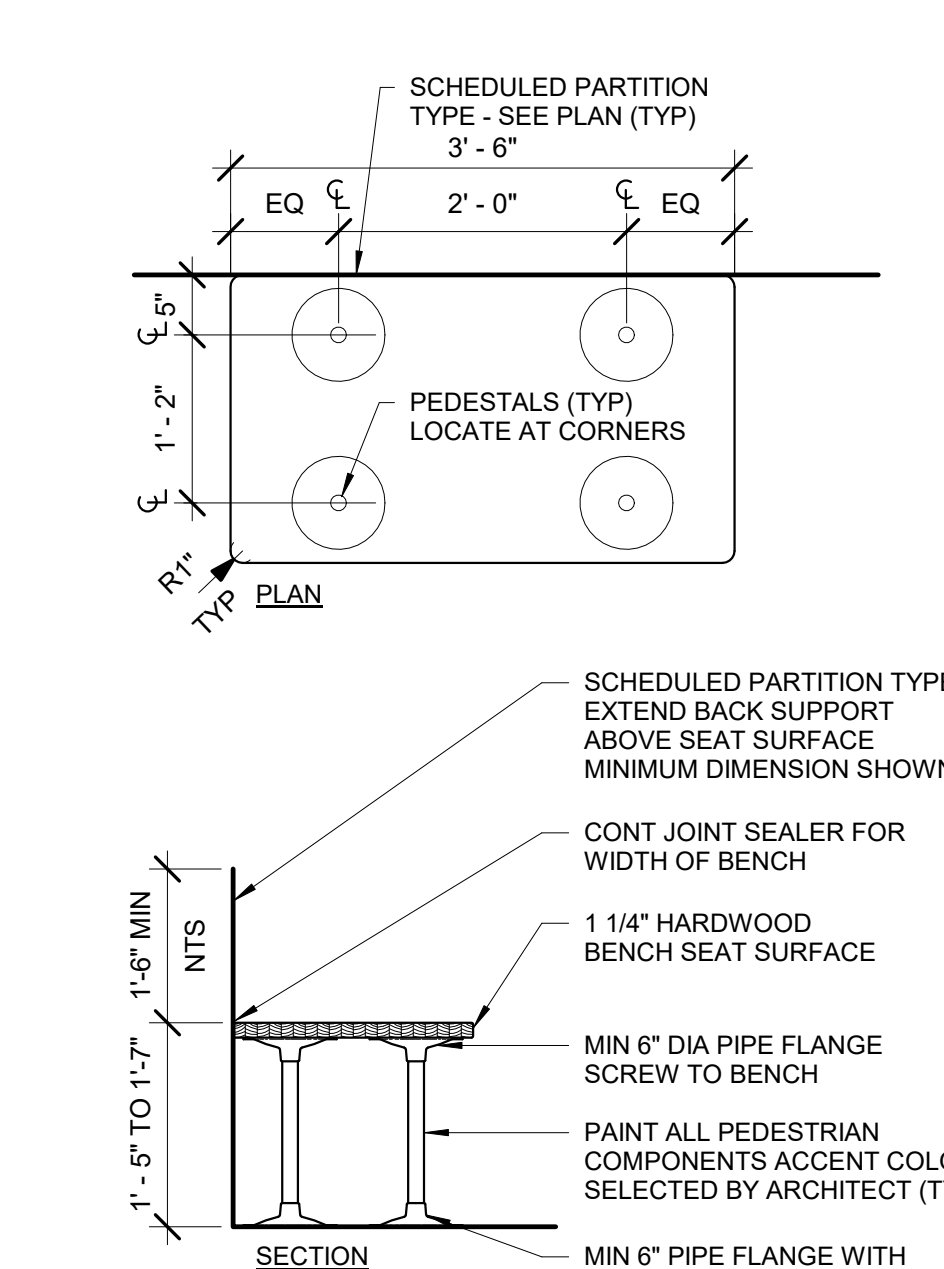
9 Threshold Detail
3" = 1'-0"



6 Athletic Triple Tiered Locker Detail with Slope Top
3/4" = 1'-0"



4 ADA Accessible Bench Detail
3/4" = 1'-0"



S.E.D. Control No. 62-18-01-06-0-002-015

Rev. No.: Date: Description:



complex world CLEAR SOLUTIONS

Tetra Tech Engineers, Architects & Landscape Architects, P.C.



Walkill Central School District
Walkill, New York

Reconstruction to:
John G. Borden Middle School

Door Schedule and Misc. Details

Drawn By: Author: Date: 06/30/2023 Drawing Number: 17597-22002 BA600