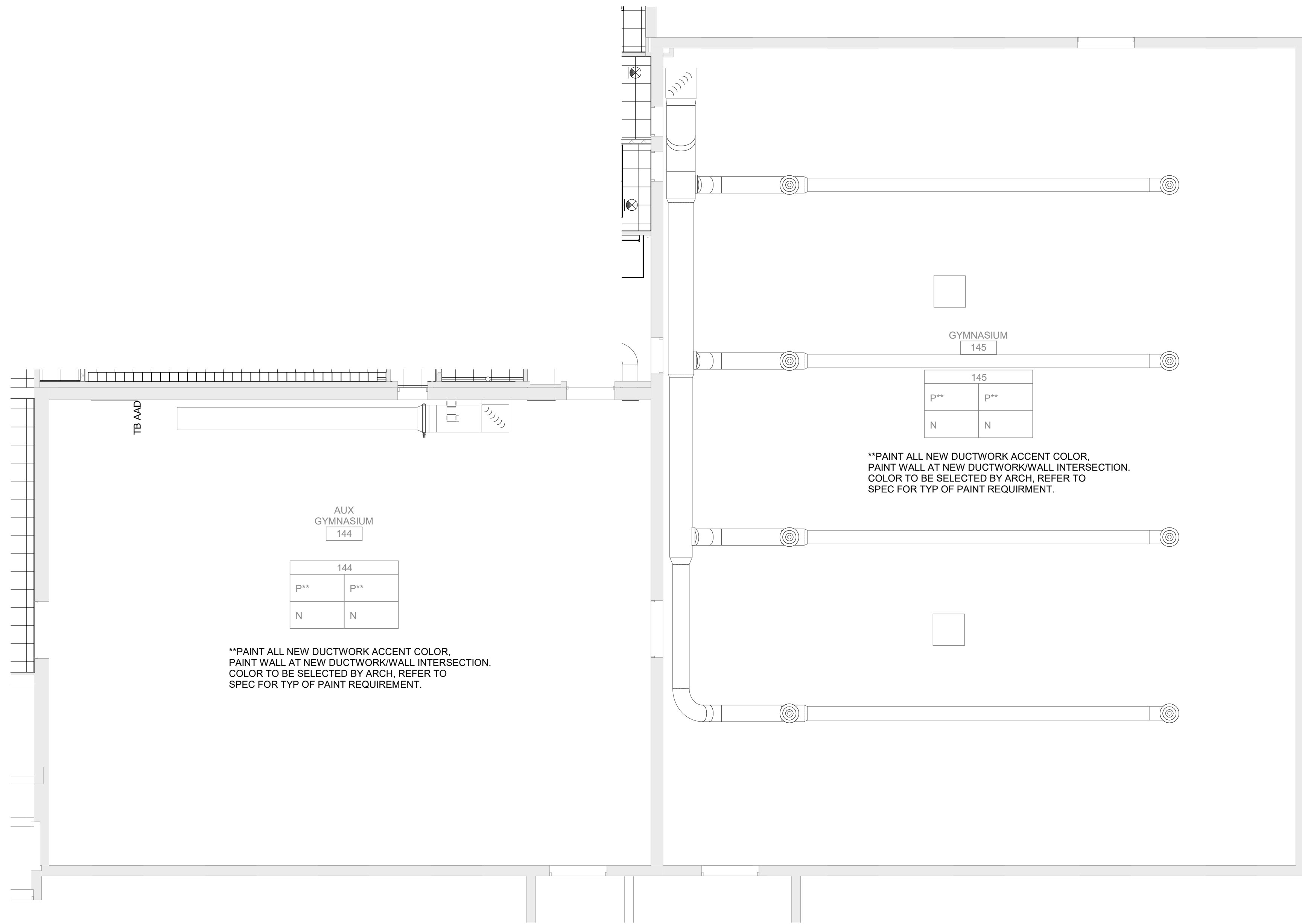
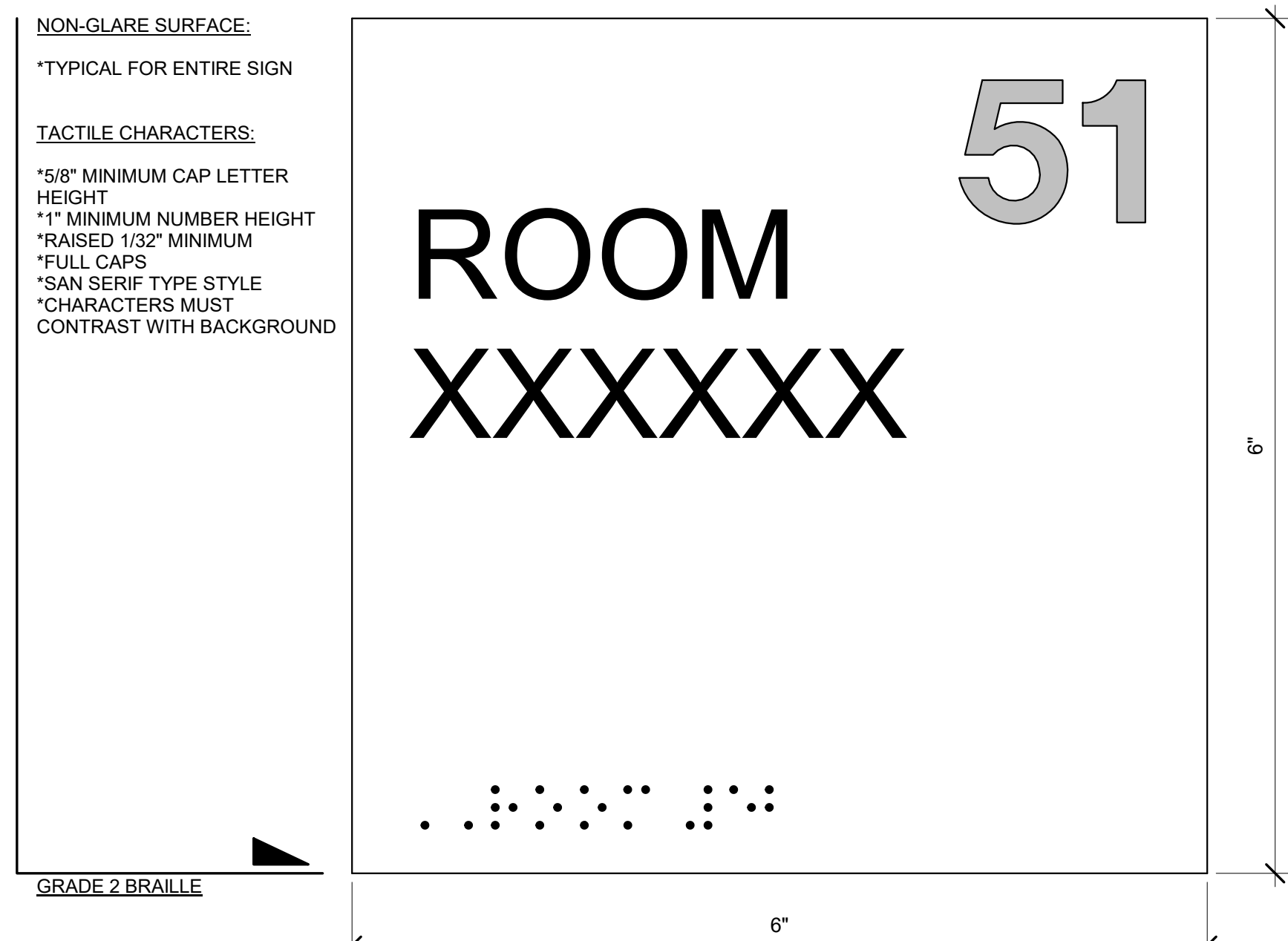


2 First Floor - Stage 156
1/8" = 1'-0"

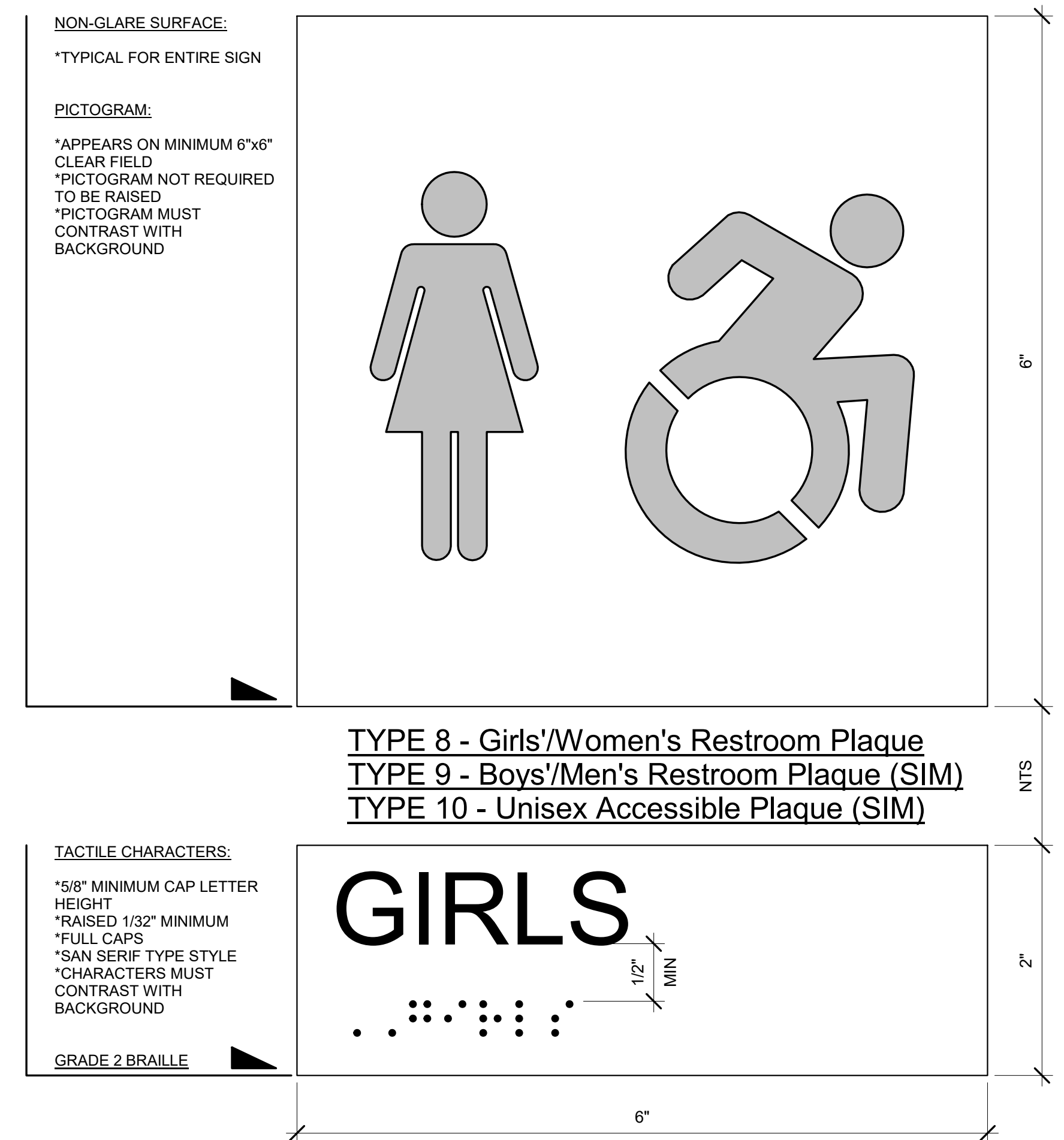


1 First Floor - Gym 144 and Gym 145
1/8" = 1'-0"

Note -Braille Dimensions, TYP. For all signs:
Dot diameter- 1.5mm- 1.6mm
Distance between Braille Dots 2.3mm - 2.5mm
Distance between corresponding Dots 6.1mm - 7.6mm
Dot height - 0.6mm - 0.9mm
Distance between corresponding dots (below) 10.mm-10.2mm

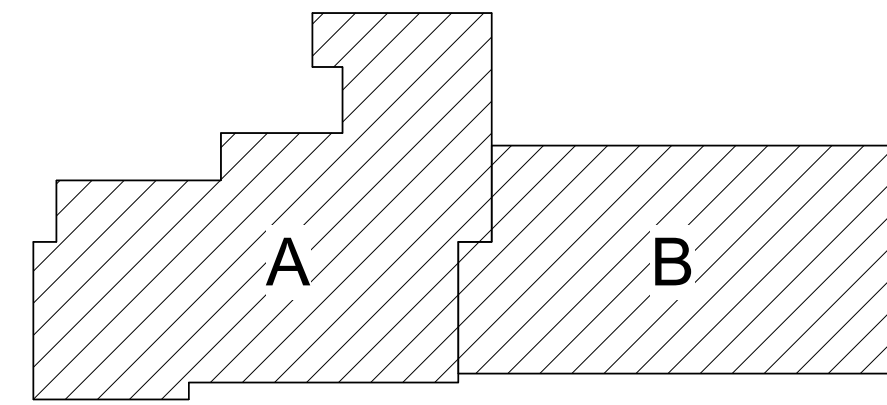


4 Typical Permanant Room Plaque
12" = 1'-0"



3 Restroom Plaque
12" = 1'-0"

REFER TO DRAWING BA900 FOR ROOM FINISH NOTES



Key Plan
N.T.S.

S.E.D. Control No. 62-18-01-06-0-002-015

Rev. No.	Date	Description



WALKKILL
CENTRAL SCHOOL DISTRICT

complex world
CLEAR SOLUTIONS

BID SET

Tetra Tech Engineers, Architects
& Landscape Architects, P.C.



TETRA TECH
ARCHITECTS & ENGINEERS

Walkkill Central School District
Walkkill, New York

Reconstruction to:
John G. Borden Middle School

Gym and Auditorium Ceiling Plans

Drawn By: Author	Date: 06/30/2023	Drawing Number:
Project No.: 17597-22002	BA901	