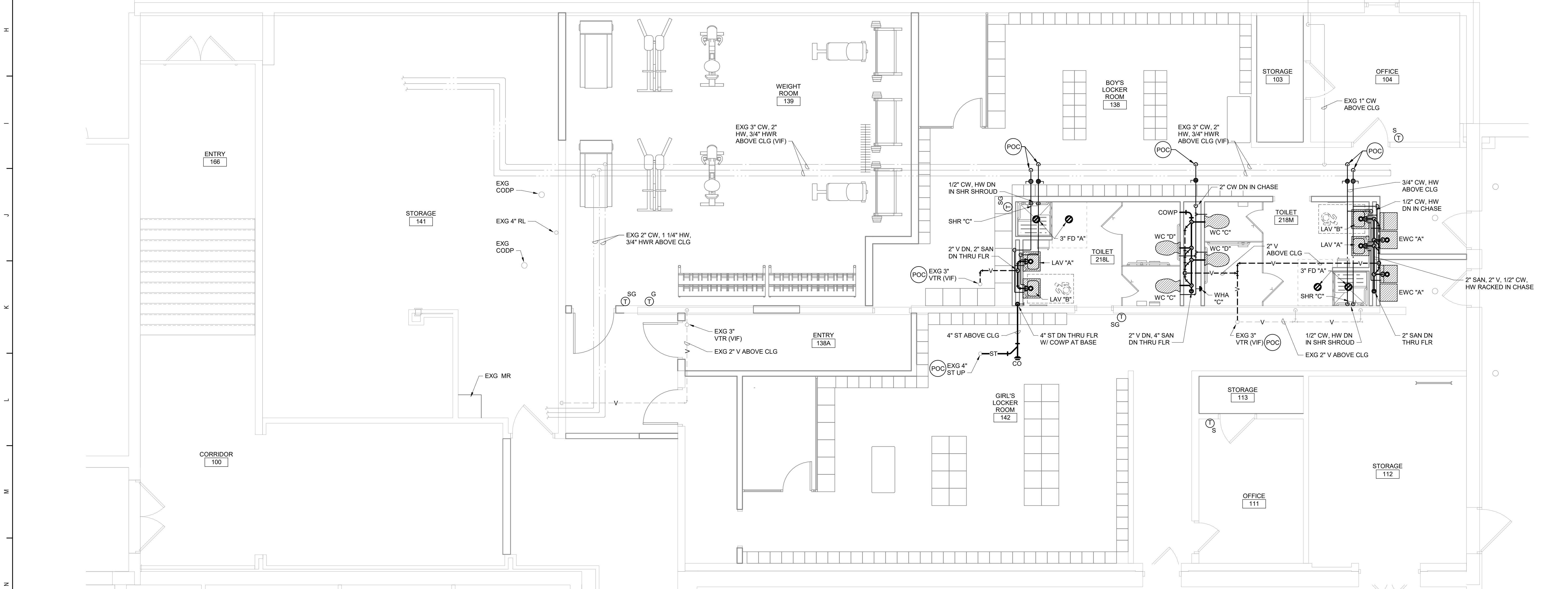


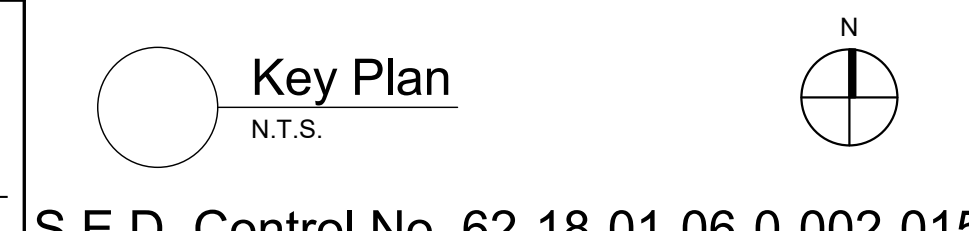
**1 Enlarged Locker Rooms Below Slab Plan**  
1/4" = 1'-0"  
NOTE: ALL PIPING SHOWN IS BURIED UNLESS OTHERWISE NOTED



**2 Enlarged Locker Rooms Plan**  
1/4" = 1'-0"

**Plan Notes**

A. REFER TO DRAWING NO. BP050 FOR GENERAL NOTES.



S.E.D. Control No. 62-18-01-06-0-002-015

Rev. No. | Date | Description

--	--	--

**WALKKILL CENTRAL SCHOOL DISTRICT**

complex world | CLEAR SOLUTIONS

Tetra Tech Engineers, Architects & Landscape Architects, P.C.

**BID SET**

**TETRA TECH ARCHITECTS & ENGINEERS**

Walkkill Central School District  
Walkkill, New York

Reconstruction to:  
John G. Borden Middle School

Locker Rooms Plan

Drawn By: BCL	Date: 06/30/2023	Drawing Number:
Project No.:	BP401	