

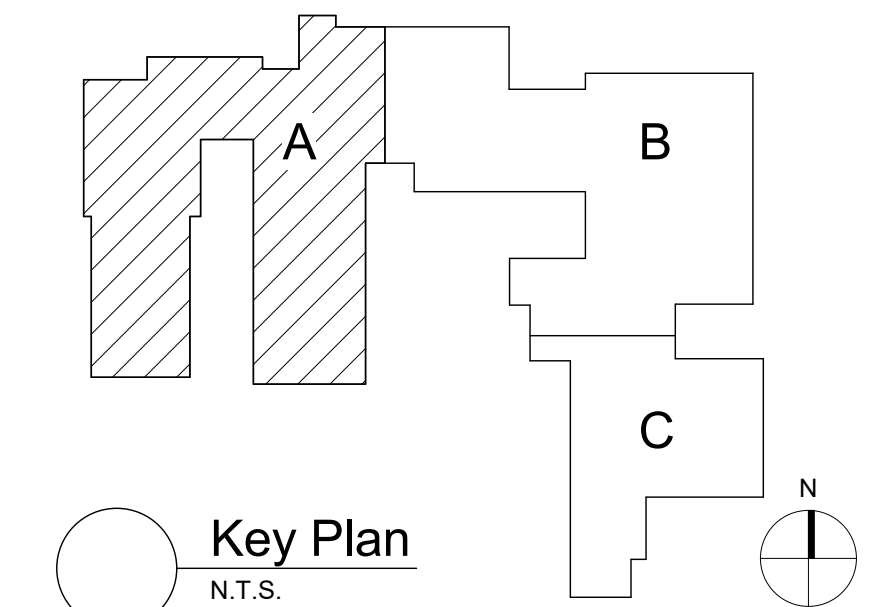
- General Plan Notes**
- A. WHERE EXISTING CONSTRUCTION IS DAMAGED OR DISTURBED, PATCH AS REQUIRED TO RESTORE SURFACES TO THEIR ORIGINAL CONDITION.
  - B. PARTITION TYPE TAGS APPLY TO ENTIRE LENGTH OF WALL INDICATED BY THAT TAG, REGARDLESS OF OPENINGS WITHIN THAT WALL, TYPICAL UNLESS NOTED OTHERWISE.
  - C. INFILL AREAS OF RECESSED FLOOR MAT AND/OR FINISH REMOVALS WITH REPAIR MATERIAL, PROVIDE SUBSTRATE LEVEL AS REQUIRED SO SCHEDULED FINISHED FLOOR WILL MATCH THAT OF EXISTING ADJACENT AREAS.

**Window Treatment Key**

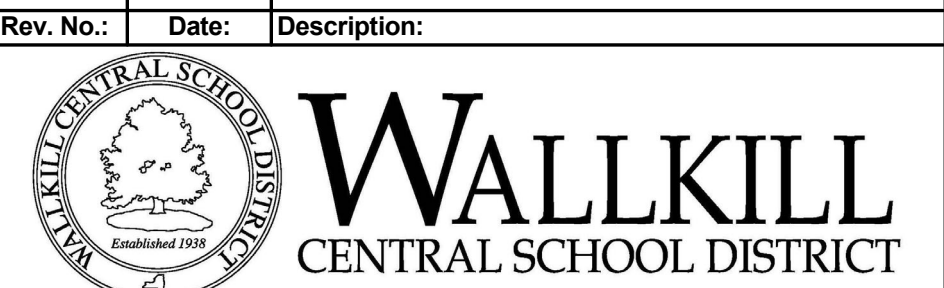
INDICATES AREAS OF VINYL COATED SHADES

**Window Treatment Notes**

SHADE SIZES SHALL BE FIELD VERIFIED AND COORDINATED WITH WINDOWS, INCLUDING ALL RESCUE WINDOW REQUIREMENTS. FIELD VERIFY FOR EXACT LOCATIONS, MOUNTING AND NUMBER AND SIZE OF EACH INDIVIDUAL WINDOW.



S.E.D. Control No. 62-18-01-06-0-005-017



complex world | CLEAR SOLUTIONS

Tetra Tech Engineers, Architects & Landscape Architects, P.C.



Walkkill Central School District  
Walkkill, New York

Reconstruction to:  
Plattekill Elementary School

First Floor Plan

Drawn By: TS/MHH Date: 06/30/2023 Drawing Number: 17597-22002  
Project No.: DA131