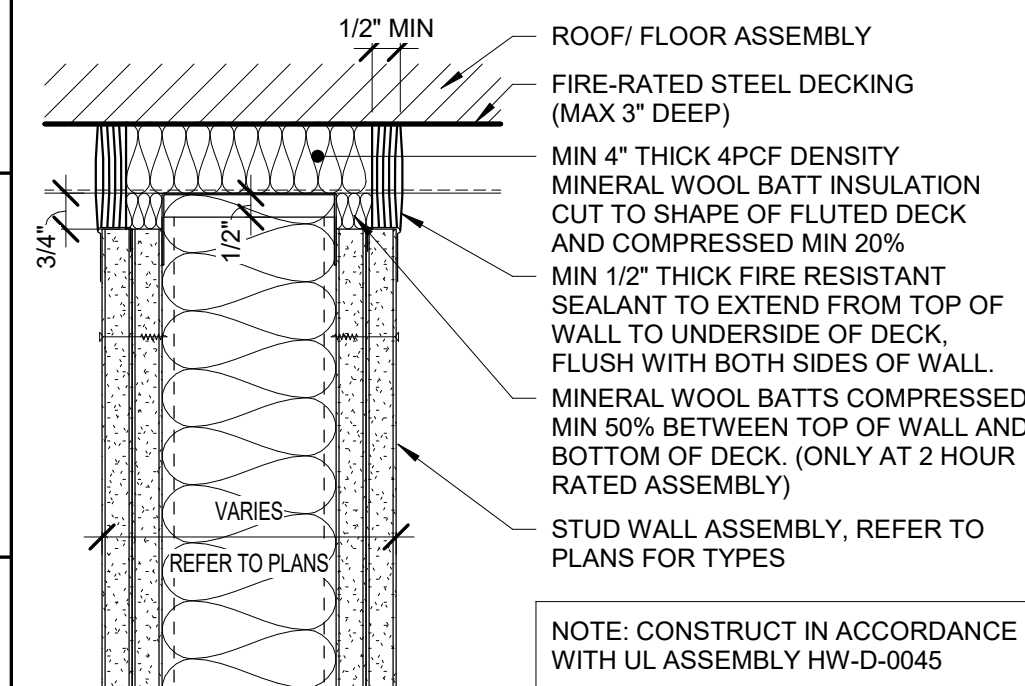
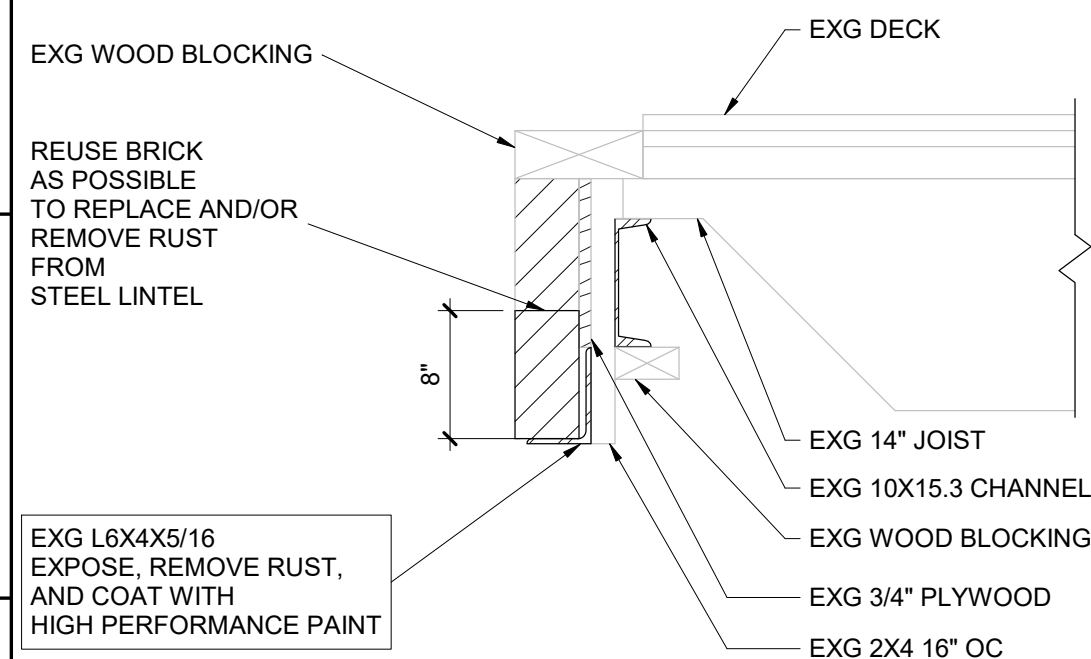


TYPE KEY	KEY LEGEND
P12.3, P12.4, AND P12.6 (NO RATING)	3 = 3-5/8\" MTL STUDS
P13.3 UL DESIGN #U465 (1 HOUR)	4 = 4\" MTL STUDS
P13.4 UL DESIGN #U465 (1 HOUR)	6 = 6\" MTL STUDS
P13.6 UL DESIGN #U465 (1 HOUR)	

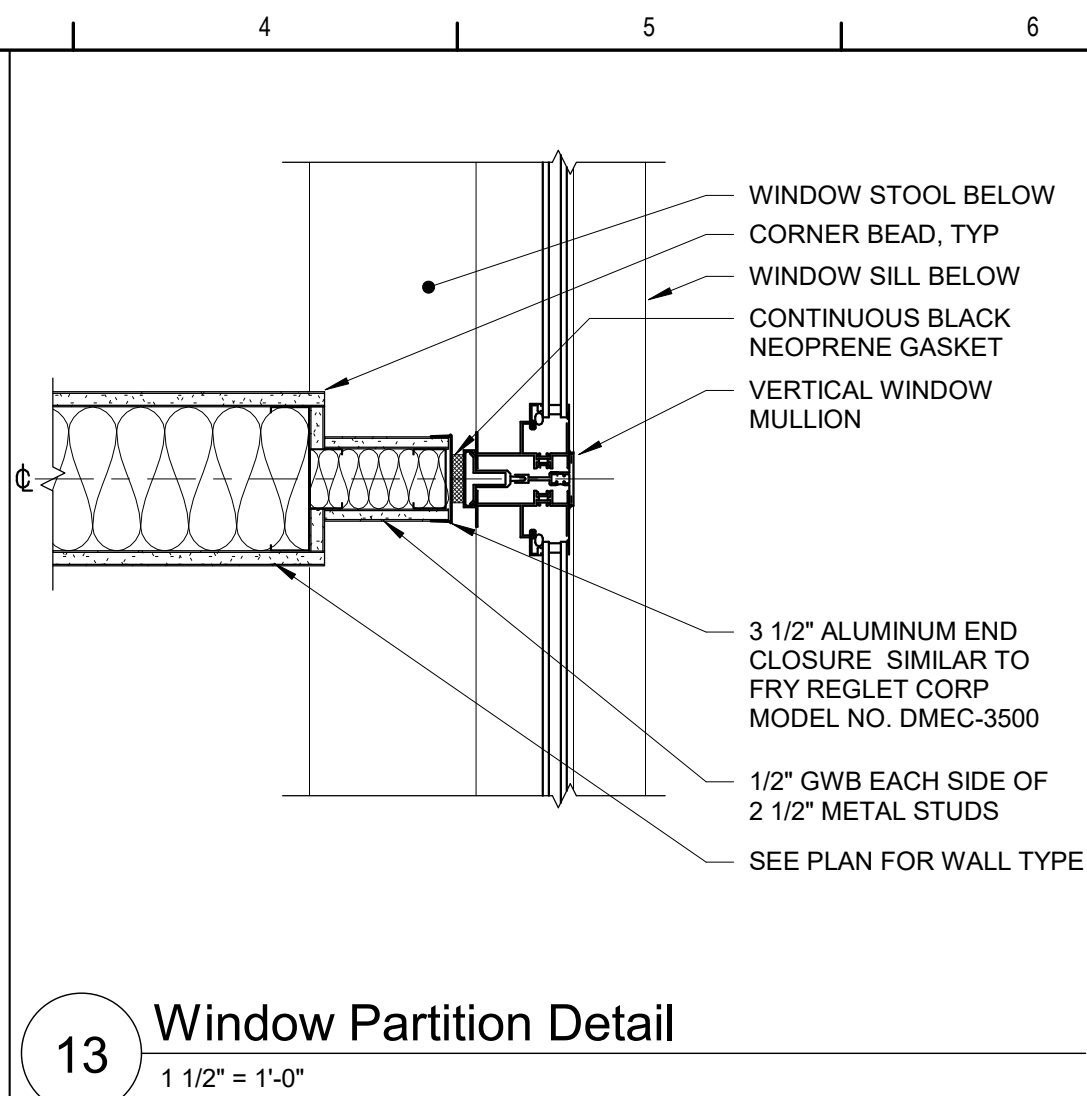
**17 Metal Stud Partition Type P12 and P13**  
1 1/2\" = 1'-0\"



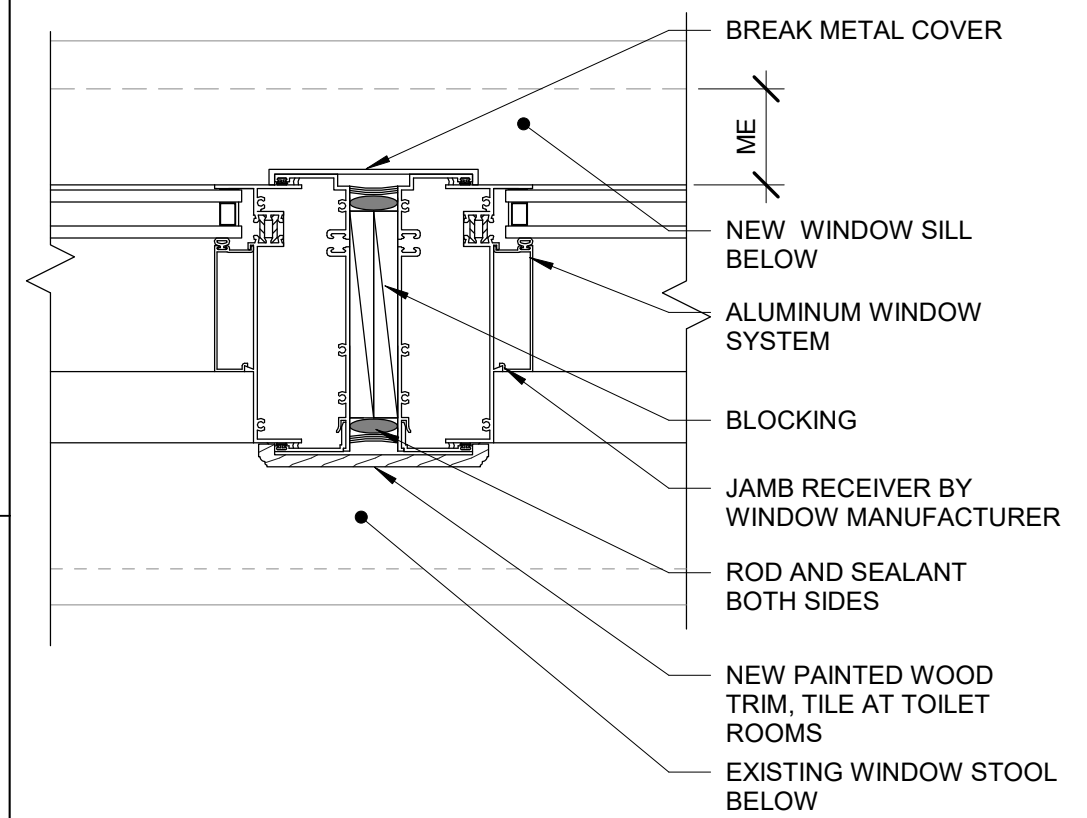
**18 Typical Top of Wall Assembly (Rated)**  
3\" = 1'-0\"



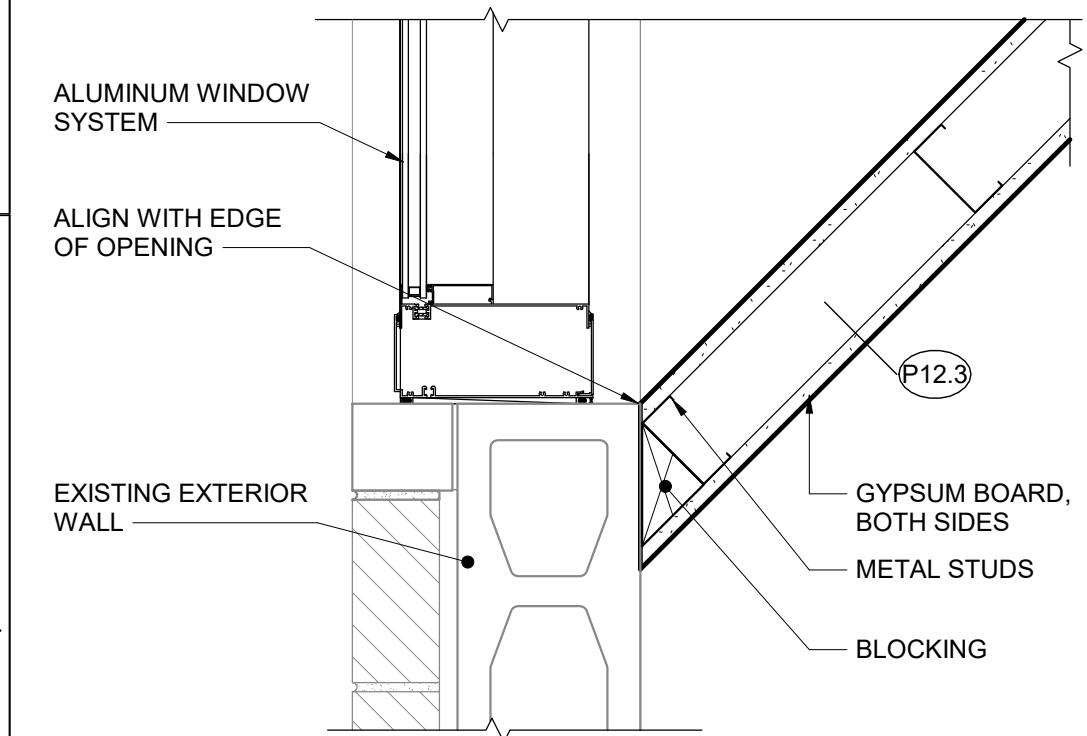
**19 Typical Window Lintel Replacement**  
1\" = 1'-0\"



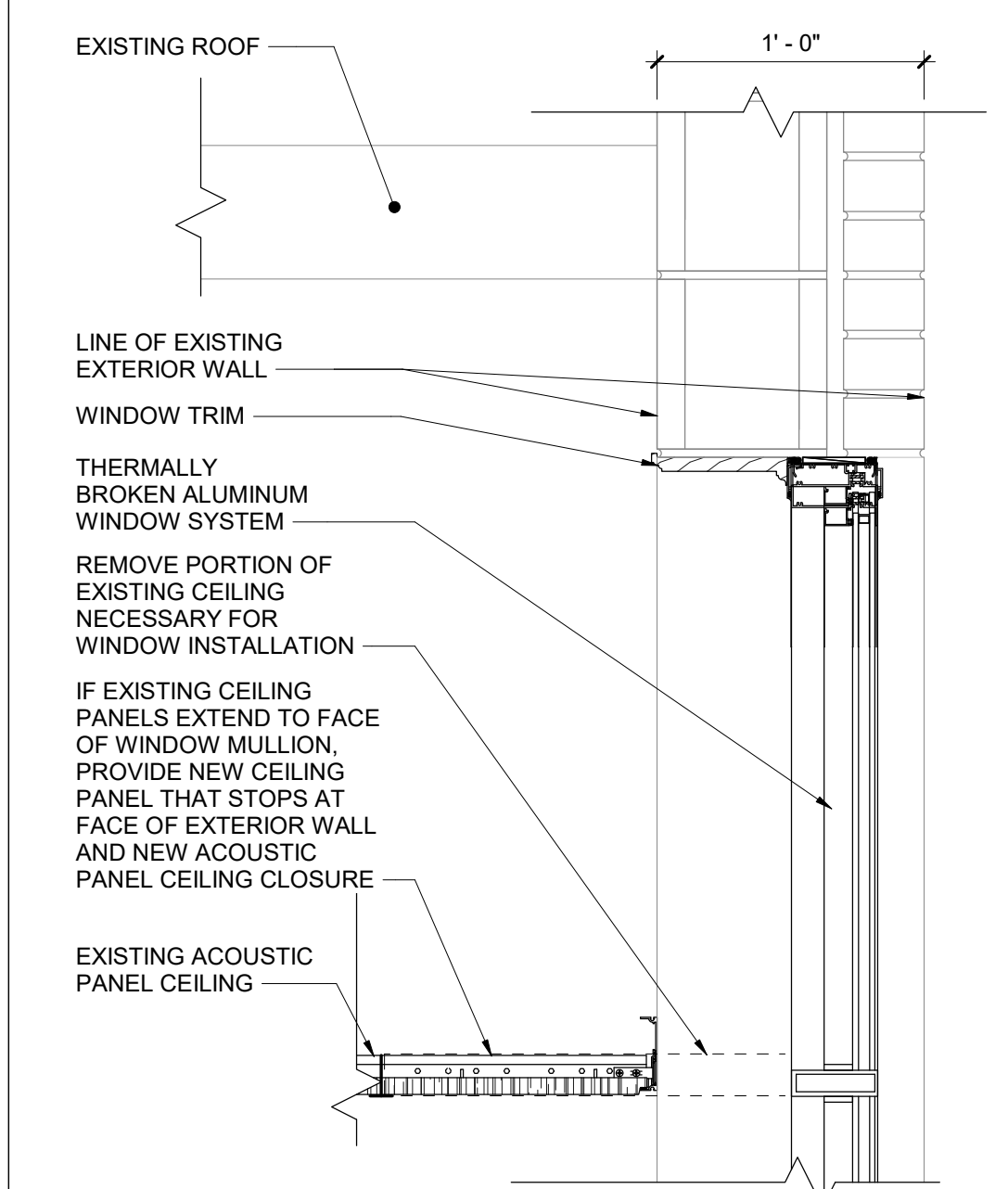
**13 Window Partition Detail**  
1 1/2\" = 1'-0\"



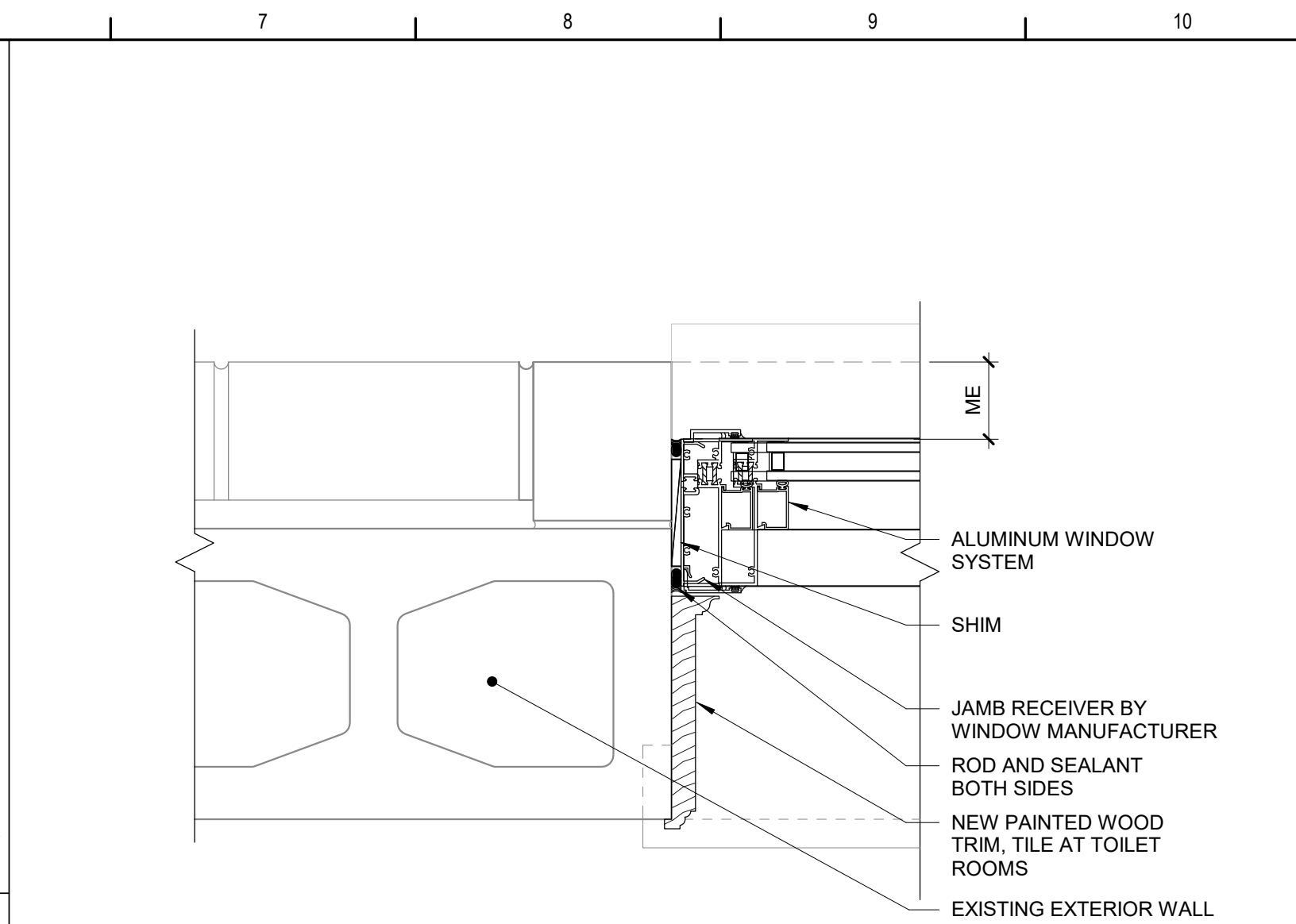
**14 Intermediate Mullion Detail**  
3\" = 1'-0\"



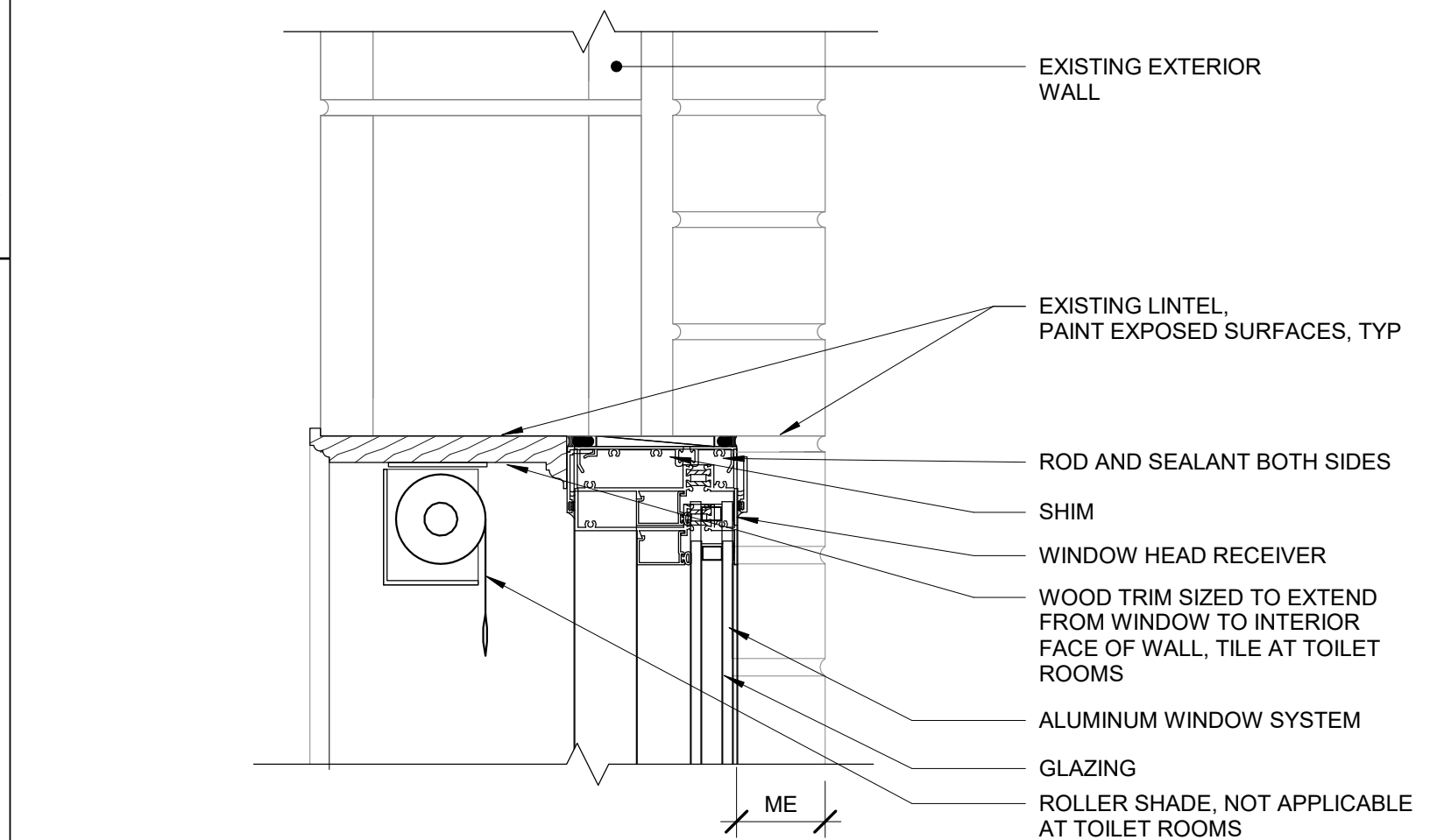
**15 Plan Detail at Angled Wall**  
1 1/2\" = 1'-0\"



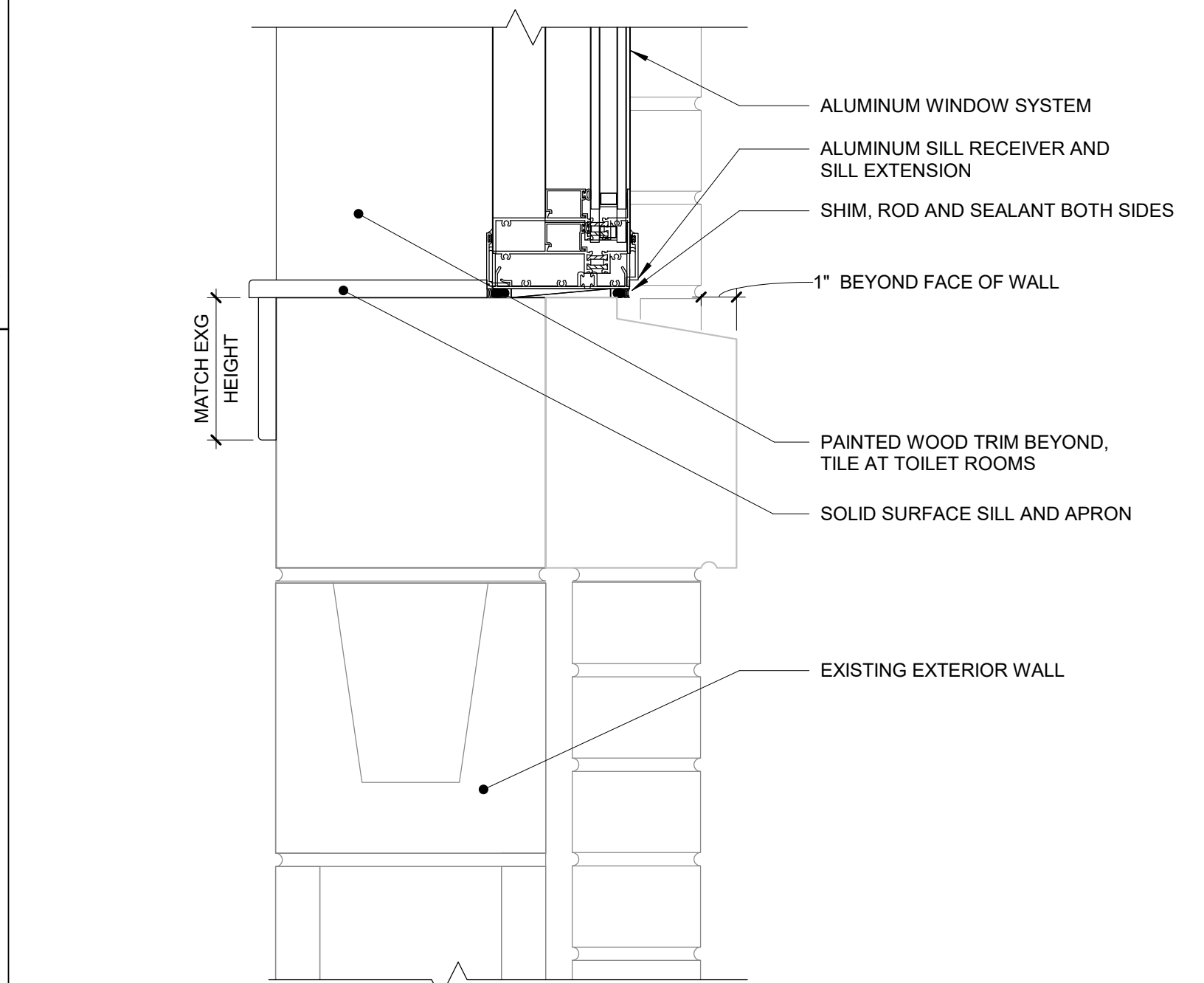
**16 Ceiling at Window Detail 2**  
1 1/2\" = 1'-0\"



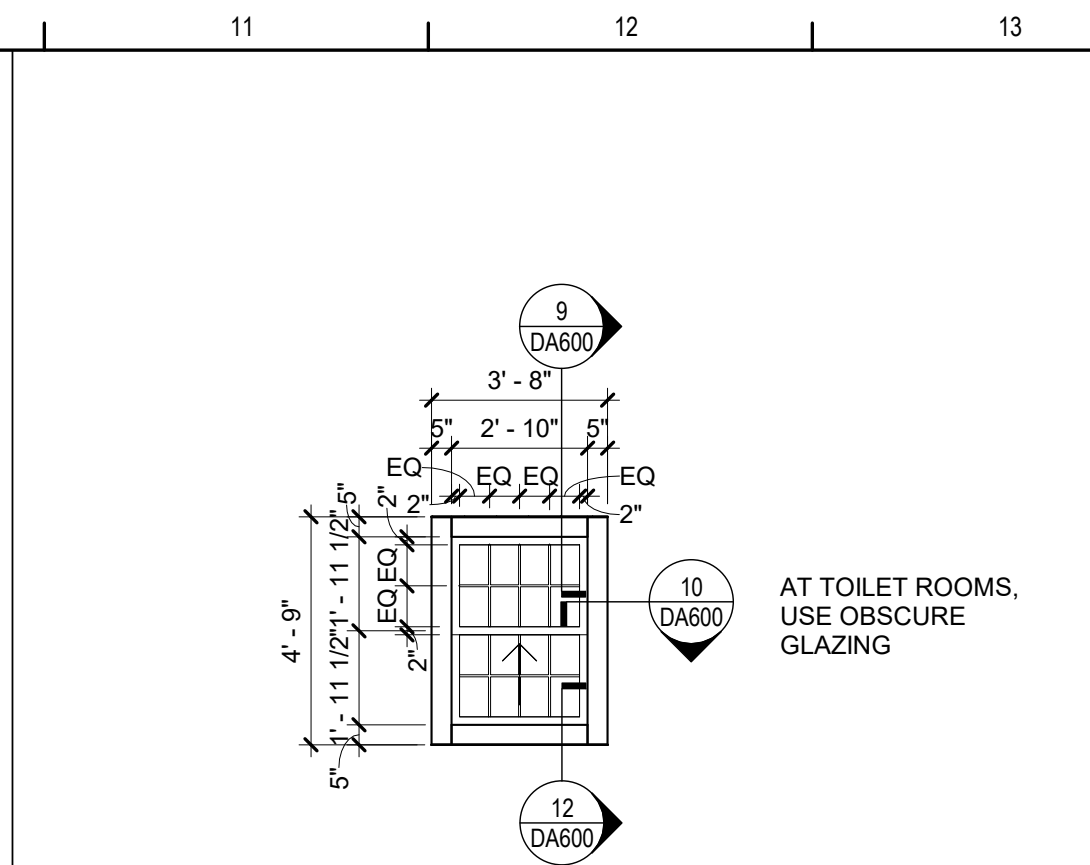
**10 Window Jamb Detail**  
3\" = 1'-0\"



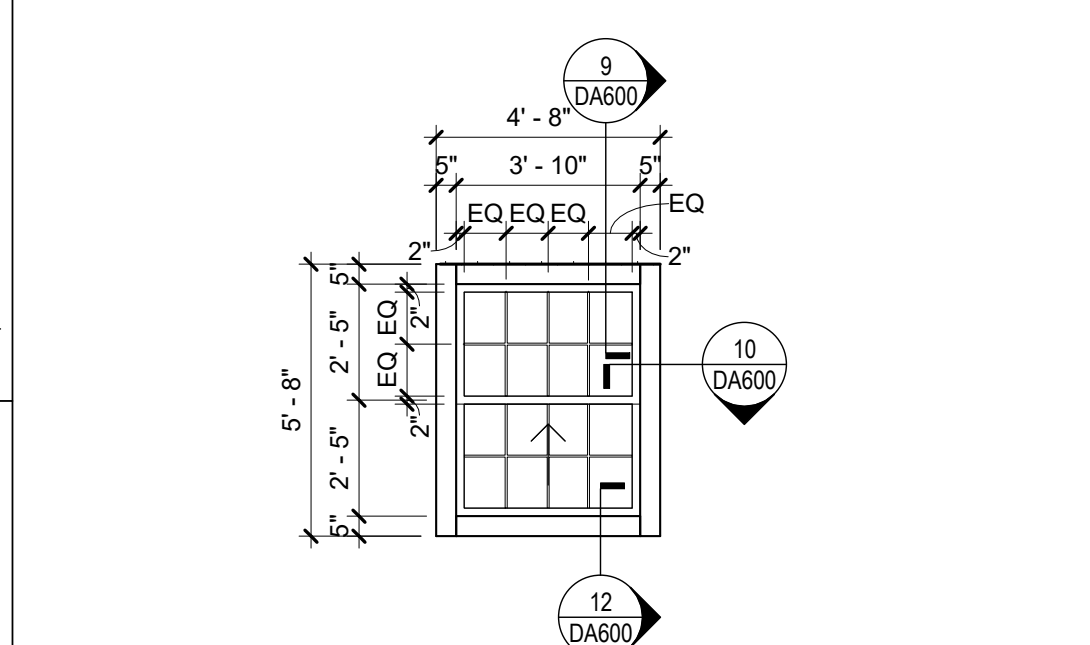
**11 Window Head Detail**  
3\" = 1'-0\"



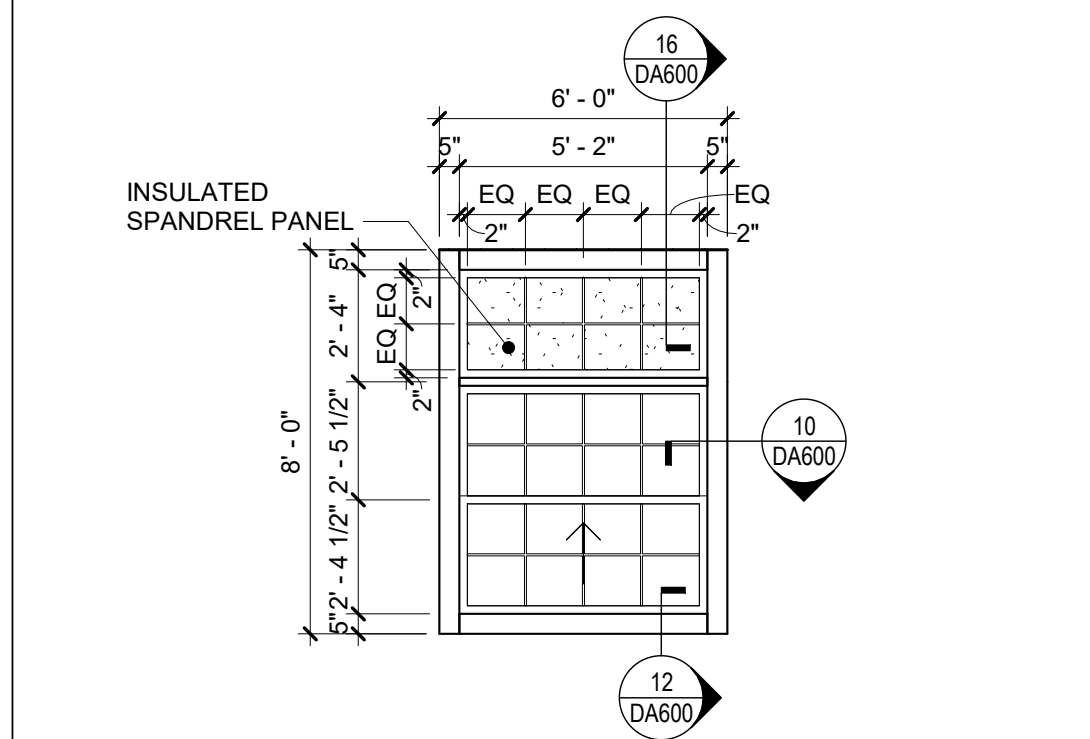
**12 Window Sill Detail**  
3\" = 1'-0\"



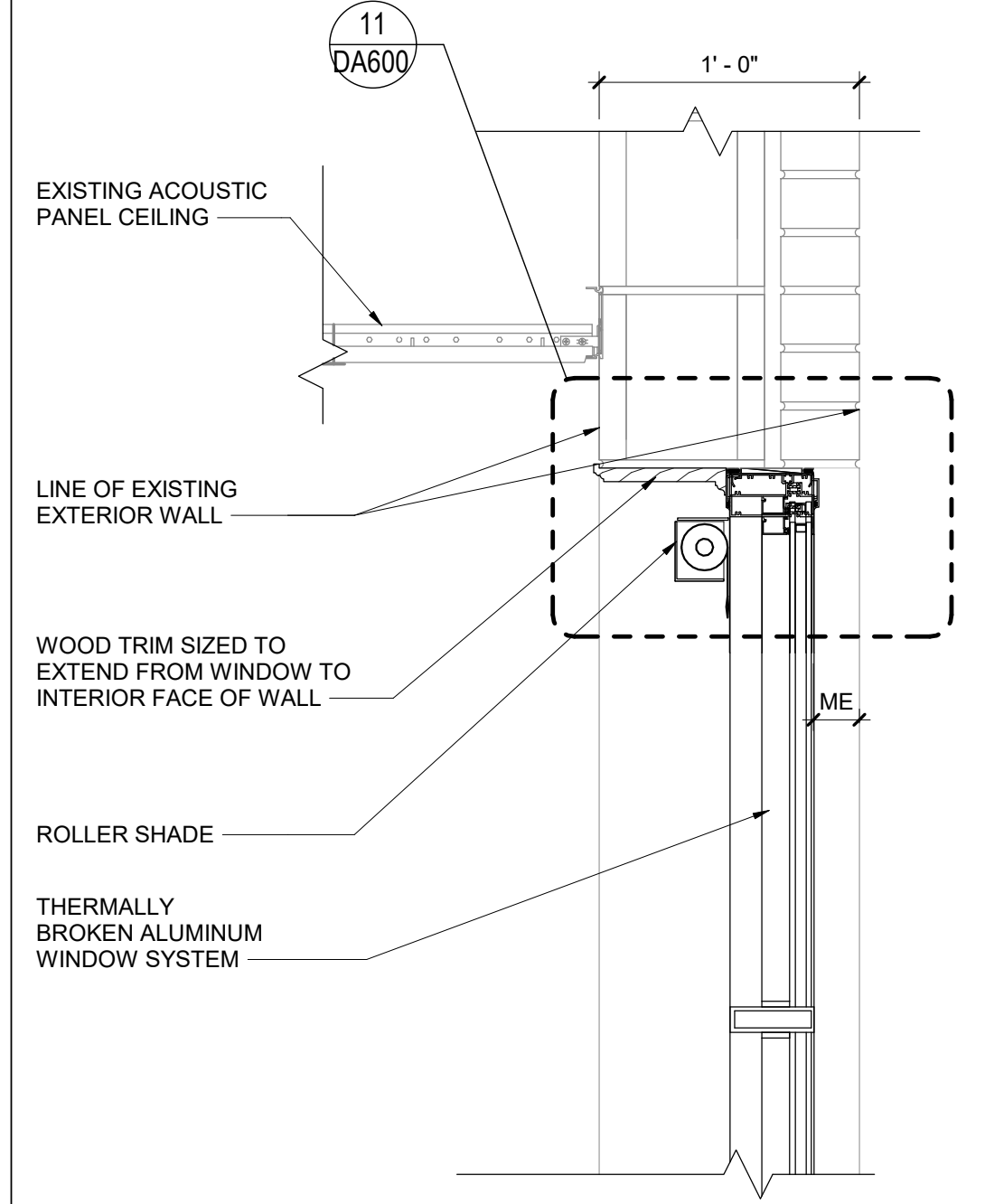
**6 WINDOW W6**  
1/4\" = 1'-0\"



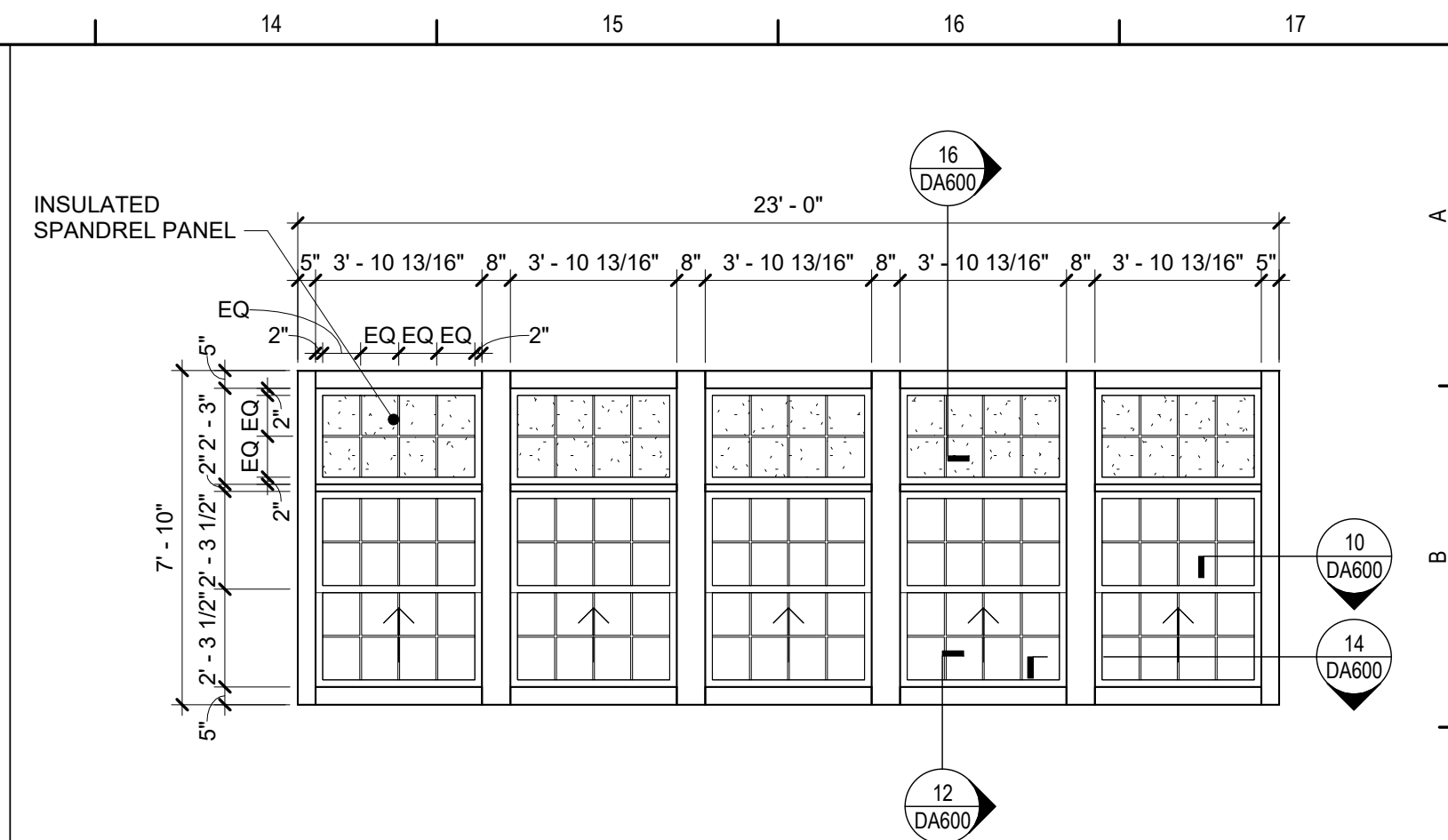
**7 WINDOW W7**  
1/4\" = 1'-0\"



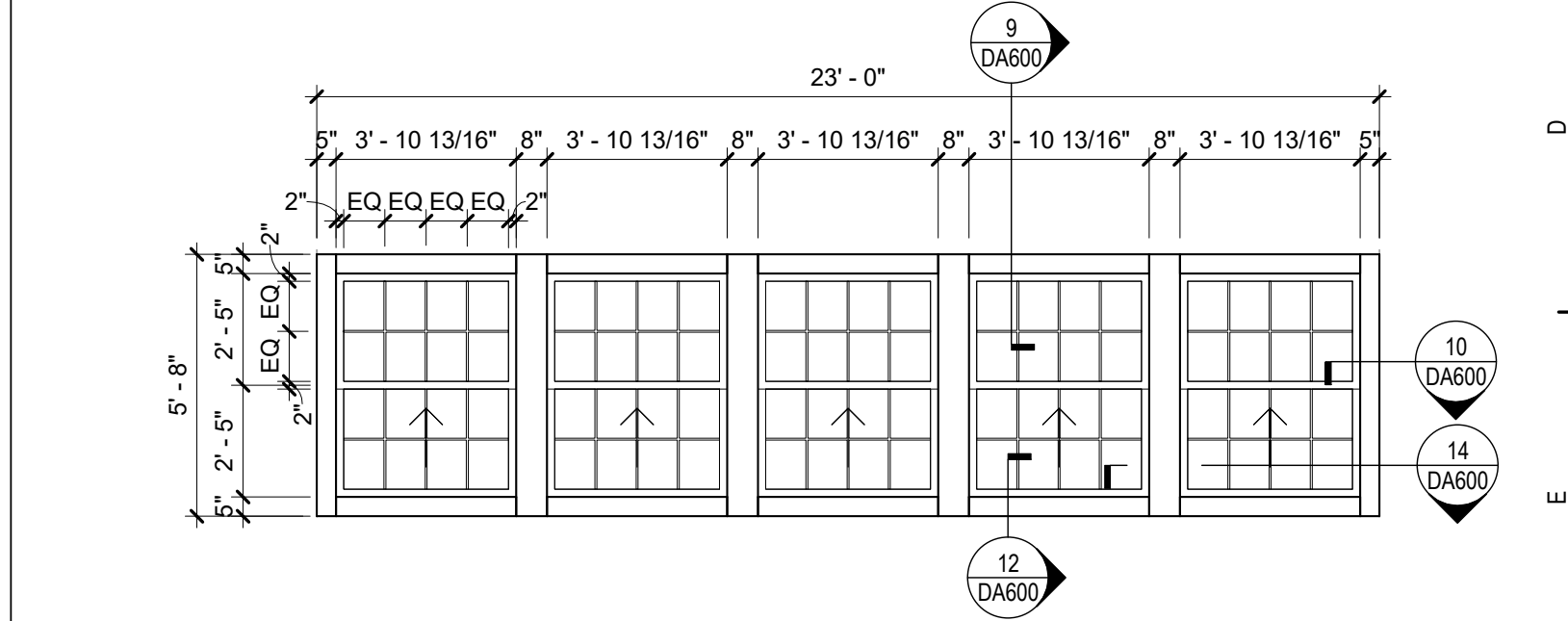
**8 WINDOW W8**  
1/4\" = 1'-0\"



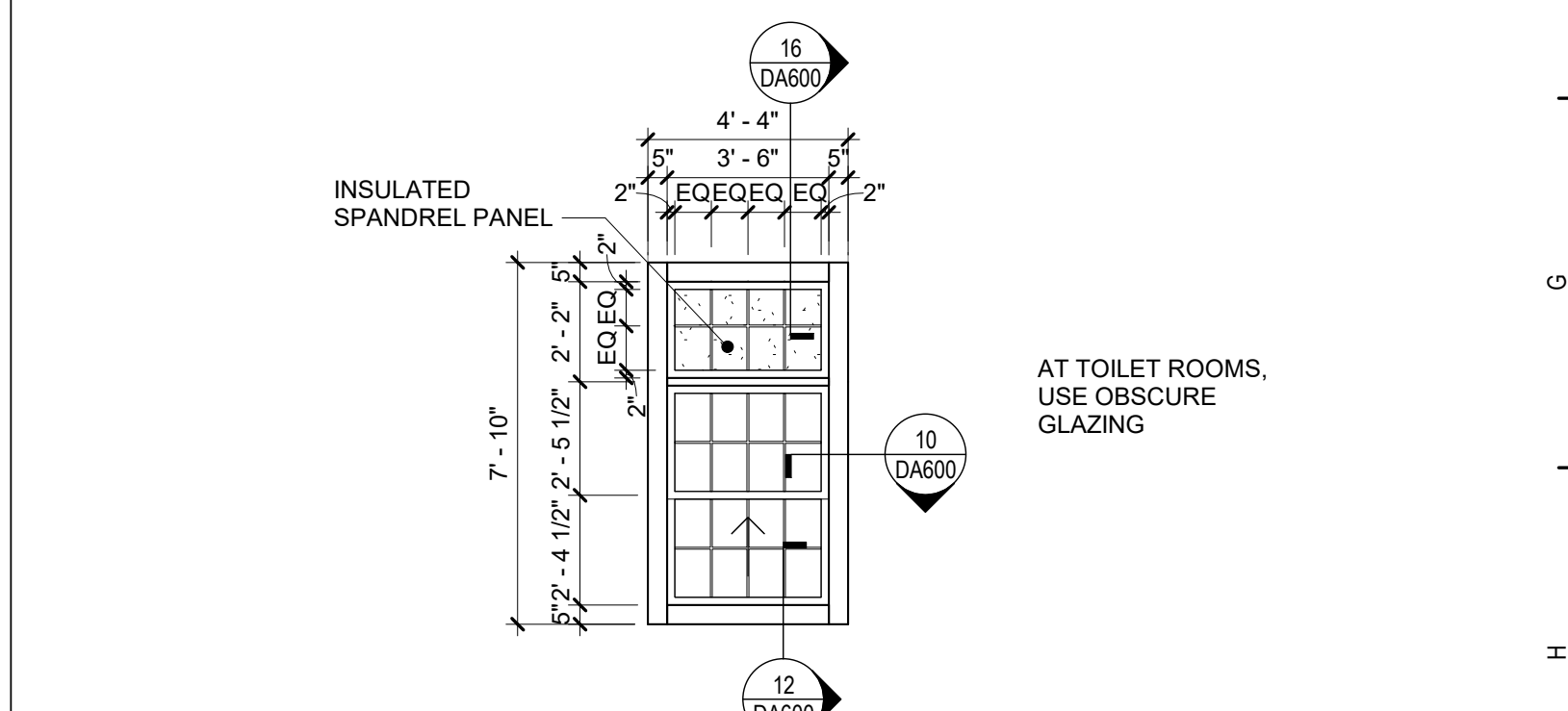
**9 Ceiling at Window Detail 1**  
1 1/2\" = 1'-0\"



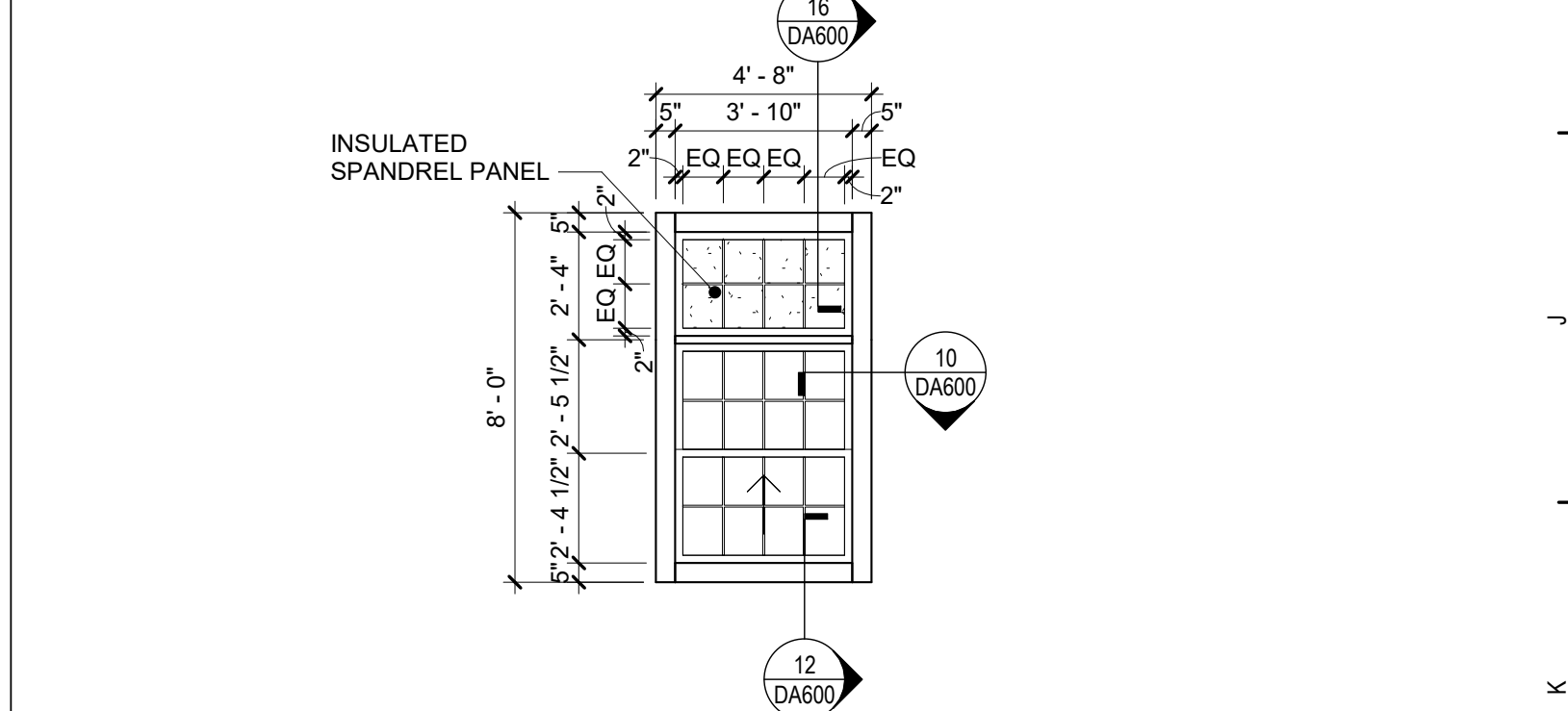
**1 WINDOW W1**  
1/4\" = 1'-0\"



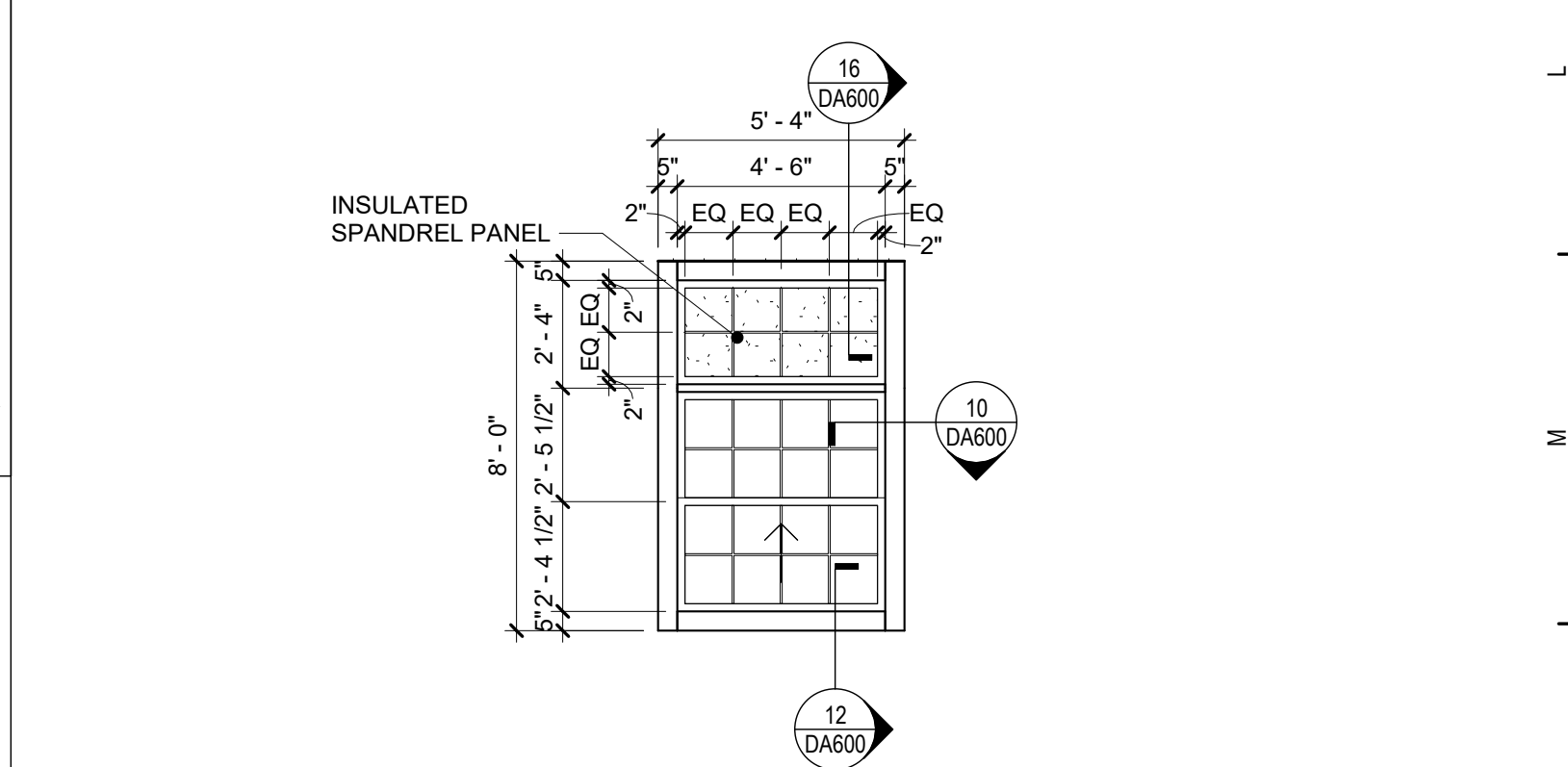
**2 WINDOW W2**  
1/4\" = 1'-0\"



**3 WINDOW W3**  
1/4\" = 1'-0\"



**4 WINDOW W4**  
1/4\" = 1'-0\"



**5 WINDOW W5**  
1/4\" = 1'-0\"

## General Window Notes

- INSULATING GLASS UNITS SHALL BE TYPE FCE/SCL, TYP UNO.
- RESCUE WINDOWS ARE INDICATED BY THE DESIGNATION \"RW\". SEE DG351 FOR LOCATIONS.
- PROVIDE ALL ALUMINUM FLASHINGS, RECEIVERS, TRIM AND SILLS REQUIRED FOR A COMPLETE AND FINISHED INSTALLATION REGARDLESS OF IF SHOWN ON DRAWINGS.
- REFER TO WINDOW TREATMENTS AS SHOWN ON DRAWINGS.
- GLAZING SYSTEMS FRAME TYPE KEY:  
W ALUMINUM WINDOW
- PROVIDE INTERNAL STEEL REINFORCEMENT TO WINDOW, STOREFRONT AND CURTAIN WALL SYSTEMS AS REQUIRED TO COMPLY WITH WIND LOADING OR OTHER DESIGN CRITERIA, OR AS RECOMMENDED BY MANUFACTURER.
- ALUMINUM WINDOW, STOREFRONT AND CURTAIN WALL FRAME EXTRUSIONS ARE INTENDED AS GENERIC GRAPHIC REPRESENTATIONS ONLY.
- EXISTING WOOD TRIM TO REMAIN AROUND WINDOWS. PROTECT DURING WINDOW REMOVALS.

S.E.D. Control No. 62-18-01-06-0-005-017

Rev. No.: Date: Description:



complex world  
CLEAR SOLUTIONS

Tetra Tech Engineers, Architects  
& Landscape Architects, P.C.



Walkkill Central School District  
Walkill, New York

Reconstruction to:  
Plattekill Elementary School

Window Types and Details

Drawn By: Author	Date: 06/30/2023	Drawing Number:
Project No.: 17597-22002	DA600	