

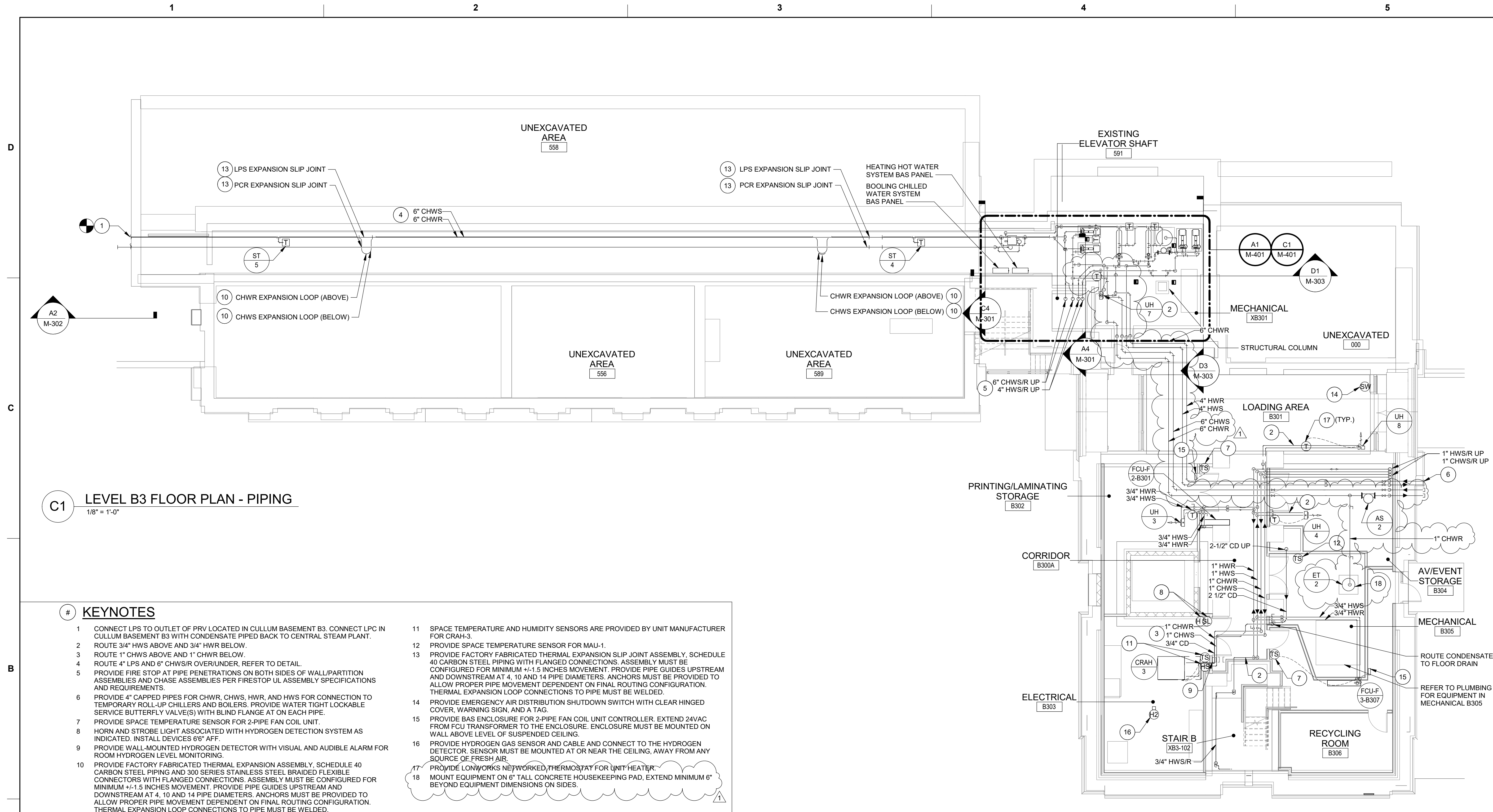
[illegible][illegible]

BUILDINGS 605/607 RENOVATION - LINCOLN HALL

LEVEL B3 FLOOR PLAN - PIPING

SHEET ID

MP101



GENERAL NOTES

1. REFER TO M-001 AND M-002 FOR GENERAL NOTES, LEGEND, ABBREVIATIONS, AND SYMBOLS.
2. PROVIDE FIRE-STOPPING AT FIRE-RATED PENETRATIONS.
3. PROVIDE DRIP PAN FOR PIPING RUNNING IN ELECTRICAL AND TELECOM ROOMS WITH WATER LEAK DETECTOR AND CABLE. INSTALL CABLE IN TRAY IN SERPENTINE PATTERN.
4. LOCATE PIPING IN OR AT CEILING UNLESS OTHERWISE INDICATED. BRANCH RUNOUTS TO TERMINAL EQUIPMENT MUST BE MINIMUM 3/4 INCH UNLESS NOTED OTHERWISE.
5. PROVIDE PIPING ISOLATION VALVES IN ACCESSIBLE LOCATIONS, AS CLOSE TO MAIN RISERS AND BRANCH TAKE-OFFS AS POSSIBLE.
6. CONNECTED PIPING SYSTEMS MUST NOT IMPART ANY WEIGHT TO EQUIPMENT ITSELF, AND VICE VERSA.
7. MAINTAIN EQUIPMENT ACCESS CLEARANCES FOR ELECTRICAL, MAINTENANCE, REPAIRS, MOTOR REPLACEMENT, ETC. ON SIDES.
8. PROVIDE DUCTED FCUs WITH BOTTOM ACCESS FOR FILTER CHANGES AND MAINTENANCE ACCESS. COORDINATED REQUIRED LEFT HAND/RIGHT HAND SIDE FCU PIPING CONNECTIONS TO MAINTAIN ACCESS.
9. PROVIDE FIRE STOP AT PIPE PENETRATIONS ON BOTH SIDES OF WALL/PARTITION ASSEMBLIES AND CHASE ASSEMBLIES PER FIRESTOP UL ASSEMBLY SPECIFICATIONS AND REQUIREMENTS.

