

Belt Drive Upblast Centrifugal Wall Exhaust Fan

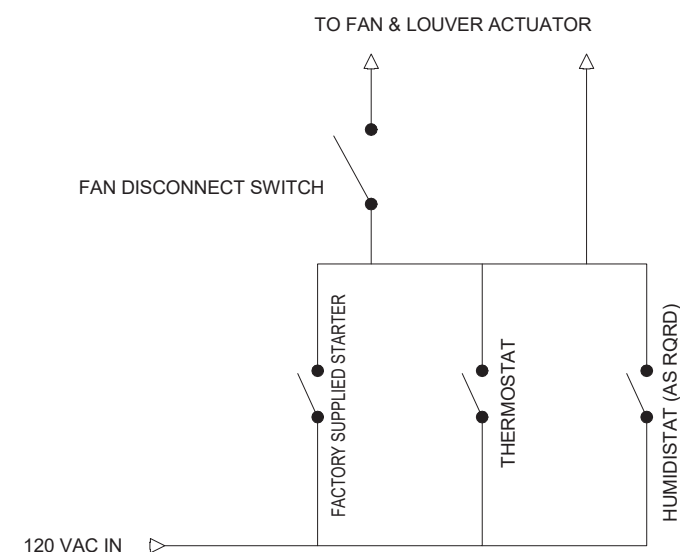
MARK INFORMATION		FAN INFORMATION							MOTOR INFORMATION					
QTY	MARK	MODEL	VOLUME (CFM)	TOTAL EXTERNAL SP (IN WG)	FAN RPM	OPERATING POWER (HP)	WEIGHT (LB.)	SIZE (HP)	V/C/P	ENCLOSURE	MOTORRPM	WINDINGS	NEC FLA*	SONES
1	EF1	CUBE-300-7	5,300	0.29	415	0.54	216	0.75	460/60/3	TF	1725	1	1.6	7.3

*NEC FLA - Based on table [430.250](#) or [430.248](#) of National Electrical Code 2020. Actual motor FLA may vary for sizing thermal overload, consult factory"

EF1 : SELECTED OPTIONS AND ACCESSORIES
Standard Curb Cap Size - 40 Square
Sidewall Mounting - Fan Configured for Wall-Mounted Applications
Curb will be Through Wall, 6 in. Wall Thickness
UL/cUL 705 Listed - "Power Ventilators"
Switch, NEMA-1, Toggle,
Foam Curb Seal (Factory Applied)
Damper Shipped Loose, WD-330-PB-34X34, Gravity Operated, Coated, Nominal Size
Coated with Permatecor, Concrete Gray-RAL 7023, Fan And Attached Acc
Hood Hasps
Stainless Steel Fasteners - 300 Series
Stainless Steel Shaft - 300 Series
Wiring Pigtail, Internal, General, 9 ft from Unit of Flexible Metal Conduit
Birdscreen: Stainless Steel, nom. 69% Free Area
Bearings with Grease Fittings, L10 life of 100,000 hrs (L50 avg. life 500,000 hrs)
Conduit Chase Qty 1

HVAC NOTES:

1. EXHAUST FANS AND LOUVERS SHALL BE GREENHECK OR APPROVED EQUAL
2. HYDRONIC HEATERS SHALL BE MODINE.
3. ALL EQUIPMENT INSTALLATION SHALL BE IN ACCORDANCE WITH THE MANUFACTURER'S RECOMMENDATIONS.
4. EXHAUST FANS SHALL HAVE HONEYWELL T6051A1016U COOLING THERMOSTATS AS SHOWN. HONEYWELL H4661166 LINE VOLTAGE HUMIDISTATS SHALL BE INSTALLED WHERE SHOWN. SINGLE POLE SWITCHES W/PILOT LIGHT (EXP AS REQUIRED) SHALL PROVIDE MANUAL OVERRIDE WHERE SHOWN. THE FAN SHALL RUN ON CLOSED CONTACTS IN ANY CONTROL. GREENHECK CAPS FILE WILL BE PROVIDED UPON REQUEST.
5. ALL HEATERS SHALL HAVE HONEYWELL T4 PRO TH4110U2005 PROGRAMMABLE THERMOSTATS. AQUASTATS SHALL PROVIDE FAN CONTROL FOR UNIT HEATERS.
6. ALL HYDRONIC PIPING SHALL BE TYPE L COPPER W/1" FIBERGLASS INSULATION INSTALLED AS A REVERSE RETURN SYSTEM.
4. THE WEIGHT OF THE UNIT HEATERS, FANS AND OTHER HVAC EQUIPMENT SHALL BE VERIFIED BEFORE PURCHASE AND THE APPROPRIATE HANGERS AND SUPPORTS WILL BE CONFIRMED AND PROVIDED BY THE CONTRACTOR. THE CONTRACTOR IS RESPONSIBLE FOR DETERMINING AND PROVIDING ALL NECESSARY SUPPORTS, BRACES, PADS, CONNECTIONS, ETC. TO MAKE THE UNIT FULLY FUNCTIONAL AND OPERATIONAL IN ACCORDANCE WITH THE MANUFACTURER'S INSTRUCTIONS.
5. THE DRAWINGS SHOW THE GENERAL ARRANGEMENT OF THE EQUIPMENT AND THE MAJOR COMPONENTS. THE CONTRACTOR IS RESPONSIBLE FOR INSTALLING A FULLY OPERATIONAL UNIT COMPLETE WITH ANCILLARY CONNECTIONS SUCH AS AIR, WATER, POWER, FUEL, AND INSTRUMENTATION.
6. CONTRACTOR SHALL COORDINATE MOUNTING AND INSTALLATION OF ALL UNITS, AND ACCESSORY DEVICES TO BE COMPATIBLE WITH AMBIENT AND ENVIRONMENTAL CONDITIONS OF INSTALLATION LOCATION.
7. CONTRACTOR SHALL PROVIDE PENETRATIONS AND RESPECTIVE FLASHING THROUGH WALLS, FLOORS, AND CEILINGS AS NECESSARY TO ROUTE VENTING PIPES, CONDENSATE PIPES, AND ANY OTHER ACCESSORIES NECESSARY FOR THE PROPE FUNCTION OF THE HVAC UNITS.
8. CONTRACTOR SHALL BE RESPONSIBLE FOR PIPING AND CONNECTING UNITS TO FUEL SOURCES, IF APPLICABLE.
9. IF DAMPERS ARE TO BE INSTALLED IN A ROOM CONTAINING A GENERATOR, THE CONTRACTOR SHALL COORDINATE THE NORMAL POSITION OF THE DAMPERS WITH THE ENGINEER PRIOR TO INSTALLATION.



TYPICAL EXHAUST FAN WIRING SCHEMATIC

NTS

LOUVER SCHEDULE

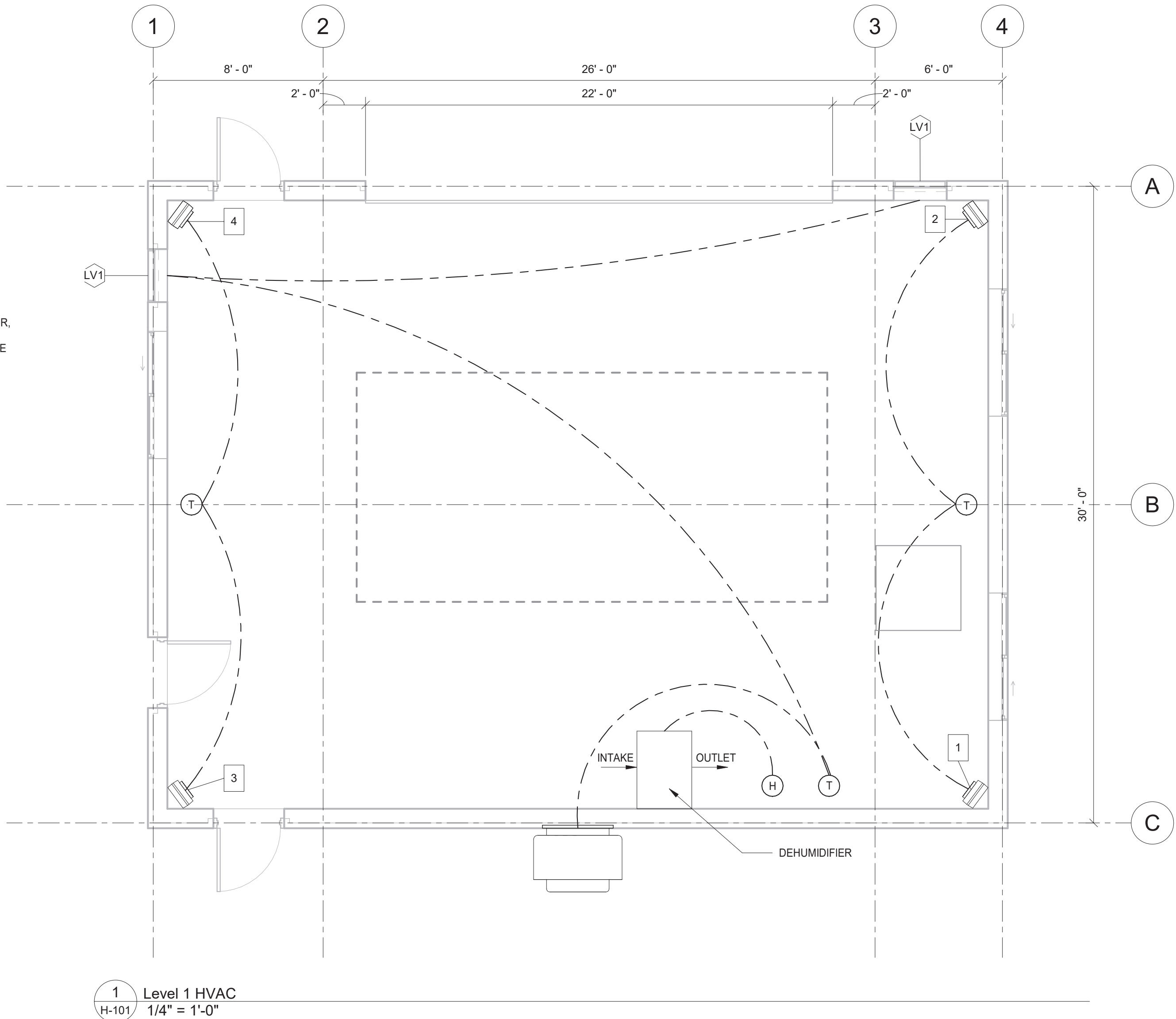
MARK TYPE	ID #	TAG	QTY	MODEL	WIDTH	HEIGHT
LV1	1-1	LV1	2	ECD-601	32	40

UNIT HEATER SCHEDULE

ID	LOCATION	MANUFACTURER & MODEL NUMBER	TYP	KW	BTU	AIRFLOW (CFM)	VOLT/PH/HZ	MAX MTG HGT (FT)	NOTES
UH-1	CLARIFIER BLDG	MODINE NEW-480360-075	HORIZONTAL	7.5	25,600	700	460/3/60	8.5	NEW ADJUSTABLE WALL MOUNT BRACKET
UH-2	CLARIFIER BLDG	MODINE NEW-480360-075	HORIZONTAL	7.5	25,600	700	460/3/60	8.5	NEW ADJUSTABLE WALL MOUNT BRACKET
UH-3	CLARIFIER BLDG	MODINE NEW-480360-075	HORIZONTAL	7.5	25,600	700	460/3/60	8.5	NEW ADJUSTABLE WALL MOUNT BRACKET
UH-4	CLARIFIER BLDG	MODINE NEW-480360-075	HORIZONTAL	7.5	25,600	700	460/3/60	8.5	NEW ADJUSTABLE WALL MOUNT BRACKET

DEHUMIDIFIER SCHEDULE

CAPACITY	LOCATION	MANUFACTURER & MODEL NUMBER	TYP	KW	BTU/H	AIRFLOW (CFM)	VOLT/PH/HZ	NOTES
PPD AT 80°/60% RH	CLARIFIER BLDG	ANDEN A710V3	HORIZONTAL	6.35	16,168	700	277/1/60	CEILING HANGERS AND WALL MOUNTS INCLUDED AS NEEDED PROVIDE A HARD PIPE PVC DRIP LINE TO THE PROPOSED CB IN THE ROOM



DATE: 11/20/24

IB

DRAWN BY:

As Indicated

SCALE:

APPROVER

REVIEWED BY:

PROJECT NO.: 22-2496

FILE:

DELAWARE
ENGINEERING.D.P.C.
CIVIL AND ENVIRONMENTAL ENGINEERING



REVISIONS

NO.	DATE	DESCRIPTION
1	11/01/2024	ADDENDUM #1

RHINEBECK WTP
IMPROVEMENTS
VILLAGE OF RHINEBECK
DUTCHESS COUNTY, NY

HVAC FLOOR PLAN

SHEET:

H-101

WARNING - IT IS A VIOLATION OF NEW YORK EDUCATION LAW SECTION 2209.2, FOR ANY PERSON UNLESS HE IS ACTING UNDER THE DIRECTION OF A LICENSED PROFESSIONAL ENGINEER OR LAND SURVEYOR, TO ALTER THIS DOCUMENT IN ANY WAY. IF ALTERED THE ALTERING PERSON SHALL COMPLY WITH THE REQUIREMENTS OF NEW YORK EDUCATION LAW, SECTION 2209.2.