

Site Preparation/Demolition General Notes

- THESE GENERAL SITE / PREPARATION / DEMOLITION NOTES REFER TO C-SERIES DRAWINGS.
- THE INTENT OF THIS DRAWING IS TO INDICATE PREPARATORY WORK, REMOVALS AND DEMOLITION NECESSARY TO CONSTRUCT THE PROJECT AS SHOWN ON THE REST OF THE CONTRACT DRAWINGS. SOME NOTES ARE GENERAL IN NATURE AND IT SHALL BE UNDERSTOOD THAT IT IS NOT FEASIBLE TO INDICATE EACH AND EVERY SPECIFIC REMOVAL. SITE PREPARATION / DEMOLITION DRAWINGS SHALL NOT BE USED ALONE, BUT SHALL BE USED IN CONJUNCTION WITH THE OTHER DRAWINGS FOR WORK TO BE REMOVED, REUSED, AND / OR REVISED NOT INDICATED HERE.
- CONTRACTOR TO MAINTAIN UTILITY SERVICES TO BUILDINGS TO REMAIN. IF UTILITY SERVICES MUST BE INTERRUPTED THE CONTRACTOR SHALL COORDINATE THAT SHUTDOWN TO MINIMIZE IMPACT TO BUILDINGS. SEE PROJECT MANUAL REGARDING COORDINATION OF DEMOLITION WORK WITH UTILITY COMPANIES.
- THE CONTRACTOR IS RESPONSIBLE TO MAINTAIN SAFE SITE ACCESS TO PEDESTRIAN, VEHICULAR TRAFFIC, EMERGENCY AND HEALTH SAFETY AGENCIES. IF ACCESS WILL BE COMPROMISED IT WILL BE THE RESPONSIBILITY OF THE CONTRACTOR TO COORDINATE AT LEAST ONE WEEK IN ADVANCE WITH THE OWNER'S REPRESENTATIVE AND HEALTH SAFETY AGENCIES, UNLESS OTHERWISE NOTED IN THE PROJECT MANUAL.
- UTILITIES, SIDEWALKS, PAVEMENT, SLABS, FOUNDATIONS, AND MISCELLANEOUS FEATURES NOTED TO BE DEMOLISHED SHALL BE SPOILED OFF-SITE IN A LEGAL MANNER UNLESS OTHERWISE DIRECTED BY THE OWNER'S REPRESENTATIVE. NO BURNING OF DEBRIS SHALL BE ALLOWED. IMMEDIATELY BACKFILL VOIDS WITH COMPACTED GRANULAR MATERIAL AS SPECIFIED.
- WHEN A SITE FEATURE IS INDICATED TO BE REMOVED, THE SITE FEATURE, INCLUDING APPURTENANCES AND FOOTINGS, SHALL BE DISPOSED OF LEGALLY OFF SITE, UNLESS OTHERWISE INDICATED. IMMEDIATELY BACKFILL VOIDS WITH COMPACTED GRANULAR MATERIALS AS SPECIFIED.
- WHEN A SITE FEATURE IS INDICATED TO REMAIN, IT SHALL BE PROTECTED AS INDICATED AND / OR SPECIFIED. WHEN DISTURBANCE OCCURS AROUND AN EXISTING FEATURE, THE CONTRACTOR SHALL USE ADDITIONAL PRECAUTIONS INCLUDING, BUT NOT LIMITED TO HAND DIGGING TO PROTECT THE FEATURE.
- EXISTING ON-SITE UTILITIES SHALL REMAIN UNLESS DESIGNATED FOR REMOVAL. PROTECT ALL EXISTING UTILITIES TO REMAIN.
- MANHOLES, CATCH BASINS, CLEAN OUTS, VALVE BOXES, FRAMES, COVERS AND GRATES REMAINING IN USE SHALL BE PROTECTED AND ADJUSTED TO FINAL GRADES. CONTRACTOR SHALL MAINTAIN POSITIVE DRAINAGE AT ALL TIMES.
- CONTRACTOR IS RESPONSIBLE TO VERIFY GRADES AND UTILITIES SHOWN ON EXISTING CONDITIONS PLAN PRIOR TO START OF WORK. DISCREPANCIES ARE TO BE DOCUMENTED AND SUBMITTED TO THE OWNER'S REPRESENTATIVE AT THE TIME OF DISCOVERY.
- CONTRACTOR SHALL BE RESPONSIBLE FOR RELOCATIONS, INCLUDING, BUT NOT LIMITED TO, UTILITIES, STORM DRAINAGE, SIGNS, ETC. AS INDICATED ON DESIGN DOCUMENTS.
- IF EXISTING SITE FEATURES TO REMAIN ARE DAMAGED DURING CONSTRUCTION BY CONTRACTOR, SITE FEATURES SHALL BE REPAIRED IN-KIND, TYPICAL.
- CONTRACTOR TO REMOVE OR RELOCATE, WHEN APPLICABLE, ALL CONNECTING IMPROVEMENTS, DRAIN PIPES, SANITARY SEWER PIPES, POWER POLES, AND GUY WIRES, WATER METERS AND WATER LINES, WELLS, SIDEWALKS, SIGN POLES, UNDERGROUND GAS, SEPTIC TANKS, AND ASPHALT, SHOWN AND NOT SHOWN, WITHIN CONSTRUCTION LIMITS AND WHERE NEEDED, TO ALLOW FOR NEW CONSTRUCTION AS SHOWN.
- CONTRACTOR TO NOTIFY OWNERS REPRESENTATIVE IF UNIDENTIFIED UTILITIES ARE ENCOUNTERED INCLUDING, BUT NOT LIMITED TO, STORM SEWER, SANITARY SEWER, TELECOMMUNICATIONS SERVICE, ELECTRICAL SERVICE, GAS SERVICE, WATER SERVICE, IRRIGATION LINES, UTILITIES LINES TO REMAIN UNDISTURBED UNTIL DIRECTED BY OWNERS REPRESENTATIVE.
- CONTRACTOR SHALL REQUEST UPFO PRIOR TO START OF ANY WORK. "DIG SAFELY NEW YORK - CALL 811 - BEFORE YOU DIG".

Site Preparation/Demolition Key Notes

- EXISTING LAWN AREA TO REMAIN - REPAIR AS REQUIRED
- EXISTING ASPHALT TO REMAIN, PROTECT. (TYPICAL)
- EXISTING CHAIN LINK FENCE TO REMAIN, PROTECT.
- REMOVE EXISTING PVC COATED CHAIN LINK FENCE AND GATES.
- EXISTING CONCRETE PAD TO REMAIN, PROTECT.
- STRIP, SCREEN, AND STOCKPILE TOPSOIL. STOCKPILE LOCATION TO BE APPROVED BY OWNER'S REPRESENTATIVE. REMOVE SUBGRADE AS REQUIRED TO MEET DESIGN GRADES AND ACCOMMODATE NEW WORK. HAND DIG IN VICINITY OF EXISTING BURIED UTILITIES TO AVOID DAMAGE (TYPICAL).

SITE DEMOLITION AND PREPARATION LEGEND

	REMOVE EXISTING LAWN AND SOIL AS REQUIRED
	REMOVE LINEAR FEATURE REFER TO DRAWINGS FOR TYPE
XXXX	REMOVE SITE FEATURE AS INDICATED IN DEMOLITION KEYNOTES (Outline of Feature)
X	REMOVE SITE FEATURE AS INDICATED IN DEMOLITION KEYNOTES (Specific Feature)

Site Layout Notes

- LAYOUT DIMENSIONS GIVEN ARE FROM FACE OF BUILDING (FOB), FACE OF CURB (F.O.C.), CENTER LINE (CL) AND EDGE OF PAVEMENTS UNLESS OTHERWISE NOTED.
- OBJECTS ARE PARALLEL OR PERPENDICULAR TO EACH OTHER UNLESS OTHERWISE NOTED.
- PAINTED TRAFFIC MARKINGS AND TRAFFIC SIGNS TO COMPLY WITH THE LATEST EDITION OF THE NYSDOT MANUAL OF UNIFORM TRAFFIC CONTROL DEVICES AND LOCAL REQUIREMENTS.
- VERIFY DIMENSIONS IN FIELD WITH OWNER'S REPRESENTATIVE ANY DIMENSIONS NOTED AS "V.I.F."
- AT EDGE OF NEW PAVING MEETING LAWN: ADD TOPSOIL ALONG EDGE OF NEW PAVING TO BRING ADJACENT GRADE FLUSH WITH EDGE OF NEW PAVING AT MAXIMUM 3% SLOPE. CUT NEAT LINE IN EXISTING LAWN AT NEW TOPSOIL LIMIT LINE. REFER TO PROJECT MANUAL SIDEWALK AND ASPHALT PAVEMENT SECTIONS FOR ADDITIONAL REQUIREMENTS.
- SCORE CONCRETE SIDEWALKS AT 5-FT SQUARE UNLESS OTHERWISE NOTED.

Tank Removal Keynotes

- REMOVE EXISTING 3" TANK VENT AT WALL.
- ABANDON EXISTING BURIED FUEL OIL SUPPLY, RETURN AND VENT PIPING IN PLACE. CLEAN PIPING INTERIOR AND CAP PIPING AT TANK AND INSIDE BUILDING.
- REMOVE EXISTING SIGNAGE AND HIGH LEVEL ALARM LIGHT MOUNTED ON EXISTING WALL.
- REMOVE EXG 10,000 GALLON UNDERGROUND FUEL OIL TANK INCLUDING CONCRETE PADS, HOLD DOWN STRAPS, DEADMAN ANCHORS, ETC.
- LIGHT POLE TO REMAIN, PROTECT.

Site Layout Keynotes

- EXISTING ASPHALT PAVEMENT, PROTECT.
- NEW CHILLER. SEE MECHANICAL DRAWINGS.
- 8-FT TALL BLACK VINYL CLAD CHAIN LINK FENCE WITH PRIVACY SLATS. SEE DETAIL 4 / C100.
- 8-FT TALL BLACK VINYL CLAD CHAIN LINK FENCE, 10-FT WIDE DOUBLE LEAF GATE WITH PRIVACY SLATS. SEE DETAIL 3 / C100.
- PROVIDE CONCRETE EQUIPMENT PAD EXTENDING FROM EXISTING EQUIPMENT PAD AS INDICATED. SEE DETAILS 5 AND 6 / C100.
- SEED AREA - PROVIDE 6-INCHES OF AMENDED TOPSOIL, FINE GRADE, SEED, FERTILIZE AND MULCH. LEAVE NEAT SMOOTH EDGE, TYPICAL.
- HAUNCH SLAB AT EDGES. SEE DETAIL 5 / C100.
- THE EXISTING CONCRETE SLAB WAS FIELD MEASURED AT 20 X 28 FT. PLEASE FIELD VERIFY THOSE DIMENSIONS SO THAT REQUIRED HORIZONTAL CLEARANCES BETWEEN UNITS AND SITE ELEMENTS CAN BE VERIFIED.

Site Layout Legend	
	CONCRETE PAVING
	TOPSOIL, LAWN SEEDING & MULCHING

General Site Notes


- THESE GENERAL SITE NOTES APPLY TO C-SERIES DRAWINGS.
- REFER TO SURVEY FOR INFORMATION ON EXISTING FEATURES. IF EXISTING FEATURES ARE MISSING, MODIFIED, OBSCURED, OR THERE IS A CONFLICT BETWEEN HOW AN EXISTING FEATURE IS PORTRAYED ON THIS SHEET AND THE SURVEY, THE SURVEY SHALL GOVERN.
- PRIOR TO CONSTRUCTION, LOCATE AND PROMINENTLY MARK THE PROPERTY LINES IN THE FIELD. PROTECT PROPERTY LINE MARKING AND MONUMENTS DURING CONSTRUCTION UNTIL FINAL ACCEPTANCE.
- THE SURVEY(S) INCLUDED IN THESE DOCUMENTS ARE PROVIDED FOR INFORMATION ONLY AND ARE THE BASE INFORMATION USED TO PREPARE THE WORK INDICATED ON THESE DRAWINGS. THE DATA INDICATED REGARDING EXISTING CONDITIONS IS NOT INTENDED AS REPRESENTATIONS OR WARRANTIES OF THEIR ACCURACY. BY INCLUSION OF THE SURVEY(S) IN THIS SET OF DOCUMENTS, TETRA TECH AND THE OWNER DO NOT ASSUME RESPONSIBILITY FOR ACCURACY OF THE SURVEY, NOR FOR INTERPRETATIONS OR CONCLUSIONS DRAWN THEREFROM BY THE CONTRACTOR.
- THE CONTRACTOR SHALL FIELD VERIFY EXISTING FEATURES, CONDITIONS, UTILITIES, PROPERTY LINES AND TOPOGRAPHY PRIOR TO COMMENCEMENT OF WORK. ANY DISCREPANCIES WHICH WILL AFFECT THE WORK REQUIRED AS PART OF THE CONTRACT DOCUMENTS SHALL BE IMMEDIATELY REPORTED IN WRITING TO THE ARCHITECT. COMMENCEMENT OF WORK WITHOUT THIS WRITTEN NOTIFICATION SHALL CONSTITUTE CONTRACTOR ACCEPTANCE OF THE EXISTING INFORMATION INDICATED ON THE DRAWINGS AS ACCURATE. NO ADJUSTMENTS TO THE CONTRACT WILL BE MADE FOR THE DISCREPANCIES BROUGHT TO THE OWNER'S ATTENTION AFTER WORK HAS BEGUN.
- NO ATTEMPT HAS BEEN MADE TO SHOW ALL UNDERGROUND UTILITIES ON THIS DRAWING. CONTACT UNDERGROUND UTILITY LOCATION ORGANIZATION AND LOCAL UTILITY COMPANIES TO VERIFY THE LOCATION OF UTILITIES PRIOR TO EARTHWORK, TRENCHING OR EXCAVATION OPERATIONS.
- CONTRACT LIMIT LINE SHALL BE TEN FEET OUTSIDE OF LIMITS OF WORK INDICATED ON THESE DRAWINGS AND NOT TO EXTEND BEYOND THE PROPERTY LINE UNLESS OTHERWISE INDICATED.
- CONTRACTOR SHALL PROVIDE CONSTRUCTION/PROTECTIVE FENCING OR OTHER MEANS NECESSARY TO PROTECT WORK AND TO ENSURE SAFETY OF THE PUBLIC, PEDESTRIANS AND VEHICULAR TRAFFIC DURING CONSTRUCTION.
- FOR INFORMATION REGARDING SUBSURFACE CONDITIONS AND TEST LOCATIONS, COORDINATE WITH OWNER REGARDING THE AVAILABILITY OF GEOTECHNICAL INFORMATION.
- AT EDGE OF ALL NEW PAVING MEETING LAWN, REMOVE EXISTING TURF TO MINIMUM OF 4-FT FROM NEW PAVEMENT EDGE, UNLESS OTHERWISE NOTED. CUT NEAT REMOVAL LINE AND SCARIFY EXISTING GRADE. PROVIDE TAMPED TOPSOIL TO BRING EXISTING GRADE FLUSH WITH NEW PAVING. SLOPE LAWN AWAY FROM PAVING TO PREVENT PONDING. FINE GRADE, FERTILIZE, SEED AND MULCH IN ACCORDANCE WITH THE PROJECT MANUAL.

General Tank Removal Notes

- REFER TO SPECIFICATION SECTION 02 65 00- UNDERGROUND STORAGE TANK PERMANENT CLOSURE FOR INFORMATION REGARDING TANK REMOVAL AND ASSOCIATED TESTING.

S.E.D. Control No. 13-02-00-04-0-020-xxx


Rev. No.: Date: Description:



complex world | CLEAR SOLUTIONS

Tetra Tech Engineers, Architects & Landscape Architects, P.C.

Reg. Expires: 03/31/2027



REGISTERED ARCHITECT
F. Daniel D. Hann

TETRA TECH
ARCHITECTS & ENGINEERS

Beacon City School District
Beacon, New York

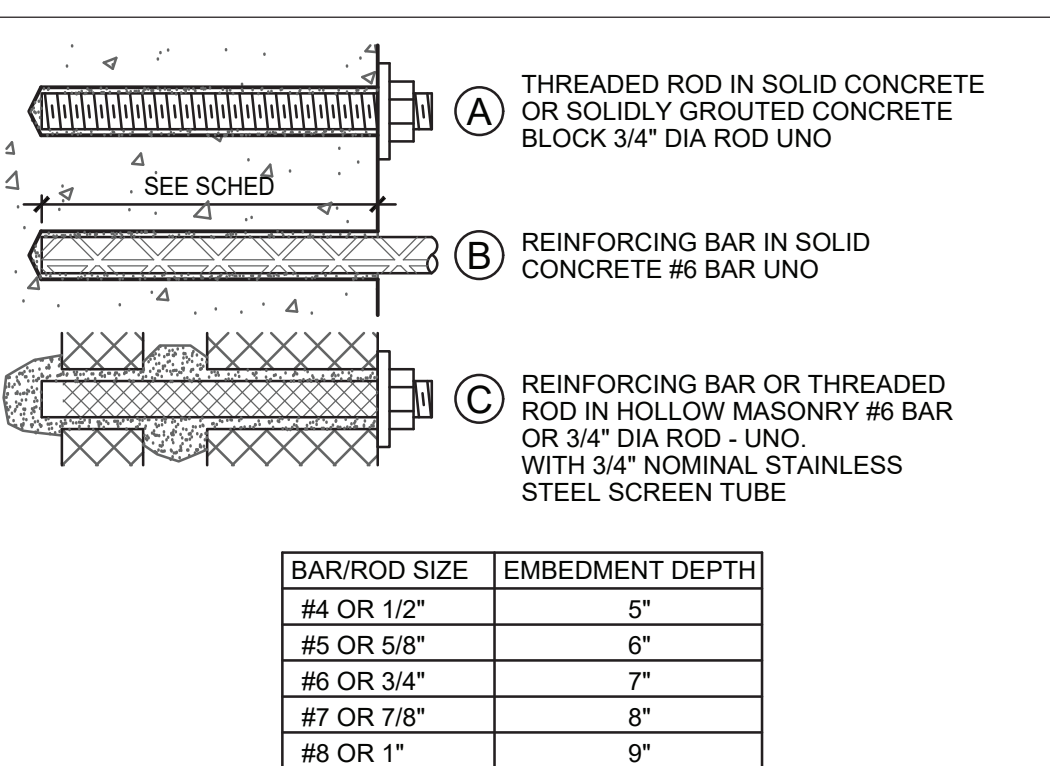
Reconstruction to:
Beacon City High School

Site Demolition and Layout Plans and
Site Details

Drawn by: JMR Date: 12/1/2024 Drawing No.:

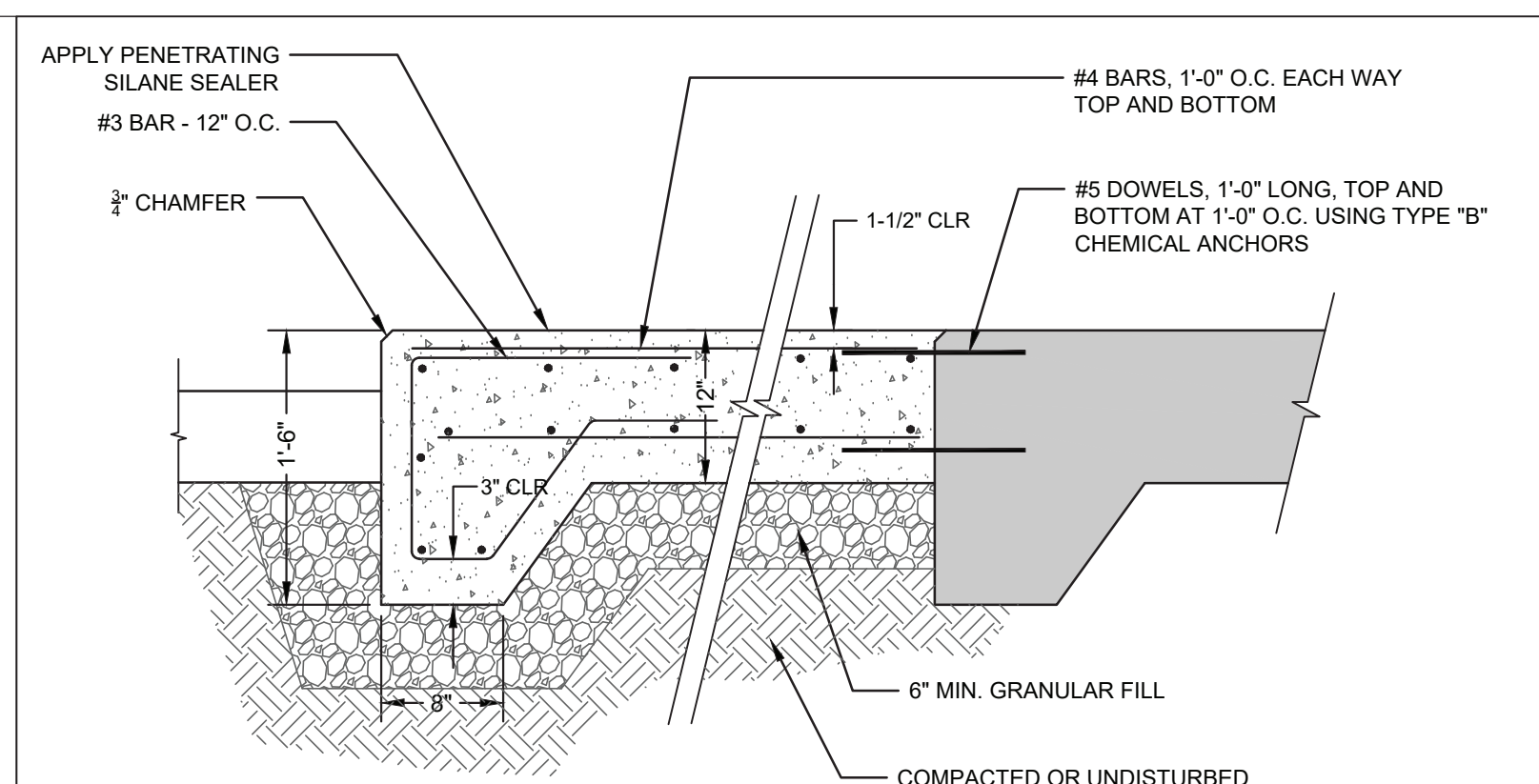
Project No.: 279180-24002.1

FC100

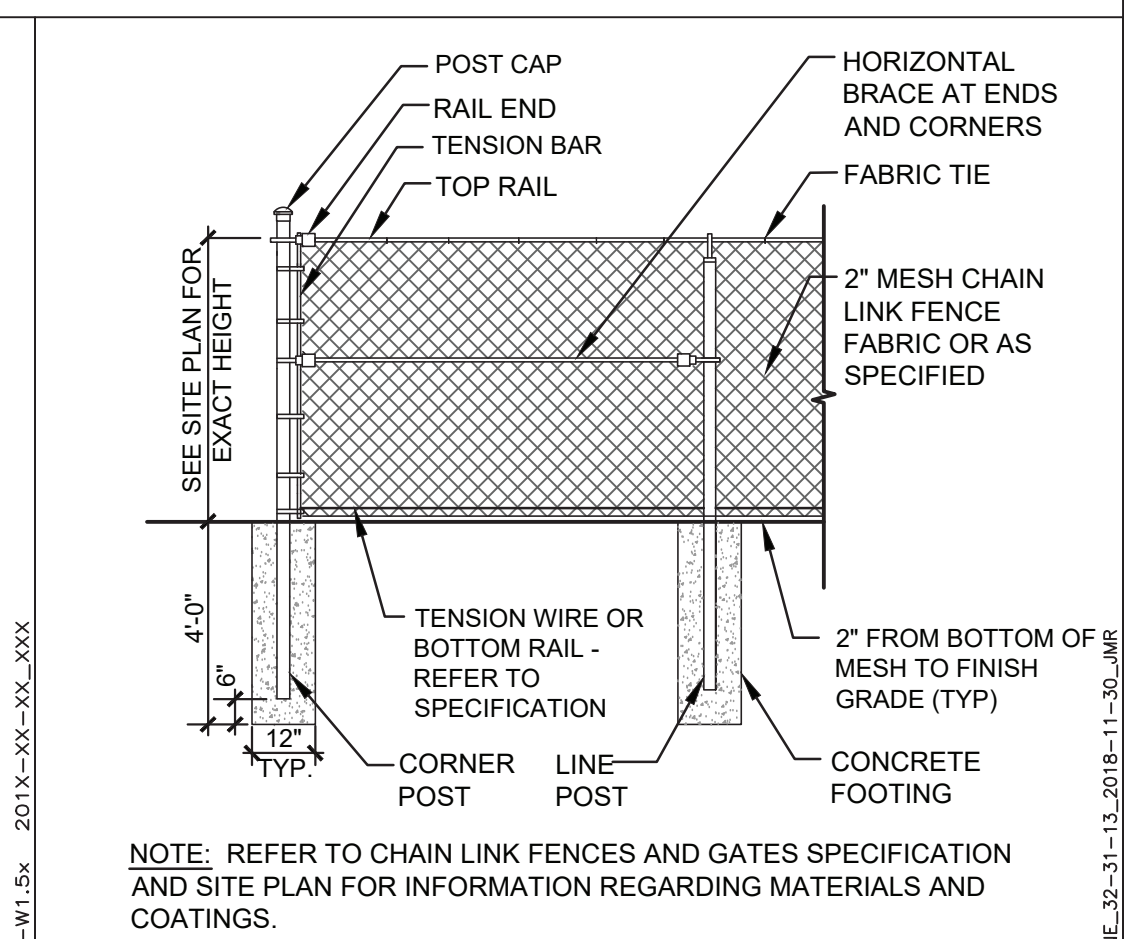


- GENERAL NOTES
- FOR ACCEPTABLE ADHESIVE PRODUCTS REFER TO SPECIFICATIONS.
 - COMPLY WITH MANUFACTURERS REQUIREMENTS FOR INSTALLATION.

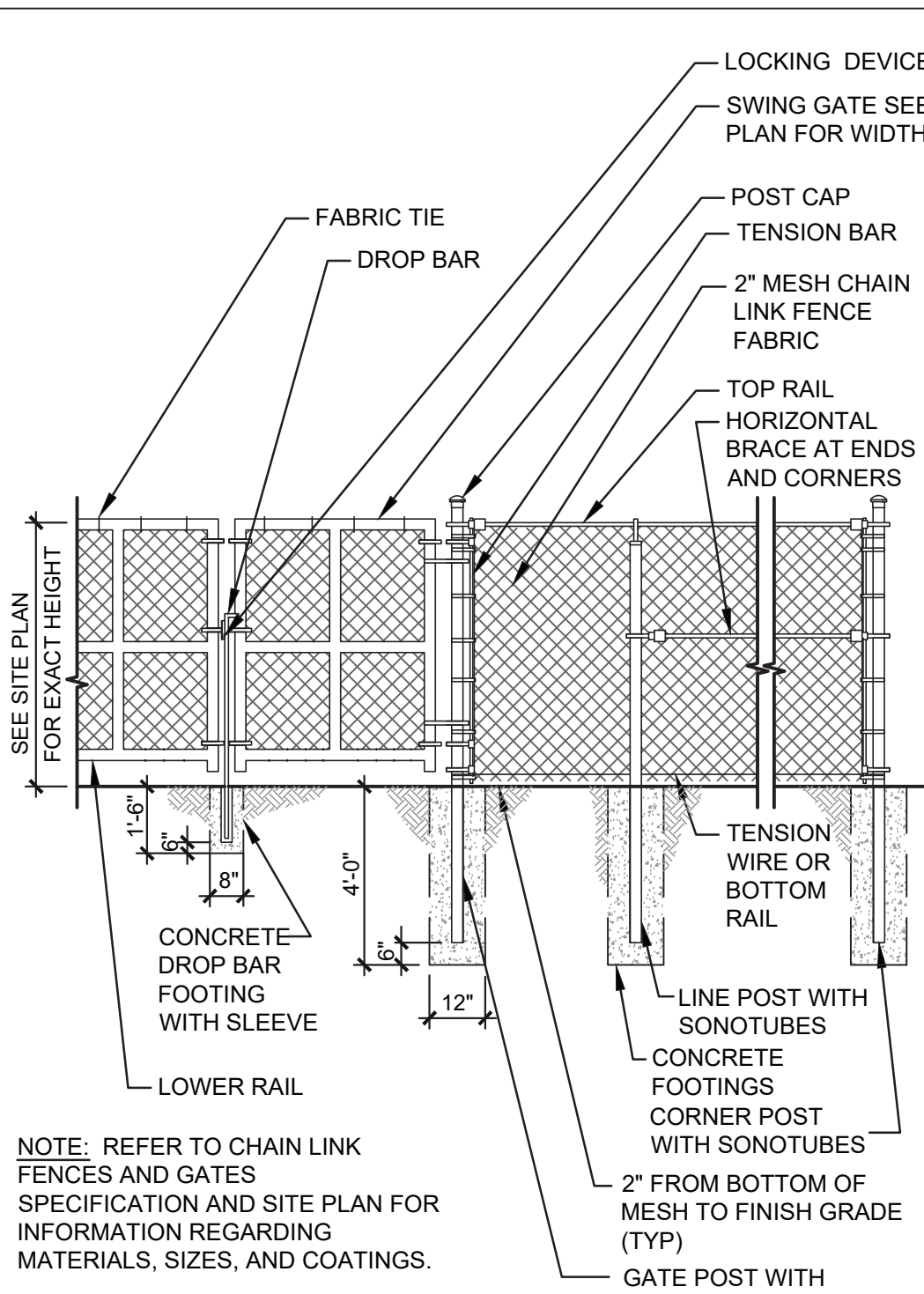
6 Typical Chemical Anchors
3"=1'-0"



5 Exterior Equipment Pad Extension Detail
NTS



4 Chain Link Fence
NTS



3 Chain Link Fence with Double Gates
NTS