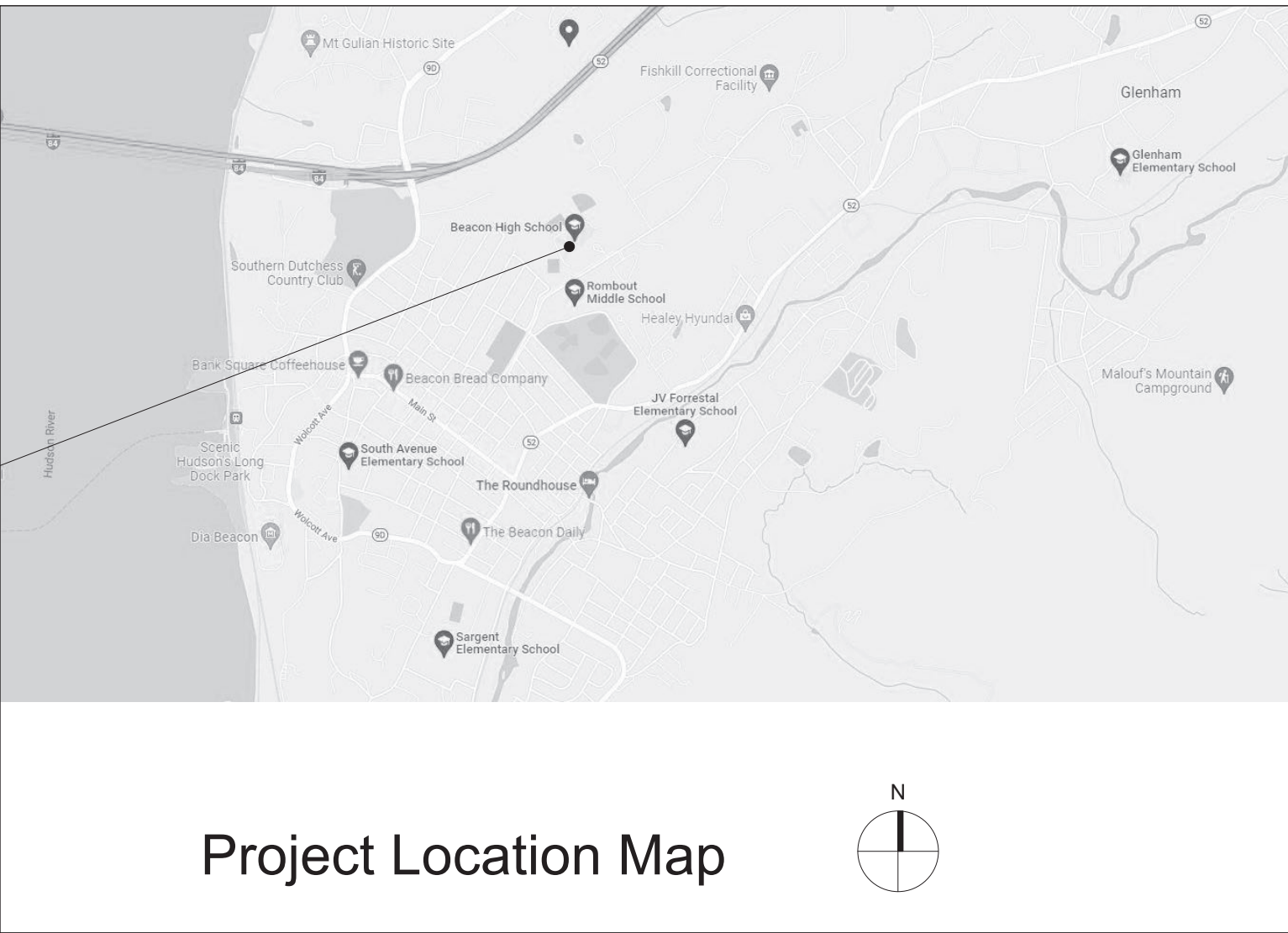


Reconstruction to:  
Beacon High School

13-02-00-01-0-020-013

BEACON HIGH SCHOOL



Beacon City School District  
Beacon, NY

Drawing List

- GENERAL  
G001 Title Sheet  
G100 Symbols and Abbreviations

Beacon High School

- CODE COMPLIANCE  
FG350 Code Compliance Review  
FG351 Code Compliance First Floor Plan  
FG352 Code Compliance 2nd Floor Plan
- CIVIL  
FC100 Site Demolition and Layout Plans and Site Details
- MECHANICAL  
FM050 First Floor Key Plan  
FM100 First Floor, Roof and Yard Demolition Plan  
FM130 Boiler Room and Equipment Yard - Piping Plan  
FM200 Hot and Chilled Water Boiler Room Piping Schematics  
FM500 Details  
FM600 Schedules and Controls
- ELECTRICAL  
FE050 First Floor Key Plan  
FE100 First Floor and Yard Demolition Plan  
FE160 First Floor Power Plan  
FE500 Details

Drawn By: TTAE	Date: 03/28/2025	Drawing Number: <b>AA130</b>
Project No.: 279180-24002.1		
BUILDING DESIGNATOR	↑	
DISCIPLINE DESIGNATOR	↑	
SHEET TYPE DESIGNATOR	↑	
SHEET SEQUENCE DESIGNATOR	↑	



**TETRA TECH**  
ARCHITECTS & ENGINEERS

Architecture Engineering Planning  
& High Performance Facilities

Tetra Tech Engineers, Architects & Landscape Architects, P.C.

Volume 1 of 1

Set No.

BID SET

279180-24002.1  
03/28/2025

Drawing Number:  
G001



	SPOT ELEVATION
	TOP OF CURB ELEVATION
	BOTTOM OF CURB ELEVATION
	EXISTING SPOT ELEVATION
	CONTOUR
	EXISTING CONTOUR
	SOIL TEST BORING
	TEST PIT LOCATION
	TREE OR SHRUB
	TREE OR SHRUB TO REMAIN
	TREE OR SHRUB TO BE REMOVED
	ASPHALT PAVING OR TOP COURSE
	HEAVY DUTY ASPHALT PAVING
	REMOVE AND REPLACE ASPHALT PAVING
	CONCRETE PAVING
	CONCRETE SECTION
	CURBING
	CURBING TO REMAIN
	CURBING TO BE REMOVED
	FENCING
	FENCING TO REMAIN
	FENCING TO BE REMOVED
	SILT FENCING
	TEMPORARY CONSTRUCTION FENCING
	HAY BALES
	TEMPORARY TREE PROTECTION
	UTILITY POLE
	UTILITY POLE TO REMAIN
	UTILITY POLE TO BE REMOVED
	NEW OR RELOCATED FIRE HYDRANT
	FIRE HYDRANT TO REMAIN
	DROP INLET
	CATCH BASIN
	STORM/SANITARY MANHOLE
	DROP INLET TO REMAIN
	MANHOLE/CATCH BASIN/DRYWELL TO REMAIN
	DRYWELL W/ GRATE
	DRYWELL W/ SOLID COVER TO GRADE
	DRYWELL W/ COVER BURIED
	STORM LINE WITH HEADWALL
	STORM LINE WITH ENDWALL
	STORM LINE WITH END SECTION
	STORM PIPE
	STORM PIPE TO REMAIN
	STORM PIPE TO BE REMOVED/ABANDONED
	UNDERDRAIN
	UNDERDRAIN TO REMAIN
	UNDERDRAIN TO BE REMOVED/ABANDONED
	SANITARY LINE
	SANITARY LINE TO REMAIN
	SANITARY LINE TO BE REMOVED/ABANDONED
	GAS LINE
	GAS LINE TO REMAIN
	GAS LINE TO BE REMOVED/ABANDONED
	WATER LINE
	WATER LINE TO REMAIN
	WATER LINE TO BE REMOVED/ABANDONED
	STORMS/SANITARY CLEANOUT
	GATE VALVE
	SIGN POST
	UNIVERSAL HANDICAP SYMBOL
	REMOVAL
	RIP-RAP

	EXISTING TO REMAIN
	DEMOLITION WORK
	NEW WORK IN EXISTING (MATERIAL INDICATION VARIES)
	NEW WORK (MATERIAL INDICATION VARIES)
	CMU AND BRICK CAVITY WALL
	CMU WALL
	GYPSON BOARD PARTITION W/ METAL STUD WALL
	OPERABLE PARTITION
	DOOR NUMBER (ROOM NO W/ DOOR NO)
	WINDOW TYPE
	RELOCATED EQUIPMENT FURNITURE OR CASEWORK NUMBER
	PARTITION TYPE
	BOARD UNIT SYMBOL
	FINISH CHANGE
<b>ROOF SYMBOLS</b>	
	AREA OF TAPERED INSULATION
	EXISTING ROOF DRAIN WITH RETROFIT ROOF DRAIN INSERT IN NEW FACTORY-TAPERED SUMP
	CONTROL JOINT
	DIRECTION OF DOWNWARD SLOPE AND DEGREE OF SLOPE OF TAPERED INSULATION (MINIMUM 1/8\"/>
	DIRECTION OF DOWNWARD SLOPE OF TAPERED INSULATION CRICKET (MINIMUM 1/4\"/>
	DIRECTION OF DOWNWARD SLOPE OF ROLLED OR SLOPED STRUCTURE
	TOTAL THICKNESS OF INSULATION
	TOTAL THICKNESS OF AREA OF FLAT INSULATION
	DESIGNATES ROOF SYSTEM TYPE
	WALKWAY PAD
	SKYLIGHT (REINSTALLED OR REPLACED)
	SMOKE VENT OR ROOF HATCH
	PIPE PENETRATION
	ROOFTOP HOOD ON CURB, TYP
	ROOFTOP EQUIPMENT ON CURB, TYP (SHAPE AND SIZE VARY)
<b>REFLECTED CEILING SYMBOLS</b>	
	BOTTOM OF CEILING AFF
	CEILING MATERIAL
	CEILING HUNG UNIT VENTILATOR OR CEILING HUNG FAN COIL UNIT
	CEILING RETURN/EXHAUST GRILLE
	CEILING SUPPLY DIFFUSER/GRILLE
	EXIT LIGHT
	2 X 4 FIXTURE IN 2 X 2 PATTERN

INDICATES AREA IS EXISTING

INDICATES SLAB IS DERESSED OR RECESSED

TOP OF FTG ELEVAT FROM DATUM

CONTINUOUS FTG

FOUNDATION WALL

BM POCKET ELEVATION FROM DATUM

STEPPED FOOTING

INDICATES PIER TYPE

P1 [-8]

TOP OF PIER ELEVAT FROM DATUM

F4 [-3'-0"]

TOP OF FOOTING ELEVATION FROM DATUM

INDICATES FOOTING TO REFER TO FOOTING SCHEDULE

INDICATES A FRAME ROOF OR FLOOR OF COORD SIZE AND LOCATION

RD

INDICATES FRAMED OPNG IS FOR

RD = ROOF DRAIN

ME = MECH EQUIP

SL = SKYLIGHT

SH = SMOKE HATCH

AH = ACCESS HATCH

ELEVATION FROM DRAWING DATUM

BEAM SIZE

NUMBER OF SHEAR STUDS OVER FULL LENGTH OF BEAM

W8X15 [14] (GIR)

21K

INDICATES TOP OF AT ADJ GIRDER ELEV

END REACTION- KIPS

DEFLECTION (INCHES) APPROX W/ WET CO

LINTEL DESIGNATION SEE SCHEDULE

INDICATES LINTEL CONNECTION TO COLUMN

L-2

INDICATES MEMBER IS EXISTING

INDICATES BEAM SPLICE

INDICATES MOMENT CONNECTION

OVER COLUMN

INDICATES SHEAR V CONNECTION TO BE

INDICATES BM TO HALL TOP OF WALL CLIPS

JOIST DESIGNATION SEE SCHEDULE

12K3

INDICATES JOIST TYPE

JOIST

DIAGONAL BRIDGING

MASONRY LOAD BEARING WALL

SHEAR WALL SEE SCHEDULE

CFMF BEARING WALL

FIREWALL

WALL TYPE

<b>TAG NO. VALUE</b>	EQUIPMENT TAG (NON-MOTORIZED)	ATV — ATMOSPHERIC VENT BBD — BOILER BLOW DOWN CWS — CHILLED WATER SUPPLY CWR — CHILLED WATER RETURN CGS — CHILLED GLYCOL SUPPLY CGR — CHILLED GLYCOL RETURN CD — CONDENSATE DRAIN C — CONDENSER WATER SUPPLY CR — CONDENSER WATER RETURN GS — GLYCOL SUPPLY GR — GLYCOL RETURN HGS — HOT GLYCOL SUPPLY HGR — HOT GLYCOL RETURN HPWS — HEAT PUMP SUPPLY HPWR — HEAT PUMP RETURN HWS — HOT WATER SUPPLY HWR — HOT WATER RETURN HCS — HOTCHILLED WATER SUPPLY HCR — HOTCHILLED WATER RETURN LPS — LOW PRESSURE STEAM LPC — LOW PRESSURE CONDENSATE LPWC — LOW PRESSURE STEAM WET (FLOODED) CONDENSATE MU — MECHANICAL EQUIPMENT MAKE-UP COLD WATER(NON-POTABLE)  RS — REFRIGERANT SUCTION RL — REFRIGERANT LIQUID HG — REFRIGERANT HOT GAS PD — PUMP DISCHARGE  EXG — EXISTING HVAC PIPE — BOTTOM PIPE CONNECTION — TOP PIPE CONNECTION — PIPE ELBOW DOWN — PIPE ELBOW UP — PIPE DOWN WITH CLEANOUT AT BASE — PIPE DOWN WITH SHUTOFF VALVE CAP OR PLUG — UNION CONNECTION — FLANGE CONNECTION — PIPING REDUCER (CONCENTRIC) — PIPING REDUCER (ECCENTRIC) — PIPE ANCHOR — PIPE GUIDE — EXPANSION COMPENSATOR EXPANSION JOINT — FLEX CONNECTOR TEMPERATURE OR PRESSURE PROBE WELL THERMOMETER PRESSURE SWITCH PRESSURE GAUGE TEMPERATURE/ PRESSURE GAUGE MANUAL AIR VENT AUTOMATIC AIR VENT STEAM VENT VACUUM BREAKER FLOW SWITCH FLOW METER ORIFICE METER VENTURI FLOW METER WYE STRAINER WYE STRAINER WITH BLOW DOWN VALVE DIRECTION OF FLOW PIPE BREAK WATER METER	ATV — ATMOSPHERIC VENT BBD — BOILER BLOW DOWN CWS — CHILLED WATER SUPPLY CWR — CHILLED WATER RETURN CGS — CHILLED GLYCOL SUPPLY CGR — CHILLED GLYCOL RETURN CD — CONDENSATE DRAIN C — CONDENSER WATER SUPPLY CR — CONDENSER WATER RETURN GS — GLYCOL SUPPLY GR — GLYCOL RETURN HGS — HOT GLYCOL SUPPLY HGR — HOT GLYCOL RETURN HPWS — HEAT PUMP SUPPLY HPWR — HEAT PUMP RETURN HWS — HOT WATER SUPPLY HWR — HOT WATER RETURN HCS — HOTCHILLED WATER SUPPLY HCR — HOTCHILLED WATER RETURN LPS — LOW PRESSURE STEAM LPC — LOW PRESSURE CONDENSATE LPWC — LOW PRESSURE STEAM WET (FLOODED) CONDENSATE MU — MECHANICAL EQUIPMENT MAKE-UP COLD WATER(NON-POTABLE)  RS — REFRIGERANT SUCTION RL — REFRIGERANT LIQUID HG — REFRIGERANT HOT GAS PD — PUMP DISCHARGE  EXG — EXISTING HVAC PIPE — BOTTOM PIPE CONNECTION — TOP PIPE CONNECTION — PIPE ELBOW DOWN — PIPE ELBOW UP — PIPE DOWN WITH CLEANOUT AT BASE — PIPE DOWN WITH SHUTOFF VALVE CAP OR PLUG — UNION CONNECTION — FLANGE CONNECTION — PIPING REDUCER (CONCENTRIC) — PIPING REDUCER (ECCENTRIC) — PIPE ANCHOR — PIPE GUIDE — EXPANSION COMPENSATOR EXPANSION JOINT — FLEX CONNECTOR TEMPERATURE OR PRESSURE PROBE WELL THERMOMETER PRESSURE SWITCH PRESSURE GAUGE TEMPERATURE/ PRESSURE GAUGE MANUAL AIR VENT AUTOMATIC AIR VENT STEAM VENT VACUUM BREAKER FLOW SWITCH FLOW METER ORIFICE METER VENTURI FLOW METER WYE STRAINER WYE STRAINER WITH BLOW DOWN VALVE DIRECTION OF FLOW PIPE BREAK WATER METER	<b>TAG NO. NECK SZ. CFM</b>	REGISTER, GRILLE, DIFFUSER	FIN TUBE RADIATION	ENCLOSURE NOTED AS: WW: WALL TO WALL, WJ: WALL TO UNIT, WD: WALL TO DOOR, ETC.,	<b>FTR-TYPE ENC. FT-IN ELEM. FT-IN GPM</b>	SUPPLY DUCT  RETURN DUCT  EXHAUST DUCT - NEGATIVE PRESSURE  DUCTWORK, FIRST VALUE IS SIZE OF SIDE IN VIEW  DUCT TRANSITION  DUCT OFFSET  RECTANGULAR ELBOW W/TURNING VANES  RECTANGULAR ELBOW  ROUND DUCTWORK W/ MITERED ELBOW  RADIUS ELBOW W/ TURNINGS/SPLITTER VANES  RADIUS ELBOW  STANDARD BRANCH DUCT W/VOLUME DAMPER  ACOUSTICALLY LINED DUCTWORK  ACOUSTICALLY LINED DUCTWORK (UP/DOWN)  FLEXIBLE DUCT  VOLUME DAMPER  FIRE DAMPER  SMOKE DAMPER  FIRE AND SMOKE DAMPER  AUTOMATIC AIR DAMPER  BACKDRAFT DAMPER  EXISTING DUCTWORK  STATIC PRESSURE CLASS  FREE AIR FLOW DUCT AIR FLOW  EXISTING MECHANICAL EQUIPMENT TO BE REMOVED  EXISTING MECHANICAL EQUIPMENT  MECHANICAL EQUIPMENT  ACCESS CLEARANCE	BASKET STRAINER DUPLEX BASKET STRAINER  AQUASTAT PITCH PIPING (DOWN) AUTOMATIC FLOW CONTROL VALVE BACKFLOW PREVENTOR BALANCING VALVE BALL VALVE EXISTING BALL VALVE BUTTERFLY VALVE CHECK VALVE 2-WAY CONTROL MODULATING VALVE 3-WAY CONTROL MODULATING VALVE (INSTALL STEM VERTICAL) 3-WAY CONTROL THERMOSTATIC MIXING VALVE (SELF-CONTAINED) SOLENOID (ELECTRIC) ON/OFF MOTORIZED MODULATING VALVE FUSIBLE LINK VALVE GAS PRESSURE REGULATOR VALVE TRIPLI DUTY VALVE GATE VALVE GLOBE VALVE OS&Y GATE VALVE PLUG VALVE PRESSURE REDUCING VALVE PRESSURE RELIEF VALVE STEAM TRAP THERMOSTATIC STEAM TRAP FLOAT AND THERMOSTATIC STEAM TRAP BUCKET STEAM TRAP AIR SEPARATOR CIRCULATING PUMP WATER HAMMER ARRESTOR CLEANOUT PLUG CLEANOUT DECK PLATE FIRE RISER VALVE ASSEMBLY BURNER SHUT OFF HUMIDISTAT HUMIDITY SENSOR HUMIDITY SENSOR W/ GUARD PRESSURE SENSOR PRESSURE SENSOR W/ GUARD SWITCH THERMOSTAT THERMOSTAT W/ GUARD TEMPERATURE SENSOR CO <sub>2</sub> SENSOR POINT OF CONNECTION FIRE DEPARTMENT CONNECTION CARBON MONOXIDE SENSOR NATURAL GAS SENSOR LIQUID PROPANE SENSOR	CONNECTION TO EXISTING PIPING PLATE STRAINER HOSE BIBB COMPRESSED AIR LABORATORY VENT LABORATORY WASTE LABORATORY WASTE VENT SANITARY (ABOVE GRADE) SANITARY (BURIED) INDIRECT WASTE STORM (ABOVE GRADE) STORM (BURIED) FIRE STANDPIPE FIRE MAIN FIRE SPRINKLER EXISTING COLD WATER EXISTING HOT WATER EXG HOT WATER RETURN EXISTING 110° HOT WATER EXISTING 140° HOT WATER EXISTING 180° HOT WATER COLD WATER HOT WATER HOT WATER RETURN 110° HOT WATER 110° HOT WATER 140° HOT WATER 140° HOT WATER 180° HOT WATER TEMPERED (HOT) WATER RAW WATER SOFT WATER DEIONIZED WATER DISTILLED WATER GAS PROPANE DIESEL FUEL UNLEADED GASOLINE EXG FUEL OIL SUPPLY FUEL OIL SUPPLY EXG FUEL OIL RETURN FUEL OIL RETURN EXG FUEL OIL VENT FUEL OIL VENT MECHANICAL EQUIPMENT MAKE-UP COLD WATER (NON-POTABLE) EXISTING ROOF DRAIN ROOF DRAIN REPLACEMENT ROOF DRAIN SCUPPER ROOF DRAIN EXG PLUMBING FIXTURE TO BE REMOVED EXG PLUMBING FIXTURE FLOOR DRAINS FLOOR SINK WALL HYDRANT FIRE HOSE CABINET UPRIGHT SPRINKLER PENDANT SPRINKLER CONCEALED SPRINKLER RECESSED SPRINKLER SIDEWALL SPRINKLER
--------------------------	-------------------------------	---------------------------------------------------------------------------------------------------------------------------------------------------------------------------------------------------------------------------------------------------------------------------------------------------------------------------------------------------------------------------------------------------------------------------------------------------------------------------------------------------------------------------------------------------------------------------------------------------------------------------------------------------------------------------------------------------------------------------------------------------------------------------------------------------------------------------------------------------------------------------------------------------------------------------------------------------------------------------------------------------------------------------------------------------------------------------------------------------------------------------------------------------------------------------------------------------------------------------------------------------------------------------------------------------------------------------------------------------------------------------------------------------------------------------------------------------------------------------------------------------------------------------------------------------------------------------------------------------------------------------------------------------------------	---------------------------------------------------------------------------------------------------------------------------------------------------------------------------------------------------------------------------------------------------------------------------------------------------------------------------------------------------------------------------------------------------------------------------------------------------------------------------------------------------------------------------------------------------------------------------------------------------------------------------------------------------------------------------------------------------------------------------------------------------------------------------------------------------------------------------------------------------------------------------------------------------------------------------------------------------------------------------------------------------------------------------------------------------------------------------------------------------------------------------------------------------------------------------------------------------------------------------------------------------------------------------------------------------------------------------------------------------------------------------------------------------------------------------------------------------------------------------------------------------------------------------------------------------------------------------------------------------------------------------------------------------------------	-------------------------------------	----------------------------	--------------------	------------------------------------------------------------------------------------------	--------------------------------------------------------	-----------------------------------------------------------------------------------------------------------------------------------------------------------------------------------------------------------------------------------------------------------------------------------------------------------------------------------------------------------------------------------------------------------------------------------------------------------------------------------------------------------------------------------------------------------------------------------------------------------------------------------------------------------------------------------------------------------------------------------------------------------------------------------------------------------------------------------------------------------------------------------------	-----------------------------------------------------------------------------------------------------------------------------------------------------------------------------------------------------------------------------------------------------------------------------------------------------------------------------------------------------------------------------------------------------------------------------------------------------------------------------------------------------------------------------------------------------------------------------------------------------------------------------------------------------------------------------------------------------------------------------------------------------------------------------------------------------------------------------------------------------------------------------------------------------------------------------------------------------------------------------------------------------------------------------------------------------------------------------------------------------------------------------------------------------------------------------------------------------------------------------------------------------	----------------------------------------------------------------------------------------------------------------------------------------------------------------------------------------------------------------------------------------------------------------------------------------------------------------------------------------------------------------------------------------------------------------------------------------------------------------------------------------------------------------------------------------------------------------------------------------------------------------------------------------------------------------------------------------------------------------------------------------------------------------------------------------------------------------------------------------------------------------------------------------------------------------------------------------------------------------------------------------------------------------------------------------------------------------------------------------------------------------------------------------------------------------------------------------------------------------------------------------------------------------------------------

#	LUMINAIRE* # DENOTES TYPE		CABLE TRAY - LADDER TYPE
	EMERGENCY LUMINAIRE* # DENOTES TYPE		CABLE TRAY - BASKET TYPE
	LUMINAIRE* # DENOTES TYPE		SURFACE RACEWAY TYPE AS DESCRIBED ON DWGS.
	EMERGENCY LUMINAIRE* # DENOTES TYPE	SR	
	COMBINATION EXIT/EMERGENCY LUMINAIRE* # DENOTES TYPE	CI	COMMUNICATION INTERFACE OUTLET
	EMERGENCY LUMINAIRE* # DENOTES TYPE	CS	CEILING MOUNT SPEAKER
	COMBINATION EXIT/EMERGENCY LUMINAIRE* # DENOTES TYPE	VS	WALL MOUNT SPEAKER
	EMERGENCY LUMINAIRE* # DENOTES TYPE	VC	VOLUME CONTROL
	EXIT LIGHT* - CEILING MOUNTED # DENOTES TYPE	VS	HORN SPEAKER
	EXIT LIGHT* - WALL MOUNTED # DENOTES TYPE	VB	PROGRAM BELL
	* ALL LUMINAIRE SYMBOLS NOT SHOWN, REFER TO LUMINAIRE SCHEDULE	FB	FLOOR BOX
	DAYLIGHT SENSOR	DR	DOOR RELEASE
	AREA OF RESCUE LIGHT FIXTURE # DENOTES TYPE	SE	SECURITY ALARM HORN
	POLE MOUNTED SITE LIGHT # DENOTES TYPE	SC	SECURITY SENSOR
	LIGHT SWITCH (LINE VOLTAGE) # KEY OPERATED 3 - 3 WAY 4 - 4 WAY	SC	GB - GLASS BREAK MO - MOTION DETECTOR SD - SOUND DETECTOR
	LOW VOLTAGE CONTROL	DX	SECURITY DOOR CONTACT
	TIME CLOCK	KR	SECURITY SYSTEM KEYPAD # DENOTES DESIGNATION
	OCCUPANCY SENSOR	HC	SECURITY CAMERA # DENOTES DESIGNATION
	VACANCY SENSOR	REX	SECURITY REQUEST TO EXIT SENSOR
	PHOTO CELL	PS	LOW VOLTAGE POWER SUPPLY # DENOTES DESIGNATION
	LIGHTING TOUCHSCREEN CONTROL	ELH	SECURITY ELECTRIC LOCKING HARDWARE
	CARBON MONOXIDE DETECTOR	IC	DOOR INTERCOM CALL STATION # DENOTES DESIGNATION
	FIRE ALARM MANUAL PULL STATION	CR	ACCESS CONTROL CARD READER # DENOTES DESIGNATION
	FIRE ALARM BELL	ADA	ADA PUSH BUTTON
	WISTROBE W/O STROBE	MON	SECURITY CCTV MONITOR
	FIRE ALARM HORN- WISTROBE W/O STROBE	DB	SECURITY DURESS BUTTON
	SMOKE DETECTOR		EXISTING PANEL TO REMAIN
	BEAM SMOKE DETECTOR		EXISTING PANEL TO REPLACE
	DUCT SMOKE DETECTOR	SPD	NEW PANEL SURGE PROTECTION DEVICE
	RATE OF RISE HEAT DETECTOR		
	FIXED HEAT DETECTOR	LABEL	MOTOR
	FIRE ALARM STROBE LIGHT	#	NEW MOTOR SEE SCHEDULE FOR DESCRIPTION
	MAGNETIC DOOR HOLDER	PB	PULL BOX
	FIRE ALARM VOICE NOTIFICATION SPEAKER (WALL)	JB	JUNCTION BOX
	FIRE ALARM VOICE NOTIFICATION SPEAKER (CEILING)	H	HANDHAIRED
	FIRE ALARM VOICE NOTIFICATION SPEAKER (CEILING)	1	SINGLE RECEPTACLE
	FIRE ALARM VOICE NOTIFICATION SPEAKER (WALL)	2	DUPLEX RECEPTACLE
	FIRE ALARM VOICE NOTIFICATION SPEAKER (WALL)	3	DOUBLE DUPLEX RECEPTACLE
	FIRE ALARM VOICE NOTIFICATION SPEAKER (WALL)	4	SPECIAL PURPOSE RECEPTACLE
	RELAY	5	DUPLEX FLOOR RECEPTACLE
	REMOTE INDICATOR TEST SWITCH	CR	CORD REEL
	SPRINKLER FLOW SWITCH	1	TEL./DATA POWER POLE
	SPRINKLER TAMPER SWITCH	2	NON-FUSED DISCONNECT SWITCH
	FIRE ALARM ANNUNCIATOR PANEL	3	FUSED DISCONNECT SWITCH
	FIRE ALARM CONTROL PANEL	4	MOTOR STARTER
	FIRE ALARM GRAPHIC ANNUNCIATOR	5	COMBINATION STARTER
	CONTROL STATION TYPE AS DESCRIBED ON DWGS.	6	CONTACTOR
	HOUSE LIGHTING CONTROL STATION	CB	ENCLOSED CIRCUIT BREAKER
	DIMMER CONTROL OUTLET	7	EQUIPMENT CONNECTION
	AREA OF RESCUE STATION	8	EMERGENCY OFF BUTTON
	MICROPHONE JACK	TR	TRANSFORMER
	SPEAKER JACK		# DENOTES DESIGNATION REFER TO RISER DIAGRAM
	HOUSE LIGHT PANIC STATION		
	AUDITORIUM INTERCOM		
	COMBINATION CLOCK/SPEAKER	P	UTILITY POLE
	CLOCK	UT	UNDERGROUND TELEPHONE
	EXISTING TELEPHONE	UTV	OVERHEAD TELEPHONE
	TELEPHONE OUTLET	UTV	UNDERGROUND TELEVISION
	54" AFF IC - INTERCOM SOUND SYSTEM HAND SET BLANK - WALL MOUNT AT 16" AFF FLOOR TELEPHONE OUTLET	TV	OVERHEAD TELEVISION
	INTERCOM CALL SWITCH	UL	UNDERGROUND LIGHTING
	TELEVISION OUTLET	L	OVERHEAD LIGHTING
	COMPUTER OUTLET	UE	UNDERGROUND ELECTRIC
	AUDIO/VIDEO OUTLET	E	OVERHEAD ELECTRIC
	PROJECTOR MOUNTING TILE	UC	UNDERGROUND COMMUNICATIONS
		C	OVERHEAD COMMUNICATIONS

[illegible]

N	Drawn By:	Date:	Drawing Number:
	TTAE	03/28/2025	
	Project No.:		0100

279180-24002.1	G100
----------------	------



Structural Loads

A. ROOF LIVE LOADS PER BCNYS 1607.13  
MINIMUM ROOF LIVE LOAD 20 PSF

B. RAIN LOADS PER BCNYS 1611  
RAIN INTENSITY, I 2.75IN/HR  
RAIN LOAD, R 16 PSF

RAIN SURCHARGE LOAD HAS BEEN APPLIED TO AREAS WHERE PONDING OCCRS IN ACCORDANCE WITH BCNYS 1611.1

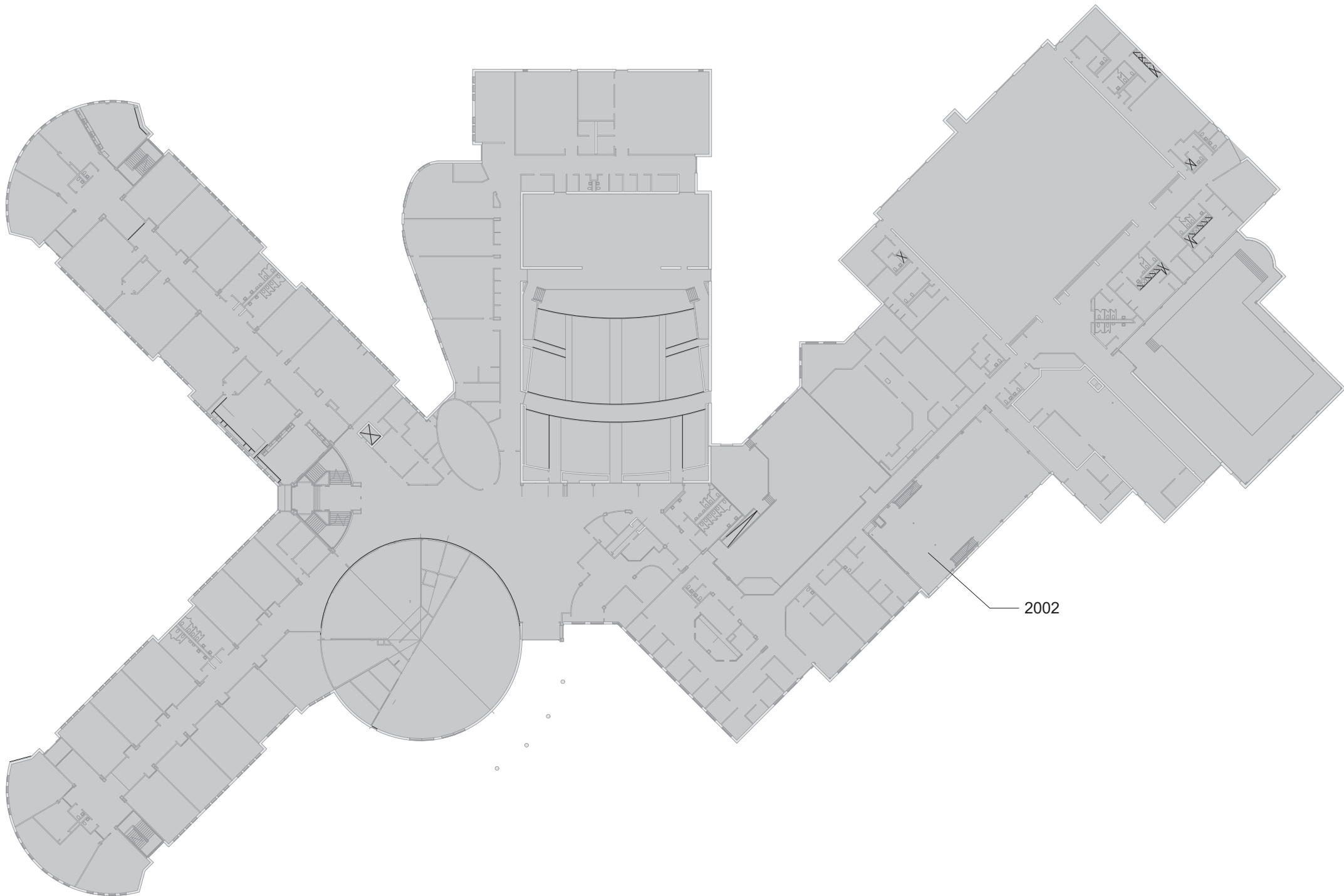
C. SNOW LOADS PER BCNYS 1608  
GROUND SNOW, P<sub>g</sub> (FIGURE 1608.2) 30 PSF  
FLAT ROOF SNOW LOAD, P<sub>f</sub> (ASCE 7) 25.2 PSF  
SNOW EXPOSURE FACTOR, C<sub>e</sub> 1.0  
THERMAL FACTOR 1.0  
SLOPE FACTOR, C 1.0  
SNOW LOAD IMPORTANCE FACTOR, I<sub>s</sub> 1.2

ADDITIONAL SNOW LOADS HAVE BEEN APPLIED TO AREAS WHERE DRIFTING OCCURS IN ACCORDANCE WITH BCNYS 1608.

D. WIND LOAD DESIGN CRITERIA PER BCNYS 1609  
BASIC DESIGN WIND SPEED (3 SECOND GUST), V 126 MPH  
ALLOWABLE STRESS DESIGN WIND SPEED, V<sub>all</sub> 97.6MPF  
RISK CATEGORY IV  
EXPOSURE CATEGORY B  
INTERNAL PRESSURE COEFFICIENT, GCP +/- 0.18

E. SEISMIC DESIGN CRITERIA PER BCNYS 1613  
RISK CATEGORY IV  
SEISMIC IMPORTANCE FACTOR, I<sub>s</sub> 1.50  
MAPED SPECTRAL RESPONSE ACCELERATION  
AT SHORT PERIODS, S<sub>s</sub> 23.3%g  
AT 1 SECOND PERIODS, S<sub>1</sub> 9.1%g  
SEISMIC DESIGN CATEGORY C

F. SPECIAL LOADS PER BCNYS 1603.1.8  
MECHANICAL EQUIPMENT DEAD LOADS  
CHILLER - 1 10000 LB  
CHILLER - 2 10000 LB



1 Vintage Floor Plan  
1/64" = 1'-0"

Code Compliance Review

**PROJECT LOCATION:**  
101 MATTEAWAN RD, BEACON, NY 12508  
BOUNDED BY MATTEAWAN RD TO THE SOUTH

**PROJECT DESCRIPTION:**  
THIS PROJECT INCLUDES RENOVATION OF APPROXIMATELY 3,752 SF OF MECHANICAL SPACE ON THE FIRST FLOOR OF BEACON HIGH SCHOOL. EXISTING EXTERIOR CHILLERS, INTERIOR BOILERS, AND PUMPS ARE AT THE END OF THEIR USEFUL LIFE. THESE WILL BE REPLACED WITH NEW AIR COOLED CHILLERS, HIGH EFFICIENCY BOILERS, PUMPS, AND ASSOCIATED PIPING AND ELECTRICAL FEEDS. EXTERIOR BURIED PIPING TO BE DISCONNECTED AND ABANDONED IN PLACE. EXISTING FENCING AND EXTERIOR STRUCTURAL CONCRETE SLAB TO BE EXTENDED TO SUPPORT NEW LARGER CHILLERS.

WORK GENERALLY CONSISTS OF THE FOLLOWING:  
ALTERATIONS - LEVEL 2

- REMOVE THE DECOMMISSIONED UNIVERSAL BOILER WORKS, BOILER AND THE SMITH BOILER (AERCO BOILERS TO REMAIN.)
- REPLACE WITH (2) TWO 2-MILLION BTU HIGH EFFICIENCY BOILERS.
- REMOVE EXISTING PUMPS AND PROVIDE NEW ENERGY-EFFICIENT LAYOUT AND ASSOCIATED PUMPS.
- REPLACE 100-TON AND 400-TON CHILLERS WITH (2) TWO 175-TON AIR COOLED CHILLERS IN EXISTING MECHANICAL YARD.
- REMOVE OUTDOOR HEAT REJECTION EQUIPMENT (ONE FLUID COOLER AND TWO COOLING TOWERS) AND ASSOCIATED CONDENSER PIPING AND PUMPS.
- DISCONNECT AND ABANDON EXISTING BURIED PIPING.
- REMOVE EXISTING PUMPS AND PROVIDE NEW ENERGY-EFFICIENT LAYOUT AND ASSOCIATED PUMPS.
- ASSOCIATED ELECTRICAL
- NEW STRUCTURAL SLAB TO SUPPORT CHILLERS
- EXTENSION OF EXISTING SITE FENCING

**APPLICABLE CODES AND STANDARDS:**  
BASED ON THE NEW YORK STATE UNIFORM FIRE PREVENTION AND BUILDING CODE INCLUDING APPLICABLE 2018 ICC CODES AND 2020 BUILDING CODES OF NYS, AND ICC A117.1-2017 STANDARD FOR ACCESSIBLE AND USABLE BUILDINGS AND FACILITIES AND MANUAL OF PLANNING STANDARDS 2022.

REFER TO PROJECT MANUAL FOR REQUIREMENTS STATED IN 'NYCRR 155 REGULATIONS OF THE COMMISSIONER OF EDUCATION'.

**BUILDING DATA:**

BUILDING: BEACON HIGH SCHOOL  
101 MATTEAWAN RD,  
BEACON, NY 12508

DESCRIPTION: TWO STORY MASONRY AND REINFORCED CONCRETE BUILDING.

YEAR BUILT: 2002 COMPLETION

BUILDING AREA: 1ST FLOOR 152,300 SQFT  
2ND FLOOR 55,700 SQFT  
TOTAL GROSS AREA= 208,000 SQFT

**CODE DATA SUMMARY:**

USE GROUP: E : EDUCATION

CONSTRUCTION TYPE -

EXISTING: IIB

FIRE SAFETY: NOT SPRINKLERED

WORK AREA:	LOCATION	AREA	% OF TOTAL
	1ST FLOOR	3,752 SQFT	2.4%

**PATH OF CODE COMPLIANCE:**  
2018 IEBC CODES AND 2020 EXISTING BUILDING CODE OF NYS  
301.1.2 WORK AREA COMPLIANCE METHOD

CHAPTER 5 - CLASSIFICATION OF WORK  
504 ALTERATION - LEVEL 2 (CHAPTER 8)

UL DESIGN NUMBERS:

BEAMS UL# S721  
BAR JOISTS UL# D902  
COMPOSITE SLAB UL# D902  
COLUMNS UL# X528  
1 HR. STUD PARTITIONS UL# U465  
1 HR. BLOCK PARTITIONS UL# U905  
2 HR. BLOCK PARTITIONS UL# U905

NOTES:  
1. RATING PROVIDED BY 4" SOLID CONCRETE MASONRY UNITS - DETERMINATION OF EQUIVALENT THICKNESS OF CMU REQUIRED IS BASED ON SECTION 721 PRESCRIPTIVE FIRE RESISTANCE, TABLE 721.1 (2) RATED FIRE RESISTANCE PERIODS FOR VARIOUS WALLS AND PARTITIONS, ITEM NUMBER 3-1.2

2. ALL CMU CONSTRUCTION SHALL MEET FIRE RESISTANCE REQUIREMENTS INDICATED IN CHART OF SAME NAME ABOVE. BLOCK TYPE AS REQUIRED TO COMPLY WITH UL DESIGN NUMBERS AND AS REQUIRED TO COMPLY WITH RATED WALLS INDICATED ON CODE COMPLIANCE DRAWINGS. PROVIDE MINIMUM 4" SOLID CMU AT SUCH LOCATIONS REGARDLESS IF NOTED AS SUCH ON PLAN DETAILS.

RESCUE LABEL / SIGNAGE NOTES:

1. REFER TO PLANS FOR RESCUE WINDOW LOCATIONS.

General Code Notes

A. REFER TO CODE COMPLIANCE DRAWINGS FOR ADDITIONAL CODE COMPLIANCE INFORMATION.

B. AT AREAS OF PROJECT WORK, COMPLETELY SEAL ALL PENETRATIONS REQUIRED TO COMPLY WITH FIRE RESISTANCE RATINGS IDENTIFIED ON FG351 AND FG352. REGARDLESS IF WALL IS NEW OR EXISTING, TYPICAL UNLESS NOTED OTHERWISE.

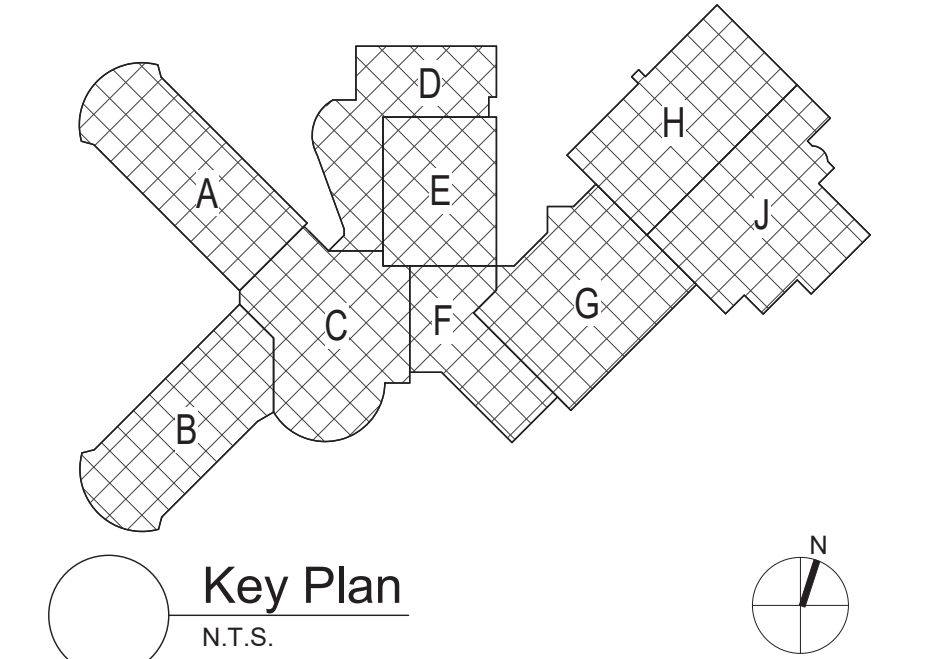
C. ALL CMU CONSTRUCTION SHALL MEET FIRE RESISTANCE REQUIREMENTS INDICATED. PROVIDED BLOCK TYPE AS REQUIRED TO COMPLY WITH UL DESIGN NUMBERS AND WALL RATINGS INDICATED, REGARDLESS IF NOTED AS SUCH ON PLAN DETAILS.

Legend

ALL WALLS, INCLUDING CORRIDOR WALLS, EXTEND TO THE ROOF DECK OR FLOOR DECK ABOVE UNLESS NOTED OTHERWISE.

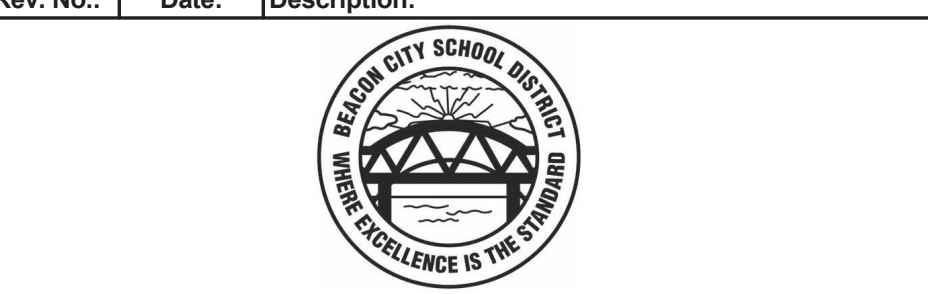
2-HOUR FIRE WALL  
2-HOUR FIRE BARRIER  
1-HOUR FIRE BARRIER  
1-HOUR FIRE PARTITION  
SMOKE PARTITION

EXISTING FIRE EXTINGUISHER LOCATION  
AUTOMATED EXTERNAL DEFIBRILLATOR (AED)  
RESCUE WINDOW  
ALTERATION LEVEL 2 WORK AREA  
FIRE HOSE CABINET



S.E.D. Control No. 13-02-00-01-0-020-013

Rev. No.:	Date:	Description:



complex world | CLEAR SOLUTIONS

Tetra Tech Engineers, Architects & Landscape Architects, P.C.

BID SET



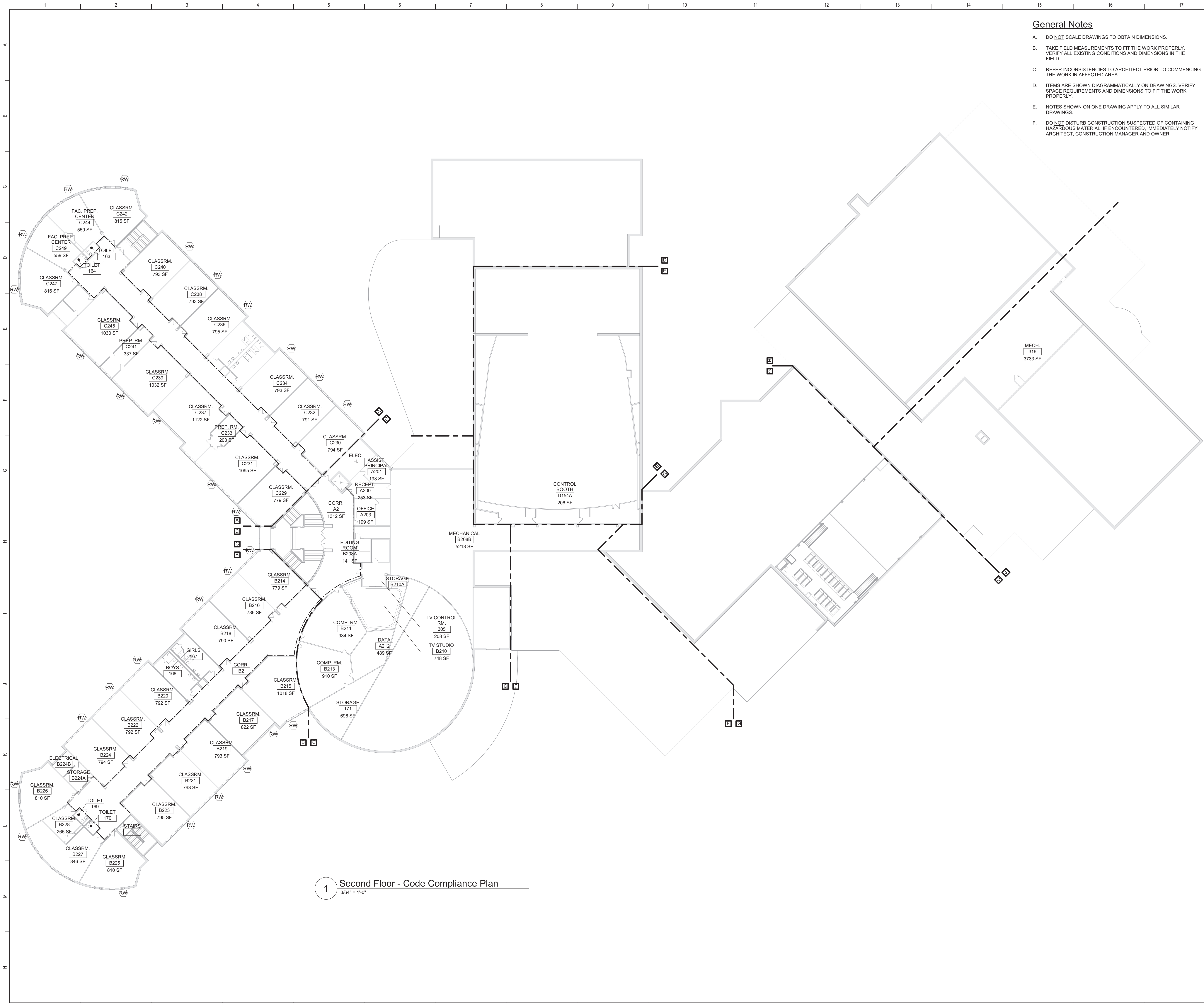
Beacon City School District  
Beacon, NY

Reconstruction to:  
Beacon High School

Code Compliance Review

Drawn By: ACB	Date: 03/28/2025	Drawing Number:
Project No.: 279180-24002.1	FG350	





General Notes

- A. DO NOT SCALE DRAWINGS TO OBTAIN DIMENSIONS.
- B. TAKE FIELD MEASUREMENTS TO FIT THE WORK PROPERLY. VERIFY ALL EXISTING CONDITIONS AND DIMENSIONS IN THE FIELD.
- C. REFER INCONSISTENCIES TO ARCHITECT PRIOR TO COMMENCING THE WORK IN AFFECTED AREA.
- D. ITEMS ARE SHOWN DIAGRAMMATICALLY ON DRAWINGS. VERIFY SPACE REQUIREMENTS AND DIMENSIONS TO FIT THE WORK PROPERLY.
- E. NOTES SHOWN ON ONE DRAWING APPLY TO ALL SIMILAR DRAWINGS.
- F. DO NOT DISTURB CONSTRUCTION SUSPECTED OF CONTAINING HAZARDOUS MATERIAL. IF ENCOUNTERED, IMMEDIATELY NOTIFY ARCHITECT, CONSTRUCTION MANAGER AND OWNER.

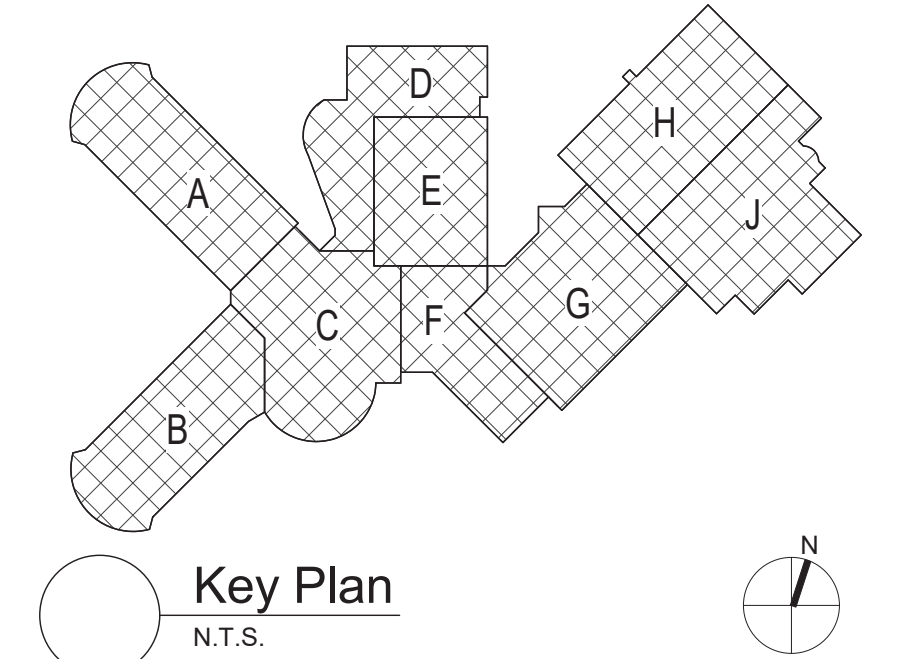
General Code Notes

- A. REFER TO CODE COMPLIANCE DRAWINGS FOR ADDITIONAL CODE COMPLIANCE INFORMATION.
- B. AT AREAS OF PROJECT WORK, COMPLETELY SEAL ALL PENETRATIONS REQUIRED TO COMPLY WITH FIRE RESISTANCE RATINGS IDENTIFIED ON FG351 AND FG352, REGARDLESS IF WALL IS NEW OR EXISTING. TYPICAL UNLESS NOTED OTHERWISE.
- C. ALL CMU CONSTRUCTION SHALL MEET FIRE RESISTANCE REQUIREMENTS INDICATED. PROVIDED BLOCK TYPE AS REQUIRED TO COMPLY WITH UL DESIGN NUMBERS AND WALL RATINGS INDICATED, REGARDLESS IF NOTED AS SUCH ON PLAN DETAILS.

Legend

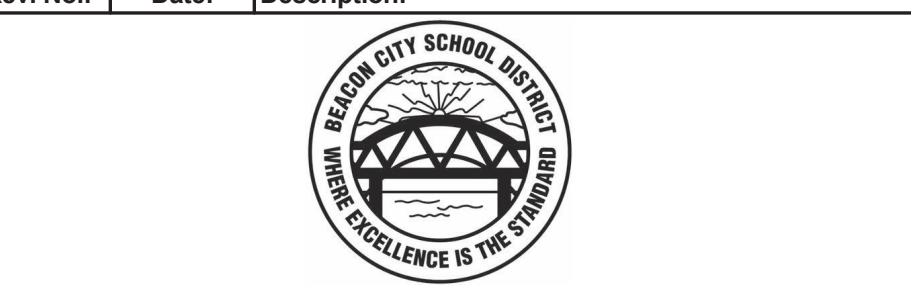
ALL WALLS, INCLUDING CORRIDOR WALLS, EXTEND TO THE ROOF DECK OR FLOOR DECK ABOVE UNLESS NOTED OTHERWISE.

- 2-HOUR FIRE WALL
- 2-HOUR FIRE BARRIER
- 1-HOUR FIRE BARRIER
- 1-HOUR FIRE PARTITION
- SMOKE PARTITION
- EXISTING FIRE EXTINGUISHER LOCATION
- AUTOMATED EXTERNAL DEFIBRILLATOR (AED)
- RESCUE WINDOW
- ALTERATION LEVEL 2 WORK AREA
- FIRE HOSE CABINET



S.E.D. Control No. 13-02-00-01-0-020-013

Rev. No.	Date	Description



complex world | CLEAR SOLUTIONS

Tetra Tech Engineers, Architects & Landscape Architects, P.C.

BID SET



Beacon City School District  
Beacon, NY

Reconstruction to:  
Beacon High School

Code Compliance 2nd Floor Plan

Drawn By: ACB	Date: 03/28/2025	Drawing Number:
Project No.: 279180-24002.1	FG352	