

MIXING VALVE SCHEDULE										
TAG	LOCATION	SERVICE	MIN FLOW (GPM)	DESIGN FLOW (GPM)	DESIGN FLOW DELTA-P PSI	HOT WATER TEMP.	COLD WATER TEMP	MIXED WATER TEMP	BASIS OF DESIGN	REMARKS
TMV-1	BELOW LAVATORY FAUCET	SEE PLANS	0.5	5	5	140°F	50°F	110°F	CHICAGO FAUCET 131-ABNF	1, 2, 3, 4
NOTES: 1. COLD WATER TEMPERATURE WILL VARY. 2. LEAD FREE. 3. MIXING VALVE SHALL BE ASSE 1017 COMPLIANT. 4. MIXING VALVE SHALL BE ASSE 1070 COMPLIANT.										

EXPANSION TANK SCHEDULE										
TAG	TYPE	CAPACITY (GAL)	MIN TEMP (DEG. F)	MAX TEMP (DEG. F)	MIN. PRES (PSIG)	MAX PRES (PSIG)	DIA (IN)	HEIGHT (IN)	BASIS OF DESIGN MFG. AND MODEL	REMARKS
ET-1	VERT ASME DIAPHRAGM	2.1	50	120	20	125	10 "	10"	THERM-X-TROL ST-5-C	DOMESTIC HOT WATER

PIPE INSULATION THICKNESS								
FLUID OPERATING TEMPERATURE RANGE AND USAGE (°F)	INSULATION CONDUCTIVITY		NOMINAL PIPE OR TUBE SIZE (INCHES)					REMARKS
	CONDUCTIVITY BTU-IN/(H*FT²*°F)	MEAN RATING TEMPERATURE (°F)	<1	1 TO 1-1/2	1-1/2 TO <4	4 TO <8	≥8	
105 - 140 DOMESTIC HOT WATER	0.21-0.28	100	1	1	1.5	1.5	1.5	
40-60 DOMESTIC COLD WATER	0.21-0.27	75	0.5	0.5	1	1	1	
1. FOR OUTDOOR PIPING PROVIDE DOUBLE THE INSULATION THICKNESS LISTED AND WEATHER PROOF JACKET (ALUMAGUARD). 2. FOR PIPING SMALLER THAN 1-1/2" AND LOCATED IN PARTITIONS WITHIN CONDITIONED SPACES, REDUCTION OF THESE THICKNESS BY 1 INCH SHALL BE PERMITTED, REVIEW ENERGY CONSERVATION CODE. 3. FOR PIPING IN MECHANICAL ROOMS, PROVIDE ALUMINUM INSULATION JACKET FOR ALL PIPING FROM FLOOR LEVEL TO 10" ABOVE THE FLOOR. 4. FOR CHILLED WATER AND CHILLED GLYCOL SYSTEMS PROVIDE CONTINUOUS INSULATION AT VALVES. 4a. FOR CHILLED WATER AND CHILLED GLYCOL SYSTEMS, PROVIDE REUSABLE VALVE WRAPS COVERS (NOSWEAT REUSABLE VALVE WRAPS.) 5. FOR HOT WATER AND GLYCOL SYSTEMS, PROVIDE REUSABLE VALVE WRAPS COVERS. (NOSWEAT REUSABLE VALVE WRAPS.)								

PLUMBING FIXTURE SCHEDULE									
TAG	FIXTURE TYPE	BASIS OF DESIGN MANUFACTURER	MODEL NO.	MAXIMUM FIXTURE FLOW RATES	CONNECTION SIZE				REMARKS
					CW	HW	W	V	
WC-1	WATER CLOSET (ADA HEIGHT), WALL MOUNTED	TOTO	GHE20313	1.28 GALLONS PER FLUSH	1/2"	-	3"	2"	2. WALL MOUNTED W/ CARRIER, TOTO TET6LA, 1.28 GPF TURBINE/CAPACITOR HYDROELECTRIC POWERED FLUSH VALVE, 1.5" TOP SPUD, ELONGATED BOWL, ASME A112.19.15" RIM HEIGHT, HEAVY DUTY OPEN FRONT SEAT, (2)
LAV-1	WALL-HUNG (ADA HEIGHT) LAVATORY	KOHLER	K02005	0.5 GPM @ 60 PSI	1/2"	1/2"	1 1/2"	1 1/2"	1, 3, 4, 5. PROVIDE MANUAL ADA FAUCET, LEVER HANDLE ( KOHKER K-15243-4RA). 0.5 GPM, ADA TRIM-INSULATED, ADA/ANSI-A117.1. (1) (3) (4)
KSK-1	SINGLE BOWL SINK	ELKAY	LR2522	2.2 GPM @ 60 PSI	1/2"	1/2"	1 1/2"	1 1/2"	PROVIDE 3 HOLE DELTA 400-DST FAUCET WITH SPRAY, SUPPLIES, P-TRAP, BASKET STRAINER
KSK-2	SINGLE BOWL SINK	ELKAY	LR2522	2.2 GPM @ 60 PSI	1/2"	1/2"	1 1/2"	1 1/2"	PROVIDE 3 HOLE DELTA 400-DST FAUCET WITH SPRAY, SUPPLIES, P-TRAP, BASKET STRAINER
KSK-3	SINGLE BOWL SINK	ELKAY	LR2522	2.2 GPM @ 60 PSI	1/2"	1/2"	1 1/2"	1 1/2"	REPLACE EXISTING DROP-IN SINK, PROVIDE 3 HOLE DELTA 400-DST FAUCET WITH SPRAY, SUPPLIES, P-TRAP, BASKET STRAINER
FD-1	FLOOR DRAIN	JR SMITH	2005	N/A	-	-	3"	1 /12"	DURA-COATED CAST IRON BODY, POLISHED NICKEL BRONZE STRAINER 6" DIA., HEEL PROOF & ADJUSTABLE, LIGHT DUTY, WITRAP SEAL PRIME DEVICE STABILIZER RING
DPCO-1	DECK PLATE CLEANOUT	JR SMITH	4031	N/A	-	-	VARIES	-	ROUND, POLISHED BRONZE NON-SLIP COVER, DIAMOND PATTERN.
EW-1	ADA WATER COOLER WITH BOTTLE FILER	ELKAY	LZSTL8WSP	N/A	1/2"	-	2"	-	DUAL FOUNTAIN UNIT W/BOTTLE FILLER, ADA, STAINLESS STEEL W/ AIR COOLED CHILLER, NSF/ANSI STD 53 & 42, 7.5 GPH @ 50°F, STANDARD HEIGHT X ADA. PROVIDE ACCESSORY APRON CANE MODEL 98324C, STAINLESS STEEL CONSTRUCTION TO MAINTAIN THE MANDATORY ADA 27" FLOOR TO UNDERSIDE REQUIREMENT.
MSB-1	MOP SINK	FIAT	TSB-100	2.2 GPM @ 60 PSI	3/4"	3/4"	3"	2"	PROVIDE FIAT 830-AA FAUCET WITH VACUUM BREAKER, PAIL HOOK AND 3/4" HOSE THREADED SPOUT
RD-1	ROOF DRAIN AND OVERFLOW DRAIN	JR SMITH	1800	N/A	-	-	SEE PLAN	-	STANDARD AND EMERGENCY ROOF DRAIN, LARGE LOW PROFILE POLYETHYLENE DOME, CAST IRON BODIES, COMBINED FLASHING CLAMP AND GRAVEL STOP AND UNDERDECK CLAMP, 3 1/2" HIGH INTERNAL WATER DAM STANDPIPE
DS-1	OVERFLOW DRAIN SPOUT	JR SMITH	1775	N/A	-	-	SEE PLAN	-	FLAP COVER AT ABOVE GRADE OUTLETS, SIZE PER DRAWINGS, HINGED PERFORATED COVER, STAINLESS STEEL FINISH.
GCO-1	GRADE CLEANOUT	JR SMITH	4250	N/A	-	-	4"	-	FLOOR CLEANOUT FOR UNFINISHED AREA, ROUND FLANGED HOUSING WITH HEAVY DUTY CAST IRON COVER
1. PROVIDE FAUCET, C/W/H/W, STOPS AND WASTE TRIM. MEET ANS/ADA REQUIREMENTS AT ADA FIXTURES. 2. ERGO HEIGHT ADA ELONGATED TOTE WITH FLUSH/WATE PRESSURE VESSEL WITH EXTRA LARGE DUAL FED SIPHON JETS FOR HIGH POWER BOWL CLEANING, PROVIDE TOILET SEAT (G0099216). 3. LAVATORY'S SHALL HAVE A MANUAL FAUCET SETS, 4" CC. 4. LAVATORY SHALL HAVE AN ADJUSTABLE THERMOSTATIC SETTING FOR 120°F WATER IN - 105°F WATER OUT ON THE FAUCET DISCHARGE. 5. WITH GRIDDED DRAIN OFFSET TAIL PIECE, PIPING SAFETY COVERS.									

FITTINGS FOR CHANGE IN DIRECTION			
TYPE OF FITTING PATTERN	CHANGE IN DIRECTION		
	HORIZONTAL TO VERTICAL	VERTICAL TO HORIZONTAL	HORIZONTAL TO HORIZONTAL
SIXTEENTH BEND	X	X	X
EIGHTH BEND	X	X	X
SIXTH BEND	X	X	X
QUARTER BEND	X	X(a)	X(a)
SHORT SWEEP	X	X(a,b)	X(a,b)
LONG SWEEP	X	X	X
SANITARY TEE	X	-	-
WYE	X	X	X
COMBINATION WYE AND EIGHTH BEND	X	X	X
a. THE FITTING SHALL ONLY BE PERMITTED FOR A 2-INCH OR SMALLER FIXTURE DRAIN. b. THREE INCHES OR LARGER.			

IN-LINE CIRCULATOR PUMP SCHEDULE										
TAG	SERVING	TYPE	CAPACITY (GPM)	HEAD (FT)	ELECTRICAL			RPM	BASIS OF DESIGN	REMARKS
					VOLTS	PHASE	HP			
RP-1	WH-1	CARTRIDGE	3	30	120	1	1/6	3250	TACO 0013-MSSFT-IFC	1, 2, 3, 4, 5, 6
1. 3-SPEED STAINLESS STEEL CONSTRUCTION. 2. PROVIDE WITH DIGITAL TIMER TACO 265-3 OR EQUAL. 3. CIRCULATING HOT WATER PUMP 3/4" CONNECTIONS. 4. PUMP RUNS CONTINUOUSLY DURING OCCUPIED HOURS. 5. PROVIDE WITH ISOLATION VALVES. 6. PROVIDE PIPING FLANGES AS BRONZE OR STAINLESS STEEL										

ELECTRIC WATER HEATER SCHEDULE									
TAG	LOCATION	CAPACITY (WATTS)	SIZE (GAL)	OPERATING TEMP., (DEG. F)	RECOVERY (GPH AT 100 DEG. F)	ELECTRICAL		BASIS OF DESIGN MANUFACTURER & MODEL	REMARKS
						VOLTS	PHASE		
WH-3	1ST FLOOR 1-08 UTILITY RM	1440	6	140	N/A	120	1	EEMAX MINI TANK EMT4	2, 3, 4
1. PROVIDE WATER HEATER WITH DIELECTRIC HEAT TRAPS NIPPLES ON THE HOT AND COLD WATER CONNECTIONS. 2. INSTALL PER MANUFACTURER INSTALLATION INSTRUCTIONS. 3. MIXING VALVE SHALL MEET ASSE 1070, NO ADDITIONAL MIXING VALVE REQUIRED. 4. MOUNT ON WALL INSIDE CABINET ADJACENT TO SINK, PIPE RELIEF VALVE DISCHARGE TO FLOOR.									

- GENERAL NOTES:
- PITCH ALL WATER LINES TO DRAIN, PROVIDE SHUTOFF VALVES ON ALL DOMESTIC COLD AND HOT WATER SUPPLY PIPING TO INDIVIDUAL FIXTURES.
  - PIPING SHALL RUN CONCEALED IN ALL AREAS WITH THE EXCEPTION OF MECHANICAL ROOMS OR WHERE NO CEILING EXISTS.
  - ALL DOMESTIC WATER PIPING PRESSURE TESTS SHALL BE CONDUCTED PRIOR TO INSTALLATION OF PIPING INSULATION.
  - INSTALL DIELECTRIC CONNECTORS BETWEEN DISSIMILAR MATERIALS.
  - INSTALL HORIZONTAL RUNS OF DOMESTIC COLD AND HOT WATER PIPE AS HIGH AS POSSIBLE, PROVIDE DRAW-OFFS AT ALL LOW POINTS WITH 3/4" HOSE VALVE AND CAP CONNECTION.
  - REFER TO EQUIPMENT SCHEDULES, DETAILS AND RISER DIAGRAMS FOR SIZES NOT SHOWN ON FLOOR PLANS.
  - PROVIDE CLEANOUTS AT THE BASE OF ALL SANITARY AND STORM RISERS.
  - PROVIDE DOMESTIC CW, HW ISOLATION VALVES TO ALL BATHROOM GROUP FIXTURES.
  - PROVIDE CUTTING & PATCHING OF EXISTING STRUCTURAL REINFORCED FLOOR SLAB AT GROUND LEVEL UNDER SLAB PIPING SHALL BE SET AT A SLOPE AND PITCH OF 1/8" PER FT. MINIMUM AND SUPPORTED TO PROVIDE FOR PATCHING WORK.
  - CLEAN AND VELOCITY FLUSH EXISTING BELOW SLAB SANITARY PIPING ON GROUND FLOOR SCHEDULED TO REMAIN IN SERVICE. PROVIDE ADEQUATE FLOWS TO FLUSH PIPING AT 1/2 FULL CAPACITY MINIMUM.
  - VERTICALLY SUPPORT ALL RISERS AND STACKS AT EACH FLOOR AND SECURE TO WALLS PER SPECIFIED SPACING.
  - ALL OPERATING VALVES, BALANCING VALVES AND WATER HAMMER ARRESTORS SHALL BE PLACED WHERE ACCESSIBLE AND MAINTAINABLE WITHIN CEILINGS AND CHASES.
  - CONFIRM WALL AND FLOOR CONDITIONS WITH FINISHES AND ACCOMMODATE PLUMBING FIXTURE PLACEMENTS WITH TRIM.
  - LAVATORIES AND KITCHEN SINKS SHALL BE PROVIDED WITH A MIXING VALVE TO DELIVER 110°F HOT WATER.

LEGEND & ABBREVIATIONS	
	PIPING OR EQUIPMENT REMOVALS
	ELBOW - UP
	ELBOW - DN
	BRANCH - TOP OF PIPE
	BRANCH - BOTTOM OF PIPE
	CAP
	UNION
	BALL VALVE (TYPICAL)
	SWING CHECK VALVE
	PRESSURE REDUCING VALVE
	PRESSURE GAUGE
	STRAINER
	DECK PLATE CLEANOUT
	FLOOR DRAIN
	COLD WATER PIPING
	HOT WATER PIPING
	HOT WATER RECIRC. PIPING
	BELOW SLAB SANITARY PIPING
	ABOVE SLAB SANITARY PIPING
	SANITARY VENT PIPING
	STORM PIPING
	REMOVAL POINT
	CONNECTION POINT
	KEYED NOTE
	KEYED NOTE
	ABOVE FINISH FLOOR
	ABOVE FINISHED GRADE
	CLEAN OUT
	CONTINUATION
	COLD WATER
	DOMESTIC COLD WATER
	DETAIL
	DRINKING FOUNTAIN
	DOWN
	DRAWING
	FLOOR CLEANOUT
	DOWN SPOUT
	ELECTRICAL CONTRACTOR
	EMERGENCY EYEWASH STATION
	ELECTRIC WATER HEATER
	ELECTRIC WATER COOLER
	EXISTING
	FLOOR DRAIN
	FROST FREE HOSE BIBB
	GAS
	HOSE BIB
	HOT WATER
	HOT WATER RECIRCULATING
	INVERT ELEVATION
	LAVATORY
	ROOF DRAIN
	CIRCULATION PUMP
	ROOFTOP UNIT
	ROOF LEADER
	SANITARY
	STORM
	THROUGH
	TEMPERATURE AND PRESSURE RELIEF VALVE
	VENT THRU ROOF
	WATER CLOSET
	WATER HEATER
	WALL CLEAN OUT
	WATER HAMMER ARRESTOR

BUTLER  
ROWLAND  
MAYS  
ARCHITECTS, LLP

57 West High Street  
Ballston Spa  
New York 12020

P: 518-885-1255  
F: 518-885-1266  
www.brmarchitects.com

Additions &  
Renovations

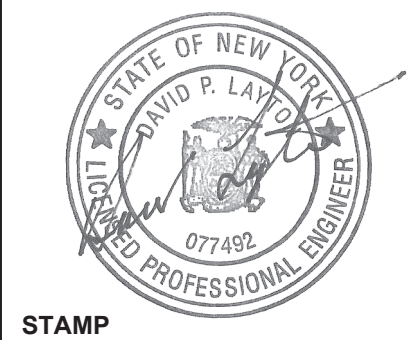
for the  
Marlboro  
Free Library

1251 Rte 9W  
Marlboro, NY 12542

PROJECT



CONSULTANT



STAMP

CALLED NORTH

DWN. BY: RW  
SCALE: AS SHOWN  
JOB NO.: 23-46-06  
DATE: 05/20/25

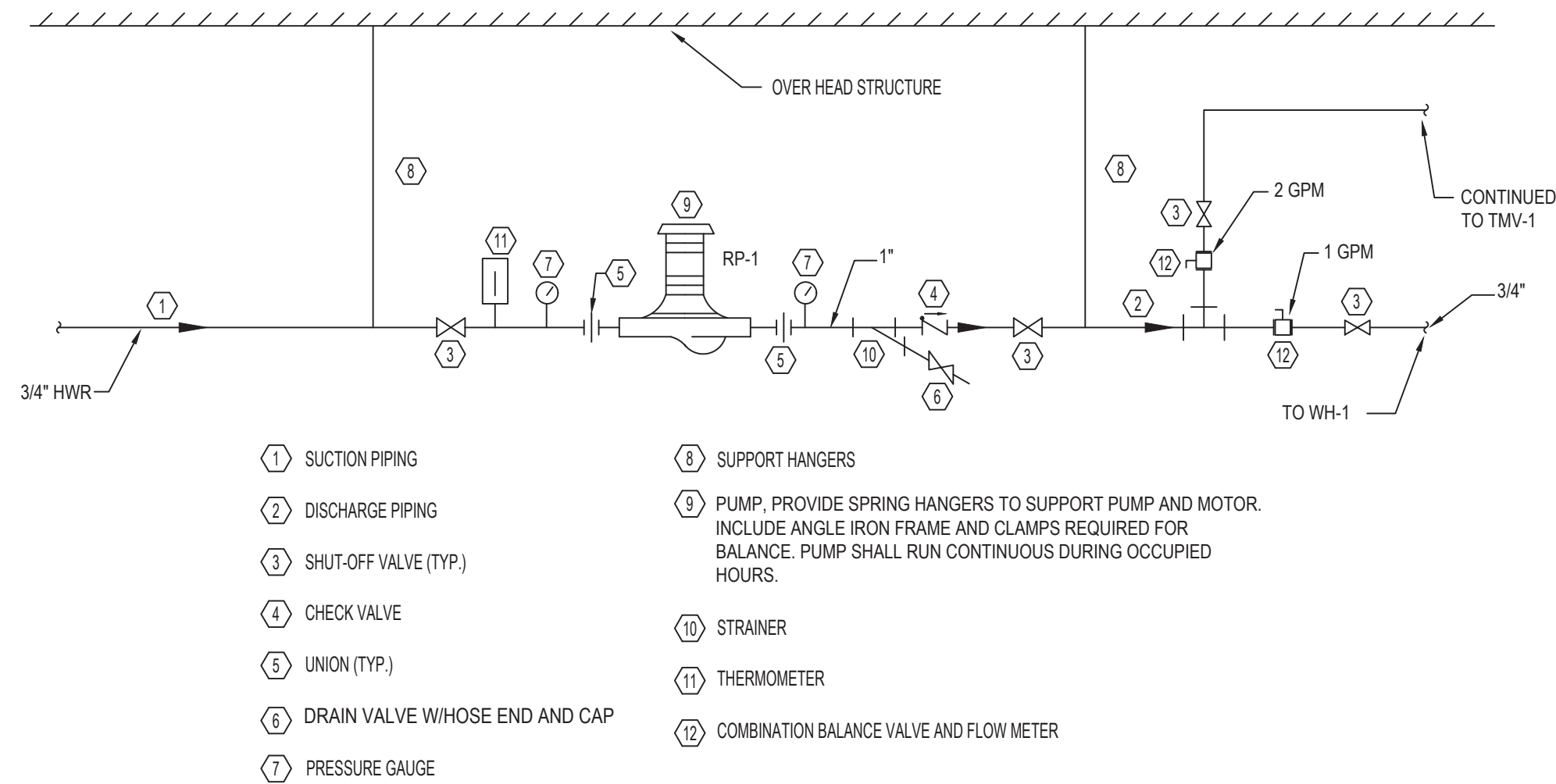
LEGEND,  
SYMBOLS AND  
DETAILS

TITLE

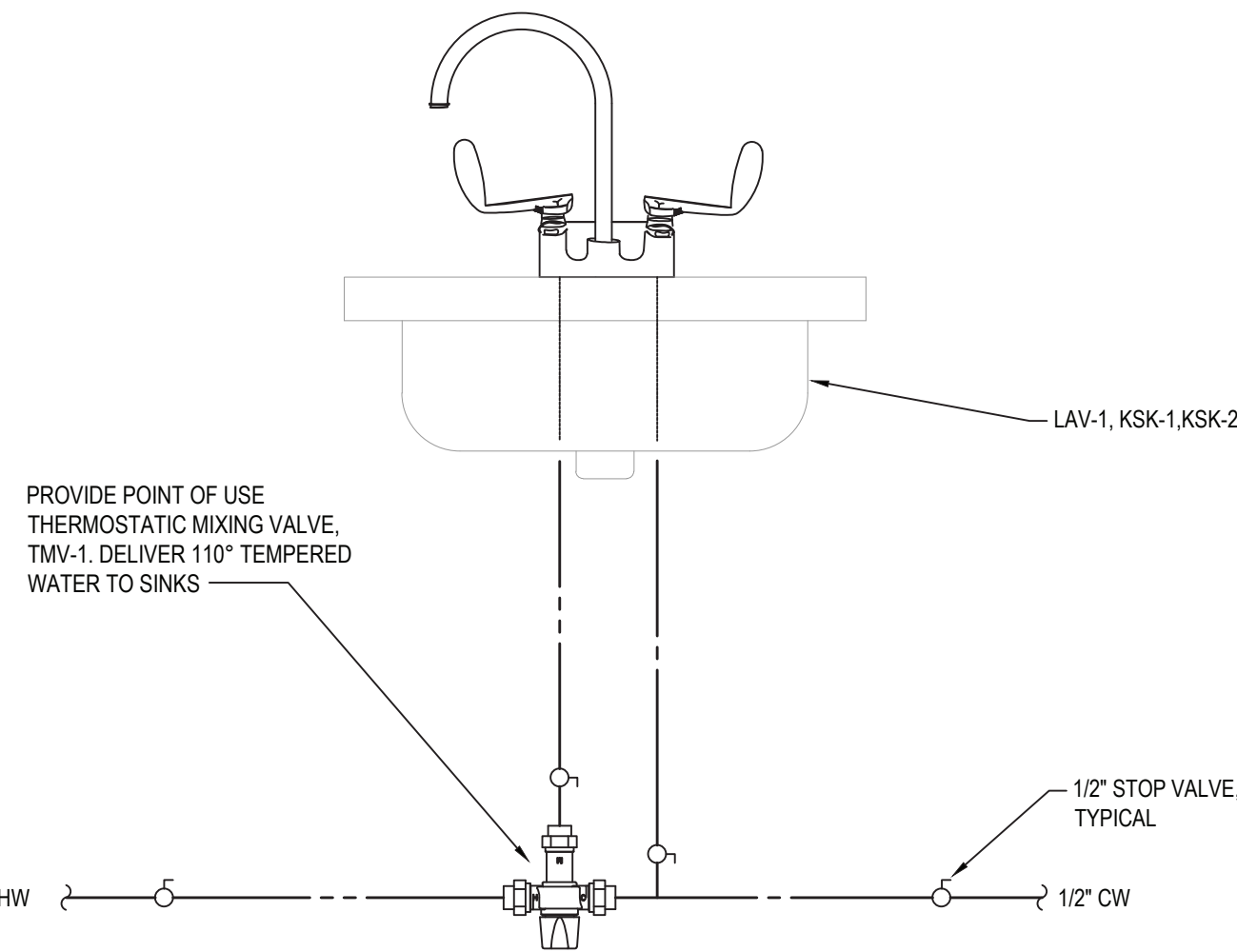
P001

DWG. NO.

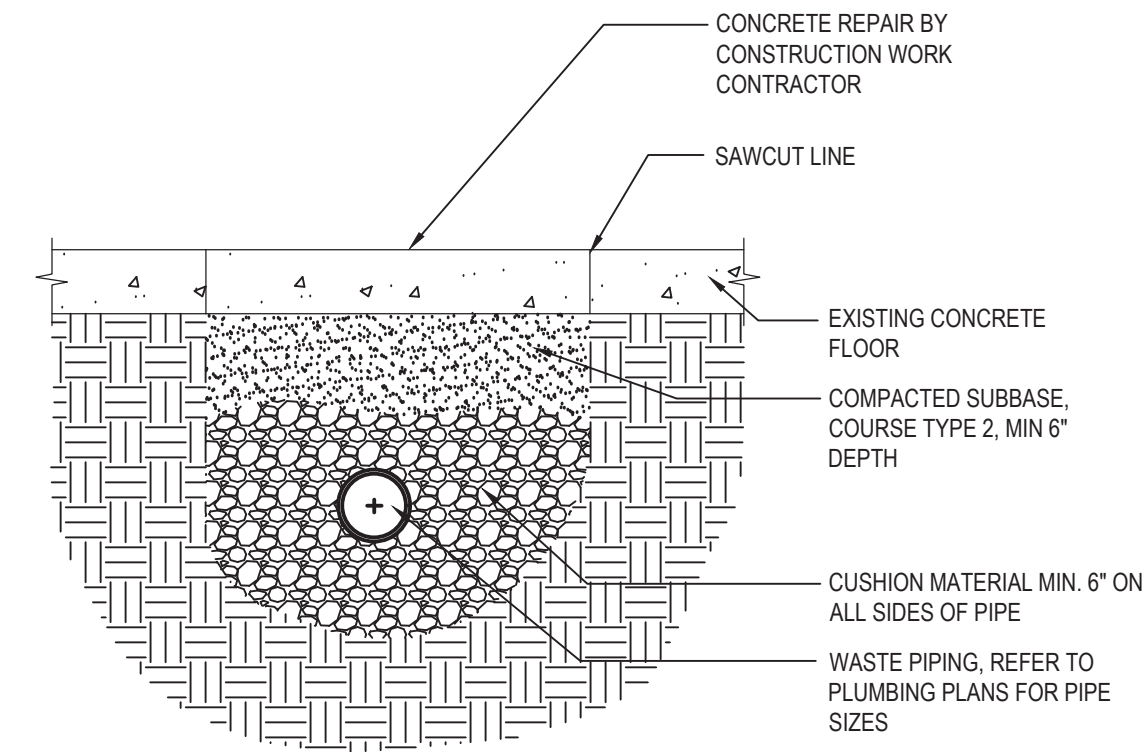




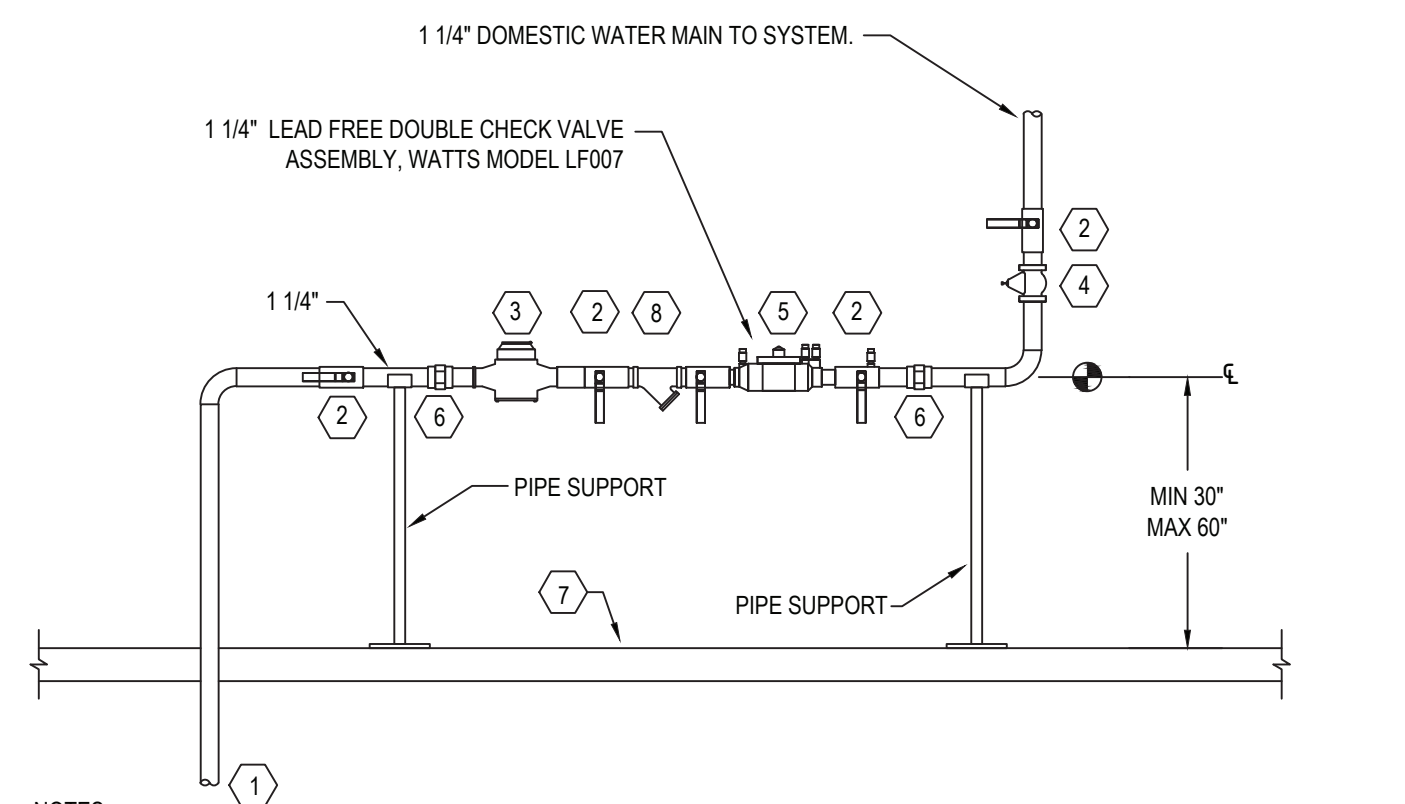
1 **INLINE PUMP DETAIL**  
P-002 SCALE: N.T.S.



2 **LAVATORY/SINK MIXING VALVE DETAIL**  
P-002 SCALE: N.T.S.

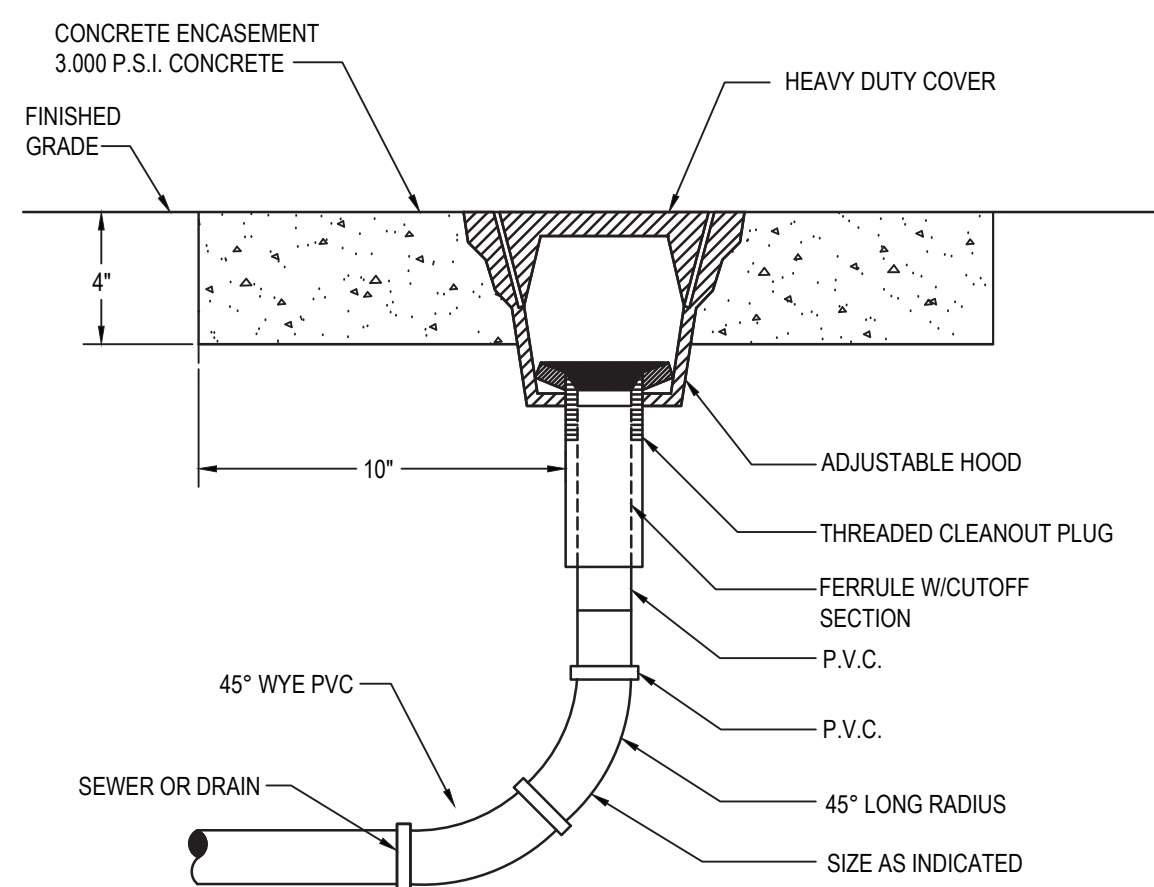


3 **PIPE TRENCH DETAIL**  
P-002 SCALE: N.T.S.

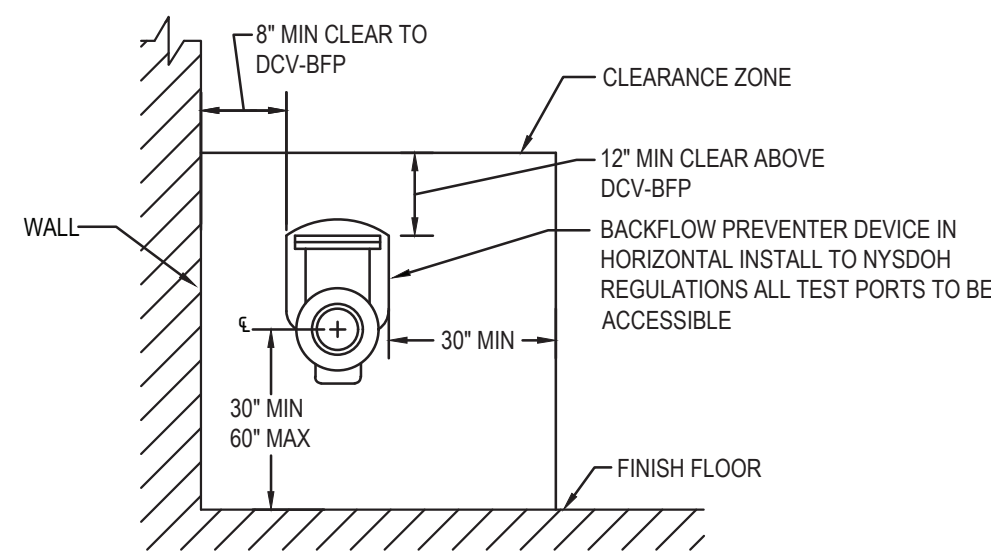


- NOTES:**
- DEVICE CENTER LINE TO BE 30" TO 60" ABOVE FINISHED FLOOR.
  - THERE WILL BE A MINIMUM CLEARANCE OF 12" ABOVE UNIT.
  - THERE WILL BE A MINIMUM OF 30" IN FRONT OF UNIT.
  - THERE WILL BE A MINIMUM OF 8" OFF BACK SIDE OF UNIT.
- | ITEM | DESCRIPTION                          |
|------|--------------------------------------|
| 1    | INCOMING 1 1/4" WATER SERVICE        |
| 2    | BALL VALVE                           |
| 3    | DOMESTIC WATER METER.                |
| 4    | WATER PRESSURE REDUCING VALVE        |
| 5    | DOUBLE CHECK VALVE WATTS MODEL LF007 |
| 6    | UNION                                |
| 7    | FINISHED FLOOR                       |
| 8    | STRAINER                             |

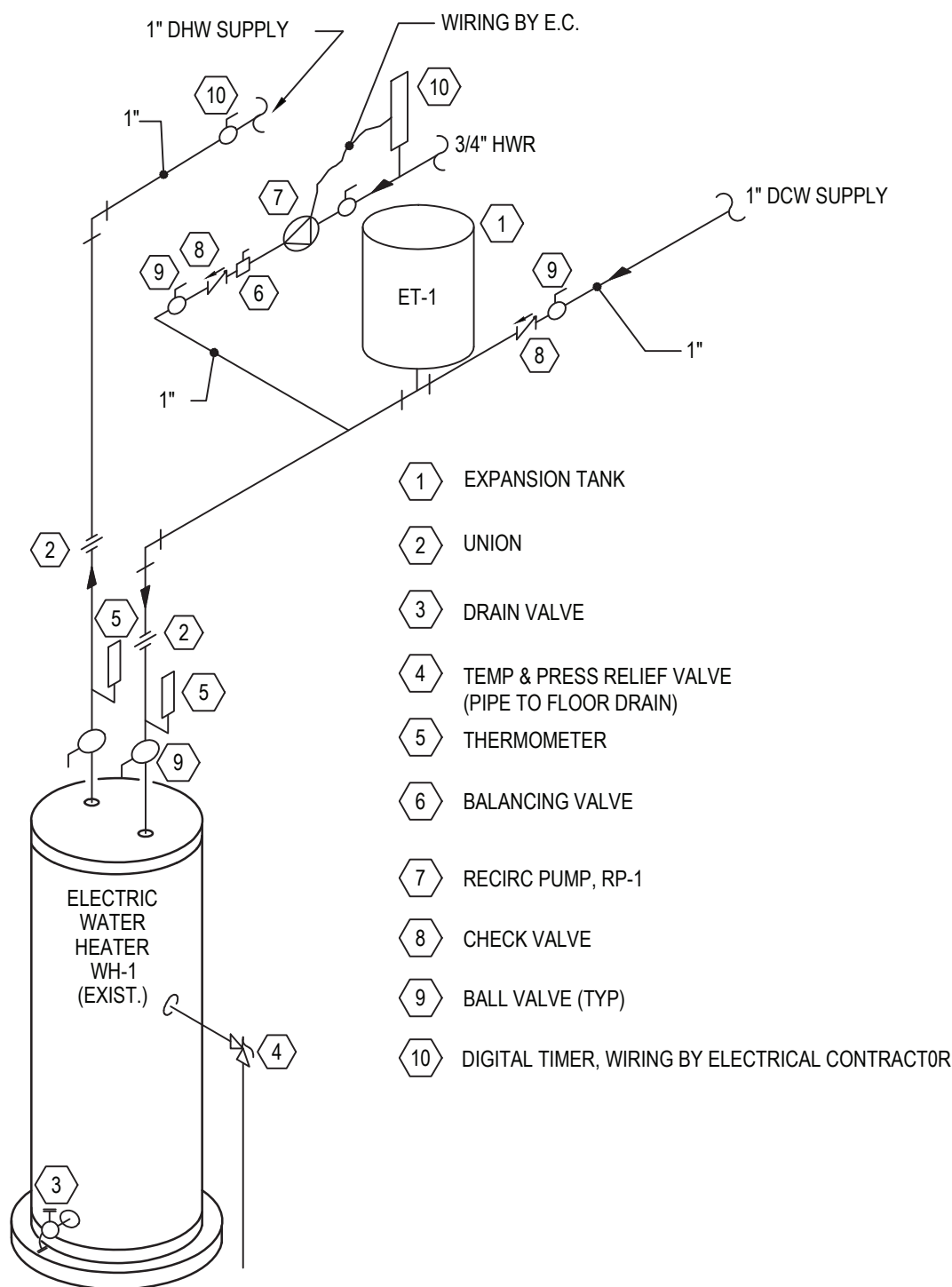
4 **DOMESTIC WATER MAIN RISER DETAIL**  
P-002 SCALE: N.T.S.



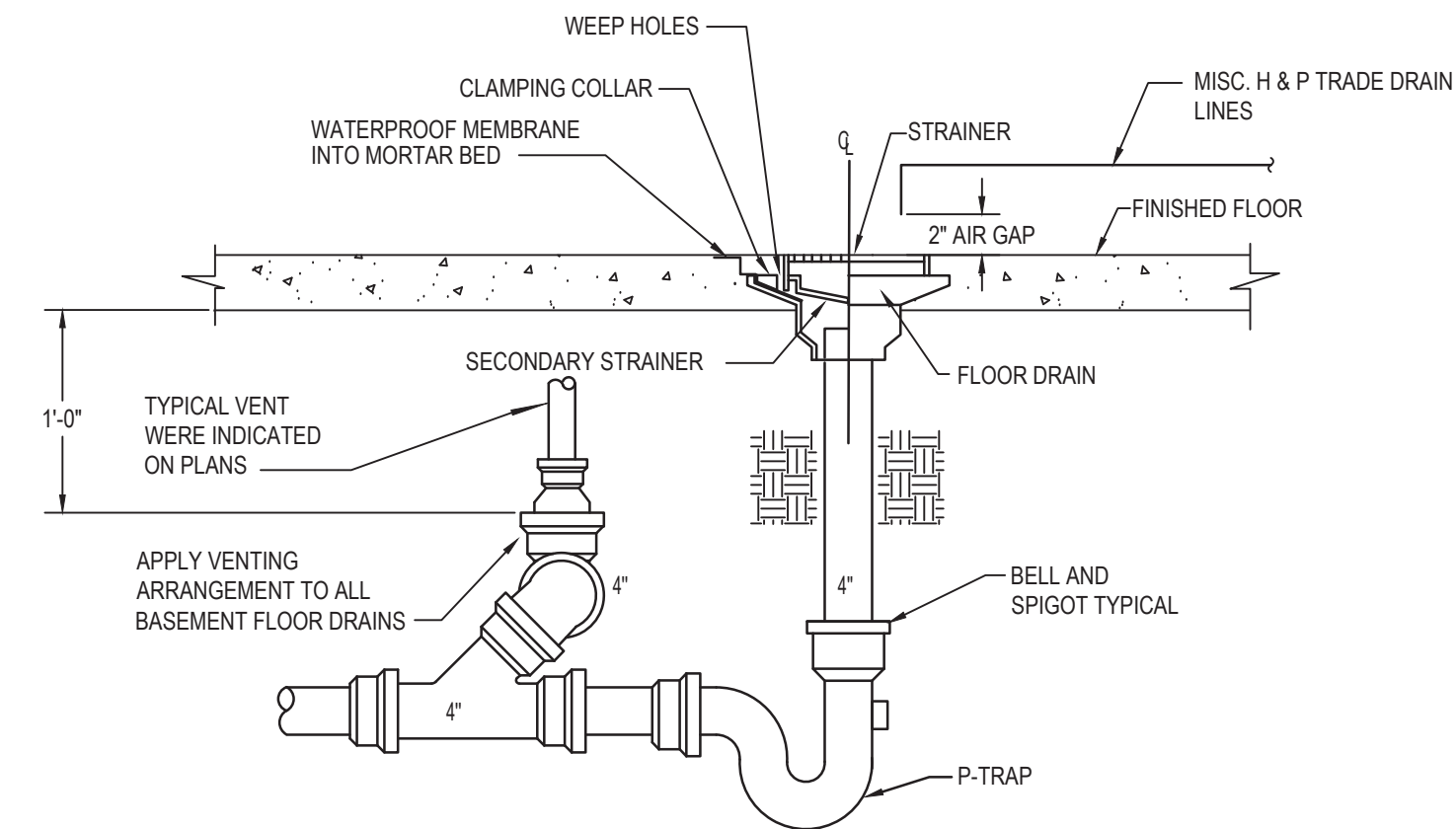
7 **GRADE CLEANOUT DETAIL (GCO-1)**  
P-002 SCALE: N.T.S.



5 **BACKFLOW PREVENTER CLEARANCE DETAIL**  
P-002 SCALE: N.T.S.



8 **ELECTRIC WATER HEATER DETAIL (WH-1)**  
P-002 SCALE: N.T.S.

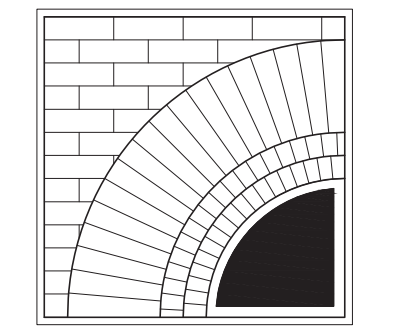


6 **FLOOR DRAIN WITH BURIED PIPING DETAIL**  
P-002 SCALE: N.T.S.

5/20/2025 ISSUED FOR BIDDING

**ISSUES AND REVISIONS**

© THE DRAWING AND THE CONTENTS THEREOF ARE THE SOLE AND COPYRIGHTED PROPERTY OF BUTLER ROWLAND MAYS ARCHITECTS, LLP AND MAY NOT BE ALTERED, COPIED OR REPRODUCED BY ANY METHOD FOR ANY PURPOSE WITHOUT THE EXPRESS WRITTEN CONSENT OF BUTLER ROWLAND MAYS ARCHITECTS, LLP.



**BUTLER  
ROWLAND  
MAYS**  
ARCHITECTS, LLP

57 West High Street  
Ballston Spa  
New York 12020

P: 518•885•1255  
F: 518•885•1266  
www.brmarchitects.com

**Additions &  
Renovations**

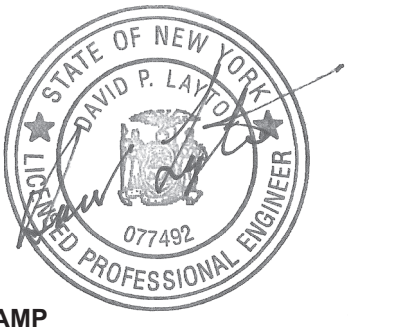
for the  
**Marlboro  
Free Library**

1251 Rte 9W  
Marlboro, NY 12542

**PROJECT**



**CONSULTANT**



**STAMP**

**CALLED NORTH**

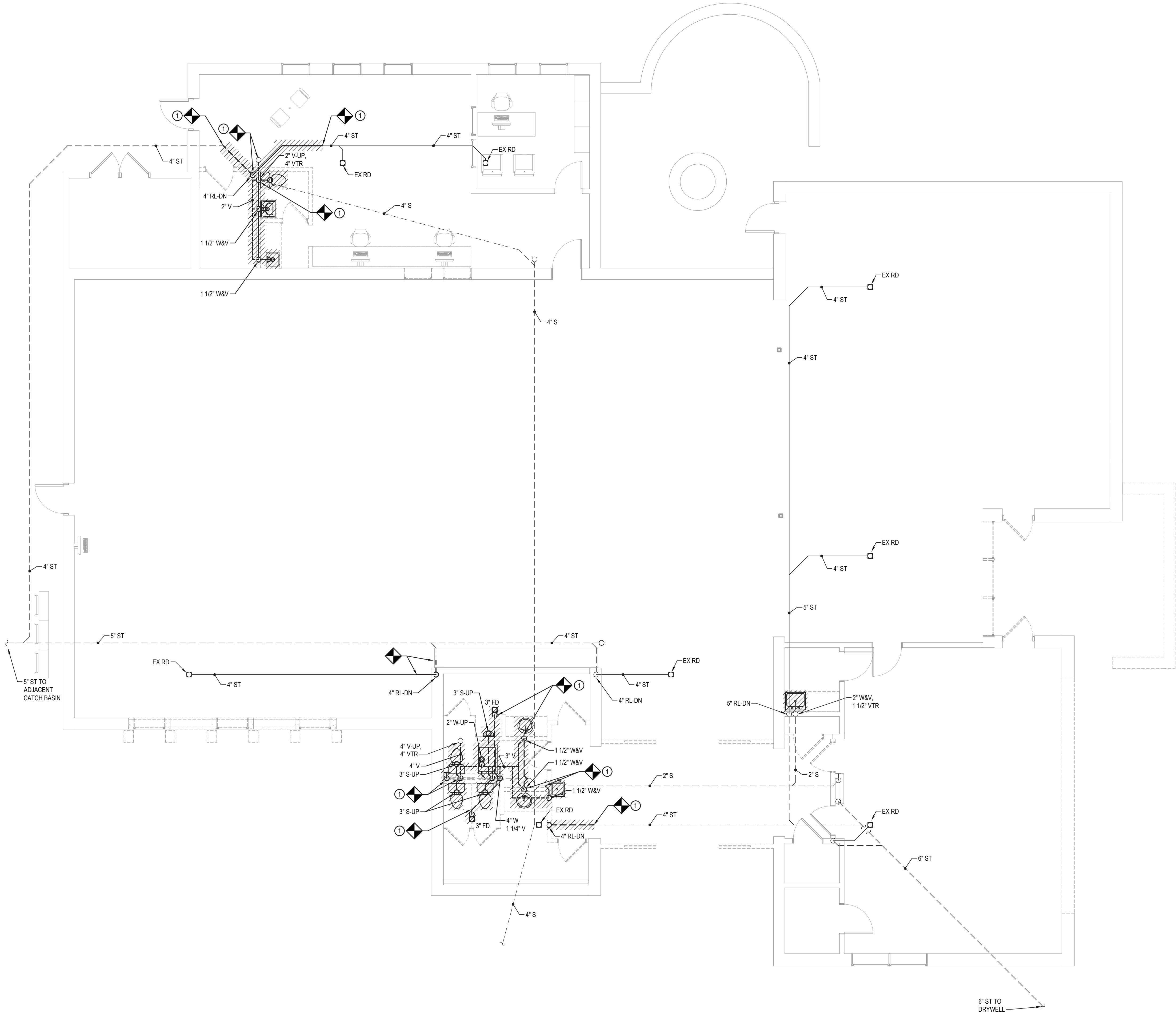
DWN. BY: RW  
SCALE: AS SHOWN  
JOB NO.: 23-46-06  
DATE: 05/20/25

**DETAILS**

**TITLE**

**P002**

DWG. NO.



1 REMOVALS PLAN  
3/16" = 1'-0"

GENERAL NOTES:

1. SLAB REMOVAL AND SLAB REPAIR BY GC CONTRACT. REFER TO PIPE TRENCH DETAIL ON P-002

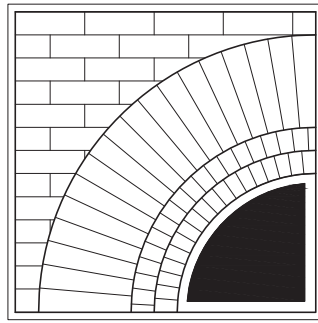
KEYED NOTES:

- 1 REMOVE WASTE, VENT AND STORM PIPING AS SHOWN, REFER TO P101 FOR PIPING INSTALLATION.

5/20/2025 ISSUED FOR BIDDING

ISSUES AND REVISIONS

© THE DRAWING AND THE CONTENTS THEREOF ARE THE SOLE AND COPYRIGHTED PROPERTY OF BUTLER ROWLAND MAYS ARCHITECTS, LLP AND MAY NOT BE ALTERED, COPIED OR REPRODUCED BY ANY METHOD FOR ANY PURPOSE WITHOUT THE EXPRESS WRITTEN CONSENT OF BUTLER ROWLAND MAYS ARCHITECTS, LLP.



**BUTLER  
ROWLAND  
MAYS**  
ARCHITECTS, LLP

57 West High Street  
Ballston Spa  
New York 12020

P: 518•885•1255  
F: 518•885•1266  
www.brmarchitects.com

Additions &  
Renovations

for the  
**Marlboro  
Free Library**

1251 Rte 9W  
Marlboro, NY 12542

PROJECT



SAGE ENGINEERING  
ASSOCIATES, LLP  
9 COLUMBIA CIRCLE  
ALBANY, NY 12203  
(518) 453-6091 FAX (518) 453-6092  
SAGE PROJECT 4095

CONSULTANT



STAMP

CALLED NORTH

DWN. BY: MWO  
SCALE: AS SHOWN  
JOB NO.: 23-46-06  
DATE: 05/20/25

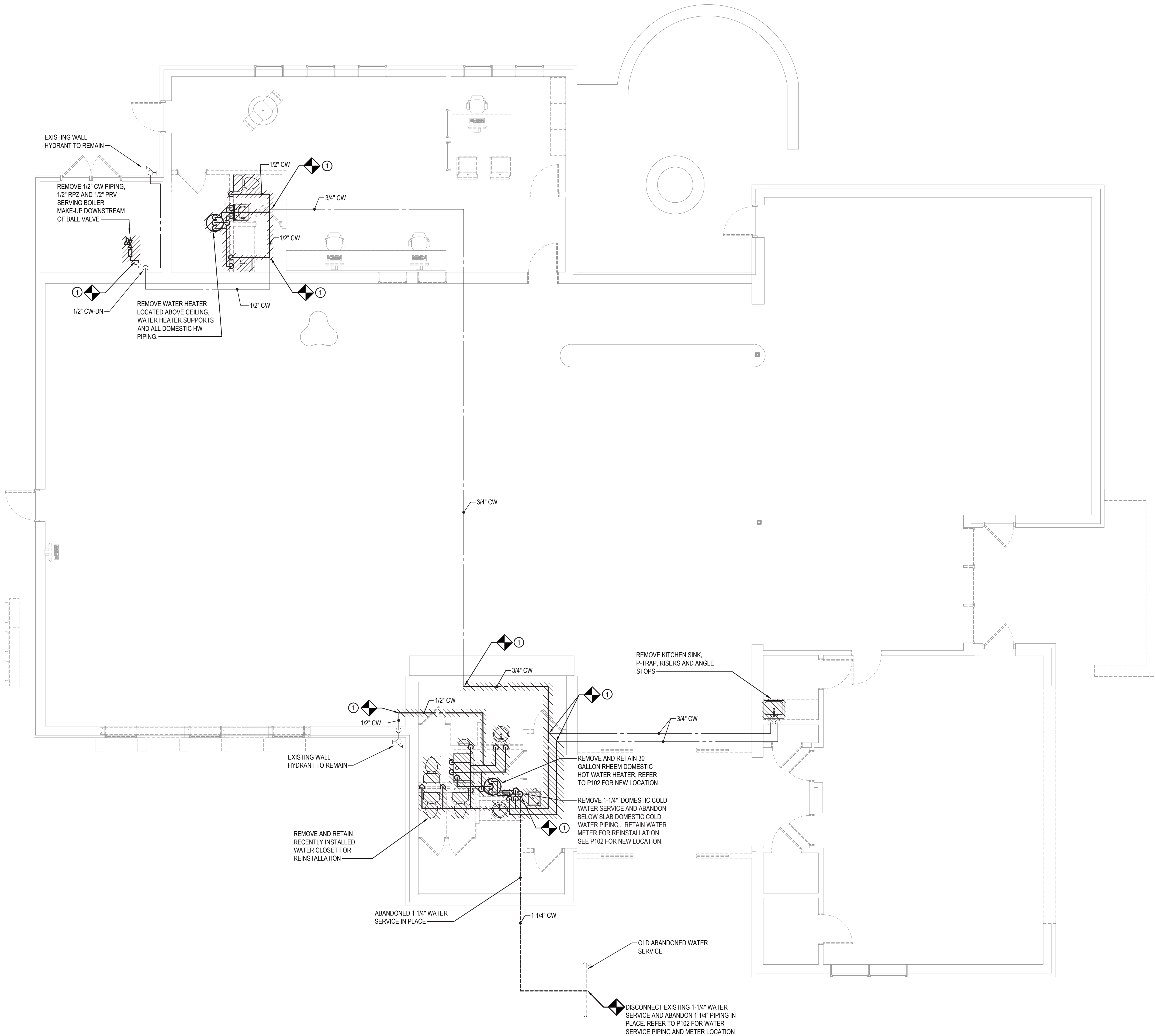
**SANITARY, VENT  
AND STORM  
REMOVAL PLAN**

TITLE

**PR101**

DWG. NO.





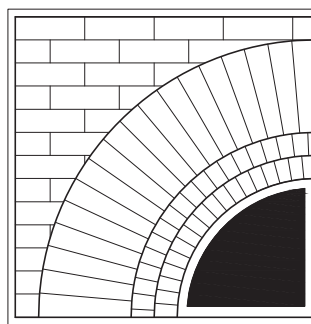
KEYED NOTES:

- ① REMOVE PLUMBING FIXTURES AND DOMESTIC WATER PIPING AS SHOWN, REFER TO P102 FOR PIPING INSTALLATION.

5/20/2025 ISSUED FOR BIDDING

ISSUES AND REVISIONS

© THE DRAWING AND THE CONTENTS THEREOF ARE THE SOLE AND COPYRIGHTED PROPERTY OF BUTLER ROWLAND MAYS ARCHITECTS, LLP AND MAY NOT BE ALTERED, COPIED OR REPRODUCED BY ANY METHOD FOR ANY PURPOSE WITHOUT THE EXPRESS WRITTEN CONSENT OF BUTLER ROWLAND MAYS ARCHITECTS, LLP.



**BUTLER  
ROWLAND  
MAYS**  
ARCHITECTS, LLP

57 West High Street  
Ballston Spa  
New York 12020

P: 518•885•1255  
F: 518•885•1266  
www.brmarchitects.com

Additions &  
Renovations

for the  
**Marlboro  
Free Library**

1251 Rte 9W  
Marlboro, NY 12542

PROJECT



SAGE ENGINEERING  
ASSOCIATES, LLP  
9 COLUMBIA CIRCLE  
ALBANY, NY 12203  
(518) 453-6091 FAX (518) 453-6092  
SAGE PROJECT 4095

CONSULTANT



STAMP

CALLED NORTH

DWN. BY: MWO  
SCALE: AS SHOWN  
JOB NO.: 23-46-06  
DATE: 05/20/25

**DOMESTIC  
WATER  
REMOVAL PLAN**

TITLE

**PR102**

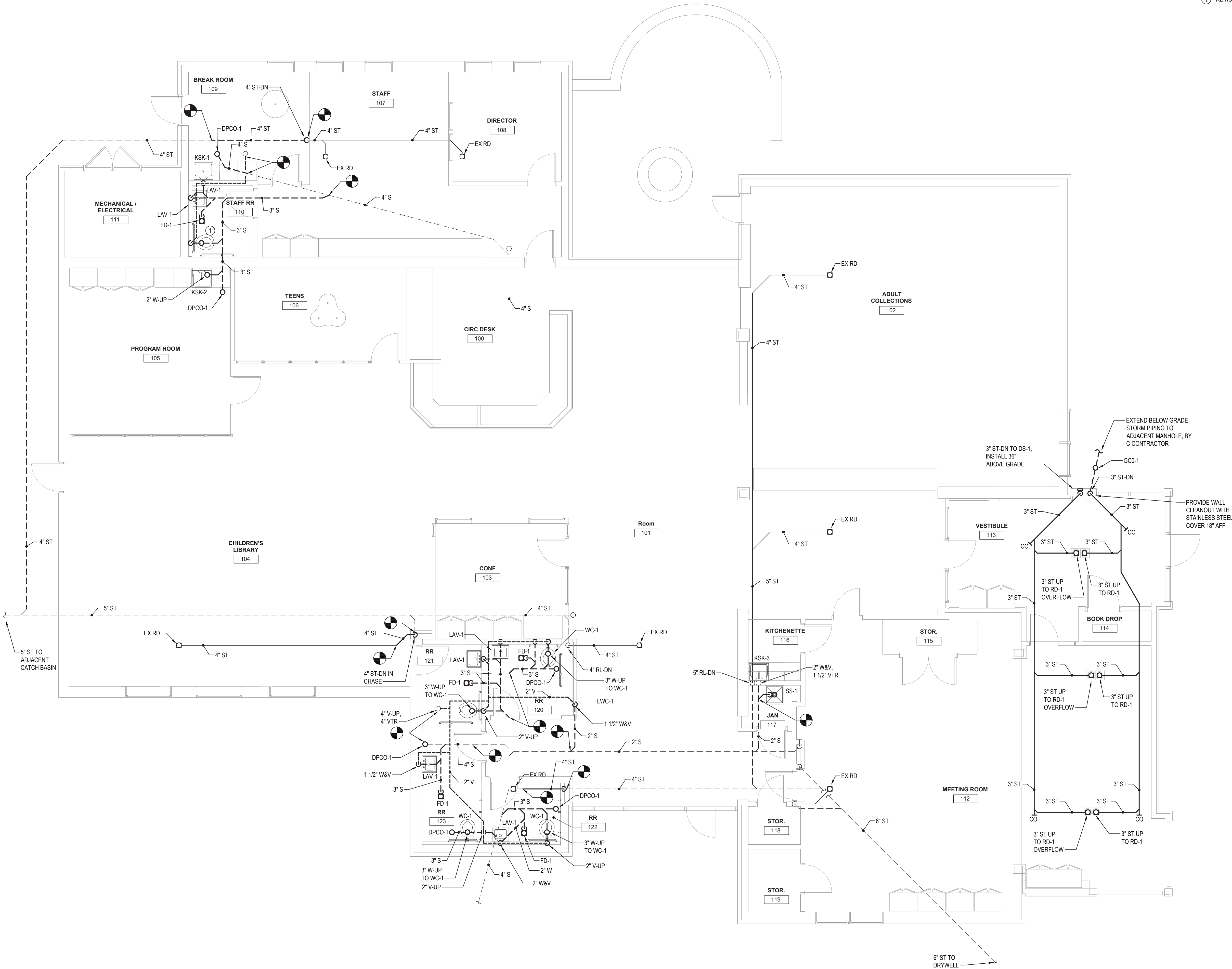
DWG. NO.

GENERAL NOTES:

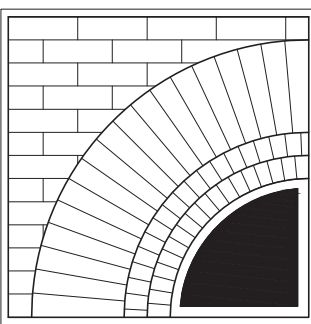
1. COORDINATE STORM PIPING INSTALLATION IN ADDITION WITH HVAC DUCTWORK.

KEYED NOTES:

① REINSTALL SALVAGED TANK WATER CLOSET.



① PLUMBING INSTALLATION PLAN  
3/16" = 1'-0"



**BUTLER  
ROWLAND  
MAYS**  
ARCHITECTS, LLP

57 West High Street  
Ballston Spa  
New York 12020

P: 518•885•1255  
F: 518•885•1266  
www.brmarchitects.com

Additions &  
Renovations

for the  
**Marlboro  
Free Library**

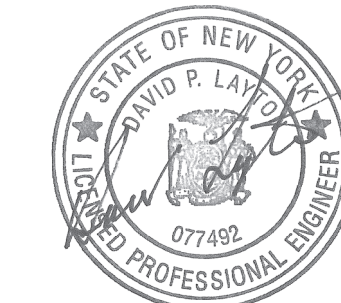
1251 Rte 9W  
Marlboro, NY 12542

PROJECT



SAGE ENGINEERING  
ASSOCIATES, LLP  
9 COLUMBIA CIRCLE  
ALBANY, NY 12203  
(518) 453-6091 FAX (518) 453-6092  
SAGE PROJECT 4095

CONSULTANT



STAMP

CALLED NORTH

DWN. BY: MWO  
SCALE: AS SHOWN  
JOB NO.: 23-46-06  
DATE: 05/20/25

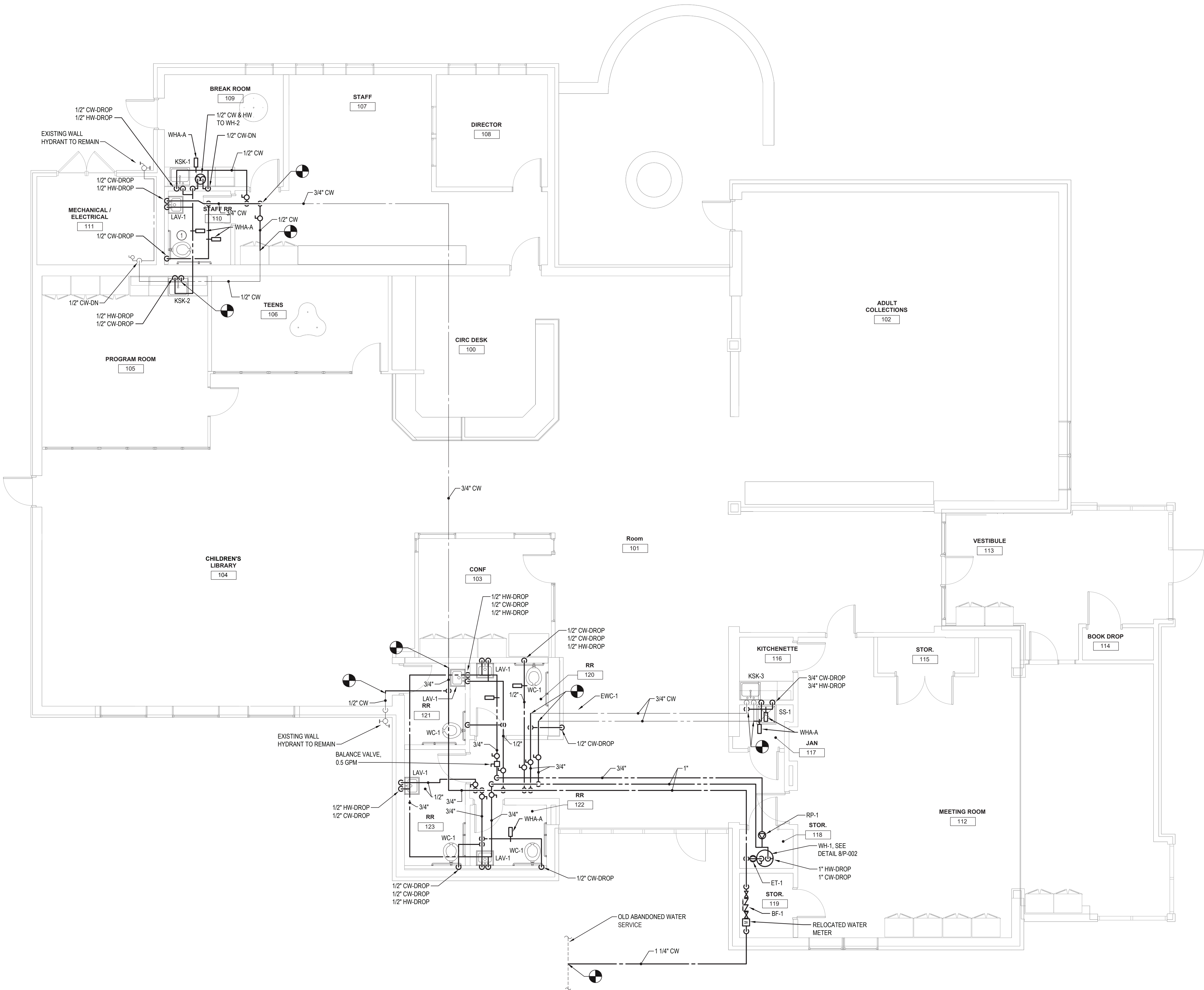
**SANITARY, VENT  
AND STORM  
INSTALLATION  
PLAN**

TITLE

**P101**

DWG. NO.





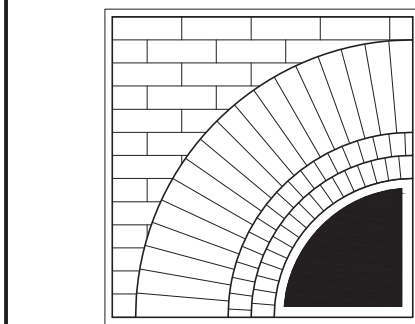
GENERAL NOTES:

1. COORDINATE DOMESTIC WATER PIPING INSTALLATION WITH HVAC DUCTWORK.

KEYED NOTES:

① REINSTALL SALVAGED TANK WATER CLOSET.

① PLUMBING INSTALLATION PLAN  
3/16" = 1'-0"



**BUTLER  
ROWLAND  
MAYS**  
ARCHITECTS, LLP

57 West High Street  
Ballston Spa  
New York 12020

P: 518•885•1255  
F: 518•885•1266  
www.brmarchitects.com

**Additions &  
Renovations**

for the


**Marlboro  
Free Library**

1251 Rte 9W  
Marlboro, NY 12542

PROJECT

  
SAGE ENGINEERING  
ASSOCIATES, LLP  
9 COLUMBIA CIRCLE  
ALBANY, NY 12203  
(518) 453-6091 FAX: (518) 453-6092  
SAGE PROJECT 4095

CONSULTANT

  
STAMP

CALLED NORTH

DWN. BY: MWO  
SCALE: AS SHOWN  
JOB NO.: 23-46-06  
DATE: 05/20/25

**DOMESTIC  
WATER  
INSTALLATION  
PLAN**

TITLE

**P102**

DWG. NO.