



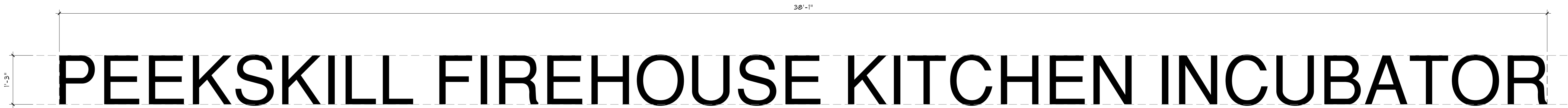
1 Signage Detail (19.86 SF)
A5.03 Scale: 3/4" = 1'-0"



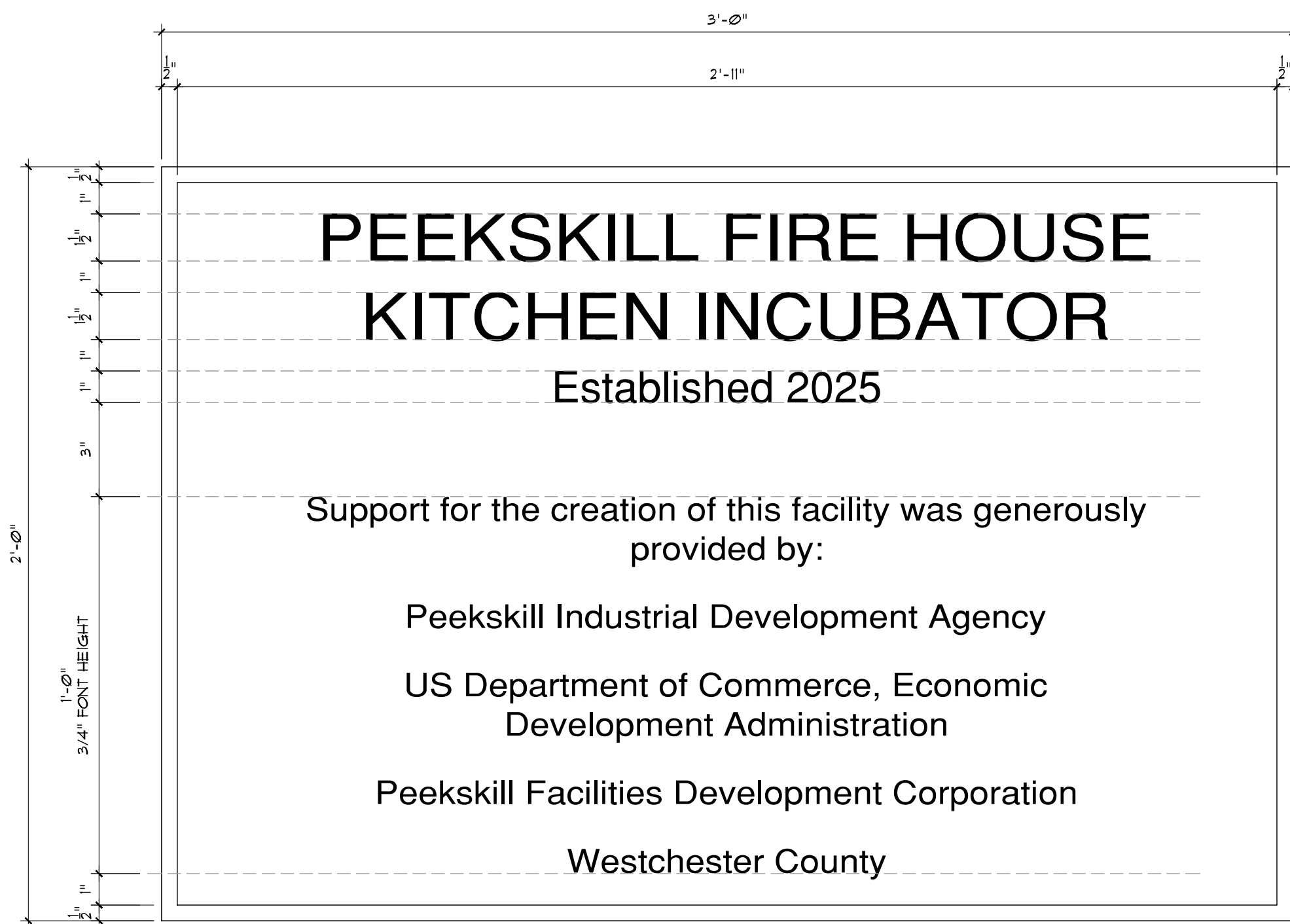
2 Signage Detail (15.35 SF)
A5.03 Scale: 3/4" = 1'-0"

Wall Signs Signage			
Frontage	Requirement	Maximum Sign Area	Signage Proposed
161 LF	3 SF / LF	483 SF	9152 SF

- SIGNAGE NOTES:**
1. MAXIMUM GROUND FREESTANDING SIGNAGE ALLOWANCE PER THE CITY OF PEEKSKILL, CODE SECTION: 468-5E
 2. MAXIMUM WALL SIGN SIGNAGE ALLOWANCE PER THE CITY OF PEEKSKILL, CODE SECTION: 468-5H
 3. SIGN CONTRACTOR SHALL VERIFY EXISTING CONDITIONS ON SITE AND PROVIDE SHOP DRAWINGS, INCLUDING ENGINEERED CONNECTIONS TO EXISTING BUILDING FACADE, TO ARCHITECT FOR REVIEW & APPROVAL PRIOR TO FABRICATION.
 4. SIGN CONTRACTOR SHALL OBTAIN A SIGN PERMIT FROM THE CITY OF PEEKSKILL BUILDING DEPARTMENT PRIOR TO INSTALLATION.
 5. FONT TYPE: "SAN SERIF"
 6. SIGN LETTERS: 1" ALUMINUM CHANNEL LETTERS.
 7. FINISH: CLEAR ANODIZED

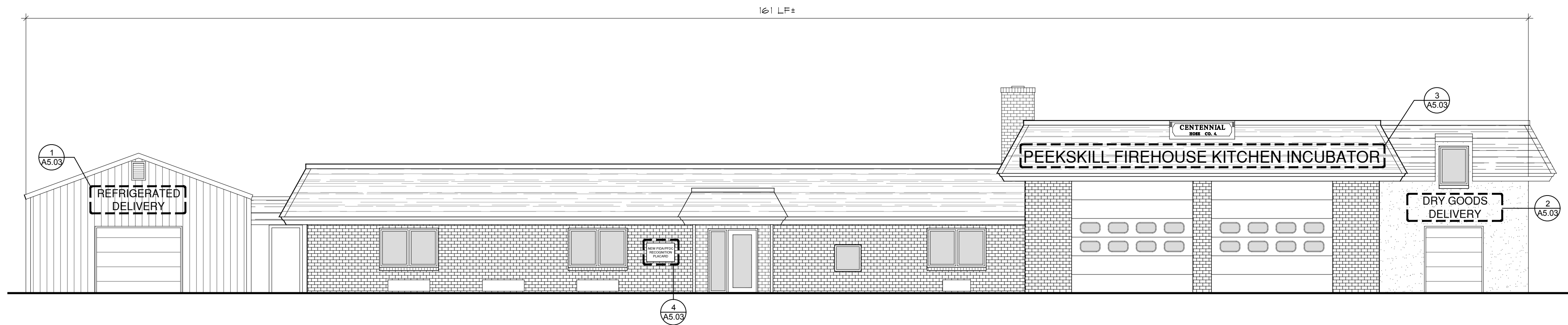


3 Signage Detail (50.31 SF)
A5.02 Scale: 3/4" = 1'-0"



4 Placard Signage Detail (6 SF)
A5.03 Scale: 3" = 1'-0"

- PLACARD NOTES:**
1. FONT TYPE SHALL BE "SANSERIF".
 2. CAST BRONZE PLAQUE.
 3. PLAQUE FABRICATED WITH SIGN CONTRACTOR SIGN CONTRACTOR TO PREPARE SHOP DRAWINGS FOR ARCHITECT REVIEW AND APPROVAL PRIOR TO FABRICATION.
 4. SIGNAGE DEDICATION TEXT CONTENT SUBJECT TO CHANGE.
 5. SIGN ANCHORS SHALL BE COORDINATED WITH EXISTING BRICK MORTAR JOINTS.



5 New West Building Elevation Signage
A5.03 Scale: 1/8" = 1'-0"

NOTES:

IT IS A VIOLATION OF THE LAW FOR ANY PERSON, UNLESS ACTING UNDER THE DIRECTION OF A LICENSED ARCHITECT OR ENGINEER, TO ALTER AN ITEM IN ANY WAY, IF AN ITEM BEARING THE SEAL OF AN ARCHITECT OR ENGINEER IS ALTERED, THE ALTERING ARCHITECT OR ENGINEER SHALL AFFIX TO HIS ITEM THE SEAL AND THE NOTATION ALTERED BY FOLLOWED BY HIS SIGNATURE AND THE DATE OF SUCH ALTERATION, AND A SPECIFIC DESCRIPTION OF THE ALTERATION.

DO NOT SCALE DRAWINGS. WRITTEN DIMENSIONS GOVERN.

© JOSEPH G THOMPSON ARCHITECT, PLLC. ALL RIGHTS RESERVED.



SEAL
Joseph G. Thompson, RA
New York State License #036057

PEEKSKILL FIREHOUSE KITCHEN INCUBATOR

Peekskill Facilities Development Corporation (Owner)
EDA PROJECT #01-01-15338
701 Washington Street, Peekskill, New York 10566
S-B-L: 32-20-9-1
City of Peekskill - Westchester County

FOR CONTRACTOR BID

Date: May 7, 2025

Revisions:
△
△
△
△
△

A5.03