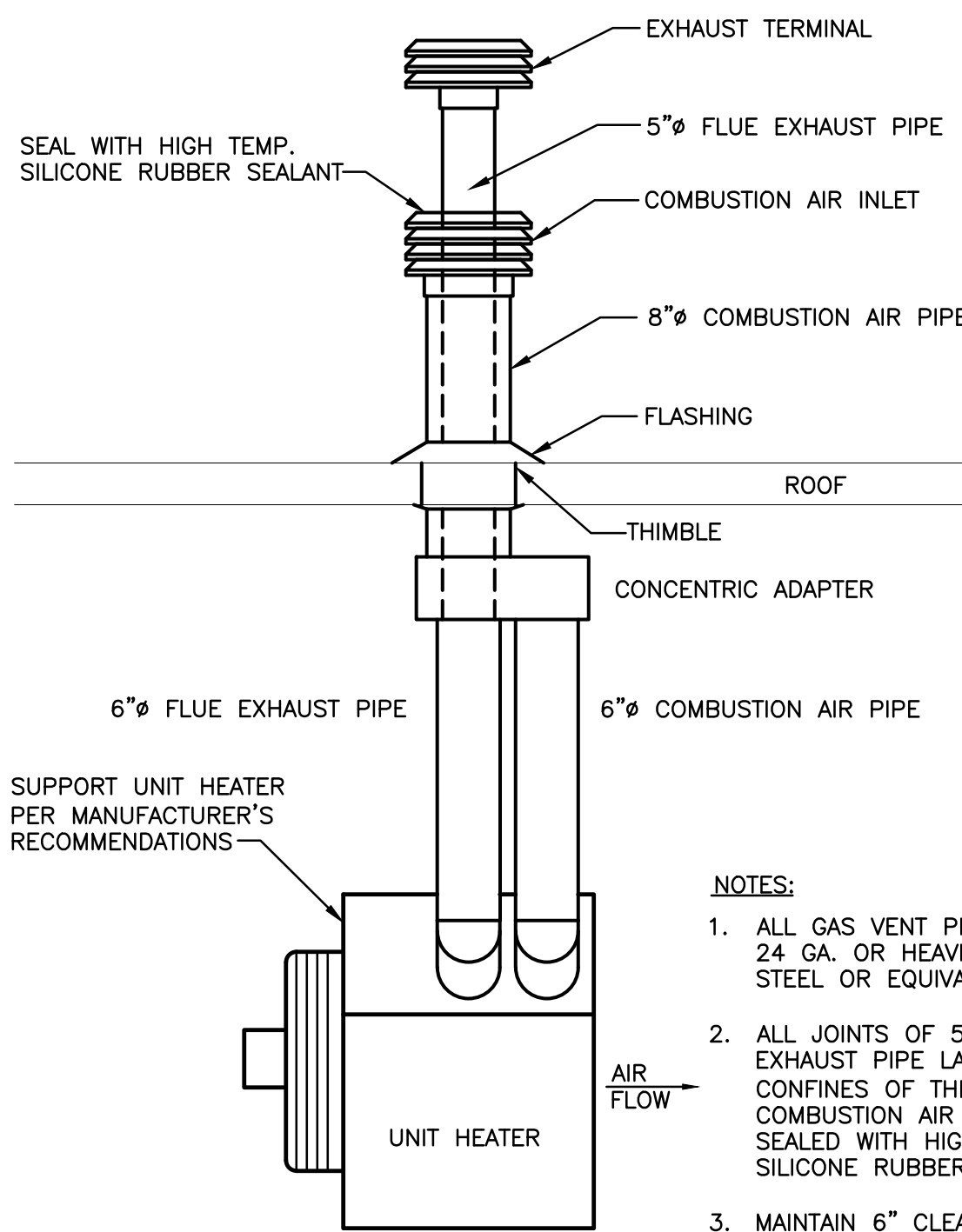


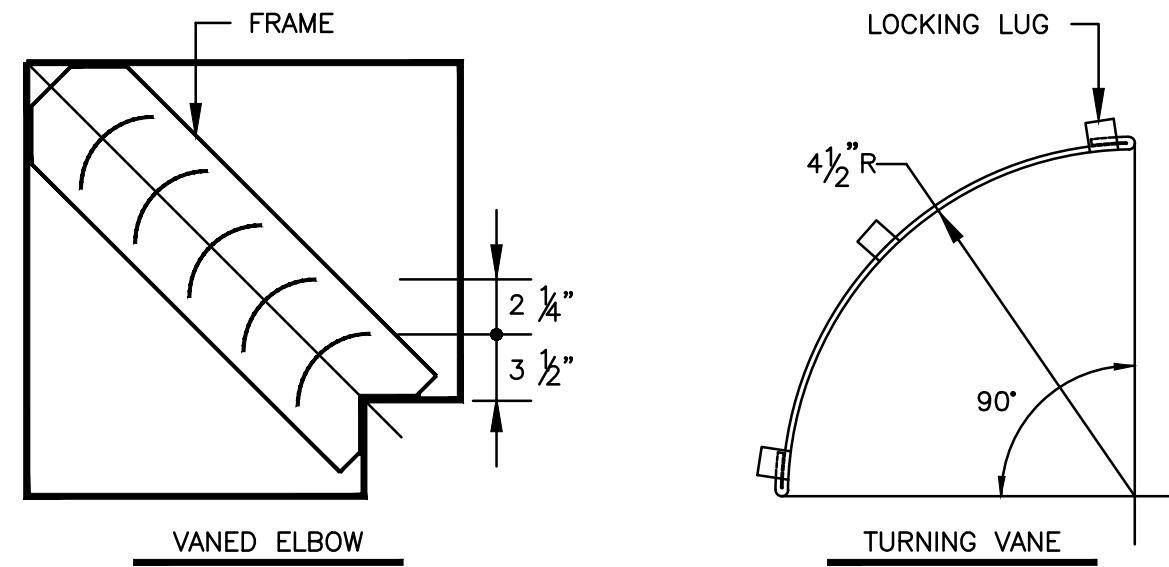
- NOTES:
- KITCHEN 3 ARRANGEMENT SHOWN. KITCHEN 4 ARRANGEMENT IS MIRRORED.

1 KITCHEN HOOD WITH MAKEUP AIR DUCTWORK DETAIL
SCALE: 3/8"=1'-0"



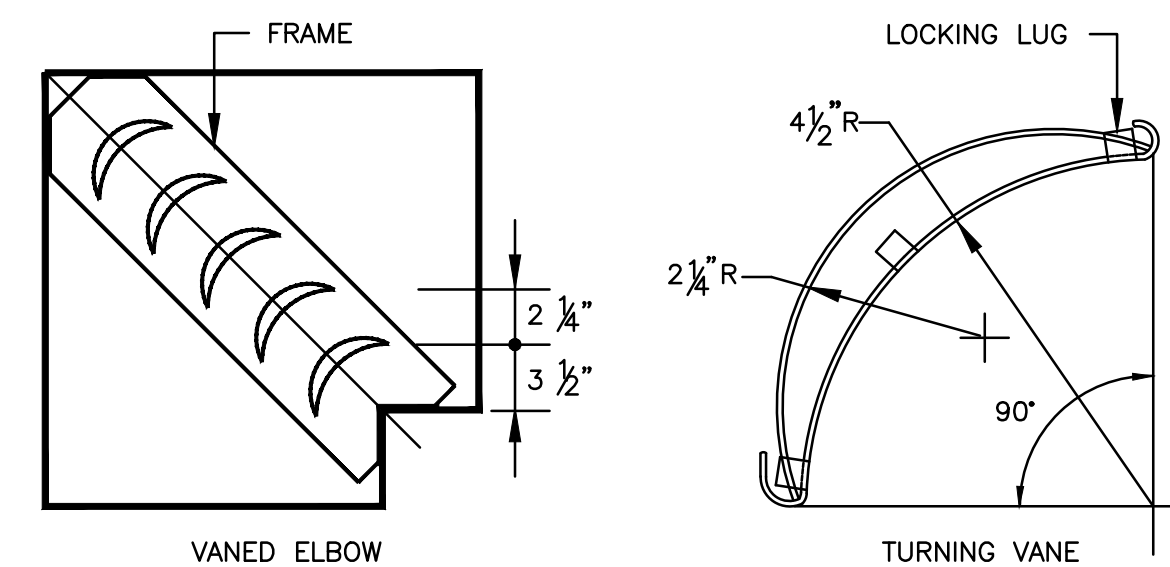
- NOTES:
- ALL GAS VENT PIPING SHALL BE 24 GA. OR HEAVIER GALVANIZED STEEL OR EQUIVALENT.
 - ALL JOINTS OF 5"Ø FLUE EXHAUST PIPE LAYING WITHIN THE CONFINES OF THE 8"Ø COMBUSTION AIR PIPE TO BE SEALED WITH HIGH TEMPERATURE SILICONE RUBBER SEALANT.
 - MAINTAIN 6" CLEARANCE TO COMBUSTIBLE MATERIALS FOR ALL GAS VENT PIPING.

2 UNIT HEATER VENT PIPING DETAIL
N.T.S.



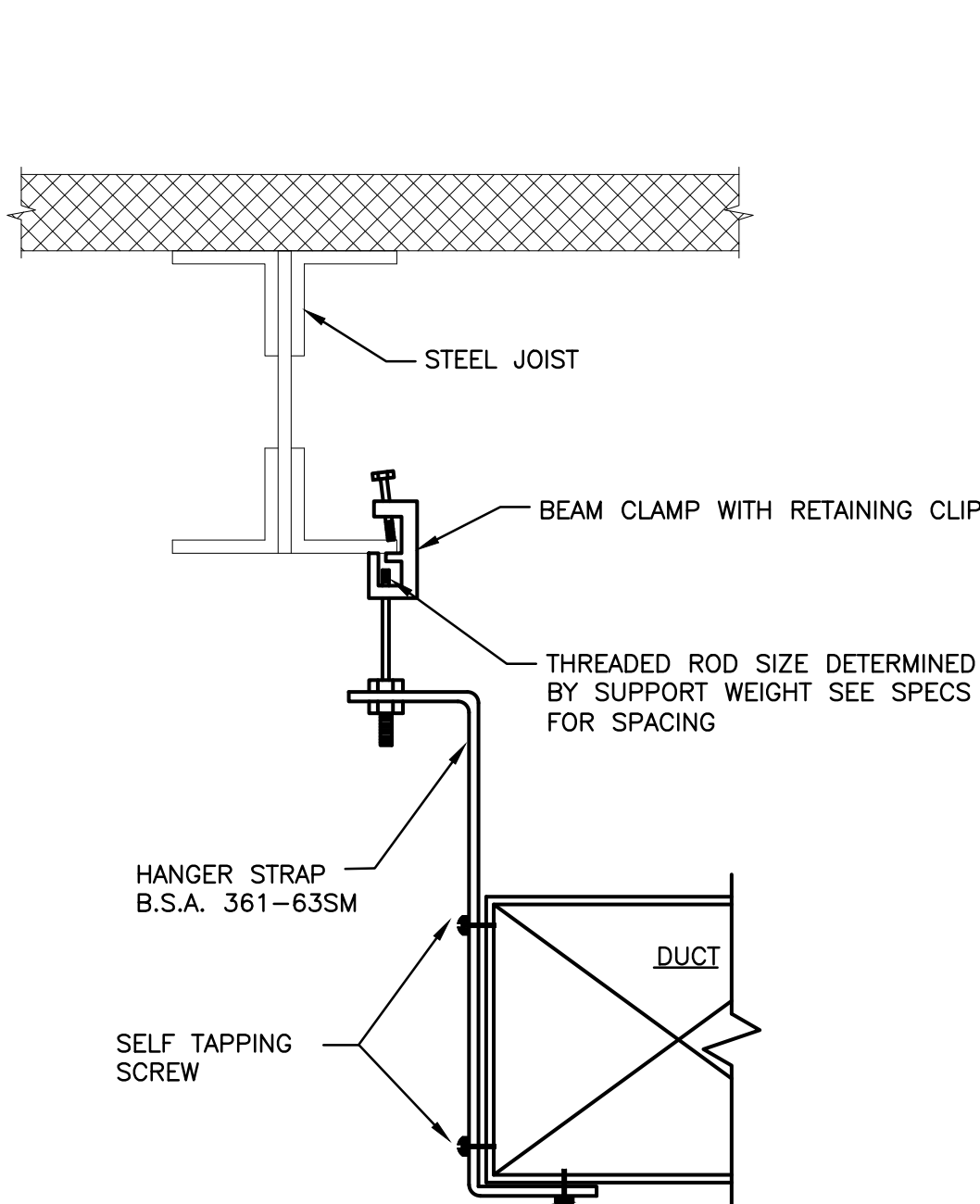
- NOTES:
- LOCKING LUGS INTEGRAL WITH VANE.
 - MAXIMUM UNSUPPORTED VANE LENGTH 36".
 - FRAMES BOLTED OR RIVETED TO ELBOW.
 - VANES AND FRAMES - SAME GAUGE AS ELBOW.

SINGLE THICKNESS TURNING VANES FOR SQUARE ELBOW FOR MAXIMUM DUCT WIDTHS TO 12"



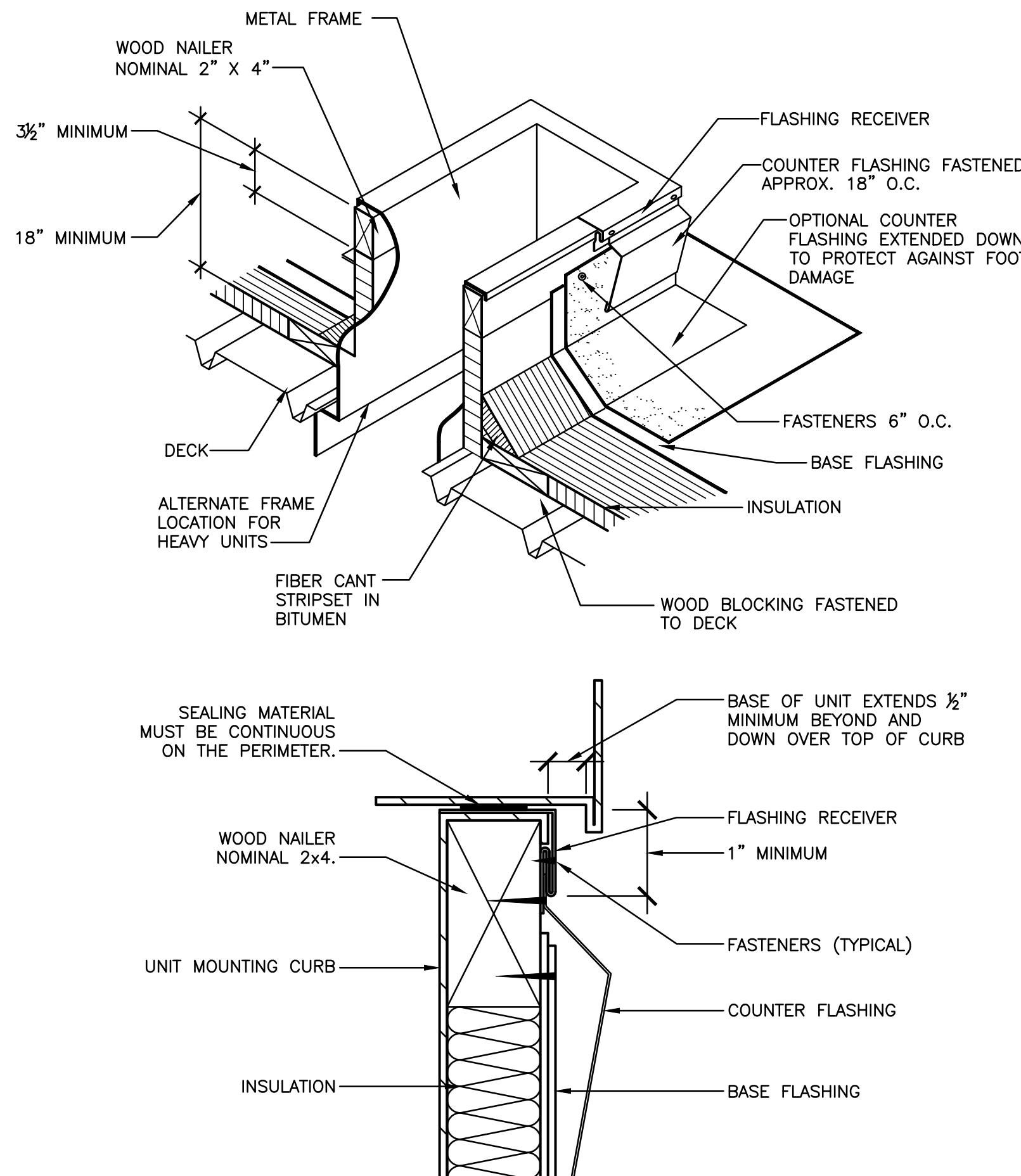
- NOTES:
- LOCKING LUGS INTEGRAL WITH VANE.
 - MAXIMUM UNSUPPORTED VANE LENGTH 48".
 - FRAMES BOLTED OR RIVETED TO ELBOW.
 - VANES AND FRAMES - SAME GAUGE AS ELBOW.

DOUBLE THICKNESS TURNING VANES FOR SQUARE ELBOW FOR DUCT WIDTHS 13" & LARGER

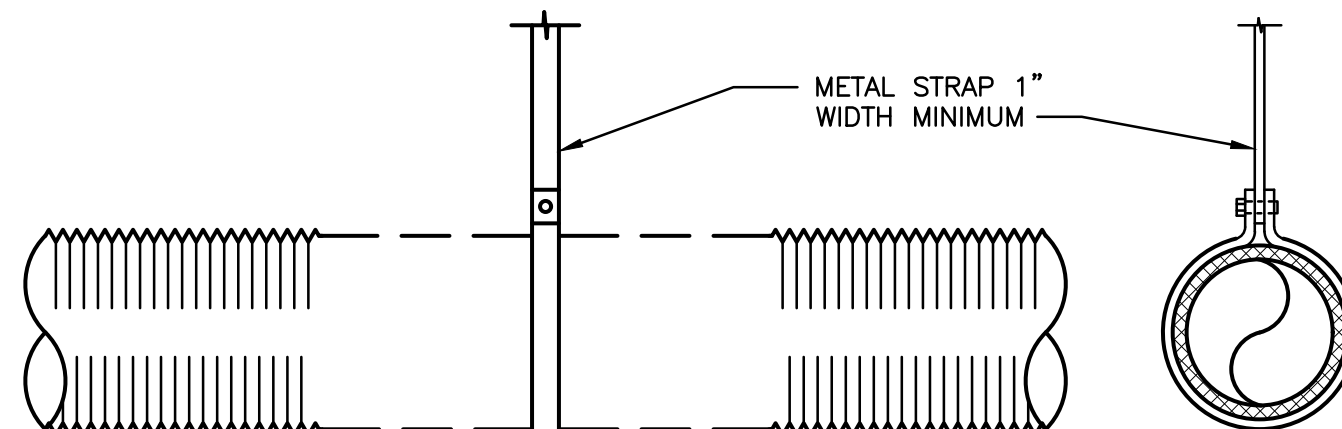


- NOTES:
- DUCTS SHALL NOT BE HUNG FROM OR SUPPORTED BY HUNG CEILING.
 - FOR DUCTS NOT EXCEEDING 2 SQ. FT. IN CROSS-SECTIONAL AREA, HANGERS SHALL BE OF METAL NOT LESS THAN 1/16".
 - FOR DUCTS LARGER THAN 2 SQ. FT. IN CROSS-SECTIONAL AREA, HANGERS SHALL BE OF METAL NOT LESS THAN 1" BY 1/8".
 - FOR ALL DUCTS, HANGERS SHALL BE TURNED UNDER AND FASTENED TO THE BOTTOM OF DUCT AS SHOWN ABOVE.
 - WHERE CROSS-SECTIONAL AREA OF DUCT EXCEEDS 8 SQ. FT., HANGERS SHALL BE NOT MORE THAN 4 FT. ON CENTER.

4 METHOD OF HANGING DUCTWORK
N.T.S.

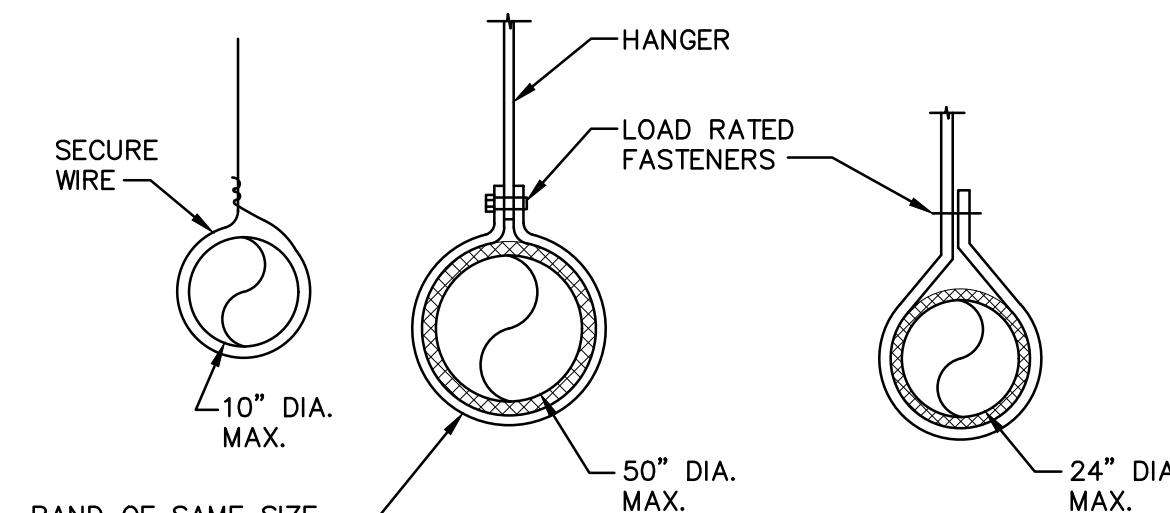


5 ROOFTOP CURB DETAIL
N.T.S.



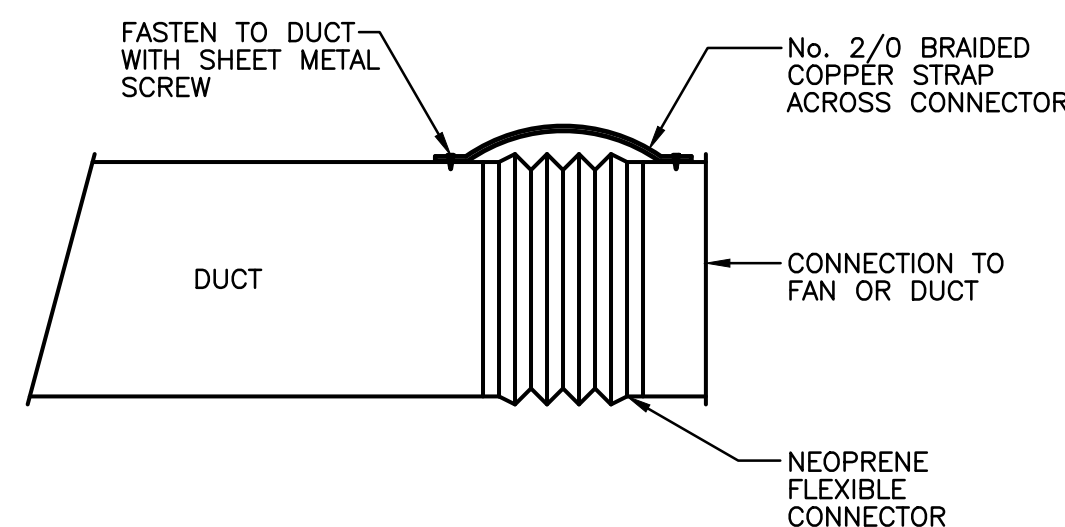
- NOTES:
- DUCT SHOULD EXTEND STRAIGHT FOR A MINIMUM OF 3 DUCT DIAMETERS BEFORE BENDING.
 - SUPPORT SYSTEM MUST NOT BEND DUCT OR CAUSE OUT OF ROUND SHAPE.
 - MAXIMUM SAG 1/2" PER FOOT OR SUPPORT SPACING.
 - 5'-0" MAXIMUM FLEX DUCT LENGTH.

6 FLEX DUCT SUPPORT
N.T.S.



NOTE:
HANGERS MUST NOT DEFORM DUCT SHAPE.

7 ROUND DUCT HANGING DETAIL
N.T.S.



8 FLEXIBLE CONNECTOR GROUND STRAP
N.T.S.

UNAUTHORIZED ALTERATION OR ADDITION TO A PLAN BEARING A LICENSED PROFESSIONAL ENGINEER'S SEAL IS A VIOLATION OF SECTION 7209, SUB-DIVISION 2 OF THE N.Y. STATE EDUCATION LAW. FELLENER ENGINEERING, LLP CERTIFICATE OF AUTHORIZATION #: 0017795

FELLENER III
ENGINEERING LLP
www.fellp.com

22 Mulberry St., Suite 2A, Middletown, NY 10940
t 845-343-1481 fx 845-343-4986

181 Church St., Suite 100, Poughkeepsie, NY 12601
t 845-454-9704 fx 855-320-8735

DESIGNED BY: RW DRAWN BY: JCL APPROVED BY: EDF FE PROJECT #: 23-369

1" = 2"

REFERENCE SCALE