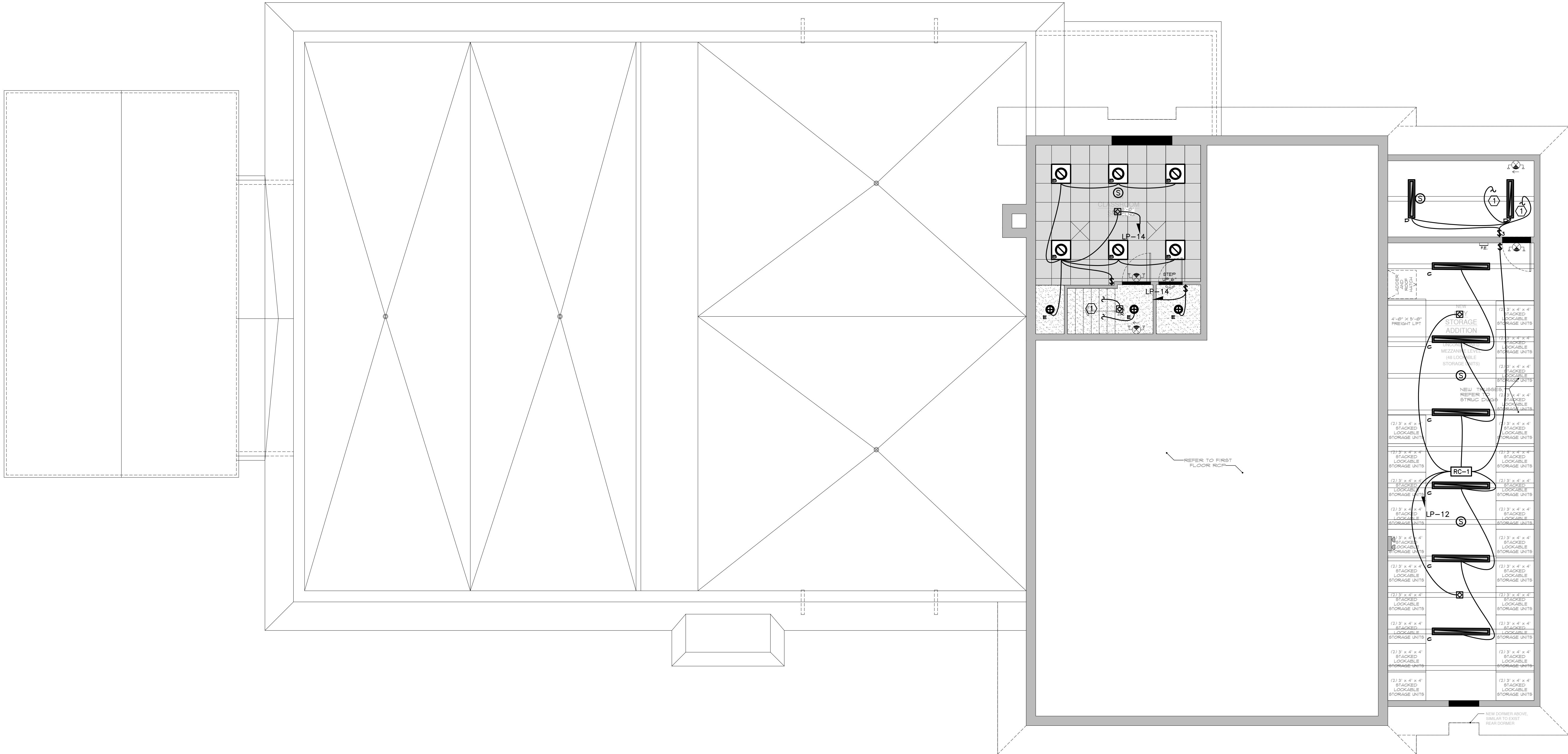


File Name: F:\2023\23-369 Peekskill Firehouse Kitchen Incubator\ELECTRICAL\E2.02 (SECOND FLOOR LIGHTING).dwg (Layout: E2.02 )  
Date: Tue, Sep 17, 2024 - 10:11 AM (Name: wpb)



1 ELECTRICAL: CONSTRUCTION SECOND FLOOR LIGHTING & FIRE ALARM PLAN z 1  
SCALE: 3/16"=1'-0"

NEW WORK KEYED NOTES:  
1 SEE E2.01 FOR CONTINUATION.

UNAUTHORIZED ALTERATION OR ADDITION TO A PLAN BEARING A LICENSED PROFESSIONAL ENGINEER'S SEAL IS A VIOLATION OF SECTION 7209, SUB-DIVISION 2 OF THE N.Y. STATE EDUCATION LAW. FELLENER ENGINEERING, LLP CERTIFICATE OF AUTHORIZATION #: 0017795

**FELLENER III**  
ENGINEERING LLP  
www.fellp.com

22 Mulberry St., Suite 2A,  
Middletown, NY 10940  
t 845-343-1481 fx 845-343-4986

181 Church St., Suite 100,  
Poughkeepsie, NY 12601  
t 845-454-9704 fx 855-320-8735

DESIGNED BY: RW	DRAWN BY: WPB	APPROVED BY: EDF	FE PROJECT #: 23-369
--------------------	------------------	---------------------	-------------------------

1/8" 1/4" 1/2" 0 1" 2"  
REFERENCE SCALE

PEEKSKILL FIREHOUSE KITCHEN INCUBATOR

City of Peekskill (Owner)  
701 Washington Street  
Peekskill, New York 10566  
S-B-L: 32-20-9-1  
City of Peekskill - Westchester County

DRAFT CONSTRUCTION DOCUMENT - NOT FOR PERMIT OR CONSTRUCTION

Date: September 17, 2024  
Revisions:

E2.02



Joseph G. Thompson Architect, PLLC  
100 N Division Street, Ste 100  
Peekskill, New York 10566  
PH: (845) 532-8156  
EM: joe@jthompsonarch.com

NOTES:  
IT IS A VIOLATION OF THE LAW FOR ANY PERSON, UNLESS ACTING UNDER THE DIRECTION OF A LICENSED ARCHITECT OR ENGINEER, TO ALTER AN ITEM IN ANY WAY. IF AN ITEM BEARING THE SEAL OF AN ARCHITECT OR ENGINEER IS ALTERED, THE ALTERING ARCHITECT OR ENGINEER SHALL AFFIX TO HIS ITEM THE SEAL AND THE NOTATION ALTERED BY FOLLOWED BY HIS SIGNATURE AND THE DATE OF SUCH ALTERATION, AND A SPECIFIC DESCRIPTION OF THE ALTERATION.  
DO NOT SCALE DRAWINGS. WRITTEN DIMENSIONS GOVERN.  
© JOSEPH G THOMPSON ARCHITECT, PLLC. ALL RIGHTS RESERVED.



SEAL  
ERIC D. FELLENER, P.E.  
NY PROFESSIONAL ENGINEER  
NO. 073044-1  
ISSUED 1995 EXP. 8/25