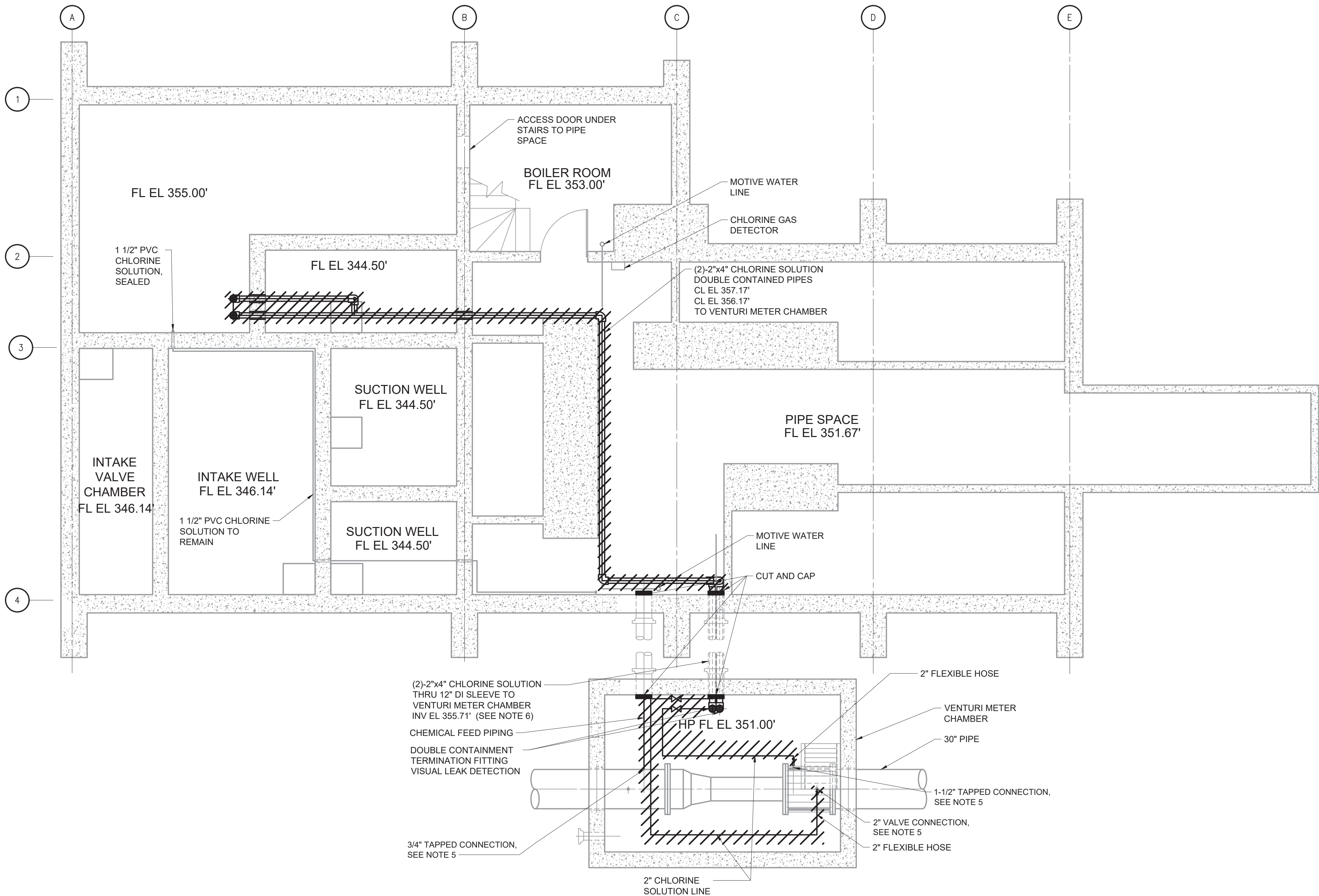


File: C:\USERS\BCASULL\Documents\HAZEN AND SAWYER\90388-000_RYE_LAKE_FILTRATION\PROJECT\MECHANICAL\D-500 Saved by BCASULL Save date: 2/6/2025 5:31 PM
PLOT DATE: 2/6/2025 5:31 PM BY: BCASULL



DEMOLITION PLAN BELOW EL 344.50'
SCALE: 1/4" = 1'-0"

NOTES:

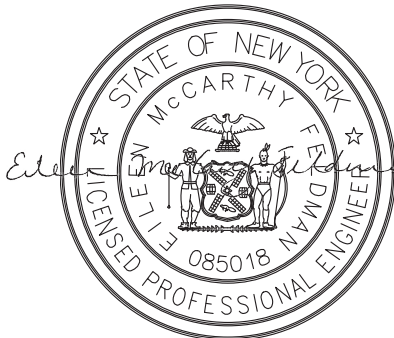
1. OPERATION OF EXISTING CHEMICAL SYSTEMS ARE REQUIRED UNTIL WATER FILTRATION PLANT IS COMMISSIONED AND FULLY OPERATIONAL. CONTRACTOR SHALL SEQUENCE DEMOLITION WORK ACCORDINGLY.
2. CONTRACTOR SHALL DISPOSE OF PROCESS WATER AND ALL RESIDUAL GASEOUS, LIQUID, AND SOLID CHEMICALS IN ACCORDANCE WITH APPLICABLE LAWS, REGULATIONS, AND ENVIRONMENTAL, HEALTH, AND SAFETY (EHS) REQUIREMENTS.
3. ALL SUPPORTS, PEDESTALS, AND ANCHORS SHALL BE REMOVED WITH THE EQUIPMENT IN ACCORDANCE WITH SECTION 02 41 00 - DEMOLITION UNLESS OTHERWISE NOTED.
4. UPON COMPLETION OF THE REMOVALS AS SHOWN, THE CHLORINE ROOM AND PUMP AND EQUIPMENT ROOM SHALL BE CLEAN OF ALL ITEMS OF MECHANICAL AND ELECTRICAL EQUIPMENT, PIPING CONDUIT, CABLE, CONCRETE PADS AND PEDESTALS, AND SUPPORT STRUCTURES DOWN TO A BROOM SWEEP FLOOR. PATCH FLOOR TO LEVEL SURFACE IN ACCORDANCE WITH STRUCTURAL DETAIL S-03-0480.
5. TAPPED CONNECTIONS SHALL BE PLUGGED WITH NPT PIPE PLUGS OF THE APPROPRIATE SIZING AS SPECIFIED IN THE DRAWING.
6. INTERNAL PIPES OF EXISTING DOUBLE CONTAINMENT PIPING SHALL BE REMOVED AND OUTER SLEEVE TO REMAIN AND BE ABANDONED.

WARNING
IT IS A VIOLATION OF SECTION 7209.2 OF THE NEW YORK STATE EDUCATION LAW FOR ANY PERSON, UNLESS ACTING UNDER THE DIRECTION OF A LICENSED PROFESSIONAL ENGINEER, TO ALTER IN ANY WAY PLANS, SPECIFICATIONS, PLATS OR REPORTS TO WHICH THE SEAL OF A PROFESSIONAL ENGINEER HAS BEEN APPLIED. IF AN ITEM BEARING THE SEAL OF A PROFESSIONAL ENGINEER IS ALTERED, THE ALTERING ENGINEER SHALL AFFIX TO THE ITEM HIS SEAL AND THE NOTATION "ALTERED BY" FOLLOWED BY HIS SIGNATURE, THE DATE, AND A SPECIFIC DESCRIPTION OF THE ALTERATION.

1/4" = 1'-0"
1 0 1 2 3 7'

				PROJECT ENGINEER:	R. FROST
				DESIGNED BY:	R. FROST
				DRAWN BY:	B. CASULL
				CHECKED BY:	E. FELDMAN
				IF THIS BAR DOES NOT MEASURE 1" THEN DRAWING IS NOT TO FULL SCALE	0 1/2" 1"
REV	ISSUED FOR	DATE	BY		

BID SET



Hazen
HAZEN AND SAWYER
498 SEVENTH AVENUE, 11th FLOOR
NEW YORK, NEW YORK 10018

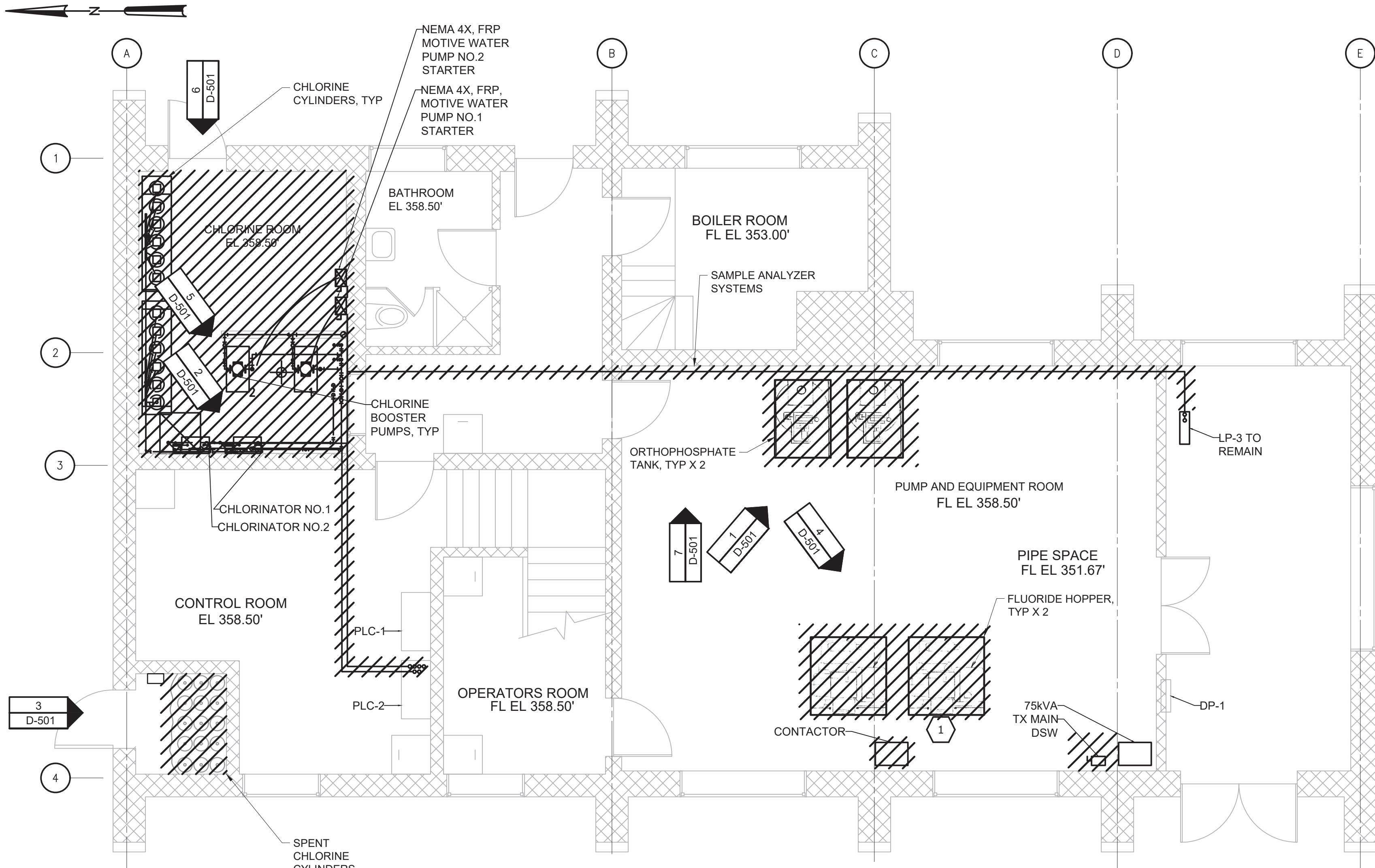
WESTCHESTER JOINT WATER WORKS
MAMARONECK, NY

RYE LAKE WATER FILTRATION PLANT
HARRISON, NY

EXISTING RYE LAKE CHEMICAL BUILDING
DEMOLITION PLAN BELOW EL 358.50'

DATE:	FEB 2025
HAZEN NO.:	90388-000
CONTRACT NO.:	A1364-A
DRAWING NUMBER:	D-500

File: C:\USERS\BCASULL\Documents\HAZEN AND SAWYER\90388-000_RYE_LAKE_FILTRATION\PROJECT FILES\PROJECT\MECHANICAL\D-501 Saved by BCASULL Save date: 2/6/2025 5:31 PM
PLOT DATE: 2/6/2025 5:32 PM BY: BCASULL



DEMOLITION PLAN EL 358.50
SCALE: 1/4" = 1'-0"

NOTES:

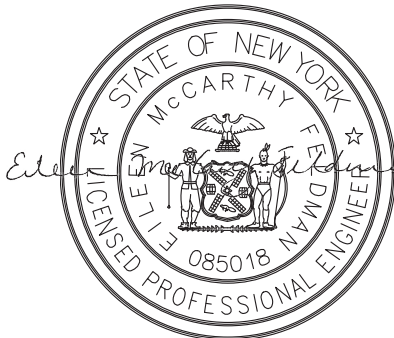
1. OPERATION OF EXISTING CHEMICAL SYSTEMS ARE REQUIRED UNTIL WATER FILTRATION PLANT IS COMMISSIONED AND FULLY OPERATIONAL. CONTRACTOR SHALL SEQUENCE DEMOLITION WORK ACCORDINGLY.
2. CONTRACTOR SHALL DISPOSE OF PROCESS WATER AND ALL RESIDUAL GASEOUS, LIQUID, AND SOLID CHEMICALS IN ACCORDANCE WITH APPLICABLE LAWS, REGULATIONS, AND ENVIRONMENTAL, HEALTH, AND SAFETY (EHS) REQUIREMENTS.
3. ALL SUPPORTS, PEDESTALS, AND ANCHORS SHALL BE REMOVED WITH THE EQUIPMENT IN ACCORDANCE WITH SECTION 02 41 00 - DEMOLITION UNLESS OTHERWISE NOTED.
4. UPON COMPLETION OF THE REMOVALS AS SHOWN, THE CHLORINE ROOM AND PUMP AND EQUIPMENT ROOM SHALL BE CLEAN OF ALL ITEMS OF MECHANICAL AND ELECTRICAL EQUIPMENT, PIPING, CONDUIT, CABLE, CONCRETE PADS AND PEDESTALS, AND SUPPORT STRUCTURES DOWN TO A BROOM SWEEP FLOOR. PATCH FLOOR TO LEVEL SURFACE.
5. TURBIDITY ANALYZER AND ASSOCIATED TUBING, ELECTRICAL, AND DRAINAGE TO REMAIN.

WARNING
IT IS A VIOLATION OF SECTION 7209.2 OF THE NEW YORK STATE EDUCATION LAW FOR ANY PERSON, UNLESS ACTING UNDER THE DIRECTION OF A LICENSED PROFESSIONAL ENGINEER, TO ALTER IN ANY WAY PLANS, SPECIFICATIONS, PLATS OR REPORTS TO WHICH THE SEAL OF A PROFESSIONAL ENGINEER HAS BEEN APPLIED. IF AN ITEM BEARING THE SEAL OF A PROFESSIONAL ENGINEER IS ALTERED, THE ALTERING ENGINEER SHALL AFFIX TO THE ITEM HIS SEAL AND THE NOTATION "ALTERED BY" FOLLOWED BY HIS SIGNATURE, THE DATE, AND A SPECIFIC DESCRIPTION OF THE ALTERATION.

REV	ISSUED FOR	DATE	BY

PROJECT ENGINEER:	R. FROST
DESIGNED BY:	R. FROST
DRAWN BY:	B. CASULL
CHECKED BY:	E. FELDMAN
IF THIS BAR DOES NOT MEASURE 1" THEN DRAWING IS NOT TO FULL SCALE	0 1/2" 1"

BID SET



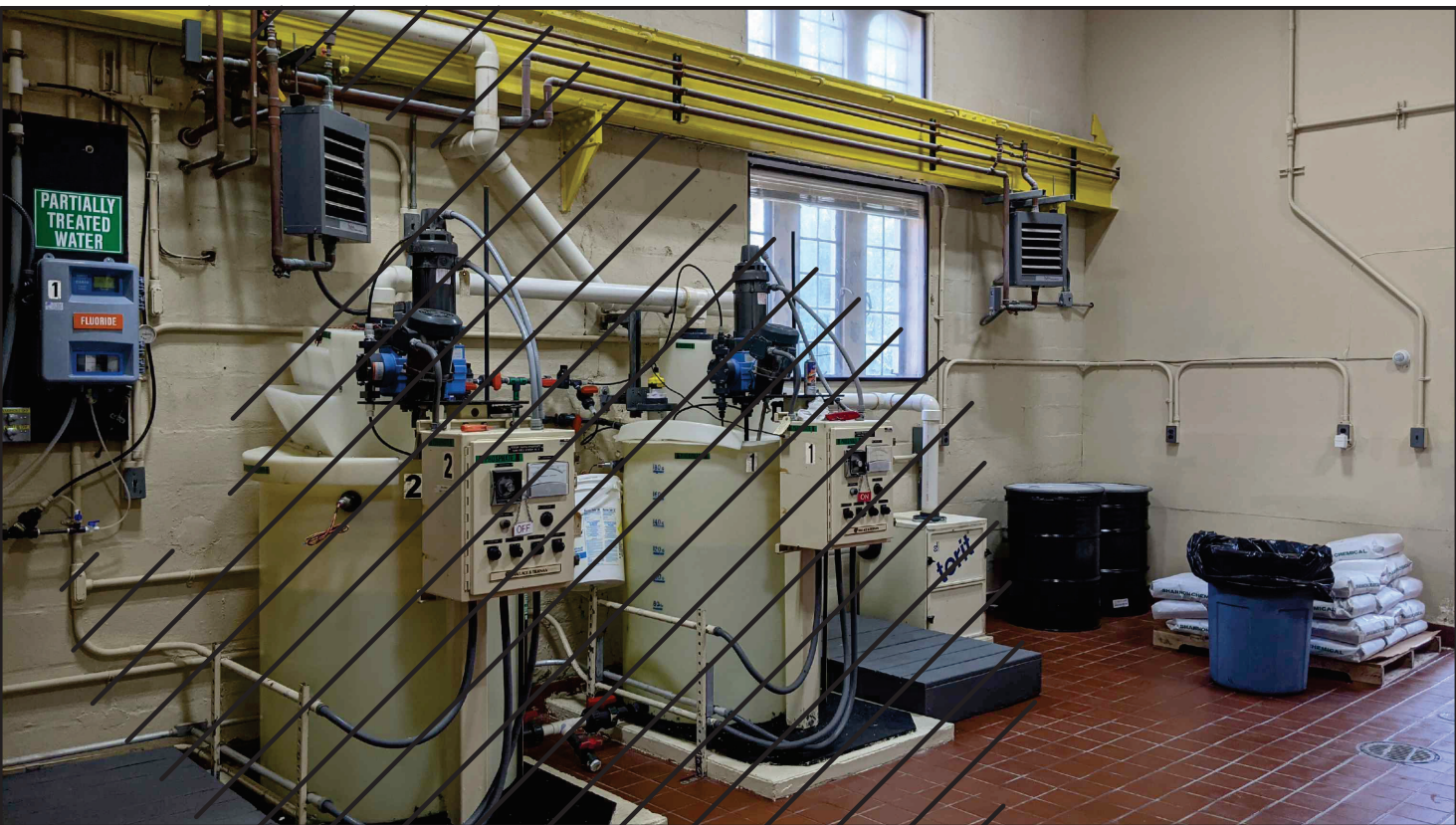
Hazen
HAZEN AND SAWYER
498 SEVENTH AVENUE, 11th FLOOR
NEW YORK, NEW YORK 10018

WESTCHESTER JOINT WATER WORKS
MAMARONECK, NY

RYE LAKE WATER FILTRATION PLANT
HARRISON, NY

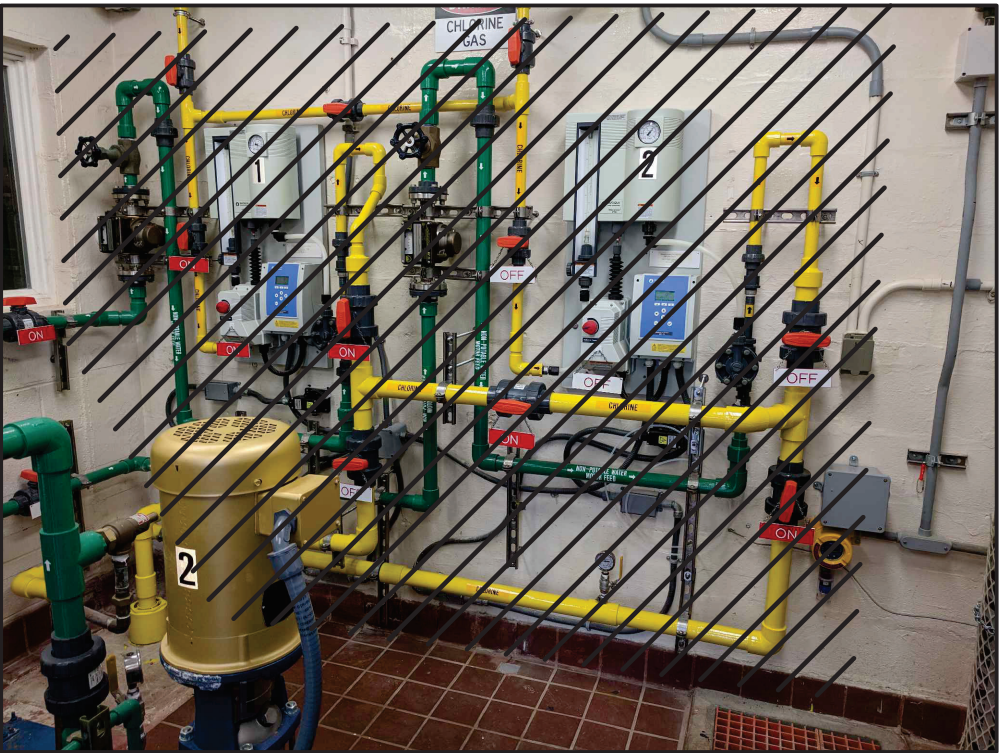
EXISTING RYE LAKE CHEMICAL BUILDING
DEMOLITION PLAN EL 358.50

DATE:	FEB 2025
HAZEN NO.:	90388-000
CONTRACT NO.:	A1364-A
DRAWING NUMBER:	D-501



ORTHOPHOSPHATE SYSTEMS

PHOTO	1
NO SCALE	D-501



CHLORINE FEED SYSTEM

PHOTO	2
NO SCALE	D-501



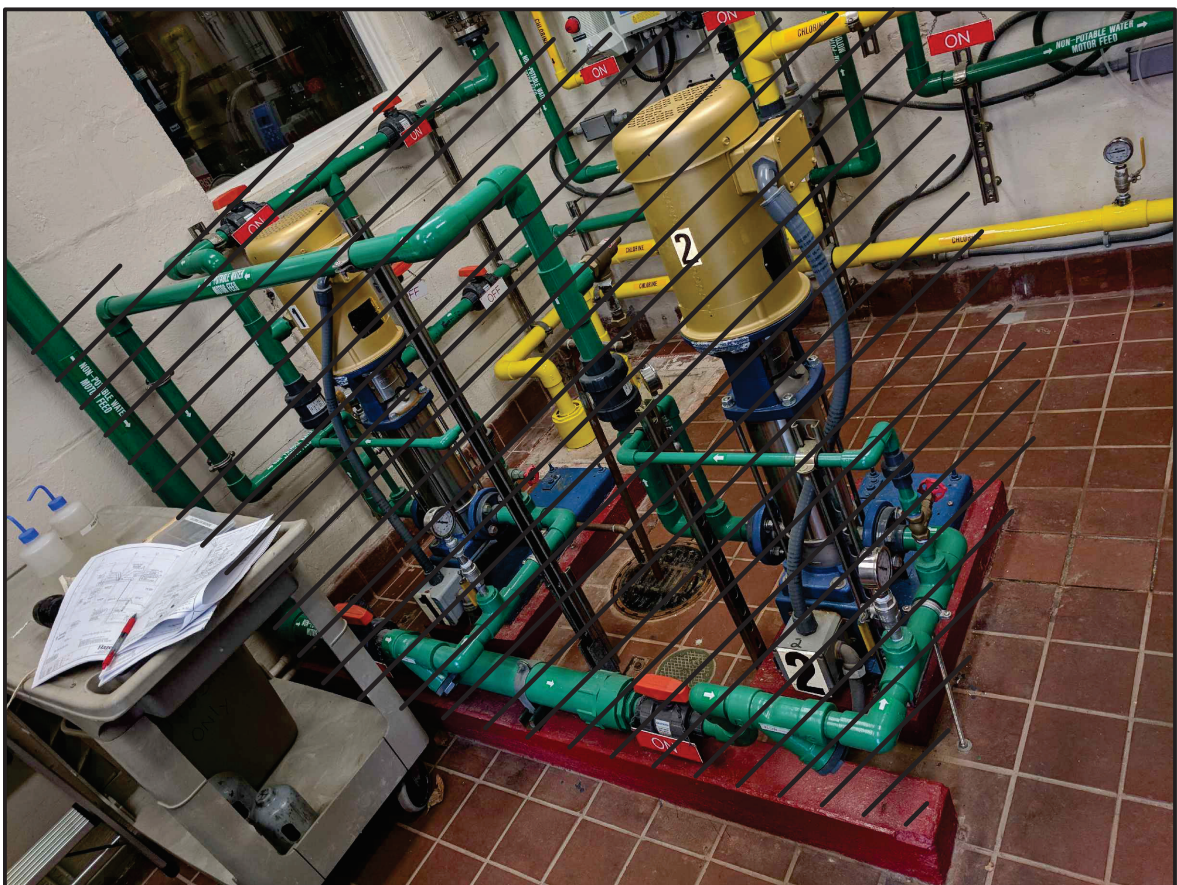
SPENT CHLORINE CYLINDER CLOSET

PHOTO	3
NO SCALE	D-501



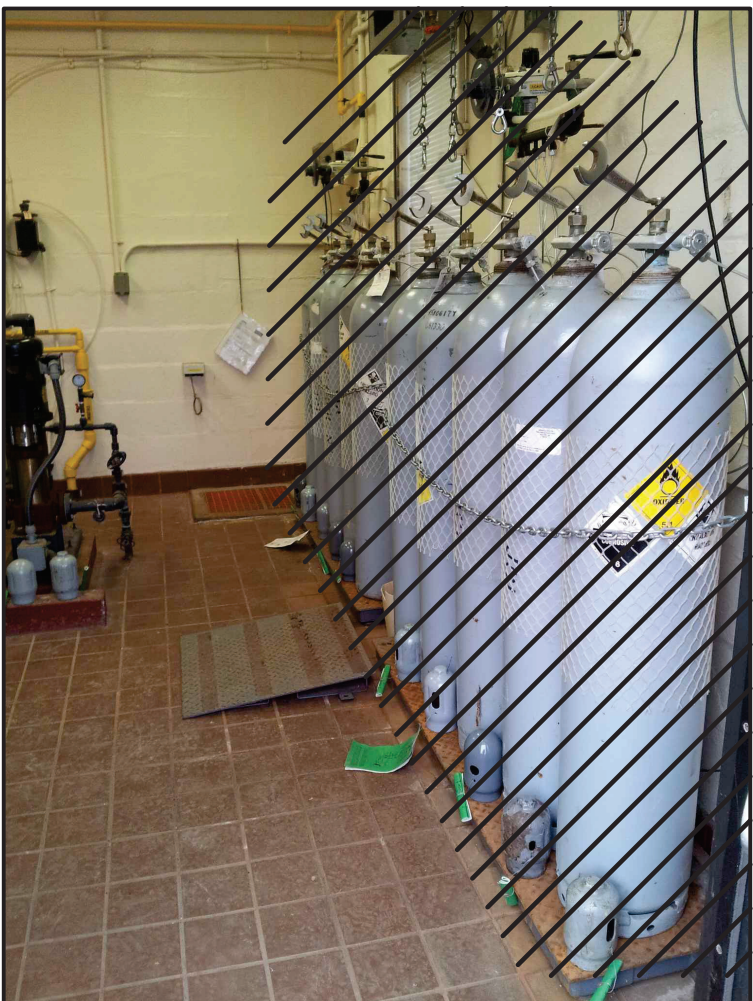
FLUORIDE HOPPER SYSTEMS

PHOTO	4
NO SCALE	D-501



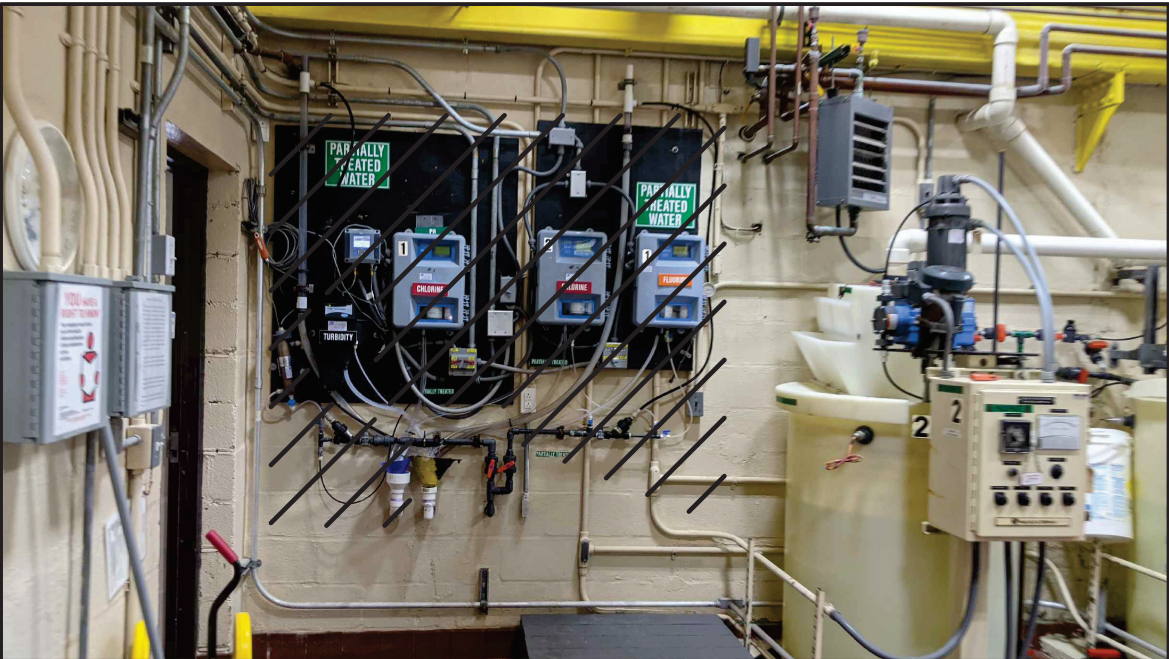
CHLORINE BOOSTER PUMPS

PHOTO	5
NO SCALE	D-501



CHLORINE CYLINDERS

PHOTO	6
NO SCALE	D-501



SAMPLE ANALYZER SYSTEMS

PHOTO	7
NO SCALE	D-501

1 0 1 2 3 7'
1/4"=1'-0"