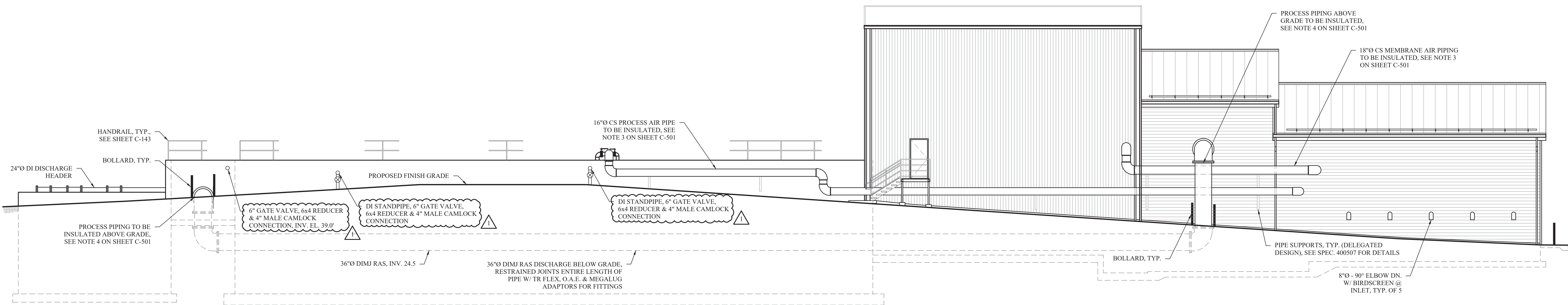


1  
C-502

MBR - LONGITUDINAL SECTION

SCALE: 1/8" = 1'-0"



2  
C-502

MBR - REAR ELEVATION

SCALE: 1/8" = 1'-0"

BID SET

**HAZARDOUS MATERIAL NOTE:**  
THE SERVICES PROVIDED BY MHE, INCLUDING ALL WORK DEPICTED ON MHE PLANS, DO NOT INCLUDE SERVICES RELATED TO THE IDENTIFICATION, CONTROLS OR HANDLING OF HAZARDOUS MATERIALS, INCLUDING SUCH MATERIALS AS ASBESTOS AND LEAD PAINT. ALL TESTING, IDENTIFICATION, ABATEMENT, CONTROLS, AND HANDLING OF HAZARDOUS MATERIALS SHALL BE UNDERTAKEN BY A HAZARDOUS MATERIAL CONSULTANT AND CERTIFIED PROFESSIONALS. IF SUCH MATERIALS HAVE BEEN IDENTIFIED, CONTRACTOR WILL COMMUNICATE DIRECTLY WITH HAZARDOUS MATERIAL PROFESSIONAL FOR THE PERFORMANCE OF ANY WORK ON OR ADJACENT TO SAID MATERIALS. IF UNIDENTIFIED MATERIALS OF CONCERN ARE ENCOUNTERED WHILE UNDERTAKING THE WORK SHOWN HEREON, CONTRACTOR SHALL IMMEDIATELY NOTIFY ENGINEER AND OWNER, AND SHALL OBTAIN DIRECTION FROM THE HAZARDOUS MATERIAL CONSULTANT PRIOR TO THE CONTINUATION OF WORK INVOLVING SUSPECTED MATERIAL.

REVISIONS		
NO.	DESCRIPTION	DATE
1	ADDENDUM 2	06/20/25

ISSUED DATE:	18 APR. 2025
DESIGN BY:	JTW
DRAWN BY:	HPBH
CHECKED BY:	MWW
REVIEWED BY:	MJS, JZ



BID SET

**HAZARDOUS MATERIAL NOTE:**  
THE SERVICES PROVIDED BY MHE, INCLUDING ALL WORK DEPICTED ON MHE PLANS, DO NOT INCLUDE SERVICES RELATED TO THE IDENTIFICATION, CONTROLS OR HANDLING OF HAZARDOUS MATERIALS, INCLUDING SUCH MATERIALS AS ASBESTOS AND LEAD PAINT. ALL TESTING, IDENTIFICATION, ABATEMENT, CONTROLS, AND HANDLING OF HAZARDOUS MATERIALS SHALL BE UNDERTAKEN BY A HAZARDOUS MATERIAL CONSULTANT AND CERTIFIED PROFESSIONALS. IF SUCH MATERIALS HAVE BEEN IDENTIFIED, CONTRACTOR WILL COMMUNICATE DIRECTLY WITH HAZARDOUS MATERIAL PROFESSIONAL FOR THE PERFORMANCE OF ANY WORK ON OR ADJACENT TO SAID MATERIALS. IF UNIDENTIFIED MATERIALS OF CONCERN ARE ENCOUNTERED WHILE UNDERTAKING THE WORK SHOWN HEREON, CONTRACTOR SHALL IMMEDIATELY NOTIFY ENGINEER AND OWNER, AND SHALL OBTAIN DIRECTION FROM THE HAZARDOUS MATERIAL CONSULTANT PRIOR TO THE CONTINUATION OF WORK INVOLVING SUSPECTED MATERIAL.



UNAUTHORIZED ADDITION OR ALTERATION OF THIS PLAN IS A VIOLATION OF SECTION 7209(2) OF THE NEW YORK STATE EDUCATION LAW.

ALL PRODUCTION & INTELLECTUAL PROPERTY RIGHT RESERVED ©

**CAESARS LANE WWTP  
EXPANSION PROJECT:  
PHASE 2**  
145 CAESARS LN.  
NEW WINDSOR, NY 12553  
FOR TOWN OF NEW WINDSOR  
555 UNION AVE.  
NEW WINDSOR, NY 12553

**MBR - INFLUENT PUMPS  
& MICROSCREEN PLAN**

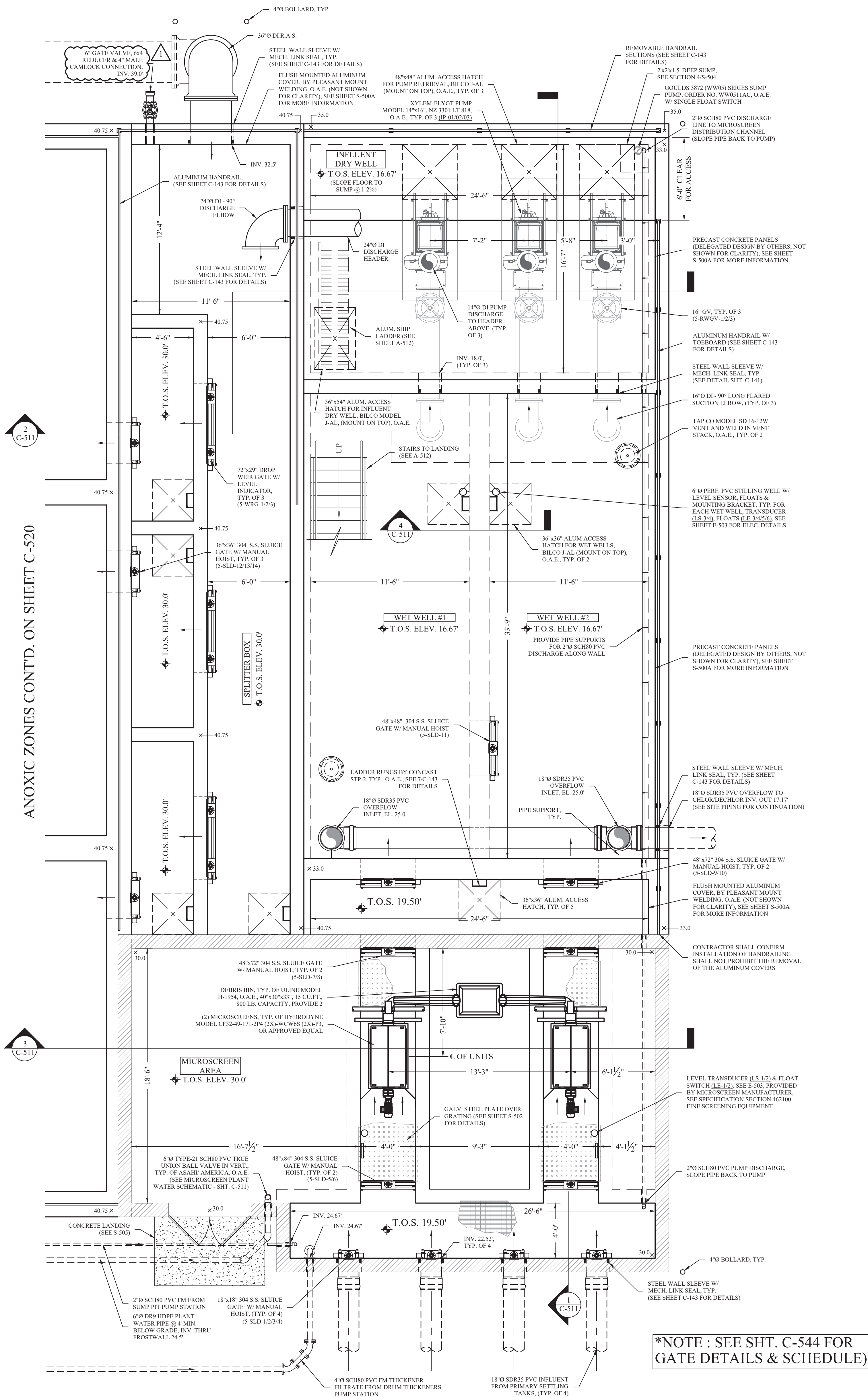
REVISIONS		
NO.	DESCRIPTION	DATE
1	ADDENDUM 2	06/20/25

ISSUED DATE: 18 APR. 2025  
DESIGN BY: JTW  
DRAWN BY: HPBH  
CHECKED BY: MWW  
REVIEWED BY: MJS, JZ

SHEET NO.

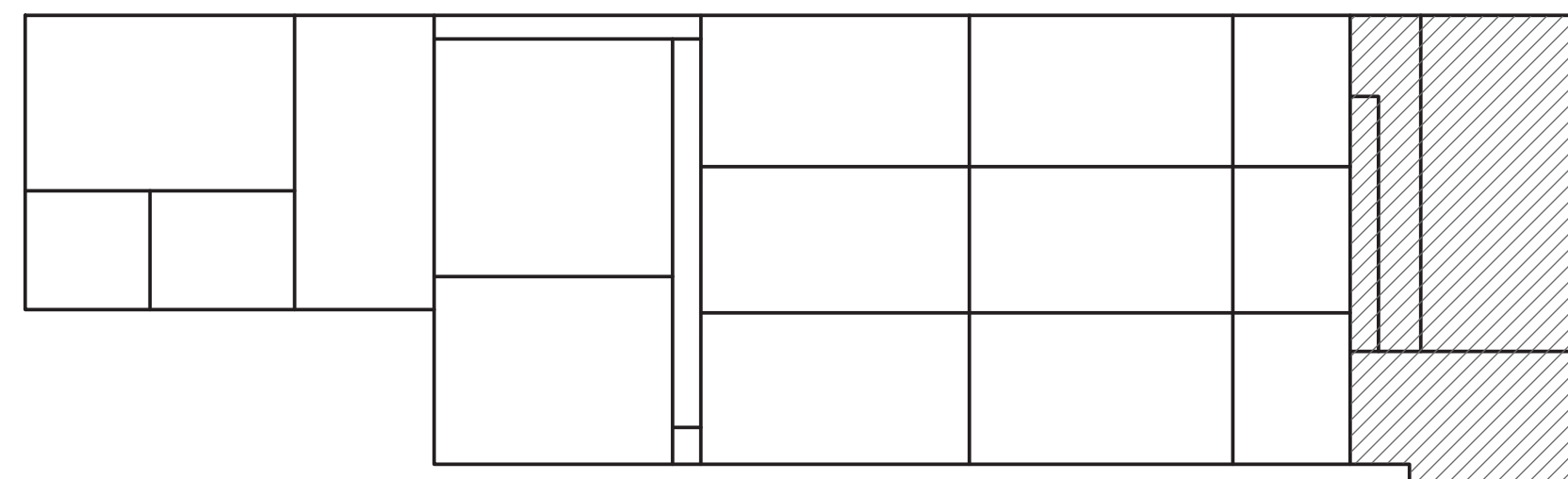
C-510

PROJECT # 18-732 PHASE #



\*NOTE : SEE SHT. C-544 FOR GATE DETAILS & SCHEDULE)

**MBR - INFLUENT PUMPS & MICROSCREEN PLAN**  
SCALE: 1/4" = 1'-0"



**KEY PLAN**  
SCALE: 1/32" = 1'-0"



BID SET

**HAZARDOUS MATERIAL NOTE:**  
THE SERVICES PROVIDED BY MHE, INCLUDING ALL WORK DEPICTED ON MHE PLANS, DO NOT INCLUDE SERVICES RELATED TO THE IDENTIFICATION, CONTROLS OR HANDLING OF HAZARDOUS MATERIALS, INCLUDING SUCH MATERIALS AS ASBESTOS AND LEAD PAINT. ALL TESTING, IDENTIFICATION, ABATEMENT, CONTROLS, AND HANDLING OF HAZARDOUS MATERIALS SHALL BE UNDERTAKEN BY A HAZARDOUS MATERIAL CONSULTANT AND CERTIFIED PROFESSIONALS. IF SUCH MATERIALS HAVE BEEN IDENTIFIED, CONTRACTOR WILL COMMUNICATE DIRECTLY WITH HAZARDOUS MATERIAL PROFESSIONAL FOR THE PERFORMANCE OF ANY WORK ON OR ADJACENT TO SAID MATERIALS. IF UNIDENTIFIED MATERIALS OF CONCERN ARE ENCOUNTERED WHILE UNDERTAKING THE WORK SHOWN HEREON, CONTRACTOR SHALL IMMEDIATELY NOTIFY ENGINEER AND OWNER, AND SHALL OBTAIN DIRECTION FROM THE HAZARDOUS MATERIAL CONSULTANT PRIOR TO THE CONTINUATION OF WORK INVOLVING SUSPECTED MATERIAL.



UNAUTHORIZED ADDITION OR ALTERATION OF THIS PLAN IS A VIOLATION OF SECTION 7209(2) OF THE NEW YORK STATE EDUCATION LAW.

ALL PRODUCTION & INTELLECTUAL PROPERTY RIGHT RESERVED ©

**CAESARS LANE WWTP  
EXPANSION PROJECT:  
PHASE 2**  
145 CAESARS LN.  
NEW WINDSOR, NY 12553  
FOR TOWN OF NEW WINDSOR  
555 UNION AVE.  
NEW WINDSOR, NY 12553

MBR - ANOXIC ZONE  
TANK PLAN, SECTIONS  
& DETAILS

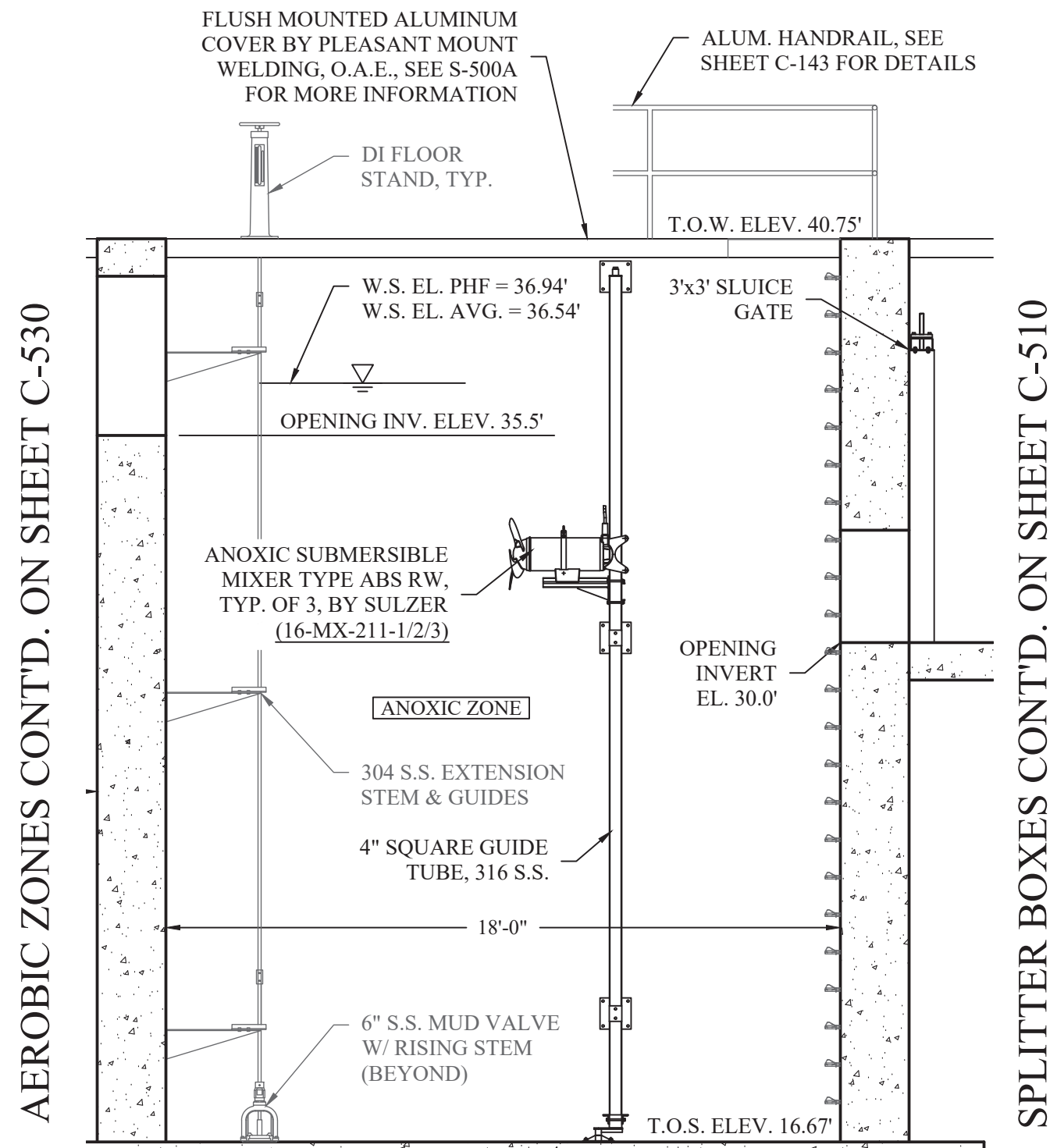
REVISIONS		
NO.	DESCRIPTION	DATE
1	ADDENDUM 2	06/20/25

ISSUED DATE: 18 APR, 2025  
DESIGN BY: JTW  
DRAWN BY: HPBH  
CHECKED BY: MWW  
REVIEWED BY: MJS, JZ

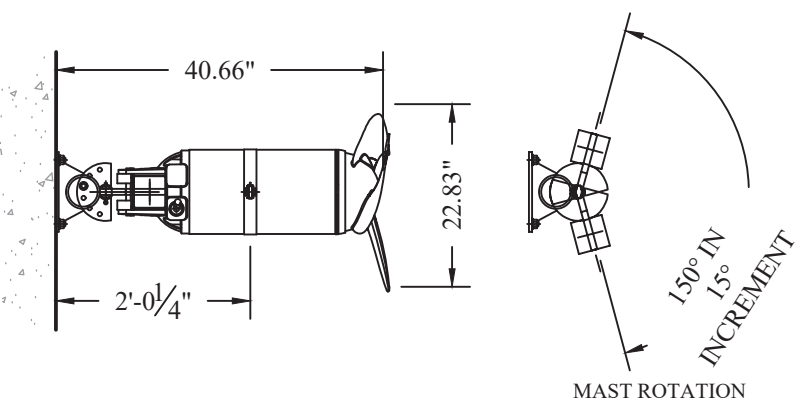
SHEET NO.

C-520

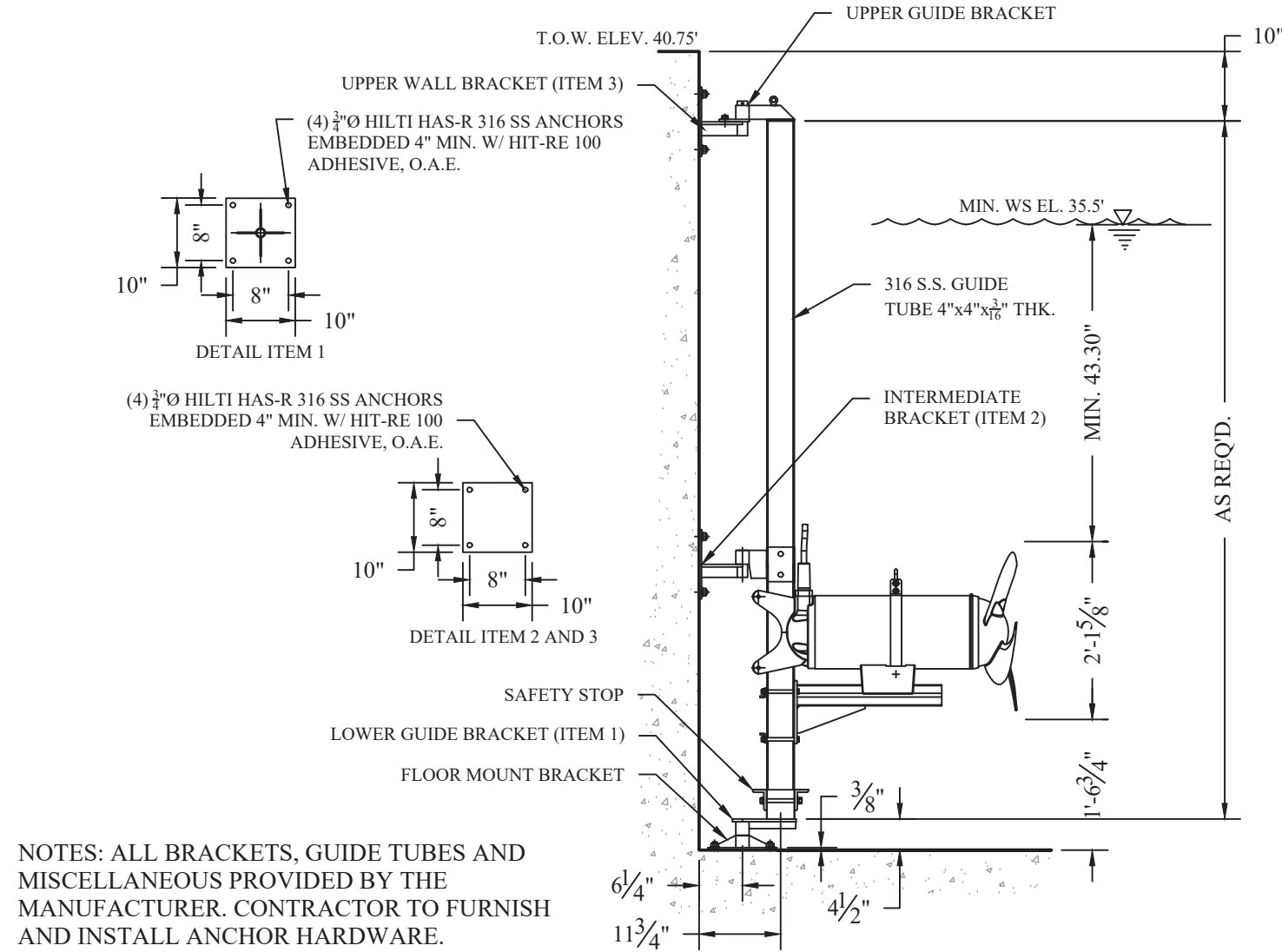
PROJECT # 18-732 PHASE #



SECTION  
1  
C-520  
SCALE: 1/4" = 1'-0"



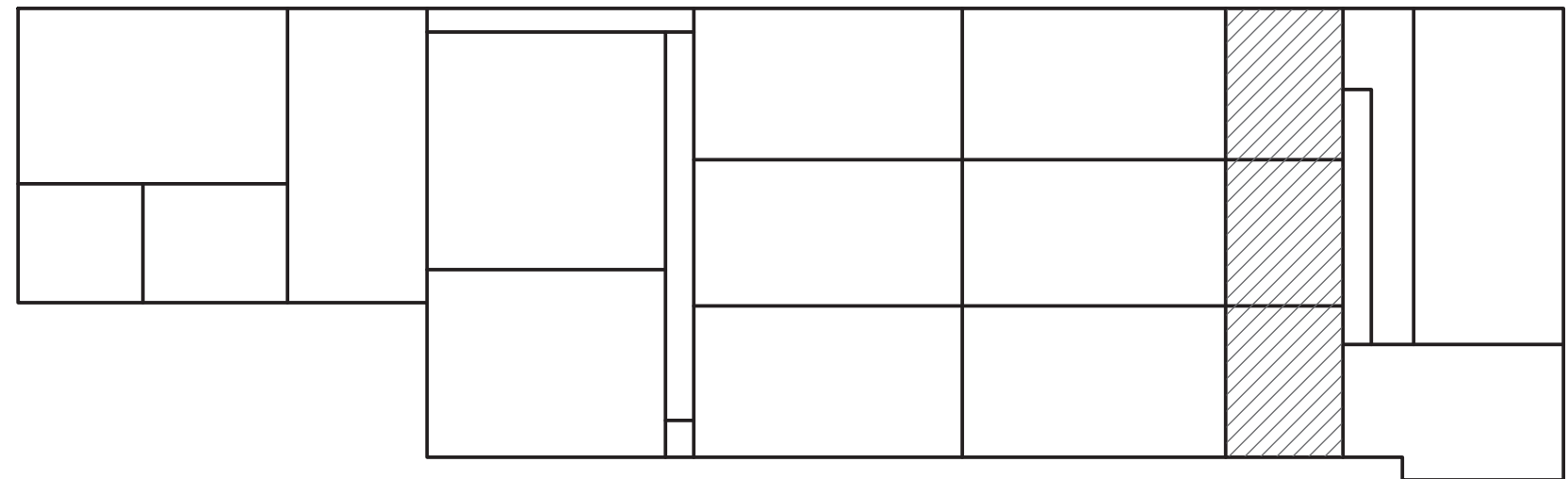
PLAN VIEW DETAILS



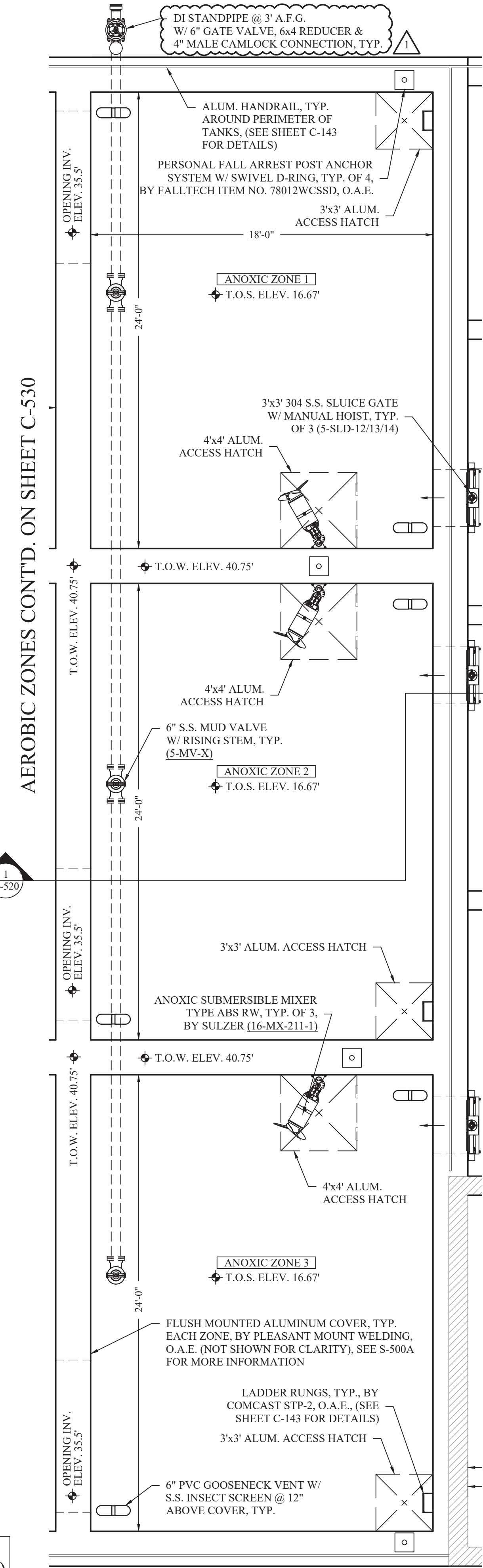
NOTES: ALL BRACKETS, GUIDE TUBES AND MISCELLANEOUS PROVIDED BY THE MANUFACTURER. CONTRACTOR TO FURNISH AND INSTALL ANCHOR HARDWARE.

ELEVATION VIEW DETAILS  
2  
C-520  
SCALE: 1/2" = 1'-0" (PROVIDED BY VEOLIA)

\*NOTE : SEE SHT. C-544 FOR  
GATE DETAILS & SCHEDULE)



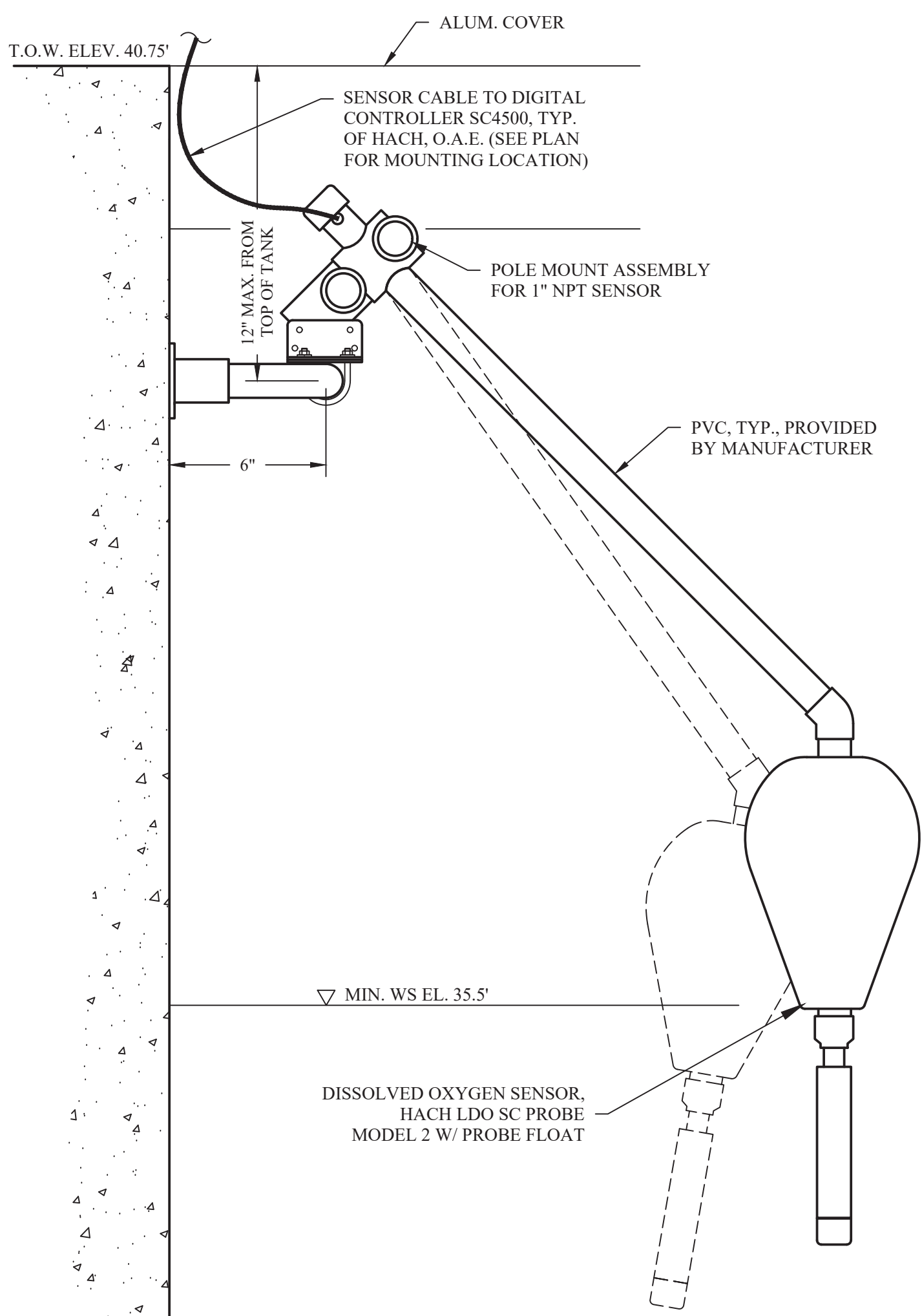
KEY PLAN  
SCALE: 1/32" = 1'-0"



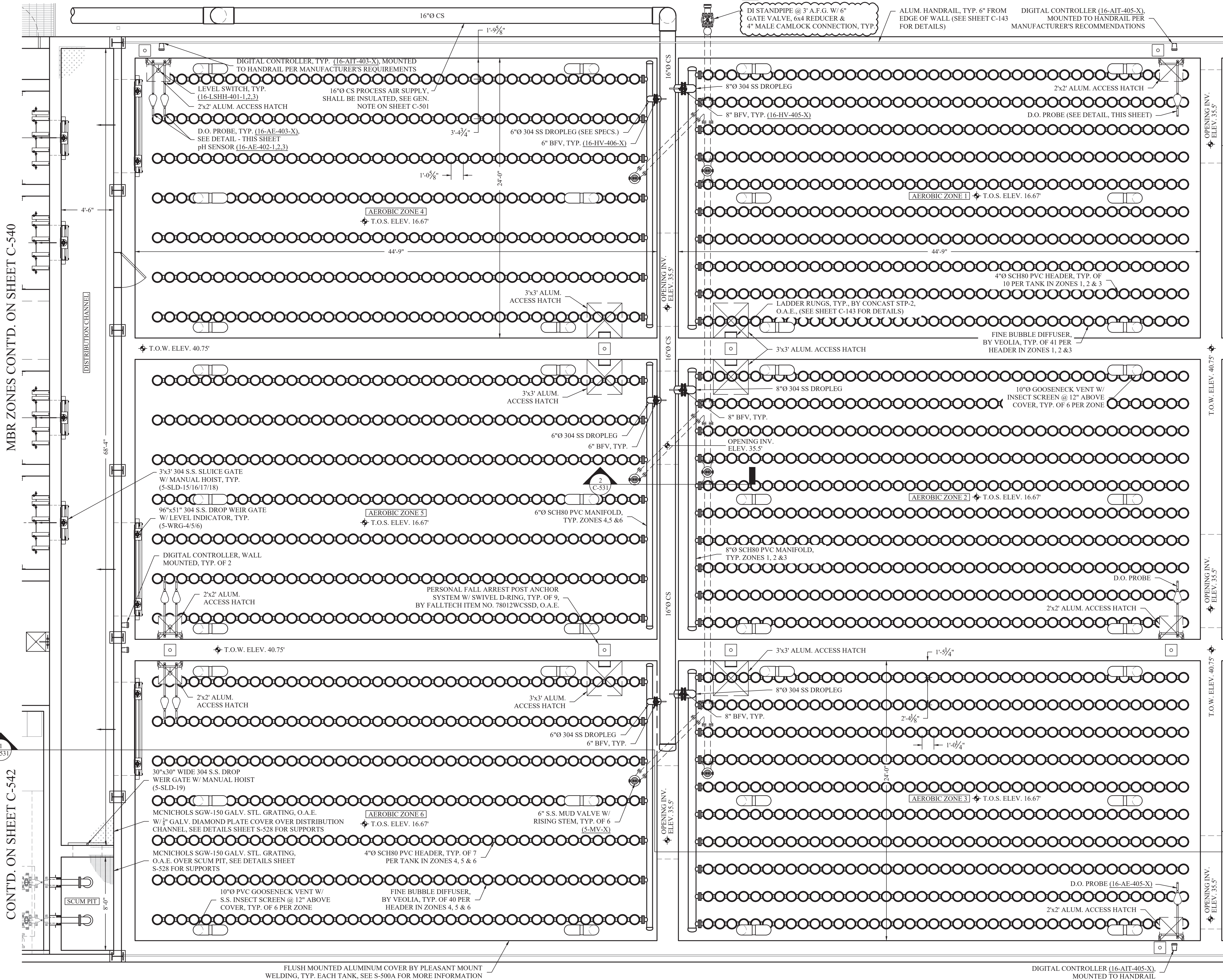
MBR - ANOXIC ZONE TANK PLAN  
A  
C-520  
SCALE: 1/4" = 1'-0"



C:\2018\16-752 Caesars Lane WWTP Improvements\Expansion Phase\Drawings\ C-530.dwg C:\2018\16-752 Caesars Lane WWTP Improvements\Expansion Phase\Drawings\ C-530.dwg C:\2018\16-752 Caesars Lane WWTP Improvements\Expansion Phase\Drawings\ C-530.dwg



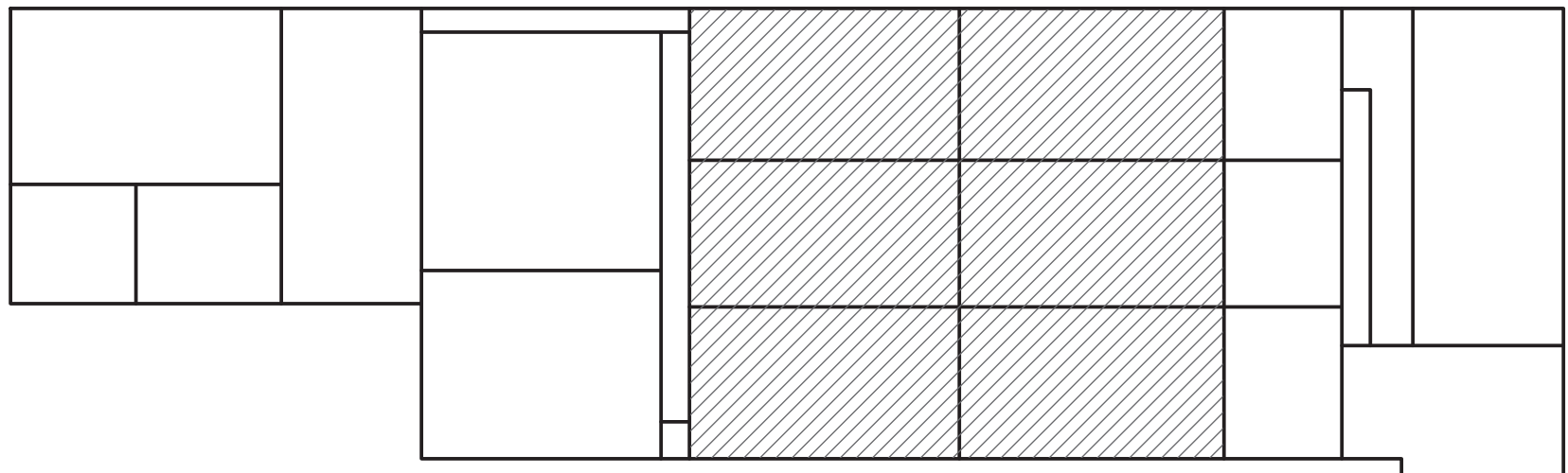
**1 D.O. PROBE/pH SENSOR FLOAT MOUNT DETAIL**  
SCALE: NONE (PROVIDED BY VEOLIA)  
NOTE: CONTRACTOR TO INSTALL AND MOUNT IN ACCORDANCE WITH MANUFACTURER'S MOUNTING INSTALLATION. MOUNTING BRACKET, ANCHORS AND HARDWARE SUPPLIED BY MANUFACTURER. FURNISHED BY VEOLIA AND SUPPLIED BY MANUFACTURER.



**A MBR - AEROBIC ZONE TANK PLAN**  
SCALE: 1/4" = 1'-0"

- NOTES:
- ALL CARBON STEEL AND STAINLESS STEEL PIPE SHALL COMPLY WITH ASTM A53.
  - ALL CARBON STEEL AND STAINLESS STEEL PIPE SHALL BE WELDED.
  - ALL FITTINGS SHALL COMPLY WITH ASTM A234-WPB.

**\*NOTE : SEE SHT. C-544 FOR GATE DETAILS & SCHEDULE)**



**KEY PLAN**  
SCALE: 1/32" = 1'-0"

**BID SET**

**HAZARDOUS MATERIAL NOTE:**  
THE SERVICES PROVIDED BY MHE, INCLUDING ALL WORK DEPICTED ON MHE PLANS, DO NOT INCLUDE SERVICES RELATED TO THE IDENTIFICATION, CONTROLS OR HANDLING OF HAZARDOUS MATERIALS, INCLUDING SUCH MATERIALS AS ASBESTOS AND LEAD PAINT. ALL TESTING, IDENTIFICATION, ABATEMENT, CONTROLS, AND HANDLING OF HAZARDOUS MATERIALS SHALL BE UNDERTAKEN BY A HAZARDOUS MATERIAL CONSULTANT AND CERTIFIED PROFESSIONALS. IF SUCH MATERIALS HAVE BEEN IDENTIFIED, CONTRACTOR WILL COMMUNICATE DIRECTLY WITH HAZARDOUS MATERIAL PROFESSIONAL FOR THE PERFORMANCE OF ANY WORK ON OR ADJACENT TO SAID MATERIALS. IF UNIDENTIFIED MATERIALS OF CONCERN ARE ENCOUNTERED WHILE UNDERTAKING THE WORK SHOWN HEREON, CONTRACTOR SHALL IMMEDIATELY NOTIFY ENGINEER AND OWNER, AND SHALL OBTAIN DIRECTION FROM THE HAZARDOUS MATERIAL CONSULTANT PRIOR TO THE CONTINUATION OF WORK INVOLVING SUSPECTED MATERIAL.

UNAUTHORIZED ADDITION OR ALTERATION OF THIS PLAN IS A VIOLATION OF SECTION 7209(2) OF THE NEW YORK STATE EDUCATION LAW.

ALL PRODUCTION & INTELLECTUAL PROPERTY RIGHT RESERVED ©

**CAESARS LANE WWTP EXPANSION PROJECT:**  
**PHASE 2**  
145 CAESARS LN.  
NEW WINDSOR, NY 12553  
FOR TOWN OF NEW WINDSOR  
555 UNION AVE.  
NEW WINDSOR, NY 12553

**MBR - AEROBIC ZONE TANK PLAN**

REVISIONS		
NO.	DESCRIPTION	DATE
1	ADDENDUM 2	06/20/25

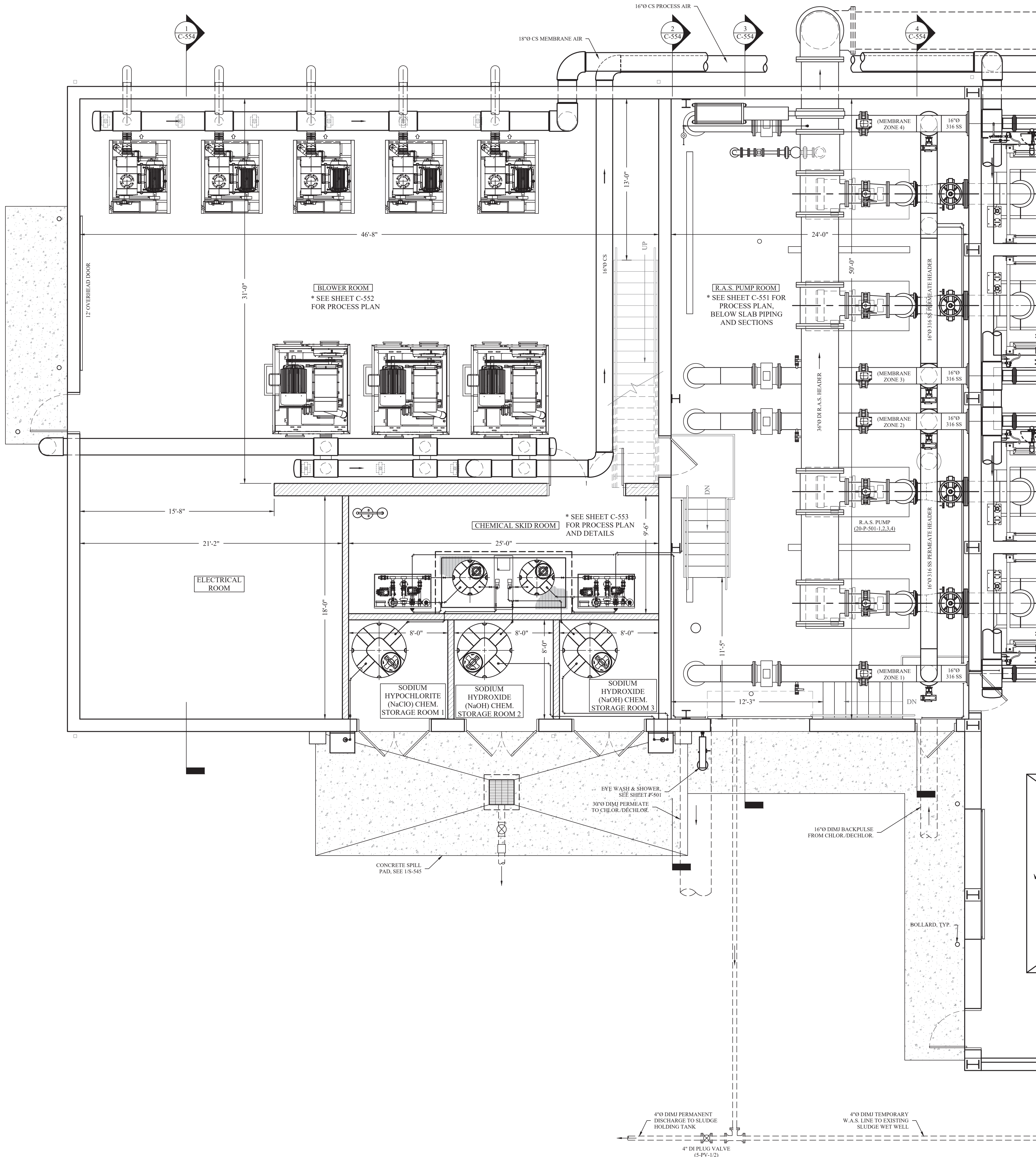
ISSUED DATE:	18 APR. 2025
DESIGN BY:	JTW
DRAWN BY:	HPBH
CHECKED BY:	MWW
REVIEWED BY:	MJS, JZ

SHEET NO.

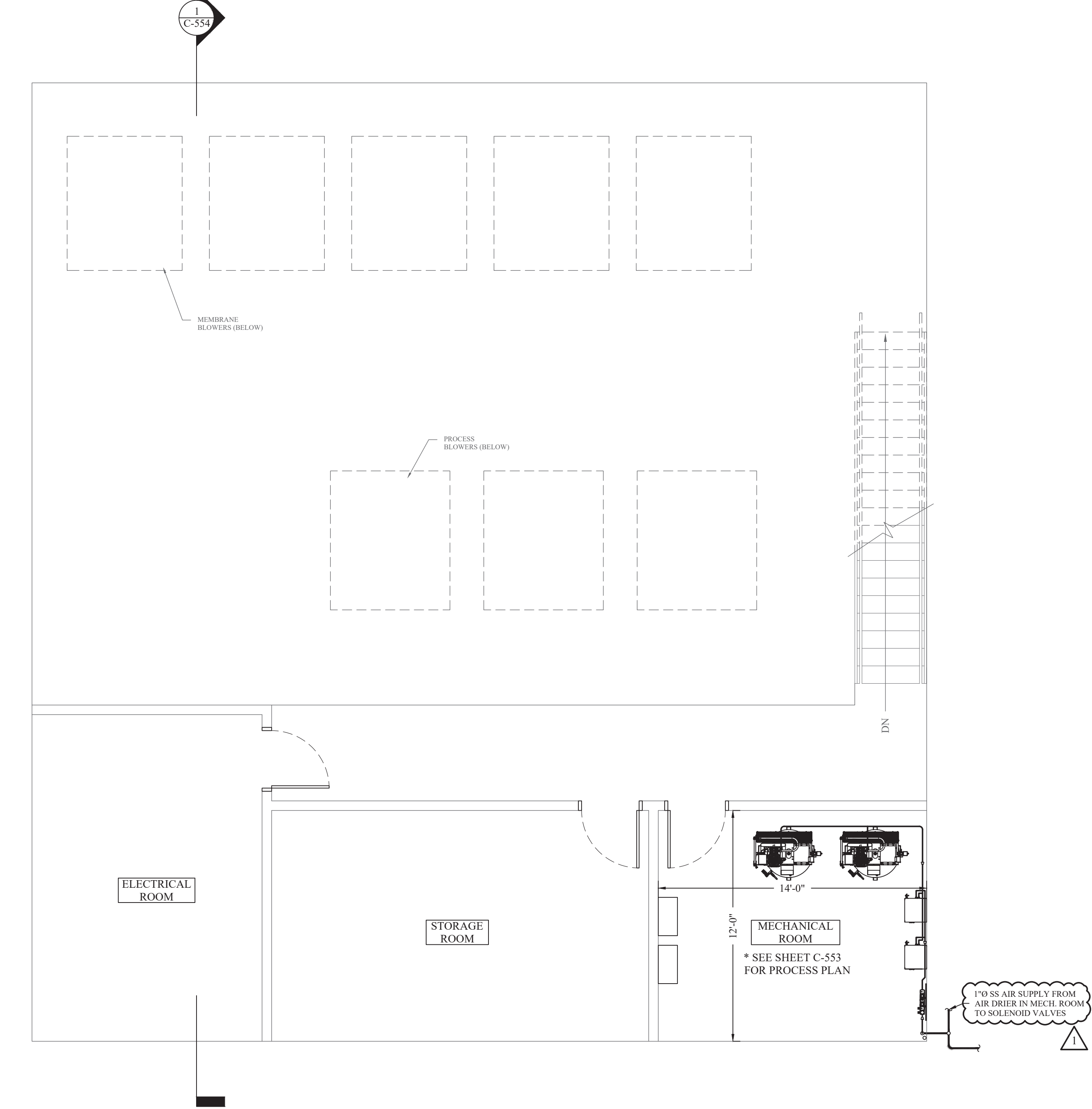
**C-530**



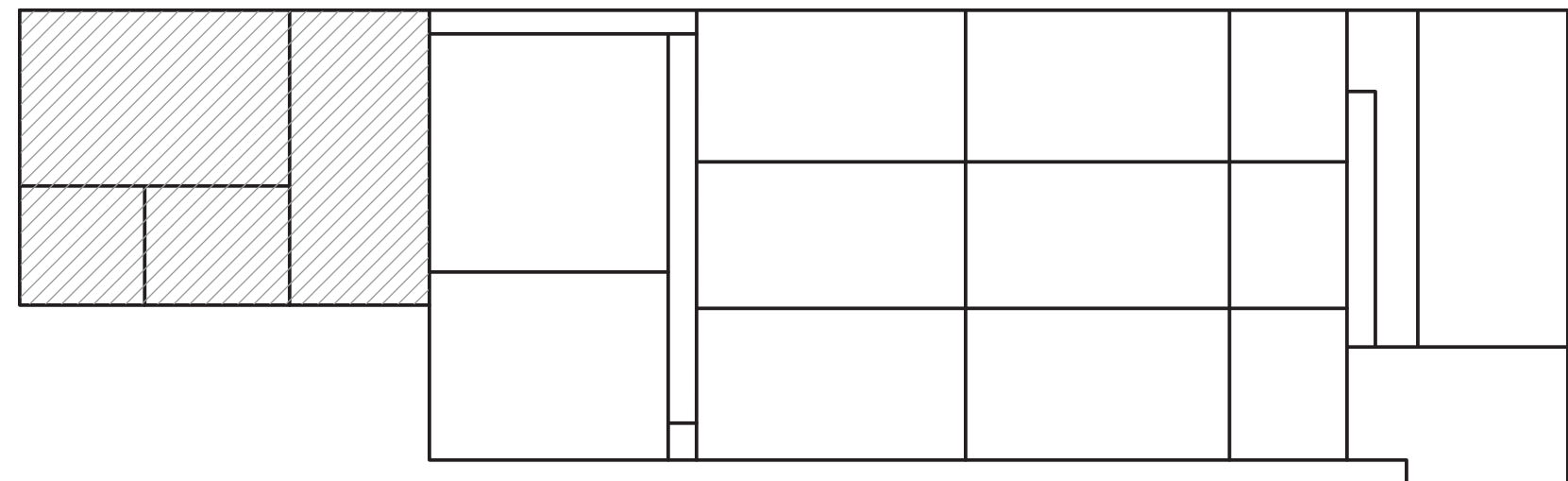
P:\2018\18-732 Caesars Lane WWTP Improvements\Expansion Phase\Drawings\ C-550\ C-550.dwg, C-550, 02/03/2025, 10:50:52 AM



A  
C-550  
MBR - FIRST FLOOR PROCESS PLAN  
SCALE: 1/4" = 1'-0"



B  
C-550  
MBR - SECOND FLOOR PLAN  
SCALE: 1/4" = 1'-0"



KEY PLAN  
SCALE: 1/32" = 1'-0"

BID SET

**HAZARDOUS MATERIAL NOTE:**  
THE SERVICES PROVIDED BY MHE, INCLUDING ALL WORK DEPICTED ON MHE PLANS, DO NOT INCLUDE SERVICES RELATED TO THE IDENTIFICATION, CONTROLS OR HANDLING OF HAZARDOUS MATERIALS, INCLUDING SUCH MATERIALS AS ASBESTOS AND LEAD PAINT. ALL TESTING, IDENTIFICATION, ABATEMENT, CONTROLS, AND HANDLING OF HAZARDOUS MATERIALS SHALL BE UNDERTAKEN BY A HAZARDOUS MATERIAL CONSULTANT AND CERTIFIED PROFESSIONALS. IF SUCH MATERIALS HAVE BEEN IDENTIFIED, CONTRACTOR WILL COMMUNICATE DIRECTLY WITH HAZARDOUS MATERIAL PROFESSIONAL FOR THE PERFORMANCE OF ANY WORK ON OR ADJACENT TO SAID MATERIALS. IF UNIDENTIFIED MATERIALS OF CONCERN ARE ENCOUNTERED WHILE UNDERTAKING THE WORK SHOWN HEREON, CONTRACTOR SHALL IMMEDIATELY NOTIFY ENGINEER AND OWNER, AND SHALL OBTAIN DIRECTION FROM THE HAZARDOUS MATERIAL CONSULTANT PRIOR TO THE CONTINUATION OF WORK INVOLVING SUSPECTED MATERIAL.

UNAUTHORIZED ADDITION OR ALTERATION OF THIS PLAN IS A VIOLATION OF SECTION 7209(2) OF THE NEW YORK STATE EDUCATION LAW.

ALL PRODUCTION & INTELLECTUAL PROPERTY RIGHT RESERVED ©

**CAESARS LANE WWTP  
EXPANSION PROJECT:  
PHASE 2**  
145 CAESARS LN.  
NEW WINDSOR, NY 12553  
FOR TOWN OF NEW WINDSOR  
555 UNION AVE.  
NEW WINDSOR, NY 12553

**MBR - FIRST FLOOR  
PROCESS PLAN AND  
SECOND FLOOR PLAN**

REVISIONS		
NO.	DESCRIPTION	DATE
1	ADDENDUM 2	06/20/25

ISSUED DATE: 18 APR, 2025  
DESIGN BY: JTW  
DRAWN BY: HPBH  
CHECKED BY: MWW  
REVIEWED BY: MJS, JZ

SHEET NO.

**C-550**

PROJECT # 18-732 PHASE #







[illegible]

ISSUED DATE:	18 APR, 2025
DESIGN BY:	JTW
DRAWN BY:	HPBJr
CHECKED BY:	MWW
REVIEWED BY:	MJS, JZ
SHEET NO.	



**BID SET**

**HAZARDOUS MATERIAL NOTE:**  
THE SERVICES PROVIDED BY MHE, INCLUDING ALL WORK DEPICTED ON MHE PLANS, DO NOT INCLUDE SERVICES RELATED TO THE IDENTIFICATION, CONTROLS OR HANDLING OF HAZARDOUS MATERIALS, INCLUDING SUCH MATERIALS AS ASBESTOS AND LEAD PAINT. ALL TESTING, IDENTIFICATION, ABATEMENT, CONTROLS, AND HANDLING OF HAZARDOUS MATERIALS SHALL BE UNDERTAKEN BY A HAZARDOUS MATERIAL CONSULTANT AND CERTIFIED PROFESSIONALS. IF SUCH MATERIALS HAVE BEEN IDENTIFIED, CONTRACTOR WILL COMMUNICATE DIRECTLY WITH HAZARDOUS MATERIAL PROFESSIONAL FOR THE PERFORMANCE OF ANY WORK ON OR ADJACENT TO SAID MATERIALS. IF UNIDENTIFIED MATERIALS OF CONCERN ARE ENCOUNTERED WHILE UNDERTAKING THE WORK SHOWN HEREON, CONTRACTOR SHALL IMMEDIATELY NOTIFY ENGINEER AND OWNER, AND SHALL OBTAIN DIRECTION FROM THE HAZARDOUS MATERIAL CONSULTANT PRIOR TO THE CONTINUATION OF WORK INVOLVING SUSPECTED MATERIAL.



UNAUTHORIZED ADDITION OR ALTERATION OF THIS PLAN IS A VIOLATION OF SECTION 7209(2) OF THE NEW YORK STATE EDUCATION LAW.

ALL PRODUCTION & INTELLECTUAL PROPERTY RIGHT RESERVED ©

**CAESARS LANE WWTP  
EXPANSION PROJECT:  
PHASE 2**  
145 CAESARS LN.  
NEW WINDSOR, NY 12553  
FOR TOWN OF NEW WINDSOR  
555 UNION AVE.  
NEW WINDSOR, NY 12553

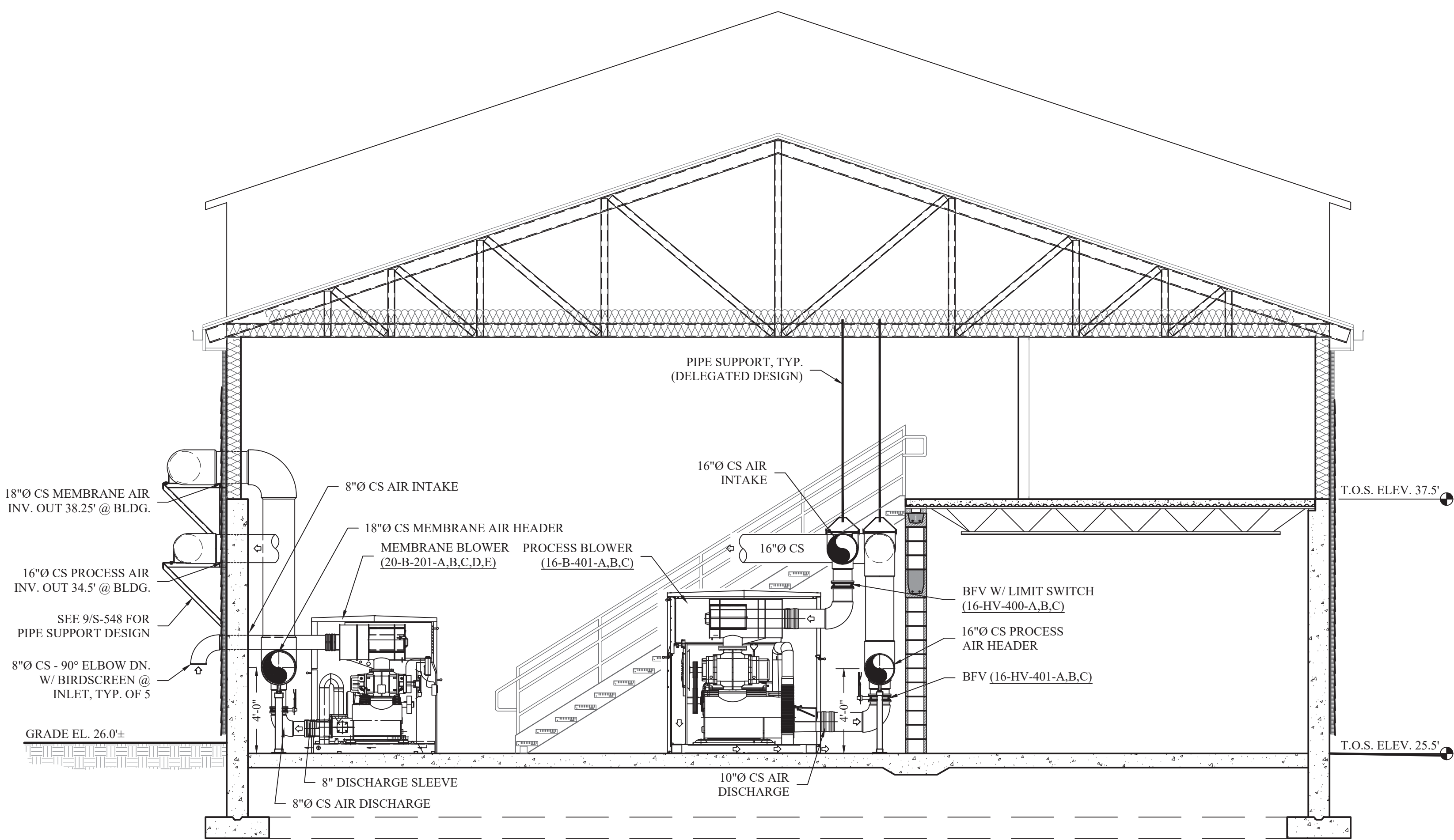
**MBR SECTIONS &  
PIPE ELEVATIONS**

REVISIONS		
NO.	DESCRIPTION	DATE
1	ADDENDUM 2	06/20/25

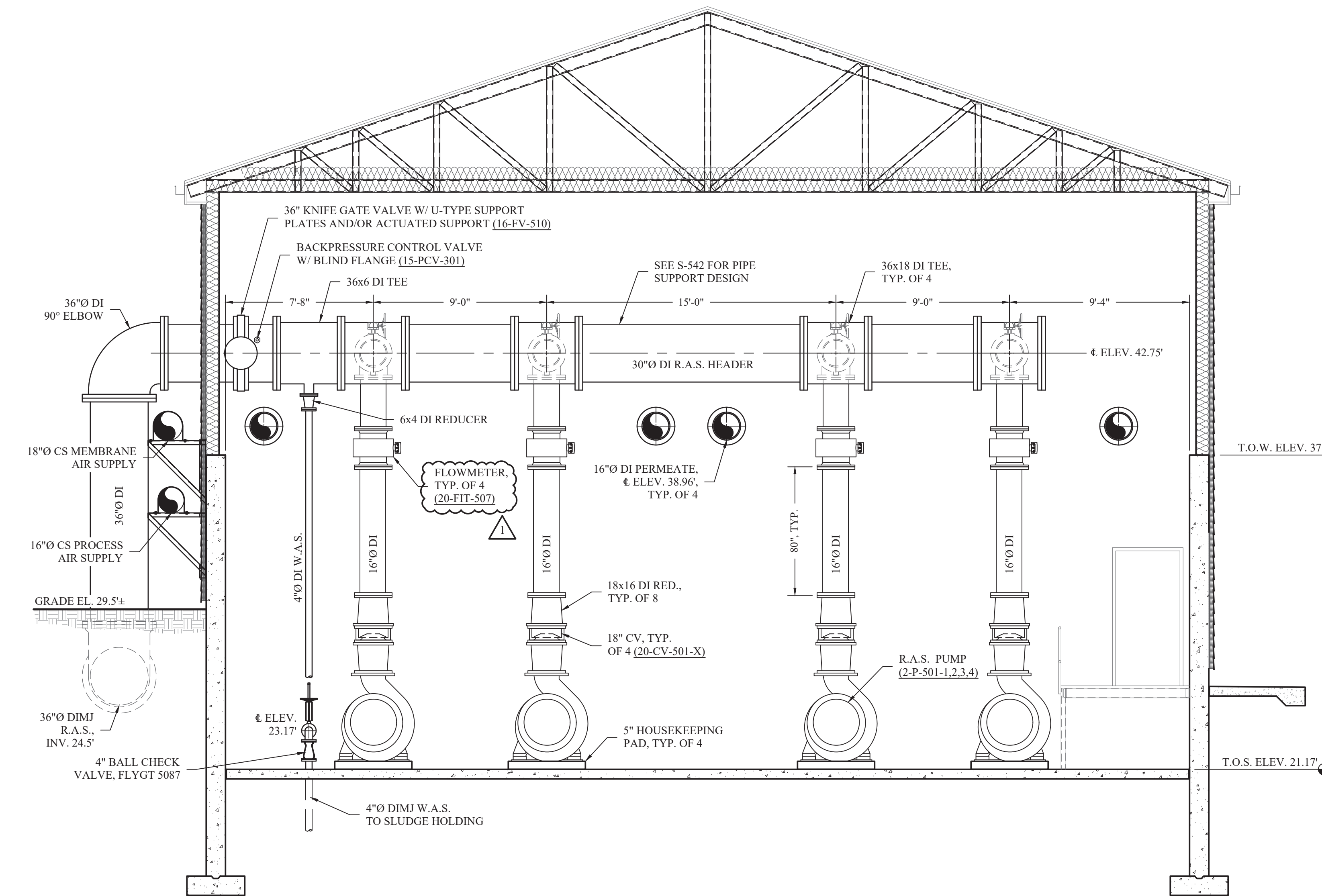
ISSUED DATE:	18 APR. 2025
DESIGN BY:	JTW
DRAWN BY:	HPBH
CHECKED BY:	MWW
REVIEWED BY:	MJS, JZ
SHEET NO.	

**C-554**

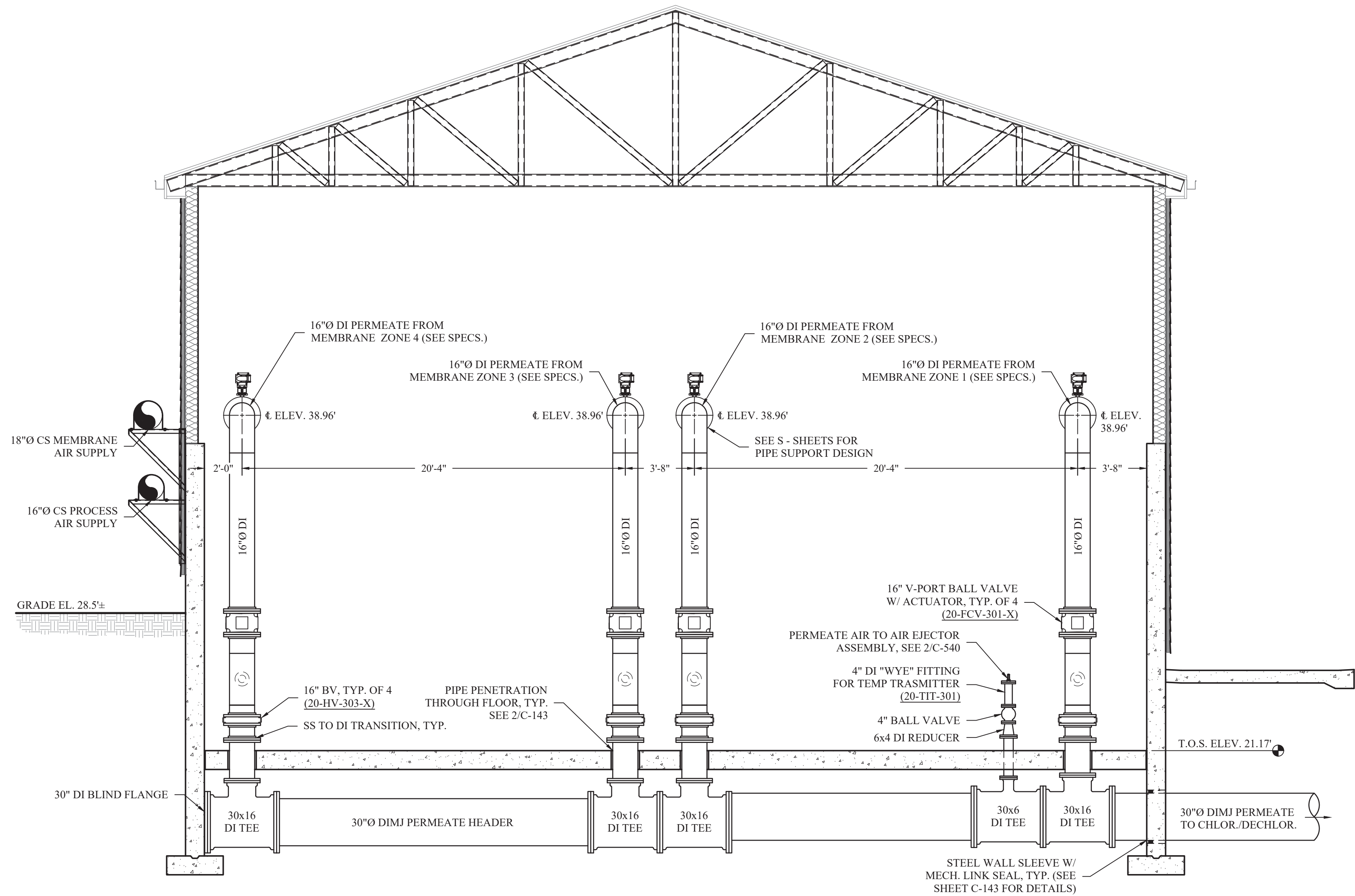
PROJECT # 18-732 PHASE #



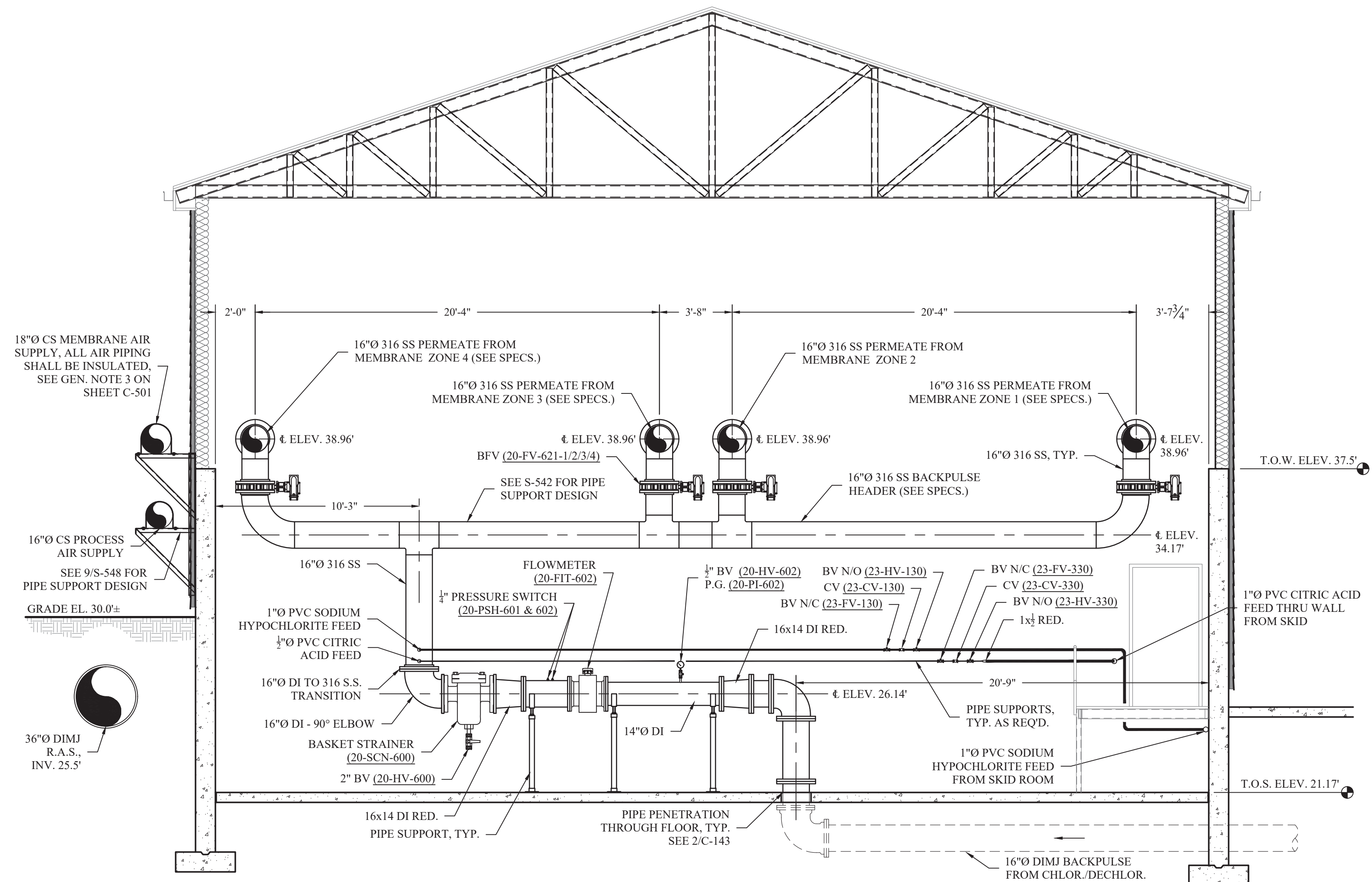
**1 SECTION THRU BLOWER ROOM**  
SCALE: 1/4" = 1'-0"



**3 36" R.A.S. PUMPS & PIPING HEADER ELEVATION**  
SCALE: 1/4" = 1'-0"



**2 30" PERMEATE PIPING ELEVATION**  
SCALE: 1/4" = 1'-0"



**4 16" BACKPULSE INFLUENT & HEADER ELEVATION**  
SCALE: 1/4" = 1'-0"



BID SET

**HAZARDOUS MATERIAL NOTE:**  
THE SERVICES PROVIDED BY MHE, INCLUDING ALL WORK DEPICTED ON MHE PLANS, DO NOT INCLUDE SERVICES RELATED TO THE IDENTIFICATION, CONTROLS OR HANDLING OF HAZARDOUS MATERIALS, INCLUDING SUCH MATERIALS AS ASBESTOS AND LEAD PAINT. ALL TESTING, IDENTIFICATION, ABATEMENT, CONTROLS, AND HANDLING OF HAZARDOUS MATERIALS SHALL BE UNDERTAKEN BY A HAZARDOUS MATERIAL CONSULTANT AND CERTIFIED PROFESSIONALS. IF SUCH MATERIALS HAVE BEEN IDENTIFIED, CONTRACTOR WILL COMMUNICATE DIRECTLY WITH HAZARDOUS MATERIAL PROFESSIONAL FOR THE PERFORMANCE OF ANY WORK ON OR ADJACENT TO SAID MATERIALS. IF UNIDENTIFIED MATERIALS OF CONCERN ARE ENCOUNTERED WHILE UNDERTAKING THE WORK SHOWN HEREON, CONTRACTOR SHALL IMMEDIATELY NOTIFY ENGINEER AND OWNER, AND SHALL OBTAIN DIRECTION FROM THE HAZARDOUS MATERIAL CONSULTANT PRIOR TO THE CONTINUATION OF WORK INVOLVING SUSPECTED MATERIAL.



UNAUTHORIZED ADDITION OR ALTERATION OF THIS PLAN IS A VIOLATION OF SECTION 7209(2) OF THE NEW YORK STATE EDUCATION LAW.

ALL PRODUCTION & INTELLECTUAL PROPERTY RIGHT RESERVED ©

**CAESARS LANE WWTP  
EXPANSION PROJECT:  
PHASE 2**  
145 CAESARS LN.  
NEW WINDSOR, NY 12553  
FOR TOWN OF NEW WINDSOR  
555 UNION AVE.  
NEW WINDSOR, NY 12553

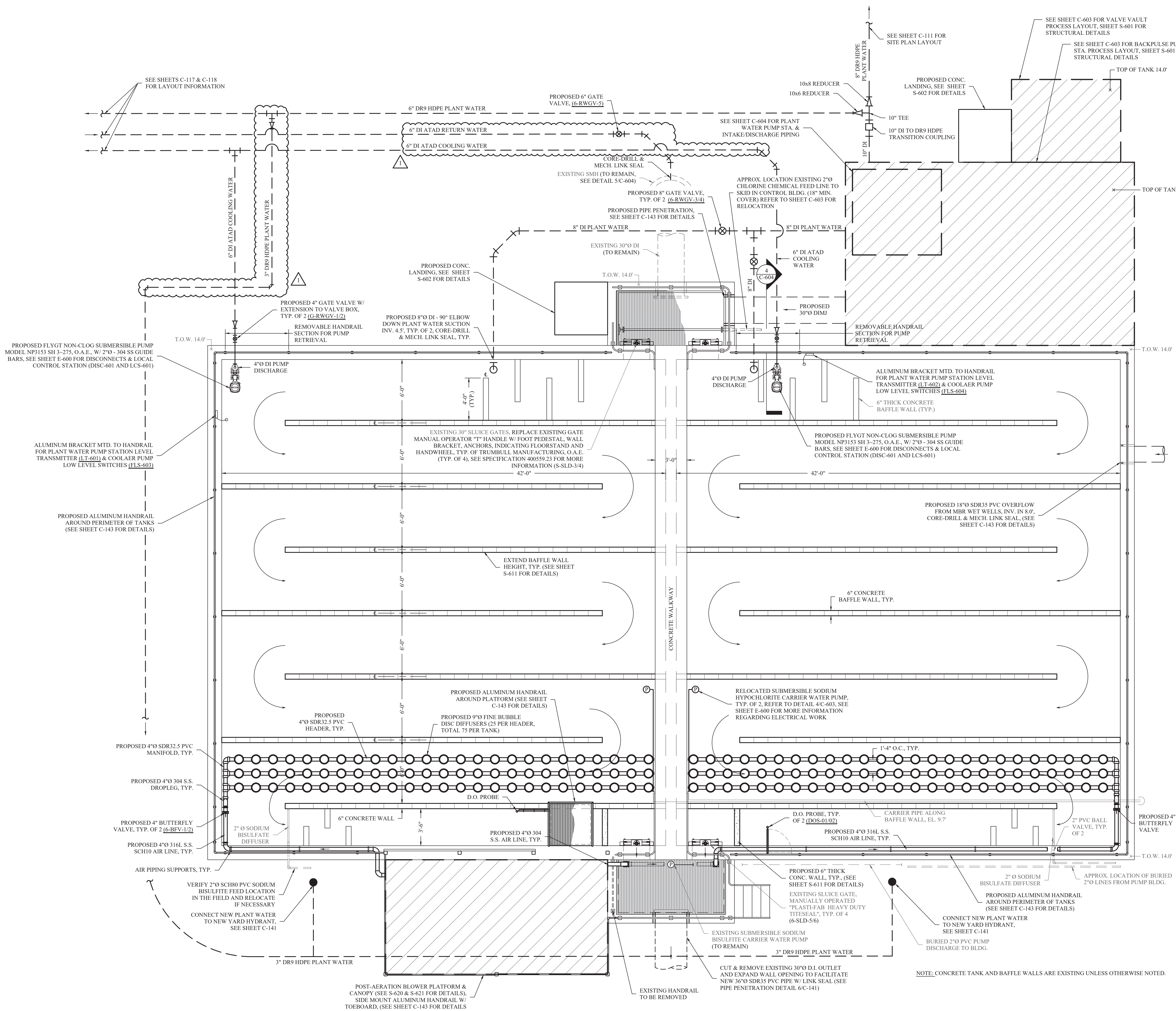
POST AERATION  
PROCESS PLAN

REVISIONS		
NO.	DESCRIPTION	DATE
1	ADDENDUM 2	06/20/25

ISSUED DATE:	18 APR. 2025
DESIGN BY:	JTW
DRAWN BY:	HPBH
CHECKED BY:	MWW
REVIEWED BY:	MJS, JZ
SHEET NO.	

C-602

PROJECT # 18-732 PHASE #



EXISTING DE-CHLORINATION  
MODIFICATIONS PLAN FOR POST AERATION  
C-602  
SCALE: 1/4" = 1'-0"



BID SET

**HAZARDOUS MATERIAL NOTE:**  
THE SERVICES PROVIDED BY MHE, INCLUDING ALL WORK DEPICTED ON MHE PLANS, DO NOT INCLUDE SERVICES RELATED TO THE IDENTIFICATION, CONTROLS OR HANDLING OF HAZARDOUS MATERIALS, INCLUDING SUCH MATERIALS AS ASBESTOS AND LEAD PAINT. ALL TESTING, IDENTIFICATION, ABATEMENT, CONTROLS, AND HANDLING OF HAZARDOUS MATERIALS SHALL BE UNDERTAKEN BY A HAZARDOUS MATERIAL CONSULTANT AND CERTIFIED PROFESSIONALS. IF SUCH MATERIALS HAVE BEEN IDENTIFIED, CONTRACTOR WILL COMMUNICATE DIRECTLY WITH HAZARDOUS MATERIAL PROFESSIONAL FOR THE PERFORMANCE OF ANY WORK ON OR ADJACENT TO SAID MATERIALS. IF UNIDENTIFIED MATERIALS OF CONCERN ARE ENCOUNTERED WHILE UNDERTAKING THE WORK SHOWN HEREON, CONTRACTOR SHALL IMMEDIATELY NOTIFY ENGINEER AND OWNER, AND SHALL OBTAIN DIRECTION FROM THE HAZARDOUS MATERIAL CONSULTANT PRIOR TO THE CONTINUATION OF WORK INVOLVING SUSPECTED MATERIAL.



UNAUTHORIZED ADDITION OR ALTERATION OF THIS PLAN IS A VIOLATION OF SECTION 7209(2) OF THE NEW YORK STATE EDUCATION LAW.

ALL PRODUCTION & INTELLECTUAL PROPERTY RIGHT RESERVED ©

**CAESARS LANE WWTP  
EXPANSION PROJECT:  
PHASE 2**  
145 CAESARS LN.  
NEW WINDSOR, NY 12553  
FOR TOWN OF NEW WINDSOR  
555 UNION AVE.  
NEW WINDSOR, NY 12553

TYPICAL EXISTING  
SECONDARY  
SETTLING TANK  
DEMOLITION PLAN

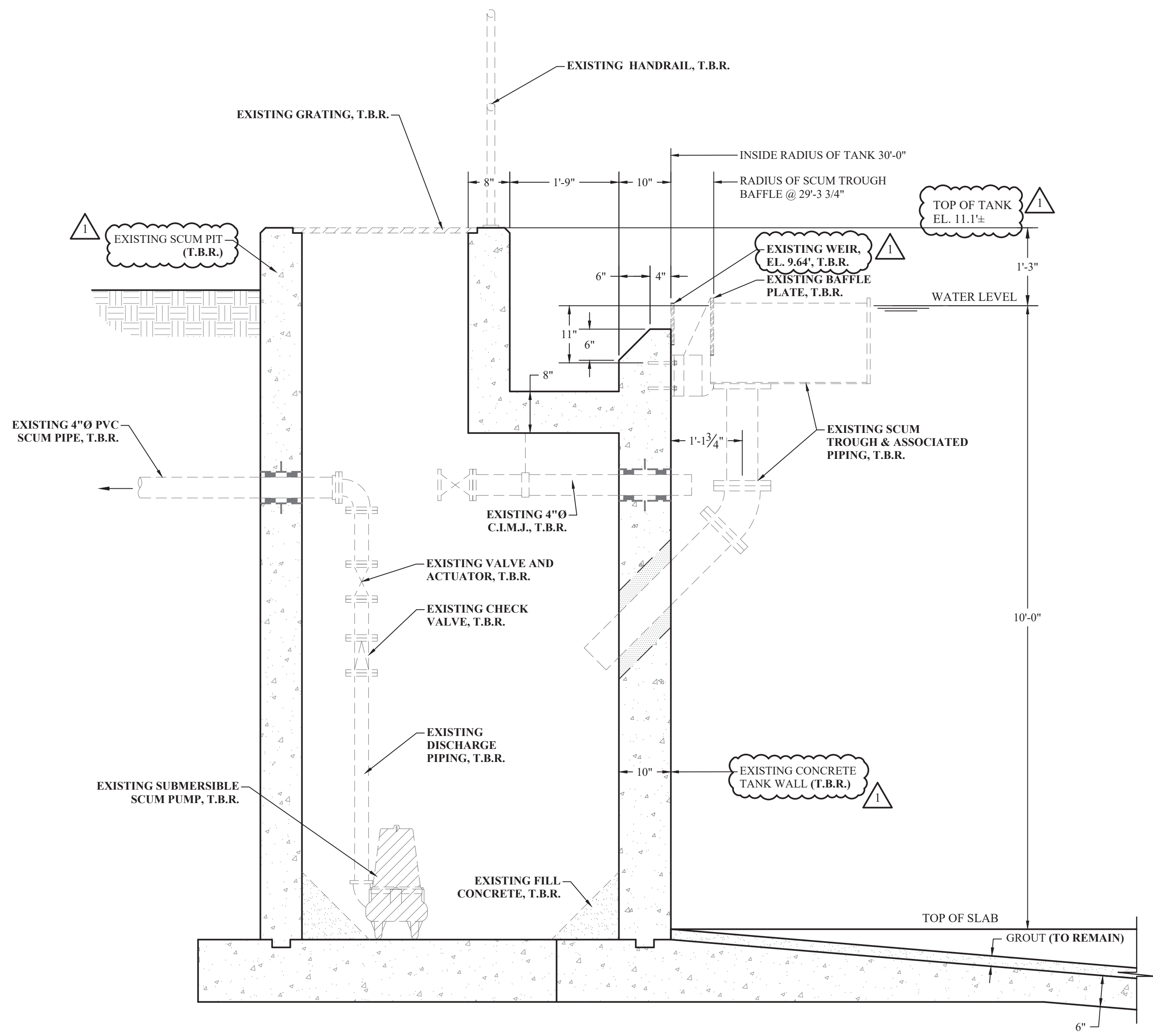
REVISIONS		
NO.	DESCRIPTION	DATE
1	ADDENDUM 2	06/20/25

ISSUED DATE: 18 APR. 2025  
DESIGN BY: JTW  
DRAWN BY: HPBjh  
CHECKED BY: MWV  
REVIEWED BY: MJS, JZ

SHEET NO.

CD-801

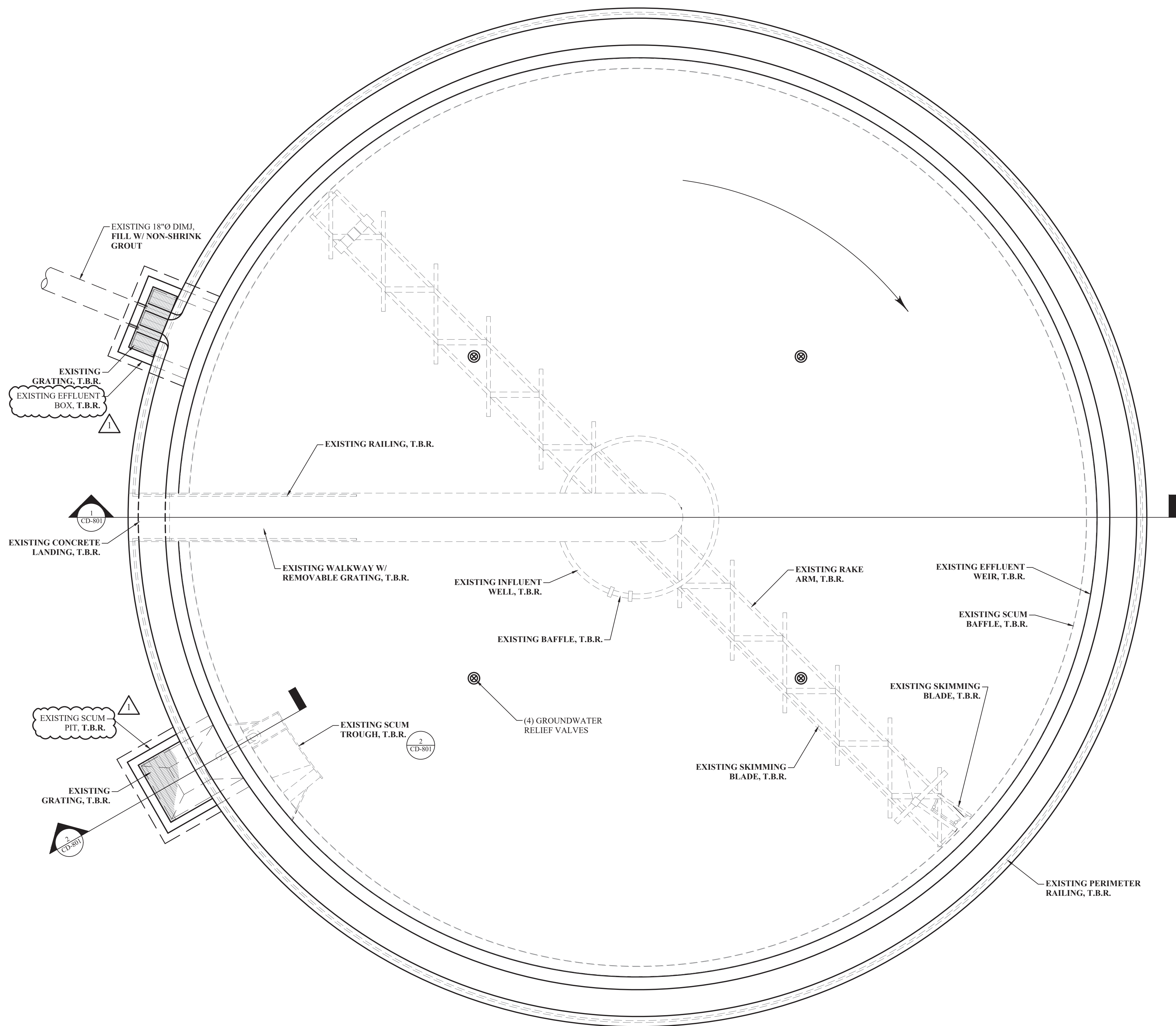
PROJECT # 18-732 PHASE #



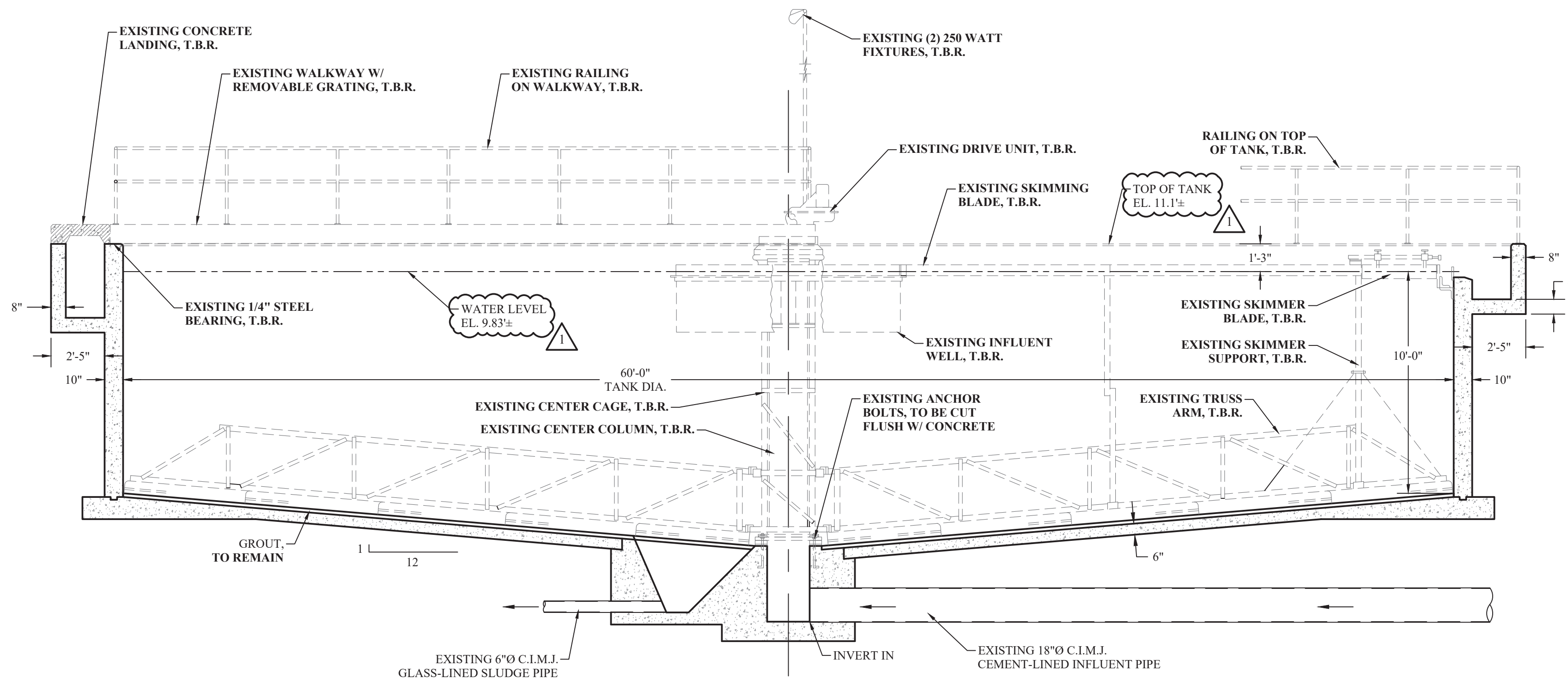
2 TYPICAL SECONDARY SETTLING TANK DEMOLITION SECTION THRU SCUM PIT & TROUGH  
SCALE: 3/4\"/>

NOTES:

1. ENTIRE STRUCTURE INCLUDING EQUIPMENT, PIPING, CONCRETE, ETC. TO BE REMOVED IN FULL TO TOP OF EXISTING SLAB (T.O.S.) AT APPROXIMATELY ELEVATION 0.0'.
2. DEMOLITION PLAN IS TYPICAL OF SECONDARY SETTLING TANKS 1 AND 2.
3. REFER TO SITE PLAN FOR ACTUAL PIPING, EFFLUENT TROUGH AND SCUM PIT ORIENTATION.
4. AFTER DEMOLITION IS COMPLETE, BACKFILL WITH ACCEPTED STRUCTURAL BACKFILL MATERIAL INSTALLED IN COMPACTED LIFTS IN ACCORDANCE WITH STRUCTURAL EXCAVATION, BACKFILL AND COMPACTION SPECIFICATION.
5. ALL ITEMS NOTED AS TO BE REMOVED, OR "T.B.R." SHALL BE COMPLETELY REMOVED BY THE CONTRACTOR AND PROPERLY DISPOSED OF. DISPOSAL MANIFESTS SHALL BE PROVIDED TO THE OWNER.
6. CONTENTS OF EXISTING SETTLING TANKS MAY BE DISPOSED OF BY PUMPING TO THE INFLUENT STRUCTURE ON THE GRAVITY THICKENERS AS COORDINATED WITH THE PLANT OPERATOR.
7. ALL POWER AND CONTROL WIRING AT THE SECONDARY SETTLING TANKS, INCLUDING CONDUIT SHALL BE REMOVED AND PROPERLY DISPOSED OF.
8. EXISTING BURIED PIPING NOT REMOVED SHALL BE FILLED WITH NON-SHRINK GROUT.



1 TYPICAL SECONDARY SETTLING TANK DEMOLITION PLAN  
SCALE: 1/4\"/>



3 TYPICAL SECONDARY SETTLING TANK DEMOLITION ELEVATION - SECTION  
SCALE: 1/4\"/>