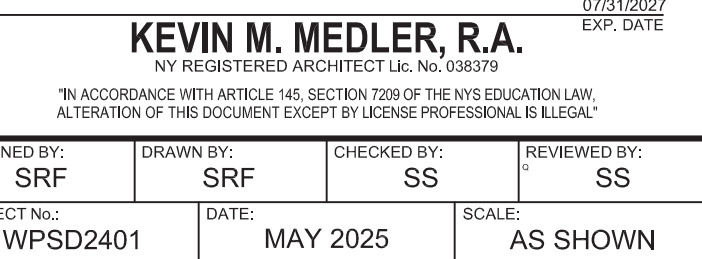


[illegible]

Renovations at Rochambeau Alternate High School



CONTRACT

CONTRACT E

ELECTRICAL CONSTRUCTION

SHEET TITLE

**BASEMENT
PROPOSED
FLOOR PLAN**

DRAWING No. **E 100.00**

1. SEE DRAWING E 001 FOR ELECTRICAL LEGEND, SYMBOLS, ABBREVIATIONS, & GENERAL NOTES.
2. EXISTING CONDITIONS ARE BASED ON A LIMITED FIELD SURVEY AND EXISTING DESIGN DRAWINGS. CONTRACTOR IS RESPONSIBLE FOR VERIFICATION OF EXISTING CONDITIONS FOR ALL CONFLICTS AND SHALL ALERT ENGINEER PRIOR TO COMMENCEMENT OF NEW WORK AND PURCHASE OF EQUIPMENT.
3. DO NOT SCALE DRAWINGS. LINE WORK SHOWN IS SCHEMATIC. CONTRACTOR SHALL PROVIDE SHOP DRAWINGS BASED ON DESIGN INTENT, SURVEY OF EXISTING CONDITIONS, AND COORDINATION WITH OTHER TRADES.
4. PROVIDE AND INSTALL A DEDICATED NEUTRAL FOR EACH CIRCUIT. CONTRACTOR IS NOT PERMITTED TO USE COMMON NEUTRALS.
5. COORDINATED THE LOCATIONS AND MOUNTING HEIGHTS OF ALL EQUIPMENT AND DEVICES WITH ARCHITECTURAL EQUIPMENT, REFLECTED CEILING PLANS, FURNITURE PLANS AND EQUIPMENT OF OTHER TRADES.



STATE OF NEW YORK
JOHN C. MORRIS III
LICENSED PROFESSIONAL ENGINEER
057554-1
07/15/2027

KEVIN M. MEDLER, P.E.
EXP. DATE 07/15/2027

CLIENT

White Plains City School District



SED #66-22-00-01-0-015-020

STATUS	FINAL BID DOCUMENT
--------	--------------------

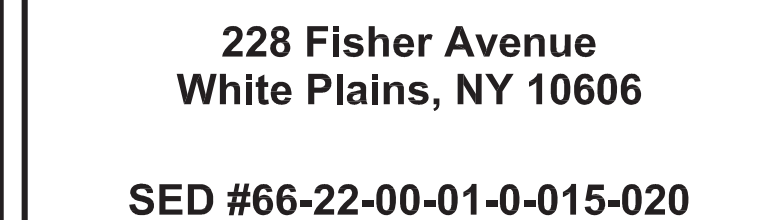
DRAWING No. **E 110.00**



MARK	DATE	DESCRIPTION
0	09-11-24	SED SUBMISSION
1	02-25-25	SED ADDENDUM 1
	05-28-25	FINAL BID SET
3	06-13-25	FINAL BID SET - ADDENDUM #3

DESIGNED BY: SRF	DRAWN BY: SRF	CHECKED BY: SS	REVIEWED BY: SS
PROJECT NO.: WPSD2401	DATE: MAY 2025	SCALE: AS SHOWN	

Renovations at Rochambeau Alternate High School



STATUS	FINAL BID DOCUMENT
--------	--------------------

DRAWING No. **E 500.00**



X:\WPSD\White Plains Central School District - 10901\WPSD 2401 - Rochambeau #418 Renovations\02-BM-CADD\Doc-Down\5 Electric\03.00 Schedule.dwg last modified Jan 11, 2025 - 2:50pm Plotter: ccs Jan 11, 2025 - 3:40pm by: rreynolds

SCHEDULE FOR DISTRIBUTION BOARD: HDP															
SYSTEM: 480Y/277V, 3Ø, 4W				NUMBER OF POLES: CONTINUOUS BUS				AREA SERVED: HVAC SYSTEMS							
BUS RATING: 800 A		MINIMUM CB IC: 65kA RMS SYM		EQUIP GROUND BUS: YES				PANEL LOCATION: STORAGE ROOM							
MAINS TYPE: MCB		MAINS RATING: 800 A		ISOLATED GND BUS: NO				MOUNTING: SURFACE		SUPPLIED FROM: UTILITY					
CIR. SERVES				LOAD		CIRCUIT BREAKER			MINIMUM FEEDER AND CONDUIT SIZE		COMMENTS				
				KVA	AMP	P	FRAME	TRIP							
#															
1	AC1			121	146	3	250	225							
2	AC2			65	78	3	225	150							
3	AC3 VIA TRANSFORMER T1			29	35	3	100	45							
4	FUTURE CUH-1			14	17	3	100	25							
5	FUTURE CUH-2			14	17	3	100	25							
6	FUTURE CUH-3			14	17	3	100	25							
7	SPARE					3	250	175							
8	SPARE					3	225	100							
9	SPACE					3									
10	SPACE					3									
11	SPACE					3									
12	SPD			1	1	3	100	30							
<div><div>TOTAL CONNECTED LOAD (KVA)</div><div>258</div></div> <div><div>TOTAL CONNECTED LOAD (AMPS)</div><div>310</div></div> <div>3</div>															
NOTES: 1.															

SCHEDULE FOR PANEL: AC1															
SYSTEM: 480Y/277V, 3Ø, 4W				NUMBER OF POLES: 42				AREA SERVED: HVAC SYSTEMS							
BUS RATING: 250 A		MINIMUM CB IC: 42kA RMS SYM		EQUIP GROUND BUS: YES				PANEL LOCATION: STORAGE ROOM							
MAINS TYPE: MCB		MAINS RATING: 225 A		ISOLATED GND BUS: NO				MOUNTING: SURFACE		SUPPLIED FROM: HDP					
CIR. SERVES		LOAD	MINIMUM BRANCH	BREAKER		PHASE			BREAKER		MINIMUM BRANCH	LOAD	SERVES	CIR.	
#			CIRCUIT & CONDUIT SIZE	P	TRIP	A	B	C	TRIP	P	CIRCUIT & CONDUIT SIZE			#	
1		5707				9115						3408		2	
3	CU-5	5707	3#10, #10 G, 3/4" C	3	25		9115		20	3	3#12, #12 G, 3/4" C	3408	CU-7	4	
5		5707						9115				3408		6	
7		5707				11414						5707		8	
9	CU-5	5707	3#10, #10 G, 3/4" C	3	25		11414		25	3	3#10, #10 G, 3/4" C	5707	CU-3	10	
11		5707						11414				5707		12	
13		5707				11414						5707		14	
15	CU-1	7175	3#8, #10 G, 3/4" C	3	35		12882		25	3	3#10, #10 G, 3/4" C	5707	CU-3	16	
17		7175						12882				5707		18	
19		7175				7175			-	1			SPACE	20	
21	CU-1	7175	3#8, #10 G, 3/4" C	3	35		7175		-	1			SPACE	22	
23		7175						7175	-	1			SPACE	24	
25						0			-	1			SPACE	26	
27	SPARE			3	25		0		-	1			SPACE	28	
29								0	-	1			SPACE	30	
31						0			-	1			SPACE	32	
33	SPARE			3	35		0		-	1			SPACE	34	
35								0	-	1			SPACE	36	
37	SPARE			1	20	0			-	1			SPACE	38	
39	SPARE			1	20		0		-	1			SPACE	40	
41	SPARE			1	20			0	-	1			SPACE	42	
TOTAL CONNECTED LOAD (VA)						39118	40586	40586	VA PER PHASE						
						141	147	147	AMPS PER PHASE						
									145			TOTAL CONNECTED LOAD (AMPS)			
NOTES:															
1.															

SCHEDULE FOR PANEL: AC2																		
SYSTEM: 480Y/277V, 3Ø, 4W							NUMBER OF POLES: 30						AREA SERVED: HVAC SYSTEMS					
BUS RATING: 250 A			MINIMUM CB IC: 42kA RMS SYM				EQUIP GROUND BUS: YES						PANEL LOCATION: STORAGE ROOM					
MAINS TYPE: MCB			MAINS RATING: 150 A				ISOLATED GND BUS: NO						MOUNTING: SURFACE		SUPPLIED FROM: HDP			
CIR. SERVES		LOAD	MINIMUM BRANCH		BREAKER		PHASE			BREAKER		MINIMUM BRANCH		LOAD	SERVES		CIR.	
#			CIRCUIT & CONDUIT SIZE		P	TRIP	A	B	C	TRIP	P	CIRCUIT & CONDUIT SIZE			#		#	
1		7175					14350							7175			2	
3	CU-2	7175	3#8, #10 G, 3/4" C		3	35		14350			35	3	3#8, #10 G, 3/4" C	7175	CU-6		4	
5		7175								14350				7175			6	
7		7175					7175				-	1			SPACE		8	
9	CU-4	7175	3#8, #10 G, 3/4" C		3	35		7175			-	1			SPACE		10	
11		7175								7175	-	1			SPACE		12	
13							0				-	1			SPACE		14	
15	SPARE				3	35		0			-	1			SPACE		16	
17										0	-	1			SPACE		18	
19	SPARE				1	20	0				-	1			SPACE		20	
21	SPACE				1	-		0			-	1			SPACE		22	
23	SPACE				1	-				0	-	1			SPACE		24	
25	SPACE				1	-	0				-	1			SPACE		26	
27	SPACE				1	-		0			-	1			SPACE		28	
29	SPACE				1	-				0	-	1			SPACE		30	
TOTAL CONNECTED LOAD (VA)							21525	21525	21525	VA PER PHASE								
							78	78	78	AMPS PER PHASE								
															78	TOTAL CONNECTED LOAD (AMPS)		
NOTES:																		
1.																		
2.																		

SCHEDULE FOR PANEL: AC3															
SYSTEM: 208Y/120V, 3Ø, 4W				NUMBER OF POLES: 30				AREA SERVED: HVAC SYSTEMS							
BUS RATING: 100 A		MINIMUM CB IC: 22kA RMS SYM		EQUIP GROUND BUS: YES				PANEL LOCATION: STORAGE ROOM							
MAINS TYPE: MCB		MAINS RATING: 100 A		ISOLATED GND BUS: NO				MOUNTING: SURFACE		SUPPLIED FROM: HDP VIA T1					
CIR.	SERVES	LOAD	MINIMUM BRANCH CIRCUIT & CONDUIT SIZE	BREAKER	PHASE			BREAKER	MINIMUM BRANCH CIRCUIT & CONDUIT SIZE	LOAD	SERVES	CIR.			
#				P	TRIP	A	B	C	TRIP	P		#			
1	CU-8	3026	2#8, #10 G, 3/4" C	2	35	3206			20	1	2#12, #12 G, 3/4" C	180	RECEPTACLE - ROOF	2	
3		3026					3206		20	1	2#12, #12 G, 3/4" C	180	RECEPTACLE - ROOF	4	
5	CU-9	3026	2#8, #10 G, 3/4" C	2	35			3566	20	1	2#12, #12 G, 3/4" C	540	RECEPTACLES - ROOF	6	
7		3026				4106			20	1	2#12, #12 G, 3/4" C	1080	CP-1 THRU 6	8	
9	CU-10	3026	2#8, #10 G, 3/4" C	2	35		4106		20	1	2#12, #12 G, 3/4" C	1080	CP-7 THRU 11 AND CP-31	10	
11		3026						4646	20	1	2#12, #12 G, 3/4" C	1620	CP-12 THRU CP-20	12	
13	EU-1	63	2#12, #12 G, 3/4" C	2	15	1143			20	1	2#12, #12 G, 3/4" C	1080	CP-21 THRU 26	14	
15		63					963		20	1	2#12, #12 G, 3/4" C	900	CP-27 THRU 30 AND CP-32	16	
17	EU-2	42	2#12, #12 G, 3/4" C	2	15			1218	20	1	2#12, #12 G, 3/4" C	1176	KE-1	18	
19		42				1767			15	1	2#12, #12 G, 3/4" C	1725	ERV-1	20	
21	EU-3	63	2#12, #12 G, 3/4" C	2	15		63		20	1			SPARE	22	
23		63						63	-	1			SPACE	24	
25	SPARE			1	20	0			-	1			SPACE	26	
27	SPARE			1	20		0		-	1			SPACE	28	
29	SPACE			1	-			0	-	1			SPACE	30	
TOTAL CONNECTED LOAD (VA)						28053	10222	8338	9493	VA PER PHASE		TOTAL CONNECTED LOAD (AMPS)			
						85	69	79	AMPS PER PHASE		78				
NOTES:															
1.															