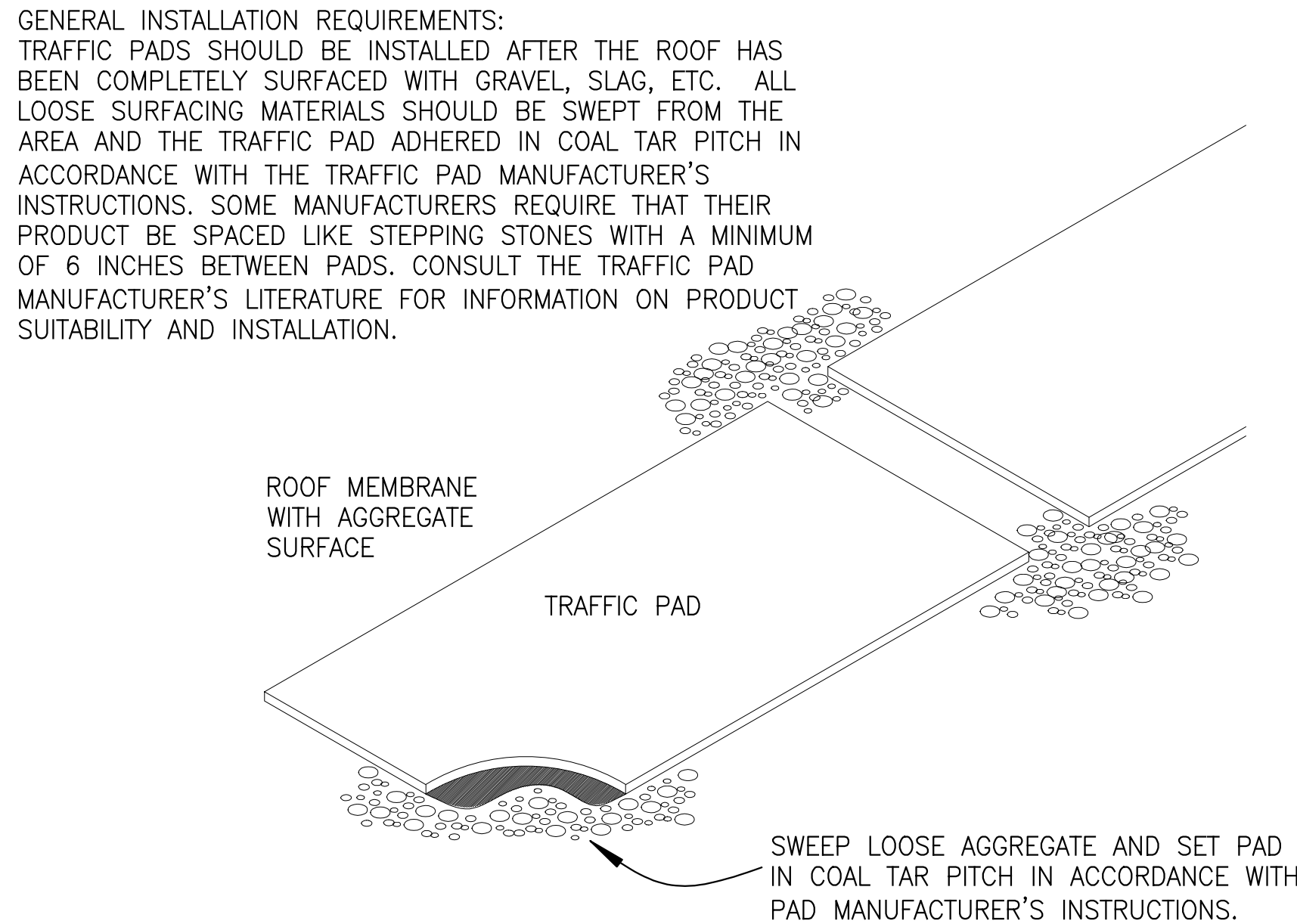


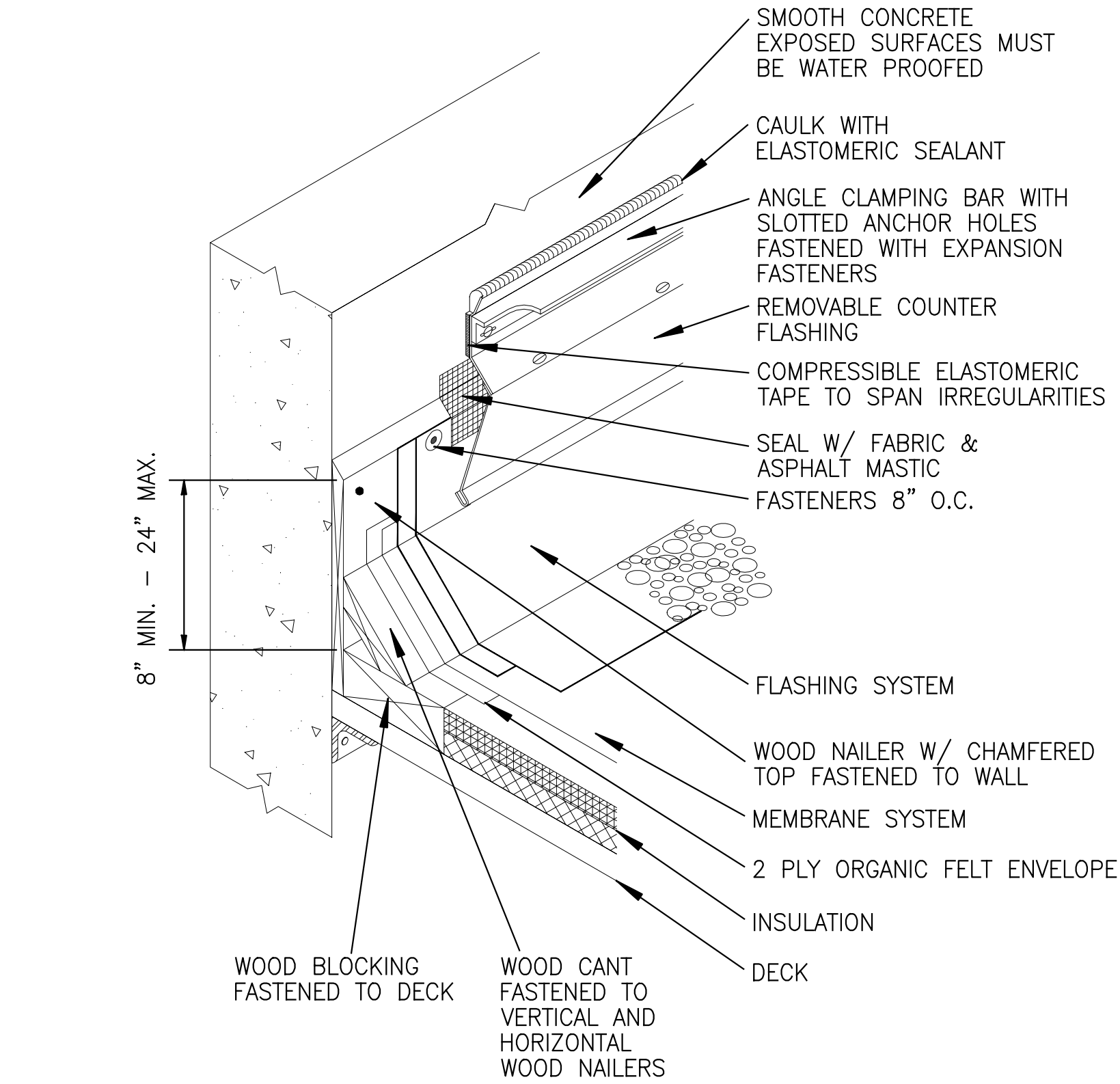
PITCH DAM NOTE:  
INSTALL A 3'X3' SHEET OF ORGANIC BASE OR TWO PLIES OF 15LB FELT, CENTERED OVER THE DRAIN BOWL AND SET IN STEEP ASPHALT OR ASPHALT MASTIC. AFTER THE COAL TAR MEMBRANE PLIES ARE IN PLACE, CUT THROUGH THE MEMBRANE AND PITCH DAM FELT APPROXIMATELY 2 INCHES BACK FROM AROUND THE DRAIN BOWL FLANGE AND REMOVE THE FELT COVERING THE DRAIN BOWL. COVER THE DRAIN BOWL FLANGE, THE EXPOSED INSULATION AND 4 INCHES ONTO THE MEMBRANE WITH TWO PLIES OF FABRIC SET INTO ALTERNATE COATS OF ASPHALT MASTIC.

30" X 30" (21/2 - 4 LB) LEAD SHEET SET IN A FULL BED OF ASPHALT MASTIC. PRIME TOP SURFACE OF LEAD WITH APPROPRIATE PRIMER AND ALLOW TO DRY PRIOR TO INSTALLING STRIPPING. STRIPPING SHOULD CONSIST OF TWO PLIES. THE TOP TARGET PLY SHOULD EXTEND UNDER CLAMPING RING ALONG WITH THE LEAD TO THE INSIDE EDGE OF THE DRAIN BOWL.

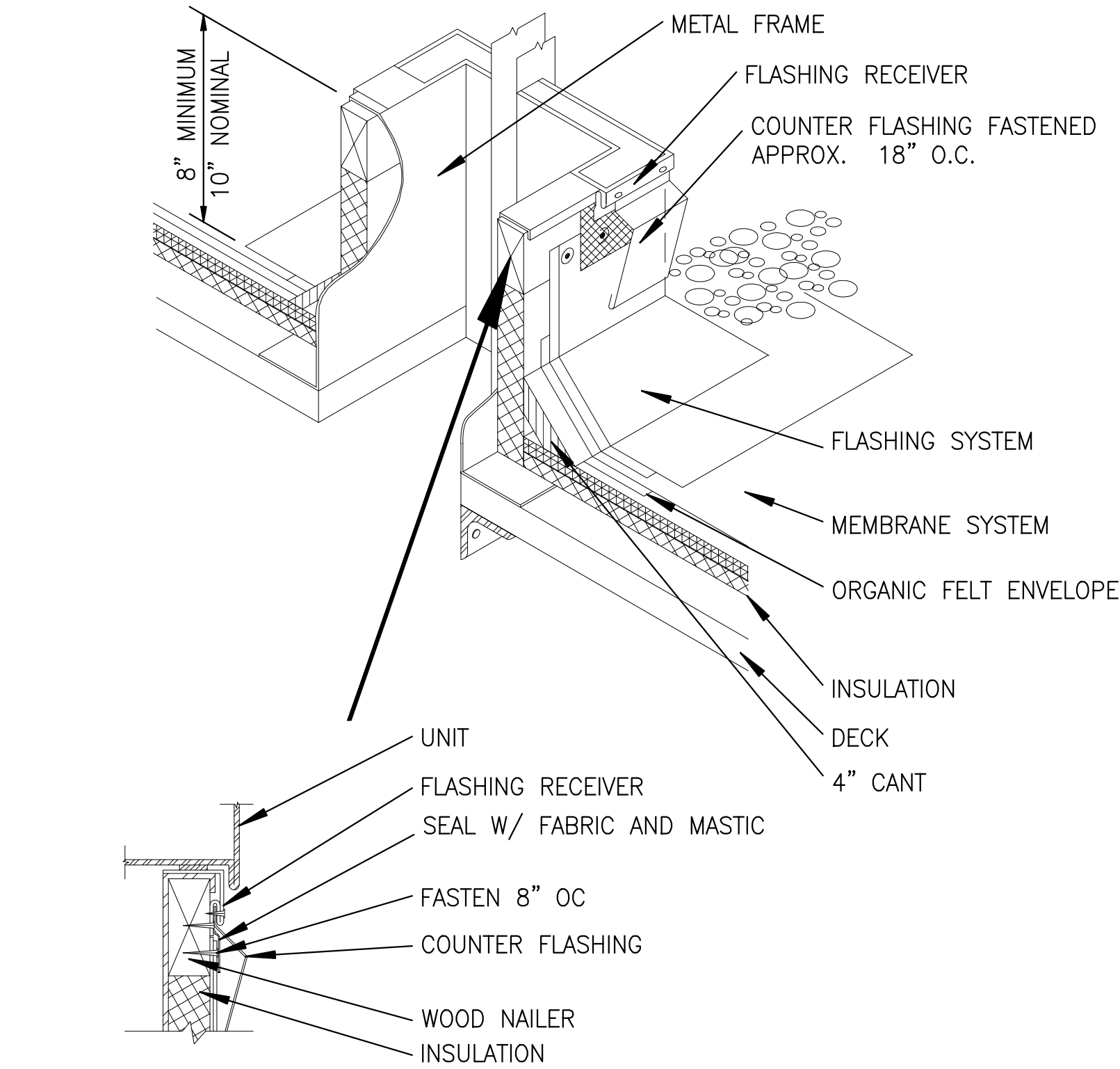
1 ROOF DRAIN WITH TAPER  
A-313 A-313 N.T.S.



4 TRAFFIC PAD  
A-313 A-313 N.T.S.



2 CONCRETE PARAPET  
A-313 A-313 N.T.S.



3 HVAC CURB  
A-313 A-313 N.T.S.

ARCHITECT  
**di Domenico + Partners LLP**  
Architecture  
Landscape Architecture  
Planning  
3743 Crescent Street, 3rd Floor  
Long Island City, New York 11101  
Tel 212-337-0400  
Fax 212-337-3567

CIVIL PLANNING ENGINEER  
**JMC**  
JMC Planning Engineering Landscape  
Architecture & Land Surveying, PLLC  
120 Bedford Road  
Armonk, New York 10504  
Tel 914-273-5225  
Fax 914-273-2102

MEP ENGINEER  
**Burns**  
BURNS ENGINEERING, PC.  
1261 Broadway, Suite 708  
New York, New York 10001  
Tel 212-962-3503

STRUCTURAL ENGINEER  
**GEI**  
GEI50  
1385 Broadway, 20th FL  
New York, New York 10018  
Tel 212-687-8282



MANHATTAN BEER DISTRIBUTORS  
20 DUNNIGAN DRIVE  
SUFFERN, NEW YORK

REV	DESCRIPTION	DATE
-	ISSUED FOR DOB SUBMISSION	9.10.21
-	ISSUED FOR BID	10.15.21
-	ISSUED FOR CONSTRUCTION	11.30.21
-	ISSUED FOR PROGRESS	01.18.22

DRAWN BY :	S. WOO
CHECKED BY :	D. TOBAR, R.A.
APPROVED BY :	A. BERGER, R.A.
DATE :	07.30.2021
SCALE :	AS NOTED

DRAWING TITLE :  
**TYPICAL COAL TAR  
MEMBRANE SYSTEM**

DWG NUMBER :

**A-313**