

PLANTING SCHEDULE								
TYPE	#	QTY	BOTANICAL NAME	COMMON NAME	CAL.	HEIGHT	ROOT	NOTES/COMMENTS
SHRUB	1	128	THUJA GREEN GIANT	THUJA STANDISHII X PLICATA	—	6'-0"	B&B	PLANT AT 6'-6" STAGGERED
	2	79	JAPANESE CEDAR	CRYPTOMERIA JAPONICA	—	6'-0"	B&B	PLANT AT 6'-6" STAGGERED
	3	0	ARBORVITAE HEDGE	THUJA OCCIDENTALIS SMARAGO	—	6'-0"	B&B	PLANT AT 6'-6" STAGGERED
VINES	01	320 SF	WHITE CLIMBING HYDRANGEA	HYDRANGEA ANOMALA PETIOLARIS	—	—	1 QT	PLANT AT 12" O.C.
	02	640 SF	ENGLISH IVY	HEDRA HELIX	—	—	PLATS	PLANT AT 8" O.C.
PERENNIALS	1	90	ORNAMENTAL FOUNTAIN GRASS	PENNISETUM ALOPECUROIDES 'MOUDRY'	—	—	3 GAL.	PLANT AT 30" STAGGERED
	2	48	SPRING/SUMMER/FALL PERENNIAL FLOWER MIX	VARIES	—	—	1 GAL.	PLANT AT 18" STAGGERED

LEGEND:

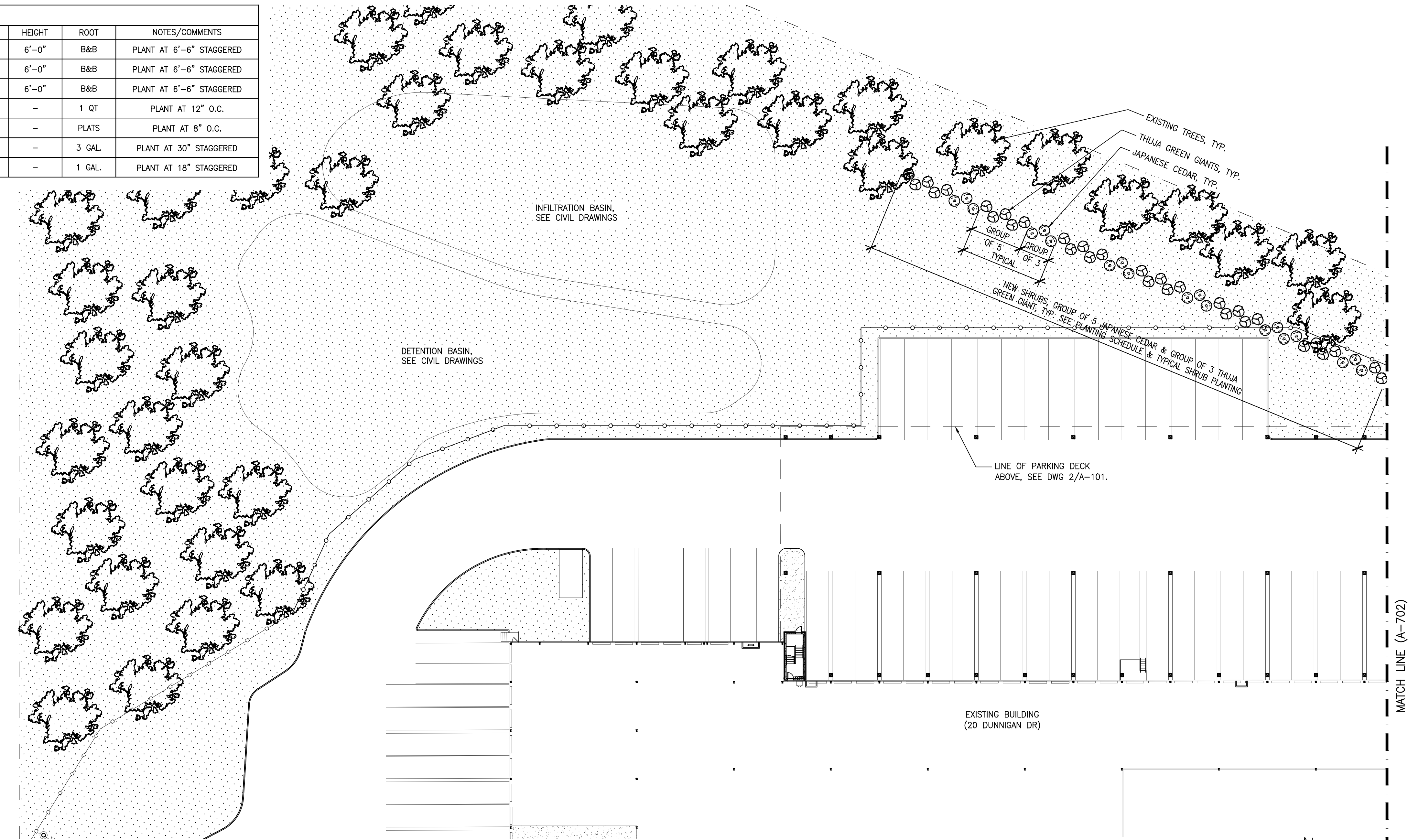
- NEW CHAIN LINK FENCE
- EXISTING CHAIN LINK FENCE
- PROPOSED SHRUB
- EXISTING SHRUB
- EXISTING TREE
- EXISTING TREE TO BE REMOVED

GENERAL NOTES:

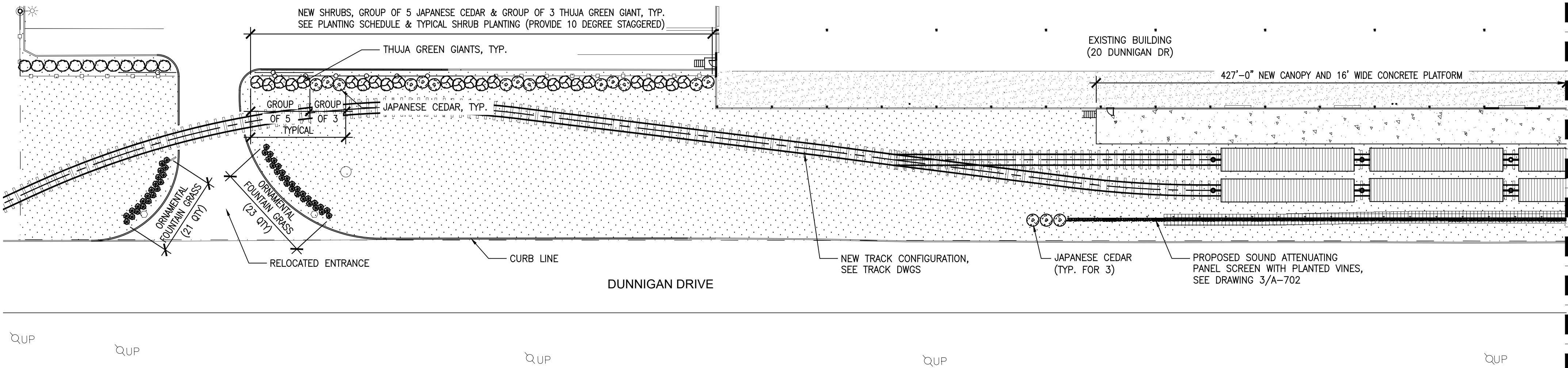
- SEE CIVIL DRAWINGS FOR GRADING AND UTILITIES PLANS.
- SEE PLANTING AND STANDARD LANDSCAPING NOTES IN A-700.

STANDARD LANDSCAPING NOTES:

- ALL PLANTS SHALL BEAR THE SAME RELATIONSHIP TO FINISHED GRADE AS THAT WHICH EXISTED IN THE NURSERY.
- ALL PLANTS SHALL BE ORIENTED AT THEIR PROPOSED LOCATION TO PRESENT THEIR BEST SIDE. THIS INSTALLATION SHALL BE CARRIED OUT UNDER THE SUPERVISION OF THE LANDSCAPE ARCHITECT.
- MULCH ALL PLANT BEDS AND TREES WITH A THREE-INCH MINIMUM DEPTH OF WOODCHIPS, PINE BARK, PEAT MOSS, OR OTHER MULCH ACCEPTABLE TO THE VILLAGE'S LANDSCAPE CONSULTANT.
- STAKE ALL TREES WITH TWO THREE-INCH-DIAMETER CEDAR STAKES 180° APART, REINFORCED RUBBER HOSE AROUND TREE (SIX FEET ZERO INCHES PLUS/MINUS ABOVE GRADE) AND TWISTED #10 GAUGE GALVANIZED WIRE WITH TURNBUCKLES. TREES LARGER THAN THREE-AND-ONE-HALF-INCH CALIPER SHALL BE STAKED WITH THREE STAKES EACH AT 120° APART.
- PLANT PITS SHALL BE 18 INCHES WIDER AND SIX INCHES DEEPER THAN THE ROOT BALL AT A MINIMUM. REMOVE ALL EXISTING SOIL, LOOSEN SIDES OF PIT WITH PICK, AND BACKFILL WITH A MIXTURE OF ONE PART PEAT-HUMUS TO FOUR PARTS TOPSOIL. ADD APPROPRIATE QUANTITIES OF COMPLETE COMMERCIAL FERTILIZER (NITROGEN, PHOSPHORIC ACID, AND POTASH) AND BONEMEAL.
- TREE TRUNKS SHALL BE WRAPPED WITH BURLAP, OR OTHER APPROVED WRAP, UP TO THE BOTTOM BRANCHES WITH 50% OVERLAP.
- ALL PLANTS AND WORKMANSHIP SHALL BE UNCONDITIONALLY GUARANTEED FOR TWO FULL PLANTING SEASONS, OR ONE CALENDAR YEAR, WHICHEVER IS LONGER.
- ALL PLANTS SHALL BE PRUNED BACK 1/4 TO 1/3 BRANCH LENGTHS IMMEDIATELY AFTER PLANTING, EXCEPT THAT MAIN LEADERS SHALL NOT BE CUT.
- ALL PLANTING SHALL BE INSTALLED UNDER THE DIRECTION OF A LICENSED PROFESSIONAL LANDSCAPE ARCHITECT. THE VILLAGE'S LANDSCAPE CONSULTANT SHALL BE NOTIFIED 48 HOURS PRIOR TO PLANTING.
- PROVIDE THE VILLAGE BUILDING INSPECTOR AND VILLAGE LANDSCAPE CONSULTANT WITH A COPY OF THE STATE CERTIFICATE OF SOURCE FOR ALL PLANT MATERIAL.
- ALL PLANT MATERIAL SHALL BE NURSERY GROWN AND SHALL CONFORM TO THE STANDARDS OF AMERICAN STANDARD FOR NURSERY STOCK, THE AMERICAN ASSOCIATION OF NURSERYMEN, LATEST EDITION.
- NO PLANTS EXISTING ON THE SITE SHALL BE REMOVED, EXCEPT FOR THOSE SPECIFICALLY IDENTIFIED ON THE DRAWINGS FOR REMOVAL. TREES AND VEGETATED AREAS TO REMAIN SHALL BE PROTECTED WITH BRIGHTLY COLORED TEMPORARY FENCING LOCATED BEYOND THE DRIPLINES.
- A LICENSED PROFESSIONAL LANDSCAPE ARCHITECT SHALL CERTIFY THAT THE PLANTINGS WERE COMPLETED IN ACCORDANCE WITH THE APPROVED PLAN, AND SUCH CERTIFICATION SHALL BE PROVIDED TO THE VILLAGE'S LANDSCAPE CONSULTANT PRIOR TO THE ISSUANCE OF A CERTIFICATE OF OCCUPANCY.
- ALL LANDSCAPE INSTALLATIONS SHALL BE MAINTAINED ON A REGULAR BASIS, AND SHALL NOT BE ALLOWED TO TAKE ON AN UNSIGHTLY APPEARANCE (EXCEPT FOR NATURAL AREAS WHICH SHALL BE ALLOWED TO GROW NATURALLY WITH A MINIMUM OF MAINTENANCE)



1 PARTIAL PLAN REAR YARD WEST  
SCALE: 1/32"=1'-0"



2 PARTIAL PLAN FRONT YARD WEST  
SCALE: 1/32"=1'-0"

ARCHITECT  
**di Domenico + Partners LLP**  
Architecture  
Landscape Architecture  
Planning  
3743 Crescent Street, 3rd Floor  
Long Island City, New York 11101  
Tel 212-337-0400  
Fax 212-337-3567

CIVIL PLANNING ENGINEER  
**JMC**  
JMC Planning Engineering Landscape  
Architecture & Land Surveying, PLLC  
120 Bedford Road  
Armonk, New York 10504  
Tel 914-273-5225  
Fax 914-273-2102

MEP ENGINEER  
**Burns** BURNS ENGINEERING, PC.  
1261 Broadway, Suite 708  
New York, New York 10001  
Tel 212-962-3503

STRUCTURAL ENGINEER  
**GEI** GEI50  
1385 Broadway, 20th FL  
New York, New York 10018  
Tel 212-687-8282



MANHATTAN BEER DISTRIBUTORS  
20 DUNNIGAN DRIVE  
SUFFERN, NEW YORK

REV	DESCRIPTION	DATE
—	ISSUED FOR DOB SUBMISSION	9.10.21
—	ISSUED FOR BID	10.15.21
—	ISSUED FOR CONSTRUCTION	11.30.21
—	REVISED BID SET	01.20.22
—	REVISED FOR CONSTRUCTION	04.05.22
—	PER METAL PANEL REDESIGN	07.26.22
—	REVISED FOR CONSTRUCTION	08.15.22

DRAWN BY :	S. WOO
CHECKED BY :	D. TOBAR, R.A.
APPROVED BY :	A. BERGER, R.A.
DATE :	07.30.2021
SCALE :	AS NOTED

DRAWING TITLE:  
**PROPOSED LANDSCAPE  
PARTIAL PLAN AND  
SCHEDULE (1 OF 2)**

DWG NUMBER :

**A-701**