

REV	DESCRIPTION	DATE
1	REISSUED PER PB COMMENTS	07.16.20
2	REISSUED PER PB COMMENTS	08.21.20
3	REISSUED PER PB COMMENTS	09.17.20
4	REISSUED PER PB COMMENTS	10.20.20
5	FOR PLANNING BOARD APPROVAL	04.09.21
6	REISSUED PER ENGINEER COMMENTS	05.10.21
7	ISSUED FOR DOB SUBMISSION	09.10.21
8	ISSUED FOR BID	10.15.21
9	REVISED BID/PERMIT SET	02.25.22
10	REVISED/ISSUED FOR CONSTRUCTION	10.19.22

DRAWN BY : DC

CHECKED BY : JPM/JAR

APPROVED BY : DL

DATE : 1.16.2020

SCALE : 1" = 40'

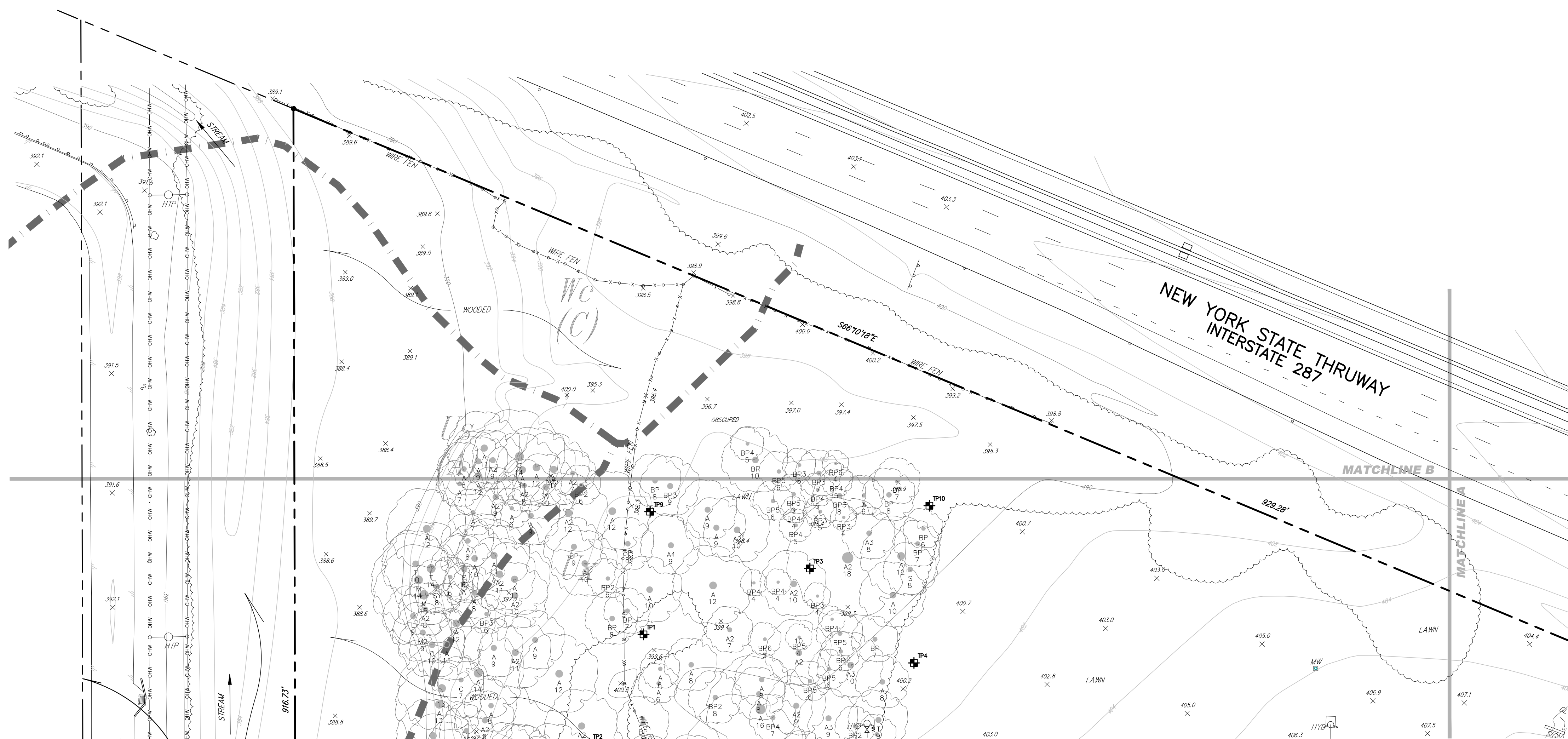
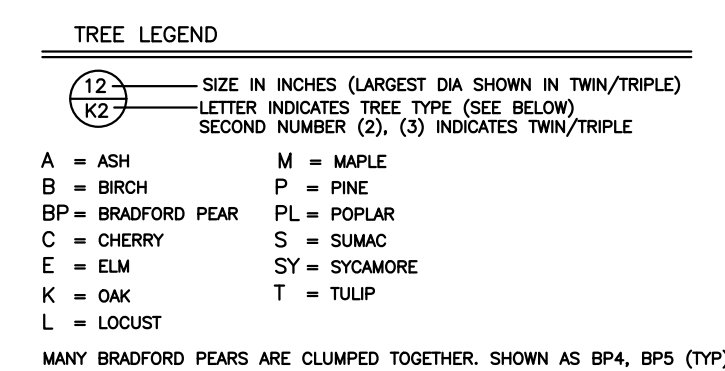
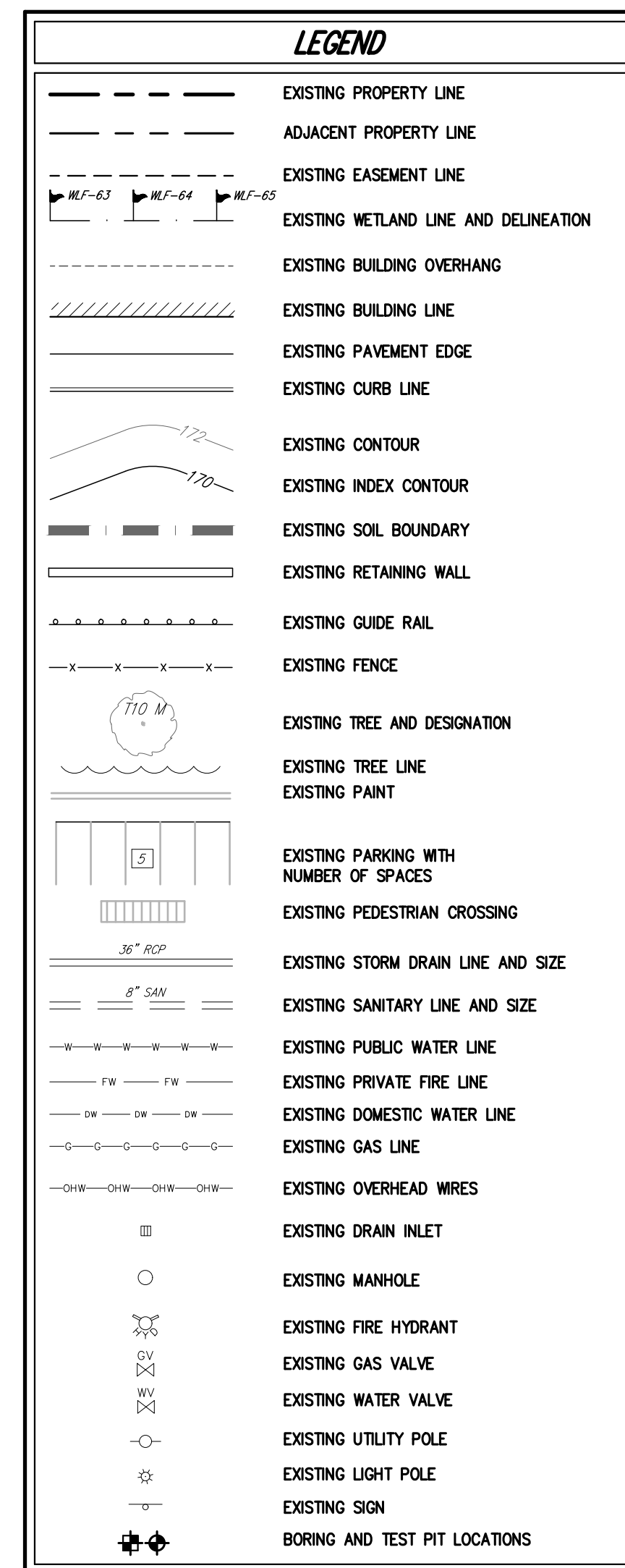
ISSUE :

DRAWING TITLE :
**EXISTING CONDITIONS
MAP**

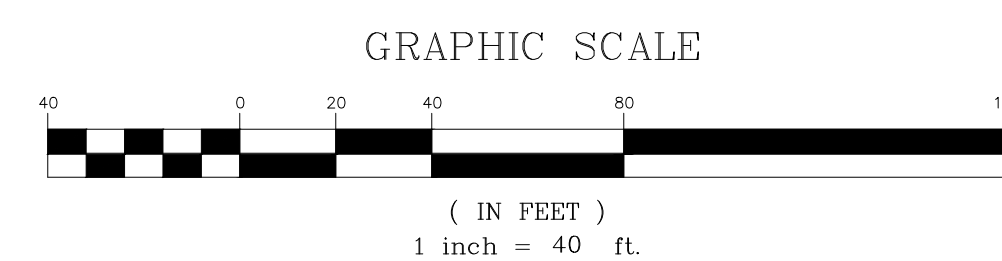
DWG NUMBER :

C-013

JMC PROJECT: 19005-
SCR: EXISTING.SCR
DWG FILE: 19005-BASE



REFER TO DRAWINGS C-001 THROUGH C-006 FOR ALL
CIVIL ENGINEERING/SITE DEVELOPMENT NOTES AND
SPECIFICATIONS PERTAINING TO THIS PROJECT.



ANY ALTERATION OF PLANS, SPECIFICATIONS, PLATS AND REPORTS BEARING THE SEAL OF A LICENSED PROFESSIONAL ENGINEER OR LICENSED LAND SURVEYOR IS A VIOLATION OF SECTION 7209 OF THE NEW YORK STATE EDUCATION LAW, EXCEPT AS PROVIDED FOR BY SECTION 7209, SUBSECTION 2.