

GENERAL MECHANICAL NOTES:

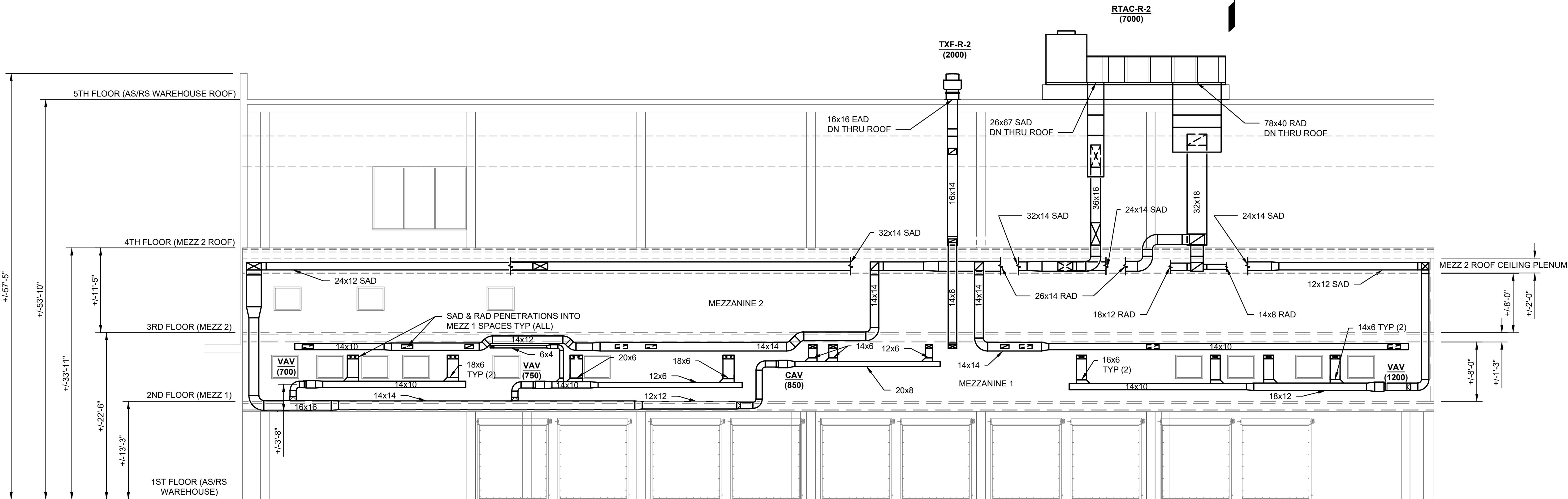
- ALL WORK SHALL CONFORM TO THE LATEST BUILDING STANDARDS. IT IS THE RESPONSIBILITY OF THE CONTRACTOR TO OBTAIN A COPY OF THE BUILDING STANDARDS AND MEET WITH BUILDING MANAGEMENT IN ORDER TO BECOME TOTALLY FAMILIAR WITH THE BUILDING CONSTRUCTION RULES. THERE SHALL BE NO DEVIATION FROM THE BUILDING STANDARDS WITHOUT PRIOR WRITTEN APPROVAL FROM THE BUILDING MANAGEMENT.
- WHEN MECHANICAL WORK IS SUBCONTRACTED IT SHALL BE THE MECHANICAL CONTRACTORS RESPONSIBILITY TO COORDINATE SUBCONTRACTORS AND THE ASSOCIATED CONTRACTS. WHEN DISCREPANCIES ARISE PERTAINING TO WHICH CONTRACTOR PROVIDES A PARTICULAR ITEM OF THE MECHANICAL CONTRACT OR WHICH CONTRACTOR PROVIDES FINAL CONNECTIONS FOR A PARTICULAR ITEM OF THE MECHANICAL CONTRACT, IT SHALL BE BROUGHT TO THE ATTENTION OF THE MECHANICAL CONTRACTOR, WHOSE DECISION SHALL BE FINAL.
- ALL MISCELLANEOUS STEEL REQUIRED TO ENSURE PROPER INSTALLATION AND AS SHOWN IN DETAILS FOR PIPING, DUCTWORK, AND EQUIPMENT SHALL BE FURNISHED AND INSTALLED BY THE MECHANICAL CONTRACTOR AND COORDINATED WITH THE GENERAL CONTRACTOR FOR COORDINATION AMONG ALL TRADES.
- FURNISH & INSTALL ALL MATERIALS, EQUIPMENT AND PERFORM ALL LABOR REQUIRED TO INSTALL COMPLETE MECHANICAL SYSTEMS AS INDICATED ON THE DRAWINGS, AS SPECIFIED AND AS REQUIRED BY CODE.
- INSTALL ALL MECHANICAL EQUIPMENT AND APPURTENANCES IN ACCORDANCE WITH MANUFACTURERS' RECOMMENDATIONS, CONTRACT DOCUMENTS, AND APPLICABLE CODES AND REGULATIONS.
- FURNISH & INSTALL VIBRATION ISOLATORS FOR ALL PIPING SUPPORTS CONNECTED TO AND WITHIN 50 FEET OR 50 PIPE DIAMETERS IF ISOLATED EQUIPMENT REFER TO SPECIFICATIONS FOR EXACT REQUIREMENTS OF ALL PIPING, DUCTWORK AND EQUIPMENT VIBRATION ISOLATION.
- LOCATE ALL TEMPERATURE, PRESSURE AND FLOW MEASURING DEVICES IN ACCESSIBLE LOCATIONS WITH STRAIGHT SECTION OF PIPE OR DUCT UP- AND DOWNSTREAM AS RECOMMENDED BY THE MANUFACTURER.
- COORDINATE ALL EQUIPMENT CONNECTIONS WITH MANUFACTURER'S CERTIFIED DRAWINGS. COORDINATE AND PROVIDE ALL DUCT AND PIPING TRANSITIONS REQUIRED FOR THE FINAL EQUIPMENT CONNECTIONS TO FURNISHED EQUIPMENT. FIELD VERIFY COORDINATE ALL DUCT AND PIPING DIMENSIONS BEFORE FABRICATIONS.
- THE LOCATIONS OF ALL ITEMS SHOWN ON THE DRAWINGS OR CALLED FOR IN THE SPECIFICATIONS THAT ARE NOT DEFINITELY FIXED BY DIMENSIONS

- ARE APPROXIMATELY ONLY. THE EXACT LOCATIONS NECESSARY TO SECURE THE BEST CONDITIONS AND RESULTS MUST BE DETERMINED BY THE PROJECT SITE CONDITIONS AND SHALL HAVE THE APPROVAL OF THE ENGINEER BEFORE BEING INSTALLED. DO NOT SCALE DRAWINGS.
- CERTAIN ITEMS SUCH AS RISERS AND DROPS IN DUCTWORK, ACCESS DOORS, VOLUME DAMPERS, ETC., ARE INDICATED ON THE CONTRACT DOCUMENT DRAWINGS FOR CLARITY FOR A SPECIFIC LOCATION REQUIREMENT AND SHALL NOT BE INTERPRETED AS THE EXTENT OF THE REQUIREMENTS FOR THESE ITEMS. LOCATIONS OF ALL SUCH ITEMS SHALL BE INDICATED ON SHOP DRAWINGS BY THE INSTALLING CONTRACTOR FOR REVIEW AND APPROVAL DURING THE SHOP DRAWING PROCESS.
 - INSTALL PIPING SO THAT ALL VALVES, STRAINERS, UNIONS, TRAPS, FLANGES, AND OTHER APPURTENANCES REQUIRING ACCESS ARE ACCESSIBLE.

KEYED NOTES:

- CONTRACTOR TO FURNISH & INSTALL SUPPLY & RETURN DUCTWORK AS SHOWN ON PLAN. ALL DUCTWORK TO BE INTERNALLY LINED AND COORDINATED WITH PIPING AND VAV BOXES. ALL DUCTWORK EXTERNAL TO MEZZANINE 1 TO BE STACKED AND SHALL EXTEND NO FURTHER THAN 24" OFF OF MEZZANINE EXTERNAL WALL. CONSULT MECHANICAL ELEVATION BELOW FOR MORE INFORMATION.
- CONTRACTOR SHALL FURNISH & INSTALL VARIABLE AIR VOLUME BOX WITH HOT WATER REHEAT COILS (VAV-HW & CAV-HW) SUPPLY DUCTWORK, PIPING & DIFFUSERS AS SHOWN ON PLAN & SCHEDULED. FURNISH & INSTALL DDC CONTROLLER WITH ROOM SENSOR FOR BOX. REFER TO MECHANICAL CONTROL DIAGRAM FOR MORE INFORMATION.
- CONTRACTOR SHALL FURNISH & INSTALL EXHAUST DUCTWORK UP TO WAREHOUSE 3RD FLOOR (MEZZ 2). REFER TO L3 WAREHOUSE NEW DUCT & HEAT PLAN FOR MORE INFORMATION.
- CONTRACTOR SHALL FURNISH & INSTALL 24x24 WALL-MOUNTED ACCESS DOOR IN MEZZANINE EXTERIOR WALL TO ACCESS VAV BOX CONTROLS & PIPING; COORDINATE FINAL ACCESS DOOR LOCATION WITH VAVHW BOX LOCATION.

1 MECHANICAL L2 WAREHOUSE MEZZ 1 DUCT & HEAT PLAN
SCALE: 1/8" = 1'-0"



2 ELEVATION A - MECHANICAL L2 THRU L5 DUCTWORK ROUTING
SCALE: 1/8" = 1'-0"

TO THE BEST KNOWLEDGE, BELIEF AND PROFESSIONAL JUDGEMENT, THESE PLANS AND SPECIFICATIONS ARE IN COMPLIANCE WITH THE 2020 ENERGY CONSERVATION CONSTRUCTION CODE OF NEW YORK STATE.

ARCHITECT
di Domenico + Partners LLP
Architecture
Landscape Architecture
Planning
3743 Crescent Street, 3rd Floor
Long Island City, New York 11101
Tel 212-337-0400
Fax 212-337-3567

CIVIL PLANNING ENGINEER
JMC
JMC Planning Engineering Landscape
Architecture & Land Surveying, PLLC
120 Bedford Road
Armonk, New York 10504
Tel 914-273-5225
Fax 914-273-2102

MEP ENGINEER
Burns
BURNS ENGINEERING, PC.
1261 Broadway, Suite 708
New York, New York 10001
Tel 212-962-3503

STRUCTURAL ENGINEER
GEI
GEI50
1385 Broadway, 20th FL
New York, New York 10018
Tel 212-962-8282



MANHATTAN BEER DISTRIBUTORS
20 DUNNIGAN DRIVE
SUFFERN, NEW YORK

KEY PLAN

REV	DESCRIPTION	DATE
	ISSUED FOR DOB SUBMISSION	09/10/2021
	ISSUED FOR BID	10/15/2021
	ISSUED FOR PROGRESS	01/18/2022

DRAWN BY :

CHECKED BY :

APPROVED BY :

DATE :

SCALE :

DRAWING TITLE :

MECHANICAL L2 WAREHOUSE
MEZZ 1 DUCT & HEAT PLAN

DWG NUMBER :

M-108