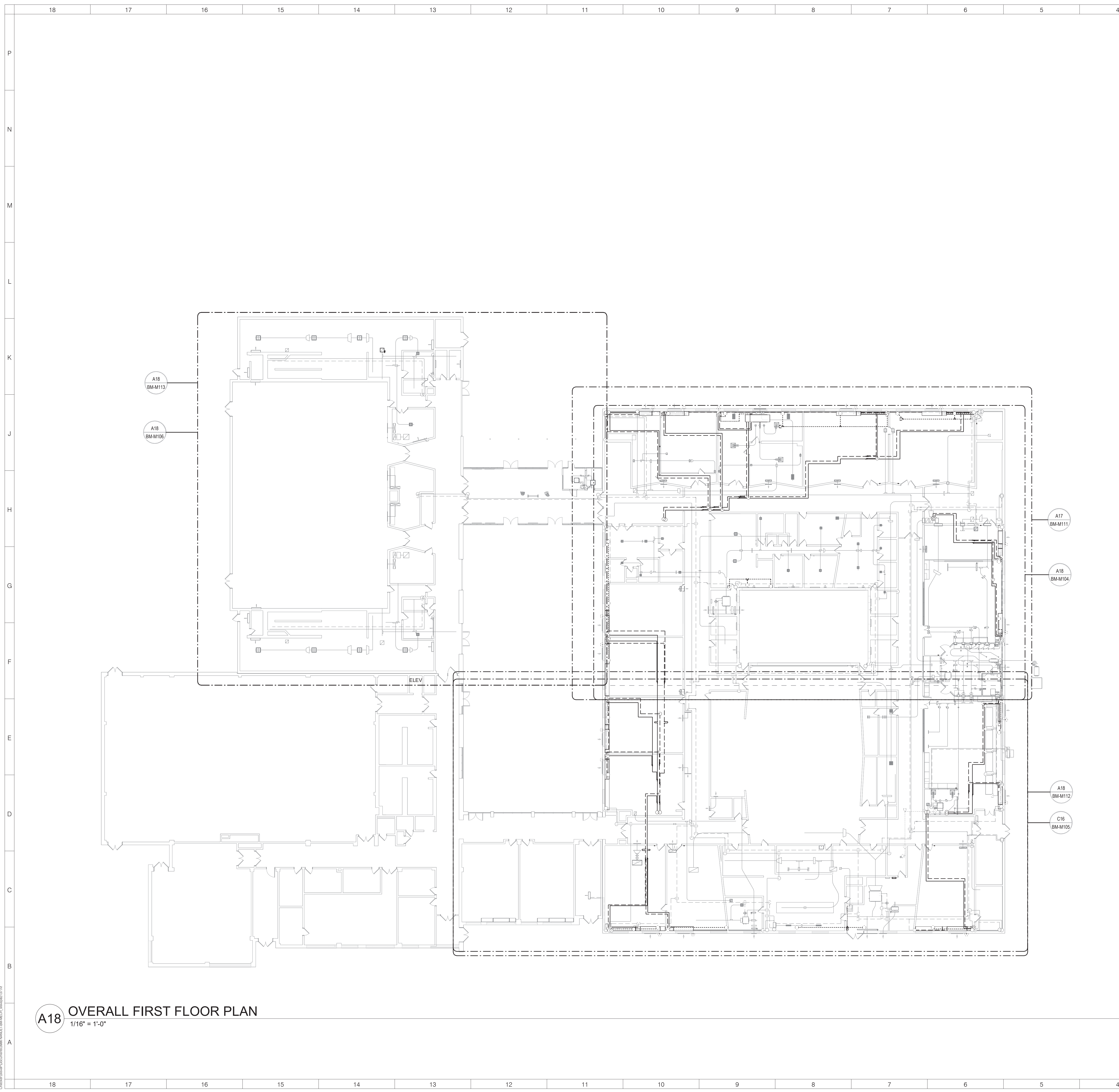


[illegible]

		18	17	16	15	14	13	12	11	10	9	8	7	6	5	4	3	2	1		ARCHITECT																																																																																																																																																																																																																																																																																																																																																																																																																																																																																																																																																																																																																																																																																																																																																																																																																																																																																																																																																																																																																																																																																																																																																																																																				
P		UNIT VENTILATOR SCHEDULE																				ksqdesign																																																																																																																																																																																																																																																																																																																																																																																																																																																																																																																																																																																																																																																																																																																																																																																																																																																																																																																																																																																																																																																																																																																																																																																																			
		1. PROVIDE WITH ELECTRICALLY COMMUTATED FAN MOTOR. OUTSIDE AIRFLOW RATES LISTED IS NON-ECONOMIZER MODE/MINIMUM OCCUPIED OA RATE. THE TESTING AND BALANCING AGENCY SHALL BALANCE THE OA THROUGH THE UV IN NON-ECONOMIZER MODE TO THE SCHEDULED VALUE. 2. PROVIDE EACH UNIT WITH REAR FALSE BACK AND BAFFLE THAT INCLUDES PIPING TUNNEL. THE MECHANICAL CONTRACTOR SHALL PROVIDE ADDITIONAL GASKETING TO ENSURE A PROPER SEAL OF THE OA PLENUM TO THE INTERIOR OF THE PERIMETER WALL. PROVIDE EACH UV WITH 1" THICK MERV-13 FILTERS.																				NEW YORK OKLAHOMA																																																																																																																																																																																																																																																																																																																																																																																																																																																																																																																																																																																																																																																																																																																																																																																																																																																																																																																																																																																																																																																																																																																																																																																																			
N		<table><tr><th rowspan="2">Mark</th><th rowspan="2">BASIS OF DESIGN MFG. AND MODEL</th><th rowspan="2">TYPE</th><th rowspan="2">LOCATION</th><th colspan="4">ELECTRICAL DATA</th><th colspan="4">SUPPLY FAN DATA</th><th colspan="4">VRV DX COOLING COIL</th><th colspan="4">HOT WATER HEATING COIL</th><th>LENGTH</th><th>WIDTH</th><th>HEIGHT</th><th>WEIGHT</th><th>REMARKS</th></tr><tr><th>MCA</th><th>MAX FUSE SIZE</th><th>VOLTS</th><th>PHASE</th><th>SUPPLY AIRFLOW</th><th>OUTSIDE AIRFLOW</th><th>FAN TYPE</th><th>Supply External Static Pressure</th><th>FAN SPEED</th><th>HP</th><th>CAPACITY TONNAGE</th><th>CAPACITY CAPS</th><th>EAT DB</th><th>EAT WB</th><th>LAT DB</th><th>LAT WB</th><th>COIL ROWS</th><th>Actual Heating Water Flow</th><th>CAPACITY</th><th>EAT</th><th>LAT</th><th>COIL ROWS</th><th>HEATING COIL VOLUME (GALLONS)</th><th>TEMPERATURE EWT</th><th>TEMPERATURE LWT</th><th>PRESSURE DROP (FEET)</th></tr><tr><td>UVMS-1</td><td>DAIKIN JAVS9H15</td><td>FLOOR MOUNTED</td><td>CLASSROOM 100B</td><td>3.8 A</td><td>15.00</td><td>208 V</td><td>1</td><td>1,083 CFM</td><td>360 CFM</td><td>ECM</td><td>0.00 in-wg</td><td>MEDIUM</td><td>0.33</td><td>38.287 Btu/h</td><td>31.321 Btu/h</td><td>80.9 °F</td><td>62.9 °F</td><td>54.2 °F</td><td>50.6 °F</td><td>4</td><td>2.0 GPM</td><td>65.728 Btu/h</td><td>45.1 °F</td><td>101.0 °F</td><td>2</td><td>0.82 gal</td><td>180 °F</td><td>114.3 °F</td><td>0.65</td><td>98"</td><td>21.78"</td><td>30.18"</td><td>600 lb</td><td>1,2</td></tr><tr><td>UVMS-2</td><td>DAIKIN JAVS9H15</td><td>FLOOR MOUNTED</td><td>CLASSROOM 100A</td><td>3.8 A</td><td>15.00</td><td>208 V</td><td>1</td><td>747 CFM</td><td>295 CFM</td><td>ECM</td><td>0.00 in-wg</td><td>HIGH</td><td>0.33</td><td>23.693 Btu/h</td><td>18.888 Btu/h</td><td>81.6 °F</td><td>62.8 °F</td><td>58.3 °F</td><td>51.9 °F</td><td>4</td><td>2.0 GPM</td><td>49.516 Btu/h</td><td>41.2 °F</td><td>102.3 °F</td><td>2</td><td>0.45 gal</td><td>180 °F</td><td>130.5 °F</td><td>1.21</td><td>62"</td><td>21.78"</td><td>30.18"</td><td>370 lb</td><td>1,2</td></tr><tr><td>UVMS-3</td><td>DAIKIN JAVF9H15</td><td>HORIZONTAL, SEMI-RECESSED, BOTTOM RETURN, REAR OUTSIDE AIR INLET, HORIZONTAL DUCTED DISCHARGE</td><td>CLASSROOM 102A</td><td>12.0 A</td><td>15.00</td><td>208 V</td><td>1</td><td>1,330 CFM</td><td>630 CFM</td><td>ECM</td><td>0.45 in-wg</td><td>MEDIUM</td><td>0.75</td><td>43,088 Btu/h</td><td>37,497 Btu/h</td><td>81.0 °F</td><td>62.9 °F</td><td>55.0 °F</td><td>51.7 °F</td><td>4</td><td>2.0 GPM</td><td>73,953 Btu/h</td><td>43.3 °F</td><td>95.5 °F</td><td>2</td><td>0.82 gal</td><td>180 °F</td><td>106.0 °F</td><td>0.65</td><td>98"</td><td>36"</td><td>16.58"</td><td>570 lb</td><td>1</td></tr><tr><td>UVMS-4</td><td>DAIKIN JAVS9H15</td><td>FLOOR MOUNTED</td><td>CLASSROOM 104</td><td>3.8 A</td><td>15.00</td><td>208 V</td><td>1</td><td>1,083 CFM</td><td>555 CFM</td><td>ECM</td><td>0.00 in-wg</td><td>MEDIUM</td><td>0.33</td><td>39,463 Btu/h</td><td>34,516 Btu/h</td><td>83.5 °F</td><td>62.6 °F</td><td>54.1 °F</td><td>48.6 °F</td><td>4</td><td>2.0 GPM</td><td>72,182 Btu/h</td><td>31.8 °F</td><td>93.3 °F</td><td>2</td><td>0.82 gal</td><td>180 °F</td><td>107.8 °F</td><td>0.65</td><td>98"</td><td>21.78"</td><td>30.18"</td><td>600 lb</td><td>1,2</td></tr><tr><td>UVMS-5</td><td>DAIKIN JAVS9H15</td><td>FLOOR MOUNTED</td><td>CLASSROOM 106</td><td>3.8 A</td><td>15.00</td><td>208 V</td><td>1</td><td>1,083 CFM</td><td>555 CFM</td><td>ECM</td><td>0.00 in-wg</td><td>MEDIUM</td><td>0.33</td><td>39,463 Btu/h</td><td>34,516 Btu/h</td><td>83.5 °F</td><td>62.6 °F</td><td>54.1 °F</td><td>48.6 °F</td><td>4</td><td>2.0 GPM</td><td>72,182 Btu/h</td><td>31.8 °F</td><td>93.3 °F</td><td>2</td><td>0.82 gal</td><td>180 °F</td><td>107.8 °F</td><td>0.65</td><td>98"</td><td>21.78"</td><td>30.18"</td><td>600 lb</td><td>1,2</td></tr><tr><td>UVMS-6</td><td>DAIKIN JAVS9H15</td><td>FLOOR MOUNTED WITH DRAFT STOP SYSTEM</td><td>SPECIAL ED CLASSROOM 112</td><td>3.8 A</td><td>15.00</td><td>208 V</td><td>1</td><td>1,083 CFM</td><td>495 CFM</td><td>ECM</td><td>0.00 in-wg</td><td>MEDIUM</td><td>0.33</td><td>39,327 Btu/h</td><td>33,398 Btu/h</td><td>82.5 °F</td><td>62.7 °F</td><td>54.1 °F</td><td>48.8 °F</td><td>4</td><td>2.0 GPM</td><td>69,762 Btu/h</td><td>36.8 °F</td><td>96.2 °F</td><td>2</td><td>0.82 gal</td><td>180 °F</td><td>110.2 °F</td><td>0.65</td><td>98"</td><td>21.78"</td><td>30.18"</td><td>600 lb</td><td>1,2</td></tr><tr><td>UVMS-7</td><td>DAIKIN JAVS9H15</td><td>FLOOR MOUNTED WITH DRAFT STOP SYSTEM</td><td>CLASSROOM 114</td><td>3.8 A</td><td>15.00</td><td>208 V</td><td>1</td><td>1,083 CFM</td><td>500 CFM</td><td>ECM</td><td>0.00 in-wg</td><td>MEDIUM</td><td>0.33</td><td>39,327 Btu/h</td><td>33,398 Btu/h</td><td>82.5 °F</td><td>62.7 °F</td><td>54.1 °F</td><td>48.8 °F</td><td>4</td><td>2.0 GPM</td><td>69,762 Btu/h</td><td>36.8 °F</td><td>96.2 °F</td><td>2</td><td>0.82 gal</td><td>180 °F</td><td>110.2 °F</td><td>0.65</td><td>98"</td><td>21.78"</td><td>30.18"</td><td>600 lb</td><td>1,2</td></tr><tr><td>UVMS-8</td><td>DAIKIN JAVS9H15</td><td>FLOOR MOUNTED WITH DRAFT STOP SYSTEM</td><td>CLASSROOM 114.5</td><td>3.8 A</td><td>15.00</td><td>208 V</td><td>1</td><td>1,083 CFM</td><td>540 CFM</td><td>ECM</td><td>0.00 in-wg</td><td>MEDIUM</td><td>0.33</td><td>39,388 Btu/h</td><td>34,176 Btu/h</td><td>82.2 °F</td><td>62.8 °F</td><td>54.0 °F</td><td>48.7 °F</td><td>4</td><td>2.0 GPM</td><td>71,410 Btu/h</td><td>33.1 °F</td><td>94.2 °F</td><td>2</td><td>0.82 gal</td><td>180 °F</td><td>108.6 °F</td><td>0.65</td><td>98"</td><td>21.78"</td><td>30.18"</td><td>600 lb</td><td>1,2</td></tr><tr><td>UVMS-9</td><td>DAIKIN JAVS9H15</td><td>FLOOR MOUNTED WITH DRAFT STOP SYSTEM</td><td>CLASSROOM 122</td><td>3.8 A</td><td>15.00</td><td>208 V</td><td>1</td><td>1,083 CFM</td><td>460 CFM</td><td>ECM</td><td>0.00 in-wg</td><td>MEDIUM</td><td>0.33</td><td>39,274 Btu/h</td><td>33,061 Btu/h</td><td>82.2 °F</td><td>62.7 °F</td><td>54.0 °F</td><td>50.1 °F</td><td>4</td><td>2.0 GPM</td><td>68,955 Btu/h</td><td>38.5 °F</td><td>97.1 °F</td><td>2</td><td>0.82 gal</td><td>180 °F</td><td>111.0 °F</td><td>0.65</td><td>98"</td><td>21.78"</td><td>30.18"</td><td>600 lb</td><td>1,2</td></tr><tr><td>UVMS-10</td><td>DAIKIN JAVS9H15</td><td>FLOOR MOUNTED WITH DRAFT STOP SYSTEM</td><td>CLASSROOM 124</td><td>3.8 A</td><td>15.00</td><td>208 V</td><td>1</td><td>1,083 CFM</td><td>460 CFM</td><td>ECM</td><td>0.00 in-wg</td><td>MEDIUM</td><td>0.33</td><td>39,274 Btu/h</td><td>33,061 Btu/h</td><td>82.2 °F</td><td>62.7 °F</td><td>54.0 °F</td><td>50.1 °F</td><td>4</td><td>2.0 GPM</td><td>68,955 Btu/h</td><td>38.5 °F</td><td>97.1 °F</td><td>2</td><td>0.82 gal</td><td>180 °F</td><td>111.0 °F</td><td>0.65</td><td>98"</td><td>21.78"</td><td>30.18"</td><td>600 lb</td><td>1,2</td></tr><tr><td>UVMS-11</td><td>DAIKIN JAVS9H15</td><td>FLOOR MOUNTED WITH DRAFT STOP SYSTEM</td><td>CLASSROOM 126</td><td>3.8 A</td><td>15.00</td><td>208 V</td><td>1</td><td>1,083 CFM</td><td>475 CFM</td><td>ECM</td><td>0.00 in-wg</td><td>MEDIUM</td><td>0.33</td><td>39,274 Btu/h</td><td>33,061 Btu/h</td><td>82.2 °F</td><td>62.7 °F</td><td>54.0 °F</td><td>50.1 °F</td><td>4</td><td>2.0 GPM</td><td>68,955 Btu/h</td><td>38.5 °F</td><td>97.1 °F</td><td>2</td><td>0.82 gal</td><td>180 °F</td><td>111.0 °F</td><td>0.65</td><td>98"</td><td>21.78"</td><td>30.18"</td><td>600 lb</td><td>1,2</td></tr><tr><td>UVMS-12</td><td>DAIKIN JAVS9H15</td><td>FLOOR MOUNTED WITH DRAFT STOP SYSTEM</td><td>CLASSROOM 128</td><td>3.8 A</td><td>15.00</td><td>208 V</td><td>1</td><td>1,083 CFM</td><td>430 CFM</td><td>ECM</td><td>0.00 in-wg</td><td>MEDIUM</td><td>0.33</td><td>39,274 Btu/h</td><td>32,715 Btu/h</td><td>81.9 °F</td><td>62.8 °F</td><td>54.0 °F</td><td>50.1 °F</td><td>4</td><td>2.0 GPM</td><td>68,183 Btu/h</td><td>40.0 °F</td><td>98.1 °F</td><td>2</td><td>0.82 gal</td><td>180 °F</td><td>111.8 °F</td><td>0.65</td><td>98"</td><td>21.78"</td><td>30.18"</td><td>600 lb</td><td>1,2</td></tr><tr><td>UVMS-13</td><td>DAIKIN JAVS9H15</td><td>FLOOR MOUNTED WITH DRAFT STOP SYSTEM</td><td>CLASSROOM 200</td><td>3.8 A</td><td>15.00</td><td>208 V</td><td>1</td><td>1,083 CFM</td><td>435 CFM</td><td>ECM</td><td>0.00 in-wg</td><td>MEDIUM</td><td>0.33</td><td>39,274 Btu/h</td><td>32,715 Btu/h</td><td>81.9 °F</td><td>62.8 °F</td><td>54.0 °F</td><td>50.1 °F</td><td>4</td><td>2.0 GPM</td><td>68,183 Btu/h</td><td>40.0 °F</td><td>98.1 °F</td><td>2</td><td>0.82 gal</td><td>180 °F</td><td>111.8 °F</td><td>0.65</td><td>98"</td><td>21.78"</td><td>30.18"</td><td>600 lb</td><td>1,2</td></tr><tr><td>UVMS-14</td><td>DAIKIN JAVS9H15</td><td>FLOOR MOUNTED WITH DRAFT STOP SYSTEM</td><td>CLASSROOM 202</td><td>3.8 A</td><td>15.00</td><td>208 V</td><td>1</td><td>1,083 CFM</td><td>435 CFM</td><td>ECM</td><td>0.00 in-wg</td><td>MEDIUM</td><td>0.33</td><td>39,274 Btu/h</td><td>32,715 Btu/h</td><td>81.9 °F</td><td>62.8 °F</td><td>54.0 °F</td><td>50.1 °F</td><td>4</td><td>2.0 GPM</td><td>68,183 Btu/h</td><td>40.0 °F</td><td>98.1 °F</td><td>2</td><td>0.82 gal</td><td>180 °F</td><td>111.8 °F</td><td>0.65</td><td>98"</td><td>21.78"</td><td>30.18"</td><td>600 lb</td><td>1,2</td></tr><tr><td>UVMS-15</td><td>DAIKIN JAVS9H15</td><td>FLOOR MOUNTED WITH DRAFT STOP SYSTEM</td><td>CLASSROOM 203</td><td>3.8 A</td><td>15.00</td><td>208 V</td><td>1</td><td>1,083 CFM</td><td>480 CFM</td><td>ECM</td><td>0.00 in-wg</td><td>MEDIUM</td><td>0.33</td><td>39,327 Btu/h</td><td>33,398 Btu/h</td><td>82.5 °F</td><td>62.7 °F</td><td>54.1 °F</td><td>48.8 °F</td><td>4</td><td>2.0 GPM</td><td>69,762 Btu/h</td><td>36.8 °F</td><td>96.2 °F</td><td>2</td><td>0.82 gal</td><td>180 °F</td><td>110.2 °F</td><td>0.65</td><td>98"</td><td>21.78"</td><td>30.18"</td><td>600 lb</td><td>1,2</td></tr><tr><td>UVMS-16</td><td>DAIKIN JAVS9H15</td><td>FLOOR MOUNTED WITH DRAFT STOP SYSTEM</td><td>CLASSROOM 204</td><td>3.8 A</td><td>15.00</td><td>208 V</td><td>1</td><td>1,083 CFM</td><td>440 CFM</td><td>ECM</td><td>0.00 in-wg</td><td>MEDIUM</td><td>0.33</td><td>39,274 Btu/h</td><td>33,061 Btu/h</td><td>82.2 °F</td><td>62.7 °F</td><td>54.0 °F</td><td>50.1 °F</td><td>4</td><td>2.0 GPM</td><td>68,955 Btu/h</td><td>38.5 °F</td><td>97.1 °F</td><td>2</td><td>0.82 gal</td><td>180 °F</td><td>111.0 °F</td><td>0.65</td><td>98"</td><td>21.78"</td><td>30.18"</td><td>600 lb</td><td>1,2</td></tr><tr><td>UVMS-17</td><td>DAIKIN JAVS9H15</td><td>FLOOR MOUNTED WITH DRAFT STOP SYSTEM</td><td>CLASSROOM 205</td><td>3.8 A</td><td>15.00</td><td>208 V</td><td>1</td><td>1,083 CFM</td><td>480 CFM</td><td>ECM</td><td>0.00 in-wg</td><td>MEDIUM</td><td>0.33</td><td>39,327 Btu/h</td><td>33,398 Btu/h</td><td>82.5 °F</td><td>62.7 °F</td><td>54.1 °F</td><td>48.8 °F</td><td>4</td><td>2.0 GPM</td><td>69,762 Btu/h</td><td>36.8 °F</td><td>96.2 °F</td><td>2</td><td>0.82 gal</td><td>180 °F</td><td>110.2 °F</td><td>0.65</td><td>98"</td><td>21.78"</td><td>30.18"</td><td>600 lb</td><td>1,2</td></tr><tr><td>UVMS-18</td><td>DAIKIN JAVS9H15</td><td>FLOOR MOUNTED WITH DRAFT STOP SYSTEM</td><td>CLASSROOM 206</td><td>3.8 A</td><td>15.00</td><td>208 V</td><td>1</td><td>1,083 CFM</td><td>435 CFM</td><td>ECM</td><td>0.00 in-wg</td><td>MEDIUM</td><td>0.33</td><td>39,274 Btu/h</td><td>32,715 Btu/h</td><td>81.9 °F</td><td>62.8 °F</td><td>54.0 °F</td><td>50.1 °F</td><td>4</td><td>2.0 GPM</td><td>68,183 Btu/h</td><td>40.0 °F</td><td>98.1 °F</td><td>2</td><td>0.82 gal</td><td>180 °F</td><td>111.8 °F</td><td>0.65</td><td>98"</td><td>21.78"</td><td>30.18"</td><td>600 lb</td><td>1,2</td></tr><tr><td>UVMS-19</td><td>DAIKIN JAVS9H15</td><td>FLOOR MOUNTED WITH DRAFT STOP SYSTEM</td><td>CLASSROOM 207</td><td>3.8 A</td><td>15.00</td><td>208 V</td><td>1</td><td>1,083 CFM</td><td>485 CFM</td><td>ECM</td><td>0.00 in-wg</td><td>MEDIUM</td><td>0.33</td><td>39,327 Btu/h</td><td>33,398 Btu/h</td><td>82.5 °F</td><td>62.7 °F</td><td>54.1 °F</td><td>48.8 °F</td><td>4</td><td>2.0 GPM</td><td>69,762 Btu/h</td><td>36.8 °F</td><td>96.2 °F</td><td>2</td><td>0.82 gal</td><td>180 °F</td><td>110.2 °F</td><td>0.65</td><td>98"</td><td>21.78"</td><td>30.18"</td><td>600 lb</td><td>1,2</td></tr><tr><td>UVMS-20</td><td>DAIKIN JAVS9H15</td><td>FLOOR MOUNTED WITH DRAFT STOP SYSTEM</td><td>CLASSROOM 207</td><td>3.8 A</td><td>15.00</td><td>208 V</td><td>1</td><td>1,083 CFM</td><td>485 CFM</td><td>ECM</td><td>0.00 in-wg</td><td>MEDIUM</td><td>0.33</td><td>39,327 Btu/h</td><td>33,398 Btu/h</td><td>82.5 °F</td><td>62.7 °F</td><td>54.1 °F</td><td>48.8 °F</td><td>4</td><td>2.0 GPM</td><td>69,762 Btu/h</td><td>36.8 °F</td><td>96.2 °F</td><td>2</td><td>0.82 gal</td><td>180 °F</td><td>110.2 °F</td><td>0.65</td><td>98"</td><td>21.78"</td><td>30.18"</td><td>600 lb</td><td>1,2</td></tr><tr><td>UVMS-21</td><td>DAIKIN JAVS9H15</td><td>FLOOR MOUNTED WITH DRAFT STOP SYSTEM</td><td>CLASSROOM 208</td><td>3.8 A</td><td>15.00</td><td>208 V</td><td>1</td><td>1,083 CFM</td><td>435 CFM</td><td>ECM</td><td>0.00 in-wg</td><td>MEDIUM</td><td>0.33</td><td>39,274 Btu/h</td><td>32,715 Btu/h</td><td>81.9 °F</td><td>62.8 °F</td><td>54.0 °F</td><td>50.1 °F</td><td>4</td><td>2.0 GPM</td><td>68,183 Btu/h</td><td>40.0 °F</td><td>98.1 °F</td><td>2</td><td>0.82 gal</td><td>180 °F</td><td>111.8 °F</td><td>0.65</td><td>98"</td><td>21.78"</td><td>30.18"</td><td>600 lb</td><td>1,2</td></tr><tr><td>UVMS-22</td><td>DAIKIN JAVS9H15</td><td>FLOOR MOUNTED WITH DRAFT STOP SYSTEM</td><td>CLASSROOM 210</td><td>3.8 A</td><td>15.00</td><td>208 V</td><td>1</td><td>1,083 CFM</td><td>445 CFM</td><td>ECM</td><td>0.00 in-wg</td><td>MEDIUM</td><td>0.33</td><td>39,274 Btu/h</td><td>32,715 Btu/h</td><td>81.9 °F</td><td>62.8 °F</td><td>54.0 °F</td><td>50.1 °F</td><td>4</td><td>2.0 GPM</td><td>68,183 Btu/h</td><td>40.0 °F</td><td>98.1 °F</td><td>2</td><td>0.82 gal</td><td>180 °F</td><td>111.8 °F</td><td>0.65</td><td>98"</td><td>21.78"</td><td>30.18"</td><td>600 lb</td><td>1,2</td></tr><tr><td>UVMS-23</td><td>DAIKIN JAVS9H15</td><td>FLOOR MOUNTED WITH DRAFT STOP SYSTEM</td><td>CLASSROOM 212</td><td>3.8 A</td><td>15.00</td><td>208 V</td><td>1</td><td>1,083 CFM</td><td>485 CFM</td><td>ECM</td><td>0.00 in-wg</td><td>MEDIUM</td><td>0.33</td><td>39,327 Btu/h</td><td>33,398 Btu/h</td><td>82.5 °F</td><td>62.7 °F</td><td>54.1 °F</td><td>48.8 °F</td><td>4</td><td>2.0 GPM</td><td>69,762 Btu/h</td><td>36.8 °F</td><td>96.2 °F</td><td>2</td><td>0.82 gal</td><td>180 °F</td><td>110.2 °F</td><td>0.65</td><td>98"</td><td>21.78"</td><td>30.18"</td><td>600 lb</td><td>1,2</td></tr><tr><td>UVMS-24</td><td>DAIKIN JAVS9H15</td><td>FLOOR MOUNTED WITH DRAFT STOP SYSTEM</td><td>CLASSROOM 214</td><td>3.8 A</td><td>15.00</td><td>208 V</td><td>1</td><td>1,083 CFM</td><td>360 CFM</td><td>ECM</td><td>0.00 in-wg</td><td>MEDIUM</td><td>0.33</td><td>39,287 Btu/h</td><td>31,321 Btu/h</td><td>80.9 °F</td><td>62.9 °F</td><td>54.2 °F</td><td>50.6 °F</td><td>4</td><td>2.0 GPM</td><td>65,728 Btu/h</td><td>45.1 °F</td><td>101.0 °F</td><td>2</td><td>0.82 gal</td><td>180 °F</td><td>114.3 °F</td><td>0.65</td><td>98"</td><td>21.78"</td><td>30.18"</td><td>600 lb</td><td>1,2</td></tr><tr><td>UVMS-25</td><td>DAIKIN JAVS9H15</td><td>FLOOR MOUNTED WITH DRAFT STOP SYSTEM</td><td>CLASSROOM 216</td><td>3.8 A</td><td>15.00</td><td>208 V</td><td>1</td><td>1,083 CFM</td><td>365 CFM</td><td>ECM</td><td>0.00 in-wg</td><td>MEDIUM</td><td>0.33</td><td>39,274 Btu/h</td><td>33,398 Btu/h</td><td>81.9 °F</td><td>62.8 °F</td><td>54.0 °F</td><td>50.1 °F</td><td>4</td><td>2.0 GPM</td><td>68,955 Btu/h</td><td>38.5 °F</td><td>97.1 °F</td><td>2</td><td>0.82 gal</td><td>180 °F</td><td>111.0 °F</td><td>0.65</td><td>98"</td><td>21.78"</td><td>30.18"</td><td>600 lb</td><td>1,2</td></tr><tr><td>UVMS-26</td><td>DAIKIN JAVS9H15</td><td>FLOOR MOUNTED WITH DRAFT STOP SYSTEM</td><td>CLASSROOM 218</td><td>3.8 A</td><td>15.00</td><td>208 V</td><td>1</td><td>1,083 CFM</td><td>455 CFM</td><td>ECM</td><td>0.00 in-wg</td><td>MEDIUM</td><td>0.33</td><td>39,274 Btu/h</td><td>33,061 Btu/h</td><td>82.2 °F</td><td>62.7 °F</td><td>54.0 °F</td><td>50.1 °F</td><td>4</td><td>2.0 GPM</td><td>68,955 Btu/h</td><td>38.5 °F</td><td>97.1 °F</td><td>2</td><td>0.82 gal</td><td>180 °F</td><td>111.0 °F</td><td>0.65</td><td>98"</td><td>21.78"</td><td>30.18"</td><td>600 lb</td><td>1,2</td></tr><tr><td>UVMS-27</td><td>DAIKIN JAVS9H15</td><td>FLOOR MOUNTED WITH DRAFT STOP SYSTEM</td><td>CLASSROOM 220</td><td>3.8 A</td><td>15.00</td><td>208 V</td><td>1</td><td>1,083 CFM</td><td>455 CFM</td><td>ECM</td><td>0.00 in-wg</td><td>MEDIUM</td><td>0.33</td><td>39,274 Btu/h</td><td>33,061 Btu/h</td><td>82.2 °F</td><td>62.7 °F</td><td>54.0 °F</td><td>50.1 °F</td><td>4</td><td>2.0 GPM</td><td>68,955 Btu/h</td><td>38.5 °F</td><td>97.1 °F</td><td>2</td><td>0.82 gal</td><td>180 °F</td><td>111.0 °F</td><td>0.65</td><td>98"</td><td>21.78"</td><td>30.18"</td><td>600 lb</td><td>1,2</td></tr><tr><td>UVMS-28</td><td>DAIKIN JAVS9H15</td><td>FLOOR MOUNTED WITH DRAFT STOP SYSTEM</td><td>SCIENCE LAB 222</td><td>3.8 A</td><td>15.00</td><td>208 V</td><td>1</td><td>1,083 CFM</td><td>585 CFM</td><td>ECM</td><td>0.00 in-wg</td><td>MEDIUM</td><td>0.33</td><td>39,463 Btu/h</td><td>34,516 Btu/h</td><td>83.5 °F</td><td>62.6 °F</td><td>54.1 °F</td><td>48.6 °F</td><td>4</td><td>2.0 GPM</td><td>72,182 Btu/h</td><td>31.8 °F</td><td>93.3 °F</td><td>2</td><td>0.82 gal</td><td>180 °F</td><td>107.8 °F</td><td>0.65</td><td>98"</td><td>21.78"</td><td>30.18"</td><td>600 lb</td><td>1,2</td></tr><tr><td>UVMS-29</td><td>DAIKIN JAVS9H15</td><td>FLOOR MOUNTED WITH DRAFT STOP SYSTEM</td><td>SCIENCE LAB 224</td><td>3.8 A</td><td>15.00</td><td>208 V</td><td>1</td><td>1,083 CFM</td><td>510 CFM</td><td>ECM</td><td>0.00 in-wg</td><td>MEDIUM</td><td>0.33</td><td>39,287 Btu/h</td><td>33,722 Btu/h</td><td>82.8 °F</td><td>62.6 °F</td><td>54.1 °F</td><td>48.8 °F</td><td>4</td><td>2.0 GPM</td><td>70,603 Btu/h</td><td>35.1 °F</td><td>95.2 °F</td><td>2</td><td>0.82 gal</td><td>180 °F</td><td>109.4 °F</td><td>0.65</td><td>98"</td><td>21.78"</td><td>30.18"</td><td>600 lb</td><td>1,2</td></tr><tr><td>UVMS-30</td><td>DAIKIN JAVS9H15</td><td>FLOOR MOUNTED WITH DRAFT STOP SYSTEM</td><td>COMPUTER CLASSROOM 226</td><td>3.8 A</td><td>15.00</td><td>208 V</td><td>1</td><td>1,083 CFM</td><td>445 CFM</td><td>ECM</td><td>0.00 in-wg</td><td>MEDIUM</td><td>0.33</td><td>39,327 Btu/h</td><td>33,398 Btu/h</td><td>82.5 °F</td><td>62.7 °F</td><td>54.1 °F</td><td>48.8 °F</td><td>4</td><td>2.0 GPM</td><td>69,762 Btu/h</td><td>36.8 °F</td><td>96.2 °F</td><td>2</td><td>0.82 gal</td><td>180 °F</td><td>110.2 °F</td><td>0.65</td><td>98"</td><td>21.78"</td><td>30.18"</td><td>600 lb</td><td>1,2</td></tr><tr><td>UVMS-31</td><td>DAIKIN JAVS9H15</td><td>FLOOR MOUNTED WITH DRAFT STOP SYSTEM</td><td>SCIENCE LAB 228</td><td>3.8 A</td><td>15.00</td><td>208 V</td><td>1</td><td>1,083 CFM</td><td>545 CFM</td><td>ECM</td><td>0.00 in-wg</td><td>MEDIUM</td><td>0.33</td><td>39,388 Btu/h</td><td>34,176 Btu/h</td><td>83.2 °F</td><td>62.6 °F</td><td>54.1 °F</td><td>48.7 °F</td><td>4</td><td>2.0 GPM</td><td>71,410 Btu/h</td><td>33.1 °F</td><td>94.2 °F</td><td>2</td><td>0.82 gal</td><td>180 °F</td><td>108.6 °F</td><td>0.65</td><td>98"</td><td>21.78"</td><td>30.18"</td><td>600 lb</td><td>1,2</td></tr><tr><td>UVMS-32</td><td>DAIKIN JAVS9H15</td><td>FLOOR MOUNTED WITH DRAFT STOP SYSTEM</td><td>SCIENCE LAB 230</td><td>3.8 A</td><td>15.00</td><td>208 V</td><td>1</td><td>1,083 CFM</td><td>520 CFM</td><td>ECM</td><td>0.00 in-wg</td><td>MEDIUM</td><td>0.33</td><td>39,287 Btu/h</td><td>33,722 Btu/h</td><td>82.8 °F</td><td>62.6 °F</td><td>54.1 °F</td><td>48.8 °F</td><td>4</</td></tr></table>																			Mark	BASIS OF DESIGN MFG. AND MODEL	TYPE	LOCATION	ELECTRICAL DATA				SUPPLY FAN DATA				VRV DX COOLING COIL				HOT WATER HEATING COIL				LENGTH	WIDTH	HEIGHT	WEIGHT	REMARKS	MCA	MAX FUSE SIZE	VOLTS	PHASE	SUPPLY AIRFLOW	OUTSIDE AIRFLOW	FAN TYPE	Supply External Static Pressure	FAN SPEED	HP	CAPACITY TONNAGE	CAPACITY CAPS	EAT DB	EAT WB	LAT DB	LAT WB	COIL ROWS	Actual Heating Water Flow	CAPACITY	EAT	LAT	COIL ROWS	HEATING COIL VOLUME (GALLONS)	TEMPERATURE EWT	TEMPERATURE LWT	PRESSURE DROP (FEET)	UVMS-1	DAIKIN JAVS9H15	FLOOR MOUNTED	CLASSROOM 100B	3.8 A	15.00	208 V	1	1,083 CFM	360 CFM	ECM	0.00 in-wg	MEDIUM	0.33	38.287 Btu/h	31.321 Btu/h	80.9 °F	62.9 °F	54.2 °F	50.6 °F	4	2.0 GPM	65.728 Btu/h	45.1 °F	101.0 °F	2	0.82 gal	180 °F	114.3 °F	0.65	98"	21.78"	30.18"	600 lb	1,2	UVMS-2	DAIKIN JAVS9H15	FLOOR MOUNTED	CLASSROOM 100A	3.8 A	15.00	208 V	1	747 CFM	295 CFM	ECM	0.00 in-wg	HIGH	0.33	23.693 Btu/h	18.888 Btu/h	81.6 °F	62.8 °F	58.3 °F	51.9 °F	4	2.0 GPM	49.516 Btu/h	41.2 °F	102.3 °F	2	0.45 gal	180 °F	130.5 °F	1.21	62"	21.78"	30.18"	370 lb	1,2	UVMS-3	DAIKIN JAVF9H15	HORIZONTAL, SEMI-RECESSED, BOTTOM RETURN, REAR OUTSIDE AIR INLET, HORIZONTAL DUCTED DISCHARGE	CLASSROOM 102A	12.0 A	15.00	208 V	1	1,330 CFM	630 CFM	ECM	0.45 in-wg	MEDIUM	0.75	43,088 Btu/h	37,497 Btu/h	81.0 °F	62.9 °F	55.0 °F	51.7 °F	4	2.0 GPM	73,953 Btu/h	43.3 °F	95.5 °F	2	0.82 gal	180 °F	106.0 °F	0.65	98"	36"	16.58"	570 lb	1	UVMS-4	DAIKIN JAVS9H15	FLOOR MOUNTED	CLASSROOM 104	3.8 A	15.00	208 V	1	1,083 CFM	555 CFM	ECM	0.00 in-wg	MEDIUM	0.33	39,463 Btu/h	34,516 Btu/h	83.5 °F	62.6 °F	54.1 °F	48.6 °F	4	2.0 GPM	72,182 Btu/h	31.8 °F	93.3 °F	2	0.82 gal	180 °F	107.8 °F	0.65	98"	21.78"	30.18"	600 lb	1,2	UVMS-5	DAIKIN JAVS9H15	FLOOR MOUNTED	CLASSROOM 106	3.8 A	15.00	208 V	1	1,083 CFM	555 CFM	ECM	0.00 in-wg	MEDIUM	0.33	39,463 Btu/h	34,516 Btu/h	83.5 °F	62.6 °F	54.1 °F	48.6 °F	4	2.0 GPM	72,182 Btu/h	31.8 °F	93.3 °F	2	0.82 gal	180 °F	107.8 °F	0.65	98"	21.78"	30.18"	600 lb	1,2	UVMS-6	DAIKIN JAVS9H15	FLOOR MOUNTED WITH DRAFT STOP SYSTEM	SPECIAL ED CLASSROOM 112	3.8 A	15.00	208 V	1	1,083 CFM	495 CFM	ECM	0.00 in-wg	MEDIUM	0.33	39,327 Btu/h	33,398 Btu/h	82.5 °F	62.7 °F	54.1 °F	48.8 °F	4	2.0 GPM	69,762 Btu/h	36.8 °F	96.2 °F	2	0.82 gal	180 °F	110.2 °F	0.65	98"	21.78"	30.18"	600 lb	1,2	UVMS-7	DAIKIN JAVS9H15	FLOOR MOUNTED WITH DRAFT STOP SYSTEM	CLASSROOM 114	3.8 A	15.00	208 V	1	1,083 CFM	500 CFM	ECM	0.00 in-wg	MEDIUM	0.33	39,327 Btu/h	33,398 Btu/h	82.5 °F	62.7 °F	54.1 °F	48.8 °F	4	2.0 GPM	69,762 Btu/h	36.8 °F	96.2 °F	2	0.82 gal	180 °F	110.2 °F	0.65	98"	21.78"	30.18"	600 lb	1,2	UVMS-8	DAIKIN JAVS9H15	FLOOR MOUNTED WITH DRAFT STOP SYSTEM	CLASSROOM 114.5	3.8 A	15.00	208 V	1	1,083 CFM	540 CFM	ECM	0.00 in-wg	MEDIUM	0.33	39,388 Btu/h	34,176 Btu/h	82.2 °F	62.8 °F	54.0 °F	48.7 °F	4	2.0 GPM	71,410 Btu/h	33.1 °F	94.2 °F	2	0.82 gal	180 °F	108.6 °F	0.65	98"	21.78"	30.18"	600 lb	1,2	UVMS-9	DAIKIN JAVS9H15	FLOOR MOUNTED WITH DRAFT STOP SYSTEM	CLASSROOM 122	3.8 A	15.00	208 V	1	1,083 CFM	460 CFM	ECM	0.00 in-wg	MEDIUM	0.33	39,274 Btu/h	33,061 Btu/h	82.2 °F	62.7 °F	54.0 °F	50.1 °F	4	2.0 GPM	68,955 Btu/h	38.5 °F	97.1 °F	2	0.82 gal	180 °F	111.0 °F	0.65	98"	21.78"	30.18"	600 lb	1,2	UVMS-10	DAIKIN JAVS9H15	FLOOR MOUNTED WITH DRAFT STOP SYSTEM	CLASSROOM 124	3.8 A	15.00	208 V	1	1,083 CFM	460 CFM	ECM	0.00 in-wg	MEDIUM	0.33	39,274 Btu/h	33,061 Btu/h	82.2 °F	62.7 °F	54.0 °F	50.1 °F	4	2.0 GPM	68,955 Btu/h	38.5 °F	97.1 °F	2	0.82 gal	180 °F	111.0 °F	0.65	98"	21.78"	30.18"	600 lb	1,2	UVMS-11	DAIKIN JAVS9H15	FLOOR MOUNTED WITH DRAFT STOP SYSTEM	CLASSROOM 126	3.8 A	15.00	208 V	1	1,083 CFM	475 CFM	ECM	0.00 in-wg	MEDIUM	0.33	39,274 Btu/h	33,061 Btu/h	82.2 °F	62.7 °F	54.0 °F	50.1 °F	4	2.0 GPM	68,955 Btu/h	38.5 °F	97.1 °F	2	0.82 gal	180 °F	111.0 °F	0.65	98"	21.78"	30.18"	600 lb	1,2	UVMS-12	DAIKIN JAVS9H15	FLOOR MOUNTED WITH DRAFT STOP SYSTEM	CLASSROOM 128	3.8 A	15.00	208 V	1	1,083 CFM	430 CFM	ECM	0.00 in-wg	MEDIUM	0.33	39,274 Btu/h	32,715 Btu/h	81.9 °F	62.8 °F	54.0 °F	50.1 °F	4	2.0 GPM	68,183 Btu/h	40.0 °F	98.1 °F	2	0.82 gal	180 °F	111.8 °F	0.65	98"	21.78"	30.18"	600 lb	1,2	UVMS-13	DAIKIN JAVS9H15	FLOOR MOUNTED WITH DRAFT STOP SYSTEM	CLASSROOM 200	3.8 A	15.00	208 V	1	1,083 CFM	435 CFM	ECM	0.00 in-wg	MEDIUM	0.33	39,274 Btu/h	32,715 Btu/h	81.9 °F	62.8 °F	54.0 °F	50.1 °F	4	2.0 GPM	68,183 Btu/h	40.0 °F	98.1 °F	2	0.82 gal	180 °F	111.8 °F	0.65	98"	21.78"	30.18"	600 lb	1,2	UVMS-14	DAIKIN JAVS9H15	FLOOR MOUNTED WITH DRAFT STOP SYSTEM	CLASSROOM 202	3.8 A	15.00	208 V	1	1,083 CFM	435 CFM	ECM	0.00 in-wg	MEDIUM	0.33	39,274 Btu/h	32,715 Btu/h	81.9 °F	62.8 °F	54.0 °F	50.1 °F	4	2.0 GPM	68,183 Btu/h	40.0 °F	98.1 °F	2	0.82 gal	180 °F	111.8 °F	0.65	98"	21.78"	30.18"	600 lb	1,2	UVMS-15	DAIKIN JAVS9H15	FLOOR MOUNTED WITH DRAFT STOP SYSTEM	CLASSROOM 203	3.8 A	15.00	208 V	1	1,083 CFM	480 CFM	ECM	0.00 in-wg	MEDIUM	0.33	39,327 Btu/h	33,398 Btu/h	82.5 °F	62.7 °F	54.1 °F	48.8 °F	4	2.0 GPM	69,762 Btu/h	36.8 °F	96.2 °F	2	0.82 gal	180 °F	110.2 °F	0.65	98"	21.78"	30.18"	600 lb	1,2	UVMS-16	DAIKIN JAVS9H15	FLOOR MOUNTED WITH DRAFT STOP SYSTEM	CLASSROOM 204	3.8 A	15.00	208 V	1	1,083 CFM	440 CFM	ECM	0.00 in-wg	MEDIUM	0.33	39,274 Btu/h	33,061 Btu/h	82.2 °F	62.7 °F	54.0 °F	50.1 °F	4	2.0 GPM	68,955 Btu/h	38.5 °F	97.1 °F	2	0.82 gal	180 °F	111.0 °F	0.65	98"	21.78"	30.18"	600 lb	1,2	UVMS-17	DAIKIN JAVS9H15	FLOOR MOUNTED WITH DRAFT STOP SYSTEM	CLASSROOM 205	3.8 A	15.00	208 V	1	1,083 CFM	480 CFM	ECM	0.00 in-wg	MEDIUM	0.33	39,327 Btu/h	33,398 Btu/h	82.5 °F	62.7 °F	54.1 °F	48.8 °F	4	2.0 GPM	69,762 Btu/h	36.8 °F	96.2 °F	2	0.82 gal	180 °F	110.2 °F	0.65	98"	21.78"	30.18"	600 lb	1,2	UVMS-18	DAIKIN JAVS9H15	FLOOR MOUNTED WITH DRAFT STOP SYSTEM	CLASSROOM 206	3.8 A	15.00	208 V	1	1,083 CFM	435 CFM	ECM	0.00 in-wg	MEDIUM	0.33	39,274 Btu/h	32,715 Btu/h	81.9 °F	62.8 °F	54.0 °F	50.1 °F	4	2.0 GPM	68,183 Btu/h	40.0 °F	98.1 °F	2	0.82 gal	180 °F	111.8 °F	0.65	98"	21.78"	30.18"	600 lb	1,2	UVMS-19	DAIKIN JAVS9H15	FLOOR MOUNTED WITH DRAFT STOP SYSTEM	CLASSROOM 207	3.8 A	15.00	208 V	1	1,083 CFM	485 CFM	ECM	0.00 in-wg	MEDIUM	0.33	39,327 Btu/h	33,398 Btu/h	82.5 °F	62.7 °F	54.1 °F	48.8 °F	4	2.0 GPM	69,762 Btu/h	36.8 °F	96.2 °F	2	0.82 gal	180 °F	110.2 °F	0.65	98"	21.78"	30.18"	600 lb	1,2	UVMS-20	DAIKIN JAVS9H15	FLOOR MOUNTED WITH DRAFT STOP SYSTEM	CLASSROOM 207	3.8 A	15.00	208 V	1	1,083 CFM	485 CFM	ECM	0.00 in-wg	MEDIUM	0.33	39,327 Btu/h	33,398 Btu/h	82.5 °F	62.7 °F	54.1 °F	48.8 °F	4	2.0 GPM	69,762 Btu/h	36.8 °F	96.2 °F	2	0.82 gal	180 °F	110.2 °F	0.65	98"	21.78"	30.18"	600 lb	1,2	UVMS-21	DAIKIN JAVS9H15	FLOOR MOUNTED WITH DRAFT STOP SYSTEM	CLASSROOM 208	3.8 A	15.00	208 V	1	1,083 CFM	435 CFM	ECM	0.00 in-wg	MEDIUM	0.33	39,274 Btu/h	32,715 Btu/h	81.9 °F	62.8 °F	54.0 °F	50.1 °F	4	2.0 GPM	68,183 Btu/h	40.0 °F	98.1 °F	2	0.82 gal	180 °F	111.8 °F	0.65	98"	21.78"	30.18"	600 lb	1,2	UVMS-22	DAIKIN JAVS9H15	FLOOR MOUNTED WITH DRAFT STOP SYSTEM	CLASSROOM 210	3.8 A	15.00	208 V	1	1,083 CFM	445 CFM	ECM	0.00 in-wg	MEDIUM	0.33	39,274 Btu/h	32,715 Btu/h	81.9 °F	62.8 °F	54.0 °F	50.1 °F	4	2.0 GPM	68,183 Btu/h	40.0 °F	98.1 °F	2	0.82 gal	180 °F	111.8 °F	0.65	98"	21.78"	30.18"	600 lb	1,2	UVMS-23	DAIKIN JAVS9H15	FLOOR MOUNTED WITH DRAFT STOP SYSTEM	CLASSROOM 212	3.8 A	15.00	208 V	1	1,083 CFM	485 CFM	ECM	0.00 in-wg	MEDIUM	0.33	39,327 Btu/h	33,398 Btu/h	82.5 °F	62.7 °F	54.1 °F	48.8 °F	4	2.0 GPM	69,762 Btu/h	36.8 °F	96.2 °F	2	0.82 gal	180 °F	110.2 °F	0.65	98"	21.78"	30.18"	600 lb	1,2	UVMS-24	DAIKIN JAVS9H15	FLOOR MOUNTED WITH DRAFT STOP SYSTEM	CLASSROOM 214	3.8 A	15.00	208 V	1	1,083 CFM	360 CFM	ECM	0.00 in-wg	MEDIUM	0.33	39,287 Btu/h	31,321 Btu/h	80.9 °F	62.9 °F	54.2 °F	50.6 °F	4	2.0 GPM	65,728 Btu/h	45.1 °F	101.0 °F	2	0.82 gal	180 °F	114.3 °F	0.65	98"	21.78"	30.18"	600 lb	1,2	UVMS-25	DAIKIN JAVS9H15	FLOOR MOUNTED WITH DRAFT STOP SYSTEM	CLASSROOM 216	3.8 A	15.00	208 V	1	1,083 CFM	365 CFM	ECM	0.00 in-wg	MEDIUM	0.33	39,274 Btu/h	33,398 Btu/h	81.9 °F	62.8 °F	54.0 °F	50.1 °F	4	2.0 GPM	68,955 Btu/h	38.5 °F	97.1 °F	2	0.82 gal	180 °F	111.0 °F	0.65	98"	21.78"	30.18"	600 lb	1,2	UVMS-26	DAIKIN JAVS9H15	FLOOR MOUNTED WITH DRAFT STOP SYSTEM	CLASSROOM 218	3.8 A	15.00	208 V	1	1,083 CFM	455 CFM	ECM	0.00 in-wg	MEDIUM	0.33	39,274 Btu/h	33,061 Btu/h	82.2 °F	62.7 °F	54.0 °F	50.1 °F	4	2.0 GPM	68,955 Btu/h	38.5 °F	97.1 °F	2	0.82 gal	180 °F	111.0 °F	0.65	98"	21.78"	30.18"	600 lb	1,2	UVMS-27	DAIKIN JAVS9H15	FLOOR MOUNTED WITH DRAFT STOP SYSTEM	CLASSROOM 220	3.8 A	15.00	208 V	1	1,083 CFM	455 CFM	ECM	0.00 in-wg	MEDIUM	0.33	39,274 Btu/h	33,061 Btu/h	82.2 °F	62.7 °F	54.0 °F	50.1 °F	4	2.0 GPM	68,955 Btu/h	38.5 °F	97.1 °F	2	0.82 gal	180 °F	111.0 °F	0.65	98"	21.78"	30.18"	600 lb	1,2	UVMS-28	DAIKIN JAVS9H15	FLOOR MOUNTED WITH DRAFT STOP SYSTEM	SCIENCE LAB 222	3.8 A	15.00	208 V	1	1,083 CFM	585 CFM	ECM	0.00 in-wg	MEDIUM	0.33	39,463 Btu/h	34,516 Btu/h	83.5 °F	62.6 °F	54.1 °F	48.6 °F	4	2.0 GPM	72,182 Btu/h	31.8 °F	93.3 °F	2	0.82 gal	180 °F	107.8 °F	0.65	98"	21.78"	30.18"	600 lb	1,2	UVMS-29	DAIKIN JAVS9H15	FLOOR MOUNTED WITH DRAFT STOP SYSTEM	SCIENCE LAB 224	3.8 A	15.00	208 V	1	1,083 CFM	510 CFM	ECM	0.00 in-wg	MEDIUM	0.33	39,287 Btu/h	33,722 Btu/h	82.8 °F	62.6 °F	54.1 °F	48.8 °F	4	2.0 GPM	70,603 Btu/h	35.1 °F	95.2 °F	2	0.82 gal	180 °F	109.4 °F	0.65	98"	21.78"	30.18"	600 lb	1,2	UVMS-30	DAIKIN JAVS9H15	FLOOR MOUNTED WITH DRAFT STOP SYSTEM	COMPUTER CLASSROOM 226	3.8 A	15.00	208 V	1	1,083 CFM	445 CFM	ECM	0.00 in-wg	MEDIUM	0.33	39,327 Btu/h	33,398 Btu/h	82.5 °F	62.7 °F	54.1 °F	48.8 °F	4	2.0 GPM	69,762 Btu/h	36.8 °F	96.2 °F	2	0.82 gal	180 °F	110.2 °F	0.65	98"	21.78"	30.18"	600 lb	1,2	UVMS-31	DAIKIN JAVS9H15	FLOOR MOUNTED WITH DRAFT STOP SYSTEM	SCIENCE LAB 228	3.8 A	15.00	208 V	1	1,083 CFM	545 CFM	ECM	0.00 in-wg	MEDIUM	0.33	39,388 Btu/h	34,176 Btu/h	83.2 °F	62.6 °F	54.1 °F	48.7 °F	4	2.0 GPM	71,410 Btu/h	33.1 °F	94.2 °F	2	0.82 gal	180 °F	108.6 °F	0.65	98"	21.78"	30.18"	600 lb	1,2	UVMS-32	DAIKIN JAVS9H15	FLOOR MOUNTED WITH DRAFT STOP SYSTEM	SCIENCE LAB 230	3.8 A	15.00	208 V	1	1,083 CFM	520 CFM	ECM	0.00 in-wg	MEDIUM	0.33	39,287 Btu/h	33,722 Btu/h	82.8 °F	62.6 °F	54.1 °F	48.8 °F	4</
Mark	BASIS OF DESIGN MFG. AND MODEL	TYPE	LOCATION	ELECTRICAL DATA				SUPPLY FAN DATA				VRV DX COOLING COIL				HOT WATER HEATING COIL				LENGTH					WIDTH	HEIGHT	WEIGHT	REMARKS																																																																																																																																																																																																																																																																																																																																																																																																																																																																																																																																																																																																																																																																																																																																																																																																																																																																																																																																																																																																																																																																																																																																																																																													
				MCA	MAX FUSE SIZE	VOLTS	PHASE	SUPPLY AIRFLOW	OUTSIDE AIRFLOW	FAN TYPE	Supply External Static Pressure	FAN SPEED	HP	CAPACITY TONNAGE	CAPACITY CAPS	EAT DB	EAT WB	LAT DB	LAT WB	COIL ROWS	Actual Heating Water Flow	CAPACITY	EAT	LAT	COIL ROWS	HEATING COIL VOLUME (GALLONS)	TEMPERATURE EWT	TEMPERATURE LWT	PRESSURE DROP (FEET)																																																																																																																																																																																																																																																																																																																																																																																																																																																																																																																																																																																																																																																																																																																																																																																																																																																																																																																																																																																																																																																																																																																																																																																												
UVMS-1	DAIKIN JAVS9H15	FLOOR MOUNTED	CLASSROOM 100B	3.8 A	15.00	208 V	1	1,083 CFM	360 CFM	ECM	0.00 in-wg	MEDIUM	0.33	38.287 Btu/h	31.321 Btu/h	80.9 °F	62.9 °F	54.2 °F	50.6 °F	4	2.0 GPM	65.728 Btu/h	45.1 °F	101.0 °F	2	0.82 gal	180 °F	114.3 °F	0.65	98"	21.78"	30.18"	600 lb	1,2																																																																																																																																																																																																																																																																																																																																																																																																																																																																																																																																																																																																																																																																																																																																																																																																																																																																																																																																																																																																																																																																																																																																																																																							
UVMS-2	DAIKIN JAVS9H15	FLOOR MOUNTED	CLASSROOM 100A	3.8 A	15.00	208 V	1	747 CFM	295 CFM	ECM	0.00 in-wg	HIGH	0.33	23.693 Btu/h	18.888 Btu/h	81.6 °F	62.8 °F	58.3 °F	51.9 °F	4	2.0 GPM	49.516 Btu/h	41.2 °F	102.3 °F	2	0.45 gal	180 °F	130.5 °F	1.21	62"	21.78"	30.18"	370 lb	1,2																																																																																																																																																																																																																																																																																																																																																																																																																																																																																																																																																																																																																																																																																																																																																																																																																																																																																																																																																																																																																																																																																																																																																																																							
UVMS-3	DAIKIN JAVF9H15	HORIZONTAL, SEMI-RECESSED, BOTTOM RETURN, REAR OUTSIDE AIR INLET, HORIZONTAL DUCTED DISCHARGE	CLASSROOM 102A	12.0 A	15.00	208 V	1	1,330 CFM	630 CFM	ECM	0.45 in-wg	MEDIUM	0.75	43,088 Btu/h	37,497 Btu/h	81.0 °F	62.9 °F	55.0 °F	51.7 °F	4	2.0 GPM	73,953 Btu/h	43.3 °F	95.5 °F	2	0.82 gal	180 °F	106.0 °F	0.65	98"	36"	16.58"	570 lb	1																																																																																																																																																																																																																																																																																																																																																																																																																																																																																																																																																																																																																																																																																																																																																																																																																																																																																																																																																																																																																																																																																																																																																																																							
UVMS-4	DAIKIN JAVS9H15	FLOOR MOUNTED	CLASSROOM 104	3.8 A	15.00	208 V	1	1,083 CFM	555 CFM	ECM	0.00 in-wg	MEDIUM	0.33	39,463 Btu/h	34,516 Btu/h	83.5 °F	62.6 °F	54.1 °F	48.6 °F	4	2.0 GPM	72,182 Btu/h	31.8 °F	93.3 °F	2	0.82 gal	180 °F	107.8 °F	0.65	98"	21.78"	30.18"	600 lb	1,2																																																																																																																																																																																																																																																																																																																																																																																																																																																																																																																																																																																																																																																																																																																																																																																																																																																																																																																																																																																																																																																																																																																																																																																							
UVMS-5	DAIKIN JAVS9H15	FLOOR MOUNTED	CLASSROOM 106	3.8 A	15.00	208 V	1	1,083 CFM	555 CFM	ECM	0.00 in-wg	MEDIUM	0.33	39,463 Btu/h	34,516 Btu/h	83.5 °F	62.6 °F	54.1 °F	48.6 °F	4	2.0 GPM	72,182 Btu/h	31.8 °F	93.3 °F	2	0.82 gal	180 °F	107.8 °F	0.65	98"	21.78"	30.18"	600 lb	1,2																																																																																																																																																																																																																																																																																																																																																																																																																																																																																																																																																																																																																																																																																																																																																																																																																																																																																																																																																																																																																																																																																																																																																																																							
UVMS-6	DAIKIN JAVS9H15	FLOOR MOUNTED WITH DRAFT STOP SYSTEM	SPECIAL ED CLASSROOM 112	3.8 A	15.00	208 V	1	1,083 CFM	495 CFM	ECM	0.00 in-wg	MEDIUM	0.33	39,327 Btu/h	33,398 Btu/h	82.5 °F	62.7 °F	54.1 °F	48.8 °F	4	2.0 GPM	69,762 Btu/h	36.8 °F	96.2 °F	2	0.82 gal	180 °F	110.2 °F	0.65	98"	21.78"	30.18"	600 lb	1,2																																																																																																																																																																																																																																																																																																																																																																																																																																																																																																																																																																																																																																																																																																																																																																																																																																																																																																																																																																																																																																																																																																																																																																																							
UVMS-7	DAIKIN JAVS9H15	FLOOR MOUNTED WITH DRAFT STOP SYSTEM	CLASSROOM 114	3.8 A	15.00	208 V	1	1,083 CFM	500 CFM	ECM	0.00 in-wg	MEDIUM	0.33	39,327 Btu/h	33,398 Btu/h	82.5 °F	62.7 °F	54.1 °F	48.8 °F	4	2.0 GPM	69,762 Btu/h	36.8 °F	96.2 °F	2	0.82 gal	180 °F	110.2 °F	0.65	98"	21.78"	30.18"	600 lb	1,2																																																																																																																																																																																																																																																																																																																																																																																																																																																																																																																																																																																																																																																																																																																																																																																																																																																																																																																																																																																																																																																																																																																																																																																							
UVMS-8	DAIKIN JAVS9H15	FLOOR MOUNTED WITH DRAFT STOP SYSTEM	CLASSROOM 114.5	3.8 A	15.00	208 V	1	1,083 CFM	540 CFM	ECM	0.00 in-wg	MEDIUM	0.33	39,388 Btu/h	34,176 Btu/h	82.2 °F	62.8 °F	54.0 °F	48.7 °F	4	2.0 GPM	71,410 Btu/h	33.1 °F	94.2 °F	2	0.82 gal	180 °F	108.6 °F	0.65	98"	21.78"	30.18"	600 lb	1,2																																																																																																																																																																																																																																																																																																																																																																																																																																																																																																																																																																																																																																																																																																																																																																																																																																																																																																																																																																																																																																																																																																																																																																																							
UVMS-9	DAIKIN JAVS9H15	FLOOR MOUNTED WITH DRAFT STOP SYSTEM	CLASSROOM 122	3.8 A	15.00	208 V	1	1,083 CFM	460 CFM	ECM	0.00 in-wg	MEDIUM	0.33	39,274 Btu/h	33,061 Btu/h	82.2 °F	62.7 °F	54.0 °F	50.1 °F	4	2.0 GPM	68,955 Btu/h	38.5 °F	97.1 °F	2	0.82 gal	180 °F	111.0 °F	0.65	98"	21.78"	30.18"	600 lb	1,2																																																																																																																																																																																																																																																																																																																																																																																																																																																																																																																																																																																																																																																																																																																																																																																																																																																																																																																																																																																																																																																																																																																																																																																							
UVMS-10	DAIKIN JAVS9H15	FLOOR MOUNTED WITH DRAFT STOP SYSTEM	CLASSROOM 124	3.8 A	15.00	208 V	1	1,083 CFM	460 CFM	ECM	0.00 in-wg	MEDIUM	0.33	39,274 Btu/h	33,061 Btu/h	82.2 °F	62.7 °F	54.0 °F	50.1 °F	4	2.0 GPM	68,955 Btu/h	38.5 °F	97.1 °F	2	0.82 gal	180 °F	111.0 °F	0.65	98"	21.78"	30.18"	600 lb	1,2																																																																																																																																																																																																																																																																																																																																																																																																																																																																																																																																																																																																																																																																																																																																																																																																																																																																																																																																																																																																																																																																																																																																																																																							
UVMS-11	DAIKIN JAVS9H15	FLOOR MOUNTED WITH DRAFT STOP SYSTEM	CLASSROOM 126	3.8 A	15.00	208 V	1	1,083 CFM	475 CFM	ECM	0.00 in-wg	MEDIUM	0.33	39,274 Btu/h	33,061 Btu/h	82.2 °F	62.7 °F	54.0 °F	50.1 °F	4	2.0 GPM	68,955 Btu/h	38.5 °F	97.1 °F	2	0.82 gal	180 °F	111.0 °F	0.65	98"	21.78"	30.18"	600 lb	1,2																																																																																																																																																																																																																																																																																																																																																																																																																																																																																																																																																																																																																																																																																																																																																																																																																																																																																																																																																																																																																																																																																																																																																																																							
UVMS-12	DAIKIN JAVS9H15	FLOOR MOUNTED WITH DRAFT STOP SYSTEM	CLASSROOM 128	3.8 A	15.00	208 V	1	1,083 CFM	430 CFM	ECM	0.00 in-wg	MEDIUM	0.33	39,274 Btu/h	32,715 Btu/h	81.9 °F	62.8 °F	54.0 °F	50.1 °F	4	2.0 GPM	68,183 Btu/h	40.0 °F	98.1 °F	2	0.82 gal	180 °F	111.8 °F	0.65	98"	21.78"	30.18"	600 lb	1,2																																																																																																																																																																																																																																																																																																																																																																																																																																																																																																																																																																																																																																																																																																																																																																																																																																																																																																																																																																																																																																																																																																																																																																																							
UVMS-13	DAIKIN JAVS9H15	FLOOR MOUNTED WITH DRAFT STOP SYSTEM	CLASSROOM 200	3.8 A	15.00	208 V	1	1,083 CFM	435 CFM	ECM	0.00 in-wg	MEDIUM	0.33	39,274 Btu/h	32,715 Btu/h	81.9 °F	62.8 °F	54.0 °F	50.1 °F	4	2.0 GPM	68,183 Btu/h	40.0 °F	98.1 °F	2	0.82 gal	180 °F	111.8 °F	0.65	98"	21.78"	30.18"	600 lb	1,2																																																																																																																																																																																																																																																																																																																																																																																																																																																																																																																																																																																																																																																																																																																																																																																																																																																																																																																																																																																																																																																																																																																																																																																							
UVMS-14	DAIKIN JAVS9H15	FLOOR MOUNTED WITH DRAFT STOP SYSTEM	CLASSROOM 202	3.8 A	15.00	208 V	1	1,083 CFM	435 CFM	ECM	0.00 in-wg	MEDIUM	0.33	39,274 Btu/h	32,715 Btu/h	81.9 °F	62.8 °F	54.0 °F	50.1 °F	4	2.0 GPM	68,183 Btu/h	40.0 °F	98.1 °F	2	0.82 gal	180 °F	111.8 °F	0.65	98"	21.78"	30.18"	600 lb	1,2																																																																																																																																																																																																																																																																																																																																																																																																																																																																																																																																																																																																																																																																																																																																																																																																																																																																																																																																																																																																																																																																																																																																																																																							
UVMS-15	DAIKIN JAVS9H15	FLOOR MOUNTED WITH DRAFT STOP SYSTEM	CLASSROOM 203	3.8 A	15.00	208 V	1	1,083 CFM	480 CFM	ECM	0.00 in-wg	MEDIUM	0.33	39,327 Btu/h	33,398 Btu/h	82.5 °F	62.7 °F	54.1 °F	48.8 °F	4	2.0 GPM	69,762 Btu/h	36.8 °F	96.2 °F	2	0.82 gal	180 °F	110.2 °F	0.65	98"	21.78"	30.18"	600 lb	1,2																																																																																																																																																																																																																																																																																																																																																																																																																																																																																																																																																																																																																																																																																																																																																																																																																																																																																																																																																																																																																																																																																																																																																																																							
UVMS-16	DAIKIN JAVS9H15	FLOOR MOUNTED WITH DRAFT STOP SYSTEM	CLASSROOM 204	3.8 A	15.00	208 V	1	1,083 CFM	440 CFM	ECM	0.00 in-wg	MEDIUM	0.33	39,274 Btu/h	33,061 Btu/h	82.2 °F	62.7 °F	54.0 °F	50.1 °F	4	2.0 GPM	68,955 Btu/h	38.5 °F	97.1 °F	2	0.82 gal	180 °F	111.0 °F	0.65	98"	21.78"	30.18"	600 lb	1,2																																																																																																																																																																																																																																																																																																																																																																																																																																																																																																																																																																																																																																																																																																																																																																																																																																																																																																																																																																																																																																																																																																																																																																																							
UVMS-17	DAIKIN JAVS9H15	FLOOR MOUNTED WITH DRAFT STOP SYSTEM	CLASSROOM 205	3.8 A	15.00	208 V	1	1,083 CFM	480 CFM	ECM	0.00 in-wg	MEDIUM	0.33	39,327 Btu/h	33,398 Btu/h	82.5 °F	62.7 °F	54.1 °F	48.8 °F	4	2.0 GPM	69,762 Btu/h	36.8 °F	96.2 °F	2	0.82 gal	180 °F	110.2 °F	0.65	98"	21.78"	30.18"	600 lb	1,2																																																																																																																																																																																																																																																																																																																																																																																																																																																																																																																																																																																																																																																																																																																																																																																																																																																																																																																																																																																																																																																																																																																																																																																							
UVMS-18	DAIKIN JAVS9H15	FLOOR MOUNTED WITH DRAFT STOP SYSTEM	CLASSROOM 206	3.8 A	15.00	208 V	1	1,083 CFM	435 CFM	ECM	0.00 in-wg	MEDIUM	0.33	39,274 Btu/h	32,715 Btu/h	81.9 °F	62.8 °F	54.0 °F	50.1 °F	4	2.0 GPM	68,183 Btu/h	40.0 °F	98.1 °F	2	0.82 gal	180 °F	111.8 °F	0.65	98"	21.78"	30.18"	600 lb	1,2																																																																																																																																																																																																																																																																																																																																																																																																																																																																																																																																																																																																																																																																																																																																																																																																																																																																																																																																																																																																																																																																																																																																																																																							
UVMS-19	DAIKIN JAVS9H15	FLOOR MOUNTED WITH DRAFT STOP SYSTEM	CLASSROOM 207	3.8 A	15.00	208 V	1	1,083 CFM	485 CFM	ECM	0.00 in-wg	MEDIUM	0.33	39,327 Btu/h	33,398 Btu/h	82.5 °F	62.7 °F	54.1 °F	48.8 °F	4	2.0 GPM	69,762 Btu/h	36.8 °F	96.2 °F	2	0.82 gal	180 °F	110.2 °F	0.65	98"	21.78"	30.18"	600 lb	1,2																																																																																																																																																																																																																																																																																																																																																																																																																																																																																																																																																																																																																																																																																																																																																																																																																																																																																																																																																																																																																																																																																																																																																																																							
UVMS-20	DAIKIN JAVS9H15	FLOOR MOUNTED WITH DRAFT STOP SYSTEM	CLASSROOM 207	3.8 A	15.00	208 V	1	1,083 CFM	485 CFM	ECM	0.00 in-wg	MEDIUM	0.33	39,327 Btu/h	33,398 Btu/h	82.5 °F	62.7 °F	54.1 °F	48.8 °F	4	2.0 GPM	69,762 Btu/h	36.8 °F	96.2 °F	2	0.82 gal	180 °F	110.2 °F	0.65	98"	21.78"	30.18"	600 lb	1,2																																																																																																																																																																																																																																																																																																																																																																																																																																																																																																																																																																																																																																																																																																																																																																																																																																																																																																																																																																																																																																																																																																																																																																																							
UVMS-21	DAIKIN JAVS9H15	FLOOR MOUNTED WITH DRAFT STOP SYSTEM	CLASSROOM 208	3.8 A	15.00	208 V	1	1,083 CFM	435 CFM	ECM	0.00 in-wg	MEDIUM	0.33	39,274 Btu/h	32,715 Btu/h	81.9 °F	62.8 °F	54.0 °F	50.1 °F	4	2.0 GPM	68,183 Btu/h	40.0 °F	98.1 °F	2	0.82 gal	180 °F	111.8 °F	0.65	98"	21.78"	30.18"	600 lb	1,2																																																																																																																																																																																																																																																																																																																																																																																																																																																																																																																																																																																																																																																																																																																																																																																																																																																																																																																																																																																																																																																																																																																																																																																							
UVMS-22	DAIKIN JAVS9H15	FLOOR MOUNTED WITH DRAFT STOP SYSTEM	CLASSROOM 210	3.8 A	15.00	208 V	1	1,083 CFM	445 CFM	ECM	0.00 in-wg	MEDIUM	0.33	39,274 Btu/h	32,715 Btu/h	81.9 °F	62.8 °F	54.0 °F	50.1 °F	4	2.0 GPM	68,183 Btu/h	40.0 °F	98.1 °F	2	0.82 gal	180 °F	111.8 °F	0.65	98"	21.78"	30.18"	600 lb	1,2																																																																																																																																																																																																																																																																																																																																																																																																																																																																																																																																																																																																																																																																																																																																																																																																																																																																																																																																																																																																																																																																																																																																																																																							
UVMS-23	DAIKIN JAVS9H15	FLOOR MOUNTED WITH DRAFT STOP SYSTEM	CLASSROOM 212	3.8 A	15.00	208 V	1	1,083 CFM	485 CFM	ECM	0.00 in-wg	MEDIUM	0.33	39,327 Btu/h	33,398 Btu/h	82.5 °F	62.7 °F	54.1 °F	48.8 °F	4	2.0 GPM	69,762 Btu/h	36.8 °F	96.2 °F	2	0.82 gal	180 °F	110.2 °F	0.65	98"	21.78"	30.18"	600 lb	1,2																																																																																																																																																																																																																																																																																																																																																																																																																																																																																																																																																																																																																																																																																																																																																																																																																																																																																																																																																																																																																																																																																																																																																																																							
UVMS-24	DAIKIN JAVS9H15	FLOOR MOUNTED WITH DRAFT STOP SYSTEM	CLASSROOM 214	3.8 A	15.00	208 V	1	1,083 CFM	360 CFM	ECM	0.00 in-wg	MEDIUM	0.33	39,287 Btu/h	31,321 Btu/h	80.9 °F	62.9 °F	54.2 °F	50.6 °F	4	2.0 GPM	65,728 Btu/h	45.1 °F	101.0 °F	2	0.82 gal	180 °F	114.3 °F	0.65	98"	21.78"	30.18"	600 lb	1,2																																																																																																																																																																																																																																																																																																																																																																																																																																																																																																																																																																																																																																																																																																																																																																																																																																																																																																																																																																																																																																																																																																																																																																																							
UVMS-25	DAIKIN JAVS9H15	FLOOR MOUNTED WITH DRAFT STOP SYSTEM	CLASSROOM 216	3.8 A	15.00	208 V	1	1,083 CFM	365 CFM	ECM	0.00 in-wg	MEDIUM	0.33	39,274 Btu/h	33,398 Btu/h	81.9 °F	62.8 °F	54.0 °F	50.1 °F	4	2.0 GPM	68,955 Btu/h	38.5 °F	97.1 °F	2	0.82 gal	180 °F	111.0 °F	0.65	98"	21.78"	30.18"	600 lb	1,2																																																																																																																																																																																																																																																																																																																																																																																																																																																																																																																																																																																																																																																																																																																																																																																																																																																																																																																																																																																																																																																																																																																																																																																							
UVMS-26	DAIKIN JAVS9H15	FLOOR MOUNTED WITH DRAFT STOP SYSTEM	CLASSROOM 218	3.8 A	15.00	208 V	1	1,083 CFM	455 CFM	ECM	0.00 in-wg	MEDIUM	0.33	39,274 Btu/h	33,061 Btu/h	82.2 °F	62.7 °F	54.0 °F	50.1 °F	4	2.0 GPM	68,955 Btu/h	38.5 °F	97.1 °F	2	0.82 gal	180 °F	111.0 °F	0.65	98"	21.78"	30.18"	600 lb	1,2																																																																																																																																																																																																																																																																																																																																																																																																																																																																																																																																																																																																																																																																																																																																																																																																																																																																																																																																																																																																																																																																																																																																																																																							
UVMS-27	DAIKIN JAVS9H15	FLOOR MOUNTED WITH DRAFT STOP SYSTEM	CLASSROOM 220	3.8 A	15.00	208 V	1	1,083 CFM	455 CFM	ECM	0.00 in-wg	MEDIUM	0.33	39,274 Btu/h	33,061 Btu/h	82.2 °F	62.7 °F	54.0 °F	50.1 °F	4	2.0 GPM	68,955 Btu/h	38.5 °F	97.1 °F	2	0.82 gal	180 °F	111.0 °F	0.65	98"	21.78"	30.18"	600 lb	1,2																																																																																																																																																																																																																																																																																																																																																																																																																																																																																																																																																																																																																																																																																																																																																																																																																																																																																																																																																																																																																																																																																																																																																																																							
UVMS-28	DAIKIN JAVS9H15	FLOOR MOUNTED WITH DRAFT STOP SYSTEM	SCIENCE LAB 222	3.8 A	15.00	208 V	1	1,083 CFM	585 CFM	ECM	0.00 in-wg	MEDIUM	0.33	39,463 Btu/h	34,516 Btu/h	83.5 °F	62.6 °F	54.1 °F	48.6 °F	4	2.0 GPM	72,182 Btu/h	31.8 °F	93.3 °F	2	0.82 gal	180 °F	107.8 °F	0.65	98"	21.78"	30.18"	600 lb	1,2																																																																																																																																																																																																																																																																																																																																																																																																																																																																																																																																																																																																																																																																																																																																																																																																																																																																																																																																																																																																																																																																																																																																																																																							
UVMS-29	DAIKIN JAVS9H15	FLOOR MOUNTED WITH DRAFT STOP SYSTEM	SCIENCE LAB 224	3.8 A	15.00	208 V	1	1,083 CFM	510 CFM	ECM	0.00 in-wg	MEDIUM	0.33	39,287 Btu/h	33,722 Btu/h	82.8 °F	62.6 °F	54.1 °F	48.8 °F	4	2.0 GPM	70,603 Btu/h	35.1 °F	95.2 °F	2	0.82 gal	180 °F	109.4 °F	0.65	98"	21.78"	30.18"	600 lb	1,2																																																																																																																																																																																																																																																																																																																																																																																																																																																																																																																																																																																																																																																																																																																																																																																																																																																																																																																																																																																																																																																																																																																																																																																							
UVMS-30	DAIKIN JAVS9H15	FLOOR MOUNTED WITH DRAFT STOP SYSTEM	COMPUTER CLASSROOM 226	3.8 A	15.00	208 V	1	1,083 CFM	445 CFM	ECM	0.00 in-wg	MEDIUM	0.33	39,327 Btu/h	33,398 Btu/h	82.5 °F	62.7 °F	54.1 °F	48.8 °F	4	2.0 GPM	69,762 Btu/h	36.8 °F	96.2 °F	2	0.82 gal	180 °F	110.2 °F	0.65	98"	21.78"	30.18"	600 lb	1,2																																																																																																																																																																																																																																																																																																																																																																																																																																																																																																																																																																																																																																																																																																																																																																																																																																																																																																																																																																																																																																																																																																																																																																																							
UVMS-31	DAIKIN JAVS9H15	FLOOR MOUNTED WITH DRAFT STOP SYSTEM	SCIENCE LAB 228	3.8 A	15.00	208 V	1	1,083 CFM	545 CFM	ECM	0.00 in-wg	MEDIUM	0.33	39,388 Btu/h	34,176 Btu/h	83.2 °F	62.6 °F	54.1 °F	48.7 °F	4	2.0 GPM	71,410 Btu/h	33.1 °F	94.2 °F	2	0.82 gal	180 °F	108.6 °F	0.65	98"	21.78"	30.18"	600 lb	1,2																																																																																																																																																																																																																																																																																																																																																																																																																																																																																																																																																																																																																																																																																																																																																																																																																																																																																																																																																																																																																																																																																																																																																																																							
UVMS-32	DAIKIN JAVS9H15	FLOOR MOUNTED WITH DRAFT STOP SYSTEM	SCIENCE LAB 230	3.8 A	15.00	208 V	1	1,083 CFM	520 CFM	ECM	0.00 in-wg	MEDIUM	0.33	39,287 Btu/h	33,722 Btu/h	82.8 °F	62.6 °F	54.1 °F	48.8 °F	4</																																																																																																																																																																																																																																																																																																																																																																																																																																																																																																																																																																																																																																																																																																																																																																																																																																																																																																																																																																																																																																																																																																																																																																																																					



ISSUE FOR BID SET


$$1/16" = 1'-0"$$

SSUE FOR BID SE-





C16

- ① DISCONNECT AND REMOVE FLOOR MOUNTED UNIT VENTILATOR AT LOCATION SHOWN. DISCONNECT OUTSIDE AIR DUCT SLEEVE FROM REMOVED UNIT VENTILATOR AND MAINTAIN OUTSIDE AIR DUCT SLEEVE CONNECTED TO EXTERIOR OUTSIDE AIR LOUVER. DISCONNECT AND REMOVE HWS/HWR BRANCH PIPING AT DISSECTION POINT. DISCONNECT AND REMOVE HWS/HWR PIPING ROUTED WITHIN HORIZONTAL ENCLOSURE SYSTEMS TO RISER. PNEUMATIC UNIT VENTILATOR CONTROL WIRING, DDC CONTROLLER, SENSORS, RELAYS, GRAPHICS, PROGRAMMING, SEQUENCES OF OPERATIONS AND ASSOCIATED CONTROL DEVICES.
- ② DISCONNECT AND REMOVE SPACE TEMPERATURE SENSOR AT LOCATION SHOWN. DISCONNECT AND REMOVE DDC PROGRAMMING FROM REMOVED UNIT VENTILATOR IN SPACE. REMOVE CONTROL WIRING BETWEEN UNIT VENTILATOR DDC CONTROLLER AND SPACE SENSOR.
- ③ DISCONNECT AND REMOVE PERIMETER SHELVE/CABINET UNITS AT LOCATION SHOWN AND FIN TUBE RADIATION LOCATED WITHIN PIPING TUNNEL AT REAR OF SHELVE SYSTEM.
- ④ DISCONNECT AND REMOVE HORIZONTAL PIPING ENCLOSURE UNITS AT LOCATIONS SHOWN INCLUDING ASSOCIATED FIN TUBE RADIATION WITHIN THE PIPING ENCLOSURE SYSTEM. DISCONNECT AND REMOVE HWS/HWR BRANCH PIPING WITHIN FIN TUBE ENCLOSURE SYSTEM BACK TO DISSECTION POINT ON TUNNEL. DISCONNECT AND REMOVE HWS TO BOTTOM OF RISER ROUTED TO FLOOR LEVEL AND CAP AT DISSECTION POINT.
- ⑤ DISCONNECT AND REMOVE FLOOR MOUNTED UNIT VENTILATOR AT LOCATION SHOWN. DISCONNECT OUTSIDE AIR DUCT SLEEVE FROM REMOVED UNIT VENTILATOR AND MAINTAIN OUTSIDE AIR DUCT SLEEVE CONNECTED TO EXTERIOR OUTSIDE AIR LOUVER. DISCONNECT AND REMOVE HWS/HWR BRANCH PIPING TO REMOVED UNIT VENTILATOR HEATING COIL. DISCONNECT AND REMOVE HEATING COIL CONTROL VALVE, DAMPERS AND ALL ASSOCIATED UNIT VENTILATOR CONTROL WIRING, DDC CONTROLLER, SENSORS, RELAYS, GRAPHICS, PROGRAMMING, SEQUENCES OF OPERATIONS AND ASSOCIATED CONTROL DEVICES.
- ⑥ DISCONNECT AND REMOVE AIR HANDLING UNIT S-4 PNEUMATIC OPERATOR DIAL AT LOCATION SHOWN INCLUDING ASSOCIATED PNEUMATIC TUBING. REMOVE PNEUMATIC TUBING BACK TO PNEUMATIC PIPING MAIN AND CAP. PROVIDE STAINLESS STEEL COVER PLATE OVER LOCATION OF REMOVED PNEUMATIC OPERATOR DIAL.
- ⑦ DISCONNECT AND REMOVE PNEUMATIC CONTROL PANEL INCLUDING ALL PNEUMATIC ON/OFF SWITCHES AND PNEUMATIC OPERATOR DIALS FROM REMOVED PNEUMATIC CONTROLS SERVING EXHAUST FANS AND AIR HANDLING UNIT S-1. REMOVE PNEUMATIC TUBING FROM CONTROL PANEL BACK TO ASSOCIATED PNEUMATIC MAIN AND CAP. REMOVE LINE VOLTAGE POWER FROM REMOVED PANEL BACK TO ASSOCIATED PANELBOARD. REMOVE ALL LOW VOLTAGE CONTROL WIRING FROM PANEL BACK TO ASSOCIATED SOURCE.
- ⑧ DISCONNECT AND REMOVE TWO PNEUMATIC THERMOSTATS AT LOCATIONS SHOWN. REMOVE PNEUMATIC TUBING BACK TO PNEUMATIC PIPING MAIN AND CAP. PROVIDE STAINLESS STEEL COVER PLATE OVER LOCATION OF ONE THERMOSTAT AND REUSE SECOND LOCATION FOR REPLACEMENT SPACE TEMPERATURE SENSOR AS SHOWN ON DRAWING MS-112.
- ⑨ DISCONNECT AND REMOVE GREASE HODD EXHAUST FAN E-3 PNEUMATIC OPERATOR DIAL AT LOCATION SHOWN INCLUDING ASSOCIATED PNEUMATIC TUBING. REMOVE PNEUMATIC TUBING BACK TO PNEUMATIC PIPING MAIN AND CAP. PROVIDE STAINLESS STEEL COVER PLATE OVER LOCATION OF REMOVED PNEUMATIC OPERATOR DIAL.
- ⑩ DISCONNECT AND REMOVE HORIZONTAL PIPING ENCLOSURE UNITS AT LOCATIONS SHOWN INCLUDING ASSOCIATED HWS/HWR BRANCH PIPING WITHIN FIN TUBE ENCLOSURE SYSTEM BETWEEN DISSECTION POINTS SHOWN. DISCONNECT AND REMOVE HWR PIPING TO BOTTOM OF RISER TO FLOOR LEVEL AND CAP AT DISSECTION POINT. DISCONNECT AND REMOVE HWS PIPING ROUTED WITHIN HORIZONTAL ENCLOSURE SYSTEMS TO RISER. PNEUMATIC UNIT VENTILATOR BETWEEN STORAGE 123 AND CLASSROOM 114, AND CAP HWS PIPING AT TUNNEL PENETRATION.
- ⑪ DISCONNECT AND REMOVE 1" HWSR PIPING TO BOTTOM OF HWS RISERS AND CAP AT DISSECTION POINTS SHOWN.
- ⑫ DISCONNECT AND REMOVE HWS BRANCH PIPING TO DISSECTION POINT SHOWN JUST UPSTREAM OF PENETRATION INTO VERTICAL PIPING CHASE.
- ⑬ DISCONNECT AND REMOVE HWR BRANCH PIPING TO DISSECTION POINT SHOWN JUST UPSTREAM OF PENETRATION INTO VERTICAL PIPING CHASE.

BM-M105

ISSUE FOR BID SET



- ARCHITECT**
qsqdesign
145 W 43rd Street
New York, NY 10018
440.435.0660 office
440.435.0661 cell
www.qsqdesign.com
- OWNER**
Manuel Union Free School District
103 Church St.
Manuel, NY 10954
145.627.9880 office
<http://www.manuelsd.org/>
- Structural Engineer**
Clapper Structural Engineering
60 Partition Street
Saugerties, NY 12477
445.943.9601
www.clapperstructural.com
- EP Engineer**
Sage Engineering Associates, LLP
100 Columbia Circle
Manlius, NY 12093
445.483.6091 office
445.483.6092 fax
www.sageep.com
- Environmental Engineer**
Quest Environmental Solutions
376 Route 9
Wappingers Falls, NY 12590
445.298.6251
www.qualityenv.com
- Construction Manager**
Jacobs
One Penn Plaza
44th Floor, Suite 5420
New York, NY 10119
212.646.9850
www.jacobs.com



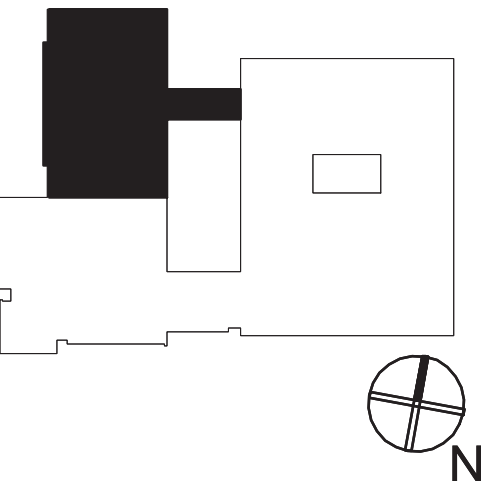
NUFSD
BOND
PROJECTS
PH3

SED#50-01-08-03-0-003-035 (HIGH SCHOOL)
SED#50-01-08-03-0-004-020 (BARR MIDDLE SCHOOL)

High School
103 Church St.
Danuet, NY 10954

Garr Middle School
50 Blauvelt Rd #1
Manuet, NY 10954

KEY PLAN

[illegible]

ISSUED: BID SET ISSUANCE

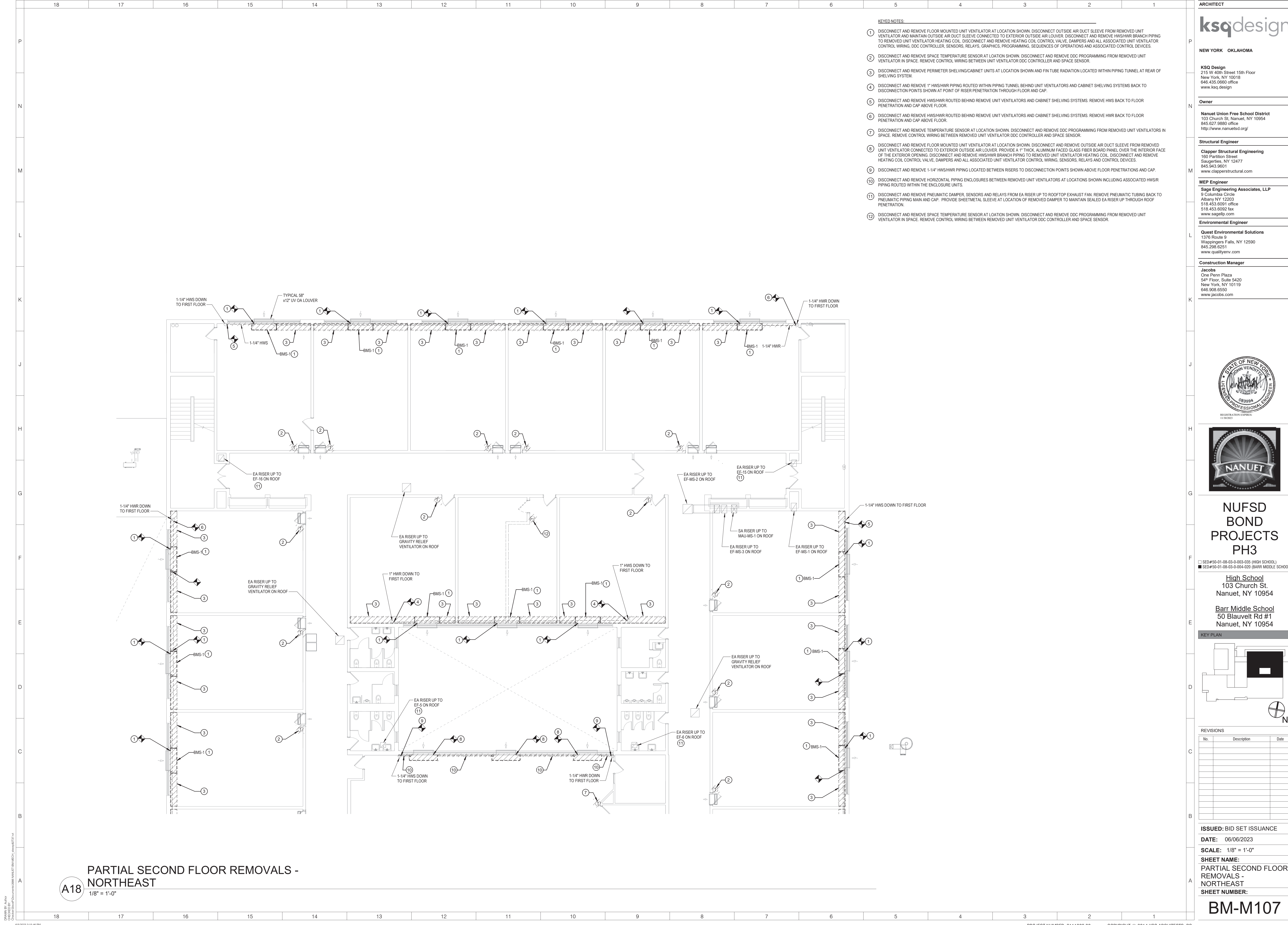
DATE: 06/06/2023

SCALE: 1/8" = 1'-0"

SHEET NAME:
PARTIAL FIRST FLOOR
REMOVALS -
NORTHWEST

BM-M106

ISSUE FOR BID SET



KEYED NOTES:

1. DISCONNECT AND REMOVE FLOOR MOUNTED UNIT VENTILATOR AT LOCATION SHOWN. DISCONNECT OUTSIDE AIR DUCT SLEEVE FROM REMOVED UNIT VENTILATOR AND MAINTAIN OUTSIDE AIR DUCT SLEEVE CONNECTED TO EXTERIOR OUTSIDE AIR LOUVER. DISCONNECT AND REMOVE HWS/HWR BRANCH PIPING TO REMOVED UNIT VENTILATOR HEATING COIL. DISCONNECT AND REMOVE HEATING COIL CONTROL VALVE, DAMPERS AND ALL ASSOCIATED UNIT VENTILATOR CONTROL WIRING, DDC CONTROLLER, SENSORS, RELAYS, GRAPHICS, PROGRAMMING, SEQUENCES OF OPERATIONS AND ASSOCIATED CONTROL DEVICES.
2. DISCONNECT AND REMOVE SPACE TEMPERATURE SENSOR AT LOCATION SHOWN. DISCONNECT AND REMOVE DDC PROGRAMMING FROM REMOVED UNIT VENTILATOR IN SPACE. REMOVE CONTROL WIRING BETWEEN UNIT VENTILATOR DDC CONTROLLER AND SPACE SENSOR.
3. DISCONNECT AND REMOVE PERIMETER SHELVING/CABINET UNITS AT LOCATION SHOWN AND FIN TUBE RADIATION LOCATED WITHIN PIPING TUNNEL AT REAR OF SHELVING SYSTEM.
4. DISCONNECT AND REMOVE 1" HWS/HWR PIPING ROUTED WITHIN PIPING TUNNEL BEHIND UNIT VENTILATORS AND CABINET SHELVING SYSTEMS BACK TO DISCONNECTION POINTS SHOWN AT POINT OF RISER PENETRATION THROUGH FLOOR AND CAP.
5. DISCONNECT AND REMOVE HWS/HWR ROUTED BEHIND REMOVE UNIT VENTILATORS AND CABINET SHELVING SYSTEMS. REMOVE HWS BACK TO FLOOR PENETRATION AND CAP ABOVE FLOOR.
6. DISCONNECT AND REMOVE HWS/HWR ROUTED BEHIND REMOVE UNIT VENTILATORS AND CABINET SHELVING SYSTEMS. REMOVE HWR BACK TO FLOOR PENETRATION AND CAP ABOVE FLOOR.
7. DISCONNECT AND REMOVE TEMPERATURE SENSOR AT LOCATION SHOWN. DISCONNECT AND REMOVE DDC PROGRAMMING FROM REMOVED UNIT VENTILATORS IN SPACE. REMOVE CONTROL WIRING BETWEEN REMOVED UNIT VENTILATOR DDC CONTROLLER AND SPACE SENSOR.
8. DISCONNECT AND REMOVE FLOOR MOUNTED UNIT VENTILATOR AT LOCATION SHOWN. DISCONNECT AND REMOVE OUTSIDE AIR DUCT SLEEVE FROM REMOVED UNIT VENTILATOR CONNECTED TO EXTERIOR OUTSIDE AIR LOUVER. PROVIDE A 1" THICK ALUMINUM FACED GLASS FIBER BOARD PANEL OVER THE INTERIOR FACE OF THE EXTERIOR OPENING. DISCONNECT AND REMOVE HWS/HWR BRANCH PIPING TO REMOVED UNIT VENTILATOR HEATING COIL. DISCONNECT AND REMOVE HEATING COIL CONTROL VALVE, DAMPERS AND ALL ASSOCIATED UNIT VENTILATOR CONTROL WIRING, SENSORS, RELAYS AND CONTROL DEVICES.
9. DISCONNECT AND REMOVE 1-1/4" HWS/HWR PIPING LOCATED BETWEEN RISERS TO DISCONNECTION POINTS SHOWN ABOVE FLOOR PENETRATIONS AND CAP.
10. DISCONNECT AND REMOVE HORIZONTAL PIPING ENCLOSURES BETWEEN REMOVED UNIT VENTILATORS AT LOCATIONS SHOWN INCLUDING ASSOCIATED HWS/R PIPING ROUTED WITHIN THE ENCLOSURE UNITS.
11. DISCONNECT AND REMOVE PNEUMATIC DAMPER, SENSORS AND RELAYS FROM EA RISER UP TO ROOFTOP EXHAUST FAN. REMOVE PNEUMATIC TUBING BACK TO PNEUMATIC PIPING MAIN AND CAP. PROVIDE SHEETMETAL SLEEVE AT LOCATION OF REMOVED DAMPER TO MAINTAIN SEALED EA RISER UP THROUGH ROOF PENETRATION.
12. DISCONNECT AND REMOVE SPACE TEMPERATURE SENSOR AT LOCATION SHOWN. DISCONNECT AND REMOVE DDC PROGRAMMING FROM REMOVED UNIT VENTILATOR IN SPACE. REMOVE CONTROL WIRING BETWEEN REMOVED UNIT VENTILATOR DDC CONTROLLER AND SPACE SENSOR.

ARCHITECT

ksqdesign

NEW YORK OKLAHOMA

KSQ Design
215 W 40th Street 15th Floor
New York, NY 10018
646.435.0660 office
www.ksq.design

Owner

Nanuet Union Free School District
103 Church St. Nanuet, NY 10954
845.627.9880 office
http://www.nanuetisd.org/

Structural Engineer

Clapper Structural Engineering
160 Partition Street
Saugerties, NY 12477
845.943.9801
www.clappersstructural.com

MEP Engineer

Sage Engineering Associates, LLP
9 Columbia Circle
Albany NY 12203
518.453.6991 office
518.453.6992 fax
www.sageellp.com

Environmental Engineer

Quest Environmental Solutions
1376 Route 9
Wappingers Falls, NY 12590
845.298.6251
www.qualityenv.com

Construction Manager

Jacobs
One Penn Plaza
54th Floor, Suite 5420
New York, NY 10119
646.906.6550
www.jacobs.com



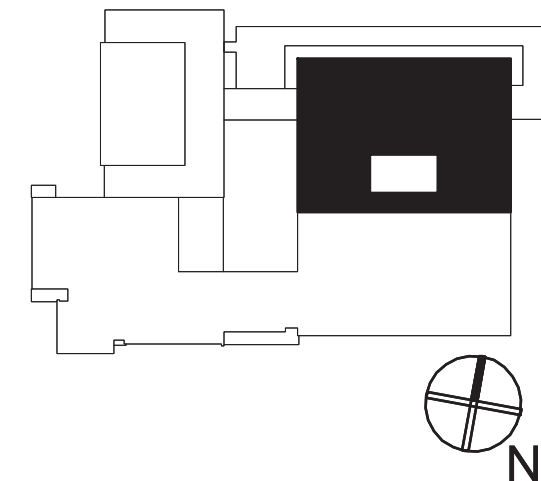
**NUFSD
BOND
PROJECTS
PH3**

SED#50-01-08-03-0-003-035 (HIGH SCHOOL)
SED#50-01-08-03-0-004-020 (BARR MIDDLE SCHOOL)

High School
103 Church St.
Nanuet, NY 10954

Barr Middle School
50 Blauvelt Rd #1
Nanuet, NY 10954

KEY PLAN



REVISIONS

No.	Description	Date

ISSUED: BID SET ISSUANCE

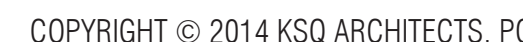
DATE: 06/06/2023

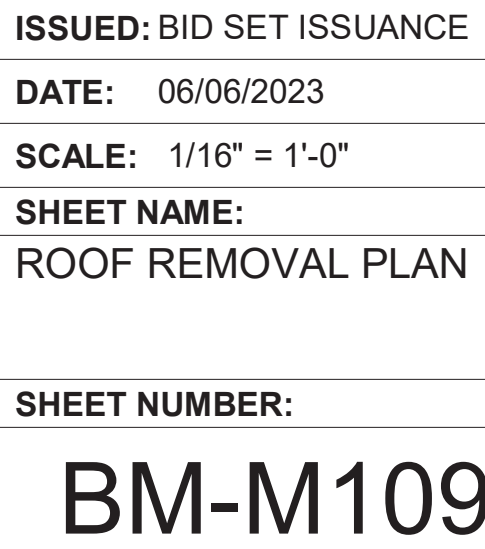
SCALE: 1/8" = 1'-0"

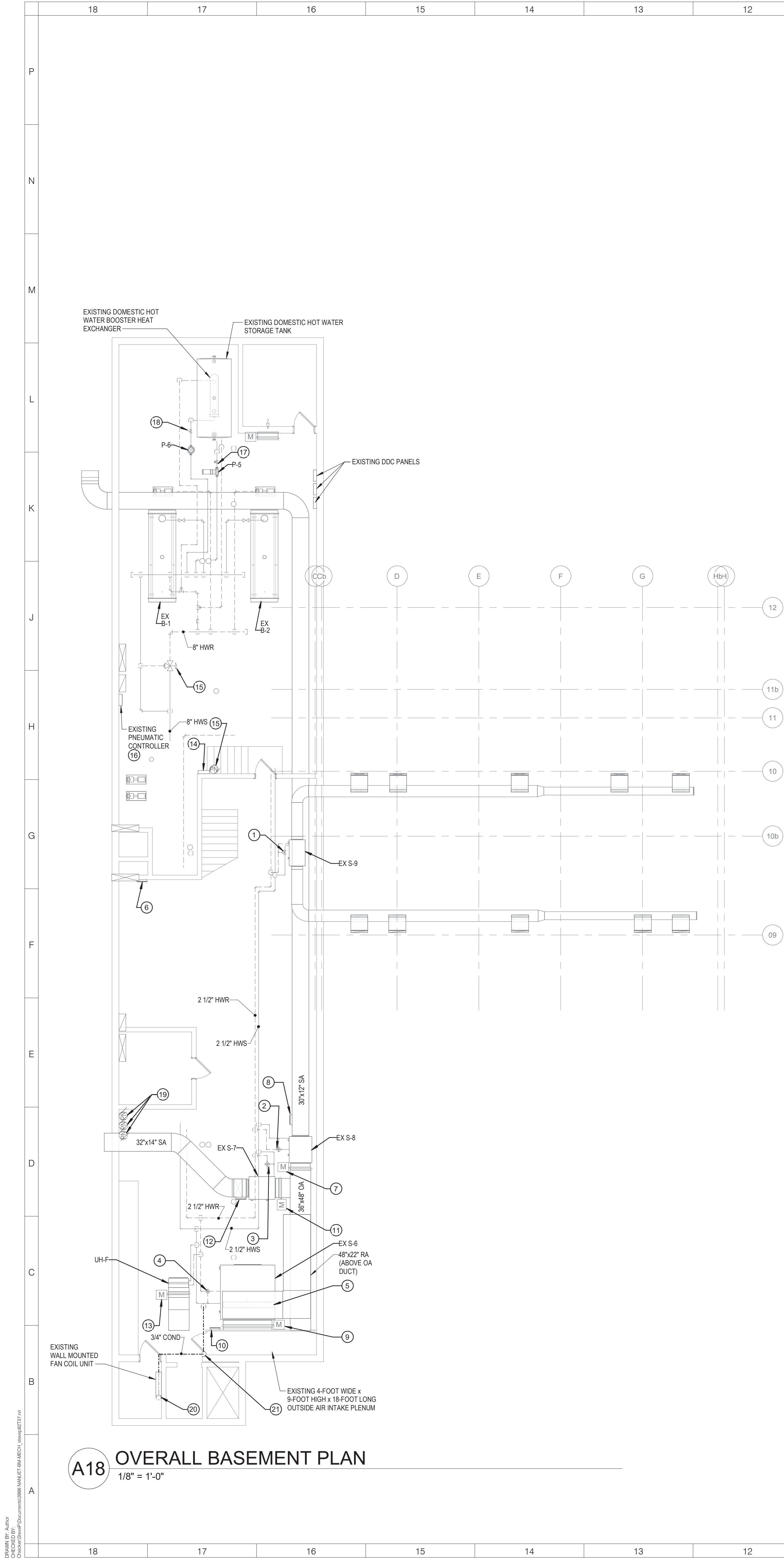
SHEET NAME:
**PARTIAL SECOND FLOOR
REMOVALS -
NORTHEAST**
SHEET NUMBER:

BM-M107

ISSUE FOR BID SET







A18 OVERALL BASEMENT PLAN
1/8" = 1'-0"

- KEYED NOTES:**
- DISCONNECT AND REMOVE EXISTING AIR HANDLING UNIT S-9 3-WAY PNEUMATIC CONTROL VALVE. DISCONNECT AND REMOVE ALL PNEUMATIC TUBING BACK TO PNEUMATIC MAIN. PROVIDE ELECTRONIC 3-WAY CONTROL VALVE RATED AT 4.9 GPM. DISCONNECT AND REMOVE ALL S-9 PNEUMATIC SENSORS AND CONTROL DEVICES AND CONVERT TO ELECTRONIC. TIE ALL ELECTRONIC SENSORS FROM S-9 INTO THE EXISTING S-9 DDC SYSTEM CONTROLLER OUTLINED IN KEYED NOTE 6.
 - DISCONNECT AND REMOVE EXISTING AIR HANDLING UNIT S-8 3-WAY PNEUMATIC CONTROL VALVE. DISCONNECT AND REMOVE ALL PNEUMATIC TUBING BACK TO PNEUMATIC MAIN. PROVIDE ELECTRONIC 3-WAY CONTROL VALVE RATED AT 9.6 GPM. DISCONNECT AND REMOVE ALL S-8 PNEUMATIC SENSORS AND CONTROL DEVICES AND CONVERT TO ELECTRONIC. TIE ALL ELECTRONIC SENSORS FROM S-8 INTO THE EXISTING S-8 DDC SYSTEM CONTROLLER OUTLINED IN KEYED NOTE 8.
 - DISCONNECT AND REMOVE EXISTING AIR HANDLING UNIT S-7 3-WAY PNEUMATIC CONTROL VALVE. DISCONNECT AND REMOVE ALL PNEUMATIC TUBING BACK TO PNEUMATIC MAIN. PROVIDE ELECTRONIC 3-WAY CONTROL VALVE RATED AT 9.6 GPM. DISCONNECT AND REMOVE ALL S-7 PNEUMATIC SENSORS AND CONTROL DEVICES AND CONVERT TO ELECTRONIC. TIE ALL ELECTRONIC SENSORS FROM S-7 INTO THE EXISTING S-7 DDC SYSTEM CONTROLLER OUTLINED IN KEYED NOTE 12.
 - DISCONNECT AND REMOVE EXISTING AIR HANDLING UNIT S-6 3-WAY PNEUMATIC CONTROL VALVE. DISCONNECT AND REMOVE ALL PNEUMATIC TUBING BACK TO PNEUMATIC MAIN. PROVIDE ELECTRONIC 3-WAY CONTROL VALVE RATED AT 28.5 GPM. DISCONNECT AND REMOVE ALL S-6 PNEUMATIC SENSORS AND CONTROL DEVICES AND CONVERT TO ELECTRONIC. TIE ALL ELECTRONIC SENSORS FROM S-6 INTO THE EXISTING S-6 DDC SYSTEM CONTROLLER OUTLINED IN KEYED NOTE 10.
 - DISCONNECT AND REMOVE EXISTING AIR HANDLING UNIT S-6 PNEUMATIC MOTORIZED RETURN AIR DAMPER ACTUATOR AT LOCATION SHOWN AND REPLACE WITH ELECTRONIC MOTORIZED DAMPER ACTUATOR. TIE CONTROL OF DAMPER INTO EXISTING DDC SYSTEM CONTROLLER SERVING S-3. REMOVE PNEUMATIC TUBING FROM REMOVED DAMPER BACK TO PNEUMATIC PIPING MAIN.
 - LOCATION OF EXISTING AIR HANDLING UNIT S-8 DDC SYSTEM CONTROLLER. DISCONNECT AND REMOVE 3-WAY CONTROL VALVE ELECTRIC-TO-PNEUMATIC TRANSUCER INCLUDING ASSOCIATED PNEUMATIC TUBING AND PNEUMATIC DIAL OPERATOR. REMOVE PNEUMATIC TUBING BACK TO PNEUMATIC PIPING MAIN AND CAP. TIE ELECTRONIC CONTROL VALVE OUTLINED IN KEYED NOTE 1 INTO THE S-9 DDC CONTROLLER AS REQUIRED.
 - DISCONNECT AND REMOVE EXISTING AIR HANDLING UNIT S-8 PNEUMATIC MOTORIZED OUTSIDE AIR DAMPER ACTUATOR AT LOCATION SHOWN AND REPLACE WITH ELECTRONIC MOTORIZED DAMPER ACTUATOR. TIE CONTROL OF DAMPER INTO EXISTING DDC SYSTEM CONTROLLER SERVING S-8. REMOVE PNEUMATIC TUBING FROM REMOVED DAMPER BACK TO PNEUMATIC PIPING MAIN.
 - LOCATION OF EXISTING AIR HANDLING UNIT S-8 DDC SYSTEM CONTROLLER. DISCONNECT AND REMOVE DAMPER ELECTRIC-TO-PNEUMATIC TRANSUCER AND 3-WAY CONTROL VALVE ELECTRIC-TO-PNEUMATIC TRANSUCER INCLUDING ASSOCIATED PNEUMATIC TUBING AND PNEUMATIC DIAL OPERATORS. REMOVE PNEUMATIC TUBING BACK TO PNEUMATIC PIPING MAIN AND CAP. TIE ELECTRONIC CONTROL VALVE AND ELECTRONIC MOTORIZED DAMPER OUTLINED IN KEYED NOTES 2 AND 7 INTO THE S-8 DDC CONTROLLER AS REQUIRED.
 - DISCONNECT AND REMOVE EXISTING AIR HANDLING UNIT S-6 PNEUMATIC MOTORIZED OUTSIDE AIR DAMPER ACTUATOR AT LOCATION SHOWN AND REPLACE WITH ELECTRONIC MOTORIZED DAMPER ACTUATOR. TIE CONTROL OF DAMPER INTO EXISTING DDC SYSTEM CONTROLLER SERVING S-6. REMOVE PNEUMATIC TUBING FROM REMOVED DAMPER BACK TO PNEUMATIC PIPING MAIN.
 - LOCATION OF EXISTING AIR HANDLING UNIT S-6 DDC SYSTEM CONTROLLER. DISCONNECT AND REMOVE DAMPER ELECTRIC-TO-PNEUMATIC TRANSUCER AND 3-WAY CONTROL VALVE ELECTRIC-TO-PNEUMATIC TRANSUCER INCLUDING ASSOCIATED PNEUMATIC TUBING AND PNEUMATIC DIAL OPERATORS. REMOVE PNEUMATIC TUBING BACK TO PNEUMATIC PIPING MAIN AND CAP. TIE ELECTRONIC CONTROL VALVE AND ELECTRONIC MOTORIZED DAMPERS OUTLINED IN KEYED NOTES 4, 5 AND 9 INTO THE S-6 DDC CONTROLLER AS REQUIRED.
 - DISCONNECT AND REMOVE EXISTING AIR HANDLING UNIT S-7 PNEUMATIC MOTORIZED OUTSIDE AIR DAMPER ACTUATOR AT LOCATION SHOWN AND REPLACE WITH ELECTRONIC MOTORIZED DAMPER ACTUATOR. TIE CONTROL OF DAMPER INTO EXISTING DDC SYSTEM CONTROLLER SERVING S-7. REMOVE PNEUMATIC TUBING FROM REMOVED DAMPER BACK TO PNEUMATIC PIPING MAIN.
 - LOCATION OF EXISTING AIR HANDLING UNIT S-7 DDC SYSTEM CONTROLLER. DISCONNECT AND REMOVE DAMPER ELECTRIC-TO-PNEUMATIC TRANSUCER AND 3-WAY CONTROL VALVE ELECTRIC-TO-PNEUMATIC TRANSUCER INCLUDING ASSOCIATED PNEUMATIC TUBING AND PNEUMATIC DIAL OPERATORS. REMOVE PNEUMATIC TUBING BACK TO PNEUMATIC PIPING MAIN AND CAP. TIE ELECTRONIC CONTROL VALVE AND ELECTRONIC MOTORIZED DAMPER OUTLINED IN KEYED NOTES 3 AND 11 INTO THE S-7 DDC CONTROLLER AS REQUIRED.
 - DISCONNECT AND REMOVE EXISTING HYDRONIC UNIT HEATER UH-F DUAL PNEUMATIC FACE AND BAYPASS DAMPER AT LOCATION SHOWN AND REPLACE WITH MANUAL DAMPER OPERATOR LOCKED IN OPEN POSITION. REMOVE PNEUMATIC TUBING FROM REMOVED DAMPER BACK TO PNEUMATIC PIPING MAIN.
 - LOCATION OF EXISTING BUILDING HEATING PLANT DDC SYSTEM CONTROLLER.
 - DISCONNECT AND REMOVE MAIN BUILDING HEATING LOOP 3-WAY PNEUMATIC MIXING CONTROL VALVE. DISCONNECT AND REMOVE ALL PNEUMATIC TUBING BACK TO PNEUMATIC MAIN. DISCONNECT AND REMOVE 3-WAY CONTROL VALVE ELECTRIC-TO-PNEUMATIC TRANSUCER INCLUDING ASSOCIATED PNEUMATIC TUBING AND PNEUMATIC DIAL OPERATOR LOCATED ADJACENT TO BUILDING HEATING PLANT DDC SYSTEM CONTROLLER. REMOVE ASSOCIATED WIRING BACK TO CONTROL PANEL AS REQUIRED. AT LOCATION OF REMOVED PNEUMATIC 3-WAY MIXING VALVE PROVIDE AN ELECTRONIC 3-WAY MIXING CONTROL VALVE RATED AT 550 GPM. TIE OPERATION OF MIXING VALVE INTO EXISTING BUILDING HEATING PLANT DDC SYSTEM CONTROLLER OUTLINED IN KEYED NOTE 14.
 - DISCONNECT AND REMOVE PNEUMATIC PIPING AND ASSOCIATED PRESSURE DIAL WITHIN THE PNEUMATIC CONTROL PANEL RELATED TO THE CONTROL PRESSURE ON THE MAIN HOT WATER SUPPLY 3-WAY VALVE OUTLINED IN KEYED NOTE 15. REMOVE PNEUMATIC PIPING BACK TO ASSOCIATED PIPING MAIN AND CAP.
 - DISCONNECT AND REMOVE EXISTING DOMESTIC HOT WATER STORAGE TANK 2-WAY PNEUMATIC CONTROL VALVE. DISCONNECT AND REMOVE ALL PNEUMATIC TUBING BACK TO PNEUMATIC MAIN. PROVIDE ELECTRONIC 2-WAY CONTROL VALVE RATED AT 160 GPM. DISCONNECT AND REMOVE ALL STORAGE TANK PNEUMATIC SENSORS AND CONTROL DEVICES AND CONVERT TO ELECTRONIC. TIE ALL ELECTRONIC SENSORS FROM THE STORAGE TANK INTO THE EXISTING DDC SYSTEM CONTROLLER OUTLINED IN KEYED NOTE 14.
 - DISCONNECT AND REMOVE EXISTING DOMESTIC HOT WATER BOOSTER HEATER HEAT EXCHANGER 2-WAY PNEUMATIC CONTROL VALVE. DISCONNECT AND REMOVE ALL PNEUMATIC TUBING BACK TO PNEUMATIC MAIN. PROVIDE ELECTRONIC 2-WAY CONTROL VALVE RATED AT 20 GPM. DISCONNECT AND REMOVE ALL HEAT EXCHANGER PNEUMATIC SENSORS AND CONTROL DEVICES AND CONVERT TO ELECTRONIC. TIE ALL ELECTRONIC SENSORS FROM THE HEAT EXCHANGER INTO THE EXISTING DDC SYSTEM CONTROLLER OUTLINED IN KEYED NOTE 14.
 - DISCONNECT AND REMOVE ALL EXISTING AIR HANDLING UNITS S-6, S-7 AND S-8 PNEUMATIC CONTROL, FAN OPERATORS, SENSORS AND RELAY DEVICES. DISCONNECT AND REMOVE ALL PNEUMATIC TUBING BACK TO PNEUMATIC PIPING MAIN AND CAP. CONVERT ALL PNEUMATIC CONTROL DEVICES SERVING S-6, S-7 AND S-8 TO ELECTRONIC AND PROVIDE RELAYS FROM FAN START/STOP MOTOR STARTER TO EXISTING DDC CONTROL PANELS SERVING EACH UNIT TO ALLOW FOR ELECTRONIC FAN DIGITAL START/STOP OPERATION. DISCONNECT AND REMOVE PNEUMATIC TUBING BETWEEN PNEUMATIC CONTROL DEVICES AND EXISTING S-6, S-7 AND S-8 SPACE SENSORS. PROVIDE RELAYS FROM EXISTING S-6, S-7 AND S-8 SPACE SENSORS TO EXISTING DDC CONTROL PANELS SERVING EACH UNIT TO ALLOW FOR ELECTRONIC ANALOG INPUT OF EACH SPACE TEMPERATURE TO THE DDC SYSTEM.
 - DISCONNECT AND REMOVE OPEN-ENDED PVC HOSE FROM CONDENSATE DRAIN OUTLET CONNECTION ON EXISTING ELEVATOR MACHINE ROOM FAN COIL UNIT AND PROVIDE A 3/4" HARD PIPED CONNECTION TO THE CONDENSATE OUTLET. PROVIDE A P-TRAP BELOW FAN COIL UNIT. THEN ROUTE 3/4" CONDENSATE PIPING THROUGH ELEVATOR MACHINE ROOM TO MECHANICAL AREA OF BASEMENT AS SHOWN.
 - PROVIDE 3/4" CONDENSATE DROP DOWN AT LOCATION SHOWN TO FLOOR LEVEL. THEN ROUTE 3/4" CONDENSATE PIPING BELOW BOTTOM OF DOOR OPENING TO OA INTAKE PLENUM. THEN ROUTE 3/4" CONDENSATE PIPING ALONG FLOOR LEVEL TO NEW FLOOR DRAIN BEING PROVIDED ON PLUMBING DRAWINGS. TERMINATE CONDENSATE PIPING OPEN-ENDED ABOVE NEW FLOOR DRAIN.

ARCHITECT

ksqdesign

NEW YORK OKLAHOMA

KSQ Design
215 W 40th Street 15th Floor
New York, NY 10018
646.435.0660 office
www.ksqdesign.com

Owner

Nanuet Union Free School District
103 Church St. Nanuet, NY 10954
845.627.9880 office
http://www.nanuetusd.org/

Structural Engineer

Clapper Structural Engineering
160 Partition Street
Saugerties, NY 12477
845.943.9801
www.clappersstructural.com

MEP Engineer

Sage Engineering Associates, LLP
9 Columbia Circle
Albany NY 12203
518.453.6991 office
518.453.6992 fax
www.sageellp.com

Environmental Engineer

Quest Environmental Solutions
1376 Route 9
Wappingers Falls, NY 12590
845.298.6251
www.qualityenv.com

Construction Manager

Jacobs
One Penn Plaza
54th Floor, Suite 5420
New York, NY 10119
646.906.6550
www.jacobs.com



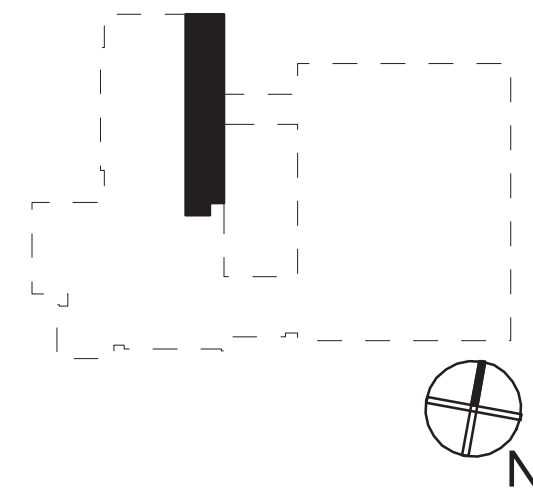
**NUFSD
BOND
PROJECTS
PH3**

☐ SED#50-01-08-03-0-003-035 (HIGH SCHOOL)
☒ SED#50-01-08-03-0-004-020 (BARR MIDDLE SCHOOL)

High School
103 Church St.
Nanuet, NY 10954

Barr Middle School
50 Blauvelt Rd #1
Nanuet, NY 10954

KEY PLAN



REVISIONS		
No.	Description	Date

ISSUED: BID SET ISSUANCE

DATE: 06/06/2023

SCALE: 1/8" = 1'-0"

SHEET NAME:
BASEMENT PLANS

SHEET NUMBER:

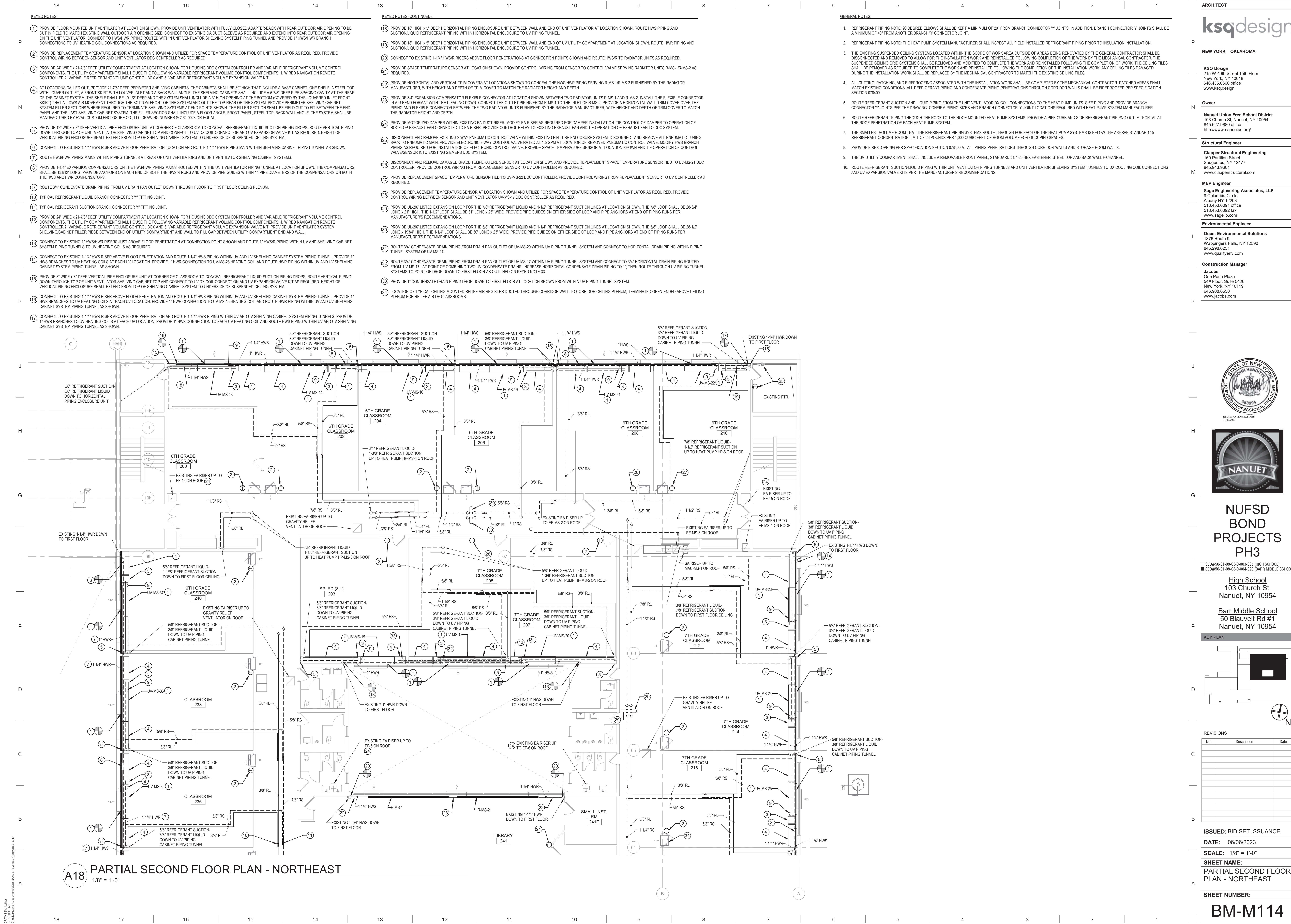
BM-M110



[illegible]

BM-M113

ISSUE FOR BID SET



ARCHITECT

ksqdesign

NEW YORK OKLAHOMA

KSQ Design
215 W 40th Street 15th Floor
New York, NY 10018
646.435.0660 office
www.ksqdesign

Owner

Nanuet Union Free School District
103 Church St. Nanuet, NY 10954
845.627.9880 office
http://www.nanuetusd.org/

Structural Engineer

Clapper Structural Engineering
160 Partition Street
Saugerties, NY 12477
845.943.9801
www.clappersstructural.com

MEP Engineer

Sage Engineering Associates, LLP
9 Columbus Circle
Albany NY 12203
518.453.6991 office
518.453.6992 fax
www.sageall.com

Environmental Engineer

Quest Environmental Solutions
1376 Route 9
Wappingers Falls, NY 12590
845.298.6251
www.qualityenv.com

Construction Manager

Jacobs
One Penn Plaza
54th Floor, Suite 5420
New York, NY 10119
646.906.6550
www.jacobs.com



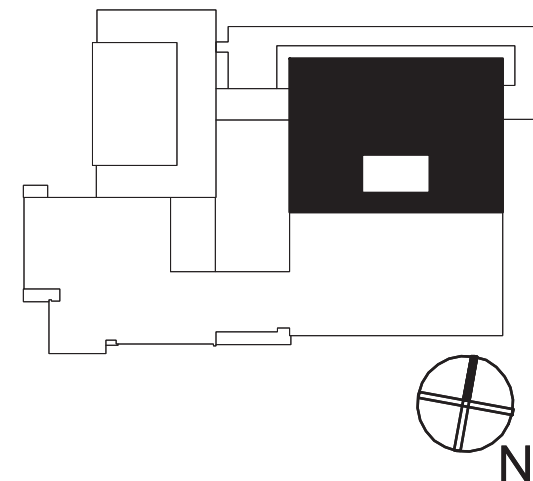
NUFSD BOND PROJECTS PH3

SED#50-01-08-03-0-003-035 (HIGH SCHOOL)
SED#50-01-08-03-0-004-020 (BARR MIDDLE SCHOOL)

High School
103 Church St.
Nanuet, NY 10954

Barr Middle School
50 Blauvelt Rd #1
Nanuet, NY 10954

KEY PLAN



REVISIONS		
No.	Description	Date

ISSUED: BID SET ISSUANCE

DATE: 06/06/2023

SCALE: 1/8" = 1'-0"

SHEET NAME:
PARTIAL SECOND FLOOR
PLAN - NORTHEAST

SHEET NUMBER:

BM-M114



