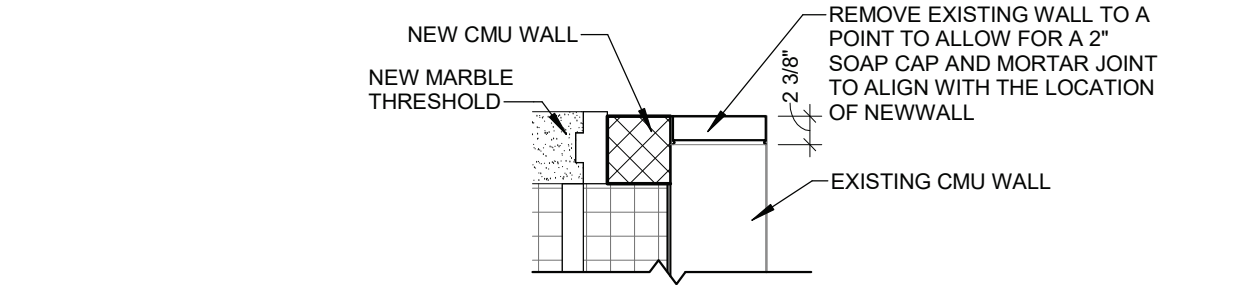
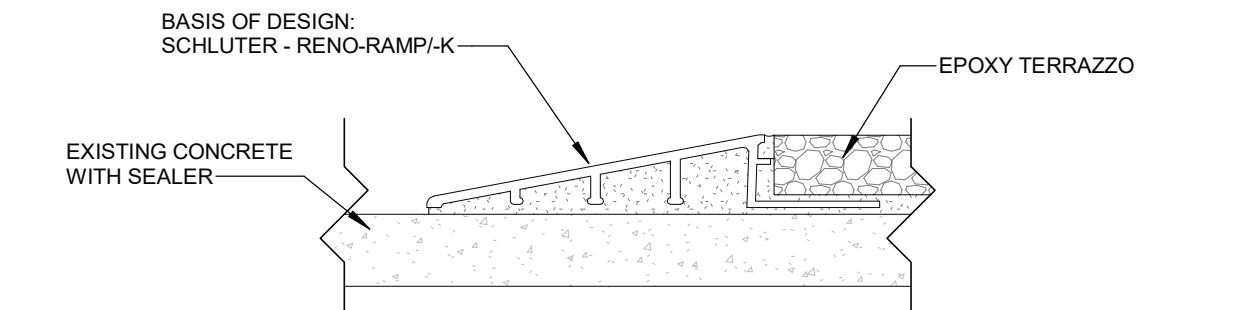


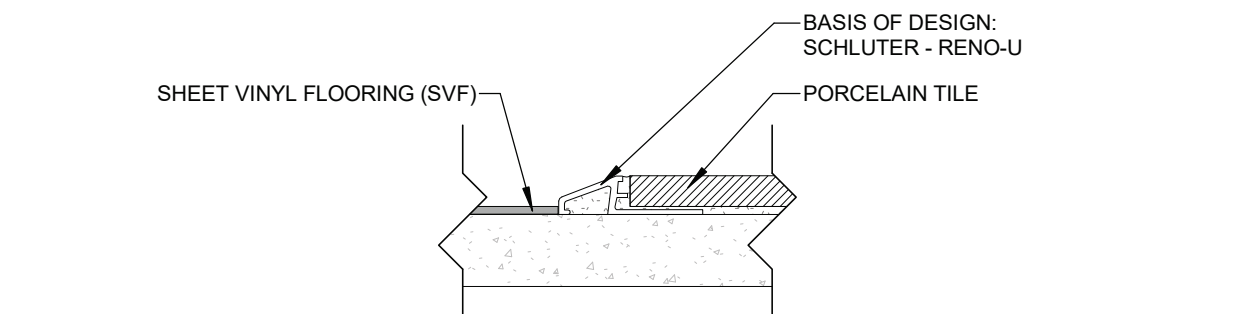
11/6/2023 3:59:04 PM



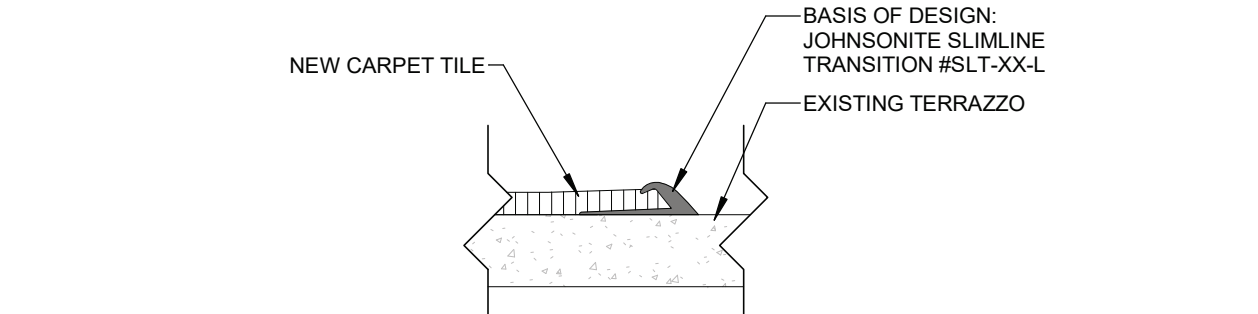
4 PLAN DETAIL - LOCKER ROOM WALL CORNER
SCALE: 3/4" = 1'-0"



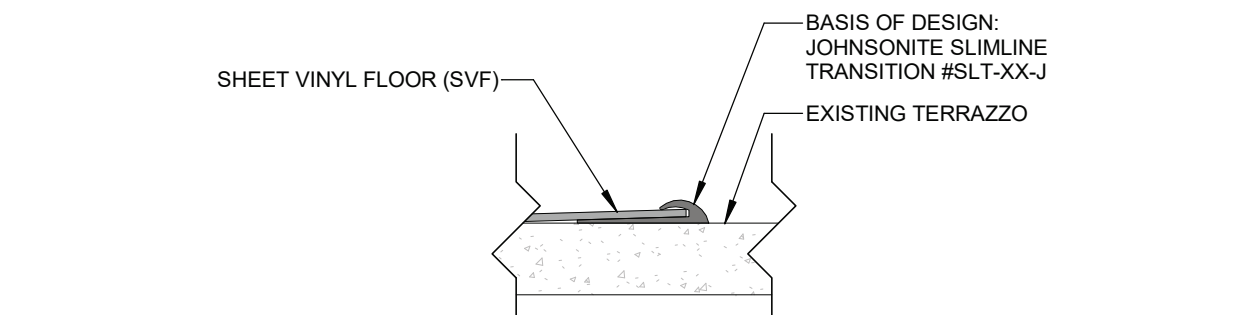
5 EPOXY TERRAZZO TO SEALED CONC TRANSITION
SCALE: 6" = 1'-0"



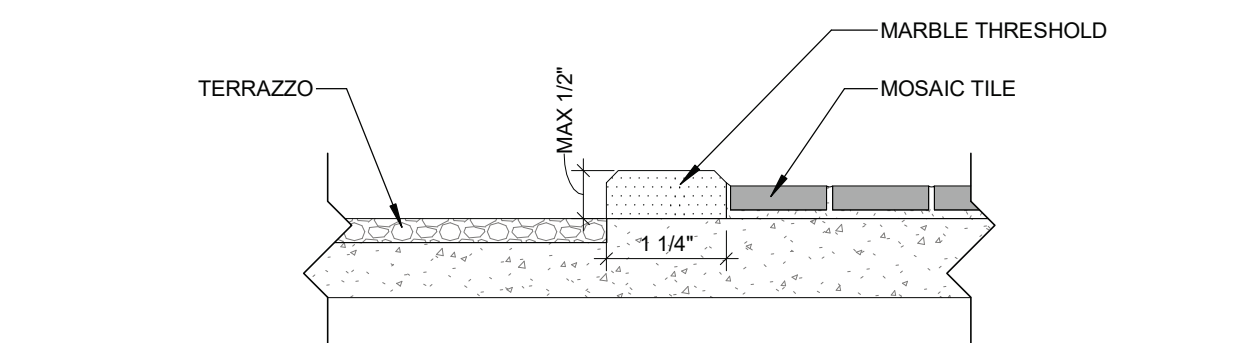
6 TILE TO SVF TRANSITION
SCALE: 6" = 1'-0"



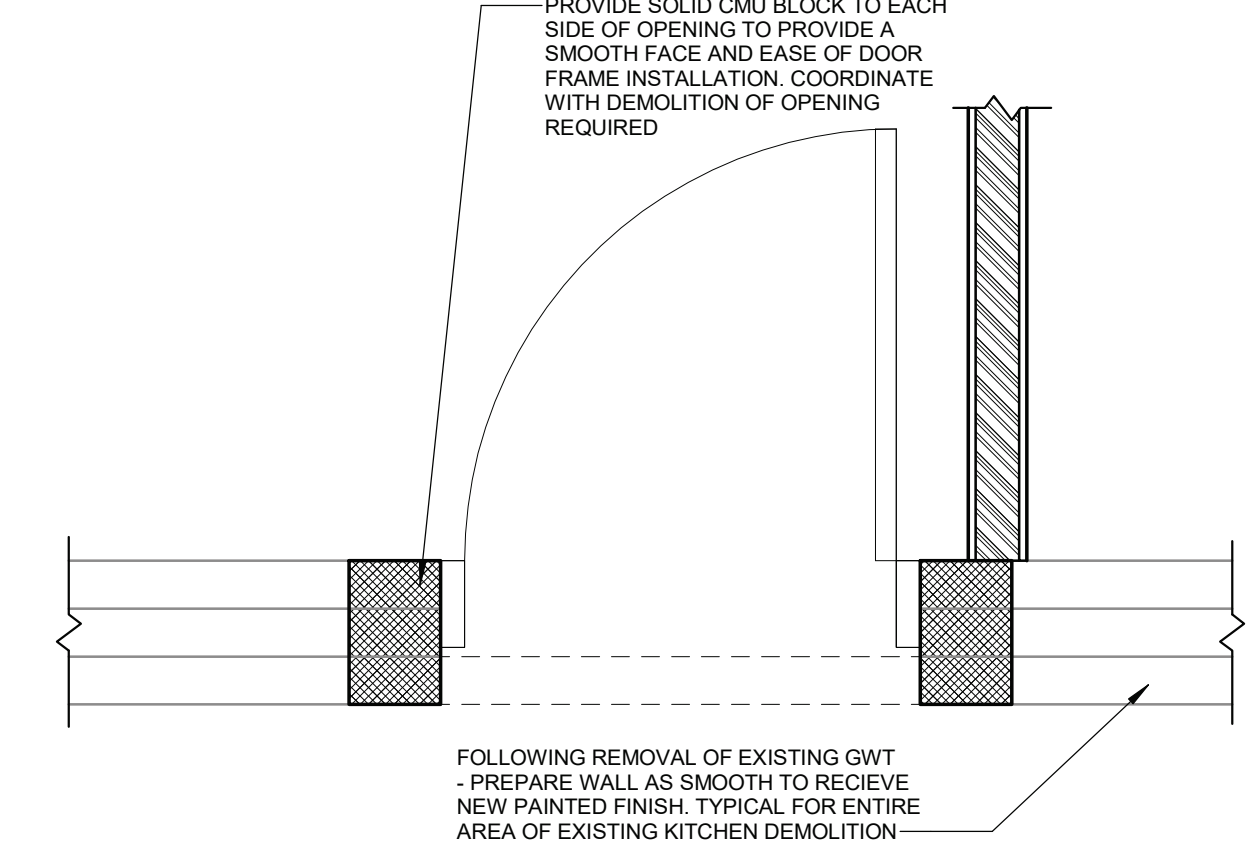
7 CARPET TO TERRAZZO TRANSITION
SCALE: 6" = 1'-0"



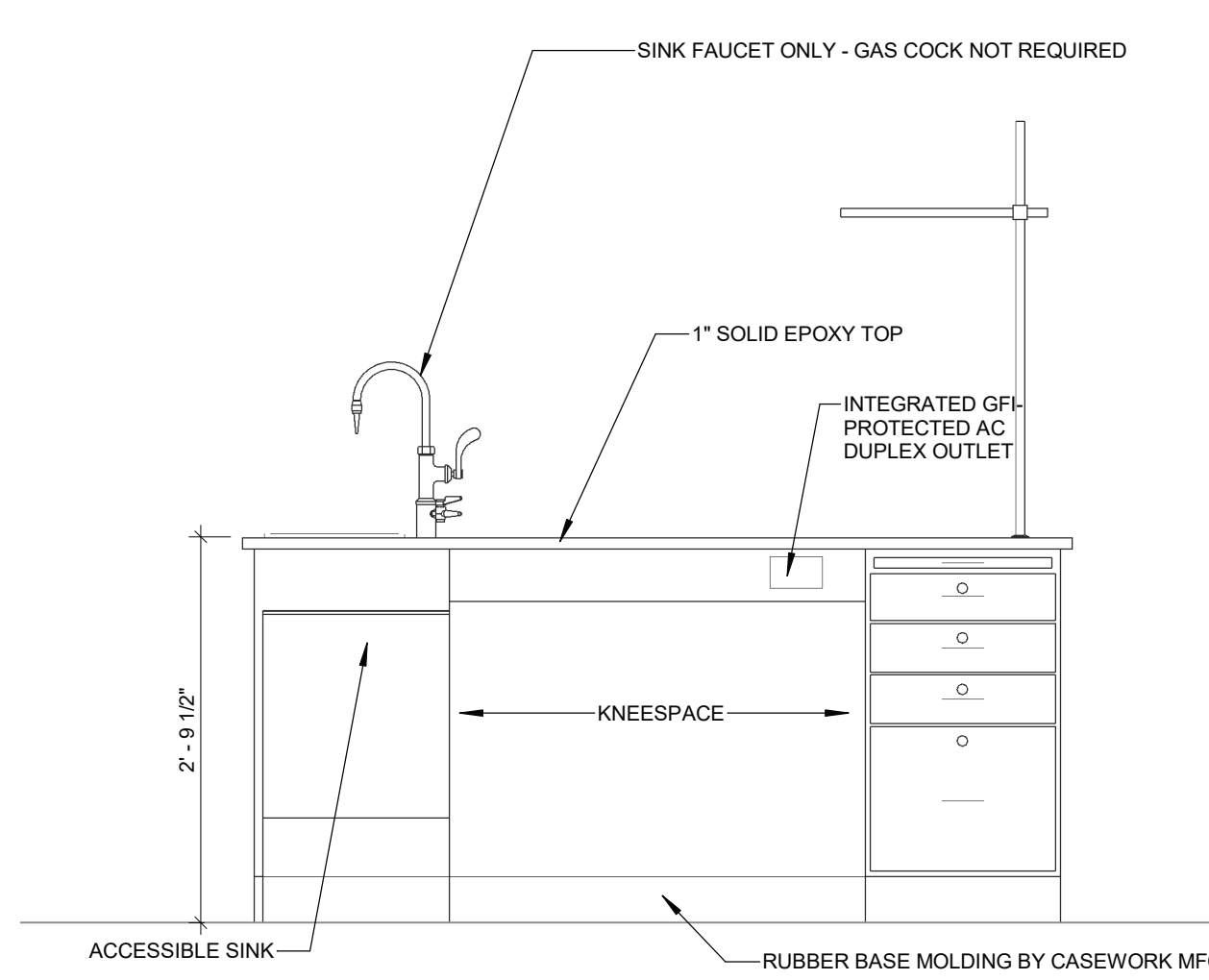
8 SVF TO TERRAZZO TRANSITION
SCALE: 6" = 1'-0"



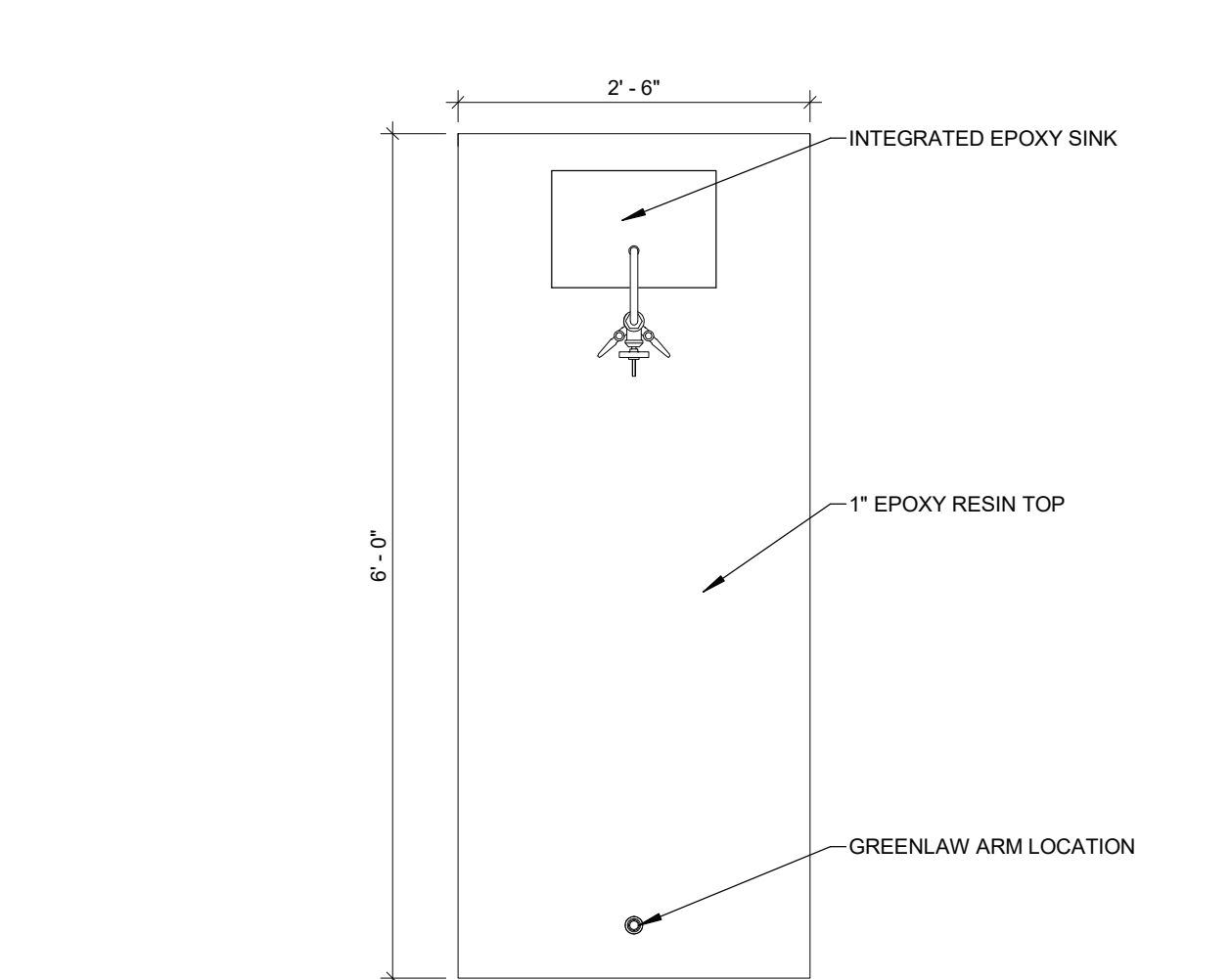
9 MARBLE THRESHOLD DETAIL
SCALE: 6" = 1'-0"



1 PLAN DETAIL - OFFICE 166D ENTRY
SCALE: 3/4" = 1'-0"



2 DETAIL - ADA DEMO TABLE
SCALE: 3/4" = 1'-0"



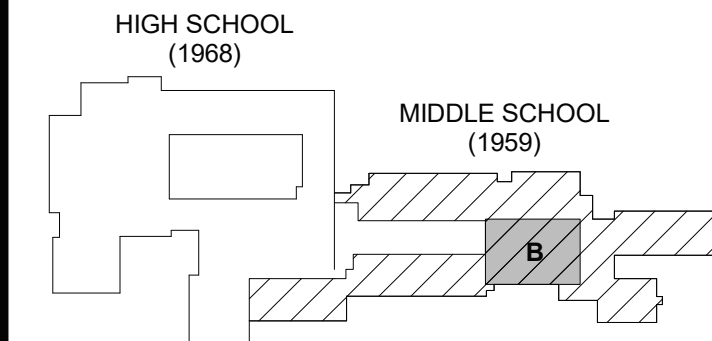
3 PLAN DETAIL - ADA DEMO TABLE
SCALE: 3/4" = 1'-0"

KEYNOTE LEGEND

GENERAL NOTES

1. AT TRANSITIONS OCCURRING AT DOORWAYS, ALIGN THE TRANSITION WITH THE CENTER OF THE DOOR THICKNESS SO THE TRANSITION CANNOT BE SEEN WITH THE DOOR CLOSED FROM EITHER SIDE.

KEY PLAN:



SED CONTROL NO. 44-18-00-05-0-012-040
COPYRIGHT © 2023 - BCA ARCHITECTS & ENGINEERS, WARNING - IT IS A VIOLATION OF THE NEW YORK STATE EDUCATION LAW FOR ANY UNAUTHORIZED ALTERATIONS TO THIS DOCUMENT AS PER ARTICLE 145 AND 147.

BCA Architects & Engineers
Ithaca | Saratoga Springs | Watertown | Rochester
WWW.THEBCGROUP.COM

BCA
ARCHITECTS
ENGINEERS



PORT JERVIS CITY SCHOOL DISTRICT
ALTERATIONS TO:
PORT JERVIS MIDDLE SCHOOL / HIGH SCHOOL
Port Jervis - Orange County - New York

REV	DATE	DESCRIPTION
1	11/6/2023	ADDENDUM NO. 1
DRAWN BY	DATE	PROJECT NUMBER
MHK	2019-011 PH2	
CHECKED BY	DATE	
BJL	10/6/2023	

PLAN & INTERIOR DETAILS

BUILDING MS SHEET NUMBER A702