



Port Jervis City School District

Alterations to:

**Middle School (Former Anna S. Kuhl Elementary School) / High School
& New Varsity Baseball / Softball Dugouts / Storage**

SED Control No.'s: 44-18-00-05-0-012-040 Middle School (former Anna S. Kuhl ES) / High School

44-18-00-05-7-057-001 New Varsity Baseball Dugout / Storage

44-18-00-05-7-058-001 New Varsity Softball Dugout / Storage

BCA Project No. 2019-011 Ph2

Addendum No. 2

November 10, 2023

To: All Bidders

This addendum is hereby made part of the Contract Documents as though it were originally included therein. It modifies the following documents:

Original Drawings and Project Manual dated 10/06/2023.

Addendum No. 1 dated 11/06/2023.

All Bidders must acknowledge receipt of this Addendum in the space provided on the Form of Proposal.

NEW 8 1/2" x 11" DRAWINGS:

AD2 A1-Partial Middle School Cafeteria Plan-Room 122

REISSUED 24" x 36" DRAWINGS:

A201- Enlarged Plan & Interior Elevations- Technology Room

NEW SPECIFICATION SECTIONS:

09 5114- ACOUSTICAL FABRIC-FACED PANEL CEILINGS

10 5613- METAL STORAGE SHELVING

REVISIONS TO THE PROJECT MANUAL:

A. Refer to Table of Contents; **ADD** the following new specification sections accordingly:

- 09 5114- Acoustical Fabric-Faced Panel Ceilings
- 10 5613- Metal Storage Shelving

B. Refer to Specification Section 01 1000- Multiple Contract Summary:

1. Paragraph 1.05.C.4: **AMEND** to read as follows:

“4. **The Contract for Electrical Construction (EC)** includes electric power distribution, lighting and telecommunication and other low voltage systems. The EC is responsible for coordinating with other prime contractors and for administrative responsibilities. The EC is responsible for all demolition of utility boxes and installation of steel supports for related scoreboards. Work under this prime contract includes but is not limited to, the following specification sections:”

2. Refer to Paragraph 1.05.C.5: **AMEND** to read as follows:

“5. **The Contract for Site Construction (SC)** includes demolition of existing fields, courts and associated construction on the west side of the building complex and construction of new play fields and courts and associated construction. The SC is responsible for coordinating with the other prime contractors, notably the EC and PC for demolition/relocation of existing utilities and installation of new utilities, and for administrative responsibilities. The SC is responsible for providing all trenching and backfill for all electrical conduits. Work under this prime Contract includes, but is not limited to, the following specification sections:”

C. Refer to Specification Section 09 2216 –Non-Structural Metal Framing; Paragraph 2.02.A.5.: DELETE in its entirety.

D. Refer to Specification Section 09 2216- Non-Structural Metal Framing; Paragraph 2.02.D.: ADD the following:

“ 4. Locations: Provide/install Sound Isolation Tape at all wall outlets or switches in wall between Chorus Room 167 and Band Room #168- installed by GC as part of acoustical wall system.”

REVISIONS TO THE CONTRACT DRAWINGS:

A. Refer to *Drawing A201*; DELETE in its' entirety and REPLACE with the attached A201.

B. Refer to *Drawing A204; Detail 1*; Refer to wall type shown as E20, AMEND wall type to be E30.

C. Refer to *Drawing A203; Detail 1 and Detail 5*, ADD the following:

“Provide a manual window shade, type as specified in section 12 2400, at each clerestory window location.”

D. Refer to *Drawing A700; Detail 5*; Note: “Locker Type B-Attach at wall and base, by others”, AMEND note to read:

“Locker type as specified- attach as required at wall and base with blocking as shown.”

E. Refer to *Drawing A902*; At Signage Type Designations Key; ADD the following note below:

“Note: Refer to Finish Plans for locations of signage types with reference tags shown above.”



F. Refer to ***Drawing EL102***; Underground Electric Reference Tags; TAG "B": **ADD** the following:

"add a quantity of 3 conductors for the #2 15kv cable tag."

END OF ADDENDUM

Please do not hesitate to contact me with any questions on this addendum, thank you.

Respectfully Submitted,
BCA ARCHITECTS & ENGINEERS

A handwritten signature in black ink, appearing to read "Scott J. Duell", written in a cursive style.

Scott J. Duell, RA, LEED AP
Principal

SECTION 09 5114
ACOUSTICAL FABRIC-FACED PANEL CEILINGS

PART 1 GENERAL

1.01 SECTION INCLUDES

- A. Curved fabric-wrapped ceiling clouds (Concave and Convex Acoustical Canopies Type A & B-Band and Chorus Rooms).
- B. Trim and miscellaneous accessories.

1.02 RELATED REQUIREMENTS

- A. Section 01 6116 - Volatile Organic Compound (VOC) Content Restrictions.
- B. Section 05 3100 - Steel Decking: Placement of special anchors or inserts for suspension system.
- C. Section 23 3700 - Air Outlets and Inlets.
- D. Section 26 5100 - Interior Lighting.

1.03 REFERENCE STANDARDS

- A. ASTM C423 - Standard Test Method for Sound Absorption and Sound Absorption Coefficients by the Reverberation Room Method 2022.
- B. ASTM C665 - Standard Specification for Mineral-Fiber Blanket Thermal Insulation for Light Frame Construction and Manufactured Housing 2017.
- C. ASTM E84 - Standard Test Method for Surface Burning Characteristics of Building Materials 2022.
- D. ASTM E1264 - Standard Classification for Acoustical Ceiling Products 2022.
- E. ASTM E1477 - Standard Test Method for Luminous Reflectance Factor of Acoustical Materials by Use of Integrating-Sphere Reflectometers 1998a (Reapproved 2022).

1.04 SUBMITTALS

- A. See Section 01 3000 - Administrative Requirements, for submittal procedures.
- B. Product Data: Manufacturer's data sheets on each product to be used, including:
 - 1. Preparation instructions and recommendations.
 - 2. Storage and handling requirements and recommendations.
 - 3. Installation methods.
- C. Fabric Selection Samples: Manufacturer's full range of fabric samples illustrating available colors and textures.
- D. Verification Samples: One samples, minimum size 8 by 8 inches, representing actual acoustical panel product.

1.05 DELIVERY, STORAGE, AND HANDLING

- A. Deliver products in manufacturer's unopened packaging and store unopened in fully enclosed space until ready for installation. Protect products from exposure to sunlight, moisture, and mechanical damage.
- B. Handle acoustical panels carefully to avoid soiling exposed surfaces or damaging surfaces and edges.

1.06 FIELD CONDITIONS

- A. Maintain temperature within 15 degrees Fahrenheit and relative humidity within 10 percent of design conditions for spaces of installation not less than 48 hours before installation begins and thereafter.

1.07 WARRANTY

- A. See Section 01 7800 - Closeout Submittals, for additional warranty requirements.
- B. Provide acoustical panel manufacturer's standard written ten-year limited warranty.

PART 2 PRODUCTS

2.01 ACOUSTICAL PANELS

- A. Manufacturers:
 - 1. Acoustics First Corporation Sonora Sound Wave Ceiling Clouds; www.acousticsfirst.com.
 - 2. Substitutions: See Section 01 6000 - Product Requirements.
- B. Provide panels comprising a composite structural fiberglass core with nonwoven polyester textile surface wrapped on edges; with properties as follows:
 - 1. Panel Thickness: 1 inch.
 - 2. Panel Size: As shown on reflected ceiling plan.
 - 3. Recycled content: Fiberglass- 52% pre-consumer and 5% post-consumer recycled content..
 - 4. Edge Condition: Provide the following:
 - a. Square resin-hardened edge.
 - 5. Radius: 132 degree concave or convex where shown on construction documents.
 - 6. Noise Reduction Coefficient (NRC): Minimum 0.85, measured in accordance with ASTM C423.
 - 7. Sound Absorption Average: (SAA) 0.89, measured in accordance with ASTM C423.
 - 8. Surface Burning Characteristics: Flame spread index less than 25, smoke developed index less than 100; Class A, per ASTM E84 and ASTM E1264.
 - 9. Light Reflectance: LR-1 (0.75), measured in accordance with ASTM E1477.
 - 10. Moisture Resistance: Resistant to relative humidity up to 95 percent at 104 degrees F for 30 days.
 - 11. Mold and Mildew Resistance: In accordance with requirements of ASTM C665.

END OF SECTION

**SECTION 10 5613
METAL STORAGE SHELVING**

PART 1 GENERAL

1.01 SECTION INCLUDES

- A. Heavy-Duty open- (Four Post) shelving.
- B. Cantilevered Horizontal Lumber Rack.
- C. Vertical Lumber Rack.
- D. Shelving accessories.

1.02 RELATED REQUIREMENTS

- A. Section 06 1000 - Rough Carpentry: Blocking and reinforcement in walls for anchoring shelving units.

1.03 SUBMITTALS

- A. See Section 01 3000 - Administrative Requirements, for submittal procedures.
- B. Product Data: Manufacturer's data sheets on each product to be used, including:
 - 1. Rated uniform shelf loads.
 - 2. Details of shelving assemblies, including reinforcement.
 - 3. Accessories.
 - 4. Specimen warranty.
 - 5. Maintenance methods.
- C. Test Reports: Provide independent agency test reports documenting compliance with specified structural requirements.
- D. Selection Samples: For each finish product specified, color chips representing manufacturer's full range of available colors and finishes.
- E. Warranty: Submit manufacturer warranty and ensure that forms have been completed in Owner's name and registered with manufacturer.

1.04 QUALITY ASSURANCE

- A. Manufacturer Qualifications: Company specializing in manufacturing products specified in this section, with not less than three years of documented experience.

1.05 DELIVERY, STORAGE, AND HANDLING

- A. Inspect for dents, scratches, or other damage. Replace damaged units.
- B. Store in manufacturer's unopened packaging until ready for installation.
- C. Store under cover and elevated above grade.

1.06 WARRANTY

- A. See Section 01 7800 - Closeout Submittals, for additional warranty requirements.
- B. Provide one year manufacturer warranty covering defects of manufacturing and workmanship and rust and corrosion.

PART 2 PRODUCTS

2.01 MANUFACTURERS

- A. Four Post Shelving: (item F6.81).
 - 1. Hallowell; H-post open shelving units: www.hallowell-list.com/#sle.
 - 2. Substitutions: See Section 01 6000 - Product Requirements.
- B. Cantilevered Shelving: (item: F6.70).
 - 1. Basis of Design: Mecor: Omaha Cantilever Rack: www.mecor-omaha.com/#sle..

2. Substitutions: See Section 01 6000 - Product Requirements.
- C. Vertical Lumber Rack: (item # f6.71)
 1. Basis of Design: Durham Mfg. Model # VBR-8436-95: www.durhammfg.com/#sle.
 2. Substitutions: See Section 01 6000-Product Requirements.

2.02 SHELVING - GENERAL

- A. See drawings for layout and sizes.
- B. Anchors: Provide anchoring hardware to secure each shelving unit to floor and wall.
 1. Provide hardware of type recommended by manufacturer for substrate.

2.03 FOUR POST SHELVING

- A. Four Post Shelving: Steel H-post open shelving units with sway bracing, shelving brackets, shelving surfaces, and accessories as specified.
 1. Unit Width: 48 inches, center to center of posts.
 2. Shelf Capacity: Uniform distributed load of 100 psf, minimum.
 3. Unit Depth: 24" center to center of posts.
 4. Shelves per Unit: 6 shelves per unit.
 5. Unit Height: 7'-3 inches, overall , maximum.
 6. Finish: Baked enamel, medium gloss.
 7. Color: Manufacturer's standard gray.
- B. Posts and Beams: Formed sheet members; perforations exposed on face of members are not acceptable.
 1. Metal Thickness: 16 gauge, 0.0598 inch.
 2. Post Shape: Tee intermediate posts, angle end posts forming corners.
 3. Post Face Width: 2 inches, maximum.
 4. Connecting Hardware: Manufacturer's standard.
- C. Bracing: Formed sheet members.
 1. Back Sway Bracing: Either strap or panel; at back of each unit.
 2. Side Sway Bracing: Either strap or panel; at each side of each unit.
 3. Strap Sway Bracing: One strap installed diagonally, 16 gauge, 0.0598 inch; welded, riveted, or bolted to uprights.
 4. Panel Sway Bracing: Formed sheet metal panels, 20 gauge, 0.0359 inch; welded, riveted, or bolted to uprights.
- D. Shelves: Formed sheet, finished on all surfaces , with slots for dividers.
 1. Metal Thickness: 16 gauge, 0.0598 inch.
 2. Shelf Connection to Posts: Manufacturer's standard.

2.04 CANTILEVERED HORIZONTAL LUMBER RACK

- A. Cantilevered lumber rack: Freestanding formed steel frame with slots for cantilevered arms. Based on Meco Brand Series 1000 Medium Duty Cantilever Rack with starter unit and add on units to equal an overall with along the wall of not more than 144" (12'-0").
 1. Finish: Baked enamel, medium gloss.
 2. Color: Manufacturer's standard gray.

2.05 VERTICAL LUMBER RACK

- A. Based on Durham Mfg. Vertical bar rack, 3000 lbs. capacity, 39-1/4 x 24 x 84"
 1. Model: #VBR-8436-95
 2. Finish: Powder Coat textured
 3. Color: Standard Gray
 4. Ship weight: 113 lbs.

PART 3 EXECUTION

3.01 EXAMINATION

- A. Verify that substrate is level and that clearances are as specified.
- B. Do not begin installation until substrates have been properly prepared.
- C. If substrate preparation is the responsibility of another installer, notify Architect of unsatisfactory preparation before proceeding.

3.02 INSTALLATION

- A. Install in accordance with manufacturer's instructions.
- B. Anchor and reinforce as specified, as indicated on drawings, and as recommended by manufacturer.
- C. Install shelving or racks with shelf surfaces level and vertical supports plumb; adjust feet and bases as required.
- D. Out-Of-Square Tolerance - Four Post Shelving: Maximum of 1/8 inch difference in distance between bottom shelf and canopy top, measured along any post in any direction.

3.03 CLEANING

- A. Clean shelving and surrounding area after installation.

3.04 PROTECTION

- A. Protect installed products until completion of project.
- B. Touch-up, repair or replace damaged products before Date of Substantial Completion.

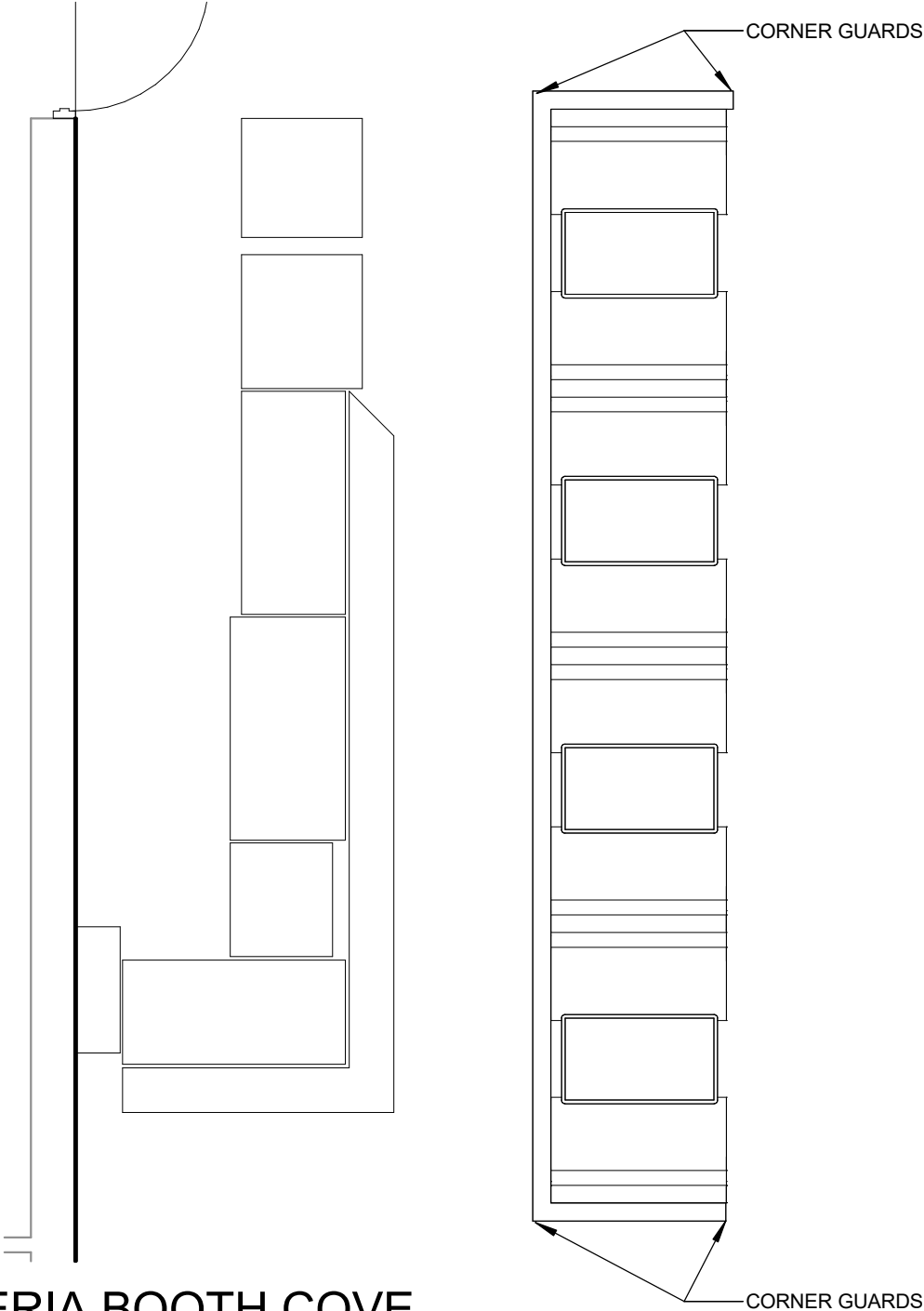
END OF SECTION

This page intentionally left blank

1

MS CAFETERIA BOOTH COVE

SCALE: 1/4" = 1'-0"



Designed By
MHK
Scale
1/4" = 1'-0"

Checked By
BJL
Date
10/6/2023

Reference No.
Project Number
2019-011 PH2

MS CAFETERIA BOOTH COVE

PORT JERVIS CITY SCHOOL DISTRICT
ALTERATIONS TO:
PORT JERVIS MIDDLE SCHOOL/HIGH SCHOOL
Port Jervis - Orange County - New York

Sheet No.

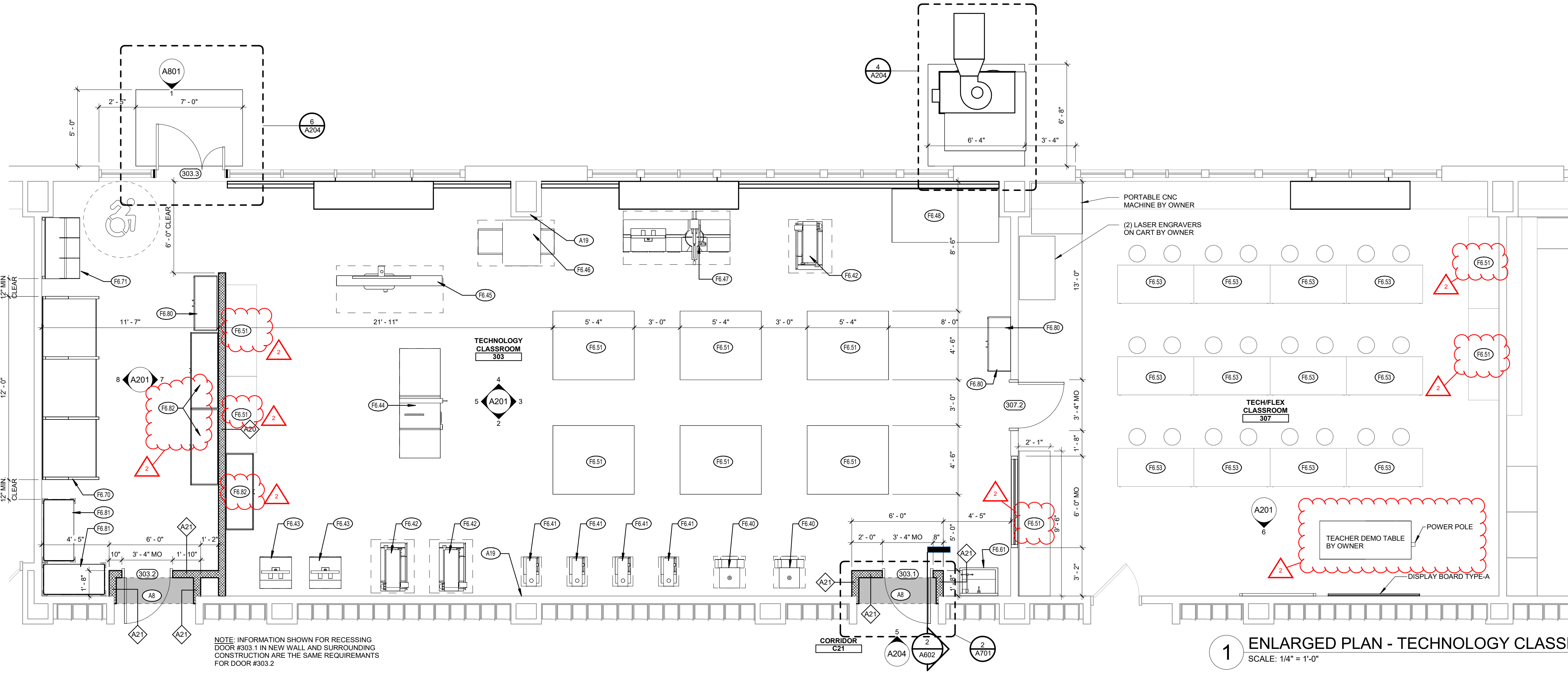
AD2-A1

BCA
ARCHITECTS
ENGINEERS

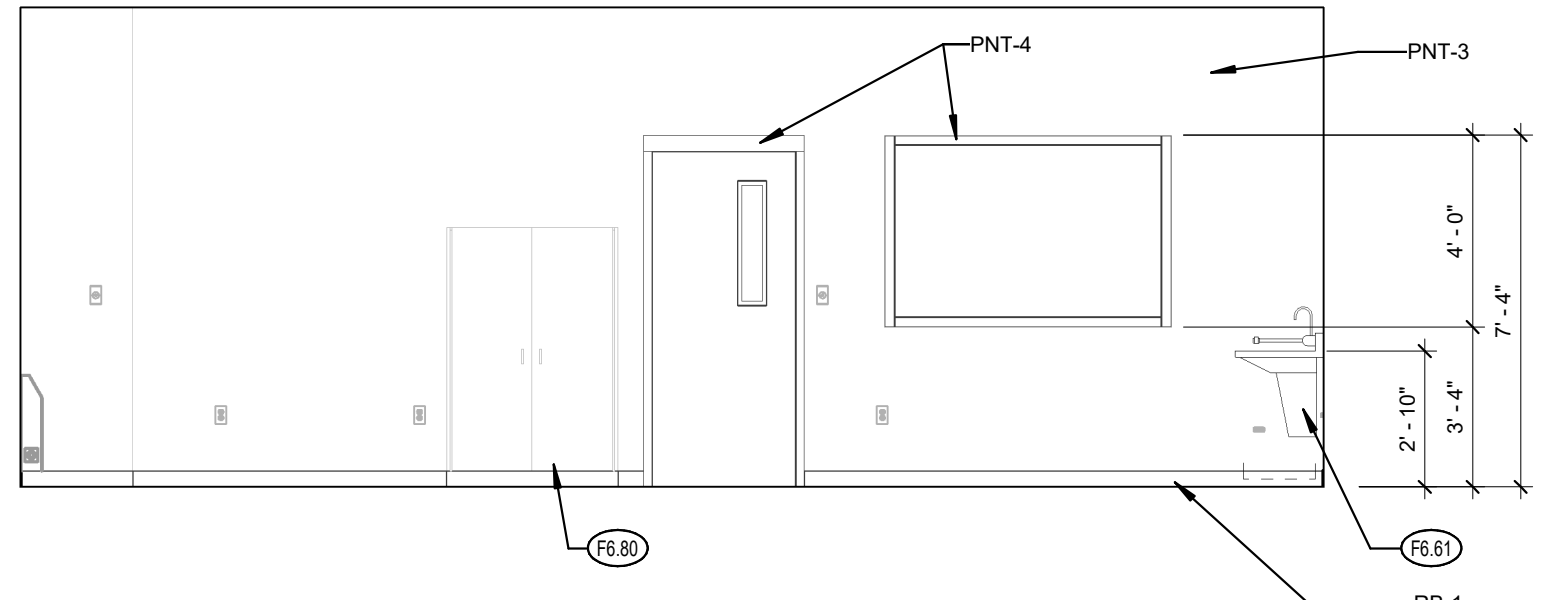
BCA Architects & Engineers
Watertown | Ithaca | Saratoga Springs
Rochester | Troy | Binghamton

WWW.THEBCGROUP.COM

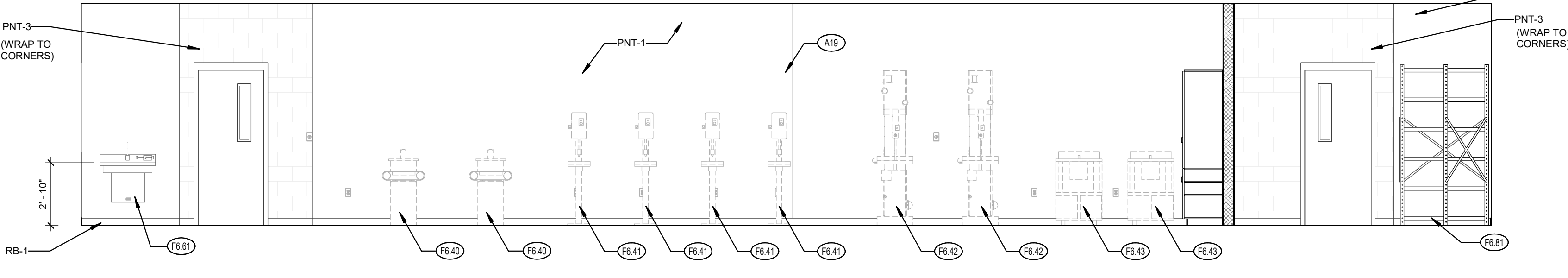
COPYRIGHT © 2022 - BCA ARCHITECTS & ENGINEERS, WARNING - IT
IS A VIOLATION OF THE NEW YORK STATE EDUCATION LAW FOR ANY UNAUTHORIZED ALTERATIONS TO THIS DOCUMENT AS PER ARTICLE 145 AND 147.



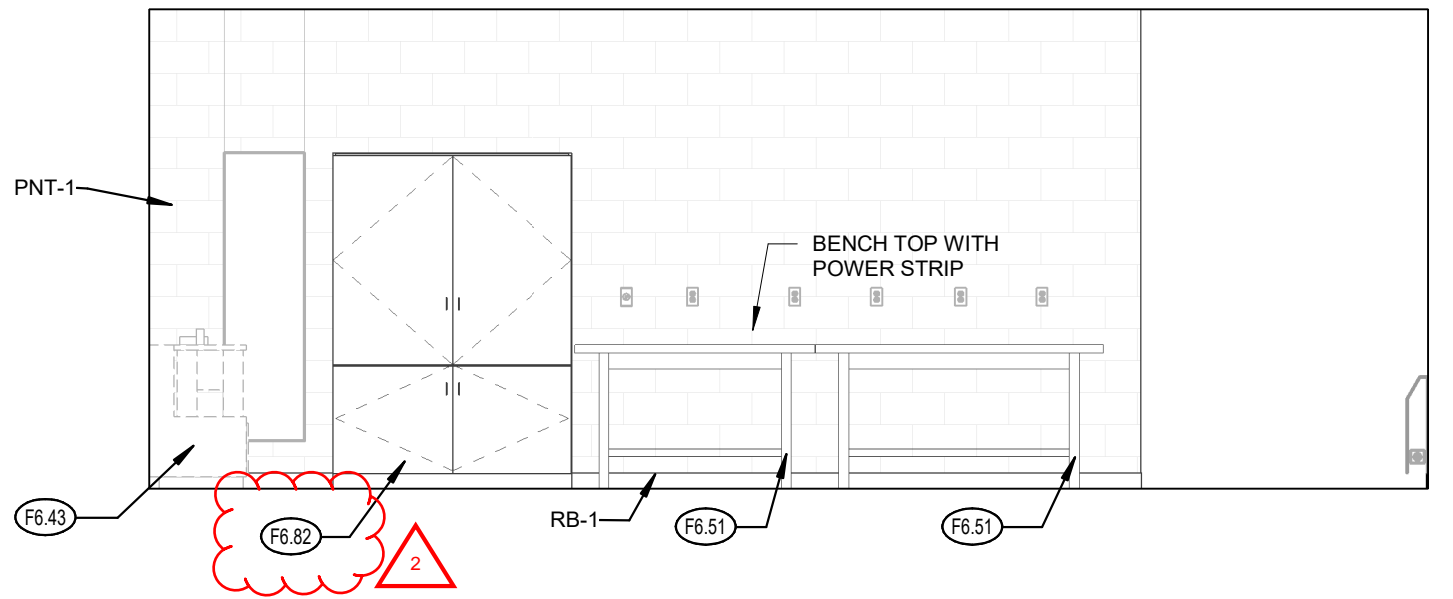
1 ENLARGED PLAN - TECHNOLOGY CLASSROOM
SCALE: 1/4" = 1'-0"



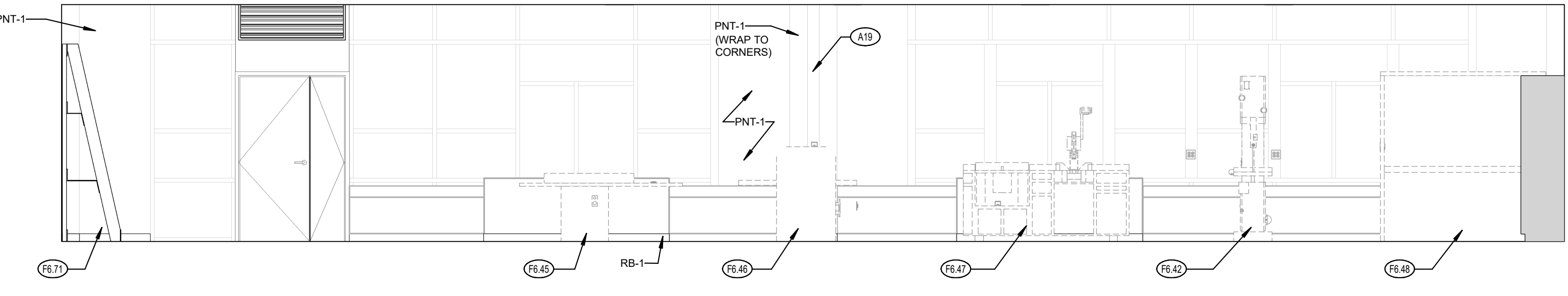
3 INT ELEV - TECH NORTH
SCALE: 1/4" = 1'-0"



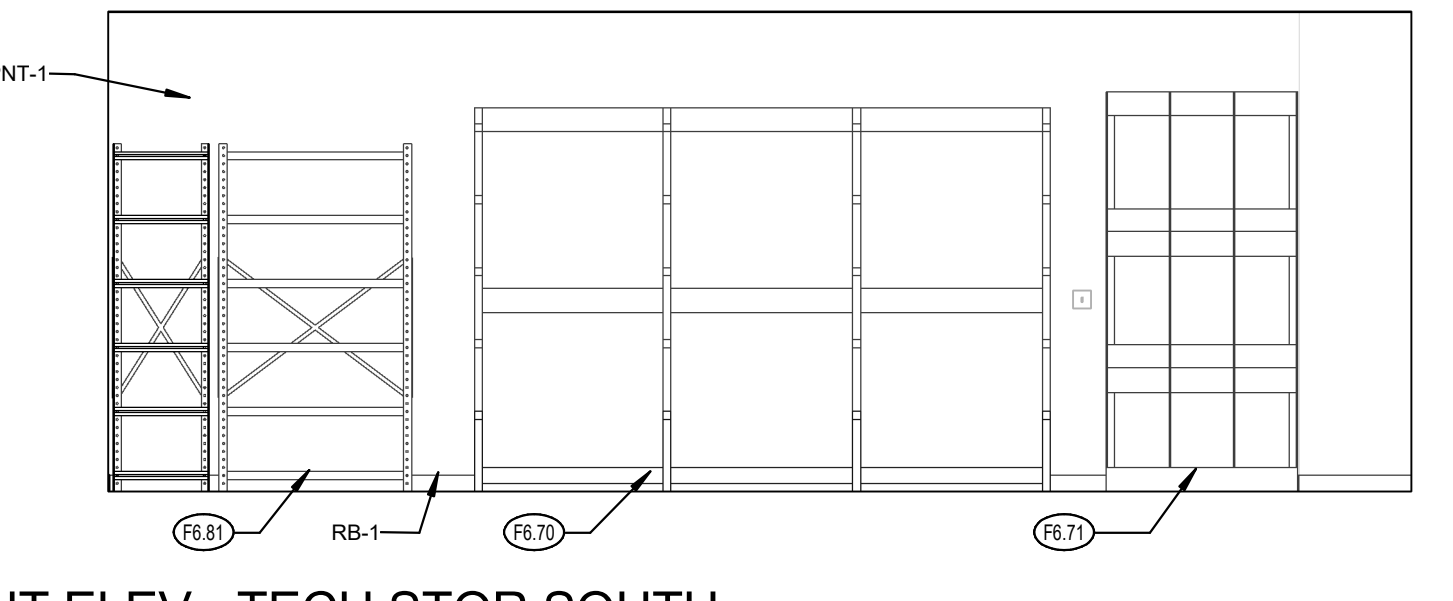
2 INT ELEV - TECH EAST
SCALE: 1/4" = 1'-0"



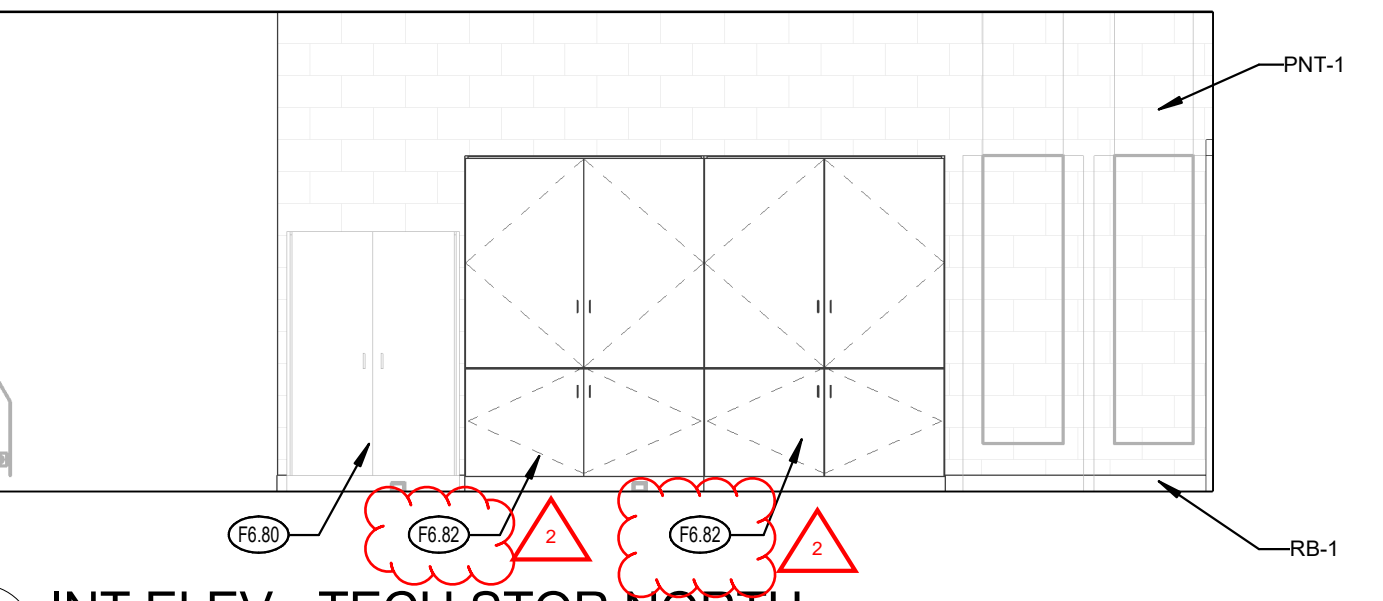
5 INT ELEV - TECH SOUTH
SCALE: 1/4" = 1'-0"



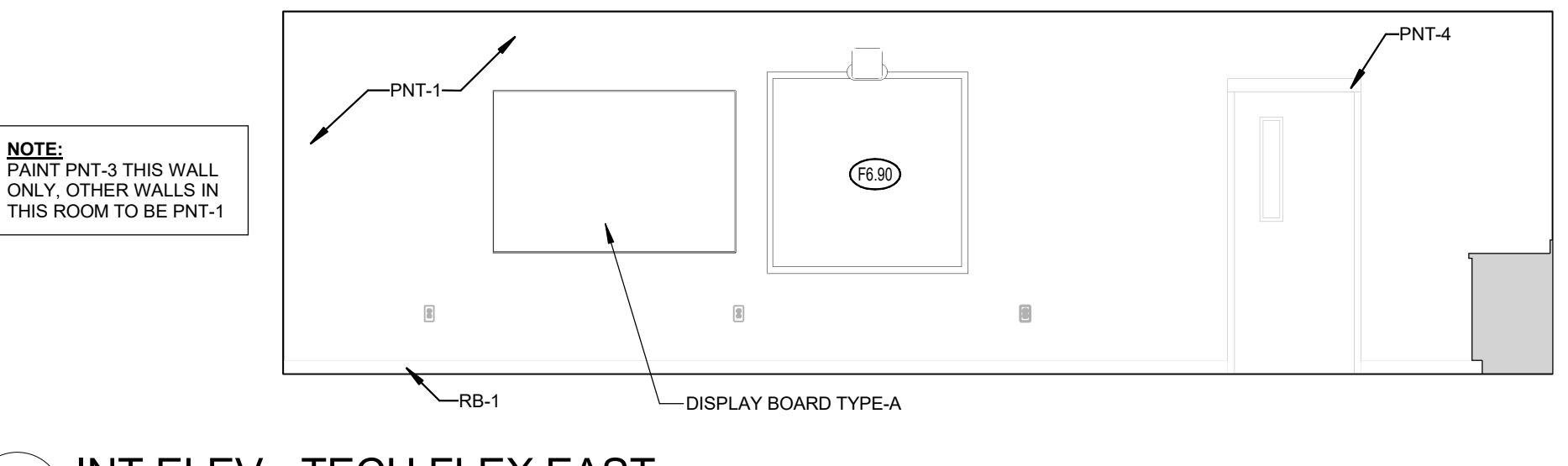
4 INT ELEV - TECH WEST
SCALE: 1/4" = 1'-0"



8 INT ELEV - TECH STOR SOUTH
SCALE: 1/4" = 1'-0"



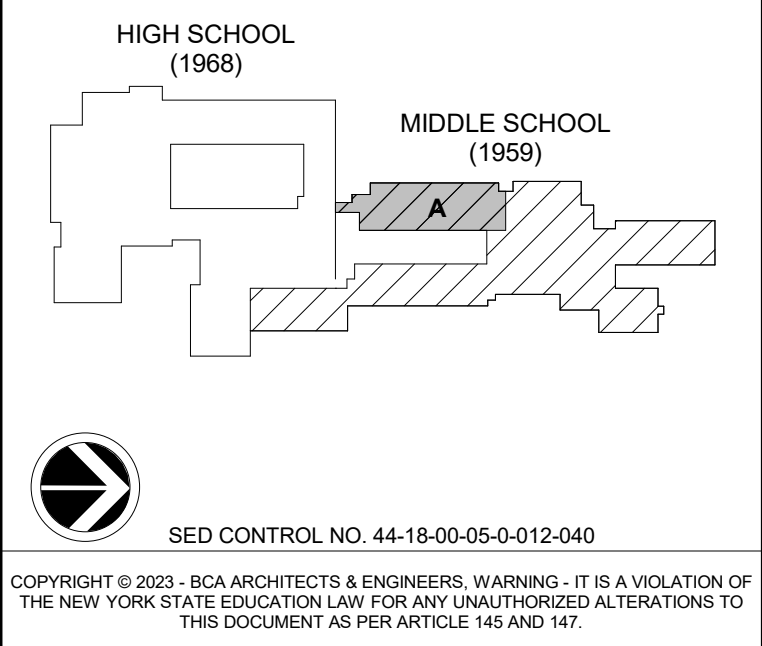
7 INT ELEV - TECH STOR NORTH
SCALE: 1/4" = 1'-0"



6 INT ELEV - TECH FLEX EAST
SCALE: 1/4" = 1'-0"

GENERAL ENLARGED PLAN / INT ELEVATION NOTES:	
A.	REFER TO DRAWING AS001 FOR PARTITION TYPES.
B.	ALL DOOR ROUGH OPENINGS (AT HINGE SIDE) TO BE 4" FROM ADJACENT PERPENDICULAR WALL, TYPICAL UNO.
C.	MECHANICAL, PLUMBING AND ELECTRICAL COMPONENTS SHOWN ON FLOOR PLANS ARE SHOWN FOR REFERENCE PURPOSES ONLY. REFER TO MEP DRAWINGS FOR ADDITIONAL INFORMATION.
D.	ALL FIXED CASEWORK BY GC, AND ALL LOOSE FURNITURE BY OWNER, TYP.
E.	REFER TO FINISH PLAN FOR ALL FINISHES AND FLOOR PATTERNS.
F.	AT ALL LOCATIONS WHERE OPENINGS ARE CUT INTO EXISTING WALLS, PATCH AND MATCH ALL EXPOSED SURFACES TO MATCH EXISTING WALLS, FLOORS AND CEILINGS FOR A SMOOTH AND UNIFORM FINISH. REFER TO FINISH PLANS AND THE SPECIFICATIONS FOR CUTTING AND PATCHING FOR MORE INFORMATION.
G.	REFER TO SPECIFICATIONS FOR REQUIREMENTS FOR VINYL WALL GRAPHICS. USE THE ELEVATIONS SHOWN FOR BASIC SIZES, HEIGHTS AND GRAPHIC ELEMENTS REQUIRED. MAXIMUM WIDTH OF WAVE LINES TO BE 1", TAPERED AT THE ENDS WHERE SHOWN.
KEYNOTES	
A#	
A8	INFILL FLOOR AS REQUIRED TO ALIGN EXISTING FINISH SURFACE WITH NEW FINISHES AS SCHEDULED ON FINISH PLANS.
A19	IN AREA OF WALL REMOVAL, CONFIRM CONDITION OF WALL, INTERSECTION AND SMOOTH SURFACE TO ADJACENT WALL IN PREPARATION FOR FINISH AS NOTED.
FB.40	BELT SANDER BY OWNER
FB.41	DRILL PRESS BY OWNER
FB.42	BAND SAW BY OWNER
FB.43	ROUTER BY OWNER
FB.44	TABLE SAW BY OWNER
FB.45	JOINTER BY OWNER
FB.46	PLANER BY OWNER
FB.47	COMPOUND MITRE SAW BY OWNER
FB.48	SPRAY BOOTH BY OWNER
FB.51	MOVEABLE WORK BENCH PROVIDED BY OWNER
FB.53	WORK BENCH 30"W x 60" x 34"H - TECH-FLEX STUDENT WORK TABLE (BY OWNER)
FB.61	HANDWASH SINK WITH EYEWASH - 22" X 30"
FB.70	CANTILEVERED HORIZONTAL LUMBER RACK - 144" X 42" X 96"
FB.71	VERTICAL LUMBER RACK - 48" X 30" X 100"
FB.80	FLAMMABLE LIQUIDS STORAGE CABINET - 43" X 18" X 65" (BY OWNER)
FB.81	HEAVY-DUTY STORAGE SHELVING UNIT - 48" X 24" X 84"
FB.82	TALL WOOD TOOL STORAGE BY OWNER
FB.90	WALL MOUNTED SMART BOARD
PNT-1	PAINT PNT-1
PNT-3	PAINT PNT-3
PNT-4	PAINT PNT-4
RB-1	RUBBER BASE TYPE 1

KEY PLAN:



BCA Architects & Engineers
Ithaca | Saratoga Springs | Watertown | Rochester
WWW.THEBCAGROUP.COM

BCA
ARCHITECTS
ENGINEERS

Port
PRIDE

PORT JERVIS CITY SCHOOL DISTRICT
ALTERATIONS TO:
PORT JERVIS MIDDLE SCHOOL / HIGH SCHOOL
Port Jervis - Orange County - New York

REV	DATE	DESCRIPTION
2	11/10/2023	ADDENDUM NO. 2
DRAWN BY WF		PROJECT NUMBER 2019-011 PH2
CHECKED BY BJL		DATE 10/6/2023

ENLARGED PLAN & INTERIOR
ELEVATIONS - TECHNOLOGY ROOM

BUILDING
MS
SHEET NUMBER
A201