

DRAWING LIST:	
E-1	ELECTRICAL SITE PLAN
E-2	ELECTRICAL PANEL SCHEDULE
E-3	FIRST FLOOR POWER PLAN
E-4	MEZZANINE FLOOR POWER PLAN
E-5	ROOF POWER PLAN
E-6	FIRST FLOOR LIGHTING PLAN
E-7	SECOND FLOOR LIGHTING PLAN
E-8	FIRST FLOOR MISCELLANEOUS SYSTEMS
E-9	MEZZANINE MISCELLANEOUS SYSTEMS
E-10	MISCELLANEOUS RISER DIAGRAMS
E-11	MISCELLANEOUS RISER DIAGRAMS CONT'D

**SCOPE OF WORK:**

THIS INSTALLATION SHALL BE IN ACCORDANCE WITH NFPA 70, NYS ENERGY CONSERVATION CODE, NYS BUILDING CODE AND ANY OTHER JURISDICTION HAVING AUTHORITY. ELECTRICIAN SHALL SECURE ALL PERMITS, CERTIFICATES, LICENSES, ETC. AND PROVIDE ALL REQUIRED LABOR, MATERIALS, EQUIPMENT AND SERVICES NECESSARY FOR A COMPLETE AND SAFE INSTALLATION OF ELECTRICAL ITEMS AS INDICATED ON THE DRAWINGS, INCLUDING BUT NOT LIMITED TO THE FOLLOWING:

- APPLY FOR AND OBTAIN ELECTRICAL PERMITS AS REQUIRED FOR THE PROJECT.
- RECONNECT ALL EXISTING TO REMAIN FEEDERS AND BRANCH CIRCUITS.
- REPLACE THE EXISTING SERVICE RATED MDP WITH A NEW 200A/3PH 60 CIRCUIT MDP WITH SERVICE RATED MAIN BREAKER.
- PROVIDE AND INSTALL ALL RACEWAYS, PANEL BOARD, WIRING, JUNCTION BOXES, DISCONNECTS, ETC.
- PROVIDE AND INSTALL ALL FIXTURES, LAMPS, CIRCUITS AND CONDUITS.
- PROVIDE AND INSTALL WALL SWITCHES, RECEPTACLES, LIGHTING CONTROLS, TIME CLOCKS, INTERIOR, EXTERIOR AND SITE LIGHTING.
- PROVIDE ALL PRIMARY POWER WIRING IN CONDUIT FOR MECHANICAL EQUIPMENT, PLUMBING EQUIPMENT, FIRE ALARM, FIRE SPRINKLER AND CONTROLS. COORDINATE WITH TRADE CONTRACTORS.
- PROVIDE CONTROL WIRING CONDUIT FOR MECHANICAL EQUIPMENT, PLUMBING EQUIPMENT AND CONTROLS. COORDINATE WITH TRADE CONTRACTORS.
- PROVIDE AND INSTALL ALL INDICATED MISCELLANEOUS SYSTEMS AS SPECIFIED WHICH INCLUDES ALL WIRING AND TERMINATION DEVICE OR FIXTURE.

DATE: 7.18.22

ISSUE: FOR BID

SEAL:

SENDELSKI ARCHITECTS PC

ARCHITECTS - PLANNERS

215 ROANOKE AVENUE  
RIVERHEAD, NY 11901  
(631) 727-5352

9 SELENA COURT  
WALDEN, NY 12586  
(845) 275-8859

TAPPAN FIRE DISTRICT  
300 WESTERN HWY S,  
TAPPAN NY, 10983

ELECTRICAL SITE PLAN

PROJECT #: 21-08

DRAWN BY:

CAD FILE: 21-08/P:/BID

DRAWING#:

E-1

DATE: 7.18.22  
ISSUE: FOR BID

SEAL:

SENDEWSKI ARCHITECTS PC  
ARCHITECTS - PLANNERS

215 ROANOKE AVENUE  
RIVERHEAD, NY 11901  
(631) 727-5352

9 SELENA COURT  
WALDEN, NY 12586  
(845) 275-8859

TAPPAN FIRE DISTRICT  
300 WESTERN HWY S,  
TAPPAN NY, 10983

ELECTRICAL PANEL SCHEDULES

PROJECT #: 21-08

DRAWN BY:

CAD FILE: 21-08/P:/BID

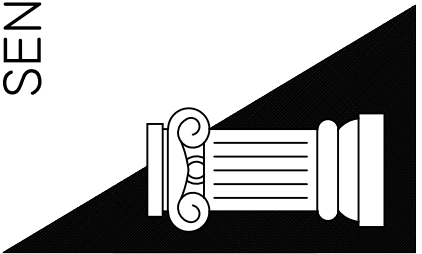
DRAWING#:

E-2

SCHEDULE FOR: PANEL PP2														
Voltage: 208 / 120 V			MLO		X Equip. Ground Bus		Poles: 60		Min CB IC: 65,000 AIC					
Main Bus: 225 A			X MCB		Isol. Ground Bus		RECESSED		Comments:					
Ckt #	Serves	Load VA	Breaker P	Trip	Minimum Branch Circuit	Phase			Minimum Branch Circuit	Breaker Trip	P	Load VA	Serves	Ckt #
						A	B	C						
1	AIR COMPRESSOR	1296	3	30	4#8,#10G,1" C	4364			4#8,#10G,1-1/4" C	40	2	3068	HEAT PUMP	2
3		1296					4364					3068	HP-1	4
5		1296						2496	4#12,#12G,3/4" C	20	1	1200	COMP AIR DRYER	6
7	AIR PURIFIER	1035	2	15	4#12,#12G,3/4" C	3531			4#10,#10G,1" C	25	2	2496	HEAT PUMP	8
9		1035					3531					2496	HP-2	10
11	APP BAY EXHAUST	728	2	15	4#12,#12G,3/4" C			1478	2#12,#12G,3/4" C	15	1	750	HOSE REELS	12
13	EF-2	728				1478			2#12,#12G,3/4" C	15	1	750	HOSE REELS	14
15	UNIT HEATER UH-1,2	874	1	15	2#12,#12G,3/4" C		1624		2#12,#12G,3/4" C	15	1	750	HOSE REELS	16
17	UNIT HEATER UH-3,4	874	1	15	2#12,#12G,3/4" C			1624	2#12,#12G,3/4" C	15	1	750	HOSE REELS	18
19	WH-1	1000	1	20	2#12,#12G,3/4" C	1750			2#12,#12G,3/4" C	15	1	750	HOSE REELS	20
21	RED ALERT	100	1	15	2#12,#12G,3/4" C		1300		2#12,#12G,3/4" C	15	1	1200	GEAR DRYER	22
23	CO/NO2 CONTROLLER	500	1	15	2#12,#12G,3/4" C			1700	2#12,#12G,3/4" C	15	1	1200	GEAR DRYER	24
25	HOSE REEL	750	1	15	2#12,#12G,3/4" C	1711			4#12,#12G,3/4" C	20	3	961	GEAR WASHER	26
27	HOSE REEL	750	1	15	2#12,#12G,3/4" C		1711					961		28
29	GARAGE DOOR	750	2	15	2#12,#12G,3/4" C			1711				961		30
31		750				1250			2#12,#12G,3/4" C	15	1	500	LOCKER POWER	32
33	GARAGE DOOR	750	2	15	2#12,#12G,3/4" C		1250		2#12,#12G,3/4" C	15	1	500	LOCKER POWER	34
35		750						1110	2#12,#12G,3/4" C	20	1	360	DISPATCH REC	36
37	GARAGE DOOR	750	2	15	2#12,#12G,3/4" C	1110			2#12,#12G,3/4" C	20	1	360	DISPATCH REC	38
39		750					1110		2#12,#12G,3/4" C	20	1	360	APP BAY REC	40
41	GARAGE DOOR	750	2	15	2#12,#12G,3/4" C			1650	2#12,#12G,3/4" C	20	1	900	LTG	42
43		750						1650	2#12,#12G,3/4" C	20	1	900	LTG	44
45	REC	360	1	20	2#12,#12G,3/4" C		1260		2#12,#12G,3/4" C	20	1	900	EXT LTG	46
47	REC	360	1	20	2#12,#12G,3/4" C			1360	2#12,#12G,3/4" C	20	1	1000	BAY LTG	48
49	REC	180	1	20	2#12,#12G,3/4" C	180								50
51	REC	180	1	20	2#12,#12G,3/4" C		180							52
53								0						54
55						0								56
57							0							58
59								0						60
Total Connected Load (VA)						46483	17024	16330	13129	VA per phase				
							141.9	136.1	109.4	Amps per phase		129	Total Connected Load (Amps)	

SEAL:

SENDEWSKI ARCHITECTS PC  
ARCHITECTS - PLANNERS  
215 ROANOKE AVENUE  
RIVERHEAD, NY 11901  
(631) 727-5352  
9 SELENA COURT  
WALDEN, NY 12586  
(845) 275-8859



TAPPAN FIRE DISTRICT  
300 WESTERN HWY S,  
TAPPAN NY, 10983

FIRST FLOOR  
POWER PLAN

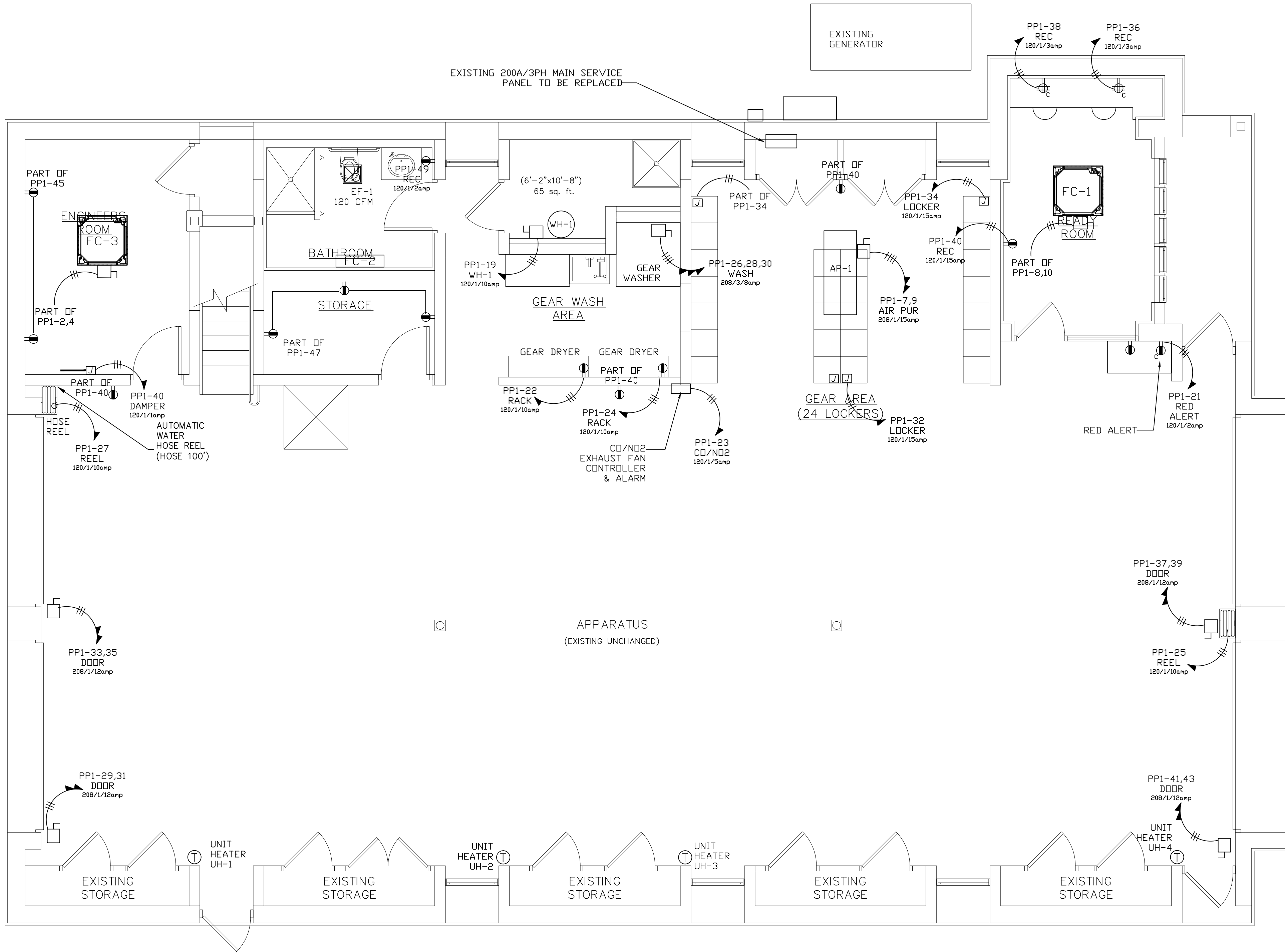
PROJECT #: 21-08

DRAWN BY:

CAD FILE: 21-08/P-/BID

DRAWING#:

E-3



SYMBOL LIST	
SYMBOL	DESCRIPTION
S o	SINGLE POLE LIGHT SWITCH (LOW VOLTAGE) o = INDICATES LIGHTS CONTROLLED (MOUNTED AT 48" TO TOP OF SWITCH UNLESS OTHERWISE NOTED)
•	DUPLEX RECEPTACLE GROUNDING TYPE, (MOUNTED AT 24" TO TOP OF RECP. UNLESS OTHERWISE NOTED) • DUPLEX RECEPTACLE EQUIPPED WITH USB CHARGING PORT.
⏏	DUPLEX RECEPTACLE (ORANGE) ISOLATED GROUNDING TYPE (COMPUTER TYPE)
⏏	QUAD RECEPTACLE GROUNDING TYPE, (MOUNTED (MOUNTED AT 24" TO TOP OF RECP. UNLESS OTHERWISE NOTED)
⏏	DUPLEX RECEPTACLE (GROUND FAULT INTERUPTER TYPE) c = DENOTES COUNTER HEIGHT (VERIFY HEIGHT WITH ARCHITECT.)
↶	HOMERUN TO DESIGNATED PANEL OR BOARD SLASHES INDICATE NUMBER OF WIRES FOR EACH CIRCUIT. ARROWS INDICATE NUMBER OF CIRCUITS.
⏏	DISCONNECT SWITCH FUSED (SIZE AS INDICATED)
Ⓜ	JUNCTION BOX (SIZE AS REQUIRED)
HD	ELECTRIC HAND DRYER EXCELERATOR TYPE # H-1927W SUPPLIED AND INSTALLED BY ELECTRICAL CNTR.

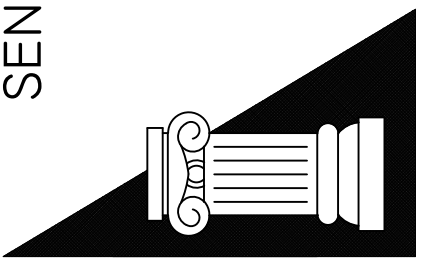
- PLAN NOTES:
1. REMOVE EXISTING POWER PANELS FROM MAIN SERVICE AND ALL ASSOCIATED WIRING AND CONDUIT. PROVIDE NEW POWER PANEL AND REFEED EXISTING CIRCUITS AND SUB PANELS TO REMAIN.
  2. NEW FEEDERS FOR ALL EQUIPMENT SHALL BE IN CONDUIT.
  3. ALL RECEPTACLES SHALL BE GFI. ALL WIRING SHALL BE IN CONDUIT.
  4. BATHROOM EXHAUST FANS SHALL BE INTERLOCKED WITH THE LIGHTING. FAN SHALL REMAIN ON FOR 15 MINUTES AFTER LIGHTS ARE SHUT OFF.
  5. VERIFY RECEPTACLE LOCATIONS, TYPES AND HEIGHTS WITH ARCHITECT PRIOR TO INSTALLATION.
  6. ALL PIPING SHALL BE AT CEILING DOWN TO DEVICE OR FIXTURE UNLESS OTHERWISE NOTED.
  7. CONNECTIONS TO ALL EQUIPMENT SHALL BE AS PER THE MANUFACTURER'S INSTALLATION MANUAL.
  8. CIRCUIT DESIGNATIONS ARE FOR REFERENCE ONLY. ELECTRICIAN SHALL VERIFY CIRCUIT LOADS OF LIGHTING FIXTURES, POWER AND EQUIPMENT BEFORE CONNECTING NEW CIRCUITS TO NEW PANELS. ELECTRICIAN SHALL BE RESPONSIBLE FOR BALANCING LEGS.
  9. ALL EQUIPMENT POWER AND CONTROL WIRING SHALL BE IN METAL CONDUIT.

FIRST FLOOR POWER PLAN

SCALE: 1/4" = 1'-0"

SEAL:

SENDEWSKI ARCHITECTS PC  
ARCHITECTS - PLANNERS  
215 ROANOKE AVENUE  
RIVERHEAD, NY 11901  
(631) 727-5352  
9 SELENA COURT  
WALDEN, NY 12586  
(845) 275-8859



TAPPAN FIRE DISTRICT  
300 WESTERN HWY S,  
TAPPAN NY, 10983

MEZZANINE POWER PLAN

PROJECT #: 21-08

DRAWN BY:

CAD FILE: 21-08/P-/BID

DRAWING#:

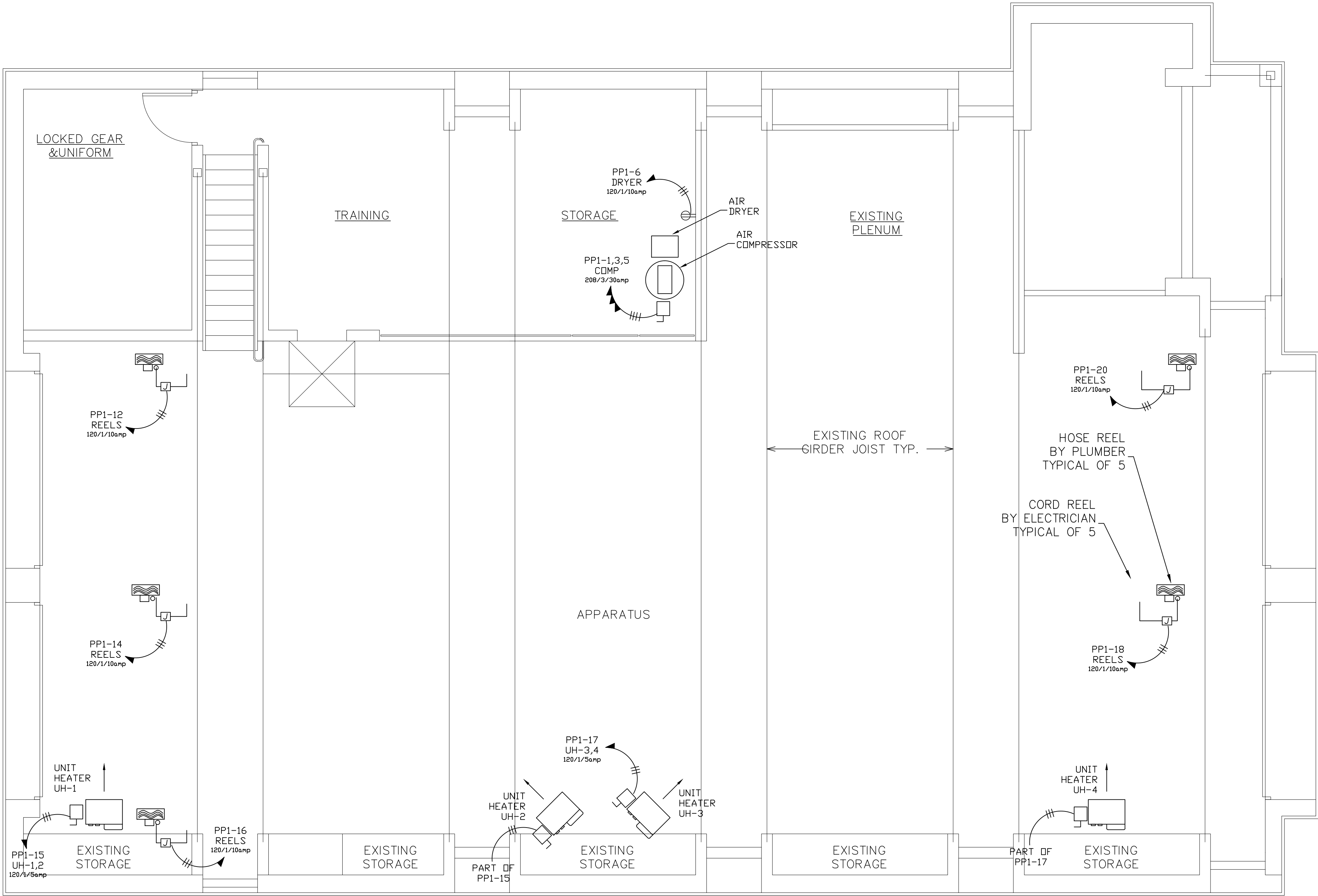
E-4

SYMBOL LIST	
SYMBOL	DESCRIPTION
	SINGLE POLE LIGHT SWITCH(LOW VOLTAGE) s = INDICATES LIGHTS CONTROLLED (MOUNTED AT 48" TO TOP OF SWITCH UNLESS OTHERWISE NOTED)
	DUPLEX RECEPTACLE GROUNDING TYPE, (MOUNTED AT 24" TO TOP OF RECP. UNLESS OTHERWISE NOTED) • DUPLEX RECEPTACLE EQUIPTED WITH USB CHARGING PORT,
	DUPLEX RECEPTACLE (ORANGE) ISOLATED GROUNDING TYPE (COMPUTER TYPE)
	QUAD RECEPTACLE GROUNDING TYPE, (MOUNTED (MOUNTED AT 24" TO TOP OF RECP. UNLESS OTHERWISE NOTED)
	DUPLEX RECEPTACLE (GROUND FAULT INTERUPTER TYPE) c = DENOTES COUNTER HEIGHT (VERIFY HEIGHT WITH ARCHITECT.)
	HOMERUN TO DESIGNATED PANEL OR BOARD SLASHES INDICATE NUMBER OF WIRES FOR EACH CIRCUIT. ARROWS INDICATE NUMBER OF CIRCUITS.
	DISCONNECT SWITCH FUSED (SIZE AS INDICATED)
	JUNCTION BOX (SIZE AS REQUIRED)
HD	ELECTRIC HAND DRYER EXCELERATOR TYPE # H-1927W SUPPLIED AND INSTALLED BY ELECTRICAL CNTR.

PLAN NOTES:  
1. REMOVE EXISTING POWER PANELS, MAIN SERVICE, TRANSFER SWITCH  
AND ALL ASSOCIATED WIRING AND CONDUIT. PROVIDE NEW POWER PANEL  
AND  
REFEED EXISTING CIRCUITS TO REMAIN.  
2. NEW ELECTRIC SERVICE AND FEEDERS FOR ALL EQUIPMENT IN THE  
ELECTRICAL RDM, SHALL BE IN CONDUIT AND SHALL BE RUN UNDER  
THE SLAB.  
3. ALL CELLAR RECEPTACLES SHALL BE GFI. ALL WIRING SHALL BE IN  
CONDUIT.  
4. BATHROOM EXHAUST FANS SHALL BE INTERLOCKED WITH THE LIGHTING.  
FAN SHALL REMAIN ON FOR 15 MINUTES AFTER LIGHTS ARE SHUT OFF.  
5. VERIFY RECEPTACLE LOCATIONS, TYPES AND HEIGHTS WITH  
ARCHITECT PRIOR TO INSTALLATION.  
6. ALL PIPING SHALL BE AT CEILING DOWN TO DEVICE OR FIXTURE  
UNLESS OTHERWISE NOTED.  
7. CONNECTIONS TO ALL EQUIPMENT SHALL BE AS PER THE  
MANUFACTURER'S INSTALLATION MANUAL.  
8. CIRCUIT DESIGNATIONS ARE FOR REFERENCE ONLY. ELECTRICIAN  
SHALL VERIFY CIRCUIT LOADS OF LIGHTING FIXTURES, POWER AND  
EQUIPMENT BEFORE CONNECTING NEW CIRCUITS TO NEW PANELS.  
ELECTRICIAN SHALL BE RESPONSIBLE FOR BALANCING LEGS.  
9. ALL EQUIPMENT POWER AND CONTROL WIRING SHALL BE IN METAL  
CONDUIT.

HR - 1 CEILING MOUNTED CORD REELS  
DESCRIPTION: HEAVY DUTY REEL WITH INDUSTRIAL DUTY CHANNEL FRAME CONSTRUCTION.  
CHAIN AND SPROCKET DRIVE POWERED BY 1/2 HP 115V ELECTRIC MOTOR  
& OPTIONAL CHAIN CLUTCH REDUCTION UNIT, AND AUXILIARY CRANK  
REWIND. 1/2" NPT BRONZE INLET & OUTLET. REEL SHALL BE CAPABLE OF  
HANDLING 100' OF HOSE. HANNAY MODEL NO. ECR1614-17-18 OR EQUAL  
CONTROLLER SHALL BE PURCHASED AND INSTALLED BY ELECTRICAL CONTRACTOR.  
Wired by electrical contractor.

CORD. 100' OF 10/3 CORD WITH THREE END TERMINAL



MEZZANINE POWER PLAN

SCALE: 1/4" = 1'-0"

SEAL:

SENDELSKI ARCHITECTS PC  
ARCHITECTS - PLANNERS

215 ROANOKE AVENUE  
RIVERHEAD, NY 11901  
(631) 727-5352

9 SELENA COURT  
WALDEN, NY 12586  
(845) 275-8859

TAPPAN FIRE DISTRICT  
300 WESTERN HWY S,  
TAPPAN NY, 10983

ROOF POWER PLAN

PROJECT #: 21-08

DRAWN BY:

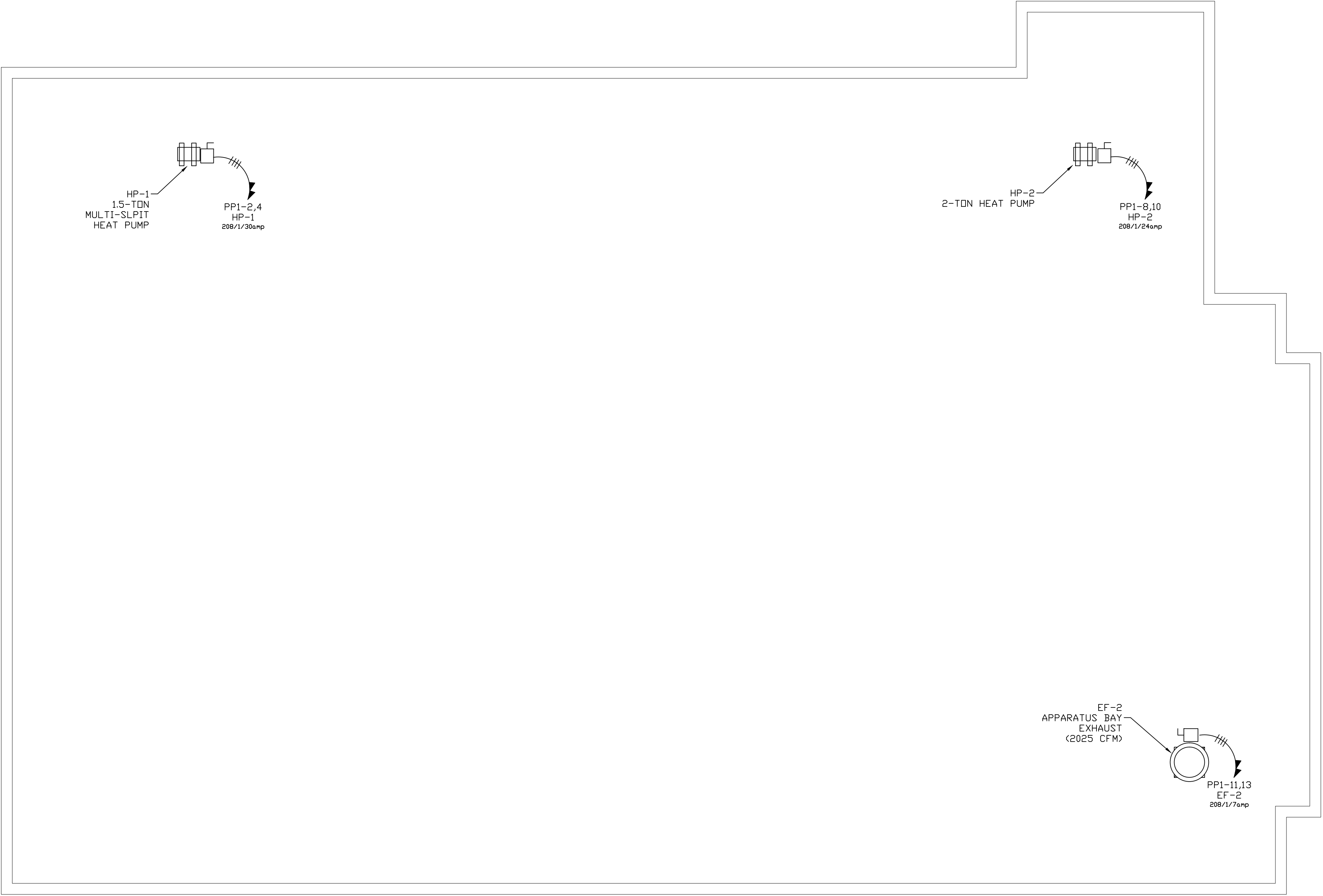
CAD FILE: 21-08/P:/BID

DRAWING#:

E-5

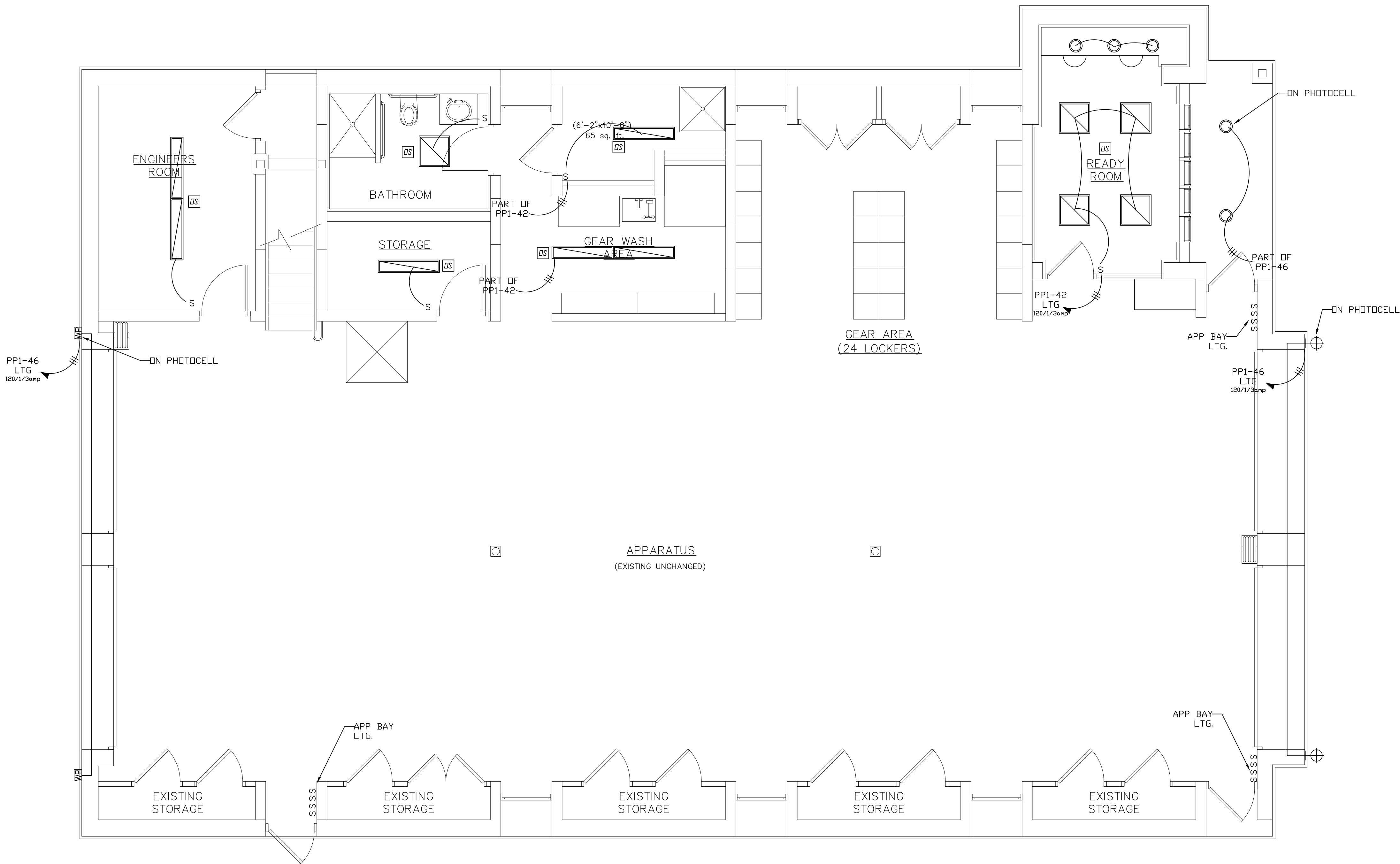
SYMBOL LIST	
SYMBOL	DESCRIPTION
S a	SINGLE POLE LIGHT SWITCH a = INDICATES LIGHTS CONTROLLED (MOUNTED AT 48" TO TOP OF SWITCH UNLESS OTHERWISE NOTED)
S 3	THREE WAY SWITCH a = INDICATES LIGHTS CONTROLLED (MOUNTED AT 48" TO TOP OF SWITCH UNLESS OTHERWISE NOTED)
	DUPLEX RECEPTACLE GROUNDING TYPE, (MOUNTED AT 24" TO TOP OF RECP. UNLESS OTHERWISE NOTED) • DUPLEX RECEPTACLE EQUIPTED WITH USB CHARGING PORT,
	DUPLEX RECEPTACLE (ORANGE) ISOLATED GROUNDING TYPE (COMPUTER TYPE)
	QUAD RECEPTACLE GROUNDING TYPE, (MOUNTED (MOUNTED AT 24" TO TOP OF RECP. UNLESS OTHERWISE NOTED)
	DUPLEX RECEPTACLE (GROUND FAULT INTERUPTER TYPE) c = DENOTES COUNTER HEIGHT (VERIFY HEIGHT WITH ARCHITECT.)
	HOMERUN TO DESIGNATED PANEL OR BOARD SLASHES INDICATE NUMBER OF WIRES FOR EACH CIRCUIT. ARROWS INDICATE NUMBER OF CIRCUITS.
	DISCONNECT SWITCH FUSED (SIZE AS INDICATED)
	JUNCTION BOX (SIZE AS REQUIRED)
SWT	WIND-UP TIMER SWITCH
	COMBO STARTER DISC SW.
	HORSEPOWER RATED SWITCH
HD	ELECTRIC HAND DRYER EXCELERATOR TYPE # H-1927W SUPPLIED AND INSTALLED BY ELECTRICAL CNTR.

PLAN NOTES:  
1. REMOVE EXISTING POWER PANELS, MAIN SERVICE, TRANSFER SWITCH AND ALL ASSOCIATED WIRING AND CONDUIT. PROVIDE NEW POWER PANEL AND REFEED EXISTING CIRCUITS TO REMAIN.  
2. NEW ELECTRIC SERVICE AND FEEDERS FOR ALL EQUIPMENT IN THE ELECTRICAL RDM, SHALL BE IN CONDUIT AND SHALL BE RUN UNDER THE SLAB.  
3. ALL CELLAR RECEPTACLES SHALL BE GFI. ALL WIRING SHALL BE IN CONDUIT.  
4. BATHROOM EXHAUST FANS SHALL BE INTERLOCKED WITH THE LIGHTING. FAN SHALL REMAIN ON FOR 15 MINUTES AFTER LIGHTS ARE SHUT OFF.  
5. VERIFY RECEPTACLE LOCATIONS, TYPES AND HEIGHTS WITH ARCHITECT PRIOR TO INSTALLATION.  
6. ALL PIPING SHALL BE AT CEILING DOWN TO DEVICE OR FIXTURE UNLESS OTHERWISE NOTED.  
7. CONNECTIONS TO ALL EQUIPMENT SHALL BE AS PER THE MANUFACTURER'S INSTALLATION MANUAL.  
8. CIRCUIT DESIGNATIONS ARE FOR REFERENCE ONLY. ELECTRICIAN SHALL VERIFY CIRCUIT LOADS OF LIGHTING FIXTURES, POWER AND EQUIPMENT BEFORE CONNECTING NEW CIRCUITS TO NEW PANELS. ELECTRICIAN SHALL BE RESPONSIBLE FOR BALANCING LEGS.  
9. ALL EQUIPMENT POWER AND CONTROL WIRING SHALL BE IN METAL CONDUIT.



ROOF POWER PLAN

SCALE: 1/4" = 1'-0"



GENERAL NOTES:  
1. WHERE EXPOSED, ALL WIRING SHALL BE IN CONDUIT.  
2. ALL PIPING SHALL BE AT CEILING DOWN TO DEVICE OR FIXTURE UNLESS OTHERWISE NOTED.  
3. VERIFY ALL FINAL SWITCH LOCATIONS & TYPE WITH ARCHITECT PRIOR TO INSTALLATION.  
4. VERIFY FIXTURE TYPES WITH ARCHITECT PRIOR TO INSTALLATION. CONNECTIONS SHALL BE AS PER MANUFACTURERS REQUIREMENTS.  
5. LED STRIP LIGHTING SHALL BE INSTALLED AS PER THE MANUFACTURER'S INSTALLATION MANUAL.  
6. ALL BATHROOM EXHAUST FANS SHALL BE INTERLOCKED WITH LIGHTING. FAN SHALL REMAIN ON FOR 15 MINUTES AFTER LIGHTS ARE SHUT OFF.

LIGHTING LEGEND	
	LITHONIA LIGHTI FEM L48 6000LM IMAFL WD 80CRI 35K FEM LED 48", 6,000 LUMENS, ACR. 45 WATTS
	LITHONIA LIGHTI FEM L48 6000LM IMAFL WD 80CRI 35K FEM LED 48", 6,000 LUMENS, ACR. 45 WATTS
	LITHONIA LIGHTI EPANL 2X2 4000LM 80CRI 35K EPANL 2X2, 4000 NOMINAL LUMENS 26 WATTS
	GOTHAM ARCHITEC EVD6 35/15, AR WD LSS EVD 6IN ROUND, 80 CRI, 3500K. 35 WATTS
	LED TYPE WALL SCONCE POSSINI EURO FRAMED 16 1/4"H BRUSHED NICKLE LAMPS PLUS # 9K037
	LED TYPE WALL WALL PACK WITH PHOTOCELL BARRON LIGHTING #TLED-NFM-42-VS-4K 42 WATTS
	LED EXIT SIGN FIXTURE LITHONIA LIGHTING EXRG EL M6. 1 WATT
	NLIGHT NPP16 D SA POWER/RELAY PACK
	NLIGHT NCM PDT 9 LOW VOLTAGE CEILING MOUNT OCCUPANCY SENSOR
	JUNCTION BOX

FIRST FLOOR LIGHTING PLAN  
SCALE: 1/4" = 1'-0"

DATE: 7.18.22  
ISSUE: FOR BID

SEAL:

SENDEWSKI ARCHITECTS PC  
ARCHITECTS - PLANNERS  
215 ROANOKE AVENUE  
RIVERHEAD, NY 11901  
(631) 727-5352  
9 SELENA COURT  
WALDEN, NY 12586  
(845) 275-8859

TAPPAN FIRE DISTRICT  
300 WESTERN HWY S,  
TAPPAN NY, 10983  
FIRST FLOOR  
LIGHTING PLAN

PROJECT #: 21-08

DRAWN BY:

CAD FILE: 21-08/P:/BID

DRAWING#:

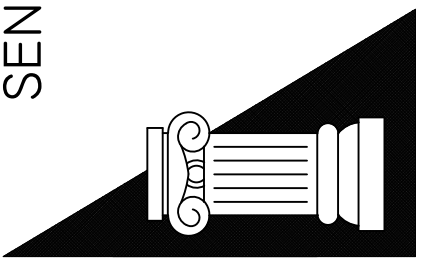
E-6

SEAL:

SENDEWSKI ARCHITECTS PC  
ARCHITECTS - PLANNERS

215 ROANOKE AVENUE  
RIVERHEAD, NY 11901  
(631) 727-5352

9 SELENA COURT  
WALDEN, NY 12586  
(845) 275-8859



TAPPAN FIRE DISTRICT  
300 WESTERN HWY S,  
TAPPAN NY, 10983

MEZZANINE  
LIGHTING PLAN

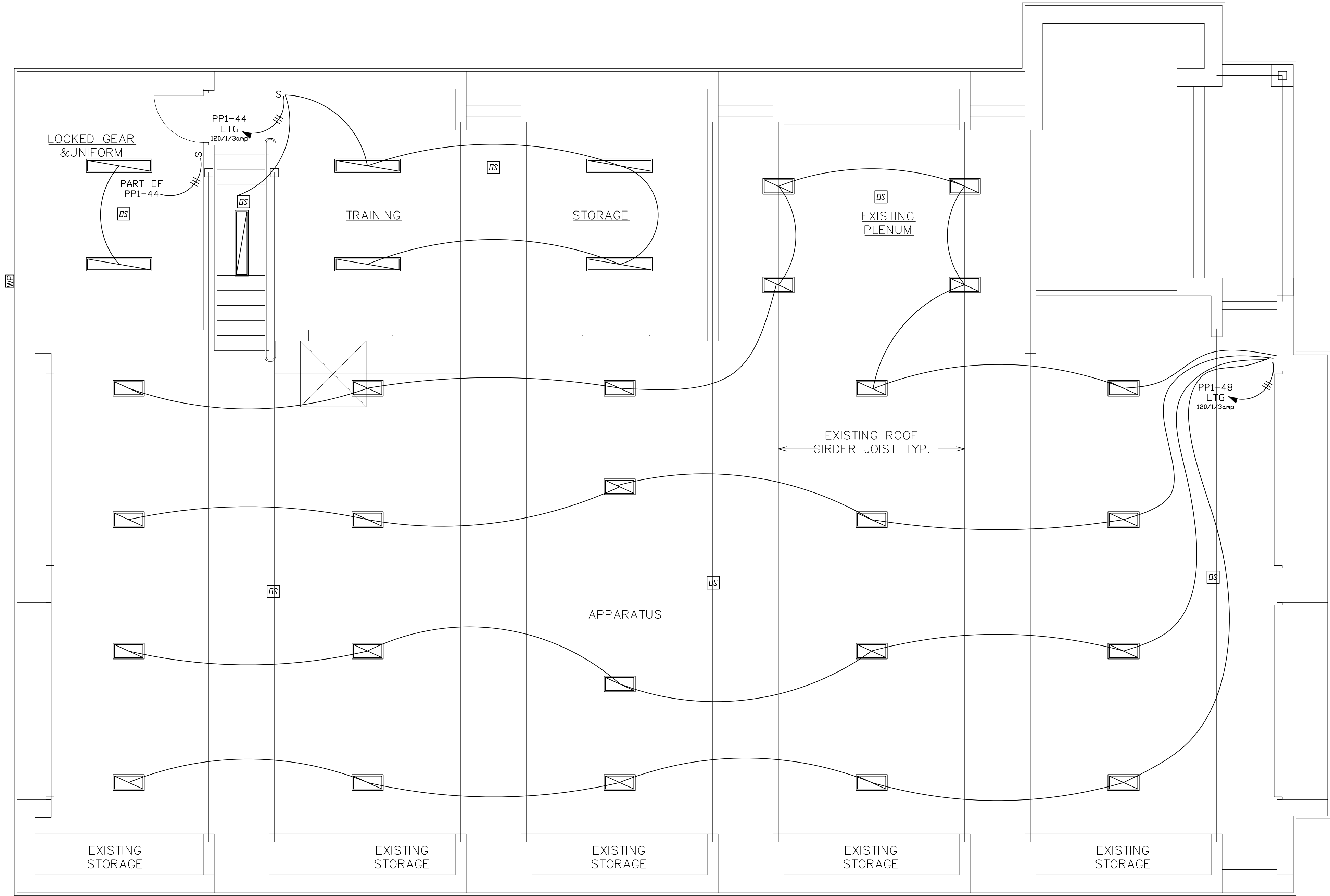
PROJECT #: 21-08

DRAWN BY:

CAD FILE: 21-08/P:/BID

DRAWING#:

E-7



- GENERAL NOTES:
1. WHERE EXPOSED, ALL WIRING SHALL BE IN CONDUIT.
  2. ALL PIPING SHALL BE AT CEILING DOWN TO DEVICE OR FIXTURE UNLESS OTHERWISE NOTED.
  3. VERIFY ALL FINAL SWITCH LOCATIONS & TYPE WITH ARCHITECT PRIOR TO INSTALLATION.
  4. VERIFY FIXTURE TYPES WITH ARCHITECT PRIOR TO INSTALLATION. CONNECTIONS SHALL BE AS PER MANUFACTURERS REQUIREMENTS.
  5. LED STRIP LIGHTING SHALL BE INSTALLED AS PER THE MANUFACTURER'S INSTALLATION MANUAL.
  6. ALL BATHROOM EXHAUST FANS SHALL BE INTERLOCKED WITH LIGHTING. FAN SHALL REMAIN ON FOR 15 MINUTES AFTER LIGHTS ARE SHUT OFF.

LIGHTING LEGEND	
	LITHONIA LIGHT1 FEM L48 6000LM IMAFL VD 80CRI 35K FEM LED 48', 6,000 LUMENS, ACR. 45 WATTS
	LITHONIA LIGHT1 FEM L48 6000LM IMAFL VD 80CRI 35K FEM LED 48', 6,000 LUMENS, ACR. 45 WATTS
	LITHONIA LIGHT1 EPANL 2X2 4000LM 80CRI 35K EPANL 2X2, 4000 NOMINAL LUMENS 26 WATTS
	GOTHAM ARCHITEC EVD6 35/15 AR WD LSS EVD 6IN ROUND, 80 CRI, 3500K. 35 WATTS
	LED TYPE WALL SCONCE POSSINI EURO FRAMED 16 1/4"H BRUSHED NICKLE LAMPS PLUS # 9K037
	LED TYPE WALL WALL PACK WITH PHOTOCCELL BARRON LIGHTING #TLED-NFM-42-VS-4K 42 WATTS
	LED EXIT SIGN FIXTURE LITHONIA LIGHTING EXRG EL M6. 1 WATT
	NLIGHT NPP16 D SA POWER/RELAY PACK
	NLIGHT NCM PDT 9 LDW VOLTAGE CEILING MOUNT OCCUPANCY SENSOR
	JUNCTION BOX

MEZZANINE LIGHTING PLAN

SCALE: 1/4" = 1'-0"

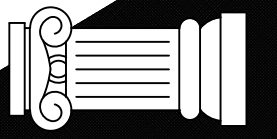


SEAL:

SENDEWSKI ARCHITECTS PC  
ARCHITECTS - PLANNERS

215 ROANOKE AVENUE  
RIVERHEAD, NY 11901  
(631) 727-5352

9 SELENA COURT  
WALDEN, NY 12586  
(845) 275-8859



TAPPAN FIRE DISTRICT  
300 WESTERN HWY S,  
TAPPAN NY, 10983

FIRST FLOOR  
MISCELLANEOUS PLAN

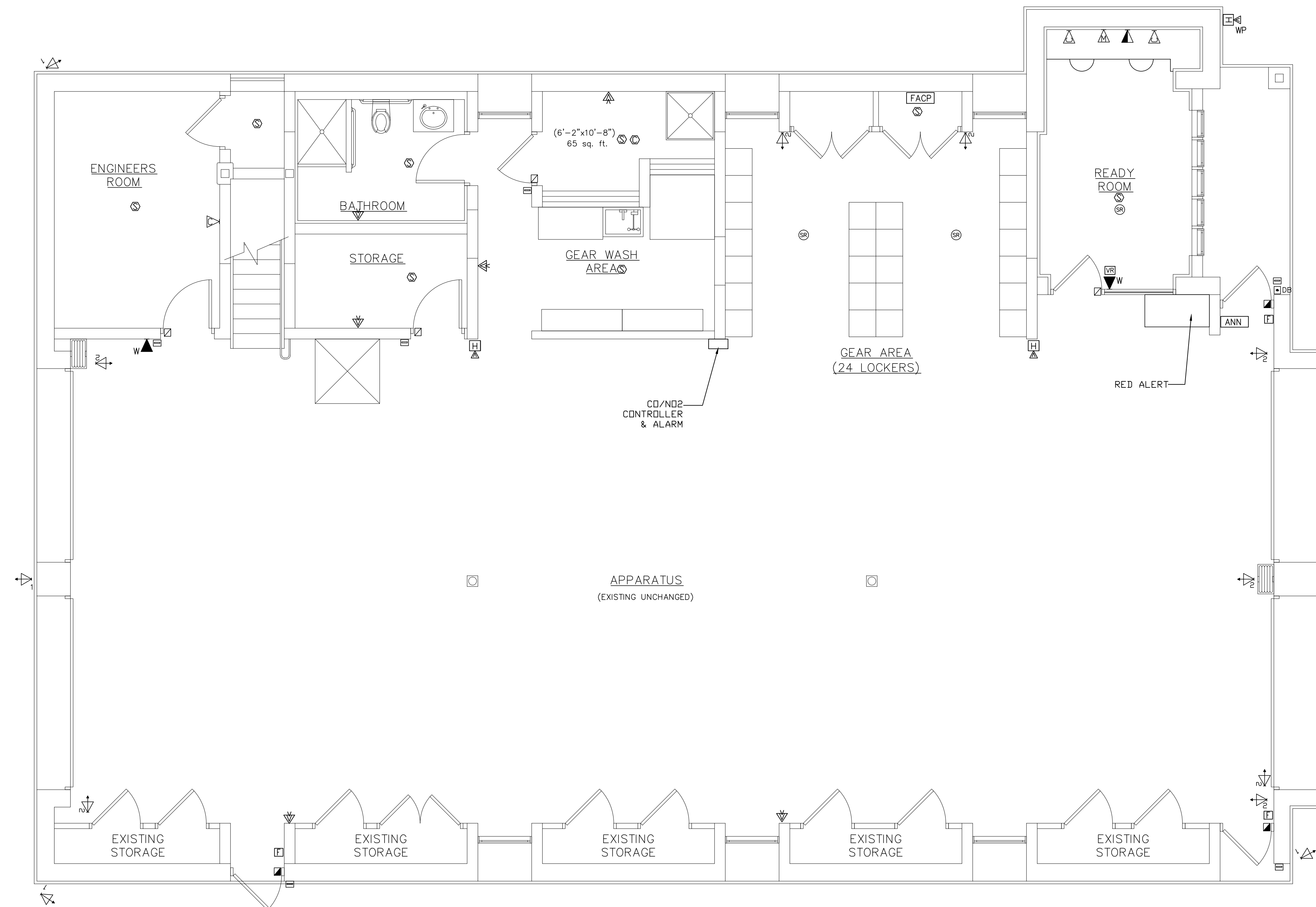
PROJECT #: 21-08

DRAWN BY:

CAD FILE: 21-08/P: /BID

DRAWING#:

E-8



FIRST FL MISCELLANEOUS PLAN  
SCALE: 1/4" = 1'-0"

### SYMBOL LIST

- CABLE TV OUTLET(MTD. @ 7'-6" AFF) UNLESS NOTED WIRE SUPPLIED & INSTALLED BY ELECTRICAL CONTRACTOR TO COMPUTER IT ROOM. TERMINATE W/2-CAT 6 WIRE WHITE. VERIFY W/CABLE CD
- COMPUTER OUTLET(DUPLEX)(MTD. @ 2'-0" AFF) ELECTRICAL CONTRACTOR SHALL SUPPLY & INSTALL CMPTR. WIRE CAT 6(BLUE) TO COMPUTER RM FROM EACH OUTLET. TERMINATE AT PUNCH BLOCK
- TELEPHONE OUTLET(MTD. @ 2'-0" AFF.) W = WALL MTD. (MTD. @ 64" AFF) ELECTRICAL CONTRACTOR WILL SUPPLY AND INSTALL 2 CAT 6 WIRE GREY FROM EACH TELEPHONE OUTLET TO COMPUTER RM. TERMINATE AT PUNCH BLOCK
- INTERIOR DOOR ELECTRIC STRIKE
- EXTERIOR DOOR ELECTRIC STRIKE
- CARD READER(MTD. @ 48" AFF) WHERE APPLICABLE
- DOOR BELL & SPEAKER(PART OF ACCESS SYSTEM) ELECTRICAL CONTR. SHALL SUPPLY AND INSTALL WIRE, CDT, JBOXES ETC PLUS 18/4 TO TELEPHONE SYSTEM.
- DOOR CONTROL DEVICE
- SECURITY CAMERA  
1 = DENOTES TYPE OF CAMERA(OUTDOOR)  
2 = DENOTES TYPE OF CAMERA(INDOOR)
- RADIO SYSTEM SPEAKER  
W/18/4+CAT 6 ORANGE FROM COMPUTER ROOM TO VOLUME  
VOLUME CONTROL TO SPEAKER  
RADIO SYSTEM VOLUME CONTROLLER
- MONITOR OUTLET(DUPLEX)(MTD. @ 7'-6" AFF) ELECTRICAL CONTRACTOR SHALL SUPPLY & INSTALL CMPTR. WIRE CAT 6(BLUE) TO COMPUTER RM FROM EACH OUTLET. TERMINATE AT PUNCH BLOCK
- FACP FIRE ALARM CONTROL PANEL
- ANN FIRE ALARM REMOTE ANNUNCIATOR PANEL
- STROBE
- HORN/STROBE
- MANUAL PULL STATION
- CONTROL MODULE WITH RELAY/CONTACTOR FOR HOOD
- SMOKE DETECTOR  
RAL=ABOVE CLG. W/ REMOTE ALARM LAMP
- CARBON MONOXIDE DETECTOR
- HEAT DETECTOR  
RAL=ABOVE CLG. W/ REMOTE ALARM LAMP

NOTE:  
LOCATIONS SHOWN FOR ALL TELEPHONE, COMPUTER JACKS, CABLE TV, FIRE ALARM, ETC. ARE CONCEPTUAL-EXACT LOCATIONS TO BE COORDINATED WITH OWNER/ARCHITECT.

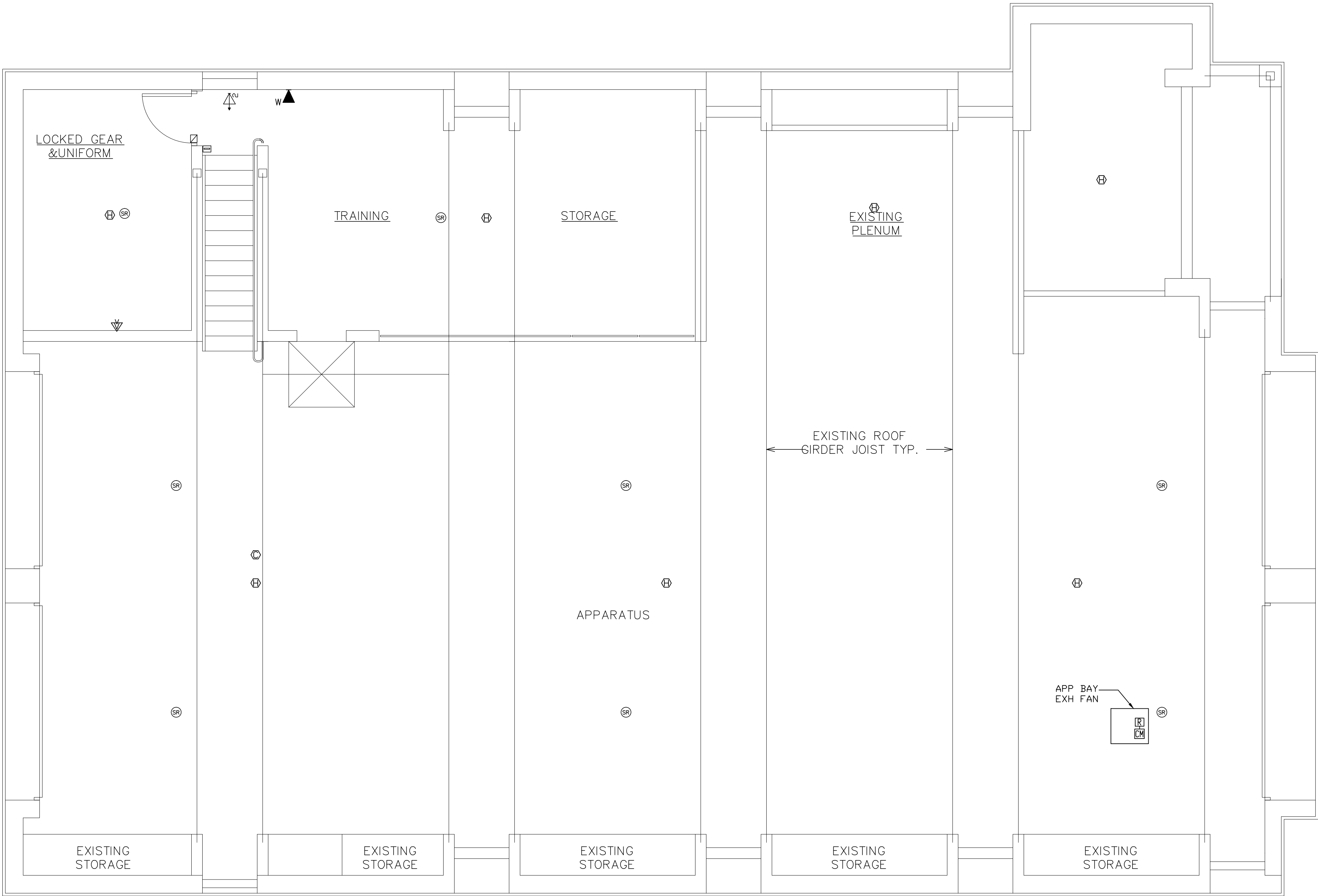
ALL WIRING FOR ACCESS, SURVEILLANCE, TELEPHONE, CABLE TV, COMPUTER, FIRE ALARM, PUBLIC ADDRESS SYSTEMS TO BE SUPPLIED AND INSTALLED BY ELECTRICAL CONTR. ALL CDT, JBOXES ETC NEEDED TO FACILITATE INSTALLATION SHALL BE SUPPLIED AND INSTALLED BY ELECT. CONTR. ALL ROUTING TO 2ND FLOOR COMPUTER ROOM.

NOTE:  
ALL WIRING FOR SPECIALTY SYSTEMS SHOWN ON THESE DRAWINGS SHALL BE VERIFIED WITH SUCCESSFUL SPECIALTY SYSTEMS VENDOR PRIOR TO PURCHASE OR INSTALLATION BY ELECTRICAL CONTRACTOR

NOTE:  
ALL WIRING FOR SPECIALTY SYSTEMS SHOWN ON THESE DRAWINGS SHALL BE CERTIFIED BY ELECTRICAL CONTRACTOR.

NOTE:  
OUTLETS SHOWN ON MISCELLANEOUS SYSTEMS PLANS ARE ALSO SHOWN ON POWER PLANS AND ARE NOT IN ADDITION TO OUTLETS SHOWN ON POWER PLANS





SYMBOL LIST	
	CABLE TV OUTLET(MTD. @ 7'-6" AFF) UNLESS NOTED WIRE SUPPLIED & INSTALLED BY ELECTRICAL CONTRACTOR TO COMPUTER IT ROOM. TERMINATE W/2-CAT 6 WIRE WHITE. VERIFY V/CABLE CD
	COMPUTER OUTLET(DUPLEX)(MTD. @ 2'-0" AFF) ELECTRICAL CONTRACTOR SHALL SUPPLY & INSTALL CMPTR. WIRE CAT 6(BLUE) TO COMPUTER RM FROM EACH OUTLET. TERMINATE AT PUNCH BLOCK
	TELEPHONE OUTLET(MTD. @ 2'-0" AFF.) W = WALL MTD. (MTD. @ 6'-4" AFF) ELECTRICAL CONTRACTOR WILL SUPPLY AND INSTALL 2 CAT 6 WIRE GREY FROM EACH TELEPHONE OUTLET TO COMPUTER RM. TERMINATE AT PUNCH BLOCK
	INTERIOR DOOR ELECTRIC STRIKE
	EXTERIOR DOOR ELECTRIC STRIKE
	CARD READER(MTD. @ 48" AFF) WHERE APPLICABLE
	DOOR BELL & SPEAKER(PART OF ACCESS SYSTEM) ELECTRICAL CNTR. SHALL SUPPLY AND INSTALL WIRE, CDT, JBOXES ETC PLUS 18/4 TO TELEPHONE SYSTEM.
	DOOR CONTROL DEVICE
	SECURITY CAMERA 1 = DENOTES TYPE OF CAMERA(OUTDOOR) 2 = DENOTES TYPE OF CAMERA(INDOOR)
	RADIO SYSTEM SPEAKER W/18/4+CAT 6 ORANGE FROM COMPUTER ROOM TO VOLUME
	VOLUME CONTROL TO SPEAKER RADIO SYSTEM VOLUME CONTROLLER
	MONITOR OUTLET(DUPLEX)(MTD. @ 7'-6" AFF) ELECTRICAL CONTRACTOR SHALL SUPPLY & INSTALL CMPTR. WIRE CAT 6(BLUE) TO COMPUTER RM FROM EACH OUTLET. TERMINATE AT PUNCH BLOCK
	FIRE ALARM CONTROL PANEL
	FIRE ALARM REMOTE ANNUNCIATOR PANEL
	STROBE
	HORN/STROBE
	MANUAL PULL STATION
	CONTROL MODULE WITH RELAY/CONTACTOR FOR HOOD
	SMOKE DETECTOR RAL=ABOVE CLG. W/ REMOTE ALARM LAMP
	CARBON MONOXIDE DETECTOR
	HEAT DETECTOR RAL=ABOVE CLG. W/ REMOTE ALARM LAMP

NOTE:  
LOCATIONS SHOWN FOR ALL TELEPHONE, COMPUTER JACKS, CABLE TV, FIRE ALARM, ETC. ARE CONCEPTUAL-EXACT LOCATIONS TO BE COORDINATED WITH OWNER/ARCHITECT.

ALL WIRING FOR ACCESS, SURVEILLANCE, TELEPHONE, CABLE TV, COMPUTER, FIRE ALARM, PUBLIC ADDRESS SYSTEMS TO BE SUPPLIED AND INSTALLED BY ELECTRICAL CNTR. ALL CDT, JBOXES ETC NEEDED TO FACILITATE INSTALLATION SHALL BE SUPPLIED AND INSTALLED BY ELECT. CNTR. ALL ROUTING TO 2ND FLOOR COMPUTER ROOM.

NOTE:  
ALL WIRING FOR SPECIALTY SYSTEMS SHOWN ON THESE DRAWINGS SHALL BE VERIFIED WITH SUCCESSFUL SPECIALTY SYSTEMS VENDOR PRIOR TO PURCHASE OR INSTALLATION BY ELECTRICAL CONTRACTOR

NOTE:  
ALL WIRING FOR SPECIALTY SYSTEMS SHOWN ON THESE DRAWINGS SHALL BE CERTIFIED BY ELECTRICAL CONTRACTOR.

NOTE:  
OUTLETS SHOWN ON MISCELLANEOUS SYSTEMS PLANS ARE ALSO SHOWN ON POWER PLANS AND ARE NOT IN ADDITION TO OUTLETS SHOWN ON POWER PLANS

MEZZANINE MISCELLANEOUS PLAN

SCALE: 1/4" = 1'-0"

DATE: 7.18.22  
ISSUE: FOR BID

SEAL:

SENDEWSKI ARCHITECTS PC  
ARCHITECTS - PLANNERS  
215 ROANOKE AVENUE  
RIVERHEAD, NY 11901  
(631) 727-5352  
9 SELENA COURT  
WALDEN, NY 12586  
(845) 275-8859

TAPPAN FIRE DISTRICT  
300 WESTERN HWY S,  
TAPPAN NY, 10983

MEZZANINE  
MISCELLANEOUS PLAN

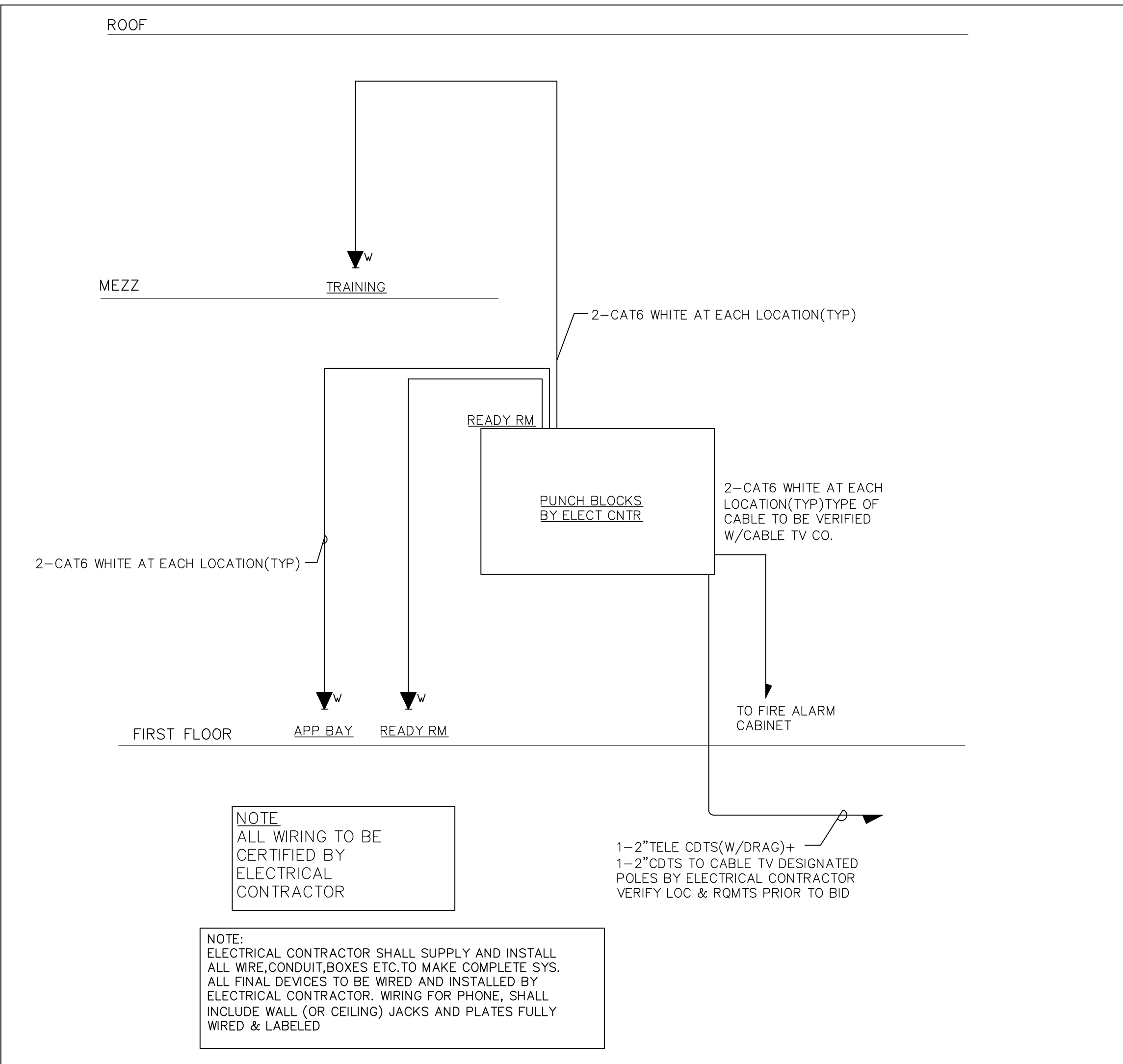
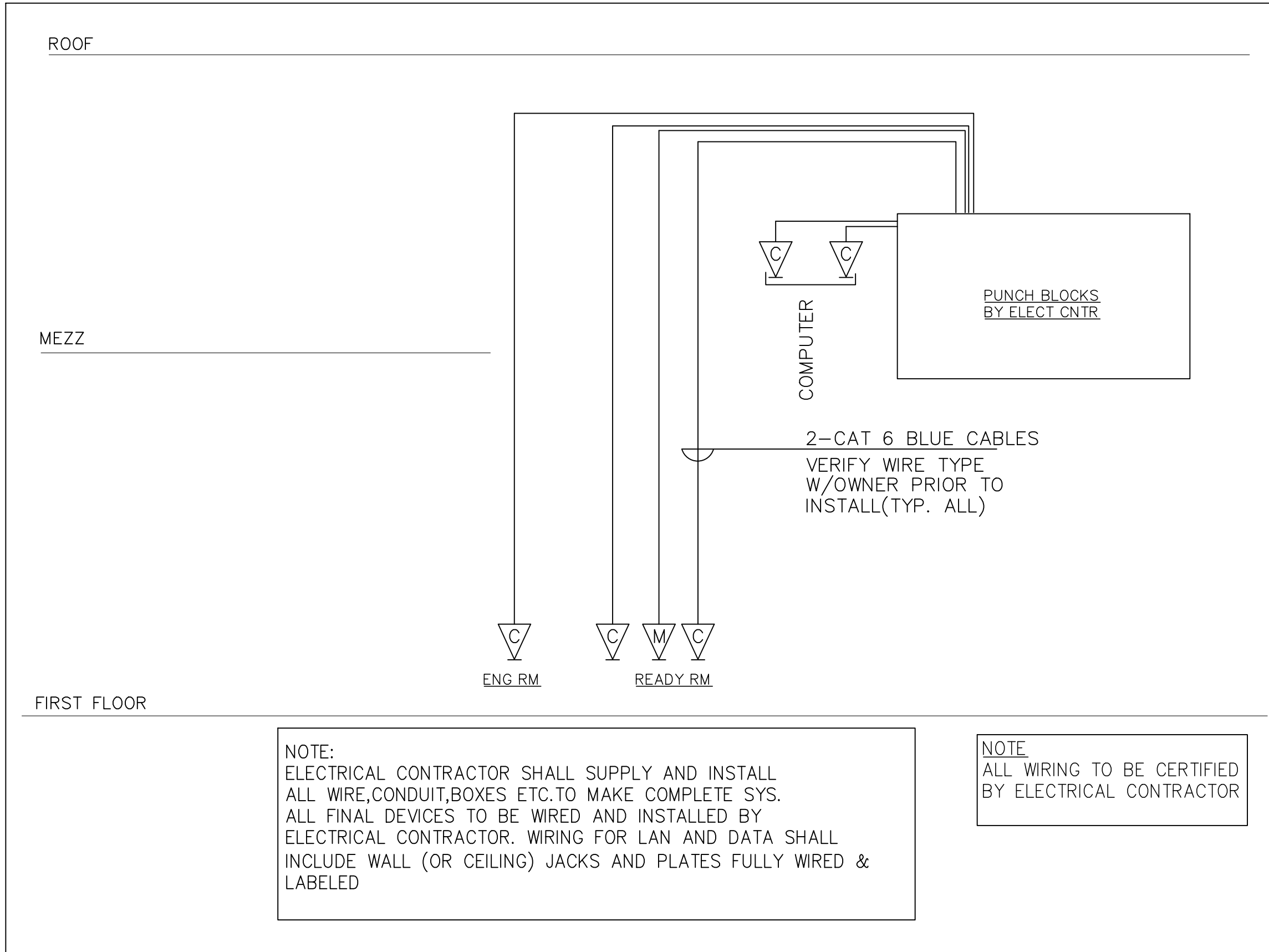
PROJECT #: 21-08

DRAWN BY:

CAD FILE: 21-08/P:/BID

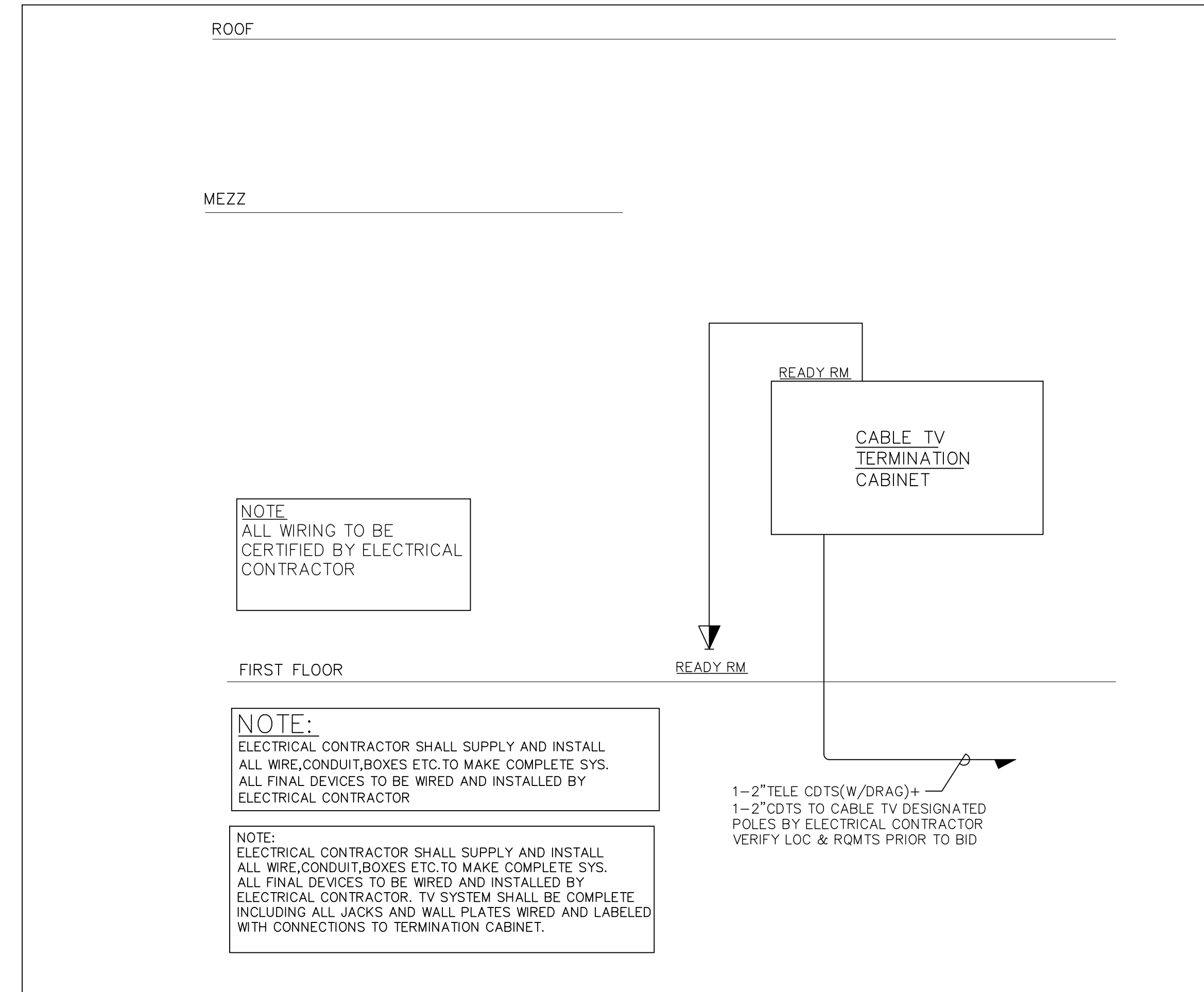
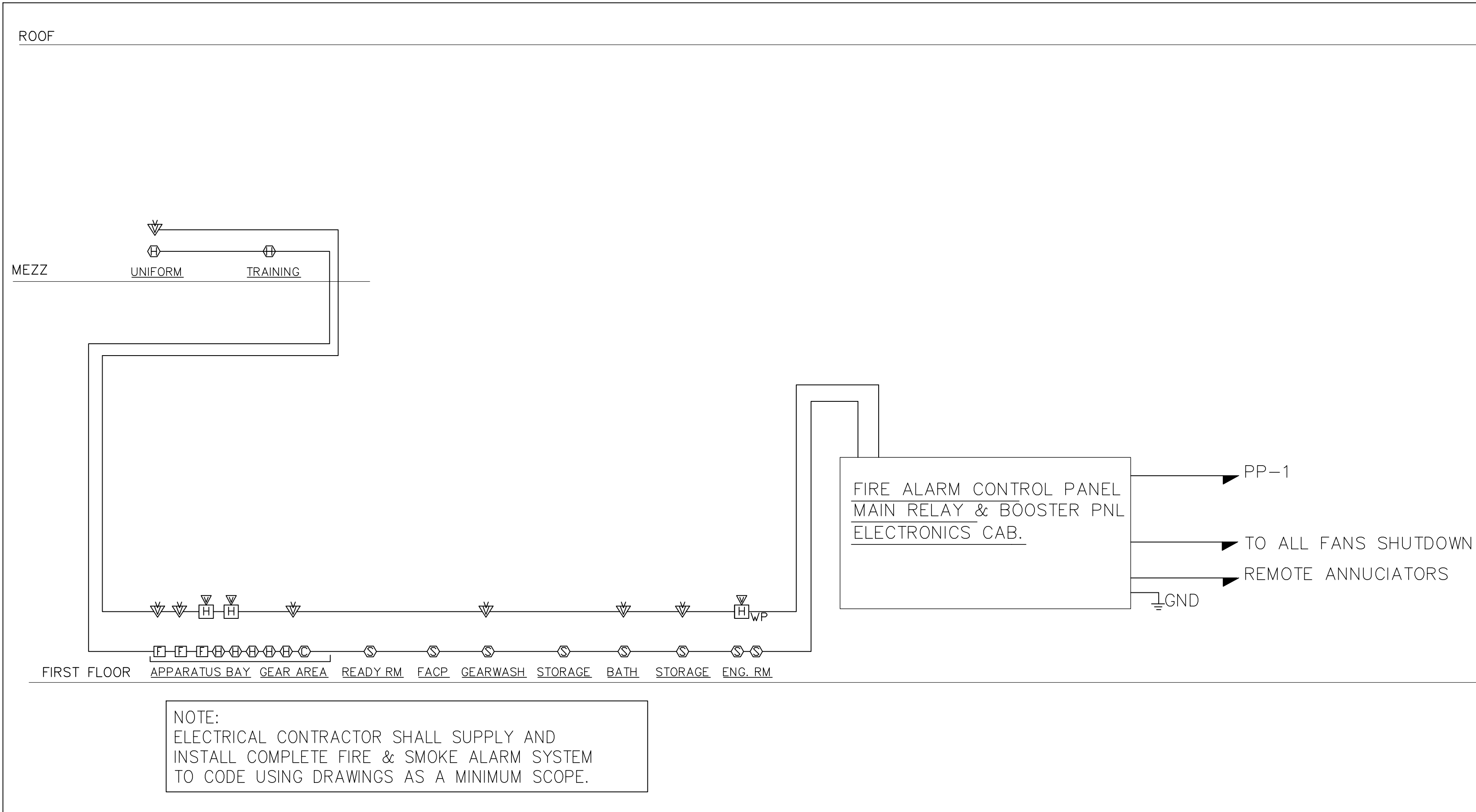
DRAWING#:

E-9



## MISCELLANEOUS RISERS

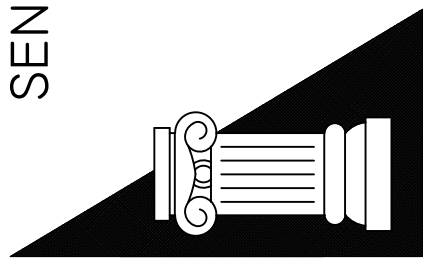
SCALE: 1/4" = 1'-0"



DATE: 7.18.22  
ISSUE: FOR BID

SEAL:

SENDEWSKI ARCHITECTS PC  
ARCHITECTS - PLANNERS  
215 ROANOKE AVENUE  
RIVERHEAD, NY 11901  
(631) 727-5352  
9 SELENA COURT  
WALDEN, NY 12586  
(845) 275-8859



TAPPAN FIRE DISTRICT  
300 WESTERN HWY S,  
TAPPAN NY, 10983

MISCELLANEOUS RISERS

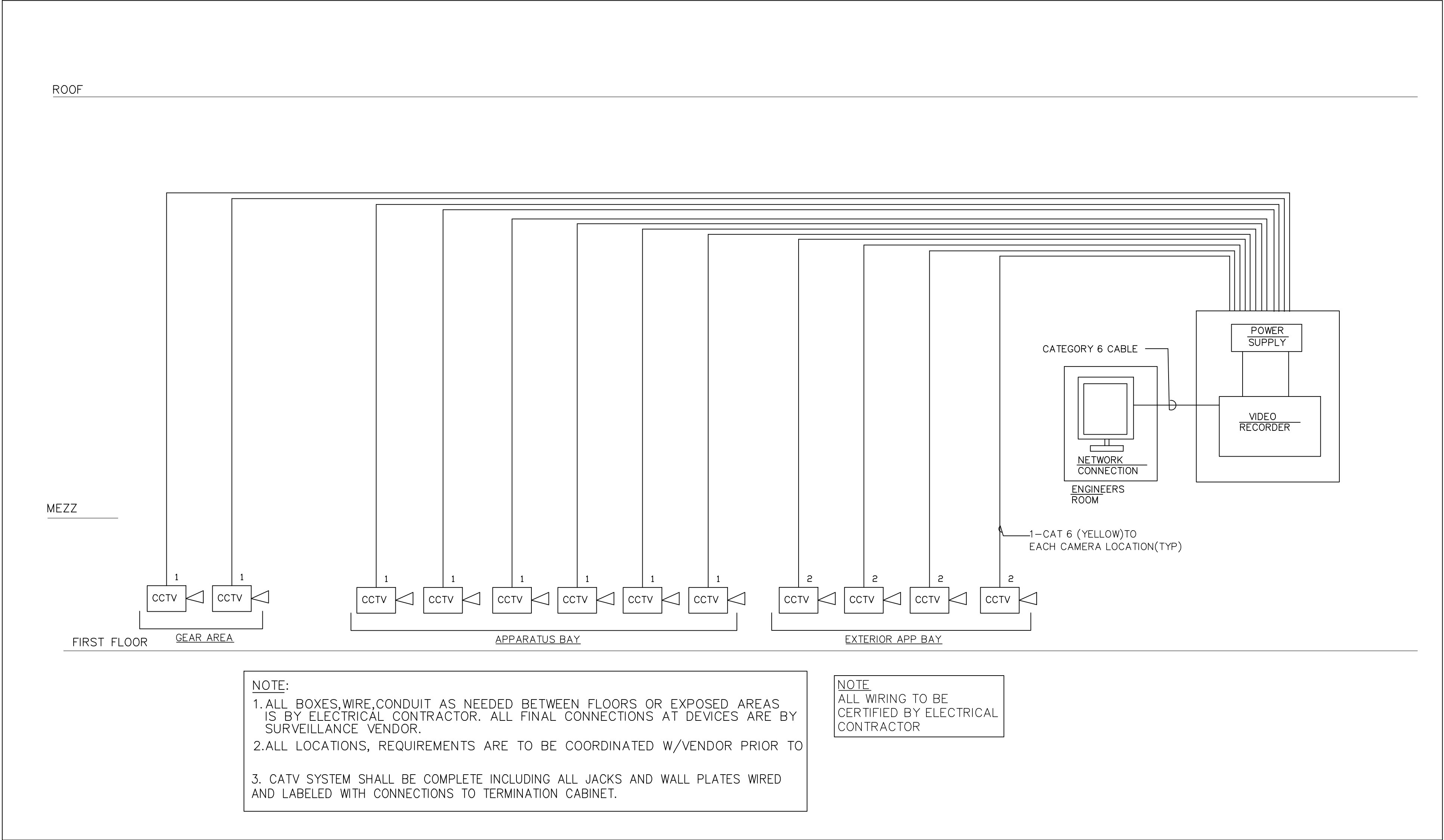
PROJECT #: 21-08

DRAWN BY:

CAD FILE: 21-08/P: /BID

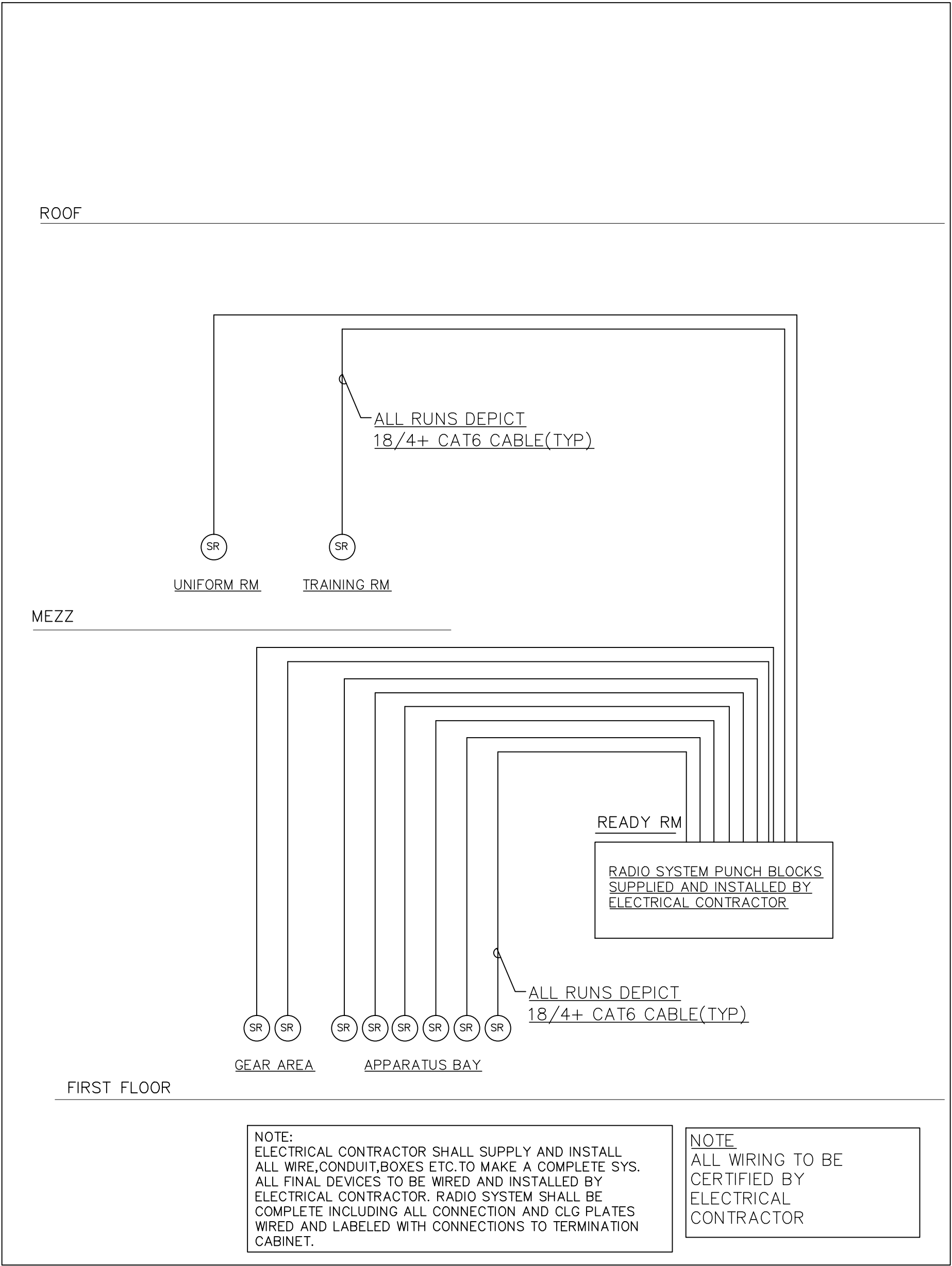
DRAWING#:

E-10



MISCELLANEOUS RISERS CONTINUED

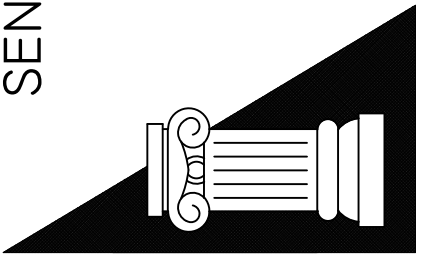
SCALE: 1/4" = 1'-0"



DATE: 7.18.22  
ISSUE: FOR BID

SEAL:

SENDELEWSKI ARCHITECTS PC  
ARCHITECTS - PLANNERS  
215 ROANOKE AVENUE  
RIVERHEAD, NY 11901  
(631) 727-5352  
9 SELENA COURT  
WALDEN, NY 12586  
(845) 275-8859



TAPPAN FIRE DISTRICT  
300 WESTERN HWY S,  
TAPPAN NY, 10983

MISCELLANEOUS RISERS  
CONTINUED

PROJECT #: 21-08

DRAWN BY:

CAD FILE: 21-08/P:/BID

DRAWING#:

E-11