

DRAWING LIST:
M-1 SCHEDULES
M-2 LOWER LEVEL FLOOR PLAN
M-3 FIRST FLOOR PLAN
M-4 UPPER LEVEL FLOOR PLAN
M-6 KITCHEN HOOD SCHEDULES
M-7 KITCHEN EQUIPMENT SCHEDULES
M-8 KITCHEN MAU & EXHAUST DETAILS
M-9 MECHANICAL DETAILS

SCOPE OF WORK:
THE FOLLOWING ITEMS DESCRIBED ARE IN COMPLIANCE WITH THE 2020 NYSECCC, 2020 IBC AND THE 2020 IMC.
IT SHALL BE THE RESPONSIBILITY OF THE MECHANICAL CONTRACTOR TO OBTAIN ALL FILINGS, APPROVALS, PERMITS AND SIGNOFFS FOR THIS PROJECT.

THE MECHANICAL CONTRACTOR SHALL SUPPLY AND INSTALL ALL OF THE FOLLOWING AND ALL SYSTEMS WITHIN THE DRAWINGS AND SPECIFICATIONS:

- PROVIDE A KITCHEN EXHAUST HOOD W/ FIRE SUPPRESSION, EXHAUST FAN AND MAKEUP AIR UNIT.
- PROVIDE A SPLIT SYSTEM COMPOSED OF (1) HEATPUMP AND (1) FAN COIL.
- UNIT HEATERS AND ALL ASSOCIATED INTAKE AND VENTING, CONTROLS AND CONTROL WIRING.
- INSTALL ALL EQUIPMENT ALONG WITH ALL SPECIFIED OPTIONS AND ACCESSORIES, REFRIGERANT PIPING, PIPING INSULATION, CONDENSATE PIPING, DUCTWORK, DUCT INSULATION, DUCT SUPPORTS, HANGERS, DIFFUSERS, GRILLES, DAMPERS, PENETRATIONS, ACCESS DOORS, CONTROL WIRING AND CONTROLS FOR ALL MECHANICAL SYSTEMS.

ENERGY COMPLIANCE PATH: 2020 NYSECCC PRESCRIPTIVE PATH
ADDITIONAL EFFICIENCY PACKAGE: REDUCED LIGHTING POWER (C406.3) - SEE ELECTRICAL PLANS FOR COMPLIANCE

DATE: 7.18.22
ISSUE: FOR BID

SEAL:

SENDEWSKI ARCHITECTS PC
ARCHITECTS - PLANNERS
215 ROANOKE AVENUE
RIVERHEAD, NY 11901
(631) 727-5352
9 SELENA COURT
WALDEN, NY 12586
(845) 275-8859



TAPPAN FIRE DISTRICT
300 WESTERN HWY S,
TAPPAN NY, 10983

MECHANICAL
EQUIPMENT SCHEDULES

PROJECT #: 21-08

DRAWN BY:

CAD FILE: 21-08/P:/BID

DRAWING#:

M-1

INFRA RED HEATER SCHEDULE (GAS FIRED)

MARK	MANUFACTURER TYPE & MODEL	HEATING / BTU		SUPPLY PRESS.	F.L.A.	MOTOR DATA					LENGTH	LOCATION(S)
		INPUT	OUTPUT			CFM	HP	VOLTS	PHASE	AMPS		
IRH-1	SPACE-RAY LTS-40	50,000	-	5"-14" W.C.	2.6	-	-	115	1	2.6	30'	SEATING
IRH-2	SPACE-RAY LTS-40	50,000	-	5"-14" W.C.	2.6	-	-	115	1	2.6	30'	SEATING

1. PROVIDE AND INSTALL WALL MOUNTED THERMOSTAT WITH SUB-BASE.
2. PROVIDE AND INSTALL EXHAUST PIPING, ROOF TERMINATION WITH FLASHING.
3. PROVIDE LOCKING THERMOSTAT GUARD.

CEILING CIRCULATING FAN SCHEDULE

DESIGNATION	MAKE	MODEL	POWER SUPPLY			MOCF	H.P	RPM	#AIRFOILS	WEIGHT	LISTINGS
			VOLTAGE	PHASE	WATTS						
VF-1	HAMPTON BAYS	CABANA	120	1	500	15	-	242	5	12 LBS.	UL
VF-2	HAMPTON BAYS	CABANA	120	1	500	15	-	242	5	12 LBS.	UL
VF-3	HAMPTON BAYS	CABANA	120	1	500	15	-	242	5	12 LBS.	UL

PROVIDE: COLUMN MOUNTED CONTROL, VANDAL PROOF COVER.

EXHAUST FAN SCHEDULE

TAG	SERVICE	TYPE	FAN DATA							DAMPER SIZE	ROOF OPENING	WEIGHT	GREENHECK MODEL NO	NOTES
			CFM	S.P	AMPS	VOLT	PH	H.P.	RPM					
EF-1	MENS RESTROOM	CLG	75	0.3	0.1	115	1	-	884	6"Ø	-	12	SP-80-VG	-
EF-2	WOMENS RESTROOM	CLG	75	0.3	0.1	115	1	-	884	6"Ø	-	12	SP-80-VG	-

PROVIDE: ROOF CURBS, FLASHING, MOUNTING, HANGING/SPRING VIBRATION ISOLATION, FLEXIBLE CONNECTORS, BACKDRAFT DAMPERS, DISCONNECTS,

UNIT HEATER SCHEDULE (ELECTRIC)

MARK	MANUFACTURER TYPE & MODEL	COILS	WATTS	ENTERING AIR (°F)	BTU/HR.	ELECTRICAL DATA					REMARKS	LOCATION(S)
						CFM	HP	VOLTS	PHASE	AMPS		
EUH-1	QMARK CWH3180F	1	1,800	40	6,138	100	-	120	1	15.0	-	STORAGE RM.
EUH-2	QMARK CWH1101DSAFF	1	1,000	40	3,413	65	-	120	1	8.4	-	BATH RM.
EUH-3	QMARK CWH1101DSAFF	1	1,000	40	3,413	65	-	120	1	8.4	-	BATH RM.

PROVIDE: DISCONNECT, WALL MOUNT

UNIT HEATER SCHEDULE (GAS FIRED)

MARK	MANUFACTURER TYPE & MODEL	HEATING / BTU		TEMP. RISE	F.L.A.	MOTOR DATA					WEIGHT	LOCATION(S)
		INPUT	OUTPUT			CFM	HP	VOLTS	PHASE	AMPS		
UH-1	MODINE HDS-30	30,000	24,600	44*	3.75	505	1/15	120	1	3.8	55	STORAGE
UH-2	MODINE HDS-30	30,000	24,600	44*	3.75	505	1/15	120	1	3.8	55	TRAINING AREA

1. PROVIDE AND INSTALL WALL MOUNTED LOW VOLTAGE THERMOSTAT WITH SUB-BASE.
2. PROVIDE AND INSTALL INTAKE AND EXHAUST PIPING, CONCENTRIC ROOF TERMINATION KIT WITH FLASHING.
3. PROVIDE LOCKING THERMOSTAT GUARD.
4. PROVIDE 24V TRANSFORMER.

HEATPUMP UNIT SCHEDULE (HEAT OR COOL)

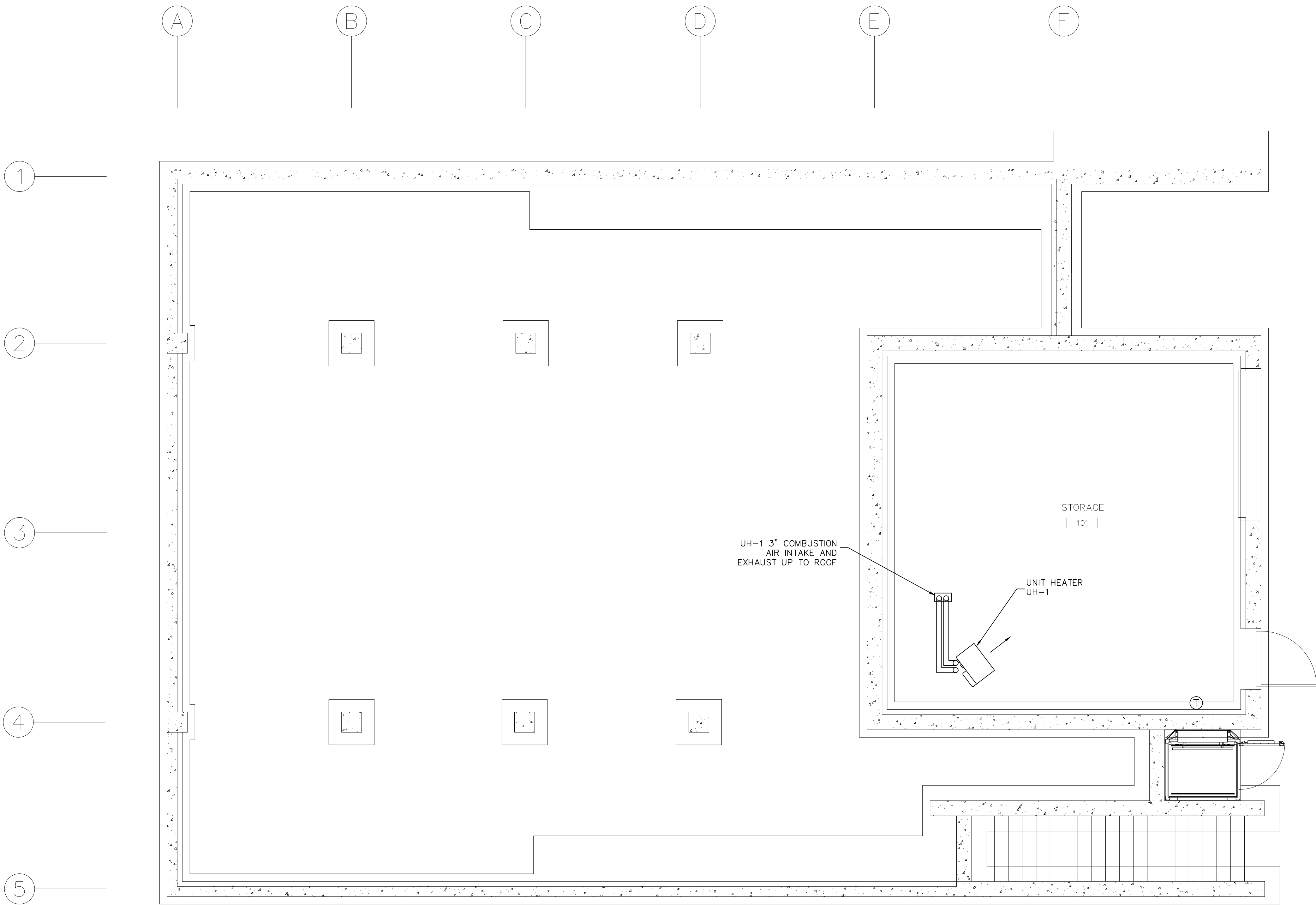
DESIGNATION	RATING (TONS)	NO. OF MODULES	REFRIG CHARGE	COOLING CAPACITY (BTU's)	HEATING CAPACITY (BTU's)	POWER SUPPLY				MAKE	MODEL	SEER/HSPF	LOCATION	SERVICE
						VOLTAGE	PHASE	MCA	MOCF					
HP-1	2	1	R-410A	24,000	28,000	208/230	1	17	30	mitsubishi	PUZ-HA24NHAI	19.5/10.6	GROUND	FC-1

INCLUDE: EQUIPMENT RAILS, REFRIGERANT LINE SETS, INSULATION, DISCONNECT, FUSES, WHIP, REMOTE MOUNTED THERMOSTAT.

FAN COIL SCHEDULE

DESIGNATION	POWER SUPPLY				TONS	COOLING MBH	HEATING MBH	CFM	HP	MAKE	MODEL	LOCATION	WEIGHT
	VOLTAGE	PHASE	MCA	MAX FUSE									
FC-1	208	1	.36	OUTDOOR	2	24.0	24.0	700	-	mitsubishi	PKA-A24KA7	KITCHEN	46 LBS.

NOTES: PROVIDE DISCONNECT SWITCH, FILTERS, CONDENSATE DRAIN PIPING, REFRIG. PIPING & INSULATION, 7 DAY PROGRAMMABLE THERMOSTAT, CONTROLS, CONTROL WIRING, CONDENSATE PUMP.



- PLAN NOTES:
1. ALL SUPPLY, RETURN AND EXHAUST AIR DUCTS AND PLENUMS LOCATED IN UNCONDITIONED SPACES SHALL BE FULLY INSULATED AND EXTERNALLY WRAPPED WITH A MINIMUM OF R-6 FOIL BACK INSULATION. INCLUDE MASTIC SEALING OF ALL JOINTS AND SEAMS.
 2. ALL DUCTWORK HAS BEEN SIZED IN ACCORDANCE WITH THE ASHRAE HANDBOOK OF FUNDAMENTALS.
 3. ALL AIRSIDE SYSTEMS SHALL BE BALANCED AND A CERTIFIED REPORT PROVIDED.
 4. ALL JOINTS, LONGITUDINAL AND TRANSVERSE SEAMS AND CONNECTIONS IN DUCTWORK SHALL BE SECURELY FASTENED AND SEALED WITH WELDS, GASKETS, MASTICS (ADHESIVES), MASTIC-PLUS-EMBEDDED-FABRIC SYSTEMS, LIQUID SEALANTS OR TAPES. TAPES AND MASTICS USED TO SEAL METALLIC AND FLEXIBLE AIR DUCTS AND FLEXIBLE AIR CONNECTORS SHALL COMPLY WITH UL 181B AND SHALL BE MARKED "181 B-FX" FOR PRESSURE-SENSITIVE TAPE OR "181 B-M" FOR MASTIC. DUCT CONNECTIONS TO FLANGES OF AIR DISTRIBUTION SYSTEM EQUIPMENT SHALL BE SEALED AND MECHANICALLY FASTENED. MECHANICAL FASTENERS FOR USE WITH FLEXIBLE NONMETALLIC AIR DUCTS SHALL COMPLY WITH UL 181B AND SHALL BE MARKED "181 B-C." CLOSURE SYSTEMS USED TO SEAL ALL DUCTWORK SHALL BE INSTALLED IN ACCORDANCE WITH THE MANUFACTURER'S INSTRUCTIONS.
 5. DUCTS SHALL BE SUPPORTED IN ACCORDANCE WITH SMACNA HVAC DUCT CONSTRUCTION STANDARDS-METAL AND FLEXIBLE. FLEXIBLE AND OTHER FACTORY-MADE DUCTS SHALL BE SUPPORTED IN ACCORDANCE WITH THE MANUFACTURER'S INSTRUCTIONS.
 6. THE PRESSURE CLASSIFICATION OF DUCTS SHALL EQUAL OR EXCEED THE DESIGN PRESSURE OF THE AIR DISTRIBUTION IN WHICH THE DUCTS ARE UTILIZED.
 7. VERIFY LOCATIONS OF ALL THERMOSTATS AND SENSORS WITH ARCHITECT PRIOR TO INSTALLATION.
 8. ROUND EXHAUST BRANCH DUCTS SHALL BE GALVANIZED METAL.
 9. PROVIDE ACCESS DOORS FOR ALL DAMPERS WITHIN INACCESSIBLE CEILINGS.
 10. EXTERNAL DUCT INSULATION, EXCEPT SPRAY POLYURETHANE FOAM, AND FACTORY-INSULATED FLEXIBLE DUCT SHALL BE LEGIBLY PRINTED OR IDENTIFIED AT INTERVALS NOT GREATER THAN 36 INCHES WITH THE NAME OF THE MANUFACTURER, THE THERMAL RESISTANCE R-VALUE AT THE SPECIFIED INSTALLED THICKNESS AND THE FLAME SPREAD AND SMOKE-DEVELOPED INDEXES OF THE COMPOSITE MATERIALS. DUCT INSULATION PRODUCT R-VALUES SHALL BE BASED ON INSULATION ONLY, EXCLUDING AIR FILMS, VAPOR RETARDERS OR OTHER DUCT COMPONENTS, AND SHALL BE BASED ON TESTED C-VALUES AT 75°F MEAN TEMPERATURE AT THE INSTALLED THICKNESS, IN ACCORDANCE WITH RECOGNIZED INDUSTRY PROCEDURES.
 11. PROVIDE INSULATED REFRIGERANT LINESETS FROM HEAT PUMP TO FAN COIL UNIT. CONNECT AS PER MANUFACTURER'S INSTALLATION MANUAL.
 12. PIPING INSULATION EXPOSED TO THE WEATHER SHALL BE PROTECTED FROM DAMAGE, INCLUDING THAT CAUSED BY SUNLIGHT, MOISTURE, EQUIPMENT MAINTENANCE AND WIND, AND SHALL PROVIDE SHIELDING FROM SOLAR RADIATION THAT CAN CAUSE DEGRADATION OF THE MATERIAL. ADHESIVE TAPE SHALL NOT BE PERMITTED.
 13. ALL REFRIGERANT PIPING SHALL BE SUPPORTED OFF THE ROOF. PROVIDE PATE ROOF CURBS OR APPROVED EQUAL
 14. ALL EQUIPMENT SHALL BE LOCATED A MINIMUM OF 4' ABOVE FLOOR. PROVIDE EQUIPMENT RAILS.

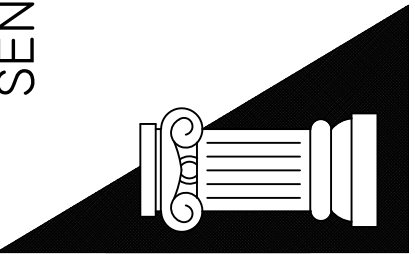
LOWER LEVEL MECHANICAL PLAN

SCALE: 1/4" = 1'-0"

DATE: 7.18.22
ISSUE: FOR BID

SEAL:

SENDEWSKI ARCHITECTS PC
ARCHITECTS - PLANNERS
215 ROANOKE AVENUE
RIVERHEAD, NY 11901
(631) 727-5352
9 SELENA COURT
WALDEN, NY 12586
(845) 275-8859



TAPPAN FIRE DISTRICT
300 WESTERN HWY S,
TAPPAN NY, 10983

LOWER LEVEL
MECHANICAL PLAN

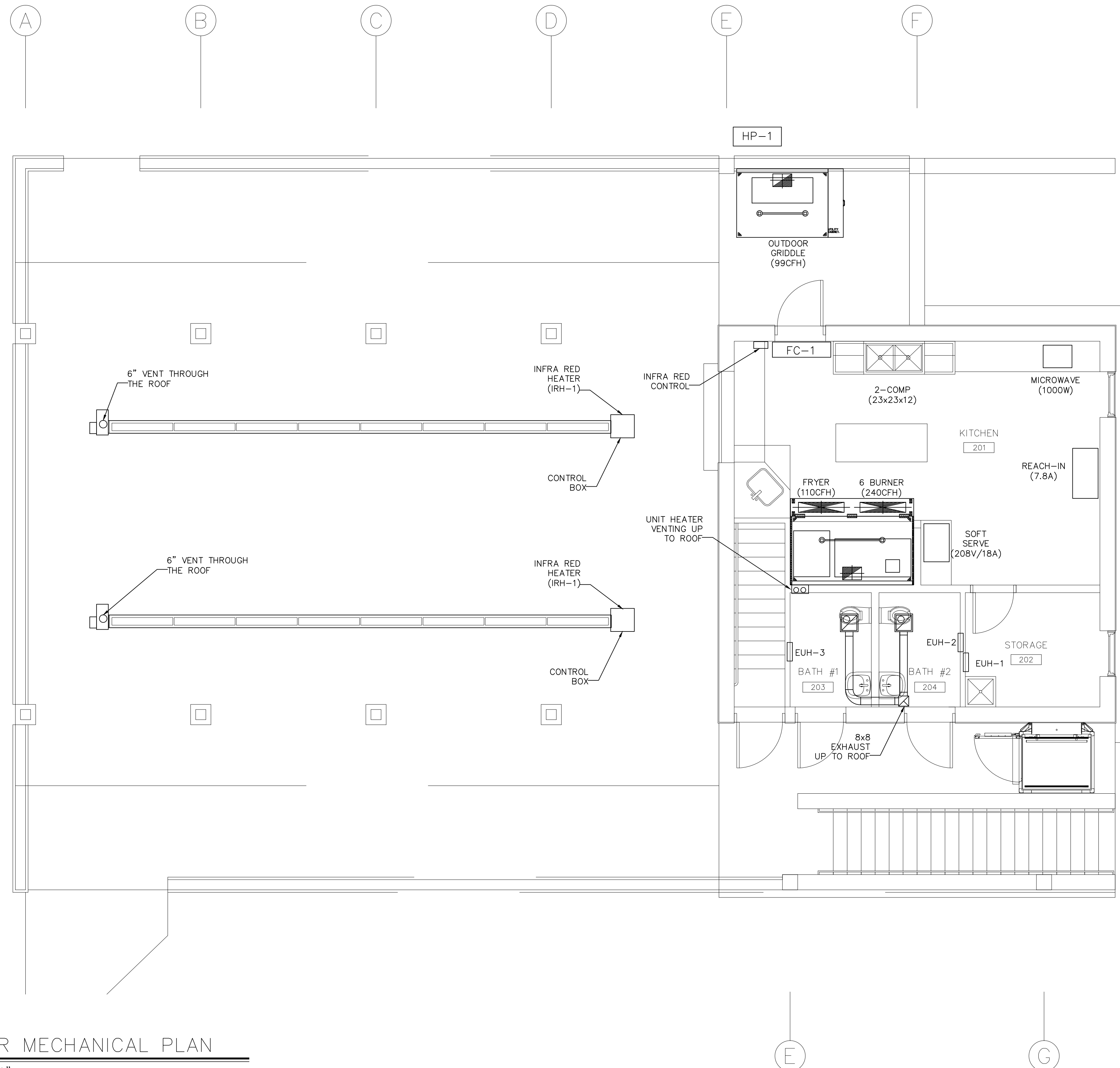
PROJECT #: 21-08

DRAWN BY:

CAD FILE: 21-08/P:/BID

DRAWING#:

M-2



- PLAN NOTES:
1. ALL SUPPLY, RETURN AND EXHAUST AIR DUCTS AND PLENUMS LOCATED IN UNCONDITIONED SPACES SHALL BE FULLY INSULATED AND EXTERNALLY WRAPPED WITH A MINIMUM OF R-6 FOIL BACK INSULATION. INCLUDE MASTIC SEALING OF ALL JOINTS AND SEAMS.
 2. ALL DUCTWORK HAS BEEN SIZED IN ACCORDANCE WITH THE ASHRAE HANDBOOK OF FUNDAMENTALS.
 3. ALL AIRSIDE SYSTEMS SHALL BE BALANCED AND A CERTIFIED REPORT PROVIDED.
 4. ALL JOINTS, LONGITUDINAL AND TRANSVERSE SEAMS AND CONNECTIONS IN DUCTWORK SHALL BE SECURELY FASTENED AND SEALED WITH WELDS, GASKETS, MASTICS (ADHESIVES), MASTIC-PLUS-EMBEDDED-FABRIC SYSTEMS, LIQUID SEALANTS OR TAPES. TAPES AND MASTICS USED TO SEAL METALLIC AND FLEXIBLE AIR DUCTS AND FLEXIBLE AIR CONNECTORS SHALL COMPLY WITH UL 181B AND SHALL BE MARKED '181 B-FX' FOR PRESSURE-SENSITIVE TAPE OR '181 B-M' FOR MASTIC. DUCT CONNECTIONS TO FLANGES OF AIR DISTRIBUTION SYSTEM EQUIPMENT SHALL BE SEALED AND MECHANICALLY FASTENED. MECHANICAL FASTENERS FOR USE WITH FLEXIBLE NONMETALLIC AIR DUCTS SHALL COMPLY WITH UL 181B AND SHALL BE MARKED '181 B-C.' CLOSURE SYSTEMS USED TO SEAL ALL DUCTWORK SHALL BE INSTALLED IN ACCORDANCE WITH THE MANUFACTURER'S INSTRUCTIONS.
 5. DUCTS SHALL BE SUPPORTED IN ACCORDANCE WITH SMACNA HVAC DUCT CONSTRUCTION STANDARDS-METAL AND FLEXIBLE. FLEXIBLE AND OTHER FACTORY-MADE DUCTS SHALL BE SUPPORTED IN ACCORDANCE WITH THE MANUFACTURER'S INSTRUCTIONS.
 6. THE PRESSURE CLASSIFICATION OF DUCTS SHALL EQUAL OR EXCEED THE DESIGN PRESSURE OF THE AIR DISTRIBUTION IN WHICH THE DUCTS ARE UTILIZED.
 7. VERIFY LOCATIONS OF ALL THERMOSTATS AND SENSORS WITH ARCHITECT PRIOR TO INSTALLATION.
 8. ROUND EXHAUST BRANCH DUCTS SHALL BE GALVANIZED METAL.
 9. PROVIDE ACCESS DOORS FOR ALL DAMPERS WITHIN INACCESSIBLE CEILINGS.
 10. EXTERNAL DUCT INSULATION, EXCEPT SPRAY POLYURETHANE FOAM, AND FACTORY-INSULATED FLEXIBLE DUCT SHALL BE LEGIBLY PRINTED OR IDENTIFIED AT INTERVALS NOT GREATER THAN 36 INCHES WITH THE NAME OF THE MANUFACTURER, THE THERMAL RESISTANCE R-VALUE AT THE SPECIFIED INSTALLED THICKNESS AND THE FLAME SPREAD AND SMOKE-DEVELOPED INDEXES OF THE COMPOSITE MATERIALS. DUCT INSULATION PRODUCT R-VALUES SHALL BE BASED ON INSULATION ONLY, EXCLUDING AIR FILMS, VAPOR RETARDERS OR OTHER DUCT COMPONENTS, AND SHALL BE BASED ON TESTED C-VALUES AT 75°F MEAN TEMPERATURE AT THE INSTALLED THICKNESS, IN ACCORDANCE WITH RECOGNIZED INDUSTRY PROCEDURES.
 11. PROVIDE INSULATED REFRIGERANT LINESETS FROM HEAT PUMP TO FAN COIL UNIT. CONNECT AS PER MANUFACTURER'S INSTALLATION MANUAL.
 12. PIPING INSULATION EXPOSED TO THE WEATHER SHALL BE PROTECTED FROM DAMAGE, INCLUDING THAT CAUSED BY SUNLIGHT, MOISTURE, EQUIPMENT MAINTENANCE AND WIND, AND SHALL PROVIDE SHIELDING FROM SOLAR RADIATION THAT CAN CAUSE DEGRADATION OF THE MATERIAL. ADHESIVE TAPE SHALL NOT BE PERMITTED.
 13. ALL REFRIGERANT PIPING SHALL BE SUPPORTED OFF THE ROOF. PROVIDE PATE ROOF CURBS OR APPROVED EQUAL.
 14. ALL EQUIPMENT SHALL BE LOCATED A MINIMUM OF 4' ABOVE FLOOR. PROVIDE EQUIPMENT RAILS.

FIRST FLOOR MECHANICAL PLAN
SCALE: 1/4" = 1'-0"

DATE: 7.18.22
ISSUE: FOR BID

SEAL:

SENDEWSKI ARCHITECTS PC
ARCHITECTS - PLANNERS

215 ROANOKE AVENUE
RIVERHEAD, NY 11901
(631) 727-5352

9 SELENA COURT
WALDEN, NY 12586
(845) 275-8859

TAPPAN FIRE DISTRICT
300 WESTERN HWY S,
TAPPAN NY, 10983

FIRST FLOOR
MECHANICAL PLAN

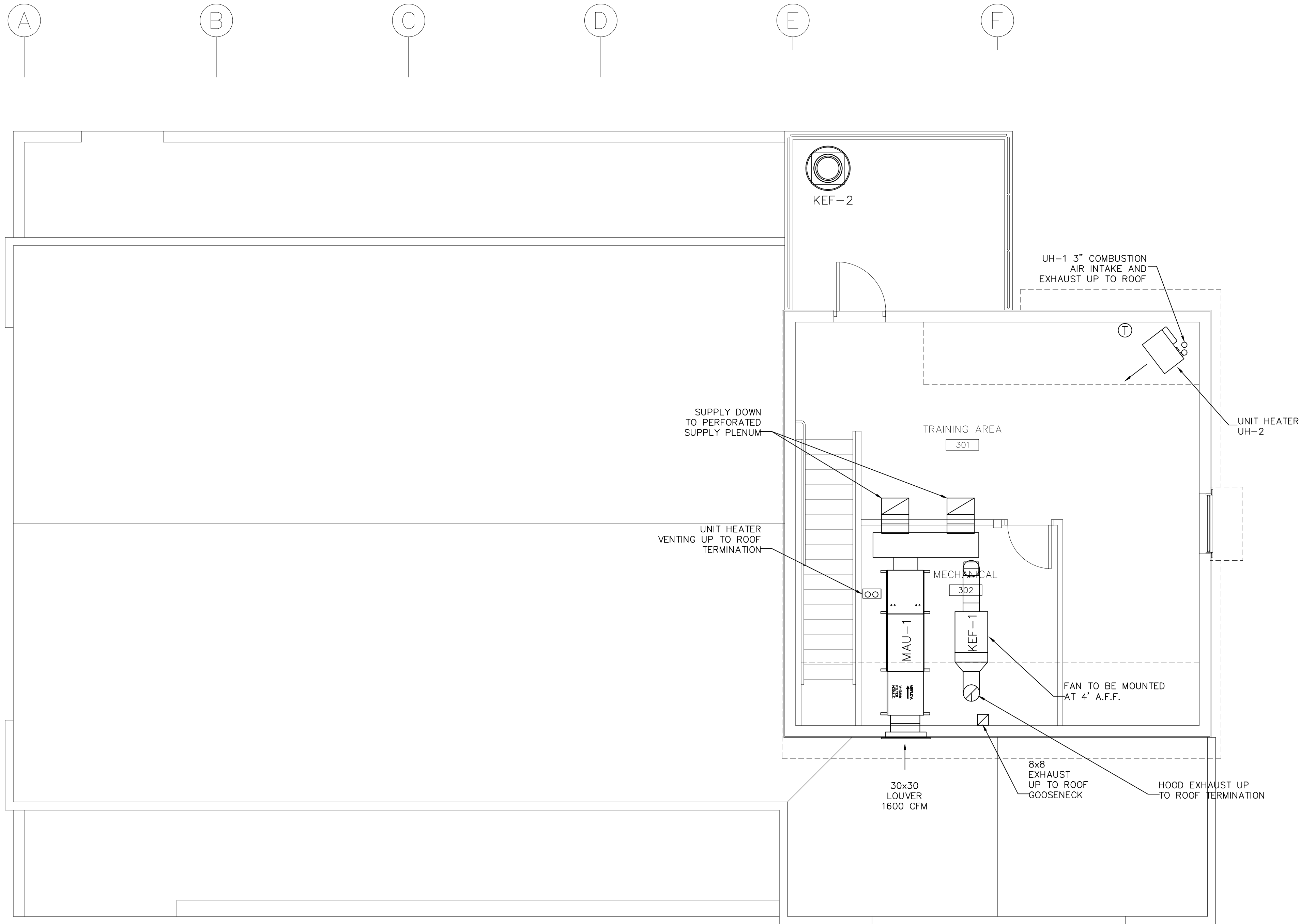
PROJECT #: 21-08

DRAWN BY:

CAD FILE: 21-08/P:/BID

DRAWING#:

M-3



- PLAN NOTES:
1. ALL SUPPLY, RETURN AND EXHAUST AIR DUCTS AND PLENUMS LOCATED IN UNCONDITIONED SPACES SHALL BE FULLY INSULATED AND EXTERNALLY WRAPPED WITH A MINIMUM OF R-6 FOIL BACK INSULATION. INCLUDE MASTIC SEALING OF ALL JOINTS AND SEAMS.
 2. ALL DUCTWORK HAS BEEN SIZED IN ACCORDANCE WITH THE ASHRAE HANDBOOK OF FUNDAMENTALS.
 3. ALL AIRSIDE SYSTEMS SHALL BE BALANCED AND A CERTIFIED REPORT PROVIDED.
 4. ALL JOINTS, LONGITUDINAL AND TRANSVERSE SEAMS AND CONNECTIONS IN DUCTWORK SHALL BE SECURELY FASTENED AND SEALED WITH WELDS, GASKETS, MASTICS (ADHESIVES), MASTIC-PLUS-EMBEDDED-FABRIC SYSTEMS, LIQUID SEALANTS OR TAPES. TAPES AND MASTICS USED TO SEAL METALLIC AND FLEXIBLE AIR DUCTS AND FLEXIBLE AIR CONNECTORS SHALL COMPLY WITH UL 181B AND SHALL BE MARKED "181 B-FX" FOR PRESSURE-SENSITIVE TAPE OR "181 B-M" FOR MASTIC. DUCT CONNECTIONS TO FLANGES OF AIR DISTRIBUTION SYSTEM EQUIPMENT SHALL BE SEALED AND MECHANICALLY FASTENED. MECHANICAL FASTENERS FOR USE WITH FLEXIBLE NONMETALLIC AIR DUCTS SHALL COMPLY WITH UL 181B AND SHALL BE MARKED "181 B-C." CLOSURE SYSTEMS USED TO SEAL ALL DUCTWORK SHALL BE INSTALLED IN ACCORDANCE WITH THE MANUFACTURER'S INSTRUCTIONS.
 5. DUCTS SHALL BE SUPPORTED IN ACCORDANCE WITH SMACNA HVAC DUCT CONSTRUCTION STANDARDS-METAL AND FLEXIBLE. FLEXIBLE AND OTHER FACTORY-MADE DUCTS SHALL BE SUPPORTED IN ACCORDANCE WITH THE MANUFACTURER'S INSTRUCTIONS.
 6. THE PRESSURE CLASSIFICATION OF DUCTS SHALL EQUAL OR EXCEED THE DESIGN PRESSURE OF THE AIR DISTRIBUTION IN WHICH THE DUCTS ARE UTILIZED.
 7. VERIFY LOCATIONS OF ALL THERMOSTATS AND SENSORS WITH ARCHITECT PRIOR TO INSTALLATION.
 8. ROUND EXHAUST BRANCH DUCTS SHALL BE GALVANIZED METAL.
 9. PROVIDE ACCESS DOORS FOR ALL DAMPERS WITHIN INACCESSIBLE CEILINGS.
 10. EXTERNAL DUCT INSULATION, EXCEPT SPRAY POLYURETHANE FOAM, AND FACTORY-INSULATED FLEXIBLE DUCT SHALL BE LEGIBLY PRINTED OR IDENTIFIED AT INTERVALS NOT GREATER THAN 36 INCHES WITH THE NAME OF THE MANUFACTURER, THE THERMAL RESISTANCE R-VALUE AT THE SPECIFIED INSTALLED THICKNESS AND THE FLAME SPREAD AND SMOKE-DEVELOPED INDEXES OF THE COMPOSITE MATERIALS. DUCT INSULATION PRODUCT R-VALUES SHALL BE BASED ON INSULATION ONLY, EXCLUDING AIR FILMS, VAPOR RETARDERS OR OTHER DUCT COMPONENTS, AND SHALL BE BASED ON TESTED C-VALUES AT 75°F MEAN TEMPERATURE AT THE INSTALLED THICKNESS, IN ACCORDANCE WITH RECOGNIZED INDUSTRY PROCEDURES.
 11. PROVIDE INSULATED REFRIGERANT LINESETS FROM HEAT PUMP TO FAN COIL UNIT. CONNECT AS PER MANUFACTURER'S INSTALLATION MANUAL.
 12. PIPING INSULATION EXPOSED TO THE WEATHER SHALL BE PROTECTED FROM DAMAGE, INCLUDING THAT CAUSED BY SUNLIGHT, MOISTURE, EQUIPMENT MAINTENANCE AND WIND, AND SHALL PROVIDE SHIELDING FROM SOLAR RADIATION THAT CAN CAUSE DEGRADATION OF THE MATERIAL. ADHESIVE TAPE SHALL NOT BE PERMITTED.
 13. ALL REFRIGERANT PIPING SHALL BE SUPPORTED OFF THE ROOF. PROVIDE PATE ROOF CURBS OR APPROVED EQUAL.
 14. ALL EQUIPMENT SHALL BE LOCATED A MINIMUM OF 4' ABOVE FLOOR. PROVIDE EQUIPMENT RAILS.

UPPER LEVEL MECHANICAL PLAN

SCALE: 1/4" = 1'-0"

DATE: 7.18.22
ISSUE: FOR BID

SEAL:

SENDEWSKI ARCHITECTS PC
ARCHITECTS - PLANNERS
215 ROANOKE AVENUE
RIVERHEAD, NY 11901
(631) 727-5352
9 SELENA COURT
WALDEN, NY 12586
(845) 275-8859

TAPPAN FIRE DISTRICT
300 WESTERN HWY S,
TAPPAN NY, 10983

UPPER LEVEL
MECHANICAL PLAN

PROJECT #: 21-08

DRAWN BY:

CAD FILE: 21-08/P:/BID

DRAWING#:

M-4

FOR QUESTIONS, CALL THE
Long Island Office
REGION 43
PHONE: (516) 513-5398
EMAIL: reg43@captivaire.com

PATENT NUMBERS
AC-PSP (UNITED STATES) - US PATENT 7963830 B2.
AC-PSP WALL (CANADA) - CA PATENT 2802059.
AC-PSP ISLAND (CANADA) - CA PATENT 2520330.
EXHAUST HOODS ND-E/BD-E/SND-E (CANADA) - CA PATENT 2520435 C.

HOOD INFORMATION - JOB#5561448

HOOD NO	TAG	MODEL	MANUFACTURER	LENGTH	MAX COOKING TEMP	TYPE	APPLIANCE DUTY	DESIGN CFM/FT	TOTAL EXH CFM	EXHAUST PLENUM RISER(S)							TOTAL SUPPLY CFM	HOOD CONSTRUCTION	HOOD CONFIG	
										WIDTH	LENG	HEIGHT	DIA	CFM	VEL	SP			END TO END	ROW
1	Kitchen	5424 ND-2-PSP-F	CAPTIVEAIRE	7' 11"	600 DEG	I	HEAVY	200	1583	10"	15"	4"		1583	1520	-0.627"	1266	430 SS WHERE EXPOSED	ALONE	ALONE
2	BBQ	5424 ND-2	CAPTIVEAIRE	6' 0"	600 DEG	I	HEAVY	275	1650	10"	15"	4"		1650	1584	-0.729"	0	430 SS WHERE EXPOSED	ALONE	ALONE

HOOD INFORMATION

HOOD NO	TAG	FILTER(S)				LIGHT(S)				UTILITY CABINET(S)				ELECTRICAL	SWITCHES	FIRE SYSTEM	HOOD HANGING WEIGHT
		TYPE	QTY	HEIGHT	LENGTH	EFFICIENCY @ 7 MICRONS	QTY	TYPE	WIRE GUARD	LOCATION	SIZE	TYPE	SIZE				
1	Kitchen	CAPTRATE SOLID FILTER	5	20"	16"	85% SEE FILTER SPEC	2	RECESSED ROUND	ND	WALL MNT	12"x48"x24"	TANK FS	4.0/4.0			YES	417 LBS
2	BBQ	CAPTRATE SOLID FILTER	4	20"	16"	85% SEE FILTER SPEC	2	RECESSED ROUND	ND	RIGHT	12"x54"x24"	TANK FS	4.0/4.0			YES	605 LBS

HOOD OPTIONS

HOOD NO	TAG	OPTION
1	Kitchen	FIELD WRAPPER 18.00" HIGH FRONT.
		BACKSPASH 80.00" HIGH X 97.00" LONG 430 SS VERTICAL.
		LEFT SIDESPLASH 80.00" HIGH X 54.00" LONG 430 SS VERTICAL.
		RIGHT SIDESPLASH 80.00" HIGH X 54.00" LONG 430 SS VERTICAL.
		LEFT END STANDOFF (FINISHED) 1" WIDE 54" LONG INSULATED.
		RIGHT END STANDOFF (FINISHED) 1" WIDE 54" LONG INSULATED.
		BACKSPASH - INSIDE CORNER 80.00" HIGH X 2.00" LEG LENGTH 430 SS VERTICAL.
		BACKSPASH - INSIDE CORNER 80.00" HIGH X 2.00" LEG LENGTH 430 SS VERTICAL.
		SENSOR-CV.
		SENSOR-CV.
2	BBQ	FIELD WRAPPER 18.00" HIGH FRONT, LEFT, RIGHT.
		SENSOR-CV.

PERFORATED SUPPLY PLENUM(S)

HOOD NO	TAG	POS	LENGTH	WIDTH	HEIGHT	TYPE	RISER(S)				
							WIDTH	LENG	DIA	CFM	SP
1	Kitchen	Front	97'	14'	6'	MJA	8"	36"		633	0.179"
						MJA	8"	36"		633	0.179"

WALL-MOUNT UTILITY CABINET

HOOD NO	LOCATION	SIZE	UTILITY CABINET(S)				WEIGHT
			TYPE	SIZE	MODEL #	QUANTITY	
1	WALL MNT	12"x48"x24"	TANK FS	4.0/4.0			300.00 LBS

FIRE SYSTEM INFORMATION - JOB#5561448

FIRE SYSTEM NO	TAG	TYPE	SIZE	FLOW POINTS	INSTALLATION	
					SYSTEM	LOCATION ON HOOD
1		TANK FS	4.0/4.0	23	WALL UTILITY CABINET LEFT	N/A
2		TANK FS	4.0/4.0	23	FIRE CABINET RIGHT	RIGHT, HOOD 2

GAS VALVE(S)

FIRE SYSTEM NO	TAG	TYPE	SIZE	SUPPLIED BY
1		SC ELECTRICAL	2.000	CAPTIVEAIRE SYSTEMS
2		SC ELECTRICAL	2.000	CAPTIVEAIRE SYSTEMS

FIRE SYSTEM PARTS LIST KEY

FIRE SYSTEM NO	TAG	KEY NUMBER - PART DESCRIPTION	QTY BY FACTORY	QTY BY DIST
1		0 - 0 - 12-F28021-32144-DT-360 DUCT FIRE THERMOSTAT WITH 12 FOOT WIRE LEADS. ND, CLOSE ON TEMP RISE AT 360°F.	1	0
		0 - 0 - 87-120042-001 SECONDARY ACTUATOR VALVE (SVA) - SINGLE ACTUATOR, REQUIRES PRIMARY RELEASE ACTUATOR, TANK FIRE SUPPRESSION.	1	0
		0 - 0 - 87-120045-001 HOSE, SECONDARY ACTUATOR HOSE, 7.5' BRAIDED STAINLESS STEEL, TANK FIRE SUPPRESSION.	1	0
		0 - 0 - 87-300001-001 TANK - PRESSURIZED TANK USED FOR TANK FIRE SUPPRESSION.	2	0
		0 - 0 - 87-300030-001 PRIMARY ACTUATOR KIT (PAK) - ACTUATOR AND RELEASE SOLENOID ASSEMBLY, ONE NEEDED PER FIRE SYSTEM, SUPERVISED, TANK FIRE SUPPRESSION.	1	0
		0 - 0 - 87-300152-001 HARDWARE, SVA BOLTS, TANK FIRE SUPPRESSION.	8	0
		0 - 0 - 98694A115 HARDWARE, DATANKLOCK LOCKING BRACKET SQUARE NUTS 5/16" ZINC, TANK FIRE SUPPRESSION.	4	0
		0 - 0 - A0034332 JUNCTION BOX FOR MANUAL PULL STATION. 15" DEEP BACK BOX, RED COLOR.	1	0
		0 - 0 - DATANKLOCK DISCHARGE ADAPTER TANK LOCKING PLATE FOR FIRE SYSTEM TANK INSTALLATION IN UTILITY CABINETS, TANK FIRE SUPPRESSION.	2	0
		0 - 0 - SLPDCN-30FT SUPERVISED LOOP CONNECTION KIT. CONTAINS THE PARTS NEEDED TO CONNECT THE SUPERVISED LOOP BETWEEN HOODS WITH UP TO 29' GAP. KIT CONTAINS 32 FEET OF BLACK MG WIRE, 32 FEET OF TAN MG WIRE, 30 FEET OF FLEXIBLE CONDUIT, AND TWO 7/8" CONNECTORS.	2	0
		0 - 0 - TANK STRAP TANK STRAP - USED FOR TANK FIRE SUPPRESSION.	6	0
		0 - 0 - TFS-UCTANKBRACKET TANK BRACKET FOR FIRE SYSTEM TANK INSTALLATION IN UTILITY CABINETS, TANK FIRE SUPPRESSION.	2	0
		0 - 0 - WK-283952-000 DISCHARGE ADAPTER, TANK FIRE SUPPRESSION.	2	0
		34 - 34 - A0034331 24VDC SINGLE ACTION MANUAL ACTUATION DEVICE (PUSH/PULL STATION) WITH PROTECTIVE COVER, ONE (1) NORMALLY OPEN CONTACT. RED COLOR.	1	0
		0 - 0 - 12-F28021-32144-DT-360 DUCT FIRE THERMOSTAT WITH 12 FOOT WIRE LEADS. ND, CLOSE ON TEMP RISE AT 360°F.	1	0
		0 - 0 - 87-120042-001 SECONDARY ACTUATOR VALVE (SVA) - SINGLE ACTUATOR, REQUIRES PRIMARY RELEASE ACTUATOR, TANK FIRE SUPPRESSION.	1	0
		0 - 0 - 87-120045-001 HOSE, SECONDARY ACTUATOR HOSE, 7.5' BRAIDED STAINLESS STEEL, TANK FIRE SUPPRESSION.	1	0
		0 - 0 - 87-300001-001 TANK - PRESSURIZED TANK USED FOR TANK FIRE SUPPRESSION.	2	0
2		0 - 0 - 87-300030-001 PRIMARY ACTUATOR KIT (PAK) - ACTUATOR AND RELEASE SOLENOID ASSEMBLY, ONE NEEDED PER FIRE SYSTEM, SUPERVISED, TANK FIRE SUPPRESSION.	1	0
		0 - 0 - 87-300152-001 HARDWARE, SVA BOLTS, TANK FIRE SUPPRESSION.	8	0
		0 - 0 - 98694A115 HARDWARE, DATANKLOCK LOCKING BRACKET SQUARE NUTS 5/16" ZINC, TANK FIRE SUPPRESSION.	4	0
		0 - 0 - A0034332 JUNCTION BOX FOR MANUAL PULL STATION. 15" DEEP BACK BOX, RED COLOR.	1	0
		0 - 0 - DATANKLOCK DISCHARGE ADAPTER TANK LOCKING PLATE FOR FIRE SYSTEM TANK INSTALLATION IN UTILITY CABINETS, TANK FIRE SUPPRESSION.	2	0
		0 - 0 - TANK STRAP TANK STRAP - USED FOR TANK FIRE SUPPRESSION.	6	0
		0 - 0 - TFS-UCTANKBRACKET TANK BRACKET FOR FIRE SYSTEM TANK INSTALLATION IN UTILITY CABINETS, TANK FIRE SUPPRESSION.	2	0
		0 - 0 - WK-283952-000 DISCHARGE ADAPTER, TANK FIRE SUPPRESSION.	2	0
		34 - 34 - A0034331 24VDC SINGLE ACTION MANUAL ACTUATION DEVICE (PUSH/PULL STATION) WITH PROTECTIVE COVER, ONE (1) NORMALLY OPEN CONTACT. RED COLOR.	1	0
		ADDITIONAL PARTS TO BE DETERMINED.		

SPECIFICATION: CAPTRATE® GREASE-STOP® SOLID FILTER

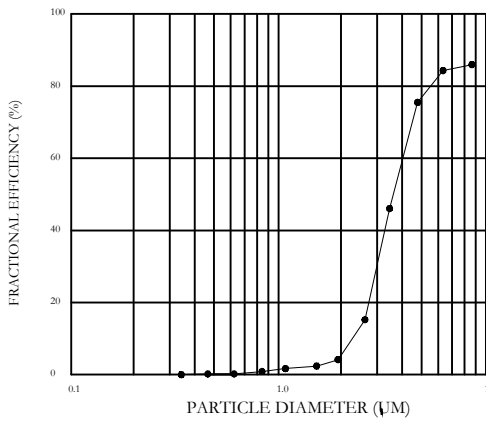
THE CAPTRATE GREASE-STOP SOLID FILTER IS A SINGLE-STAGE FILTER FEATURING A UNIQUE S-Baffle DESIGN IN CONJUNCTION WITH A SLOTTED REAR Baffle DESIGN, TO DELIVER EXCEPTIONAL FILTRATION EFFICIENCY.

FILTER IS STAINLESS STEEL CONSTRUCTION, AND SIZED TO FIT INTO STANDARD 2-INCH DEEP HOOD CHANNEL(S).

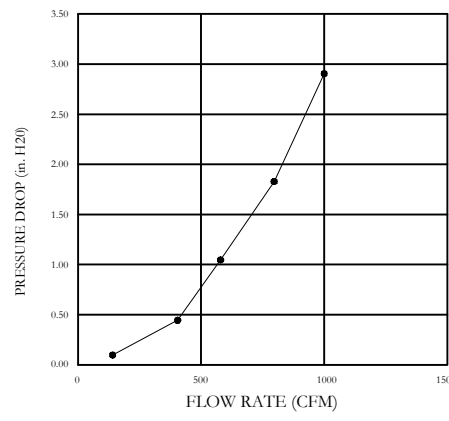
UNITS SHALL INCLUDE STAINLESS STEEL HANDLES AND A FASTENING DEVICE TO SECURE THE TWO COMPONENTS WHEN ASSEMBLED.

GREASE EXTRACTION EFFICIENCY PERFORMANCE SHALL REMOVE AT LEAST 75% OF GREASE PARTICLES FIVE MICRONS IN SIZE, AND 50% GREASE PARTICLES SEVEN MICRONS IN SIZE AND LARGER, WITH A CORRESPONDING PRESSURE DROP NOT TO EXCEED 1.0 INCHES OF WATER GAUGE. THE CAPTRATE GREASE-STOP SOLID WAS TESTED TO ASTM STANDARD ASTM F2519-05. MANUFACTURER APPROVED FOR USE IN SOLID FUEL APPLICATIONS AS A SPARK ARRESTER.

EFFICIENCY VS. PARTICLE DIAMETER



PRESSURE DROP VS. FLOW RATE



CAPTRATE FILTERS ARE BUILT IN COMPLIANCE WITH:

NFPA #96
NSF STANDARD #2
UL STANDARD #1046
INT. MECH. CODE (IMC)
ULC-S649.



SYSTEM DESIGN VERIFICATION (SDV)

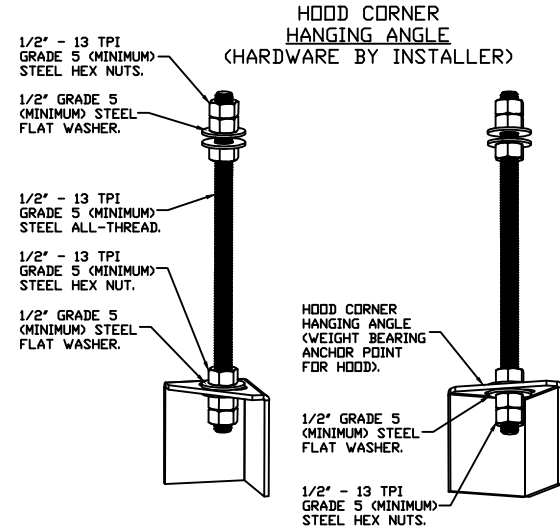
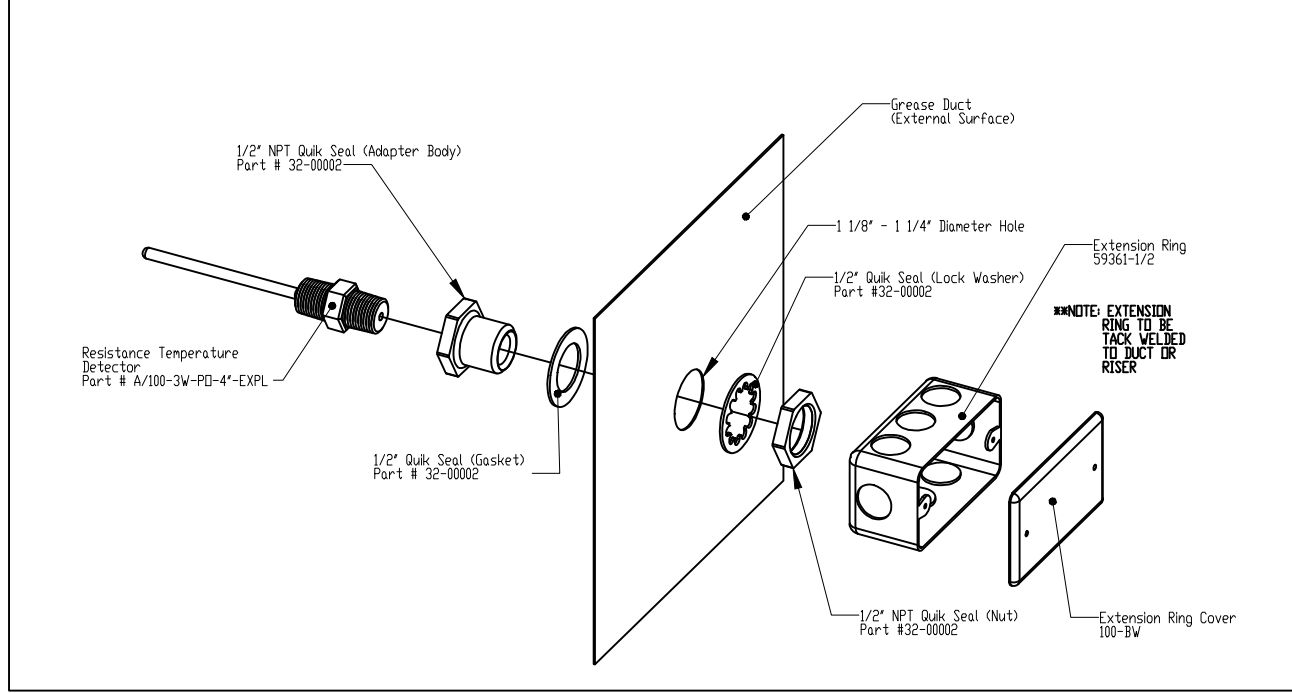
IF ORDERED, CAS SERVICE WILL PERFORM A SYSTEM DESIGN VERIFICATION (SDV) ONCE ALL EQUIPMENT HAS HAD A COMPLETE START UP PER THE OPERATION AND INSTALLATION MANUAL. TYPICALLY, THE SDV WILL BE PERFORMED AFTER ALL INSPECTIONS ARE COMPLETE.

ANY FIELD RELATED DISCREPANCIES THAT ARE DISCOVERED DURING THE SDV WILL BE BROUGHT TO THE ATTENTION OF THE GENERAL CONTRACTOR AND CORRESPONDING TRADES ON SITE. THESE ISSUES WILL BE DOCUMENTED AND FORWARDED TO THE APPROPRIATE SALES OFFICE. IF CAS SERVICE HAS TO RESOLVE A DISCREPANCY THAT IS A FIELD ISSUE, THE GENERAL CONTRACTOR WILL BE NOTIFIED AND CHARGES. SHOULD A RETURN TRIP BE REQUIRED DUE TO ANY FIELD RELATED DISCREPANCY THAT CANNOT BE RESOLVED DURING THE SDV, THERE WILL BE ADDITIONAL TRIP CHARGES.

DURING THE SDV, CAS SERVICE WILL ADDRESS ANY DISCREPANCY THAT IS THE FAULT OF THE MANUFACTURER. SHOULD A RETURN TRIP BE REQUIRED, THE GENERAL CONTRACTOR AND APPROPRIATE SALES OFFICE WILL BE NOTIFIED. THERE WILL BE NO ADDITIONAL CHARGES FOR MANUFACTURER DISCREPANCIES.

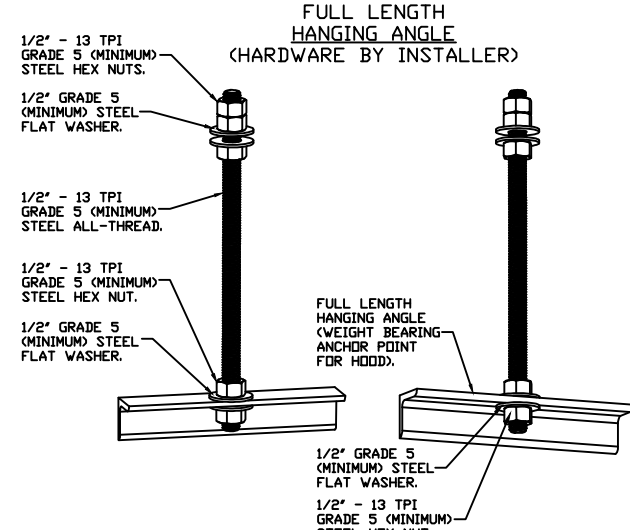
RTD SENSOR INSTALLATION (IF NOT FACTORY INSTALLED)

NOTES: One RTD per Exhaust Fan.
RTD has 3 wires that connect to control cabinet



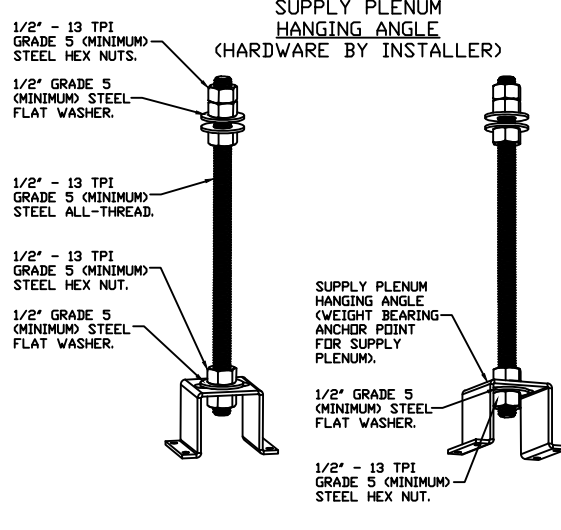
ASSEMBLY INSTRUCTIONS

HANGING ANGLE MUST BE SUPPORTED WITH 1/2" - 13 TPI GRADE 5 (MINIMUM) ALL-THREAD. SANDWICH HANGING ANGLES AND CEILING ANCHOR POINTS WITH 1/2" GRADE 5 (MINIMUM) STEEL FLAT WASHERS AND 1/2" - 13 TPI GRADE 5 (MINIMUM) HEX NUTS AS SHOWN. MUST USE DOUBLED HEX NUT CONFIGURATION BENEATH HOOD HANGING ANGLES AND ABOVE CEILING ANCHORS. MAINTAIN 1/4" OF EXPOSED THREADS BENEATH BOTTOM HEX NUT. TORQUE ALL HEX NUTS TO 57 FT-LBS.



ASSEMBLY INSTRUCTIONS

HANGING ANGLE MUST BE SUPPORTED WITH 1/2" - 13 TPI GRADE 5 (MINIMUM) ALL-THREAD. SANDWICH HANGING ANGLES AND CEILING ANCHOR POINTS WITH 1/2" GRADE 5 (MINIMUM) STEEL FLAT WASHERS AND 1/2" - 13 TPI GRADE 5 (MINIMUM) HEX NUTS AS SHOWN. MUST USE DOUBLED HEX NUT CONFIGURATION ABOVE CEILING ANCHORS. SINGLE HEX NUT BENEATH HANGING ANGLE IS ACCEPTABLE FOR FULL LENGTH HANGING ANGLES. MAINTAIN 1/4" OF EXPOSED THREADS BENEATH BOTTOM HEX NUT. TORQUE ALL HEX NUTS TO 57 FT-LBS.



ASSEMBLY INSTRUCTIONS

HANGING ANGLE MUST BE SUPPORTED WITH 1/2" - 13 TPI GRADE 5 (MINIMUM) ALL-THREAD. SANDWICH HANGING ANGLES AND CEILING ANCHOR POINTS WITH 1/2" GRADE 5 (MINIMUM) STEEL FLAT WASHERS AND 1/2" - 13 TPI GRADE 5 (MINIMUM) HEX NUTS AS SHOWN. MUST USE DOUBLED HEX NUT CONFIGURATION ABOVE CEILING ANCHORS. SINGLE HEX NUT BENEATH HANGING ANGLE IS ACCEPTABLE FOR PSP HANGING ANGLES. MAINTAIN 1/4" OF EXPOSED THREADS BENEATH BOTTOM HEX NUT. TORQUE ALL HEX NUTS TO 57 FT-LBS.

DATE: ISSUE
7.18.22 FOR BID

SEAL:

SENDELEWSKI ARCHITECTS PC
ARCHITECTS - PLANNERS
215 ROANOKE AVENUE
RIVERHEAD, NY 11901
(631) 727-5352
9 SELENA COURT
WALDEN, NY 12586
(845) 275-8859

TAPPAN FIRE DISTRICT
300 WESTERN HWY S,
TAPPAN NY, 10983

MECHANICAL KITCHEN HOOD
SCHEDULES

PROJECT #: 21-08

DRAWN BY:

CAD FILE: 21-08/P:/BID

DRAWING#:

M-5

DATE: 7.18.22
ISSUE: FOR BID

SEAL:

SENDEWSKI ARCHITECTS PC
ARCHITECTS - PLANNERS
215 ROANOKE AVENUE
RIVERHEAD, NY 11901
(631) 727-5352
9 SELENA COURT
WALDEN, NY 12586
(845) 275-8859

TAPPAN FIRE DISTRICT
300 WESTERN HWY S,
TAPPAN NY, 10983

MECHANICAL KITCHEN EQUIPMENT
SCHEDULES

PROJECT #: 21-08

DRAWN BY:

CAD FILE: 21-08/P:/BID

DRAWING#:

M-6

EXHAUST FAN INFORMATION – JOB#5561448

FAN UNIT NO	TAG	QTY	FAN UNIT MODEL #	MANUFACTURER	CFM	ESP	RPM	MOTOR ENCL	HP	BHP	PHASE	VOLT	FLA	DISCHARGE VELOCITY	WEIGHT (LBS)	SDNES
1	KITCHEN EXH	1	SIF13DD	CAPTIVEAIRE	1583	1.750	2220	TEFC,PREMIUM	1.500	0.8520	3	208	4.5		208	21
3	BBQ EXH	1	DU85HFA	CAPTIVEAIRE	1650	1.250	1419	DDP	0.750	0.5160	3	208	2.6	522 FPM	94	13.6

MUA FAN INFORMATION – JOB#5561448

FAN UNIT NO	TAG	QTY	FAN UNIT MODEL #	BLOWER	HOUSING	MIN CFM	DESIGN CFM	ESP	RPM	MOTOR ENCL	HP	BHP	PHASE	VOLT	FLA	MCA	MDCP	WEIGHT (LBS)	SDNES
2	KITCHEN MUA	1	A1-D.500-1SD	15MF-1-MOD	A1-D.500	1000	1266	0.500	1536	DDP	0.750	0.5530	3	208	2.5	3.2A	15A	553	13.1

GAS FIRED MAKE-UP AIR UNIT(S)

FAN UNIT NO	TAG	INPUT BTUs	OUTPUT BTUs	TEMP RISE	REQUIRED INPUT GAS PRESSURE	GAS TYPE	BURNER EFFICIENCY(%)
2	KITCHEN MUA	87915	80882	60°F	7 IN. W.C. – 14 IN. W.C.	NATURAL	92

FAN OPTIONS

FAN UNIT NO	TAG	QTY	DESCRIPTION
1	KITCHEN EXH	1	SIF 13- SS LOW SP STRAIGHT DISCHARGE- SQUARE TO ROUND DISCHARGE ADAPTER
		1	SIF13 – INLET – STANDARD 14” DUCT CONNECTION
		1	SIF – HORIZONTAL OVERHEAD MOUNT – PRE-INSTALLED MOUNTS (11-36)
		1	HANGING SPRING VIBRATION ISOLATORS (SET OF 4), FOR INDOOR OR OUTDOOR USE WITH SQUARE INLINE FANS (HSA125)
		1	2 YEAR PARTS WARRANTY
2	KITCHEN MUA	1	INLET PRESSURE GAUGE, 0-35”
		1	MANIFOLD PRESSURE GAUGE, -5 TO 15” WC
		1	LOW FIRE START
		1	SHIP LODGE GAS STRAINER 3/4”
		1	AC INTERLOCK RELAY – 24VAC COIL
		1	MOTORIZED BACKDRAFT DAMPER FOR A1-D HOUSING – MEETS AMCA CLASS 1A RATING
		1	INSULATION OPTION FOR VBANK FILTER SECTION
		1	DF1 INDOOR HANGING OPTION – INCLUDES 2 HSA125 HANGING SPRING ISOLATORS PER UNI-STRUT
		1	SEPARATE 120V WIRING PACKAGE (REQUIRED AND USED ONLY FOR DCV OR PREWIRE WITH VFD) – THREE PHASE ONLY
		1	2 YEAR PARTS WARRANTY
		1	GREASE BOX
		1	2 YEAR PARTS WARRANTY
3	BBQ EXH		

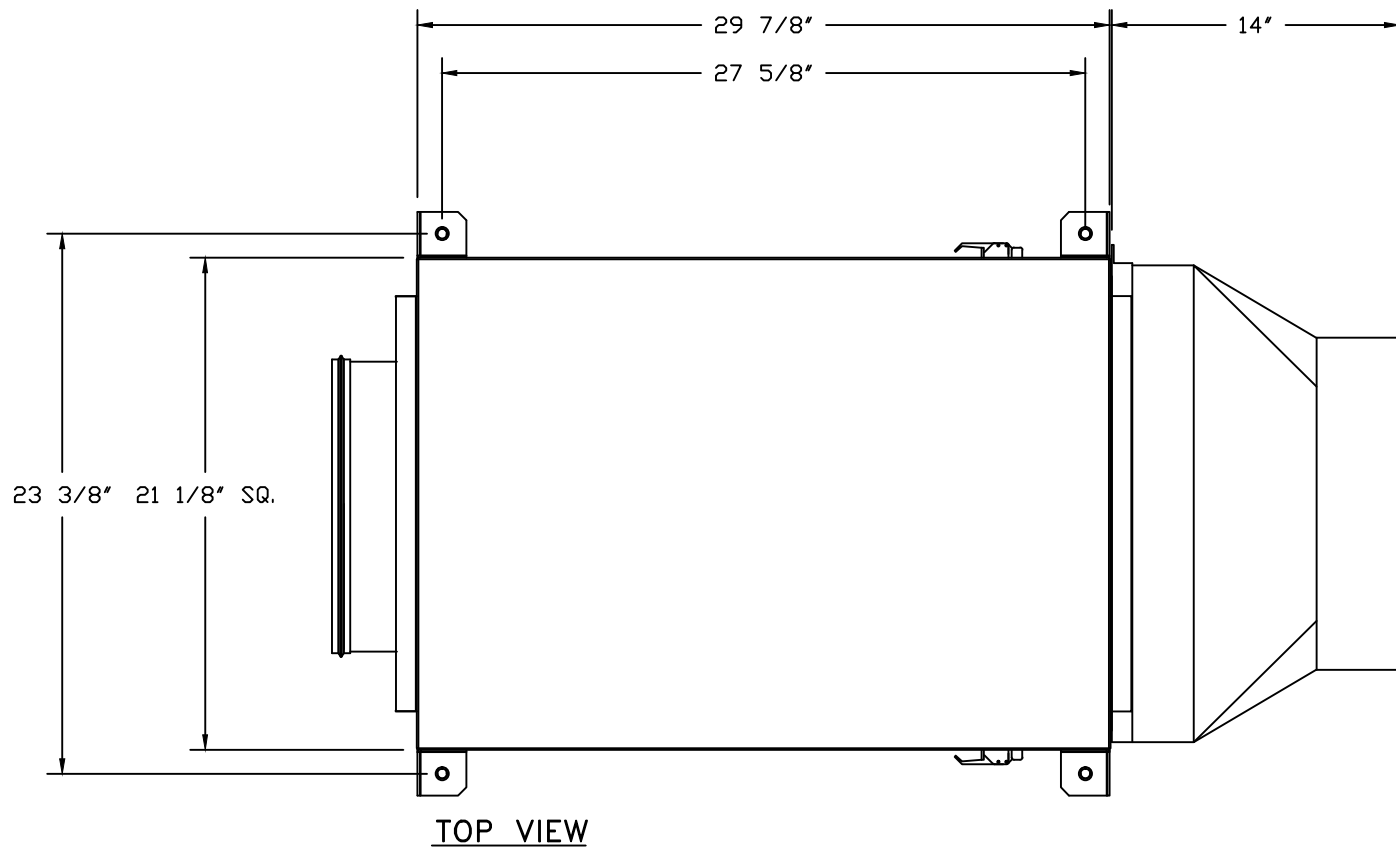
FAN ACCESSORIES

FAN UNIT NO	TAG	EXHAUST			SUPPLY		
		GREASE CUP	GRAVITY DAMPER	WALL MOUNT	SIDE DISCHARGE	GRAVITY DAMPER	MOTORIZED DAMPER
1	KITCHEN EXH						
2	KITCHEN MUA				YES		YES
3	BBQ EXH	YES					

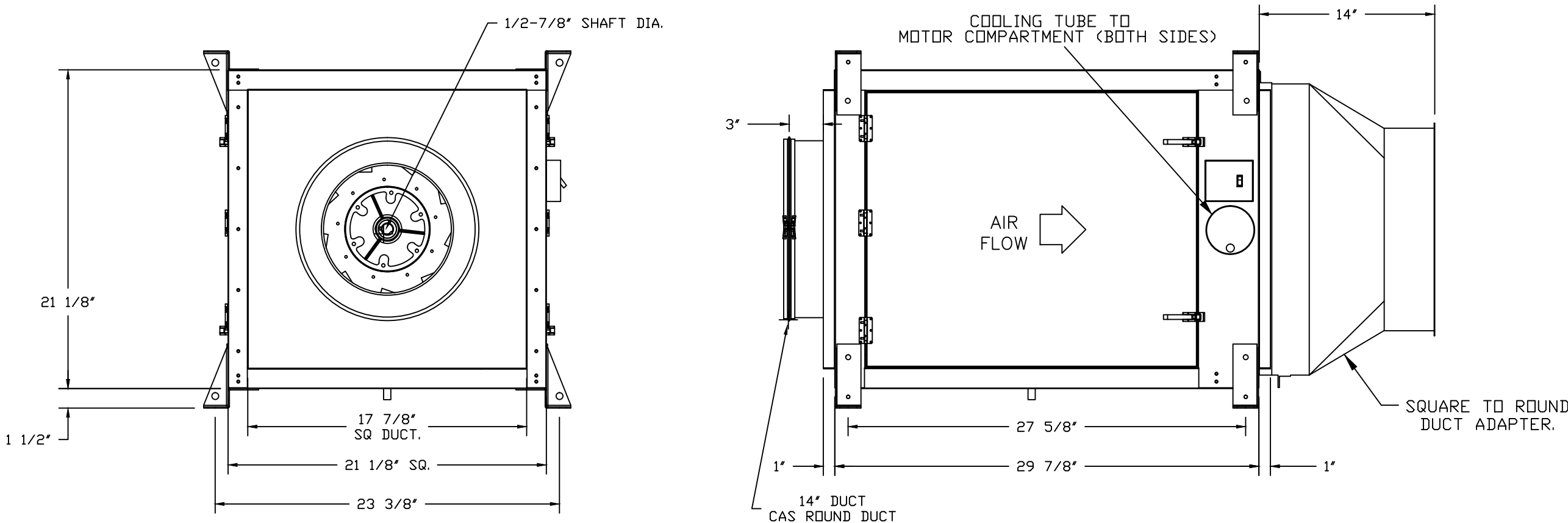
CURB ASSEMBLIES

ND	DN FAN	TAG	WEIGHT	ITEM	SIZE
3	# 3	VERIFY PITCH	36 LBS	CURB	23.000”W X 23.000”L X 20.000”H 4.000/12.000 PITCH ALONG LENGTH, RIGHT VENTED HINGED.

FAN #1 SIF13DD-HESS-UL762 – EXHAUST FAN (KITCHEN EXH)



TOP VIEW

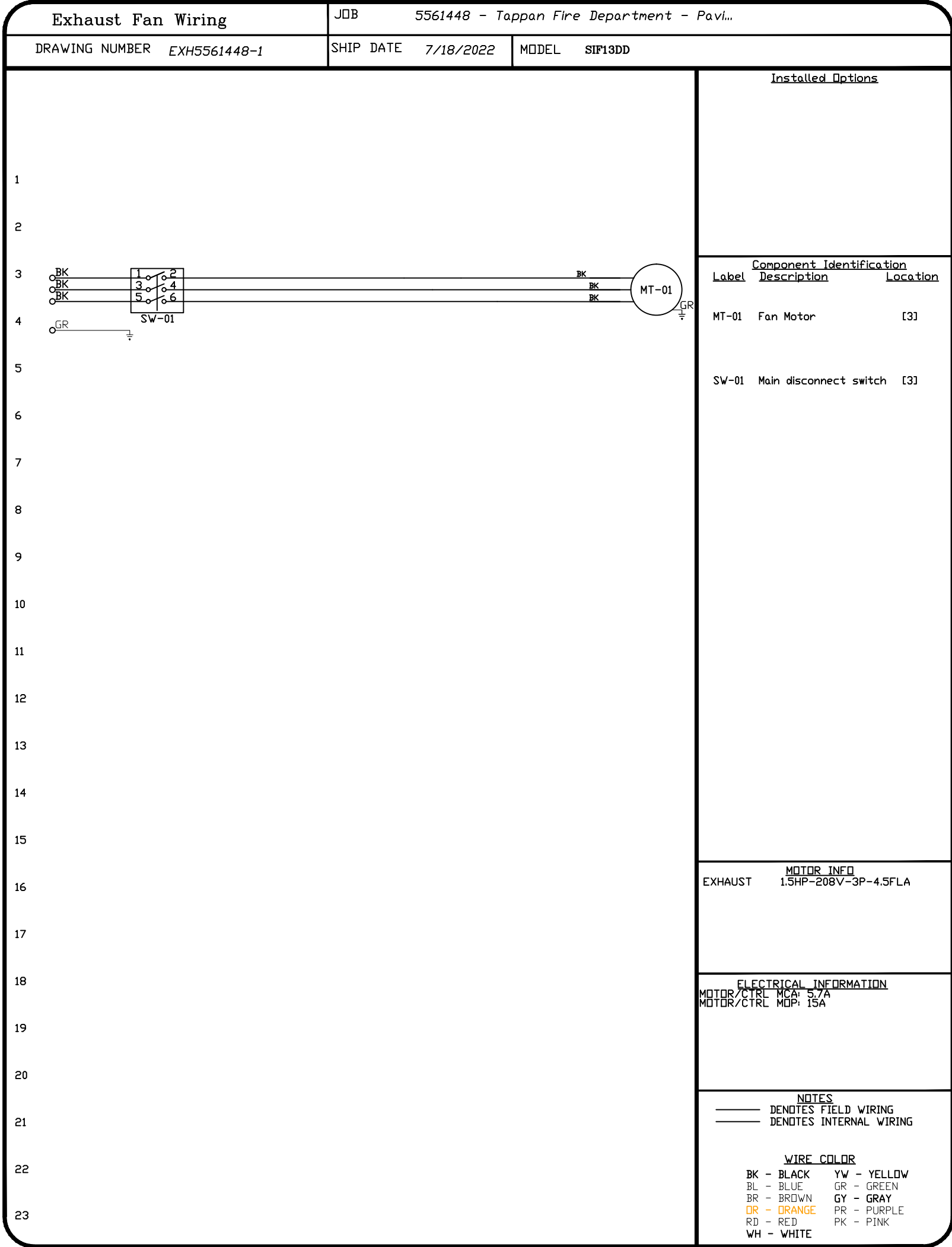


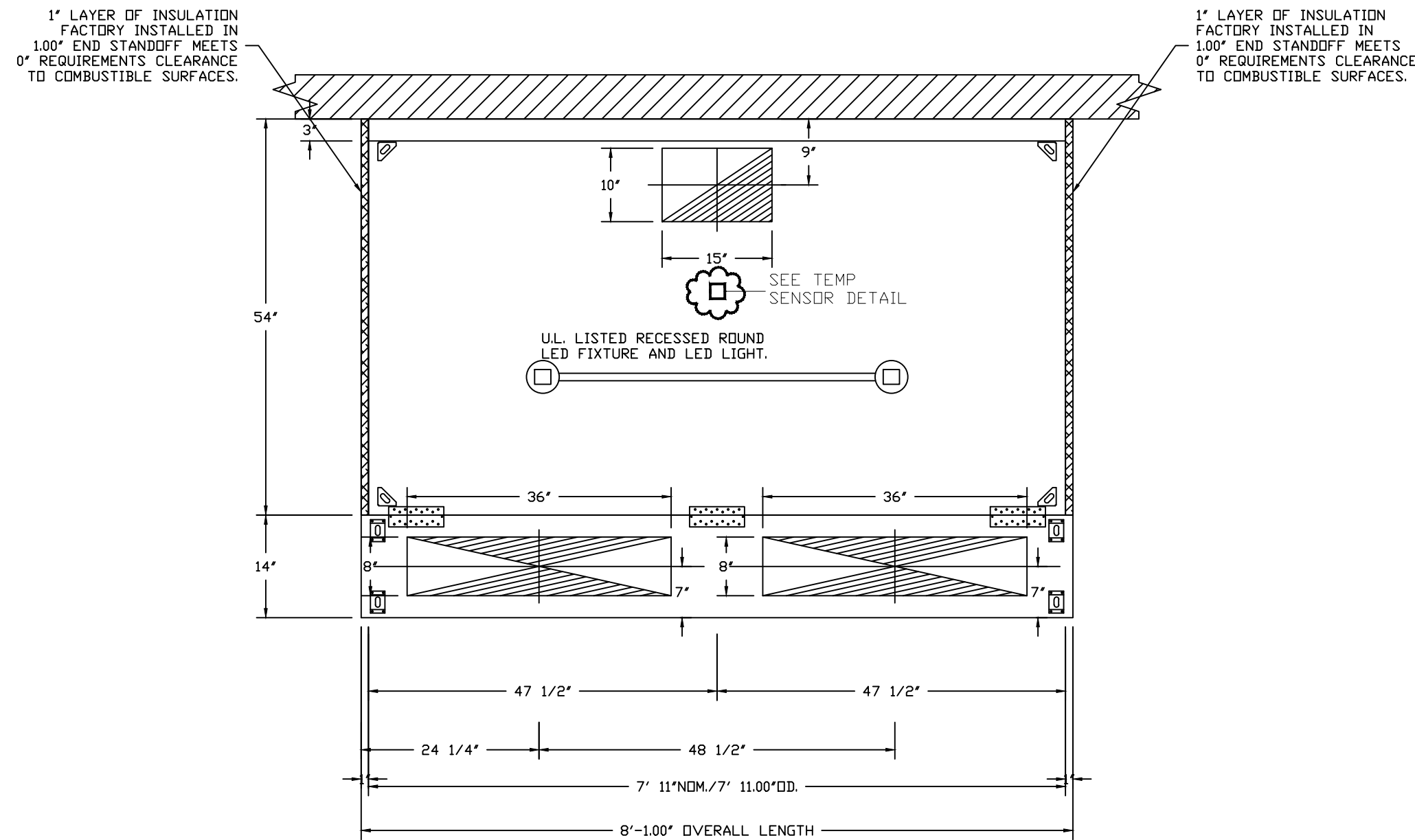
FEATURES:

- DIRECT DRIVE CONSTRUCTION (NO BELTS/PULLEYS).
- TWO ACCESS DOORS FOR EASY ACCESS.
- BACKWARD INCLINED NON-OVERLOADING WHEELS.
- UL762 LISTING.
- AMCA AIR & SOUND CERTIFIED.
- THERMAL OVERLOAD PROTECTION (SINGLE PHASE).
- NEMA 3R SAFETY DISCONNECT SWITCH.
- DRAIN MUST BE CONNECTED TO OPTIONAL GREASE BOX OR PIPED TO GREASE RESERVOIR (RECOMMENDED).

OPTIONS

SIF 13- SS LOW SP STRAIGHT DISCHARGE- SQUARE TO ROUND DISCHARGE ADAPTER.
SIF13 – INLET – STANDARD 14” DUCT CONNECTION.
SIF – HORIZONTAL OVERHEAD MOUNT – PRE-INSTALLED MOUNTS (11-36).
HANGING SPRING VIBRATION ISOLATORS (SET OF 4), FOR INDOOR OR OUTDOOR USE WITH SQUARE INLINE FANS (HSA125).
2 YEAR PARTS WARRANTY.

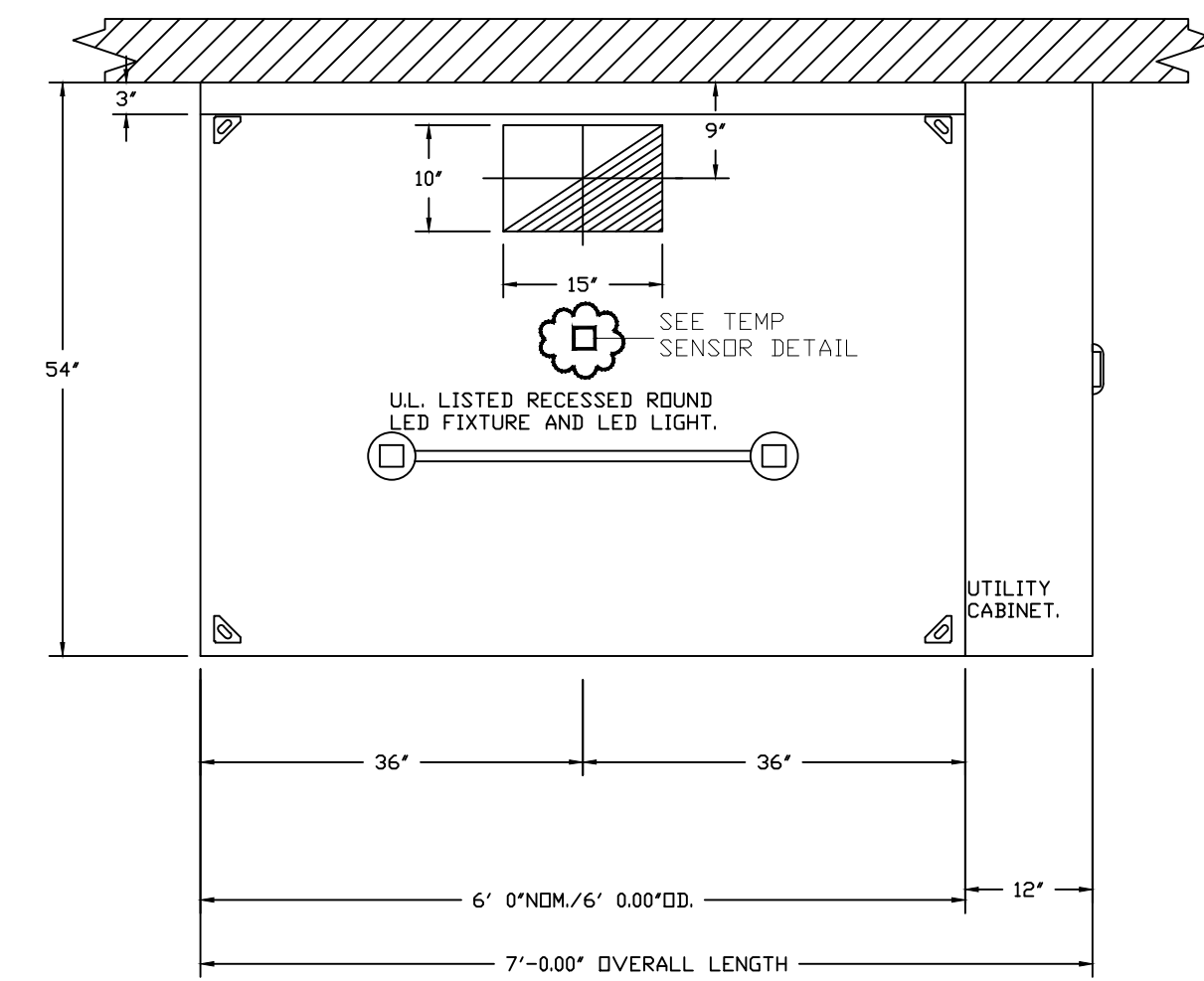
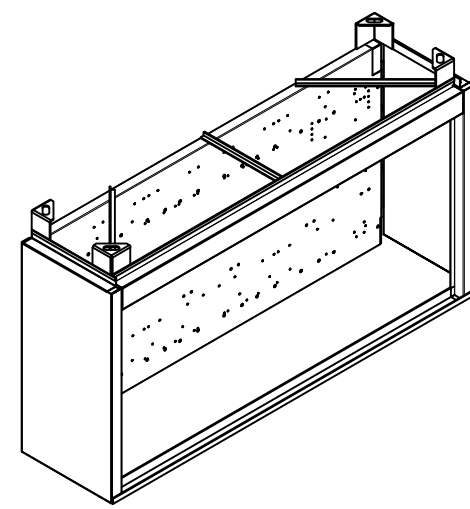
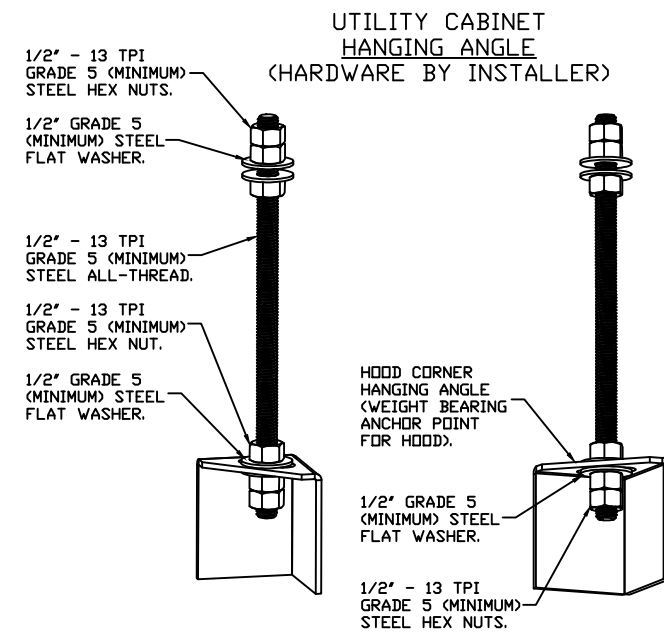




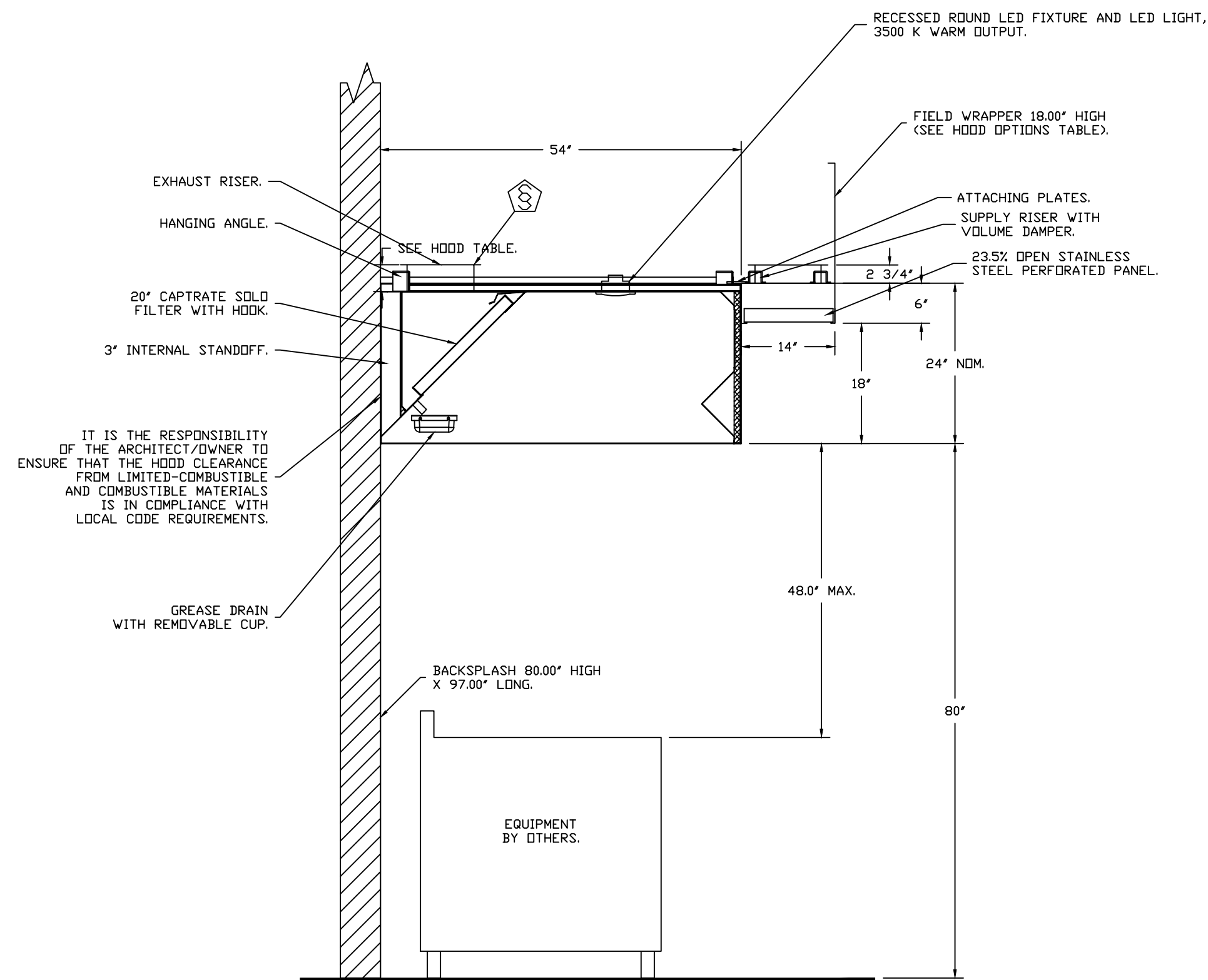
PLAN VIEW - HOOD #1 (Kitchen)
7' 11.00" LONG 5424ND-2-PSP-F

WALL-MOUNT UTILITY CABINET
ASSEMBLY INSTRUCTIONS

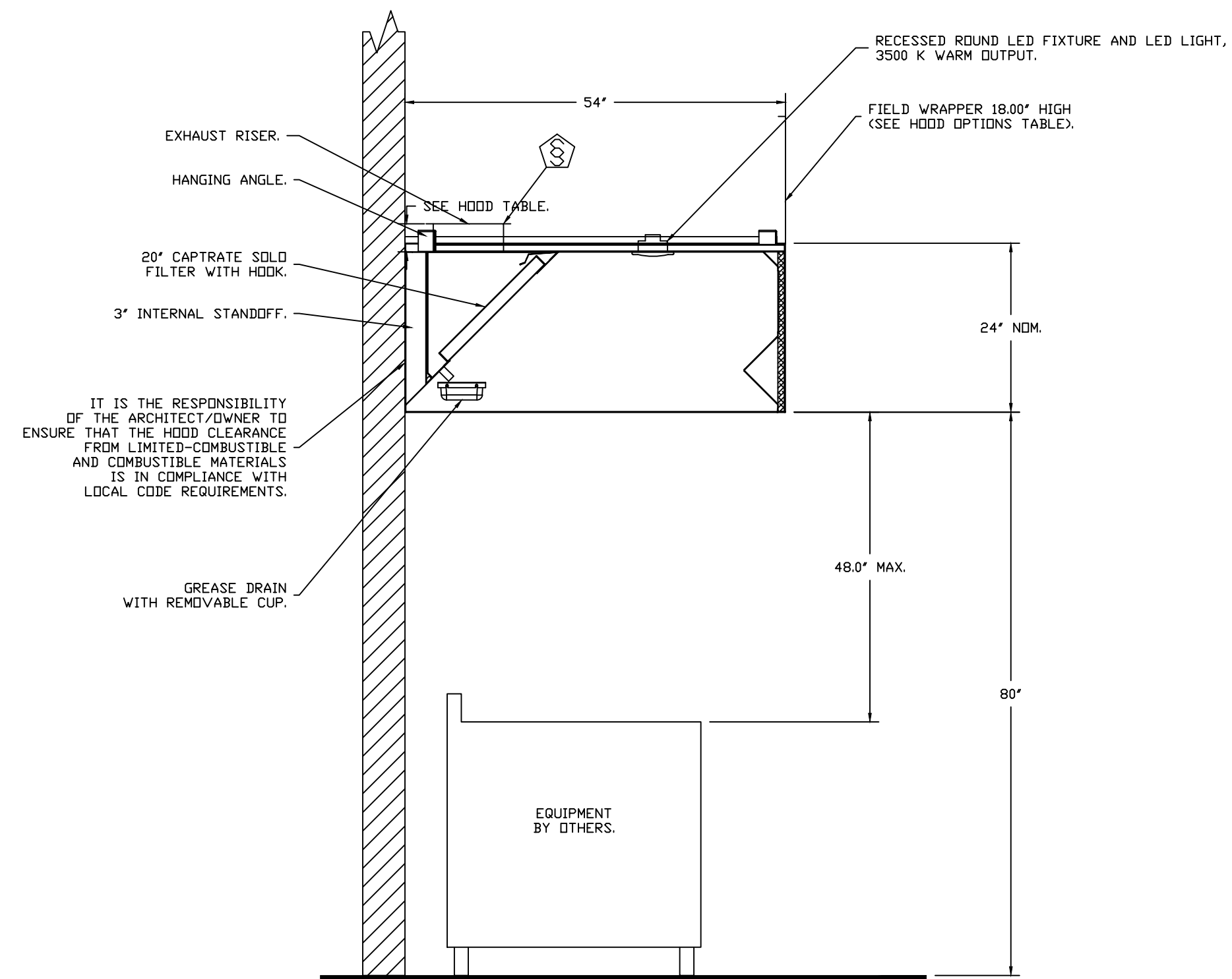
HANGING ANGLE MUST BE SUPPORTED WITH 1/2" - 13 TPI GRADE 5 (MINIMUM) ALL-THREAD. SANDWICH HANGING ANGLES AND CEILING ANCHOR POINTS WITH 1/2" GRADE 5 (MINIMUM) STEEL FLAT WASHERS AND 1/2" - 13 TPI GRADE 5 (MINIMUM) HEX NUTS AS SHOWN. MUST USE DOUBLED HEX NUT CONFIGURATION BENEATH UTILITY CABINET HANGING ANGLES AND ABOVE CEILING ANCHORS. MAINTAIN 1/4" OF EXPOSED THREADS BENEATH BOTTOM HEX NUT. TORQUE ALL HEX NUTS TO 57 FT-LBS.



PLAN VIEW - HOOD #2 (BBQ)
6' 0.00" LONG 5424ND-2



SECTION VIEW - MODEL 5424ND-2-PSP-F
HOOD - #1 (Kitchen)

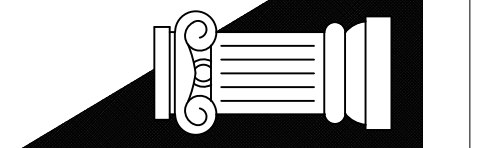


SECTION VIEW - MODEL 5424ND-2
HOOD - #2 (BBQ)

DATE: 7.18.22
ISSUE: FOR BID

SEAL:

SENDELSKI ARCHITECTS PC
ARCHITECTS - PLANNERS
215 ROANOKE AVENUE
RIVERHEAD, NY 11901
(631) 727-5352
9 SELENA COURT
WALDEN, NY 12586
(845) 275-8859



TAPPAN FIRE DISTRICT
300 WESTERN HWY S,
TAPPAN NY, 10983

MECHANICAL HOOD DETAILS

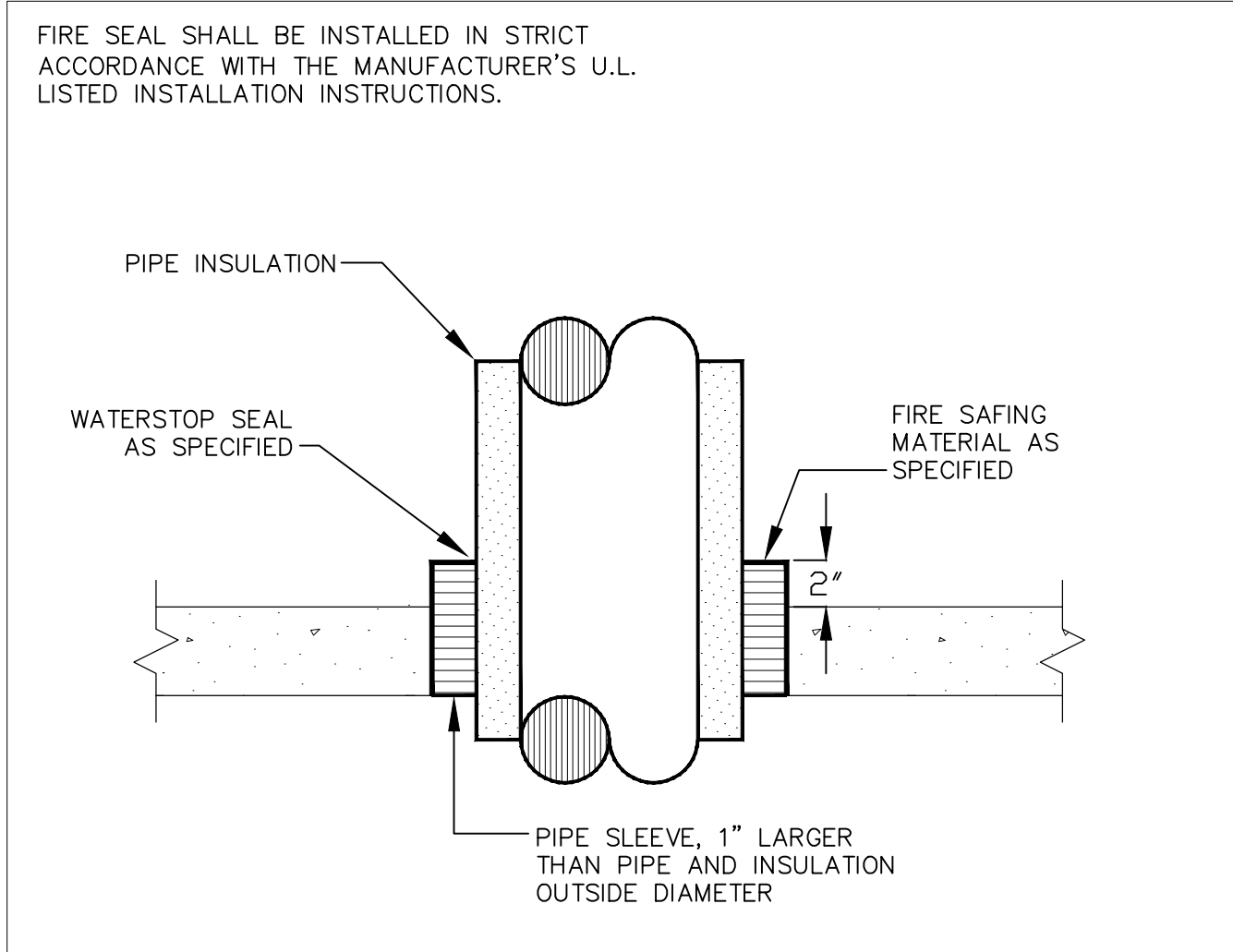
PROJECT #: 21-08

DRAWN BY:

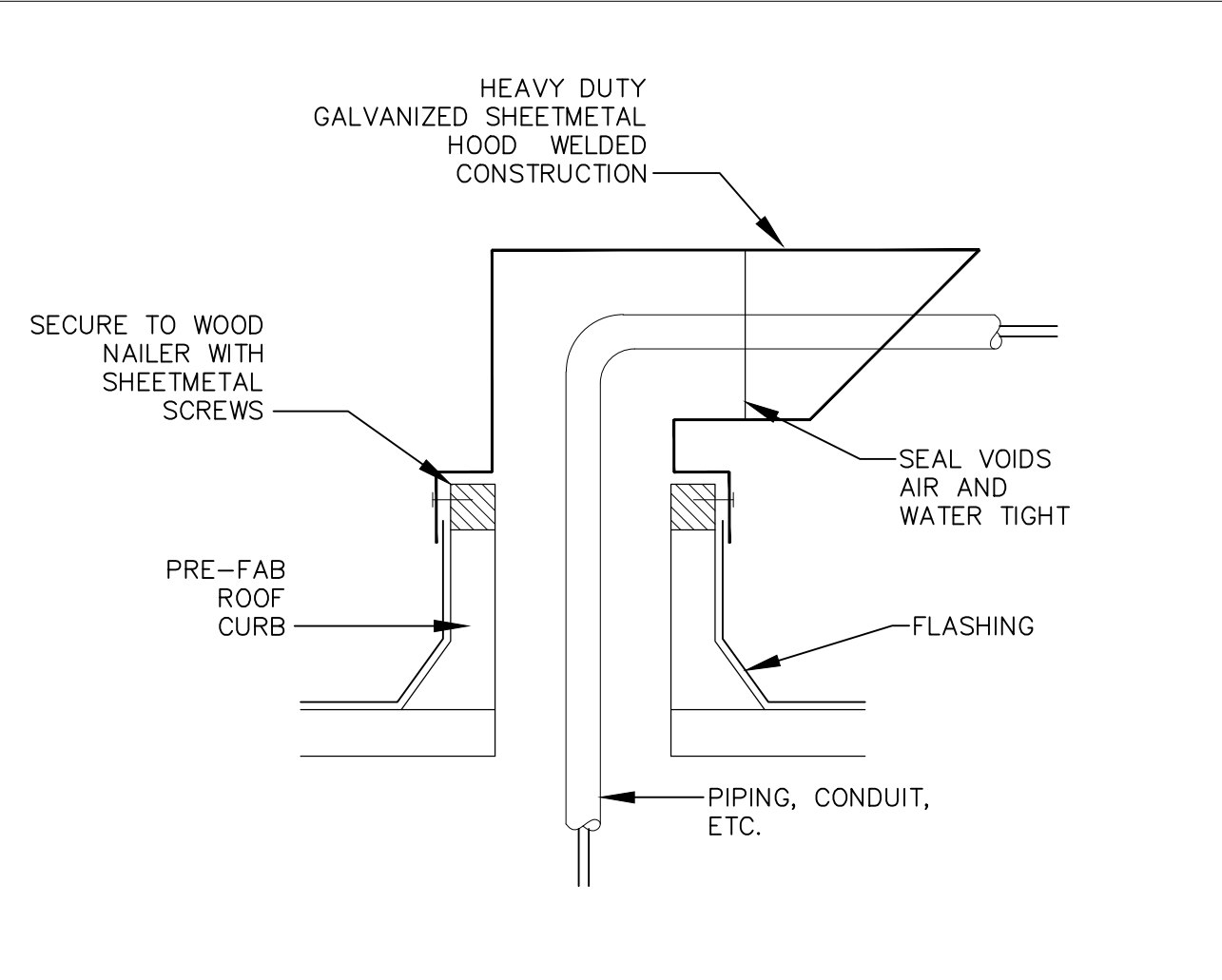
CAD FILE: 21-08/P:/BID

DRAWING#:

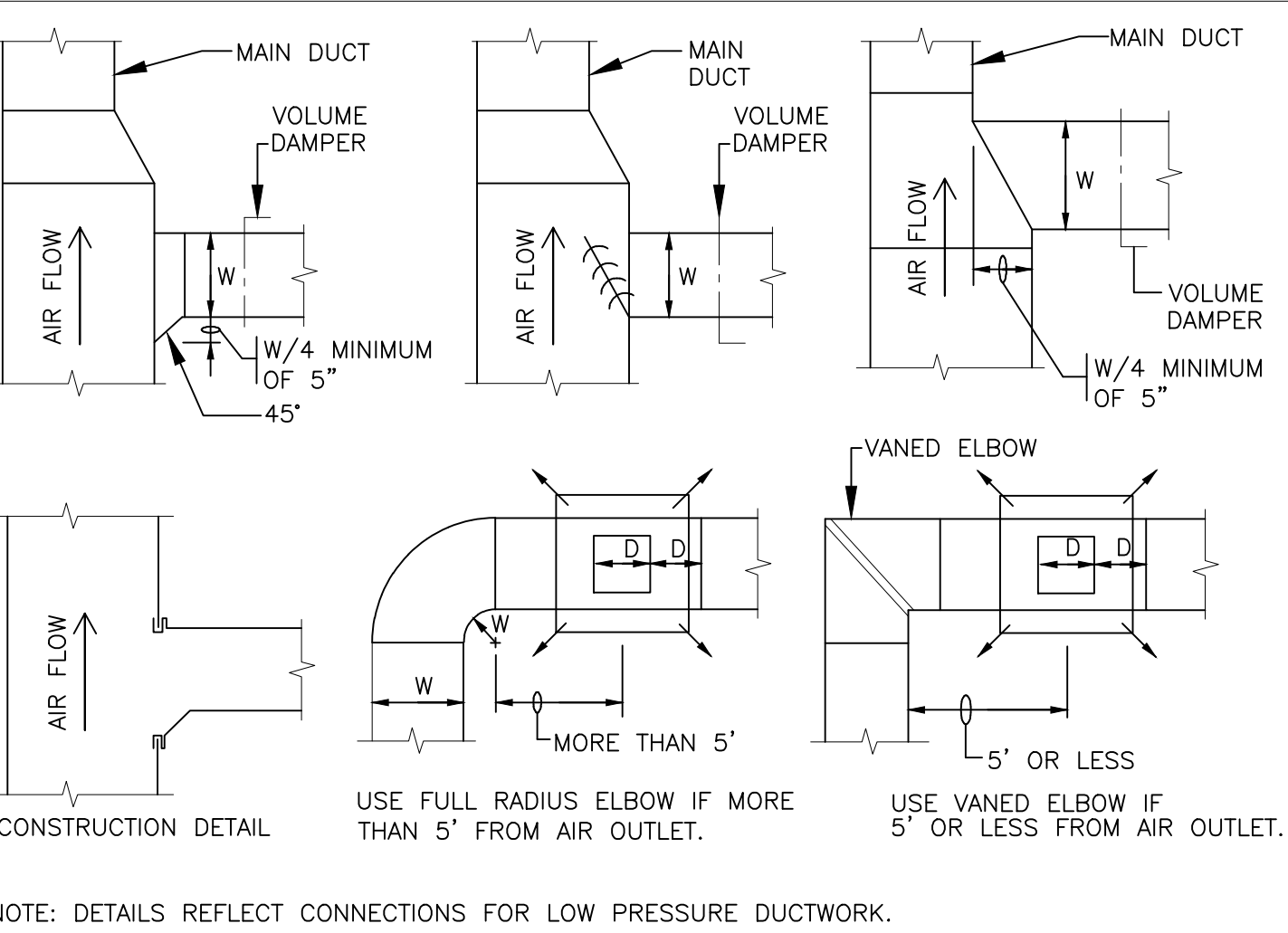
M-7



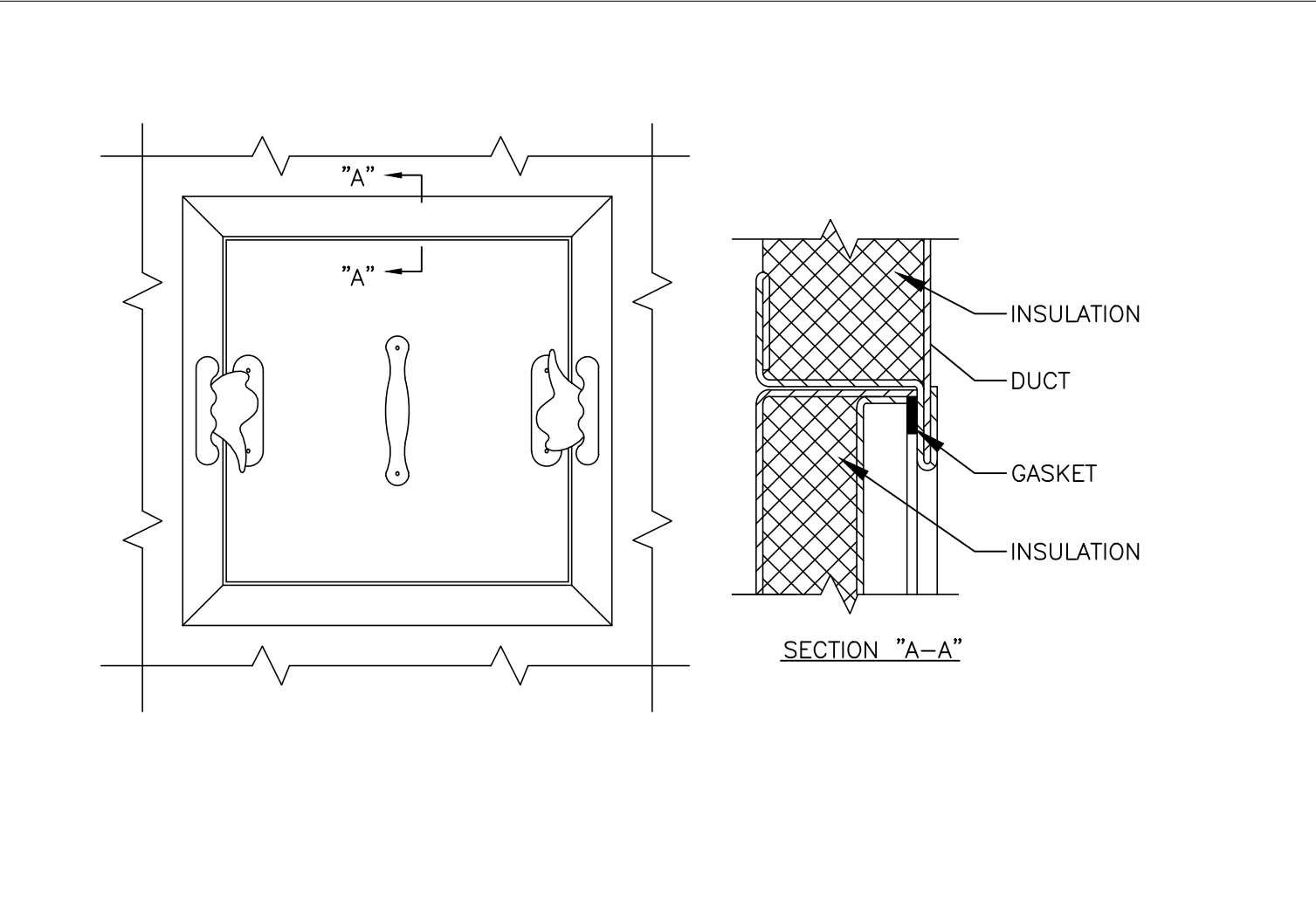
5 TYPICAL PIPE SLEEVE
NOT TO SCALE



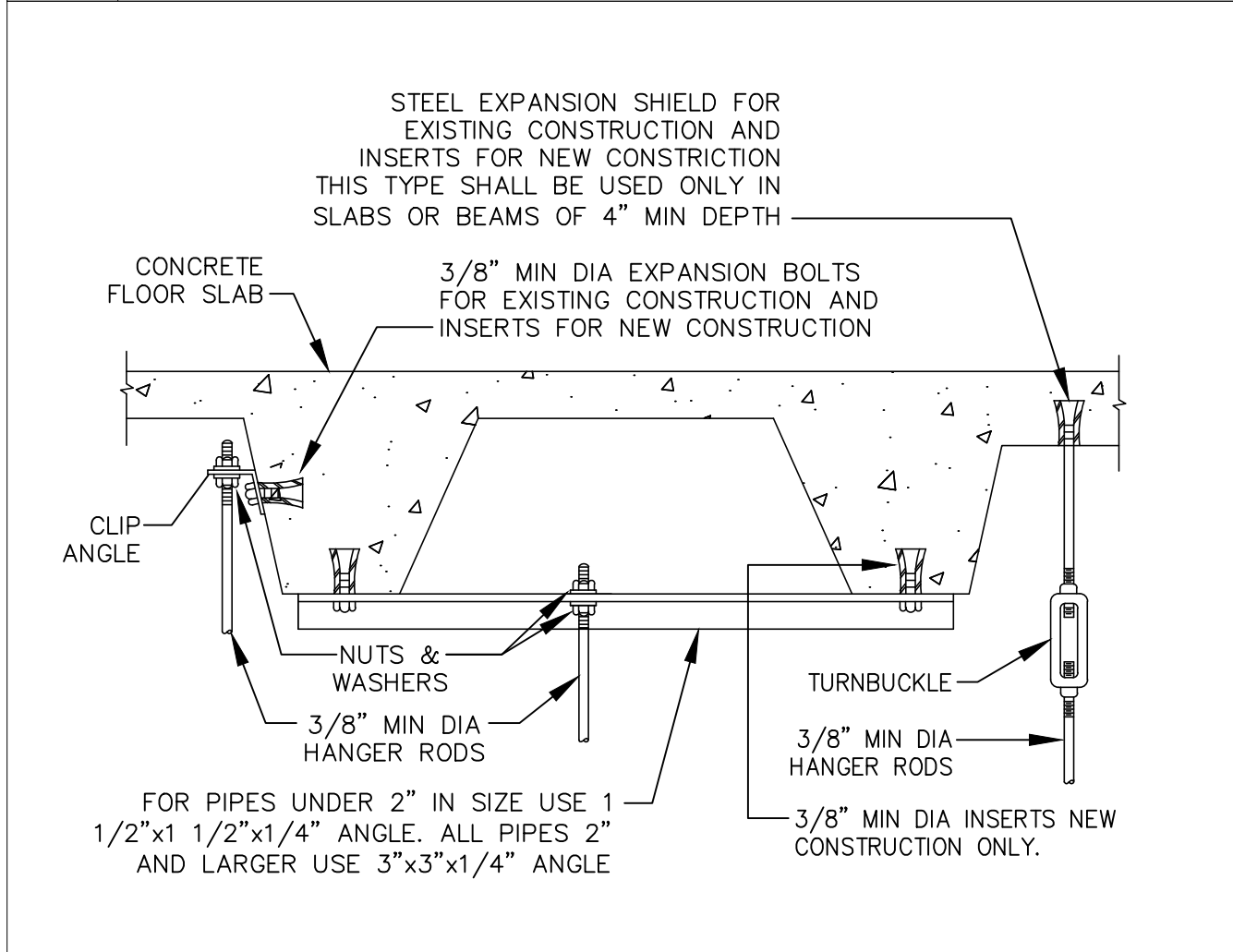
6 PIPE PENETRATION
NOT TO SCALE



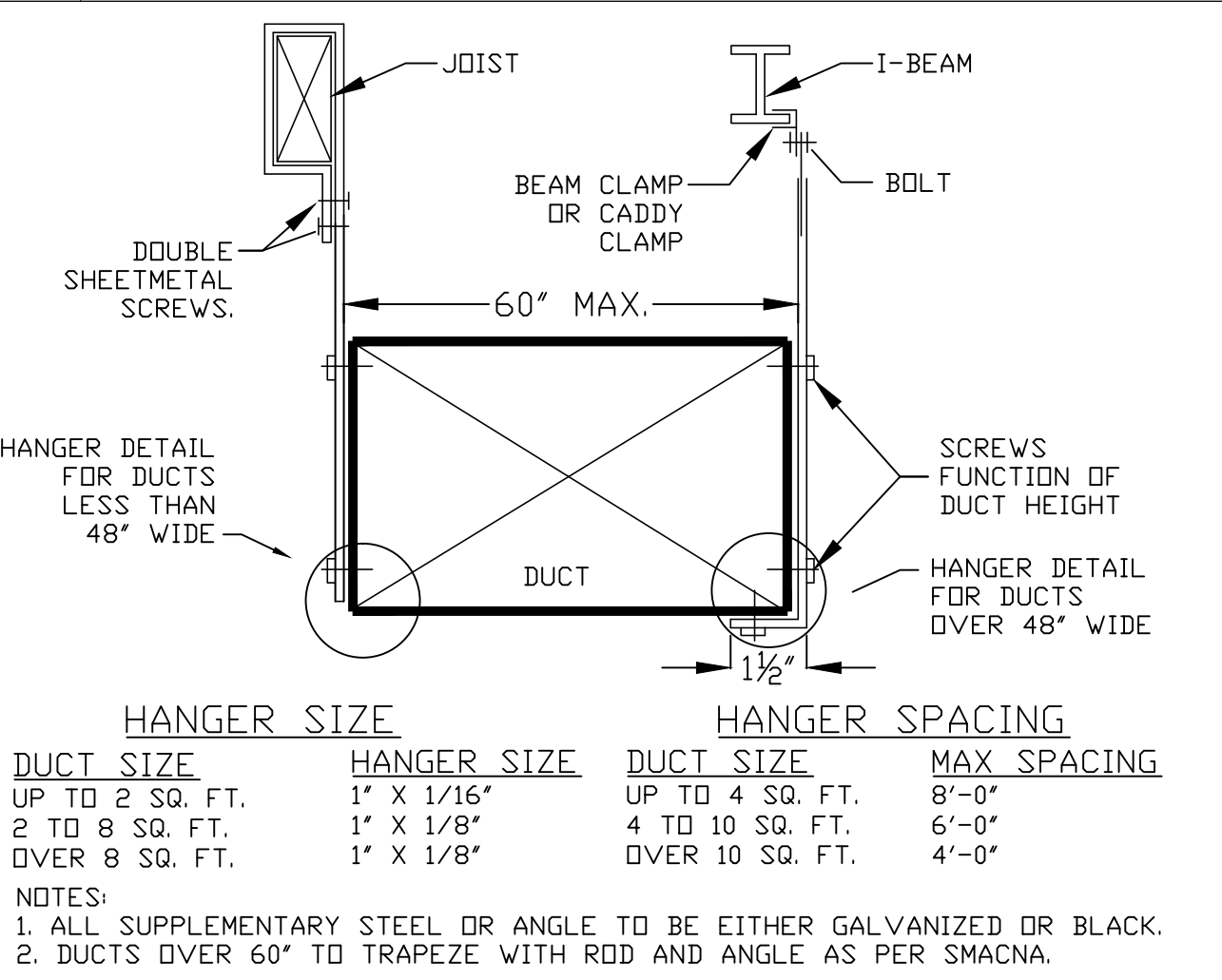
11 BRANCH DUCT CONNECTIONS
NOT TO SCALE



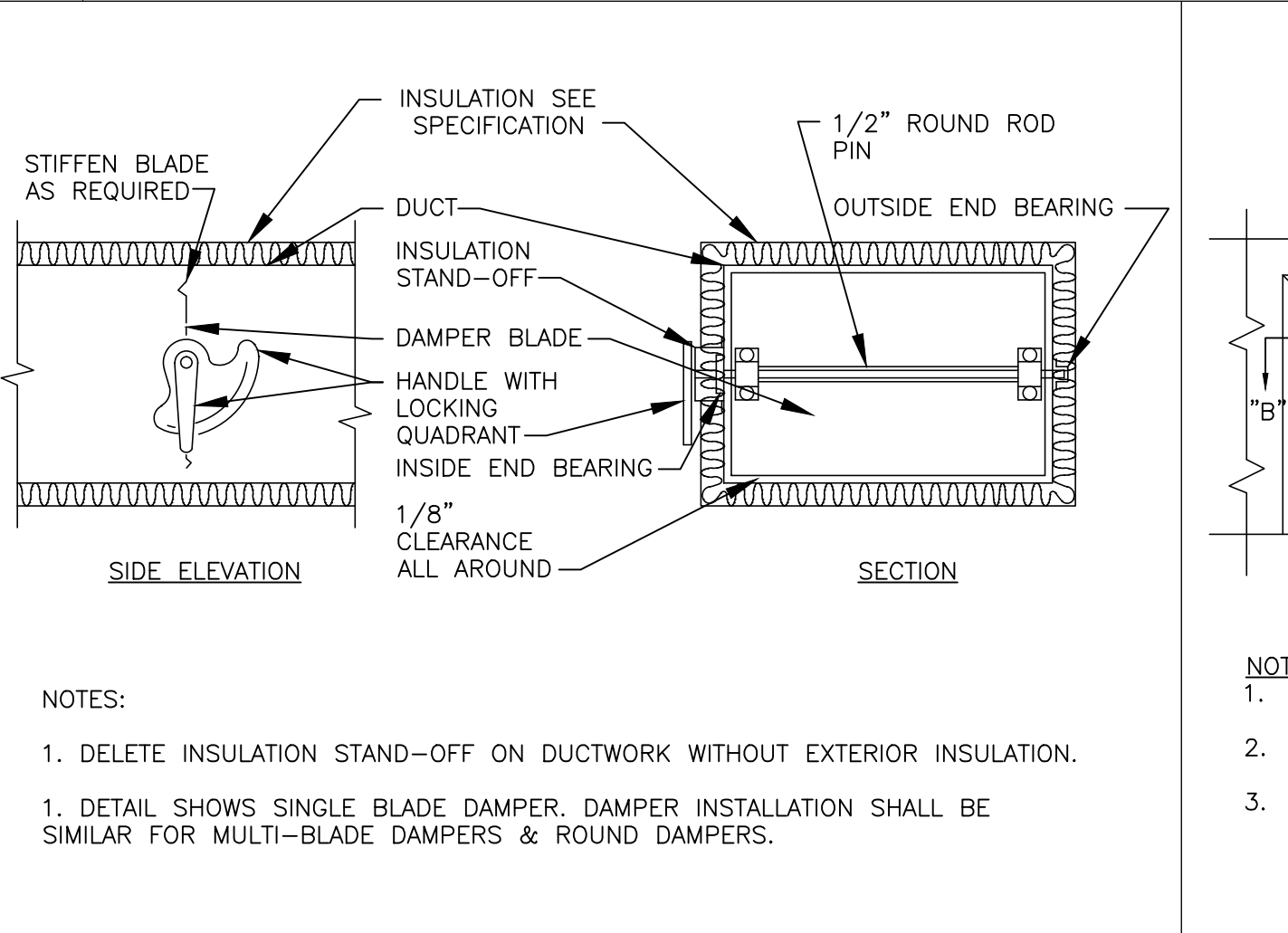
15 ACCESS PANEL
NOT TO SCALE



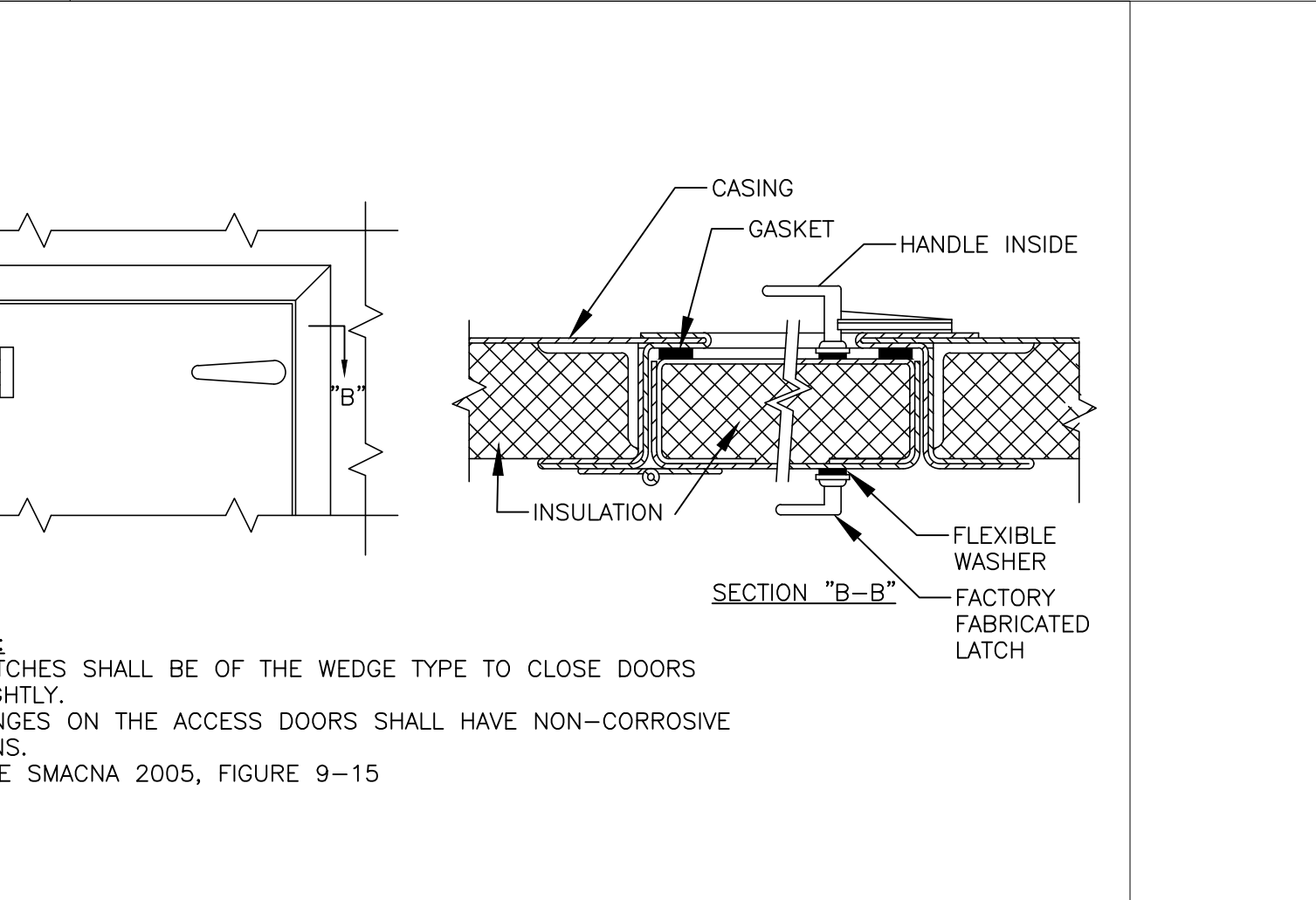
9 TYPICAL CONCRETE SLAB HANGING
NOT TO SCALE



10 TYPICAL DUCT HANGING
NOT TO SCALE



15 VOLUME DAMPER
NOT TO SCALE

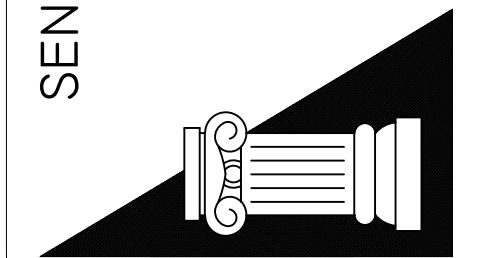


16 ACCESS DOOR
NOT TO SCALE

DATE: 7.18.22
ISSUE: FOR BID

SEAL:

SENDEWSKI ARCHITECTS PC
ARCHITECTS - PLANNERS
215 ROANOKE AVENUE
RIVERHEAD, NY 11901
(631) 727-5352
9 SELENA COURT
WALDEN, NY 12586
(845) 275-8859



TAPPAN FIRE DISTRICT
300 WESTERN HWY S,
TAPPAN NY, 10983
MECHANICAL DETAILS

PROJECT #: 21-08

DRAWN BY:

CAD FILE: 21-08/P:/BID

DRAWING#:

M-9