

**THIELLS  
ROSEVILLE FIRE  
DISTRICT**

CONTRACT

**CONTRACT P**

**PLUMBING CONTRACT**

SHEET TITLE

**PLUMBING SITE PLAN**

DRAWING No.

**PS 100.01**



1. INSTALLATION SHALL BE IN ACCORDANCE WITH ALL APPLICABLE COUNTY DEPARTMENT OF HEALTH SERVICES, NEW YORK STATE HEALTH DEPARTMENT REGULATIONS, AND VEOLIA WATER COMPANY REGULATIONS.
2. ALL CONNECTIONS ON THE WATER SERVICE SHALL BE DOWNSTREAM FROM THE BACKFLOW PREVENTION DEVICE. BYPASSING OF A BACKFLOW PREVENTION DEVICE IS A VIOLATION OF NEW YORK STATE HEALTH DEPARTMENT RULES AND REGULATIONS.
3. THE CONTRACTOR SHALL ENGAGE A CERTIFIED BACKFLOW PREVENTION DEVICE TESTER TO TEST THE BACKFLOW PREVENTION DEVICE AFTER INSTALLATION. IT IS THE OWNER'S RESPONSIBILITY TO HAVE EACH DEVICE CERTIFIED AT LEAST ANNUALLY WITH RESULTS REPORTED TO VEOLIA WATER COMPANY AND TO THE COUNTY DEPARTMENT OF HEALTH. CONTRACTOR SHALL BE RESPONSIBLE FOR ALL RELATED TESTING AND APPLICATION FEES.
4. SHUT-OFF VALVES ON DOMESTIC WATER SERVICE BFP DEVICE SHALL BE NRS TYPE GATE VALVES AND SHALL BE SAME MANUFACTURER AS BFP DEVICE.
5. SHUT-OFF VALVES ON FIRE SERVICE BFP DEVICE SHALL BE OS&Y TYPE GATE VALVES AND SHALL BE SAME MANUFACTURER AS BFP DEVICE.
6. TEST COCKS ON THE BFP DEVICE SHALL BE POSITIONED TO FACILITATE TESTING WITH 30" MINIMUM CLEARANCE.
7. BACKFLOW DEVICES MAY NOT BE MODIFIED IN ANY WAY DURING INSTALLATION.
8. 3" DOMESTIC WATER SERVICE SHALL BE TYPE K COPPER AND 4" FIRE SERVICE SHALL BE DUCTILE IRON.
9. ALL WATER SERVICES TO HAVE A MINIMUM OF 54" OF COVER.
10. PIPING SHALL BE UN-BRANCHED AND UNRESTRICTED FROM THE SUPPLY MAIN TO THE DEVICE, EXCEPT FOR THE METER.
11. CONTRACTOR SHALL PROVIDE APPROPRIATE FLOOR/WALL SUPPORTS FOR ALL DEVICES AND PIPING. ALL SUPPORTS/HANGERS/CLAMPS SHALL BE GALVANIZED STEEL.
12. BACKFLOW DEVICES SHALL BE APPROVED BY THE UNIVERSITY OF SOUTHERN CALIFORNIA FOUNDATION FOR CROSS CONNECTION CONTROL AND HYDRAULIC RESEARCH.
13. DEVICE MAY NOT BE INSTALLED HIGHER THAN 5'-0" ABOVE THE FLOOR OR A FIXED PLATFORM IS REQUIRED.
14. WATER SERVICE LINES TO MAINTAIN A MINIMUM CLEARANCE OF 10'-0" FROM GAS SERVICE, SEWER LINES, ELECTRICAL SERVICE, DRAINAGE LINES, UTILITY POLES, TREES, ETC.



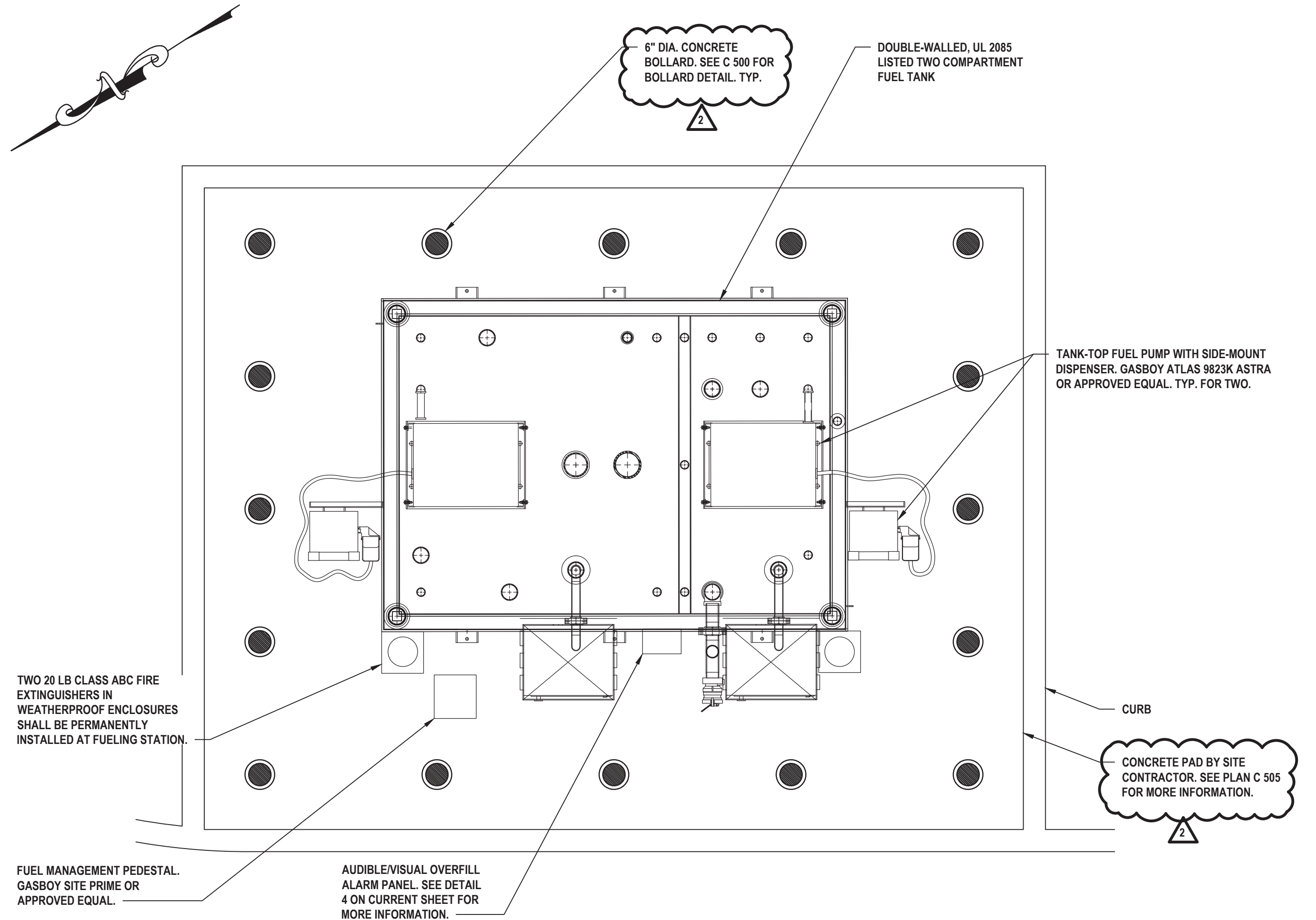
- NOTES:**
1. ALL EXCAVATION AND BACKFILL WORK REQUIRED TO INSTALL BELOW GRADE PLUMBING PIPING SHALL BE PERFORMED BY THE SITE CONTRACTOR.
  2. THE SITE CONTRACTOR SHALL BE RESPONSIBLE TO PROVIDE ALL CONCRETE PADS FOR PLUMBING EQUIPMENT.



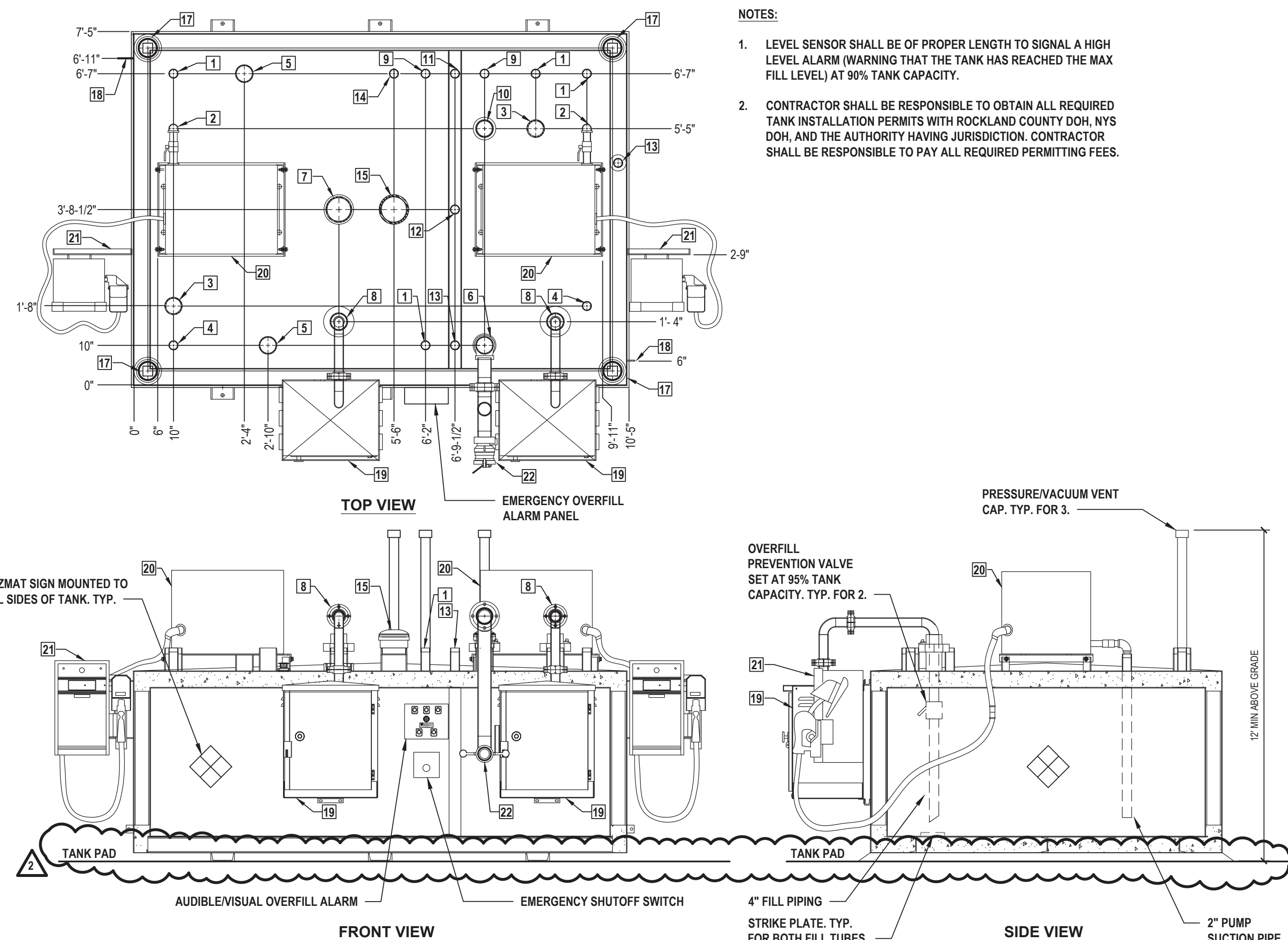
- NOTES:
1. ALL DIMENSIONS ARE IN INCHES.
  2. CONCRETE SLAB SHALL BE INSTALLED BY SITE CONTRACTOR. SEE PLAN C 505 FOR MORE INFORMATION.
  3. ~~EXPRESSDASH SHALL BE MOUNTED A MINIMUM OF 18" ABOVE THE SLAB CONTRACTOR SHALL PROVIDE ALL~~ POWER WIRING TO RECEPTACLE AND HEATER.
  4. THE ENCLOSURE SHALL USE A SINGLE, 2000W, 240V, SINGLE PHASE SLAB MOUNT HEATER. THE HEATER SHALL BE PROVIDED WITH A 208V, SINGLE PHASE POWER FEED AND SHALL PROVIDE A DERATED POWER OUTPUT OF 1,500W.
  5. A POWER INDICATING LIGHT SHALL BE INSTALLED ON THE OUTSIDE OF THE HEATED ENCLOSURE.







1 Enlarged Fueling Station Plan  
SCALE: 1/2"=1'-0"



6 Fuel Storage Tank Details  
SCALE: N.T.S.

**WARNING**

1. NO SMOKING.
2. SHUT OFF MOTOR.
3. DISCHARGE YOUR STATIC ELECTRICITY BEFORE FUELING BY TOUCHING A METAL SURFACE AWAY FROM THE NOZZLE.
4. TO PREVENT STATIC CHARGE, DO NOT REENTER YOUR VEHICLE WHILE GASOLINE IS PUMPING.
5. IF A FIRE STARTS, DO NOT REMOVE NOZZLE - BACK AWAY IMMEDIATELY.
6. IT IS UNLAWFUL AND DANGEROUS TO DISPENSE GASOLINE INTO UNAPPROVED CONTAINERS.
7. NO FILLING OF PORTABLE CONTAINERS IN OR ON A MOTOR VEHICLE.

PLACE CONTAINER ON GROUND BEFORE FILLING.

- NOTES:
1. SIGNS SHALL BE OF DURABLE MATERIAL.
  2. POST SIGNS AT DISPENSER.

**IN CASE OF FIRE, SPILL OR RELEASE:**

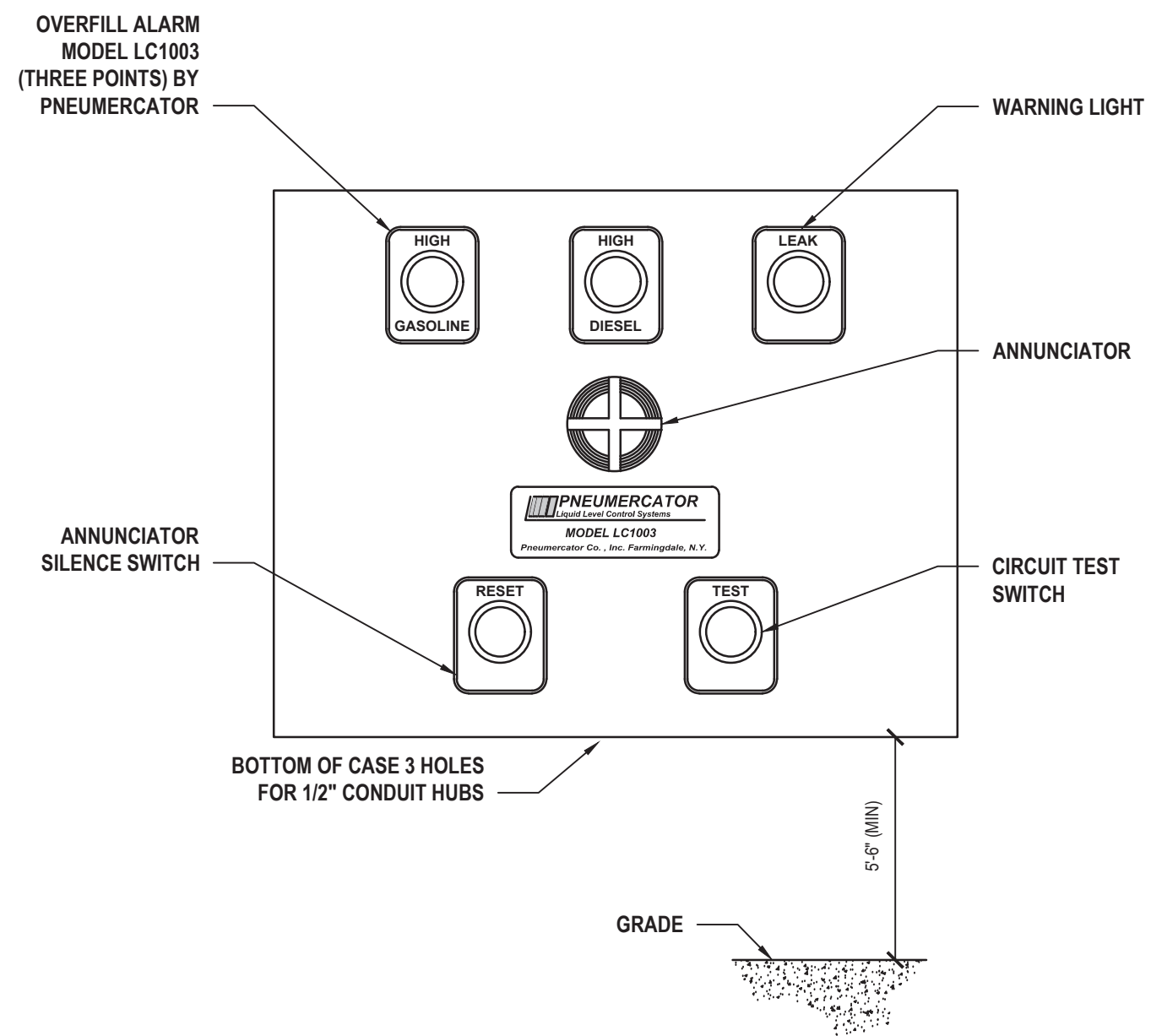
1. USE EMERGENCY PUMP SHUT-OFF.
2. REPORT THE ACCIDENT!

FIRE DEPARTMENT TELEPHONE NO. (XXX) XXX-XXXX

NEW YORK STATE  
DEPARTMENT OF ENVIRONMENTAL CONSERVATION  
SPILL HOTLINE NO. (800) 457-7362

FACILITY ADDRESS: 65 W RAMAPO ROAD  
GARNERVILLE, NY 10923

2 NYS Fire Code Signage  
SCALE: NTS



4 Audible / Visual Overfill Alarm  
SCALE: NTS

BILL OF MATERIALS		
ITEM NO.	SIZE	DESCRIPTION
1	2"	SPARE
2	2"	SUCTION PUMP
3	4"	ELECTRONIC LEVEL SENSOR - PNEUMECATOR MP450S WITH PK4-RM PROBE RISER KIT OR APPROVED EQUAL
4	2"	MECHANICAL GAUGE
5	4"	SPARE
6	4"	PHASE 1 VAPOR RECOVERY INLET CONNECTION
7	6"	PRIMARY DIESEL TANK EMERGENCY VENT
8	4"	4" FILL PIPE WITH OVERFILL PREVENTION VALVE SET AT 95% TANK CAPACITY
9	2"	PRIMARY TANK WORKING VENT
10	4"	PRIMARY GASOLINE TANK EMERGENCY VENT
11	2"	INTERSTITIAL SPARE
12	2"	INTERSTITIAL MUSHROOM VENT
13	2"	PRODUCT DISTINGUISHING LEAK SENSOR WITH FAULT DETECTION - PNEUMECATOR MODEL ES825-200 WITH MODEL SK2-RM5 SENSOR CAP KIT OR APPROVED EQUAL
14	2"	SECONDARY WORKING VENT
15	6"	SECONDARY CONTAINMENT EMERGENCY VENT
16	-	-
17	4"	FIRE RATED MATERIAL FILL
18	2" X 2" X 1/4"	GROUND CLIP
19	25" X 21" X 28"	MORRISON 2QBB REMOTE FILL BOX
20	24" X 33" X 5"	TOP MOUNT TANK PUMP, WITH HOUSING AND SUPPORT BRACKET. GASBOY MODEL 9820K OR APPROVED EQUAL
21	20"1/8" X 1" X 15"	FUEL DISPENSER WITH BRACKET. GASBOY MODEL 9820K OR APPROVED EQUAL
22	3"	PHASE 1 VAPOR RECOVERY PIPING

**DANGER**  
FLAMMABLE LIQUIDS  
NO SMOKING  
SIGN 'A'

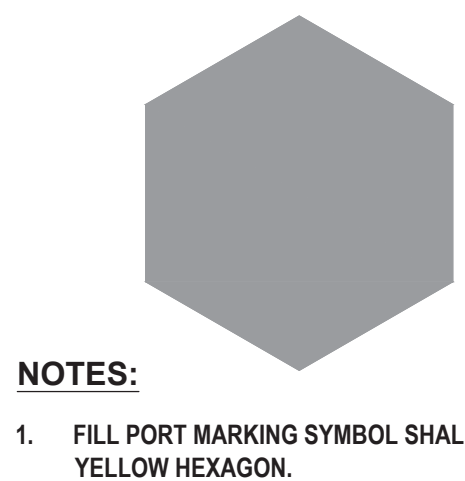
**CAUTION**  
WHEN ALARM BELL SOUNDS  
TANK FILLED TO CAPACITY  
DO NOT OVERFILL  
SIGN 'C'

**EMERGENCY SHUT-OFF**  
SIGN 'D'

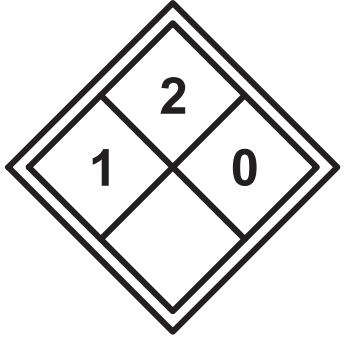
**HAZCOM**  
SIGN 'B'

- NOTES:
1. SIGNS SHALL BE OF DURABLE MATERIAL.
  2. SIGN 'A' - "DANGER" SHALL BE WHITE LETTERING ON A RED BACKGROUND. ALL LETTERS SHALL NOT BE LESS THAN 3" IN HEIGHT AND 1/2" IN STROKE.
  3. SIGN 'B' - "DANGER" AND HAZCOM "FLAMMABLE" SIGNS SHALL BE PERMANENTLY AFFIXED TO OR NEAR DISPENSER AT CLEARLY VISIBLE LOCATIONS.
  4. SIGN 'C' - "CAUTION" SIGN SHALL BE PERMANENTLY AFFIXED IN A CLEARLY VISIBLE LOCATION ABOVE OR BELOW THE OVERFILL ALARM PANEL.
  5. SIGN 'D' - "EMERGENCY SHUT-OFF" SIGN SHALL BE PERMANENTLY AFFIXED IN A CLEARLY VISIBLE LOCATION AT OR NEAR EMERGENCY KILL SWITCHES).

3 HazCom Signage  
SCALE: NTS



- NOTES:
1. FILL PORT MARKING SYMBOL SHALL BE A SOLID YELLOW HEXAGON.

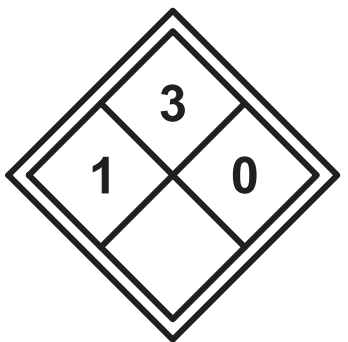


- NOTES:
1. NFPA DIAMOND SIGN SHALL BE OF DURABLE MATERIAL.
  2. SIGN SHALL BE PERMANENTLY AFFIXED TO GASOLINE DISPENSER AT A CLEARLY VISIBLE LOCATION.

5 Diesel Fuel Signage  
SCALE: NTS



- NOTES:
1. FILL PORT MARKING SYMBOL SHALL BE A SOLID WHITE CROSS WITH BLACK CROSS.
  2. VAPOR RECOVERY PORT MARKING SYMBOL SHALL BE A SOLID ORANGE CIRCLE.



- NOTES:
1. NFPA DIAMOND SIGN SHALL BE OF DURABLE MATERIAL.
  2. SIGN SHALL BE PERMANENTLY AFFIXED TO GASOLINE DISPENSER AT A CLEARLY VISIBLE LOCATION.

7 Gasoline Signage  
SCALE: NTS

**DIESEL**

Tank ID #: ---

This tank conforms with 6 NYCRR Part 613

This tank is manufactured to UL-2085 Standard

Manf. Date: MM-YYYY

Tank Width: 6 ft. - 9 in.

Tank Length: 6 ft. - 4 in.

Nominal Capacity: 1,500 gallons

Design Capacity: 1,350 gallons

Working Capacity: --- gallons

Model No.: ---

Manufacturer: ---

Installed Date/By: ---

Serial No.: ---

- NOTES:
1. LABEL SHALL BE OF DURABLE MATERIAL.
  2. LABEL SHALL BE PERMANENTLY AFFIXED INSIDE FILL PORT (WITH 18-INCH STAINLESS STEEL CHAIN) AND AT TANK MONITORING PANEL.

**GASOLINE**

Tank ID #: ---

This tank conforms with 6 NYCRR Part 613

This tank is manufactured to UL-2085 Standard

Manf. Date: MM-YYYY

Tank Width: 6 ft. - 9 in.

Tank Length: 3 ft. - 2 in.

Nominal Capacity: 500 gallons

Design Capacity: 450 gallons

Working Capacity: --- gallons

Model No.: ---

Manufacturer: ---

Installed Date/By: ---

Serial No.: ---

- NOTES:
1. LABEL SHALL BE OF DURABLE MATERIAL.
  2. LABEL SHALL BE PERMANENTLY AFFIXED INSIDE FILL PORT (WITH 18-INCH STAINLESS STEEL CHAIN) AND AT TANK MONITORING PANEL.

**H 2 M** architects + engineers

538 Broad Hollow Road, 4th Floor East  
Melville, NY 11747  
631.756.8000 • www.h2m.com  
NY Architecture & Landscape Architecture: No Certificate Required  
NY Engineering Certificate of Authorization No. 0018178

CONSULTANTS:		

MARK	DATE	DESCRIPTION
2	03/24/2025	ADDENDUM NO.2

STATE OF NEW YORK  
JONATHAN R. MURATORE, P.E.  
LICENSED PROFESSIONAL ENGINEER  
096440-1

10/31/2027  
EXP. DATE

DESIGNED BY: CRG  
PROJECT NO: TRFD 2302

DRAWN BY: CRG  
DATE: FEBRUARY 2025

CHECKED BY: JRM  
SCALE: AS SHOWN

REVIEWED BY: JRM

**THIELS  
ROSEVILLE FIRE  
DISTRICT**

NEW 26-100 FIRE  
HEADQUARTERS

**THIELS  
26  
FD**

65 W RAMAPO RD  
GARNERVILLE, NY 10923

CONTRACT

**CONTRACT P  
PLUMBING CONTRACT**

STATUS

**FINAL BID DOCUMENT**

SHEET TITLE

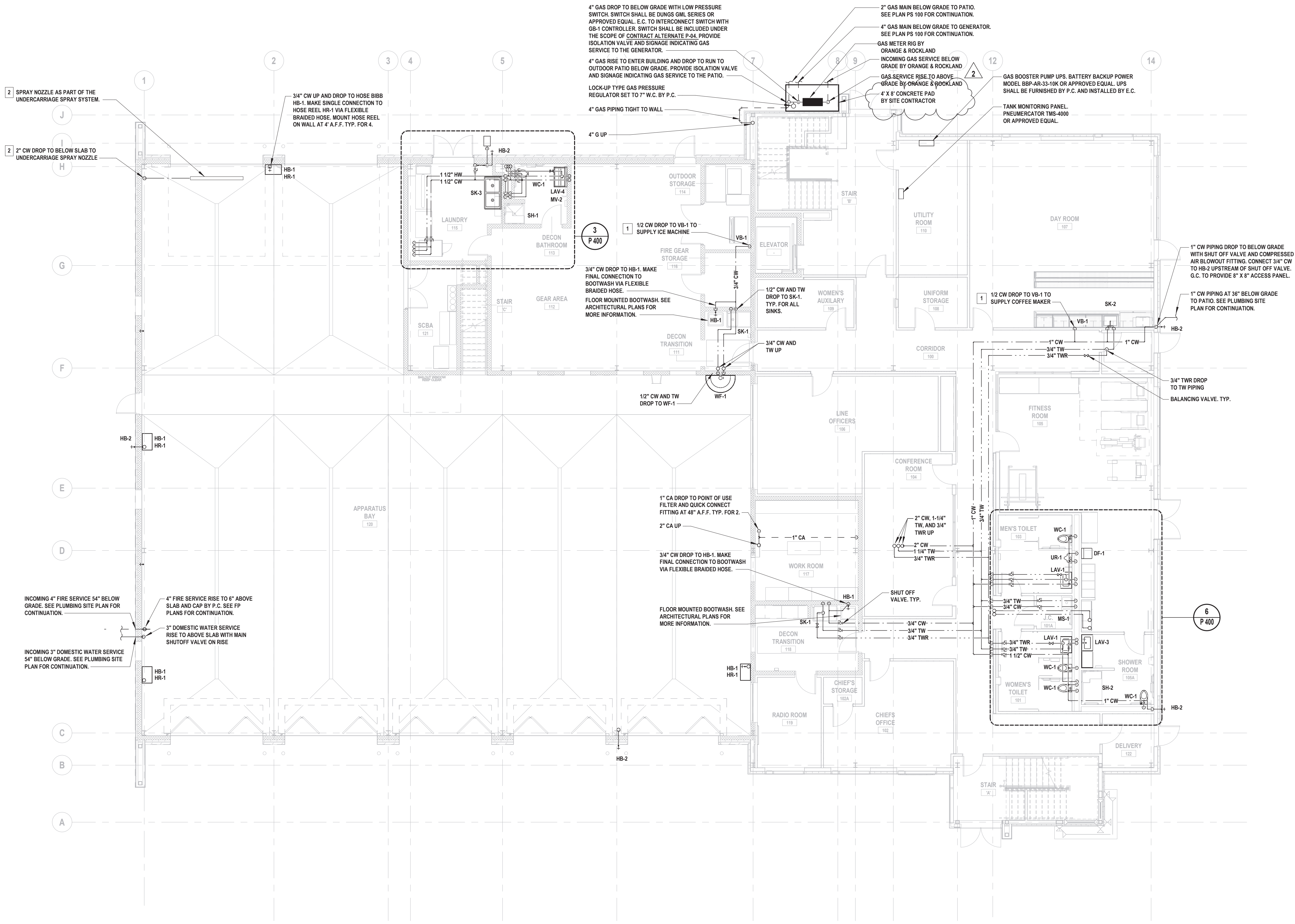
**ENLARGED FUELING STATION  
PLAN AND DETAILS**

DRAWING No.

**PS 101.01**

X:\TRFD\Thiels\Roseville Fire District\TRFD2302 - New Fire Station\02-BIM\CAD\DWG\PlantingPS 101.01 - Enlarged Fueling Station.dwg Last Modified: Mar 24, 2025 - 4:20pm Plotted on: Mar 24, 2025 - 4:20pm By: agale





1 Domestic Water, Gas, and Compressed Air First Floor Plan  
SCALE: 1/8" = 1'-0"

KEYED PLUMBING NOTES

- 1 PROVIDE MANUFACTURER-RECOMMENDED POINT OF USE WATER FILTER, ASSE 1024 LISTED LEAD FREE DUAL CHECK VALVE, AND WATER HAMMER ARRESTOR ON CW DROP TO BEVERAGE DISPENSING EQUIPMENT.
- 2 UNDERCARRIAGE SPRAY SYSTEM SHALL INCLUDE SPRAY NOZZLE, 3 HP PUMP, AND 250 GALLON HOLDING TANK. SYSTEM SHALL BE MCHENRY MODEL WCU-35-0ME3 OR APPROVED EQUAL. SYSTEM AND ALL ASSOCIATED PIPING, VALVES, HOSE BIBBS, BACKFLOW PREVENTERS, MATERIALS, AND INSTALLATION COSTS SHALL BE INCLUDED UNDER THE SCOPE OF CONTRACT ALTERNATE P-01. SEE ARCHITECTURAL PLANS FOR MORE INFORMATION.

CONSULTANTS:

MARK	DATE	DESCRIPTION
2	03/24/2025	BID ADDENDUM NO. 2



10/31/2027 Exp. Date <b>JONATHAN R. MURATORE, P.E.</b> NY PROFESSIONAL ENGINEER Lic. No. 096440			
DESIGNED BY: CRG	DRAWN BY: MPF/CRG	CHECKED BY: JRM	REVIEWED BY: JRM
PROJECT No: TRFD 2302	DATE: FEBRUARY 2025	SCALE: AS SHOWN	

CLIENT

**THIELLS  
ROSEVILLE FIRE  
DISTRICT**

**NEW 26-100 FIRE  
HEADQUARTERS**

**65 W RAMAPO ROAD  
GARNERVILLE, NY 10923**

CONTRACT

**CONTRACT P  
PLUMBING CONSTRUCTION**

STATUS

**FINAL BID DOCUMENT**

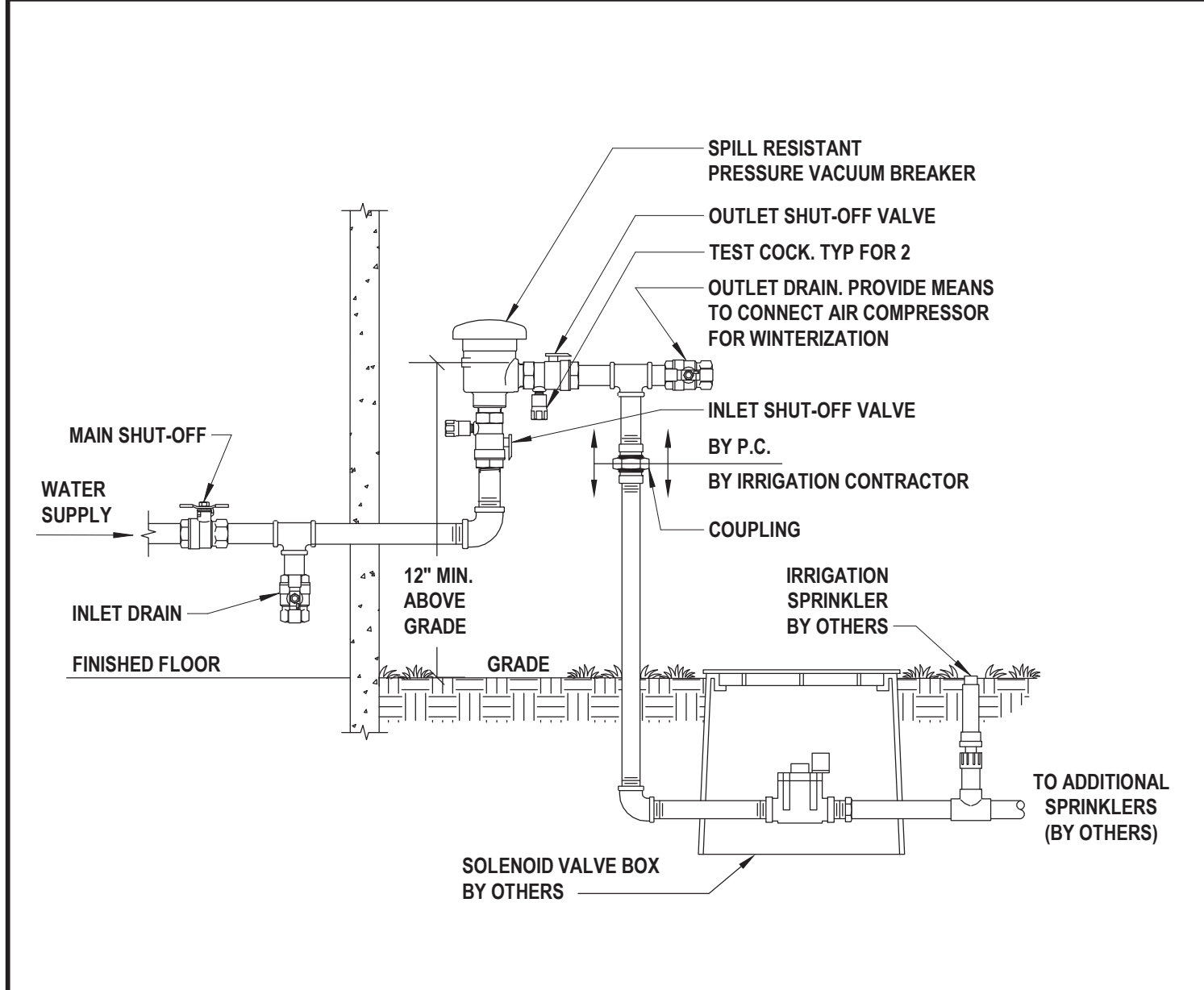
SHEET TITLE

**DOMESTIC WATER, GAS, AND  
COMPRESSED AIR FIRST FLOOR  
PLAN**

DRAWING No.

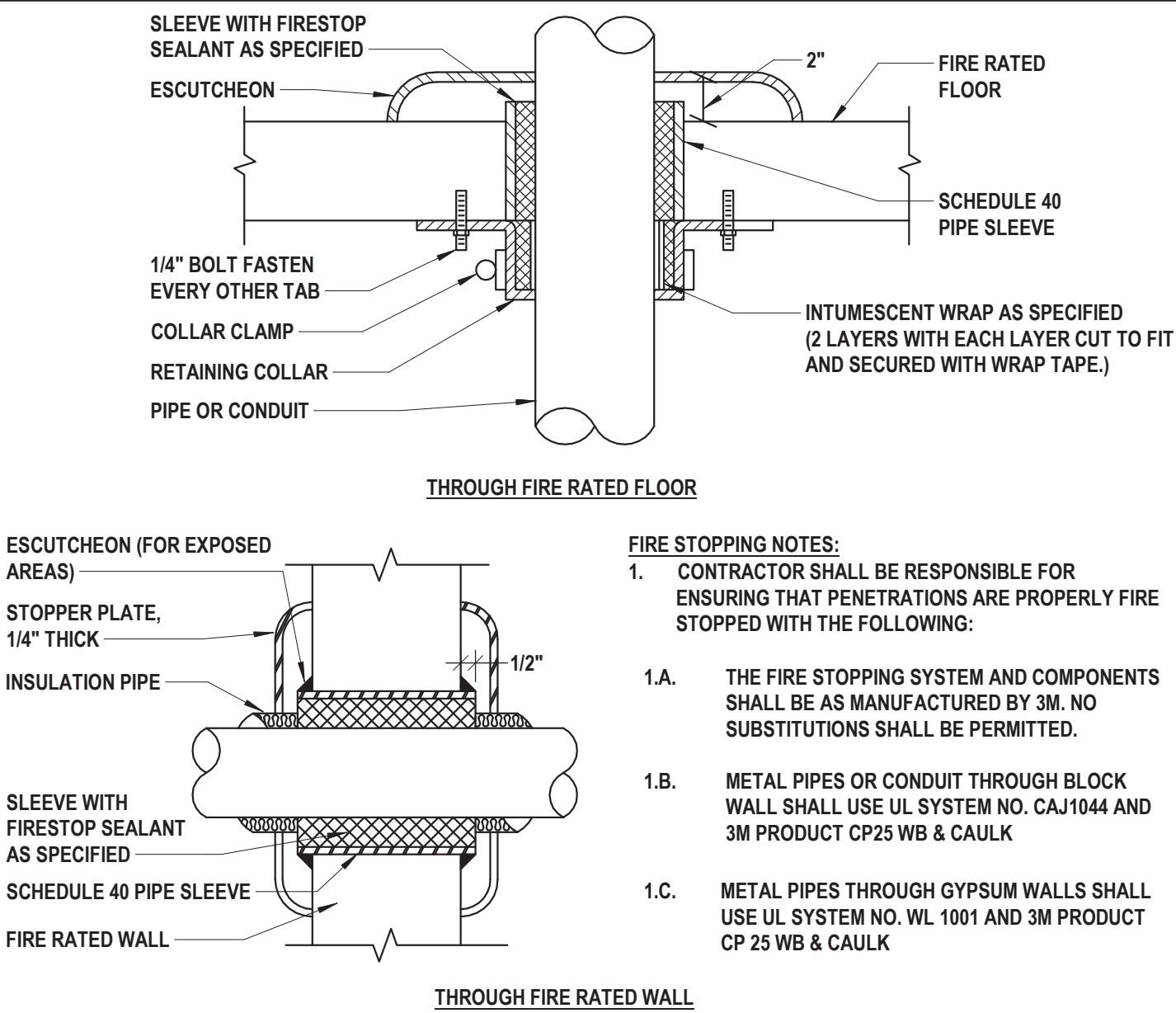
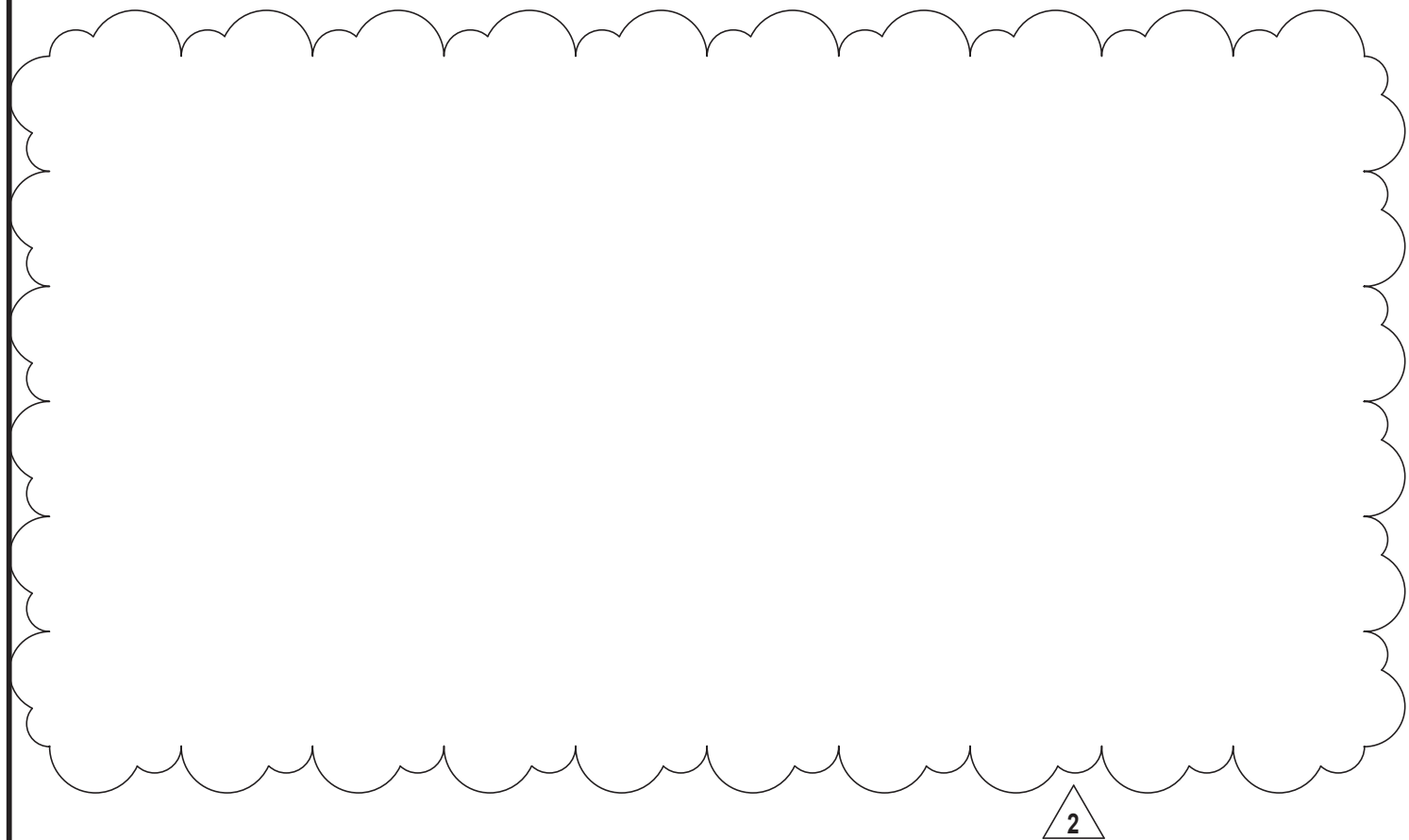
**P 120.01**





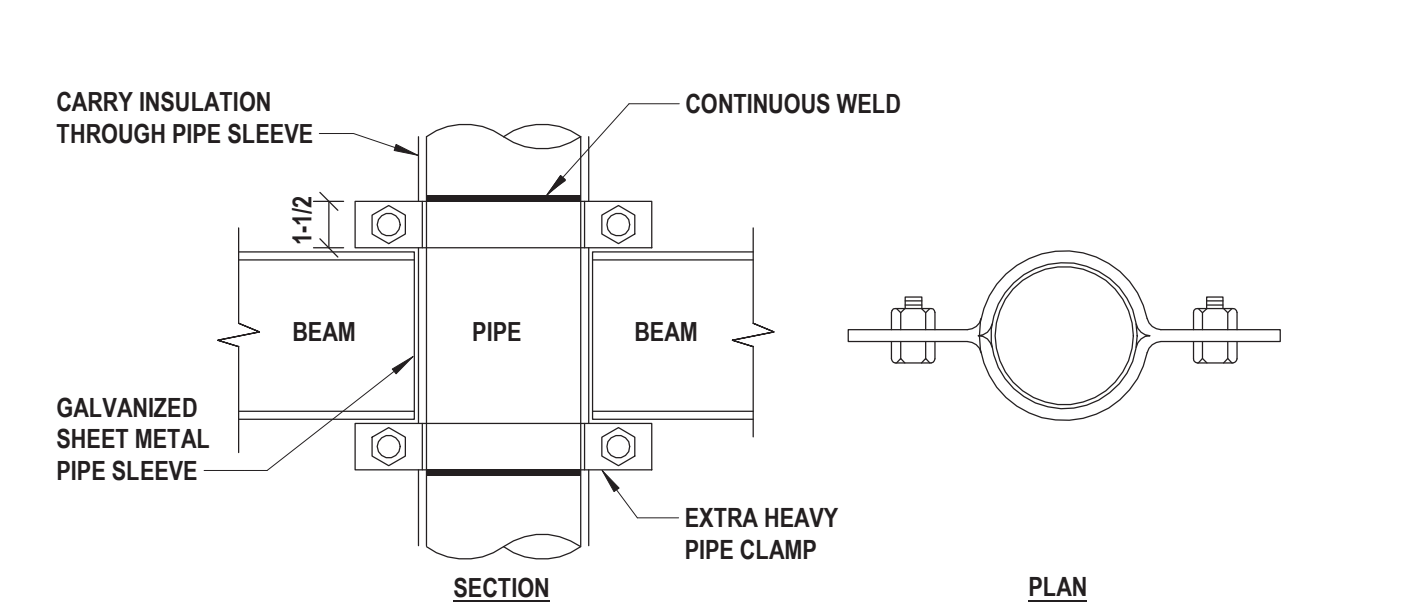
1 Lawn Irrigation Supply

SCALE: N.T.S.



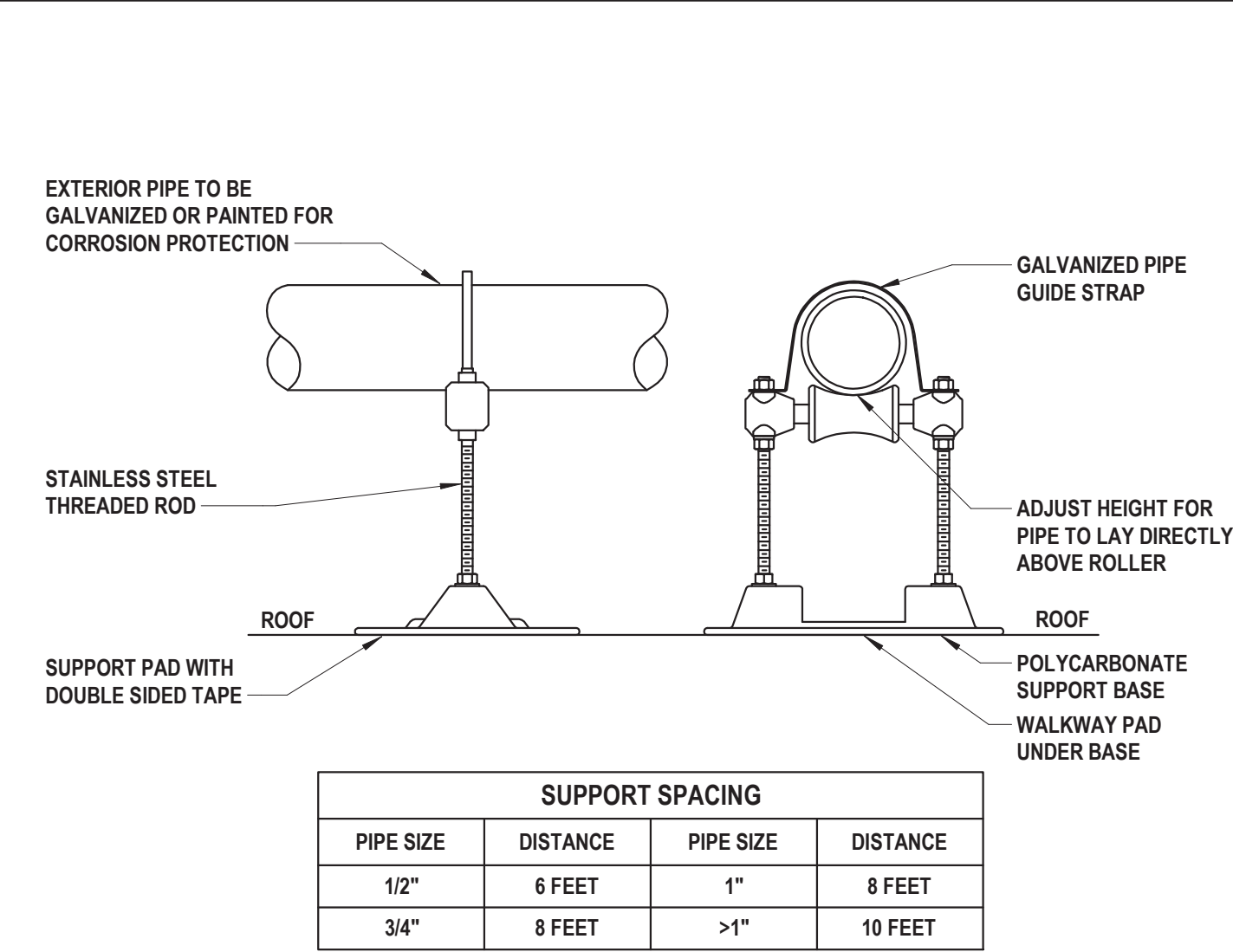
2 Pipe Penetration Through Rated Construction

SCALE: N.T.S.



6 Typical Riser Anchor

SCALE: N.T.S.



3 Roof Pipe Support

SCALE: N.T.S.



4 Storm Overflow Drain Outlet

SCALE: N.T.S.




H2M

architects  
+  
engineers

538 Broad Hollow Road, 4th Floor East  
Melville, NY 11747  
631.756.8000 • www.h2m.com  
NY Architecture & Landscape Architecture: No Certificate Required  
NY Engineering Certificate of Authorization No.: 0018178

CONSULTANTS:		

MARK	DATE	DESCRIPTION
2	03/24/2025	BID ADDENDUM NO. 2



10/31/2027  
Exp. Date

**JONATHAN R. MURATORE, P.E.**  
NY PROFESSIONAL ENGINEER Lic. No. 096440

IN ACCORDANCE WITH ARTICLE 146, SECTION 7209 OF THE NYS EDUCATION LAW,  
ALTERATION OF THIS DOCUMENT EXCEPT BY A LICENSED PROFESSIONAL, IS ILLEGAL.

DESIGNED BY: CRG	DRAWN BY: MPF/CRG	CHECKED BY: JRM	REVIEWED BY: JRM
PROJECT No: TRFD 2302	DATE: FEBRUARY 2025	SCALE: AS SHOWN	

CLIENT

THIELLS  
ROSEVILLE FIRE  
DISTRICT

NEW 26-100 FIRE  
HEADQUARTERS



65 W RAMAPO ROAD  
GARNERVILLE, NY 10923

CONTRACT

CONTRACT P  
PLUMBING CONSTRUCTION

STATUS

FINAL BID DOCUMENT

SHEET TITLE

PLUMBING DETAILS (2 OF 2)

DRAWING No.

P 501.01



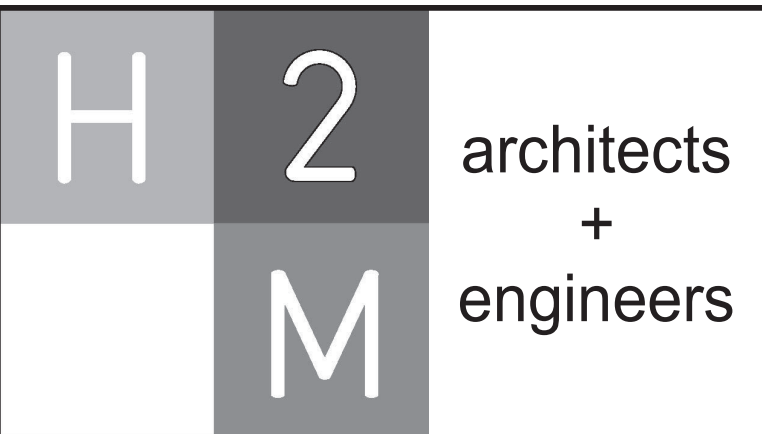
C:\Users\lgalle\Documents\Revit Backup\TRFD2302\_Central23\A\_Cgalle\JCWC.rvt

PLUMBING FIXTURE SCHEDULE

FIXTURE TAG	DESCRIPTION	MAKE	MODEL	BASIS OF DESIGN				MINIMUM CONNECTION SIZES						VENT	SPECIFICATION	REMARKS
				MAKE	TRIM/FAUCET MODEL	OPERATION	MAX FLOW	COLD WATER SIZE	WFU	HOT WATER SIZE	WFU	DRAIN SIZE	DFU			
LAV-1 (HC)	LAVATORY WASHSTATION - WALL MOUNT - ADA COMPLIANT - SINGLE BOWL	BRADLEY	LD-3010	BRADLEY	S53-3300	SENSOR	0.5 GPM	1/2"	0.5	1/2"	0.5	1-1/2"	1	1-1/2"	SINK: WALL MOUNTED WASHSTATION WITH DECK, INTEGRAL SINGLE BOWL, BACKSPASH, FRONT APRON, FAUCET, AND SOAP DISPENSER. BRADLEY OMNIDECK OR APPROVED EQUAL. DECK SHALL BE 30"L X 22"D AND SHALL HAVE A TERREEN SOLID SURFACE WITH INTEGRAL RECTANGULAR BOWL. BOWL SHALL BE BRADLEY MODEL WB-TR1 UNDERMOUNT TYPE IN ALPINE WHITE FINISH OR APPROVED EQUAL. SOAP DISPENSER SHALL BE BRADLEY MODEL 6-3300 WITH BRADLEY MODEL A14-029 AC POWER ADAPTER OR APPROVED EQUAL. PROVIDE 3" SIDE SPLASH ON "WALL SIDE" AND 3" SIDE APRON WITH GUSSET ON "OPEN SIDE" OF WASHSTATION AT ALL CORNER INSTALLATIONS. PROVIDE THE FOLLOWING ADDITIONAL OPTIONS AT EACH WASHSTATION: "EASE EDGE" EDGE STYLE, CENTER FAUCET HOLE WITH SOAP DISPENSER HOLE TO RIGHT OF FAUCET, SLEEVE MOUNTING TYPE, AND "STAIN" ACCESS PANEL TYPE.  FAUCET: DECK MOUNTED, ADA COMPLIANT, SENSOR ACTIVATION WITH 0.5 GPM AERATOR AND THERMOSTATIC MIXING ASSEMBLY. PROVIDE BRADLEY MODEL VA13-029 AC ADAPTER. COMPLIES WITH ASME A112.18.1 AND NSF 372.	PROVIDE BRASS ANGLE STOP VALVES WITH FLEXIBLE STAINLESS STEEL SUPPLIES, AND 1-1/2" BRASS P-TRAP. HOT WATER SHALL NOT EXCEED 105°F. INSULATE ALL EXPOSED DRAIN AND SUPPLY PIPING WITH TRUBRO LAVGUARD. PROVIDE MIFAB MC-41 FIXTURE CARRIER WITH CONCEALED ARMS FOR EACH LAVATORY BOWL.
LAV-2 (HC)	LAVATORY WASHSTATION - WALL MOUNT - ADA COMPLIANT - DOUBLE BOWL	BRADLEY	LD-3010	BRADLEY	S53-3300	SENSOR	0.5 GPM	1/2"	0.5	1/2"	0.5	1-1/2"	1	1-1/2"	SINK: WALL MOUNTED WASHSTATION WITH DECK, INTEGRAL SINGLE BOWL, BACKSPASH, FRONT APRON, FAUCET, AND SOAP DISPENSER. BRADLEY OMNIDECK OR APPROVED EQUAL. DECK SHALL BE 30"L X 22"D AND SHALL HAVE A TERREEN SOLID SURFACE WITH INTEGRAL RECTANGULAR BOWL. BOWL SHALL BE BRADLEY MODEL WB-TR1 UNDERMOUNT TYPE IN ALPINE WHITE FINISH OR APPROVED EQUAL. SOAP DISPENSER SHALL BE BRADLEY MODEL 6-3300 WITH BRADLEY MODEL A14-029 AC POWER ADAPTER OR APPROVED EQUAL. PROVIDE 3" SIDE SPLASH ON "WALL SIDE" AND 3" SIDE APRON WITH GUSSET ON "OPEN SIDE" OF WASHSTATION AT ALL CORNER INSTALLATIONS. PROVIDE THE FOLLOWING ADDITIONAL OPTIONS AT EACH WASHSTATION: "EASE EDGE" EDGE STYLE, CENTER FAUCET HOLE WITH SOAP DISPENSER HOLE TO RIGHT OF FAUCET, SLEEVE MOUNTING TYPE, AND "STAIN" ACCESS PANEL TYPE.  FAUCET: DECK MOUNTED, ADA COMPLIANT, SENSOR ACTIVATION WITH 0.5 GPM AERATOR AND THERMOSTATIC MIXING ASSEMBLY. PROVIDE BRADLEY MODEL A13-029 AC ADAPTER. COMPLIES WITH ASME A112.18.1 AND NSF 372.	PROVIDE BRASS ANGLE STOP VALVES WITH FLEXIBLE STAINLESS STEEL SUPPLIES, AND 1-1/2" BRASS P-TRAP. HOT WATER SHALL NOT EXCEED 105°F. INSULATE ALL EXPOSED DRAIN AND SUPPLY PIPING WITH TRUBRO LAVGUARD. PROVIDE MIFAB MC-41 FIXTURE CARRIER WITH CONCEALED ARMS FOR EACH LAVATORY BOWL.
LAV-3 (HC)	LAVATORY WASHSTATION - WALL MOUNT - ADA COMPLIANT - SINGLE BOWL - CUSTOM DECK	BRADLEY	LD-3010	BRADLEY	S53-3300	SENSOR	0.5 GPM	1/2"	0.5	1/2"	0.5	1-1/2"	1	1-1/2"	SINK: WALL MOUNTED WASHSTATION WITH DECK, INTEGRAL SINGLE BOWL, BACKSPASH, FRONT APRON, FAUCET, AND SOAP DISPENSER. BRADLEY OMNIDECK OR APPROVED EQUAL. DECK SHALL BE 30"L X 22"D AND SHALL HAVE A TERREEN SOLID SURFACE WITH INTEGRAL RECTANGULAR BOWL. BOWL SHALL BE BRADLEY MODEL WB-TR1 UNDERMOUNT TYPE IN ALPINE WHITE FINISH OR APPROVED EQUAL. SOAP DISPENSER SHALL BE BRADLEY MODEL 6-3300 WITH BRADLEY MODEL A14-029 AC POWER ADAPTER OR APPROVED EQUAL. PROVIDE 3" SIDE SPLASH ON "WALL SIDE" AND 3" SIDE APRON WITH GUSSET ON "OPEN SIDE" OF WASHSTATION AT ALL CORNER INSTALLATIONS. PROVIDE THE FOLLOWING ADDITIONAL OPTIONS AT EACH WASHSTATION: "EASE EDGE" EDGE STYLE, CENTER FAUCET HOLE WITH SOAP DISPENSER HOLE TO RIGHT OF FAUCET, SLEEVE MOUNTING TYPE, AND "STAIN" ACCESS PANEL TYPE.  FAUCET: DECK MOUNTED, ADA COMPLIANT, SENSOR ACTIVATION WITH 0.5 GPM AERATOR AND THERMOSTATIC MIXING ASSEMBLY. PROVIDE BRADLEY MODEL A13-029 AC ADAPTER. COMPLIES WITH ASME A112.18.1 AND NSF 372.	PROVIDE BRASS ANGLE STOP VALVES WITH FLEXIBLE STAINLESS STEEL SUPPLIES, AND 1-1/2" BRASS P-TRAP. HOT WATER SHALL NOT EXCEED 105°F. INSULATE ALL EXPOSED DRAIN AND SUPPLY PIPING WITH TRUBRO LAVGUARD. PROVIDE MIFAB MC-41 FIXTURE CARRIER WITH CONCEALED ARMS FOR EACH LAVATORY BOWL.
LAV-4 (HC)	SURGICAL SCRUB SINK - WALL MOUNT - ADA COMPLIANT	WHITEHALL	4121ADA-MC-EFW-SWV	WHITEHALL	---	SENSOR	0.5 GPM	1/2"	0.5	1/2"	0.5	1-1/2"	1	1-1/2"	SINK: WALL MOUNTED SCRUB SINK WITH TYPE 304 STAINLESS STEEL CABINET, INTEGRAL SENSOR FAUCET WITH TEMPERATURE/PRESSURE BALANCING MIXING VALVE, 1-1/2" P TRAP WITH 3" FLAT STRAINER DRAIN, EYE/FACE WASH WITH EMERGENCY MIXING VALVE (WHITEHALL ET71-1 OR APPROVED EQUAL) AND SWIVEL NOZZLE ON GOOSENECK, AND REMOVABLE FRONT ACCESS PANEL ON CABINET.  FAUCET: INTEGRAL TO SINK	PROVIDE BRASS ANGLE STOP VALVES WITH FLEXIBLE STAINLESS STEEL SUPPLIES, AND 1-1/2" BRASS P-TRAP. MAXIMUM WATER TEMPERATURE FROM FAUCET SHALL NOT EXCEED 105°F.
WC-1 (HC)	WATER CLOSET - WALL MOUNTED - ADA COMPLIANT - TOP SPUD	KOHLER	K-84325	AMERICAN STANDARD	606B.121	SENSOR	1.28 GPF	1"	10	---	---	3"	4	1-1/2"	TOILET: VITREOUS CHINA, 12-INCH ROUGH-IN, ADA COMPLIANT, ELONGATED BOWL, TOILET SEAT, WATER SENSE, SIPHON JET, COMPLIES WITH ASME A112.19.2. PROVIDE TOILET SEAT CHURCH 295CT OR APPROVED EQUAL. MINIMUM OF 25 PSI.	COORDINATE GRAB BAR HEIGHT WITH FLUSH VALVE.
															FLUSH VALVE: FLUSH VALVE: EXPOSED SENSOR FLUSHOMETER, POLISHED CHROME, ADA COMPLIANT, VANDAL RESISTANT. COMPLIES WITH ASSE 1037. PROVIDE AMERICAN STANDARD MODEL PK00.HAC POWER KIT.	
UR-1 (HC)	URINAL - WALL MOUNTED - ADA COMPLIANT - TOP SPUD	KOHLER	K-4991-ET	AMERICAN STANDARD	606B.013	SENSOR	0.125 GPF	3/4"	5	---	---	3"	4	3/4"	URINAL: VITREOUS CHINA, ADA HEIGHT, WALL MOUNTED, ASME A112.19.2.  FLUSH VALVE: EXPOSED SENSOR FLUSHOMETER, POLISHED CHROME, ADA COMPLIANT, VANDAL RESISTANT. COMPLIES WITH ASSE 1037. PROVIDE AMERICAN STANDARD MODEL PK00.HAC POWERKIT AND NO PIPE SEALANT ALLOWED.	PROVIDE CARRIER SUPPORT WATTS CA-311 OR APPROVED EQUAL.
DF-1 (HC)	DRINKING FOUNTAIN - WALL MOUNTED - ADA COMPLIANT	SLOAN	DRS110-FIL-REF-S S	---	---	MANUAL / SENSOR	8 GPH	1/2"	0.25	---	---	1-1/4"	0.5	1-1/2"	SINGLE LIGHT GREY WATER COOLER. REQUIRES (1) ELECTRICAL RECEPTACLES. COMPLIES WITH ASME A112.19.3 AND NSF 61.	PROVIDE SERVICE STOP WITH ACCESS AND ADDITIONAL FILTER (SLOAN FC-3000)
MS-1	MOP SINK - FLOOR MOUNTED	ADVANCE TABCO	9-OP-40DF	ADVANCE TABCO	K-240	MANUAL	9.6 GPM	3/4"	2.25	3/4"	2.25	3"	2	1-1/2"	DROP-FRONT ONE-PIECE MOP SINK, STAINLESS STEEL 3" DRAIN BODY WITH STRAINER. BRASS CHROME PLATED SERVICE FAUCET WITH VACUUM BREAKER, INTEGRAL STOPS, ADJUSTABLE WALL SUPPORT BRACKET, PAII, HOOK AND 3/4" HOSE THREAD ON SPOUT. COMPLIES WITH ASME A112.18.2.	PROVIDE STAINLESS STEEL SIDE AND BACK SPLASHES (ADVANCE TABCO K-298), HOSE AND HOSE HANGER (ADVANCE TABCO K-244), AND 3" P-TRAP.
SK-1	SINK - STAINLESS - ONE COMPARTMENT - DRAINBOARD	ADVANCE TABCO	FC-1-1824-18R	ADVANCE TABCO	K-112	MANUAL	2.2 GPM	3/4"	2.25	3/4"	2.25	2"	2	2"	SINK: FREESTANDING, 16-GAUGE 304 STAINLESS STEEL SINK WITH DRAINBOARD, TILE EDGE BACKSPASH, ROLLED RIM EDGE. NSF CERTIFIED.  FAUCET: BRASS CHROME PLATED BODY WITH CHROME PLATED HANDLES, 12" SWING SPOUT. COMPLIES WITH ASME A112.18.1M.	PROVIDE BRASS ANGLE STOP VALVES WITH FLEXIBLE STAINLESS STEEL SUPPLIES, AND 1-1/2" BRASS P-TRAP.
															SINK: UNDERMOUNT, 18-GAUGE STAINLESS STEEL SINK. BOWL SHALL HAVE DIMENSIONS OF 16" W X 22" L X 6" D. POLISHED SATIN FINISH. COMPLIES WITH ASME A112.19.3 AND ADA REQUIREMENTS.  FAUCET: PLOISHED CHROME WITH SINGLE LEVER HANDLE, HIGH ARCH SPOUT. COMPLIES WITH NSF 61 & 372, AND ASME A112.18.1	
WF-1	WASH FOUNTAIN - ADA COMPLIANT - BACKSPASH - FOOT ACTIVATED	BRADLEY	WF2704	---	---	MANUAL	1.0 GPM	1/2"	2.25	1/2"	2.25	2"	2	1-1/2"	SEMI-CIRCULAR WASHFOUNTAIN, 14 GAUGE STAINLESS STEEL, OFF-LINE VENT WITH SUPPLIES FROM BELOW, STANDARD HEIGHT, FOOT ACTIVATION, THERMOSTATIC MIXING VALVE, METAL-CLAD LIQUID SOAP DISPENSER, STAINLESS STEEL BACKSPASH. COMPLIES WITH ASME A112.18.1.	PROVIDE 2" P TRAP.
SH-1	SHOWER BASE - 36" x 36" - ADA COMPLIANT - TRENCH DRAIN - SHOWER FAUCET	INPRO	FRONT TRENCH DRAIN SHOWER BASE	KOHLER	SEE REMARKS	MANUAL	2 GPM	1/2"	3	1/2"	3	2"	2	1-1/2"	PAN: TRANSFER SHOWER PAN, ACRYLIC, WITH INTEGRAL TRENCH DRAIN, ANSI Z124, ALCOVE TYPE, WITH NON SLIP BOTTOM, 1/4" THRESHOLD.  SHOWER: TRIM PACKAGE: KOHLER K-TS35320-4, SHOWER KIT: K-76471-G, 1.75 GPM WATERSENSE SHOWER HEAD & HAND SHOWER, 60" RIBBON HOSE, FAUCET TRIM WITH LEVER HANDLE. ROUGH VALVE BODY: K-28304-KS, UNIVERSAL ROUGH VALVE BODY WITH DIVERTER VALVE ROUGH IN. ALL FAUCET PARTS TO COMPLY WITH ADA REGULATIONS, ASME A112.18.1, AND APPROVED EQUAL.	
SH-2	SHOWER BASE - 60" x 30" - ADA COMPLIANT - TRENCH DRAIN - SHOWER FAUCET	INPRO	FRONT TRENCH DRAIN SHOWER BASE	KOHLER	SEE REMARKS	MANUAL	2 GPM	1/2"	3	1/2"	3	2"	2	1-1/2"	PAN: TRANSFER SHOWER PAN, ACRYLIC, WITH INTEGRAL TRENCH DRAIN, ANSI Z124, ALCOVE TYPE, WITH NON SLIP BOTTOM, 1/4" THRESHOLD.  SHOWER: TRIM PACKAGE: KOHLER K-TS35320-4, SHOWER KIT: K-76471-G, 1.75 GPM WATERSENSE SHOWER HEAD & HAND SHOWER, 60" RIBBON HOSE, FAUCET TRIM WITH LEVER HANDLE. ROUGH VALVE BODY: K-28304-KS, UNIVERSAL ROUGH VALVE BODY WITH DIVERTER VALVE ROUGH IN. ALL FAUCET PARTS TO COMPLY WITH ADA REGULATIONS, ASME A112.18.1, AND APPROVED EQUAL.	
VB-1	WATER SUPPLY VALVE BOX - DOUBLE	SIoux CHIEF	696-G2(R) SERIES (R) DENOTES FIRE RATING	---	---	MANUAL	---	1/2"	1	1/2"	1	2"	2	2"	LAUNDRY SUPPLY BOX WITH WATER HAMMER ARRESTOR. 1/2" CW AND HW SUPPLY CONNECTIONS WITH 1/4 TURN BALL VALVE. PROVIDE FIRE RATED ENCLOSURE WHEN INSTALLED IN FIRE RATED WALLS. 2" DRAIN OUTLET CONNECTION. DRAIN SHALL BE SECURED TO BOX.	PROVIDE 18" DEEP SEAL TRAP FOR SUDS ZONE.
VB-1	WATER SUPPLY VALVE BOX - SINGLE	SIoux CHIEF	696-G1(R) SERIES (R) DENOTES FIRE RATING	---	---	MANUAL	---	1/2"	0.25	---	---	---	---	---	ICE MAKER SUPPLY BOX WITH WATER HAMMER ARRESTOR. 1/2" CW SUPPLY CONNECTION WITH 1/4 TURN BALL VALVE. PROVIDE FIRE RATED ENCLOSURE WHEN INSTALLED IN FIRE RATED WALLS.	
HB-1	HOSE BIBB - INTERIOR WITH KEY	WOODFORD	24P-3/4	---	---	MANUAL	---	3/4"	---	---	---	---	---	---	WALL FAUCET WITH ASSE STANDARD 1011 APPROVED ANTI-SIPHON VACUUM BREAKER, 3/4" MALE HOSE THREAD OUTLET SPOUT, LOOSE TEE KEY HANDLE.	
HB-2	WALL HYDRANT - FROST FREE	WOODFORD	MB65	---	---	MANUAL	---	3/4"	---	---	---	---	---	---	FREEZELESS WALL HYDRANT WITH ASSE STANDARD 1011 APPROVED VACUUM BREAKER, 3/4" MALE HOSE THREAD OUTLET SPOUT, ALL BRASS, TEE KEY OPERATED.	
HR-1	HOSE REEL - WATER - WALL MOUNTED	HANNAY	1816-17-18	---	---	MANUAL	---	1	---	---	---	---	---	---	MANUAL REWIND HOSE REEL. UNIT TO HAVE 1" FEMALE NPT INLET CONNECTED TO 90 DEGREE BALL BEARING SWIVEL JOINT, 3/4" FEMALE NPT OUTLET, CAM-LOCK DRAG BRAKE, SPRING ACTUATED PIN LOCK. REEL TO HAVE CAPACITY TO STORE 50 FT OF 1-9/32" O.D. HOSE. HOSE TO BE RMA CLASS A BLACK NITRILE WITH SYNTHETIC YARN REINFORCEMENT AND RMA CLASS B RED NBR BLEND COVER. HOSE SHALL HAVE AN I.D. OF 3/4", A MAXIMUM O.D. OF 1-9/32", AND BE RATED TO 300 PSI.	FOR EACH REEL, PROVIDE 50' OF HOSE LENGTH WITH 3/4" MALE NPT FITTING AT EACH END, MAKE FINAL CONNECTION TO REEL INLET WITH FLEXIBLE CONNECTOR. PROVIDE ASSE 1022 COMPLIANT VACUUM BREAKER AT FINAL...
HR-2	HOSE REEL - AIR - CEILING MOUNTED	HANNAY	N716-19-20-10.5J	---	---	MANUAL	---	1	---	---	---	---	---	---	SPRING REWIND HOSE REEL. UNIT TO HAVE 1/2" FEMALE NPT INLET CONNECTED TO 90 DEGREE BALANCED PRESSURE SWIVEL JOINT, 1/2" FEMALE NPT OUTLET, DECLUTCHING ARBOR TO PREVENT DAMAGE FROM REVERSE WINDING, AND 4-WAY ROLLER ASSEMBLY. REEL TO HAVE CAPACITY TO STORE 50 FEET OF 3/4" O.D. HOSE. HOSE TO BE RMA CLASS A BLACK NITRILE WITH SYNTHETIC YARN REINFORCEMENT AND RMA CLASS B RED NBR BLEND COVER. HOSE SHALL HAVE AN I.D. OF 3/8", A MAXIMUM O.D. OF 3/4", AND BE RATED TO 300 PSI.	PROVIDE UNIT WITH "VR" ROLLER POSITION. FOR EACH REEL PROVIDE 50' OF HOSE LENGTH WITH 1/2" MALE NPT FITTING AT INLET END, QUICK CONNECT FITTING AND HOSE STOP AT OUTLET END. MAKE FINAL CONNECTION TO REEL INLET WITH 12" FLEXIBLE STAINLESS STEEL CONNECTOR.
PF-1	POT FILL - WALL MOUNT	KROWNE	16-182L	---	---	MANUAL	---	1/2"	0.5	---	---	---	---	---	POT FILL: SOLID CHROME PLATED BRASS UNIT TO HAVE 1/2" MALE NPS INLET CONNECTED TO 24" SWING SPOUT. 1/4 TURN SINGLE CHROME PLATED LEVER HANDLE.	
FS-1	FLOOR SINK	ZURN	Z1900	---	---	---	---	---	---	---	---	---	2	2"	FLOOR SINK: WHITE ACID RESISTANT PORCELAIN ENAMEL COATED INTERIOR, LOOSE SET PORCELAIN ENAMEL COATED CAST 3/4 IRON GATE, POLYPROPYLENE DOME BOTTOM STRAINER, NO HUB OUTLET.	PROVIDE TRAP SEALS: ZURN Z1072. SEE PLANS FOR SIZES.
FD-1	FLOOR DRAIN (CONCRETE FLOORS)	ZURN	ZB415-BZ1-VP	---	---	---	---	---	---	---	---	---	2	2"	FLOOR DRAIN: DURA-COATED CAST IRON BODY. POLISHED BRONZE TOP AND VANDAL PROOF SECURED TOP.	PROVIDE TRAP SEALS: ZURN Z1072. SEE PLANS FOR SIZES.
TD-1	APPARATUS BAY TRENCH DRAIN	WATTS	ES-WD-DEADLEVE L-D	---	---	---	---	---	---	---	---	4"	---	2"	DRAIN TROUGH WITH LENGTHS SEGMENTED INTO INSIDE DIMENSIONS 48"L X 6"W WITH DEPTH AND CONFIGUARTION AS SPECIFIED BY MANUFACTURER. DUCTILE IRON FRAME WITH UV-STABILIZED POLYPROPELENE CHANNELS. INCLUDES FRAME CONNECTORS, GRATE LOCKDOWNS, AND CONSTRUCTION COVERS AND END-OUTLETS.	PROVIDE 4" PVC P-TRAP AND ADDITIONAL WIRE STRAINER BASKET, REMOVABLE FOR CLEANING, THAT PREVENTS PASSAGE OF SOLIDS 1/2" OR LARGER IN SIZE.
TD-2	WASHER-EXTRACTOR TROUGH DRAIN	STREIM	TT-4	---	---	---	---	---	---	---	---	4"	---	2"	DRAIN TROUGH WITH INSIDE DIMENSIONS 48"L X 18"W X 12"D. 3/4" POLYETHYLENE PROTECTIVE CASING WITH REMOVABLE, CORROSION-RESISTANT FILTER SCREEN AND SECONDARY FILTER BASKET. INCLUDES PLAIN END OUTLET.	PROVIDE 4" PVC P-TRAP AND ADDITIONAL WIRE STRAINER BASKET, REMOVABLE FOR CLEANING, THAT PREVENTS PASSAGE OF SOLIDS 1/2" OR LARGER IN SIZE.
RD-1	ROOF DRAIN - COMBINATION	ZURN	Z164-G-VP	---	---	---	---	---	---	---	---	---	---	---	12" DIAMETER COMBINATION ROOF DRAIN WITH 4-INCH DAM. DURA-COATED CAST IRON BODY AND DOME.	PROVIDE EXTENSION COLLARS AS REQUIRED TO ACCOMMODATE THICKNESS OF ROOF INSULATION. REFER TO ARCHITECTURAL PLANS FOR HEIGHTS. SEE PLANS FOR OUTLET SIZES.

- NOTES:
1. HC REPRESENTS HANDICAPPED PLUMBING FIXTURE. REFER TO ARCHITECTURAL PLANS FOR MOUNTING HEIGHTS FOR ACCESSIBLE FIXTURES.
2. ALL ELECTRONICALLY OPERATED PLUMBING FIXTURES SHALL BE HARD WIRED.


2



538 Broad Hollow Road, 4th Floor East  
Melville, NY 11747  
631.756.8000 • www.h2m.com  
NY Architecture & Landscape Architecture: No Certificate Required  
NY Engineering Certificate of Authorization No.: 0018178

CONSULTANTS:

MARK	DATE	DESCRIPTION
2	03/24/2025	BID ADDENDUM NO. 2



10/31/2027  
Exp. Date

**JONATHAN R. MURATORE, P.E.**  
NY PROFESSIONAL ENGINEER Lic. No. 096440

IN ACCORDANCE WITH ARTICLE 146, SECTION 7209 OF THE NYS EDUCATION LAW,  
A SIGNATURE ON THIS DOCUMENT EXPIRES IF A LICENSED PROFESSIONAL IS A LIAISON.

DESIGNED BY: <b>CRG</b>	DRAWN BY: <b>JWC</b>	CHECKED BY: <b>JRM</b>	REVIEWED BY: <b>JRM</b>
PROJECT No: <b>TRFD 2302</b>	DATE: <b>FEBRUARY 2025</b>	SCALE: <b>AS SHOWN</b>	

CLIENT

**THIELLS  
ROSEVILLE FIRE  
DISTRICT**

**NEW 26-100 FIRE  
HEADQUARTERS**



**65 W RAMAPO ROAD  
GARNERVILLE, NY 10923**

CONTRACT

**CONTRACT P  
PLUMBING CONSTRUCTION**

STATUS

**FINAL BID DOCUMENT**

SHEET TITLE

**PLUMBING SCHEDULES (1 OF 2)**

DRAWING No.

**P 600.01**