

ELECTRICAL LEGENDS		
SYMBOL	DESCRIPTION	COMMENTS
S <sub>3</sub>	THREE - WAY SWITCH	48" AFF TO CL
S <sub>4</sub>	FOUR - WAY SWITCH	48" AFF TO CL
S <sub>4</sub>	ILLUMINATED SWITCH	48" AFF TO CL
S <sup>A</sup>	SINGLE POLE SWITCH; "A" INDICATES SWITCH CONTROL	48" AFF TO CL
S <sub>D</sub>	SINGLE POLE DIMMER SWITCH	48" AFF TO CL
S <sub>3D</sub>	THREE - WAY DIMMER SWITCH	48" AFF TO CL
S <sub>K</sub>	SINGLE POLE KEYED SWITCH	48" AFF TO CL
S <sub>K3</sub>	KEYED THREE - WAY SWITCH	48" AFF TO CL
S <sub>K4</sub>	KEYED FOUR - WAY SWITCH	48" AFF TO CL
S <sub>P</sub>	SWITCH AND PILOT LIGHT	
S <sub>T</sub>	SWITCH WITH THERMAL OVERLOAD PROTECTION (CONTRACTOR SHALL COORDINATE VOLTAGE AND PHASE WITH EQUIPMENT)	
S <sub>OS/VS</sub>	OCCUPANCY/VACANCY SENSOR WITH MANUAL OVERRIDE, WALL MOUNT	
TC	TIME CLOCK	
E.G	EMERGENCY SHUT OFF SWITCH; 'E' INDICATES ELECTRICAL; 'G' INDICATES GAS	
	2 #12 AWG + #12 AWG GND IN 3/4" E.C. CONCEALED IN WALL OR CEILING	
	3 #12 AWG + #12 AWG GND IN 3/4" E.C. CONCEALED IN OR BELOW SLAB	
LP1-35	DEDICATED HOME RUN TO PANEL LP1 FOR CIRCUIT NO. 35 ONLY. 2 #12 AWG + #12 AWG GND IN 3/4" E.C. CONCEALED IN WALL OR CEILING	
	SIMPLEX RECEPTACLE: 120V, 20A. COORDINATE MOUNTING HEIGHT WITH MECHANICAL CONTRACTOR TO CLEAR BASEBOARDS.	FLUSH
	DUPLEX RECEPTACLE: 120V, 20A. COORDINATE MOUNTING HEIGHT WITH MECHANICAL CONTRACTOR TO CLEAR BASEBOARDS.	FLUSH
	QUAD RECEPTACLE, DOUBLE DUPLEX RECEPTACLE: 120V, 20A. COORDINATE MOUNTING HEIGHT WITH MECHANICAL CONTRACTOR TO CLEAR BASEBOARDS.	FLUSH
	DUPLEX RECEPTACLE: 120V, 20A; SUBSCRIPT "C" INDICATES CEILING MOUNT.	FLUSH
	DUPLEX RECEPTACLE: 120V, 20A; FLOOR MOUNTED.	FLUSH
	QUAD RECEPTACLE: 120V, 20A; FLOOR MOUNTED.	
	DUPLEX RECEPTACLE AND DATA JACK: 120V, 20A; FLOOR MOUNTED.	
	DATA JACK; FLOOR MOUNTED.	
	ISOLATED GROUND DUPLEX RECEPTACLE. COORDINATE MOUNTING HEIGHT WITH MECHANICAL CONTRACTOR TO CLEAR BASEBOARDS.	FLUSH
	DUPLEX RECEPTACLE: 120V, 20A; WITH GROUND FAULT INDICATOR. COORDINATE MOUNTING HEIGHT WITH MECHANICAL CONTRACTOR TO CLEAR BASEBOARDS.	FLUSH
	DUPLEX RECEPTACLE: 120V, 20A; SUBSCRIPT "UC" INDICATES UNDER COUNTER	AS PER ENGINEER
	DUPLEX RECEPTACLE: 120V, 20A; SUBSCRIPT "CT" INDICATES COUNTER TOP.	AS PER ENGINEER
	DUPLEX RECEPTACLE: 120V, 20A; SUBSCRIPT "WP" INDICATED WEATHER PROOF.	AS PER ENGINEER
	DUPLEX RECEPTACLE: 120V, 20A; SUBSCRIPT "USB" INDICATES INTEGRAL USB.	FLUSH
	SPECIAL PURPOSE OUTLET: 240V, 40A. VERIFY NEMA CONFIGURATION WITH EQUIPMENT MANUFACTURER.	AS PER ENGINEER
	TWISTED LOCK RECEPTACLE: 125V, 20A, 3 WIRE; UNLESS OTHERWISE NOTED.	AS PER ENGINEER
	SURFACE RACEWAY WITH 2 GROUNDED AND ISOLATED TYPE DUPLEX RECEPTACLES AND 1 DATA OUTLET PER POSITION, 18" AFF UNLESS OTHERWISE NOTED.	
	MAGNETIC STARTER "S1"; SEE STARTER SCHEDULE	
	DISCONNECTION SWITCH "DS1"; SEE DISCONNECT SWITCH SCHEDULE.	
	JUNCTION BOX.	
	NEMA 4X STAINLESS STEEL JUNCTION BOX WITH GASKET COVER.	
	JUNCTION BOX RECESSED IN WALL WITH BLANK COVER. PROVIDE 3/4" E.C. AND DRAG LINE TO ABOVE FINISHED CEILING. MOUNT 18" AFF, UNLESS OTHERWISE NOTED.	
	FOR MONITOR, JUNCTION BOX RECESSED IN WALL WITH BLANK COVER. PROVIDE 3/4" E.C. AND DRAG LINE TO ABOVE FINISHED CEILING.	
	FOR HAND DRYER, JUNCTION BOX RECESSED IN WALL WITH BLANK COVER. PROVIDE 3/4" E.C. AND DRAG LINE TO ABOVE FINISHED CEILING. COORDINATE MOUNTING HEIGHT WITH ARCHITECT.	
	TRANSFORMER "T1"; SEE TRANSFORMER SCHEDULE.	
	ELECTRICAL PANEL "P1", RECESSED; SEE PANEL SCHEDULE.	
	ELECTRICAL PANEL "P1", SURFACE MOUNT; SEE PANEL SCHEDULE.	
	CONDUIT GOING UP.	
	CONDUIT GOING DOWN.	
	TELEPHONE. PROVIDE CAT-6 CABLE IN 3/4" E.C. TO UTILITY ROOM (105) WITH J. BOX RECESSED IN WALL WITH RJ-11 COVER.	
	CABLE TELEVISION. PROVIDE COAXIAL CABLE IN 3/4" E.C. TO UTILITY ROOM (105) WITH J. BOX RECESSED IN WALL WITH COAXIAL COVER.	
	DATA. PROVIDE CAT-6 CABLE IN 3/4" E.C. TO UTILITY ROOM (105) WITH J. BOX RECESSED IN WALL WITH RJ-45 COVER.	
	COMBINED DATA AND TV. PROVIDE (2) TWO CAT-6 CABLES IN 3/4" E.C. TO UTILITY ROOM (105) WITH J. BOX RECESSED IN WALL WITH RJ-45/RJ-11 COVER.	
	SECURITY CAMERA. PROVIDE 3/4" E.C. WITH DRAG LINE TO THE OFFICE AND EMPTY J. BOX RECESSED IN WALL WITH BLANK COVER.	

ABBREVIATION	DESCRIPTION	COMMENTS
AFF	ABOVE FINISHED FLOOR	
AFC	ABOVE FINISHED CEILING	
AFCI	ARC FAULT CIRCUIT INTERRUPTER	
AFG	ABOVE FINISHED GRADE	
AHJ	AUTHORITY HAVING JURISDICTION	
AMP, A	AMPERE	
ATS	AUTOMATIC TRANSFER SWITCH; SEE TRANSFER SWITCH SCHEDULE	
AWG	AMERICAN WIRE GAUGE	
BFC	BELOW FINISHED CEILING	
CL	CENTERLINE	
CT	COUNTER TOP	
EC	ELECTRICAL CONDUIT	
GFCI	GROUND FAULT CIRCUIT INTERRUPTER	
GFI	GROUND FAULT INDICATOR	
GND	GROUND	
CH	CENTRAL HUDSON (ELECTRIC UTILITY)	
MCB	MAIN CIRCUIT BREAKER	
MLO	MAIN LUGS ONLY	
NTS	NOT TO SCALE	
TYP	TYPICAL	
UON	UNLESS OTHERWISE NOTED	
UC	UNDER COUNTER	
V	VOLT	
VAC	VOLTS ALTERNATING CURRENT	
VDC	VOLTS DIRECT CURRENT	
X-FMR	TRANSFORMER	
WP	WEATHERPROOF	

SINGLE LINE DIAGRAM LEGEND		
SYMBOL	DESCRIPTION	COMMENTS
	LINE VOLTAGE THERMOSTAT, 120V, 10A.	
	CIRCUIT BREAKER WITH TRIP AND POLES AS NOTED; 100 AMP FRAME, 100 AMP TRIP.	
	TRANSFER SWITCH 'TS1'; SEE TRANSFER SWITCH SCHEDULE.	
	DISTRIBUTION PANEL P1 WITH 30A, 2 POLE M.C.B.; SEE DISTRIBUTION PANEL SCHEDULE.	
	UNFUSED DISCONNECT SWITCH DS1, 100 AMP; SEE DISCONNECT SWITCH SCHEDULE.	
	FUSED DISCONNECT SWITCH 'DSI', FUSED AT 100 AMP SIZE, 100 AMP FUSED, 3 POLES; SEE DISCONNECT SWITCH SCHEDULE.	
	GENERATOR SET 'G'	
	ELECTRIC METER AND METER PAN AS PER CENTRAL HUDSON REQUIREMENTS.	
	MOTOR, NUMBER INDICATES HORSEPOWER.	
	CURRENT TRANSFORMERS.	
	VOLTAGE TRANSFORMERS.	
	UNINTERRUPTIBLE POWER SUPPLY	
	TRANSFORMER 'T2' WITH SIZE, PRIMARY AND SECONDARY VOLTAGES AS NOTED.	
	RACK OUT CIRCUIT BREAKER	
	REDUCED VOLTAGE SOLID STATE RAMPING MODULE, SIZED FOR 10 H.P.	
	REDUCED VOLTAGE SOLID STATE STARTER, SIZED FOR 150 H.P.	
	VARIABLE FREQUENCY DRIVE, RATED FOR 25 H.P.	
	FULL VOLTAGE NON-REVERSING STARTER, NEMA SIZE 6	
	FULL VOLTAGE REVERSING STARTER, NEMA SIZE 5	
	FAST ACTING SOLID STATE FUSES AS PER MANUFACTURER.	
	MULTIPLE BRANCH CIRCUITS AS REQUIRED.	
	CONTROL CIRCUIT; MIN 2 #12 AWG IN 3/4" E.C.	

LIST OF DRAWINGS	
E1 001.00	ELECTRICAL LEGENDS
ES-100.00	ELECTRICAL SITE PLAN (REFER TO PHASE II DWG)
E1 100.00	FIRST FLOOR & MEZZANINE ELECTRICAL LIGHTING AND POWER PLANS
E1 500.00	STORAGE BUILDING ELECTRICAL DETAILS
E1 501.00	STORAGE BUILDING ELECTRICAL DETAILS
E1 502.00	STORAGE BUILDING ELECTRICAL GENERATOR DETAILS
E1 503.00	STORAGE BUILDING ELECTRICAL GENERATOR DETAILS
E1 600.00	STORAGE BUILDING ELECTRICAL SINGLE LINE DIAGRAM

SYMBOLS LEGEND	
	ROOM DESIGNATION
	BUILDING SECTION CUT
	WALL SECTION CUT
	DETAIL KEY
	ELEVATION KEY
	COLUMN GRID
	ELEVATION LINE
	DRAWING TITLE
	INTERIOR ELEVATION REFERENCE
	SEE NOTE # ON DWG #


H2M

architects  
+  
engineers

538 Broad Hollow Road, 4th Floor East  
Melville, NY 11747  
631.756.8000 • www.h2m.com

CONSULTANTS:		

MARK	DATE	DESCRIPTION



“ALTERATION OF THIS DOCUMENT EXCEPT BY A LICENSED PROFESSIONAL IS ILLEGAL.”

DESIGNED BY: SMP	DRAWN BY: SMP	CHECKED BY: AWK	REVIEWED BY: AWK
PROJECT NO.: VGFD2001	DATE: JULY 2022	SCALE: AS SHOWN	

CLIENT

VAILS GATE FIRE DISTRICT



872 Blooming Grove Turnpike  
New Windsor, NY 12553

CONTRACT
CONTRACT G GENERAL CONSTRUCTION

STATUS
FINAL BID DOCUMENT

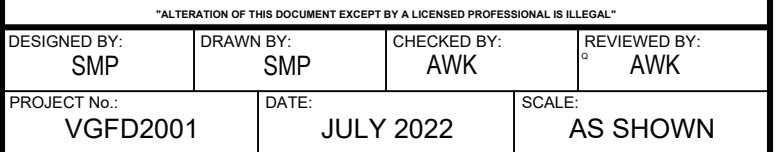
SHEET TITLE
ELECTRICAL LEGEND PHASE 1

DRAWING No.
E1 001.00



- \\h2m.com\shares\Projects\VGFD\VGFD (Vails Gate Fire Dept)\VGFD2001-Vails Gate FD-New Firehouse\02-BIM-CADD\Con-docs\elec\E1 100.00 - Electrical Floor Plan.dwg Plotted on: Jul 07, 2022 - 4:27pm



[illegible]

CONTRACT	<b>CONTRACT G</b> <b>GENERAL CONSTRUCTION</b>
----------	--

SHEET TITLE

**STORAGE BUILDING  
ELECTRICAL DETAILS**

DRAWING No. **E1 500.00**



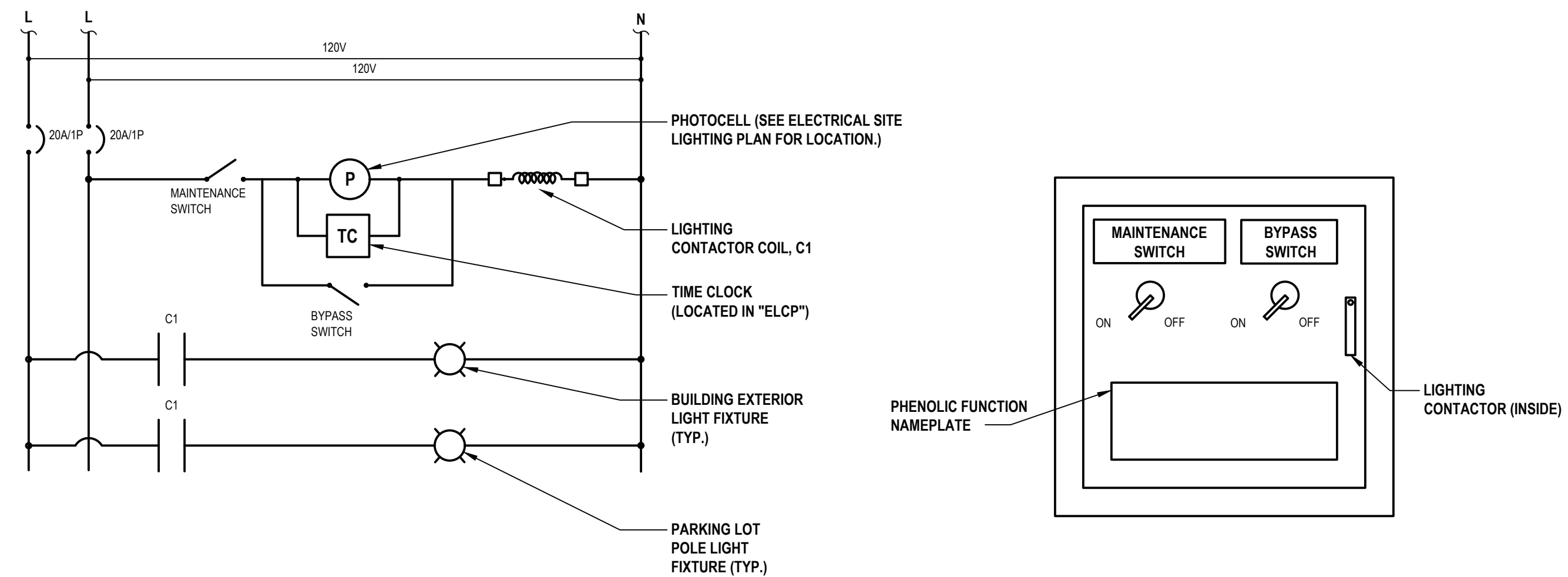
- ## 7 Accessible Ground Rod



- NOTES:**
1. PROVIDE AND INSTALL NEW LIGHTING CONTROLS, CONTROL WIRING, RELAYS, CONTACTORS, AND SENSORS. INSTALL CONTACTORS AND CONTACTORS IN NEW NEMA 1 HINGED DOOR ENCLOSURE. PROVIDE LOCKABLE HANDLE.
  2. FUNCTION NAMEPLATE DESCRIPTION:  
MAINTENANCE SWITCH - TURN TO "ON" POSITION FOR NORMAL OPERATION. TURN TO OFF POSITION TO PREVENT LIGHTS FROM TURNING ON  
BYPASS SWITCH - TURN TO "OFF" POSITION FOR NORMAL OPERATION. TURN TO "ON" POSITION TO TURN ON LIGHT FIXTURES. (MAINTENANCE SWITCH MUST BE IN "ON" POSITION).

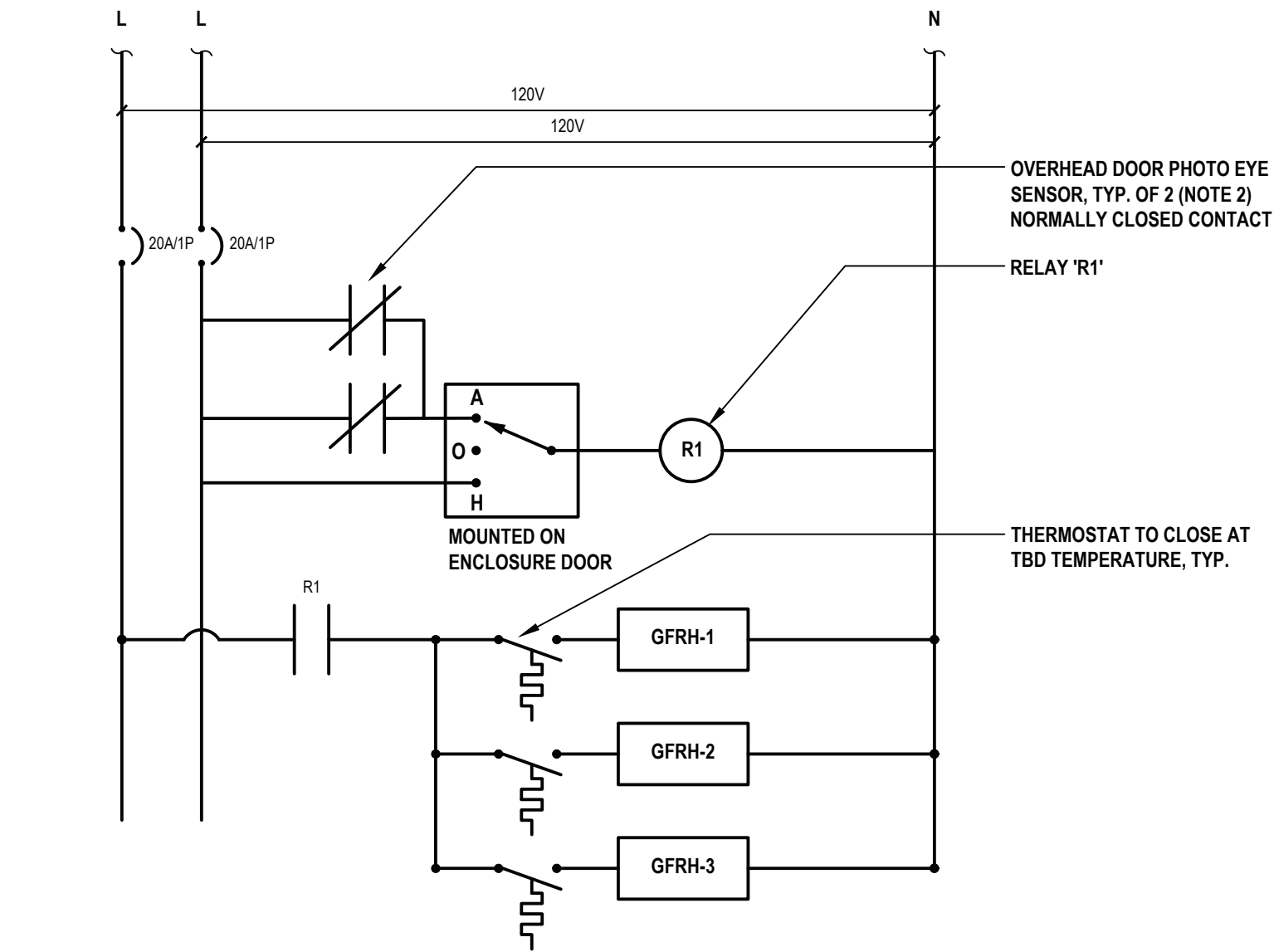


- NOTES:**
1. CONTRACTOR SHALL PROVIDE AND INSTALL ALL MOUNTING HARDWARE AND ACCESSORIES AS REQUIRED TO MOUNT CORD REEL TO CEILING.
  2. CONTRACTOR SHALL COORDINATE FINAL MOUNTING LOCATION WITH DISTRICT.
  3. COORDINATE FINAL PLUG END WIT DISTRICT/ OWNER IN FIELD.



**10 Exterior Lighting Control Panel**  
SCALE: NTS



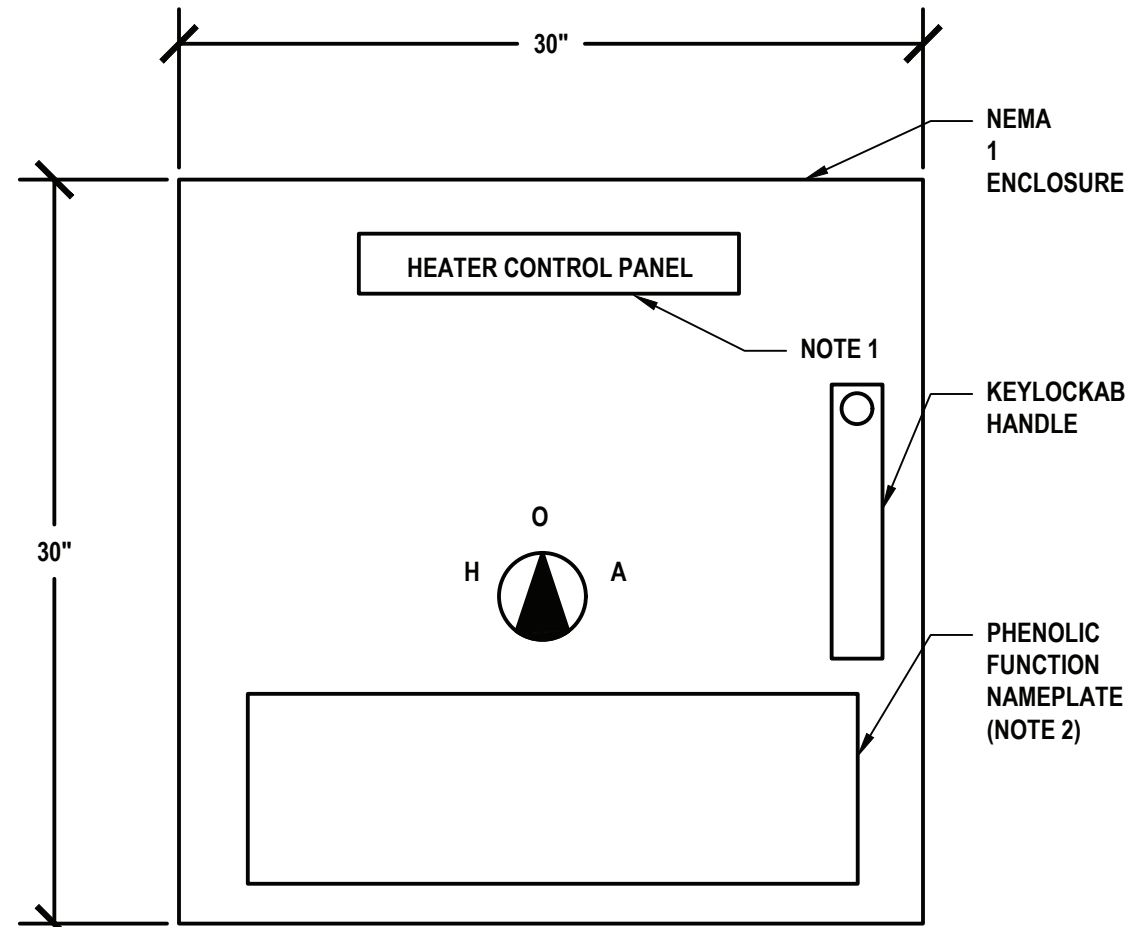


1 Apparatus Bay GFRH Control Panel Schematic

SCALE: NTS

NOTES:

- CONTRACTOR SHALL PROVIDE ALL REQUIRED RELAYS, CONTACTORS, CONTROL TRANSFORMERS, FUSES, HARDWARE, AND ACCESSORIES REQUIRED FOR COMPLETE CONTROL SYSTEM IN NEMA 1 ENCLOSURE.
- MOUNT PHOTO EYE SO THAT WHEN ANY OVERHEAD DOOR IS IN THE RAISED POSITION THE CONTACT INDICATED OPENS AND THE HEATERS ARE PREVENTED FROM RUNNING. PROVIDE ADDITIONAL DEVICES AND ACCESSORIES AS REQUIRED.

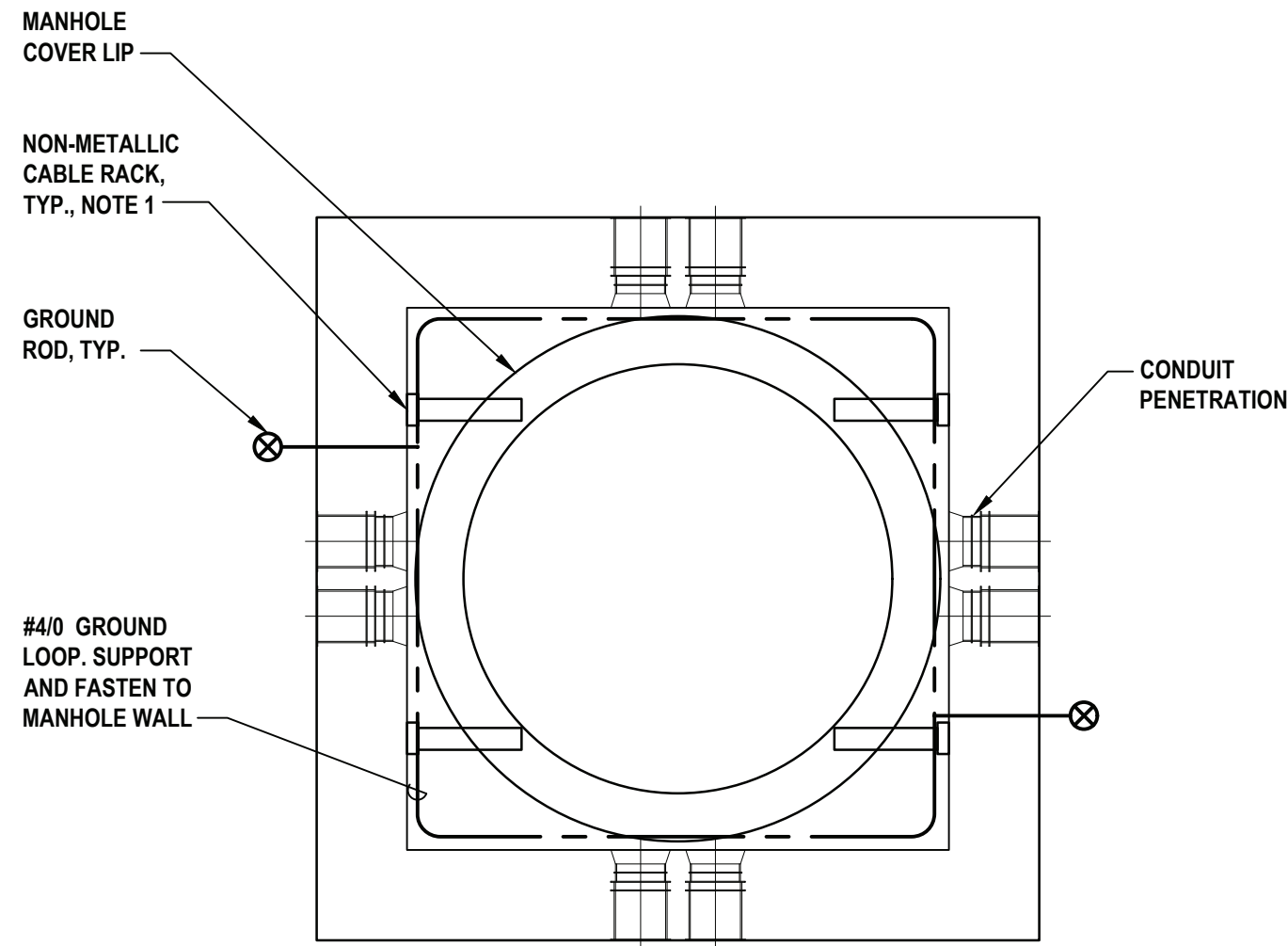


3 GFRHCP STD ELEVATION

SCALE: NTS

NOTES:

- FOR "GFRHCP" LABEL SHALL READ "HEATER CONTROL PANEL".
- PHENOLIC NAMEPLATE:  
FOR GFRHCP, HEATERS SHALL BE SHUT OFF AND PREVENT FROM RUNNING WHEN APPARATUS OVERHEAD DOORS ARE IN OPEN POSITION.

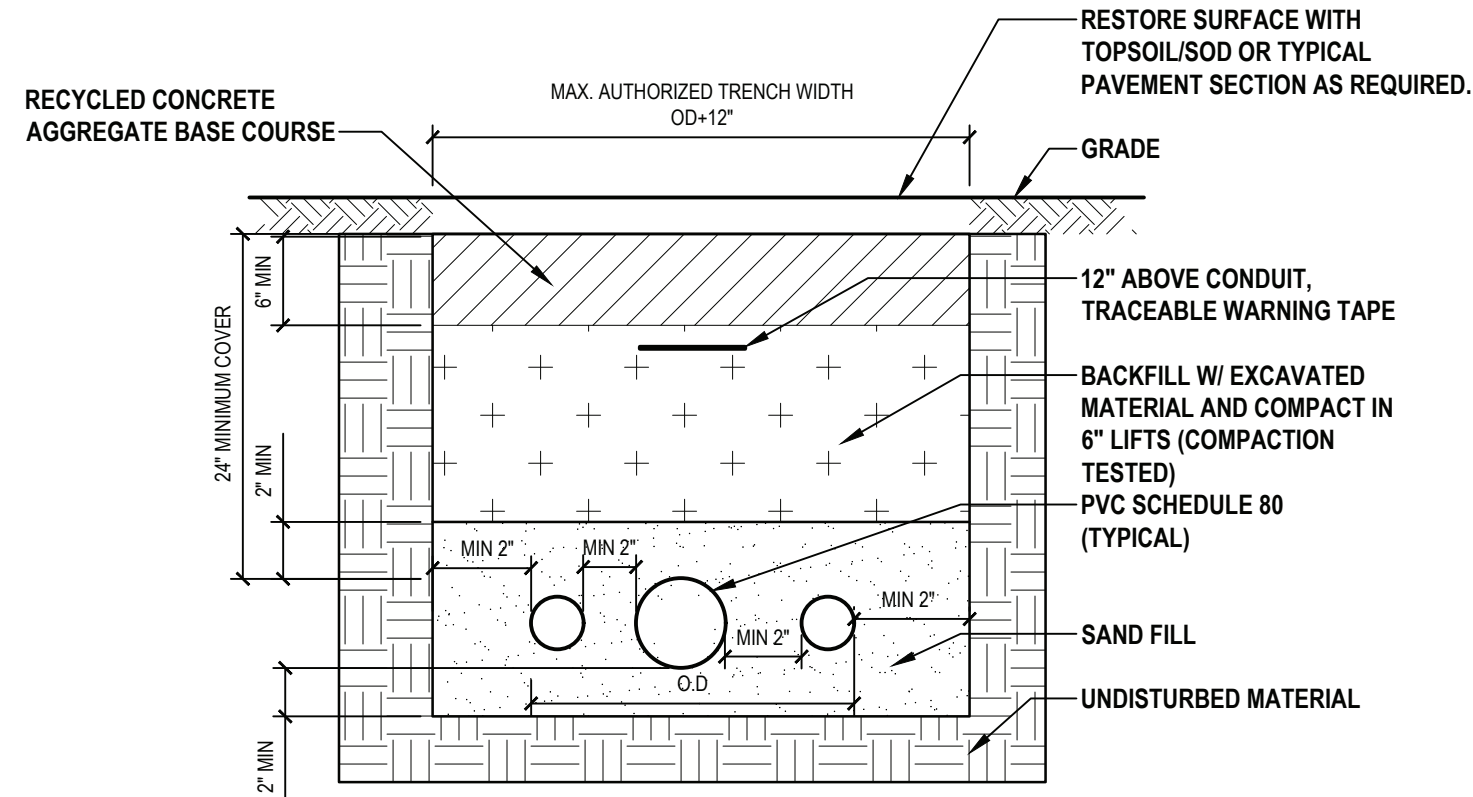


2 Electrical Manhole - Plan View

SCALE: NTS

NOTES:

- NUMBER OF CABLE RACKS SHOWN IS FOR REFERENCE ONLY. ACTUAL NUMBER OF RACKS MAY VARY PER MANHOLE.

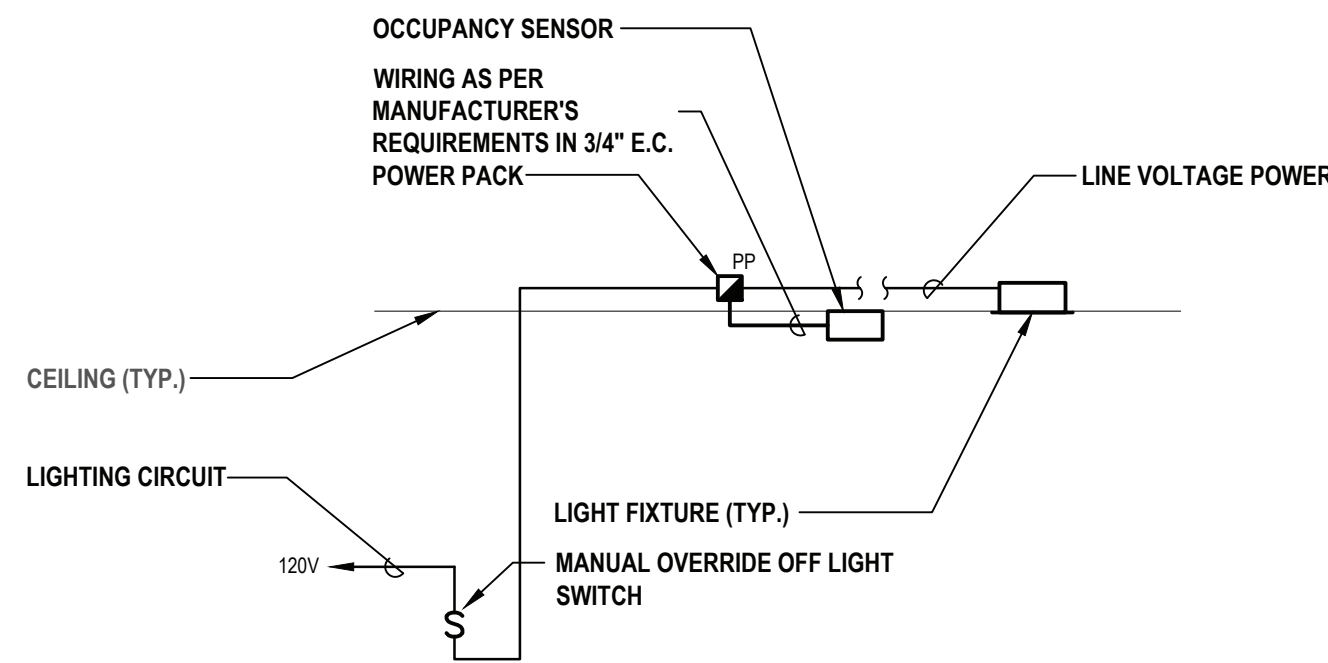


4 Typical Conduit Trench Detail

SCALE: NTS

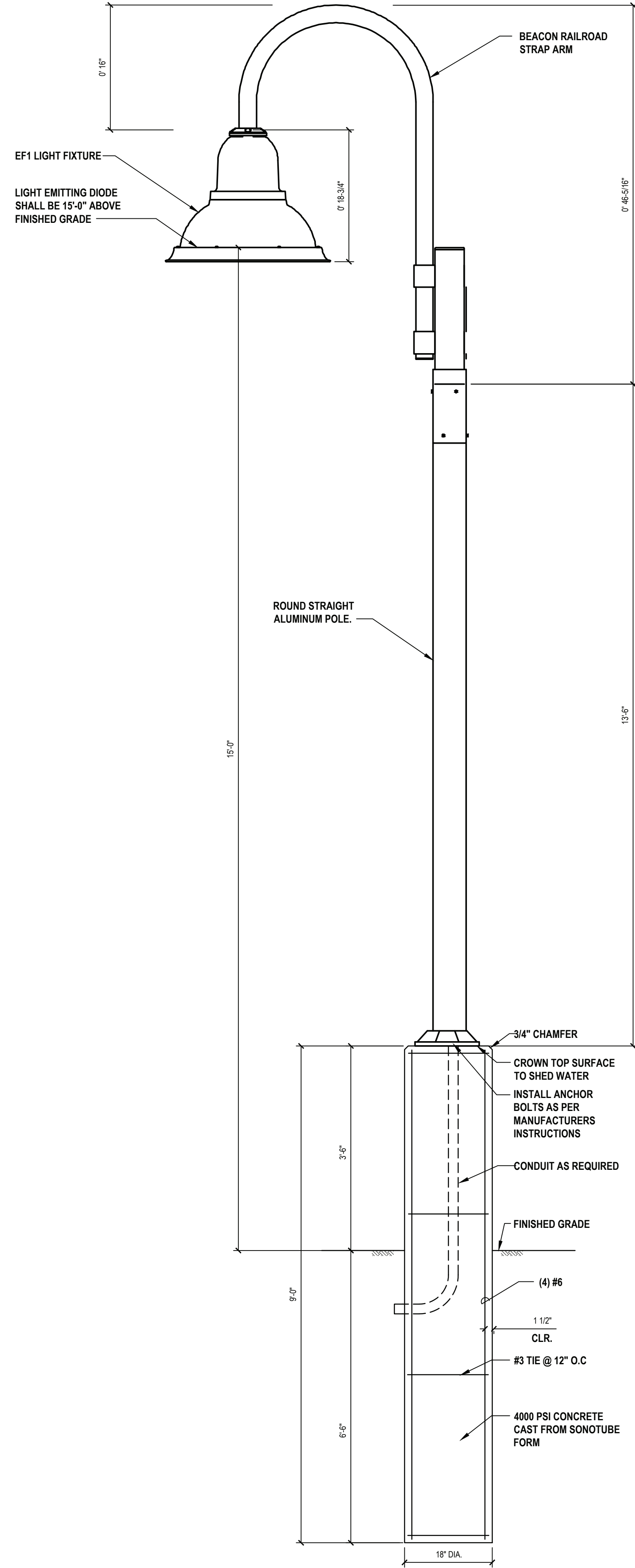
NOTE:

- MINIMIZE ALL TRENCH WIDTHS IN ORDER TO AVOID EXCESSIVE DISTURBANCE OF ADJACENT AREAS. TRENCH WALLS SHALL BE VERTICAL. USE SHEET PILING OR A SHEETING BOX TO MAINTAIN THE SPECIFIED TRENCH.



5 Typical Detail of Light Fixture with Occupancy Control Sensor

SCALE: NTS



6 Light Pole Base Detail

SCALE: NTS

CONSULTANTS:

MARK	DATE	DESCRIPTION



DESIGNED BY: SMP	DRAWN BY: SMP	CHECKED BY: AWK	REVIEWED BY: AWK
PROJECT NO: VGFD2001	DATE: JULY 2022	SCALE: AS SHOWN	

CLIENT  
**VAILS GATE FIRE DISTRICT**

New Storage Building (Phase I)  
New Fire Station (Phase II)




872 Blooming Grove Turnpike  
New Windsor, NY 12553

CONTRACT  
**CONTRACT G  
GENERAL CONSTRUCTION**

STATUS  
**FINAL BID DOCUMENT**

SHEET TITLE  
**STORAGE BUILDING  
ELECTRICAL DETAILS  
PHASE 1**

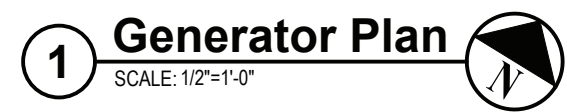
DRAWING No.  
**E1 501.00**

			
"ALTERATION OF THIS DOCUMENT EXCEPT BY A LICENSED PROFESSIONAL IS ILLEGAL"			
DESIGNED BY SMP	DRAWN BY SMP	CHECKED BY AWK	REVIEWED BY AWK
PROJECT No. VGFD2001	DATE JULY 2022	SCALE AS SHOWN	

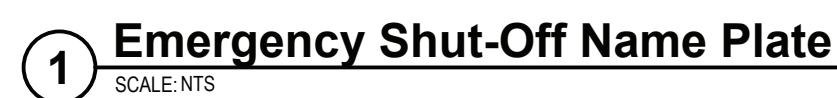
**New Storage Building (Phase I)**  
**New Fire Station (Phase II)**



**E1 502.00**







**NOTES:**

1. PAD DIMENSION BASED ON SPECIFIED EQUIPMENT. 1'-0" MIN ALL AROUND





CONSULTANTS:

MARK	DATE	DESCRIPTION



DESIGNED BY: SMP	DRAWN BY: SMP	CHECKED BY: AWK	REVIEWED BY: AWK
PROJECT NO: VGFD2001	DATE: JULY 2022	SCALE: AS SHOWN	

CLIENT

## AILS GATE FIRE DISTRICT

New Storage Building (Phase I)  
New Fire Station (Phase II)



872 Blooming Grove Turnpike  
New Windsor, NY 12553

CONTRACT
<b>CONTRACT G</b>
<b>GENERAL CONSTRUCTION</b>

STATUS
<b>FINAL BID DOCUMENT</b>

SHEET TITLE
<b>STORAGE BUILDING ELECTRICAL SINGLE LINE DIAGRAM PHASE 1</b>

DRAWING No.
<b>E1 600.00</b>

### EXTERIOR LIGHTING FIXTURE SCHEDULE

DESIGNATION	SYMBOL	MANUFACTURER	MODEL NUMBER	TYPE	WATTS	COLOR TEMPERATURE	VOLTAGE	LUMENS	MOUNTING	REMARKS	MOUNTING HEIGHT
○	EF1	BEACON	URB-CAP-21-24L-55-4K7-UNV-4-BC	LED	27	4000K	UNV	-	POLE	PARKING LOT POLE LIGHTING POLE MODEL NUMBER: RSA-B-SHO-S-15-40-A/B/C-CAP-2L-B3-DBT-VM2	15'-0" AFF
○	EF2	PRESCOLITE	LTR-4RD-H-HL40L-DM1_LTR-4RD-T-HL40K8WDS	LED	42.9	4000K	UNV	-	IN CANOPY	EMERGENCY BATTERY BACKUP WITH 90 MINUTES OF BACKUP CAPACITY	RECESSED IN CANOPY
▣	EF3	HUBBELL	QSP2-24L-30-4K7-4	LED	30	3000K	UNV	-	WALL MOUNT SURFACE	EMERGENCY BATTERY BACKUP WITH 90 MINUTES OF BACKUP CAPACITY	6" ABOVE DOOR

### INTERIOR LIGHTING FIXTURE SCHEDULE

DESIGNATION	SYMBOL	MANUFACTURER	MODEL NUMBER	TYPE	WATTS	COLOR TEMPERATURE	VOLTAGE	LUMENS	MOUNTING	REMARKS	MOUNTING HEIGHT
▣	F1	COLUMBIA	LXEM-4-40-HL-RFA-EDU-ELL14+XEH	LED	47	4000K	UNV	-	CEILING MOUNTED CHAIN HUNG	EMERGENCY BATTERY BACKUP WITH 90 MINUTES OF BACKUP CAPACITY	17'-0" AFF
▣	F2	COLUMBIA	LXEM-4-40-HL-RFA-EDU+XEH	LED	47	4000K	UNV	-	CEILING MOUNTED CHAIN HUNG		17'-0" AFF
⊗	EX	COMPASS LIGHTING	CEWSRE	LED	2.7	3000K	UNV	-	WALL MOUNT SURFACE	EMERGENCY BATTERY BACKUP WITH 90 MINUTES OF BACKUP CAPACITY (NOTE EL2)	6" ABOVE DOOR

#### LIGHT FIXTURE SCHEDULE NOTES:

- EL1. CONTRACTOR SHALL PROVIDE, INSTALL, LOCATE AND MOUNT OCCUPANCY SENSOR AS PER MANUFACTURER'S RECOMMENDATIONS. CONTRACTOR SHALL NOT MOUNT OCCUPANCY SENSOR DIRECTLY TO SLOPED CEILING. CONTRACTOR SHALL PROVIDE AND INSTALL MOUNTING HARDWARE TO ENSURE OCCUPANCY SENSOR LENS FACE IS ORIENTATED DOWNWARD, FACING THE FINISHED FLOOR.
- EL2. CONTRACTOR SHALL COVER LEFT AND RIGHT ILLUMINATED DIRECTIONAL ARROWS AS PER MANUFACTURER'S RECOMMENDATIONS.

#### SPARE EQUIPMENT:

- SE1. IN ADDITION TO THE EQUIPMENT SHOWN ON THE DRAWINGS, THE CONTRACTOR SHALL INCLUDE THE COST FOR PROVIDING THE FOLLOWING SPARE EQUIPMENT TYPES IN THE BASE BID. CONTRACTOR SHALL INCLUDE IN BASE BID THE COST TO DELIVER THE FOLLOWING EQUIPMENT TO A STORAGE LOCATION DESIGNATED BY THE OWNER. REFER TO THE LIGHT FIXTURE SCHEDULE ABOVE FOR ADDITIONAL INFORMATION.

### LIGHTING CONTROLS SCHEDULE

TYPE	MANUFACTURER	MODEL NUMBER	VOLTAGE	MOUNTING	MOUNTING HEIGHT	REMARKS
S <sub>VS</sub>	HUBBELL	LHDMIRS3-N-WH-M	120V	WALL MOUNTED	48" AFF	VS DENOTES VACANCY SENSOR
☑ <sup>PIR</sup>	HUBBELL	UVPP	-	AFC	CEILING	POWER PACK
☑ <sup>PC</sup>	INTERMATIC	K4221C	120V			PHOTOCELL
☉ <sup>SW</sup>	HUBBELL	SENSOR: WSP-SM-24V-WH + LENS: WSP-L360-WH	-	CEILING MOUNTED SURFACE	CEILING	NOTE EL1

CONTRACTOR SHALL COORDINATE ALL DEVICE COLORS AND FACEPLATES WITH ARCHITECT/OWNER IN FIELD.

\* PIR = PASSIVE INFRARED

#### NOTES:

- CONTRACTOR SHALL PROVIDE ALL MATERIALS AND ACCESSORIES AS REQUIRED TO PROVIDE FULL FUNCTIONING LIGHTING CONTROL SYSTEM TO FUNCTION AS SHOWN IN THE CONSTRUCTION DOCUMENTS. ALL SUBSTITUTE CONTROLS WILL REQUIRE SUBMISSION OF NEW CONTROL LAYOUT, STAMPED BY A PROFESSIONAL ENGINEER. SUBSTITUTE CONTROLS SHALL FUNCTION AS DESIGNED ON THE CONTRACT DOCUMENTS AND CONTRACTOR SHALL GUARANTEE FUNCTIONALITY.
- CONTRACTOR SHALL REFER TO CONTRACT DRAWINGS FOR SPECIFIC OUTPUT CONTROLS, AND DIMMING REQUIRED FOR ROOM CONTROLLER.
- ALL SWITCHES AND SWITCH BANKS TYPES SHALL BE COORDINATED WITH THE ENGINEER/DISTRICT IN FIELD.

#### Panel Wiring Schedule (3-Phase)

Panelboard	PA (SECTION 2)	Voltage	120/208	Phase	3	Wire	4	AIC Rating	65,000
Manufacturer	SIEMENS	Mains	MLO	Mains Rating	400A				
Panel Type	P2	Mounting	SURFACE	Options	-	Note	LOCATED IN UTILITY CLOSET		
NEMA Type Enclosure	1								

LOAD DESCRIPTION	BREAKER OPTION	TRIP AMPS AND POLES	CONNECTED LOAD					A	B	C	CONNECTED LOAD					TRIP AMPS AND POLES	BREAKER OPTION	LOAD DESCRIPTION
			VOLT AMPERES			A	B				C	VOLT AMPERES						
			0A	0B	0C							0A	0B	0C				
WMH-1	HACR	20A/1P	1500			43			44	1373				20A/2P	HACR	GXF-1		
WMH-1	HACR	20A/1P		1500		45			46		1313							
WMH-1	HACR	20A/1P			1500	47			48			985		15A/2P	HACR	ACCU-1/AC-1		
WMH-1	HACR	20A/1P	1500			49			50	885			3723					
WMH-1	HACR	20A/1P		1500		51			52		3723							
AIR COMPRESSOR	HACR	20A/1P			1500	53			54			3723		50A/3P	HACR	VXF-1		
			1500			55			56	3723								
FUEL STORAGE PUMP	HACR	20A/2P		1844		57			58		900			20A/1P	GFCL	EXTERIOR RECEPTACLES		
					1844	59			60		540			20A/1P	GFCL	WORK BENCH RECEPTACLES		
WH-1	HACR	20A/2P	1487			61			62	124				20A/1P		SITE LIGHTING		
				1487		63			64		500			20A/1P		TIME CLOCK / PHOTOCCELL		
HOT BOX	HACR	20A/1P			90	65			66					20A/1P		SPARE		
GENERAL RECEPTACLES	HACR	20A/1P	720			67			68					20A/1P		SPARE		
GENERAL RECEPTACLES	HACR	20A/1P		720		69			70					20A/1P		SPARE		
GENERAL RECEPTACLES	HACR	20A/1P			720	71			72					20A/1P		SPARE		
ELCP	HACR	20A/1P	200			73			74					20A/1P		SPARE		
EXTERIOR LTG	HACR	20A/1P		54		75			76					20A/1P		SPARE		
SPARE						77			78					20A/1P		SPARE		
SPARE						79			80					20A/1P		SPARE		
SPARE						81			82					20A/1P		SPARE		
SPARE						83			84					20A/1P		SPARE		

Connected Totals:

0A

26.5

KVA

0B

29.3

KVA

0C

26.5

KVA

Total

82.3

KVA

228.5

Amperes

Breaker Options:

ACFI - Arc Fault Circuit Interrupter

AS - Powerlink AS Breaker

AUX - Auxiliary Contacts

GFCL - Ground Fault Circuit Interrupter

HACR - Heating, AC & Refrigeration

LO - Handle lock-off device

PA - Handle Padlock Attachment

SF - Subfeed

ST - Shunt Trip Type

TC - Time Clock Control