

FIRE ALARM LEGEND

LIST OF DRAWINGS

1. ALL WIRING TO BE INSTALLED ACCORDING TO THE LATEST REVISION OF THE NATIONAL ELECTRIC CODE OR AS DICTATED BY CONTRACT SPECIFICATIONS, AND THE LATEST EDITION OF N.F.P.A 72 OR AS REQUIRED BY LOCAL ORDINANCE.
2. ALL CONDUCTORS MUST BE TEST FREE OF OPENS, SHORTS AND GROUNDS.
3. GROUNDING MUST COMPLY WITH THE NATIONAL ELECTRIC CODE. GROUNDING MUST BE NO. 12 A.W.G.
4. ALL PANEL TERMINATIONS TO BE SUPERVISED BY A FACTORY AUTHORIZED TECHNICIAN PRIOR TO POWERING EQUIPMENT.
5. FOR COMPONENT WIRING AND INSTALLATION INFORMATION REFER TO MANUFACTURERS REQUIREMENTS.
6. REFER TO CONTRACT DRAWINGS FOR APPROXIMATE DEVICE LOCATIONS. DRAWINGS REPRESENT DEVICE QUANTITIES. SHOP DRAWINGS SHALL BE SUBMITTED SHOWING SCALED LOCATIONS. CONTRACTOR TO SUBMIT PLANS STAMPED BY LICENSED NEW YORK PROFESSIONAL ENGINEER ONLY. SHOP DRAWINGS WITHOUT P.E STAMP WILL BE AUTOMATICALLY REJECTED.
7. INSTALL DETECTORS A MINIMUM OF 3'-0" FROM ANY SUPPLY OR RETURN AIR REGISTERS. COORDINATE EXACT LOCATIONS OF SUPPLY/RETURNS REGISTERS WITH MECHANICAL CONTRACTOR
8. WHEN INSTALLING SHIELDED CABLE THE FOLLOWING MUST BE OBSERVED:
 - A. METALLIC CONTINUITY MUST BE MAINTAINED THROUGHOUT THE CABLE RUN.
 - B. THE CABLE SHIELD MUST BE ISOLATED FROM GROUND AND TERMINATED ONLY IN THE ASSOCIATED CONTROL PANEL AT THE TERMINAL INDICATED ON THE CONTROL PANEL DRAWINGS. THE REMOTE END OF THE SHIELD (AT LAST DEVICE) MUST BE TAPED AND ISOLATED FROM GROUND.
9. ALL STROBE APPLIANCES SHALL BE SYNCHRONIZED. ALL ALARM INDICATING APPLIANCES SHALL SOUND A TEMPORAL 3 CODE PATTERN, UNLESS SYSTEM IS MODE ACTIVATED.
10. AFTER ALARM INDICATION, ALL FANS SHALL BE MANUALLY RESET INDEPENDENT FROM F.A.C.P. SYSTEM RESET. PROVIDE ALL REQUIRED HARDWARE ACCESSORIES, MOTOR STARTERS, CONTROLS, POWER AND CONTROL WIRING AND CONDUITS TO PROVIDE INDEPENDENT RESET OF ALL FANS AFTER ALARM INDICATION.

1. INSTALL ALL DEVICES IN ACCORDANCE WITH A.D.A. REQUIREMENTS. ALL DEVICES SHALL BE MOUNTED AS FOLLOWS:
 - A. MANUAL PULL STATIONS 48" O.C.
 - B. ALARM INDICATING APPLIANCE 80" A.F.F.
 - C. VERIFY WITH CONTRACT SPECIFICATIONS FOR ANY DEVIATIONS.
12. STROBES SHALL BE WIRED TO REMAIN ACTIVE AFTER SILENCE FUNCTION IS PERFORMED.
13. PROVIDE AND INSTALL ALL NECESSARY CONTROL MODULES, SYNCHRONIZATION MODULES AND MONITOR MODULES AS REQUIRED BY MANUFACTURER.
14. COORDINATE INSTALLATION OF WATER FLOW AND TAMPER SWITCHES WITH SPRINKLER CONTRACTOR.
15. CONTRACTOR TO INSTALL NECESSARY & REQUIRED POWER SUPPLY UNITS TO ENSURE PROPER OPERATION AT ALL MAGNETIC DOOR HOLDERS AS SHOWN ON DRAWINGS.
16. PROVIDE AND INSTALL ALL REQUIRED RELAYS TO RELEASE ELECTRIC DOOR LATCHES.
17. COORDINATE EXACT LOCATION OF REMOTE ANNUNCIATOR AND F.A.C.P. WITH LOCAL FIRE MARSHALL AND OWNER.
18. PROVIDE ALL REQUIRED DUCT SMOKE DETECTORS. CONTRACTOR TO INSTALL DUCT SMOKE DETECTORS. CONTRACTOR TO INTERFACE ALL DUCT DETECTORS WITH FACP.
19. CONTRACTOR TO INSTALL NECESSARY COMPONENTS FOR ELEVATOR RECALL AS PER LOCAL FIRE MARSHALL. EACH LOBBY, MACHINE ROOM AND PIT TO HAVE SMOKE DETECTION. WHERE APPLICABLE CONTRACTOR TO COORDINATE AND INSTALL NECESSARY COMPONENTS TO INTERFACE FIRE ALARM SYSTEM, ELEVATOR, AND SPRINKLER HEAD SOLENOID VALVES LOCATED IN THE ELEVATOR SHAFT.
20. CONTRACTOR SHALL PROVIDE TWO TELEPHONE LINES AND TELEPHONE JACKS. PROVIDE ALL REQUIRED WIRING/CONDUIT TO LOCATE NEW TELEPHONE JACKS ADJACENT TO FACP.
21. FIRE ALARM RISER DIAGRAM IS SCHEMATIC. REFER TO FLOOR PLANS FOR DEVICE TYPES AND QUANTITIES.
22. ALL HVAC EQUIPMENT WITH A CFM RATING OF 1000 CFM OR GREATER SHALL BE INTERCONNECTED TO THE FIRE ALARM SYSTEM AND SHUT DOWN UPON FIRE ALARM SYSTEM ALARM ACTIVATION. CONTRACTOR SHALL ALSO PROVIDE AND INSTALL NEW RETURN DUCT SMOKE DETECTORS WITH REMOTE LED'S FOR ALL HVAC UNITS WITH A CFM RATING OF 2000 CFM OR GREATER.
23. IN ADDITION TO DEVICES SHOWN ON THE DRAWINGS CONTRACTOR TO PROVIDE FIVE SMOKE DETECTORS, FIVE HEAT DETECTORS, FIVE PULL STATIONS, FIVE HORN STROBES, FIVE STROBES AND FIVE CARBON MONOXIDE DETECTORS. EACH DEVICE SHALL BE INCLUDED WITH 100' OF WIRING AND/OR CONDUIT.
24. PROTECTIVE SHIELDS SHALL BE PROVIDED FOR ALL PULL STATIONS. SHIELDS SHALL FIT OVER MANUAL PULL STATIONS AND SHALL INCLUDE A BATTERY OPERATED PIERCING HORN WHEN THE SHIELD IS REMOVED.
25. PLENUM WIRING TO BE USED IN ALL AREAS ABOVE DROP CEILINGS. CONDUIT MUST BE USED IN ALL MECHANICAL AND ELECTRICAL ROOMS. CONDUIT MUST ALSO BE USED IN ALL AREAS WITH OPEN CEILINGS.
26. ALL EQUIPMENT TO BE RECESSED MOUNTED AND ALL WIRING AND CONDUIT TO BE RUN CONCEALED
27. HEAT DETECTOR MOUNTED IN THE ELEVATOR SHAFT MUST BE WITHIN 2' OF THE SPRINKLER HEAD.
28. ON WATER FLOW, AND IF THE F.A.C.P WAS NOT IN ALARM, THE PRESSURE SWITCH WILL PUT THE SYSTEM IN ALARM TURNING ON AV'S, STAGE 2 BELL AND SEND SIGNALS TO CENTRAL STATION AND SHUT DOWN FANS.
29. TS (TAMPER SWITCH), CH (AIR COMPRESSOR HIGH PRESSURE), CL (AIR COMPRESSOR LOW PRESSURE), SHALL CAUSE A SUPERVISORY TROUBLE AT THE F.A.C.P AND SEND A SIGNAL TO CENTRAL STATION IF SYSTEM IS MONITORED.

architects
+
engineers

**538 Broad Hollow Road, 4th Floor East
Melville, NY 11747
631.756.8000 • www.h2m.com**

CONSULTANTS:

[illegible]

DESIGNED BY: SMP/CMP	DRAWN BY: SMP/CMP	CHECKED BY: AWK	REVIEWED BY: AWK
PROJECT No.: VGFD2001	DATE: JULY 2022	SCALE: AS SHOWN	

CLIENT

New Storage Building (Phase I)
New Fire Station (Phase II)



CONTRACT

CONTRACT G
GENERAL CONSTRUCTION

STATUS

FINAL BID DOCUMENT

SHEET TITLE

FIRE ALARM LEGENDS AND RISER DIAGRAM PHASE 2

DRAWING No.

FA2 001.00



2 Typical Fire Alarm Device Location

CONTROL UNIT ANNUNCIATION	NOTIFICATION	SUPPLEMENTARY
------------------------------	--------------	---------------

3 Fire Alarm Sequence of Operation



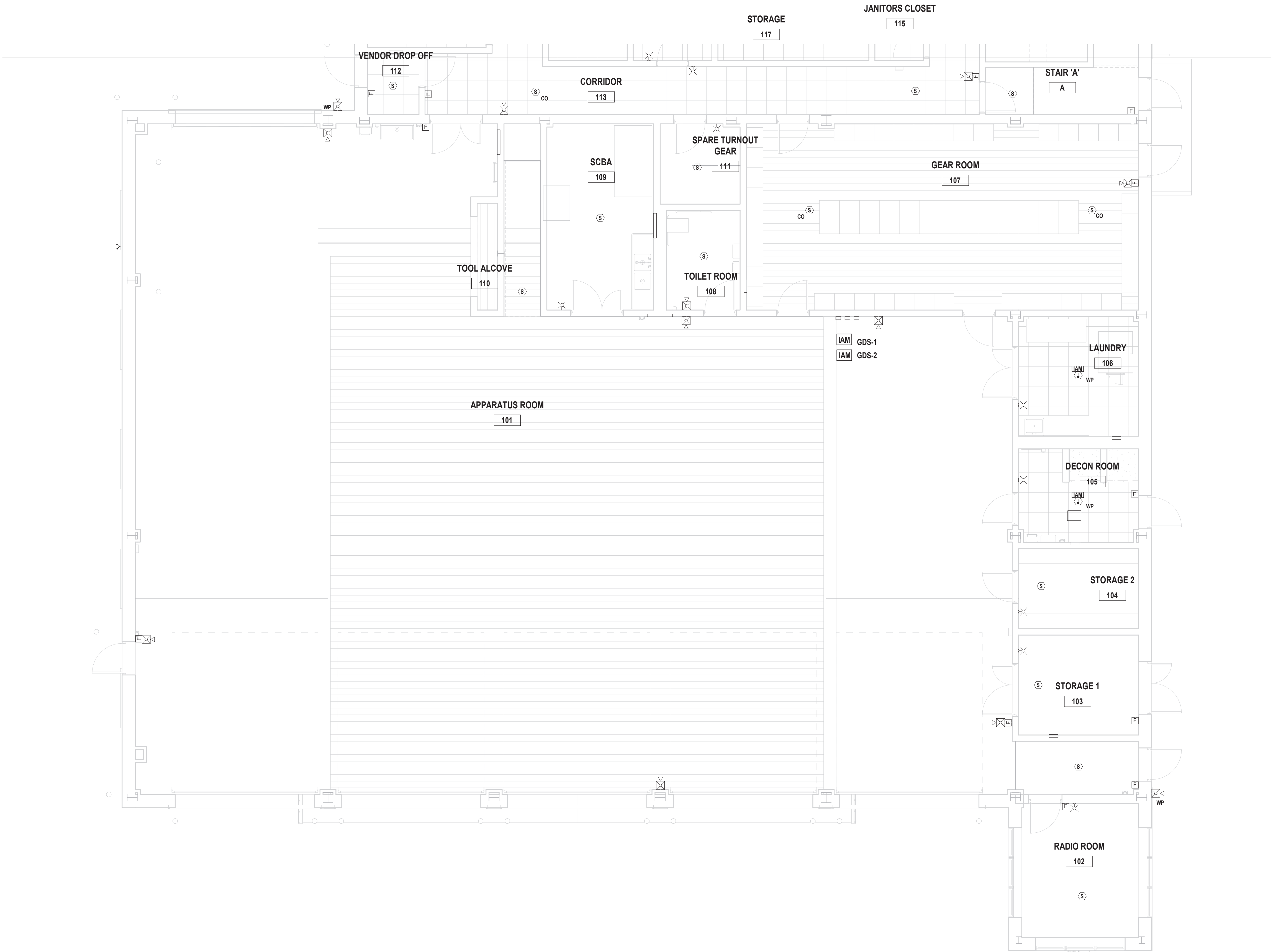
WIRE LEGEND

* PROVIDE ALL 120 VOLT CIRCUITS IN CONDUIT.

MECHANICAL EQUIPMENT AIRFLOW CHART (NOTE 22)

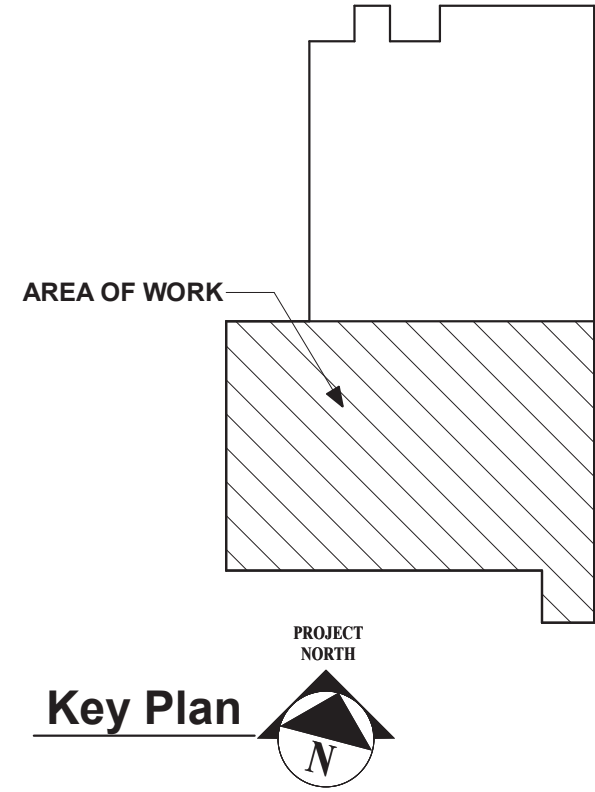
EQUIPMENT NAME	AIRFLOW (CFM)
----------------	---------------

C:\Users\jgsh\Documents\VGFD2001-Central2-E_jgsh.rvt 7/15/2022 3:37:01 PM

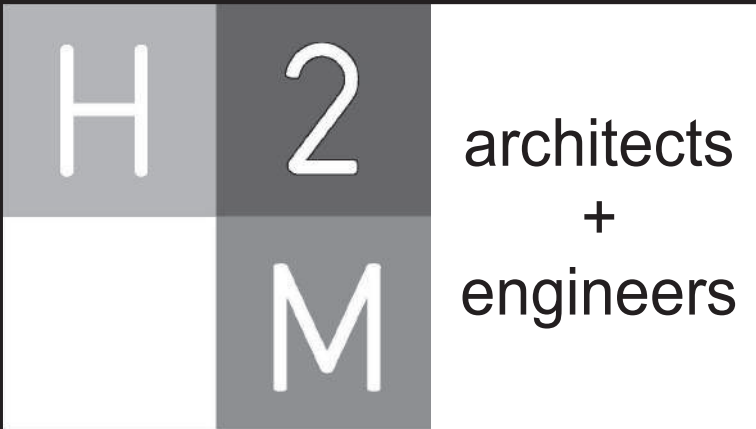


1 Partial First Floor Fire Alarm Plan

SCALE: 3/16" = 1'-0"




Key Plan



538 Broad Hollow Road, 4th Floor East
Melville, NY 11747
631.756.8000 • www.h2m.com

CONSULTANTS:		

MARK	DATE	DESCRIPTION




STATE OF NEW YORK
VAILS GATE FIRE DISTRICT
PROFESSIONAL ENGINEER
LICENSE NO. 2583

DESIGNED BY: SMP/CMP	DRAWN BY: SMP/CMP	CHECKED BY:	REVIEWED BY:
PROJECT No: VGFD2001	DATE: JULY 2022	SCALE: AS SHOWN	

CLIENT

VAILS GATE FIRE DISTRICT

New Storage Building (Phase I)
New Fire Station (Phase II)



872 Blooming Grove Turnpike
New Windsor, NY 12553

CONTRACT

**CONTRACT G
GENERAL CONSTRUCTION**

STATUS

REGULATORY REVIEW

SHEET TITLE

**PARTIAL FIRST FLOOR FIRE ALARM
PLAN
NEW FIRE STATION
PHASE 2**

DRAWING No.

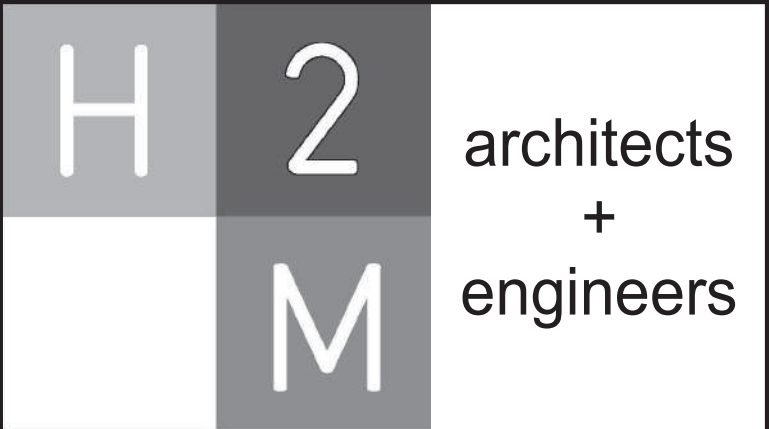
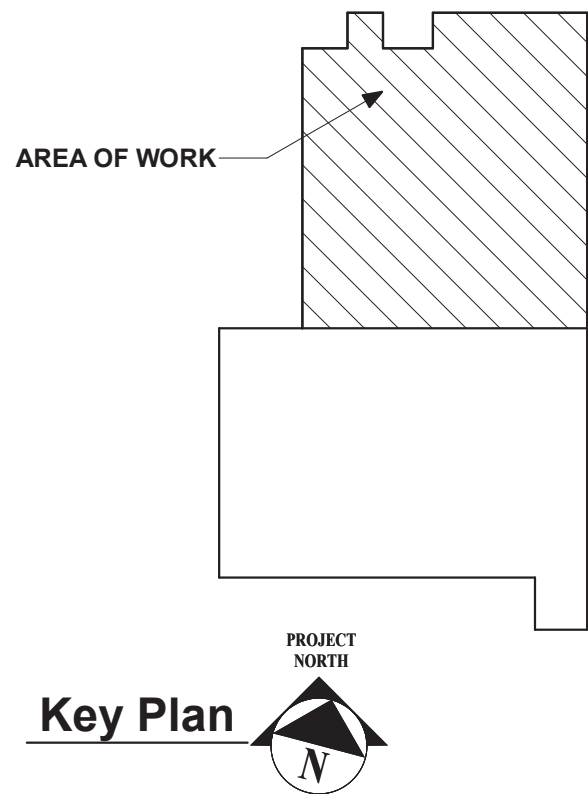
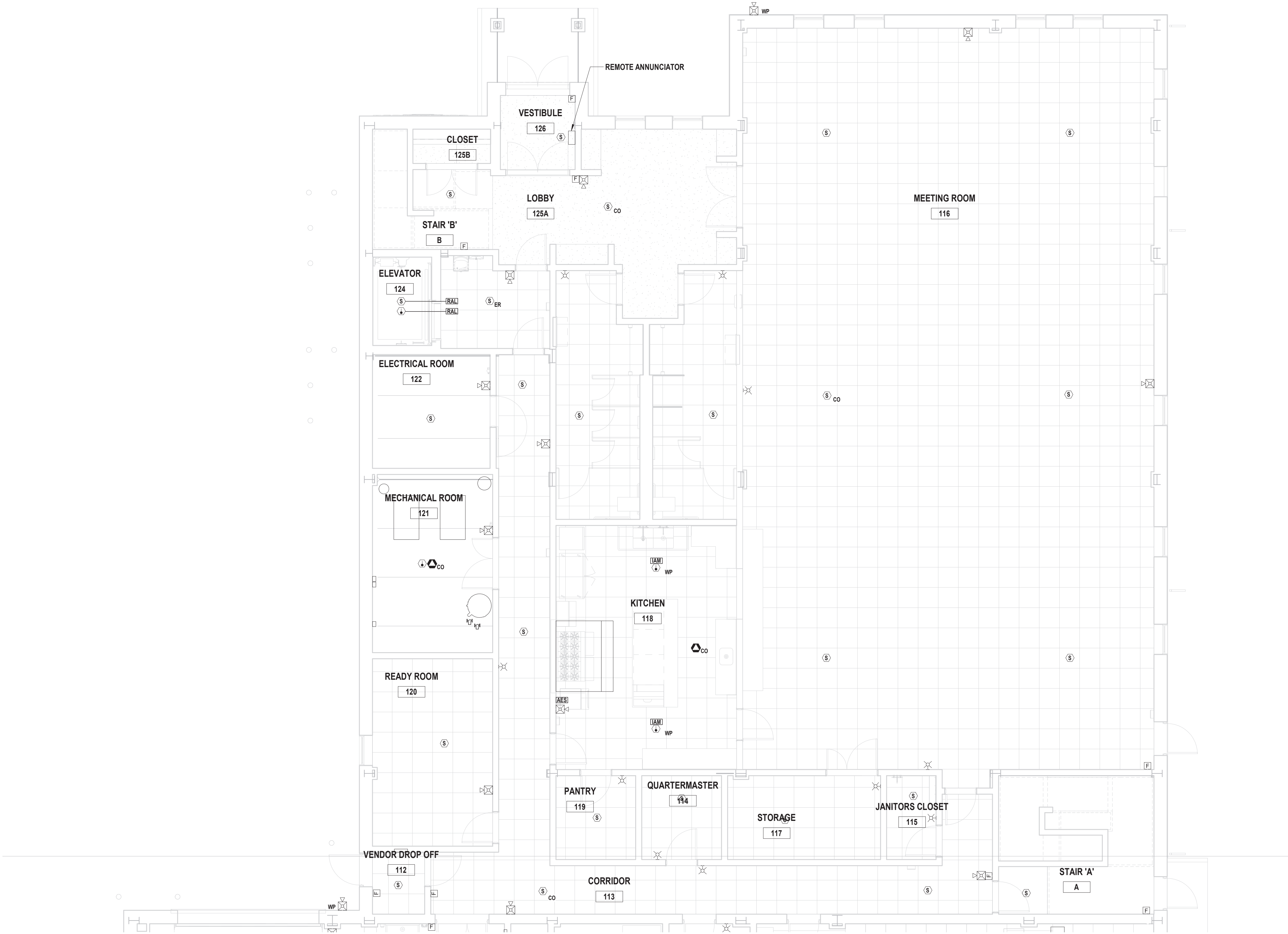
FA2 101A.00

C:\Users\joshi\Documents\VGFD2001-Central2-E_1joshi.rvt

7/15/2022 3:37:03 PM

1 Partial First Floor Fire Alarm Plan

SCALE: 3/16" = 1'-0"



538 Broad Hollow Road, 4th Floor East
Melville, NY 11747
631.756.8000 • www.h2m.com

CONSULTANTS:

MARK	DATE	DESCRIPTION



DESIGNED BY: SMP/CMP	DRAWN BY: SMP/CMP	CHECKED BY:	REVIEWED BY:
PROJECT No: VGFD2001	DATE: JULY 2022	SCALE: AS SHOWN	

CLIENT

VAILS GATE FIRE DISTRICT

New Storage Building (Phase I)
New Fire Station (Phase II)

872 Blooming Grove Turnpike
New Windsor, NY 12553

CONTRACT

CONTRACT G
GENERAL CONSTRUCTION

STATUS

REGULATORY REVIEW

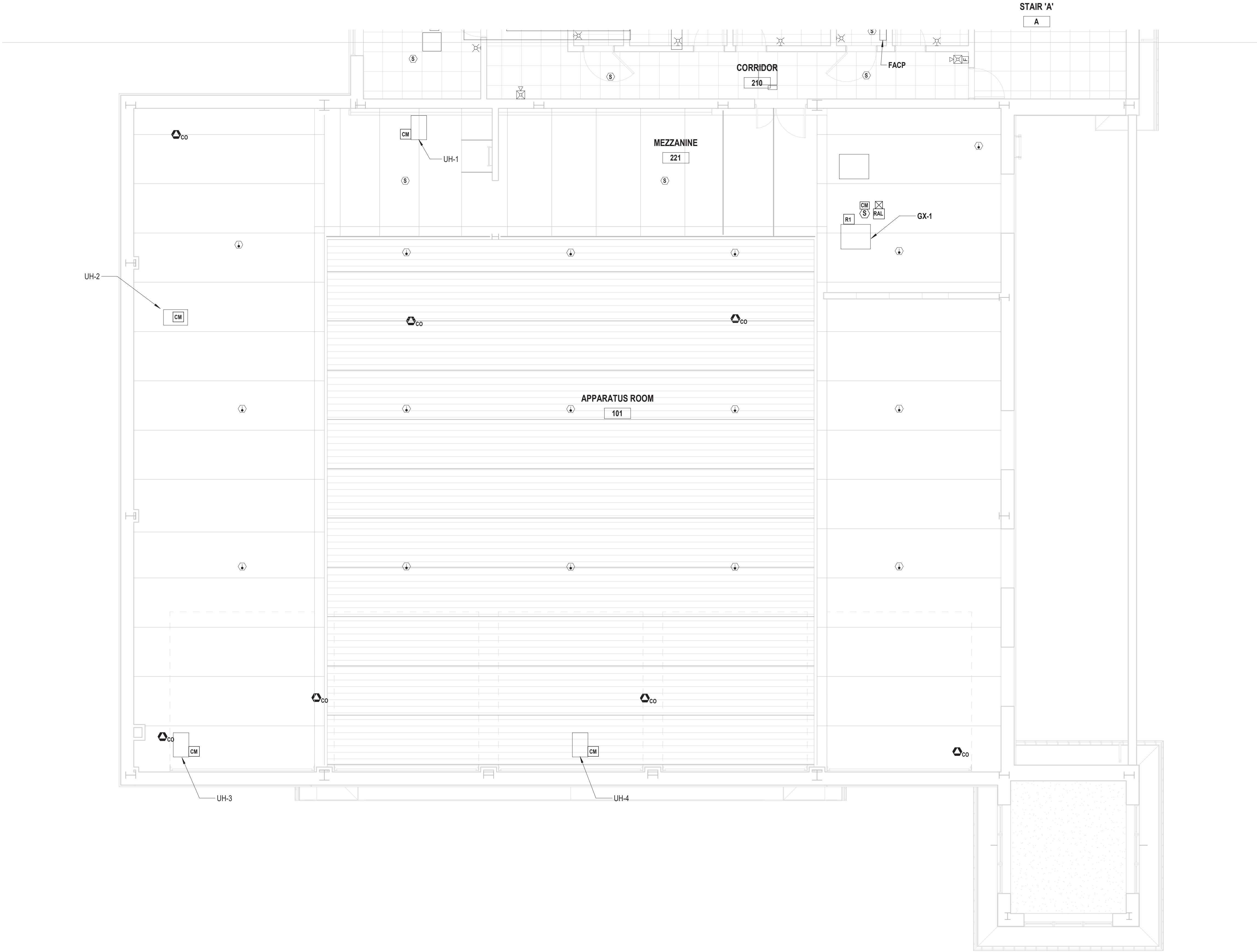
SHEET TITLE

PARTIAL FIRST FLOOR FIRE ALARM PLAN
NEW FIRE STATION PHASE 2

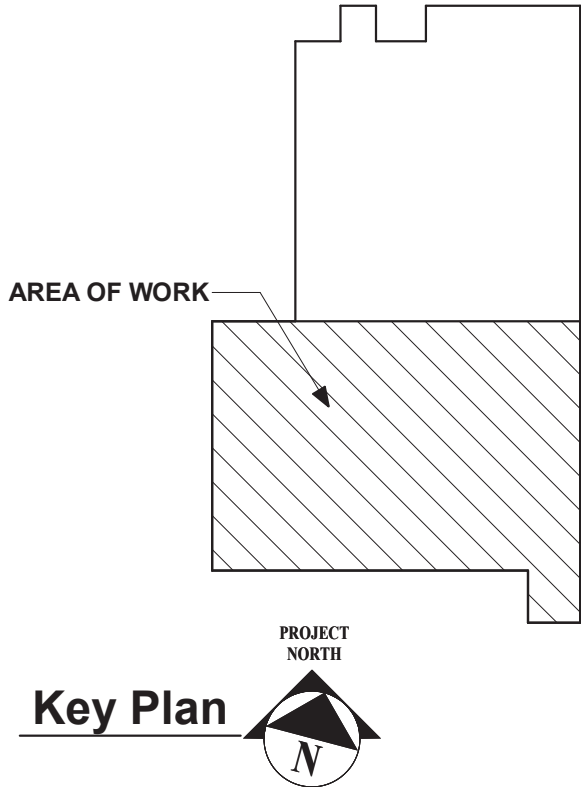
DRAWING No.

FA2 101B.00

C:\Users\joshi\Documents\VGFD2001-Central2-E_joshi.rvt 7/15/2022 3:37:03 PM



1 Partial Second / Mezzanine Floor Fire Alarm Plan
SCALE: 3/16" = 1'-0"



H2M architects + engineers

538 Broad Hollow Road, 4th Floor East
Melville, NY 11747
631.756.8000 • www.h2m.com

CONSULTANTS:		

MARK	DATE	DESCRIPTION

DESIGNED BY: SMP/CMP	DRAWN BY: SMP/CMP	CHECKED BY:	REVIEWED BY:
PROJECT No: VGFD2001	DATE: JULY 2022	SCALE: AS SHOWN	

CLIENT

VAILS GATE FIRE DISTRICT

New Storage Building (Phase I)
New Fire Station (Phase II)

872 Blooming Grove Turnpike
New Windsor, NY 12553

CONTRACT
**CONTRACT G
GENERAL CONSTRUCTION**

STATUS
REGULATORY REVIEW

SHEET TITLE
**PARTIAL SECOND / MEZZANINE
FLOOR FIRE ALARM PLAN
NEW FIRE STATION
PHASE 2**

DRAWING No.
FA2 102A.00

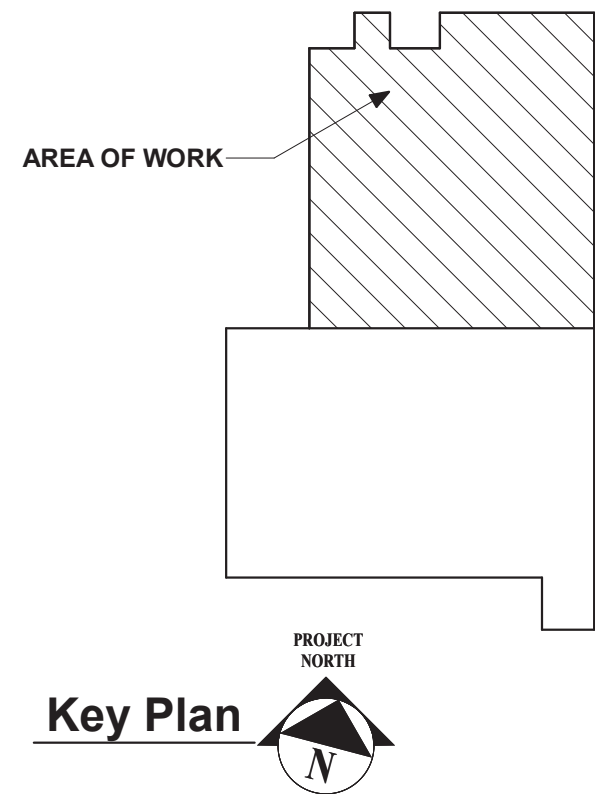
C:\Users\jgsh\Documents\VGFD2001-Central2-E_jgsh1.rvt

7/15/2022 3:37:06 PM

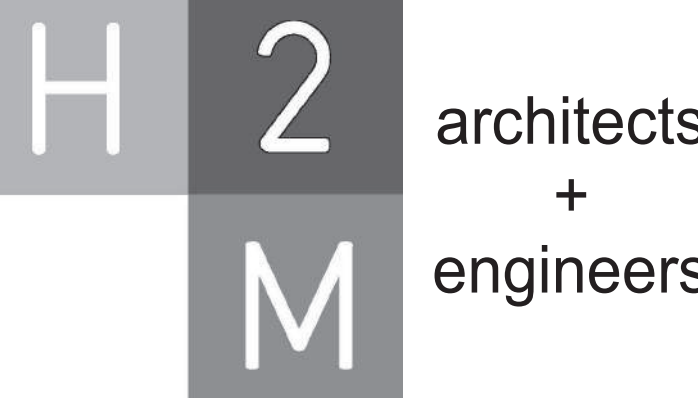


1 Partial Second Floor Fire Alarm Plan

SCALE: 3/16" = 1'-0"



Key Plan



538 Broad Hollow Road, 4th Floor East
Melville, NY 11747
631.756.8000 • www.h2m.com

CONSULTANTS:

MARK	DATE	DESCRIPTION



DESIGNED BY: SMP/CMP	DRAWN BY: SMP/CMP	CHECKED BY:	REVIEWED BY:
PROJECT No: VGFD2001	DATE: JULY 2022	SCALE: AS SHOWN	

CLIENT

VAILS GATE FIRE DISTRICT

New Storage Building (Phase I)
New Fire Station (Phase II)

872 Blooming Grove Turnpike
New Windsor, NY 12553

CONTRACT

**CONTRACT G
GENERAL CONSTRUCTION**

STATUS

REGULATORY REVIEW

SHEET TITLE

**PARTIAL SECOND FLOOR FIRE
ALARM PLAN
NEW FIRE STATION
PHASE 2**

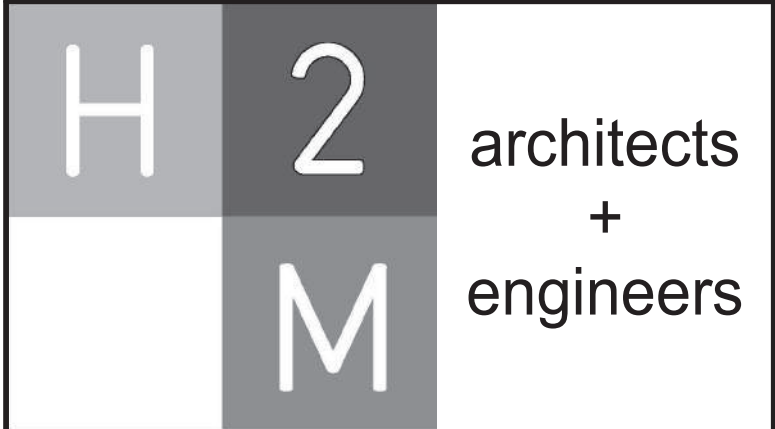
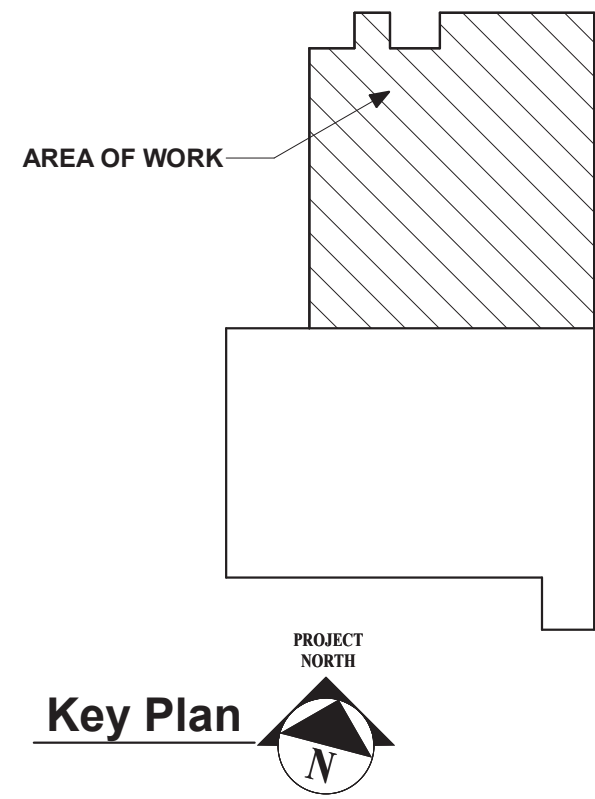
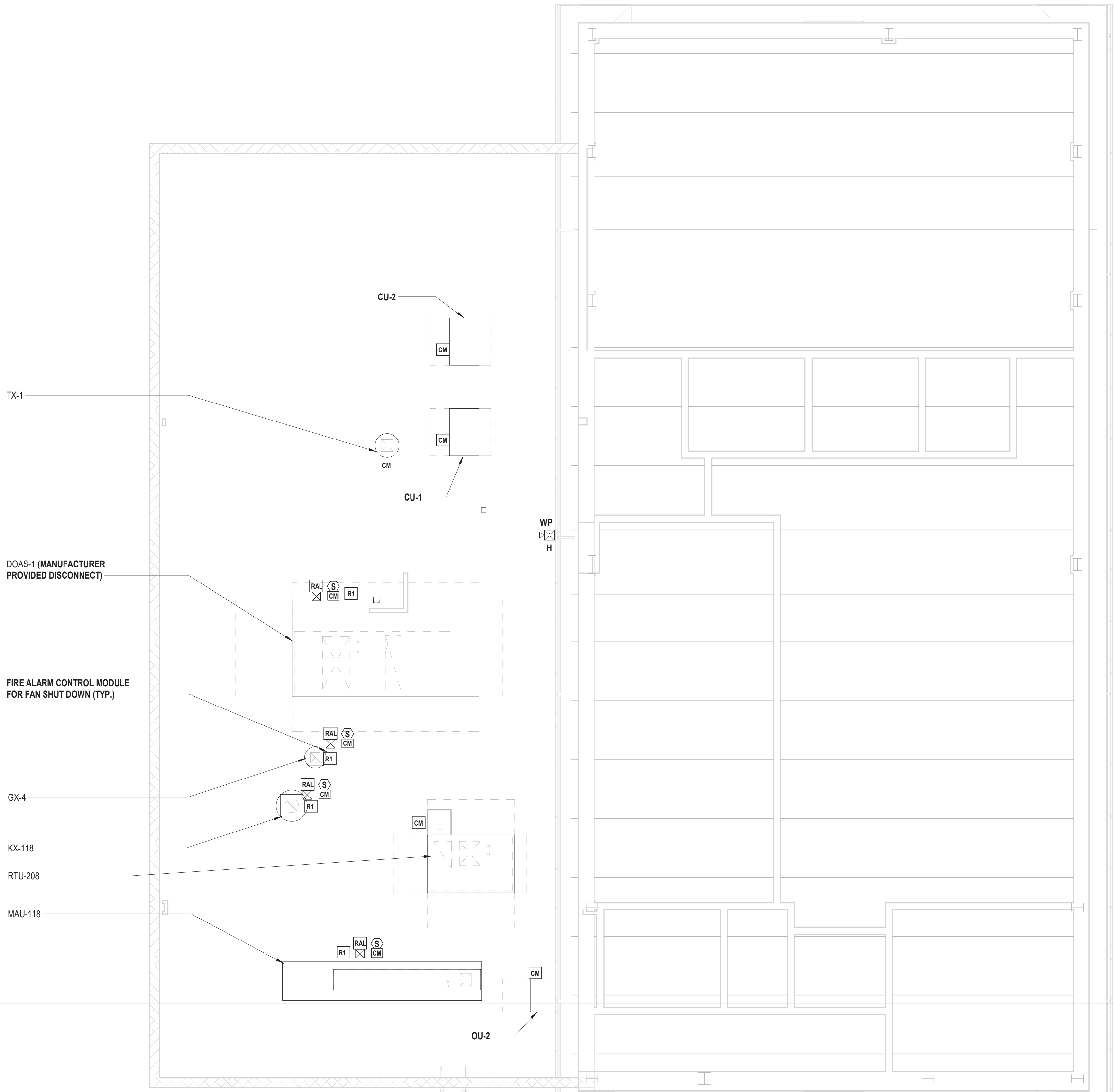
DRAWING No.

FA2 102B.00

C:\Users\jgsh\Documents\VGFD2001-Central-E_Jgsh1.rvt

7/15/2022 3:37:06 PM

1 Roof Fire Alarm Plan
SCALE: 3/16" = 1'-0"



538 Broad Hollow Road, 4th Floor East
Melville, NY 11747
631.756.8000 • www.h2m.com

CONSULTANTS:		

MARK	DATE	DESCRIPTION

ALTERATION OF THIS DOCUMENT EXCEPT BY A LICENSED PROFESSIONAL IS ILLEGAL.

DESIGNED BY: SMP/CMP	DRAWN BY: SMP/CMP	CHECKED BY:	REVIEWED BY:
PROJECT No: VGFD2001	DATE: JULY 2022	SCALE: AS SHOWN	

CLIENT

VAILS GATE FIRE DISTRICT

**New Storage Building (Phase I)
New Fire Station (Phase II)**

**872 Blooming Grove Turnpike
New Windsor, NY 12553**

CONTRACT

**CONTRACT G
GENERAL CONSTRUCTION**

STATUS

REGULATORY REVIEW

SHEET TITLE

**ROOF FIRE ALARM PLAN
NEW FIRE STATION
PHASE 2**

DRAWING No.

FA2 130.00