

SUBMITTAL REVIEW



CLIENT NAME: Vails Gate Fire Department
PROJECT TITLE: Vails Gate FD - New Firehouse
SUBMITTAL No.: 224000-3 **H2M PROJECT No.:** VGFD2001
SUBMITTAL NAME: Plumbing Fixtures Phase 2 Trench Drain PD

SUBMITTAL REVIEW	
REVIEW IS FOR GENERAL COMPLIANCE WITH CONTRACT DOCUMENTS. NO RESPONSIBILITY IS ASSUMED FOR CORRECTNESS OF DIMENSIONS OR DETAILS	
<input checked="" type="checkbox"/> NO EXCEPTIONS TAKEN	<input type="checkbox"/> SUBMIT SPECIFIED ITEM
<input type="checkbox"/> MAKE CORRECTIONS NOTED (RESUBMISSION NOT REQUIRED)	<input type="checkbox"/> NO ACTION TAKEN (REVIEW IS THE RESPONSIBILITY OF ANOTHER PARTY)
<input type="checkbox"/> REVISE & RESUBMIT	<input type="checkbox"/> NO ACTION TAKEN (THIS SUBMITTAL IS NOT REQUIRED BY THE CONTRACT)
<input type="checkbox"/> REJECTED - SEE REMARKS	<input type="checkbox"/> RECEIVED FOR RECORD
<p>Corrections or comments made on the shop drawings during this review do not relieve contractor from compliance with requirements of the drawings and specifications. This check is only for review of general conformance with the design concept of the project and general compliance with the information given in the contract documents. The contractor is responsible for: confirming and correlating all quantities and dimensions; selecting fabrication processes and techniques of construction; coordinating their work with that of all other trades; and performing the work in a safe and satisfactory manner.</p> <p>H2M architects + engineers</p> <p>Date: 04/26/2023 By: KJE</p> <p>Rev.: 2020-05-20</p>	

Comments:

--

SUBMITTAL COVER SHEET

(Attach to each copy of each submittal)

Clark Patterson Lee

50 Front Street, Suite 202
Newburgh, New York 12550
Phone: (800) 274 - 9000



Clark Patterson Lee
DESIGN PROFESSIONALS

Submittal No.

224000-3

Contractor: Key Construction Services, LLC
Address: 4246 Albany Post Rd / Suite #1
Hyde Park, NY 12538

Phone / Fax: (845) 454-1192 (845) 454-1193

Architect Project No: 14078.09
Contractor's Number: 23001
Project Name:
Poughkeepsie City School District
2020 Capital Improvement Project
Phase 1B: Building Improvements

TYPE OF SUBMITTAL

(Check one)

- | | | |
|--|--|--|
| <input checked="" type="checkbox"/> Product Data | <input type="checkbox"/> Color Samples | <input type="checkbox"/> O&M Manual |
| <input type="checkbox"/> Shop Drawings | <input type="checkbox"/> Product Samples | <input type="checkbox"/> Record Document |
| <input type="checkbox"/> Other | | |

SUBSTITUTION

See General Conditions

- ☐ YES ☒ NO

**DATE RECEIVED BY
ARCHITECT:** _____

**DATE RETURNED TO
CONTRACTOR:** _____

PRODUCT IDENTIFICATION

Specification Section No: 224000
Part/Paragraph: 1.04.B
Contract Dwg. Number: _____
Detail Reference: _____
Product: TRENCH DRAIN SYSTEM WITH HEAVY-DUTY FRAME ASSEMBLY
Manufacturer: Zurn

CONTRACTOR'S APPROVAL

This submittal has been reviewed and approved by the Contractor in accordance with the General Conditions.

By: MJB **Date: 04/17/23**

DEVIATION FROM CONTRACT DOCUMENTS:**CONTRACTOR COMMENTS:****FOR USE BY CPL****ARCHITECT/ENGINEER'S STAMP**

- | | |
|---|--|
| <input type="checkbox"/> No Exception Taken | <input type="checkbox"/> Revise & Resubmit |
| <input type="checkbox"/> Furnish as Corrected | <input type="checkbox"/> Rejected |

Corrections or comments made on the submittal during this review do not relieve the Contractor from compliance with the requirements of the Contract Documents. This review is only for the limited purpose of checking for conformance with information given and the design concept expressed in the Contract Documents. The Contractor is responsible for: confirming and correlating all quantities and dimensions; selecting fabrication processes and techniques of construction; coordinating his work with that of all other trades; and performing his work in a safe and satisfactory manner.

Clark Patterson Lee

Date: _____ By: _____

ARCHITECT/ENGINEER'S COMMENTS:

Joe Lombardo
Plumbing & Heating of Rockland, Inc.

321 Spook Rock Road
Suffern, NY 10901
Ph. 845-357-6537 Fx 845-357-8529
E: info@josephlombardo.com
Website: www.josephlombardo.com

Rockland Cty. Plumbing #1000 Rockland Cty. Cooling # 1468
Westchester Cty. Plumbing #460 New Jersey State Plumbing #12702

TO: Key Construction
4246 Albany Post Rd. Suite 1
Hyde Park, NY 12538

LETTER OF TRANSMITTAL

Form with fields: DATE: 4-17-23, JOB NO., ATTENTION: Joe Manfredi, RE: Vails Gate Firehouse

WE ARE SENDING YOU [] Attached [] Under separate cover via the following items:
[] Shop Drawings [] Prints [] Plans [] Samples [] Specifications
[] Copy of letter [] Change order []

Table with 4 columns: EMAIL, DATE, No., DESCRIPTION. Row 1: 1, 4-17-23, 224000, TRENCH DRAINS PHASE 2

THESE ARE TRANSMITTED as checked below:
[] For approval [] No Exceptions Taken [] Resubmit copies for review
[] For your use [] Make Corrections Noted [] Submit copies for distribution
[] As requested [] Rejected [] Return corrected prints
[] For review and comment []
[] FOR BIDS DUE 20 [] PRINTS RETURNED AFTER LOAN TO US

COPY TO: Joe Manfredi SIGNED: Ronald J. Lombardo



Z886-HD

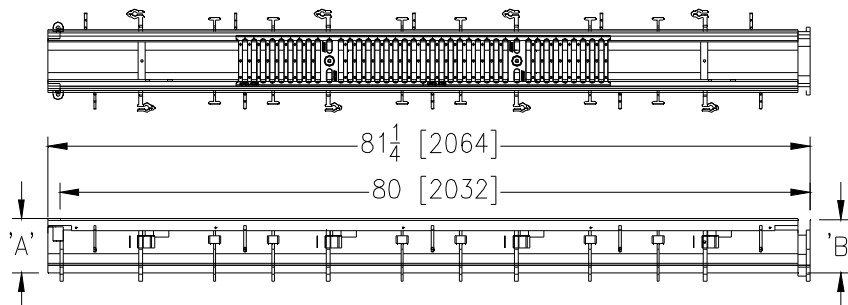
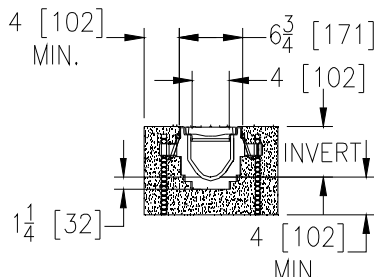
6-3/4 [171] WIDE REVEAL TRENCH DRAIN SYSTEM WITH HEAVY-DUTY FRAME ASSEMBLY

SPECIFICATION SHEET

TAG trench drains

Dimensional Data (inches and [mm]) are Subject to Manufacturing Tolerances and Change Without Notice

SPECIFYING ENGINEER IS RESPONSIBLE FOR
CONCRETE ENCASEMENT AND REINFORCING
BASED UPON APPLICATION AND LOCAL CODES



NOTE: + Actual Channel length is 81 1/4 [2064] to allow for overlap.

ENGINEERING SPECIFICATION: Zurn Z886-HD

Channels are 80" [2032 mm] long, 6-3/4" [171 mm] wide reveal and have a 4" [102 mm] throat. Modular channel sections are made of 0% water absorbent High Density Polyethylene (HDPE). Channels have a positive mechanical connection between channel sections that will not separate during the installation and mechanically lock into the concrete surround every 10" [254 mm]. Channels weigh less than 2.31 lbs. [1.05kg] per linear foot, have a smooth, 1-1/2" [38 mm] radiused self cleaning bottom with a Manning's coefficient of .009 and .75% or neutral 0% built in slope. Channels have rebar clips standard to secure trench in its final location. Channels provided with standard DGC grates that lock down to frame. Zurn 5.375" [137 mm] wide reveal Ductile Iron Slotted Grate conforming to ASTM specification A536-84, Grade 80-55-06. Ductile Iron grate is rated class C per the DIN EN1433 top load classifications. Supplied in 20" [508 mm] nominal lengths with 1/2" [13 mm] wide slots, and 3/4" [19 mm] bearing depth. Grate has an open area of 28.1 sq. in. per ft. [59,463 sq. mm per meter]. The .105" [2.67 mm] thick Heavy-Duty Carbon Steel Frame Assembly conforms to ASTM specification A36 with 10 - 4" [102 mm] long concrete anchors per 80" [2032 mm]. Grate lockdown bars are to be integral to the frame. Frame supplied with powder coated finish. All welds must be performed by a certified welder per ASTM standard AWS D1.1. Frames produced in the U.S.A.

PREFIX OPTIONS (Check/specify appropriate options)

☒ Z Six-foot, Eight-inch High Density Polyethylene (HDPE)*

SUFFIX OPTIONS (Check/specify appropriate options)

Outlet Adapters Add/Each

☒ -E1 Closed End Cap
☐ -E2 2 [51] No-Hub End Outlet
☐ -E3 3 [76] No-Hub End Outlet
☐ -E4 4 [102] No-Hub End Outlet
☐ -E6 6 [152] No-Hub End Outlet
☐ -U2 2 [51] No-Hub Bottom Outlet
☒ -U3 3 [76] No-Hub Bottom Outlet
☐ -U4 4 [102] No-Hub Bottom Outlet
☐ -U6 6 [152] No-Hub Bottom Outlet

Frame Options

☐ -CBF Black Acid Resistant Coated Top Frame
☐ -LD Light Duty Grates on Heavy Duty Frame
☐ -SW Sidewall Extension - 9 [229] High
☐ -SW2 Sidewall Extension - 18 [457] High

Grate Options (Load Classifications are per DIN EN1433)

☐ -BDC Black Acid Resistant Epoxy Coated Ductile Grate - Class C
☐ -BDE Black Acid Resistant Epoxy Coated Ductile Grate - Class E
☐ -BG Galvanized Ductile Iron Bar Grate - Class C
☐ -DBG Ductile Iron Cast Bar Grate - Class C
☐ -DC Ductile Iron Solid Cover - Class C
☐ -DGC Ductile Iron Slotted Grate - Class C *
☒ -DGE Ductile Iron Slotted Grate - Class E
☐ -GDC Galvanized Ductile Iron Slotted Grate - Class C
☐ -GDE Galvanized Ductile Iron Slotted Grate - Class E
☐ -GHPDE Galvanized Heel-Proof Ductile Grate - Class E
☐ -HPDE Heel-Proof Ductile Slotted Grate - Class E
☐ -RFGC Reinforced Slotted Galvanized Grate - Class C
☐ -RFSC Reinforced Slotted Stainless Steel Grate - Class C
☐ -RPGC Reinforced Perforated Galvanized Grate - Class C
☐ -RPGRC Reinforced Perforated Galvanized Reverse Punch Grate - Class C
☐ -RPSC Reinforced Perforated Stainless Steel Grate - Class C
☐ -RPSRC Reinforced Perforated Stainless Steel Reverse Punch Grate - Class C

Miscellaneous Options

☐ -JC Joint Connector
☐ -VP Vandal-Proof Lockdown

Trench No.	'A' Shallow Inv.	'B' Deep Inv.	Flow		
			(cfs)	(gpm)	(lps)
8601	3.50 [89]	4.10 [104]	0.21	93	6
8602	4.10 [104]	4.70 [119]	0.27	122	8
8603	4.70 [119]	5.30 [135]	0.34	152	10
8603N	5.30 [135]	5.30 [135]	-	-	-
8604	5.30 [135]	5.90 [150]	0.41	183	12
8605	5.90 [150]	6.50 [165]	0.48	214	13
8606	6.50 [165]	7.10 [180]	0.55	245	15
8606N	7.10 [180]	7.10 [180]	-	-	-
8607	7.10 [180]	7.70 [196]	0.62	276	17
8608	7.70 [196]	8.30 [211]	0.69	308	19
8609	8.30 [211]	8.90 [226]	0.76	339	21
8610	8.90 [226]	9.50 [241]	0.83	371	23
8611	9.50 [241]	10.10 [257]	0.90	403	25
8612	10.10 [257]	10.70 [272]	0.97	435	27
8612N	10.70 [272]	10.70 [272]	-	-	-
8613	10.70 [272]	11.30 [287]	1.04	467	29
8614	11.30 [287]	11.90 [302]	1.11	498	31
8615	11.90 [302]	12.50 [318]	1.18	530	33

Decorative Grate Options (Load Classifications are per DIN EN1433)

☐ -SBG Stainless Steel Bar Grate - Class E

MADE in the U.S.A.

☐ -BDE-USA Black Acid Resistant Epoxy Coated Ductile Grate - Class E
☐ -DGC-USA Ductile Iron Slotted Grate - Class C
☐ -DGE-USA Ductile Iron Slotted Grate - Class E
☐ -GDC-USA Galvanized Ductile Slotted Grate - Class C
☐ -GDE-USA Galvanized Ductile Slotted Grate - Class E
☐ -GHPDE-USA Galvanized Heel-Proof Ductile Grate - Class E
☐ -HPDE-USA Heel-Proof Ductile Slotted Grate - Class E
☐ -PPC Plastic Perforated Grate - Class C

Miscellaneous Options

☐ -DB Bottom Dome Strainer

* Regularly furnished unless otherwise specified.

Zurn Industries, LLC | Specification Drainage Operation

1801 Pittsburgh Avenue, Erie, PA U.S.A. 16502 · Ph. 855-663-9876, Fax 814-454-7929

In Canada | Zurn Industries Limited

3544 Nashua Drive, Mississauga, Ontario L4V 1L2 · Ph. 905-405-8272, Fax 905-405-1292

www.zurn.com

Rev. F

Date: 1/26/2017

C.N. No. 136162

Prod. | Dwg. No. Z886-HD