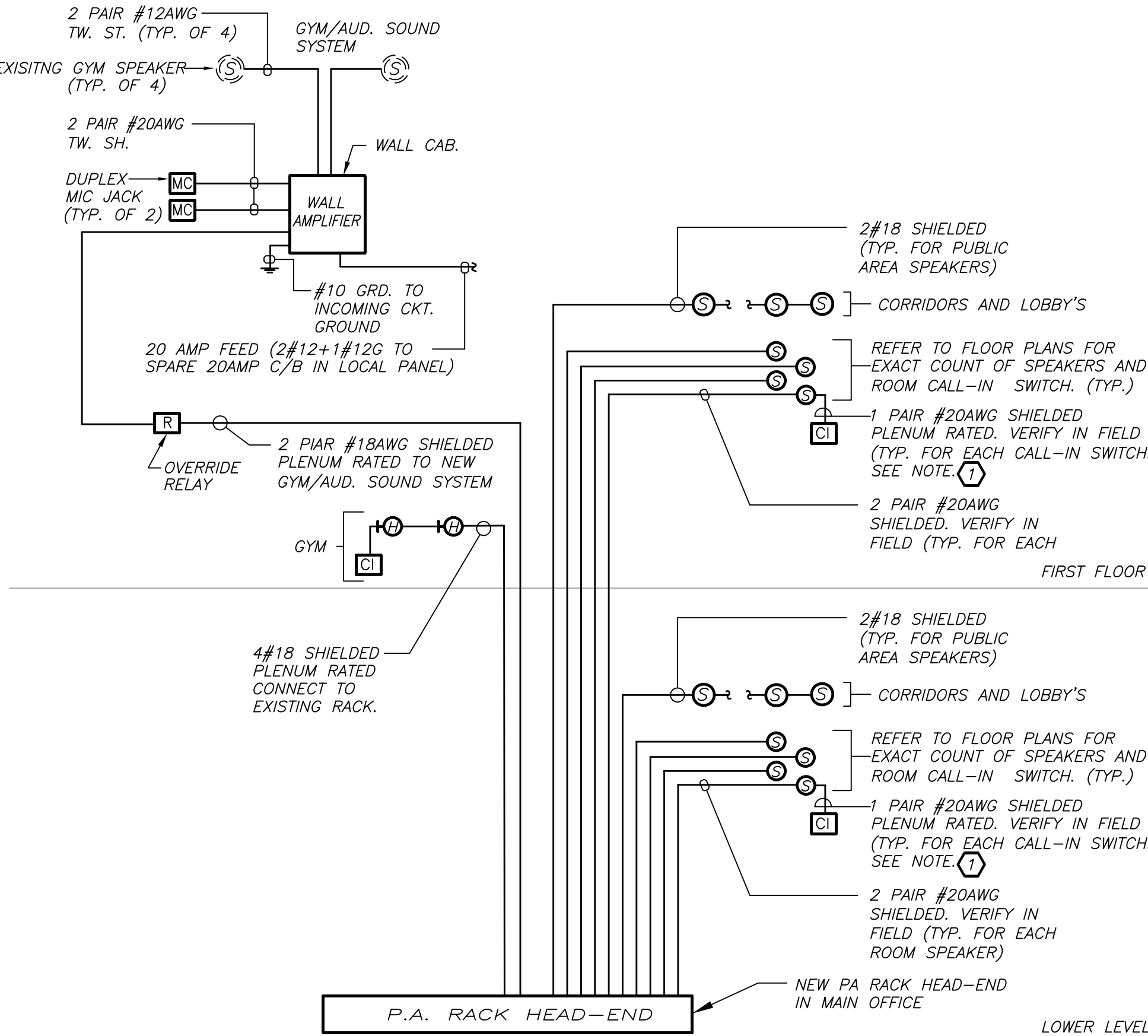


BEFORE FABRICATION THIS CONTRACTOR SHALL VERIFY ALL MEASUREMENTS AND CONDITIONS ON JOB AND COORDINATE HIS WORK WITH THE WORK OF ALL OTHER CONTRACTORS



NOTES:

1. VERIFY EXACT QUANTITY AND LOCATION OF DEVICES ON PLAN DRAWINGS.
2. WIRING TYPES ARE SHOWN FOR REFERENCE ONLY. VERIFY EXACT WIRING REQUIREMENTS WITH MANUFACTURER.
3. ELECTRICAL CONTRACTOR SHALL PROVIDE PLENUM RATED WIRING AND RUN EXPOSED ABOVE ACCESSIBLE CEILING. IT SHALL BE RUN IN EMT CONDUIT WHERE EXPOSED, EXCEPT IN CORRIDORS, CLASSROOMS AND OFFICES WIRING SHALL BE RUN IN STEEL SURFACE RACEWAY (SIMILAR TO WIREMOLD V-500 AND/OR V-700). WIRING SHALL ALSO BE RUN IN EMT FOR STUB-UPS IN CONCEALED WALLS.
4. ALL PROGRAMMING AND FINAL CONNECTIONS TO P.A. SYSTEM RACK SHALL BE BY SYSTEM MAINTENANCE CONTRACTOR. ALL COSTS ASSOCIATED WITH THIS SHALL BE BY ELECTRICAL CONTRACTOR.

WORK NOTES:

- 1 ALL SPEAKERS IN CLASSROOMS, WHERE INDICATED ON FLOOR PLAN SHALL BE PROVIDED WITH CALL-IN SWITCH AND WIRED AS INDICATED.

PUBLIC ADDRESS SYSTEM RISER DIAGRAM 1 E602 N.T.S.

LIGHTING FIXTURE SCHEDULE				
TYPE	MOUNTING	LAMPS	DESCRIPTION	MANUFACTURER & CAT.#
"A" —	RECESSED	41W LED UNV.	RECESSED 7" X 4' ARCHITECTURAL LINEAR DUAL T-BAR LED FIXTURE, 4' LENGTH WITH 1000 LUMENS/FT. 80 CRI, 3500K COLOR TEMPERATURE, WHITE POWDER FINISH.	ARON LIGHTING CAT.# DUOT1-F-4FA-1250-B2-35K8-UNV-DM-W OR APPROVED EQUAL
"B" EMB	CEILING/SURFACE MTD.	40W LED 120V	CEILING SURFACE MOUNTED CANOPY SQUARE LED 12" X 12" FIXTURE, 40 WATT, 3400LUMENS, 80 CRI, 3500K COLOR TEMPERATURE, 0-10V TO 10% DIMMING. OPAL LENS WITH BLACK FINISH. INCLUDE BUILT-IN OCCUPANCY SENSOR AND EMERGENCY BATTERY PACK.	LUMINAIRE LED CAT.# SWP1212-MIN10-40W-35K-120-OP-BLK-EMB310-CAB-OCCTA OR APPROVED EQUAL
"C" EMB	WALL/SURFACE MTD.	15W LED 120V	WALL SURFACE MOUNTED EXTERIOR LED 11" X 7" FIXTURE, 15 WATT, 1700 LUMENS, 80 CRI, 3500K COLOR TEMPERATURE, 0-10V TO 10% DIMMING. OPAL LENS WITH BLACK FINISH. INCLUDE PHOTOCELL AND REMOTE INVERTER.	LUMINAIRE LED CAT.# SWP610-MIN10-15W-35K-120-OP-BLK-EMB20R-CAB-PC OR APPROVED EQUAL
"D" —	WALL/SURFACE MTD.	70W LED UNV.	WALL SURFACE MOUNTED EXTERIOR LED FLOOD LIGHT WITH TYPE 3 DISTRIBUTION, 70 WATT, 5500 LUMENS, 80 CRI, 4000K COLOR TEMPERATURE, 0-10V TO 10% DIMMING. BLACK FINISH, INCLUDE PHOTO CELL. EC TO PROVIDE PROGRAMMING.	US ARCHITECTURAL LIGHTING CAT.# TSUM-LED-VLED-III-64LED-350MA-NW-120-RAL-9005-T-PC120V OR APPROVED EQUAL
"F" —	PENDANT	48W LED 120V	PENDANT/CHAIN MOUNTED 4" ENCLOSED INDUSTRIAL LED LINEAR LIGHT FIXTURE, 6200 LUMEN, WITH 4000K CCT. NON DIM DRIVER.	H.E. WILLIAMS CAT.# 96-4-L62-40-HAFR-DRV-120V OR APPROVED EQUAL
"F" EMR	PENDANT	48W LED 120V	SAME AS TYPE "A" EXCEPT CIRCUIT TO EMERGENCY GENERATOR PANEL. INCLUDE EMERGENCY LIGHTING RELAY TO OVERRIDE SWITCHING.	H.E. WILLIAMS CAT.# 96-4-L62-40-HAFR-DRV-120V OR APPROVED EQUAL
"G" —	RECESSED	16W LED UNV.	RECESSED 7" X 2' ARCHITECTURAL LINEAR DUAL T-BAR LED FIXTURE, 2' LENGTH WITH 750 LUMENS/FT. 80 CRI, 3500K COLOR TEMPERATURE, WHITE POWDER FINISH.	ARON LIGHTING CAT.# DUOT1-F-2FA-750-B2-35K8-UNV-DM-W OR APPROVED EQUAL
EMR "G" —	RECESSED	16W LED UNV.	SAME AS TYPE "G" EXCEPT CIRCUIT TO EMERGENCY GENERATOR PANEL. INCLUDE EMERGENCY LIGHTING RELAY TO OVERRIDE SWITCHING.	ARON LIGHTING CAT.# DUOT1-F-2FA-750-B2-35K8-UNV-DM-W OR APPROVED EQUAL
"H" —	SURFACE	40W LED UNV.	RECESSED 2' X 2' LED EDGE-LIT FLAT PANEL, WITH 4000 LUMENS, 80 CRI, 3500K COLOR TEMPERATURE, INCLUDE SURFACE MOUNT KIT.	H.W. WILLIAMS CAT.# LP-22-L40-835-LP22SMK-DIM-UNV OR APPROVED EQUAL
"I" —	SURFACE	40W LED UNV.	RECESSED 1' X 4' LED EDGE-LIT FLAT PANEL, WITH 4000 LUMENS, 80 CRI, 3500K COLOR TEMPERATURE, INCLUDE SURFACE MOUNT KIT.	H.W. WILLIAMS CAT.# LP-14-L40-835-LP14SMK-DIM-UNV OR APPROVED EQUAL
"JP" —	CEILING/WALL MOUNT	1-5W LED UNV.	LED EXIT LIGHTS, STEEL HOUSING, NUMBER OF FACES AND DIRECTIONAL ARROWS AS INDICATED ON PLANS. SELF POWERED MODEL WITH 90 MINUTE BATTERY.	ENCORE LIGHTING #LSE-6-R-1/U
"WP" —	EXTERIOR WALL MOUNT	1-5W LED UNV.	NEMA 4X EXTERIOR WEATHERPROOF LED EXIT LIGHTS, NUMBER OF FACES AND DIRECTIONAL ARROWS AS INDICATED ON PLANS. SELF POWERED MODEL WITH 90 MINUTE BATTERY.	ENCORE LIGHTING #LE4X-6-R-1/U
"X" —	WALL MOUNT	1-5W LED UNV.	LED DUAL HEAD LIGHTS, STEEL HOUSING, AS INDICATED ON PLANS. SELF POWERED MODEL WITH 90 MINUTE BATTERY.	ENCORE LIGHTING #LCRB-2

AS PER USA CONGRESS ARCHITECTURAL WORKS COPYRIGHT PROTECTION ACT OF 1990 ALL IDEAS AND DESIGNS INCLUDING DERIVATIVES THEREOF, ALL DRAWINGS AND SPECIFICATIONS CONSTITUTE THE ORIGINAL COPYRIGHT WORK BY FULLER AND DANIELO, P.C. (F&D). THE DRAWINGS AND SPECIFICATIONS AS INSTRUMENTS OF SERVICE BY F&D ARE CREATED BY F&D FOR THIS PROJECT ONLY AND REMAIN THE PRODUCT AND PROPERTY OF F&D. ANY REPRODUCTION WITHOUT THE PRIOR CONSENT OF F&D IS PROHIBITED.

BARILE GALLAGHER & ASSOCIATES
CONSULTING ENGINEERS
30 MARBLE AVE. PLEASANTVILLE, NY 10570
914.326.6060 GENENAL@BGA-ENG.COM WWW.BGA-ENG.COM

48 SNELLWOOD ROAD ELMSFORD NEW YORK 10523
TEL 914.898.4444 FAX 914.898.1917
E-MAIL: FULLER@F&D-ARCHITECTS.COM
Copyright 2017 All Rights Reserved by FULLER & DANIELO P.C.

FULLER
DANIELO
P.C.
ARCHITECTS
PLANNERS

S.E.D. CONTROL NUMBER:
66-23-00-01-0-032-010

BID SCHEDULE #

PROJECT TITLE
YONKERS SCHOOL DISTRICT
PHASE 1 OF 2 FOR WINDOWS, MASONRY,
MECHANICAL, ELECTRICAL & SITE WORK
AT SCHOOL P.S. 32
1 MONTCLAIR PLACE, YONKERS, NY 10710

DRAWING TITLE
LIGHTING FIXTURE SCHEDULE & RISER

01-23-2024	BID ADDENDUM 3
12-22-2023	BID
11-06-2020	100% C.D. SUBMISSION
06-01-2020	100% D.D. SUBMISSION
05-01-2020	50% D.D. SUBMISSION
DATE	ISSUED TO

SHEET SIZE 30"x42"	DRAWING NO. E602
SCALE AS NOTED	FILE NO. 19360.00
DRAWN BY BGA	