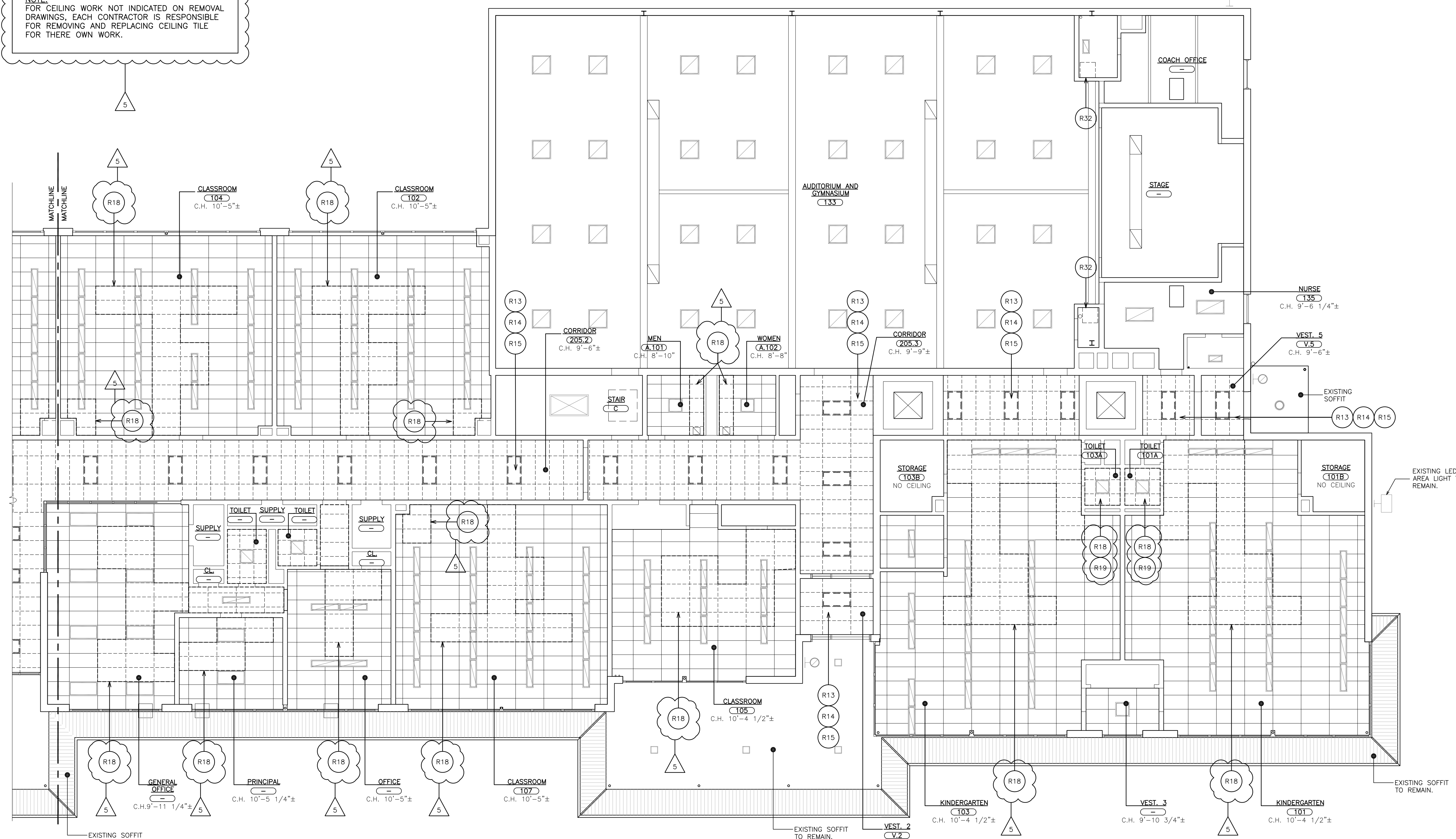


REMOVAL NOTES:  
(COORDINATE REMOVALS W/ HAZARDOUS MATERIAL DRAWINGS)

- R1 SAW-CUT AND REMOVE PORTION OF EXISTING LOAD-BEARING CMU PARTITION. INSTALL STEEL UNITS AS PER DETAIL 9/11.13. COORDINATE SIZES AND LOCATIONS WITH MECHANICAL CONTRACTOR.
  - R2 EXISTING PLUMBING FIXTURES AND CARRIERS TO BE REMOVED BY PLUMBING CONTRACTOR. SEE PLUMBING DRAWINGS.
  - R3 EXISTING LOUVER IN METAL PANEL TO REMAIN.
  - R4 REMOVE EXISTING DOORS, METAL FRAMES, TRANSOMS, HARDWARE, SADDLES, SIDE-LITES AND ALL RELATED ITEMS. PATCH ALL DISTURBED SURFACES TO MATCH EXISTING ADJACENT SURFACES.
  - R5 SAW-CUT AND REMOVE CMU PARTITION(S) FROM SLAB TO STRUCTURE ABOVE. PATCH DISTURBED SURFACES TO MATCH EXISTING ADJACENT SURFACES. GRIND DOWN ANY HIGH SPOTS UNDER EXISTING WALL. FLASH PATCH SMOOTH TO ADJACENT SURFACES.
  - R6 SAW-CUT AND REMOVE PORTION OF CMU PARTITION FOR INSTALLATION OF NEW DOOR FRAME. WORK IN MANNER WHICH PROVIDE CONTINUOUS SUPPORT OF MASONRY ABOVE.
  - R7 REMOVE EXISTING WALL MOUNTED LADDER, HANGING PLATFORM, AND ALL RELATED ITEMS. PATCH TO MATCH EXISTING ADJACENT SURFACES.
  - R8 REMOVE EXISTING DOOR, HARDWARE, THRESHOLD AND ALL RELATED ITEMS FOR INSTALLATION OF NEW DOOR AND HARDWARE. FRAMES TO REMAIN.
  - R9 NOT USED
  - R10 SAW-CUT AND REMOVE PORTION OF EXISTING REINFORCED CONCRETE SLAB, VAPOR BARRIER AND SUB-BASE FOR INSTALLATION OF PLUMBING PIPE.
  - R11 REMOVE EXISTING METAL LOCKERS, BASES ALL ASSOCIATED ITEMS. PATCH DISTURBED SURFACES TO MATCH EXISTING ADJACENT SURFACE.
  - R12 NOT USED
  - R13 REMOVE EXISTING SUSPENDED CEILING ASSEMBLY (2x4 OR 2x2), SUSPENSION SYSTEM, PANELS, WALL ANGLES, SEISMIC TIES AND ALL RELATED ITEMS. COORDINATE WORK WITH E-CONTRACTOR. PATCH ALL DISTURBED SURFACES TO MATCH EXISTING ADJACENT SURFACES. TEMPORARILY SUPPORT ALL LIGHT FIXTURES, PA SPEAKERS, FA DEVICES, WAF'S, ETC.
  - R14 EXISTING LIGHT FIXTURE TO BE REMOVED. SEE ELECTRICAL DRAWINGS.
  - R15 EXISTING CEILING MOUNTED DEVICES TO BE REMOVED. SEE ELECTRICAL DRAWINGS.
  - R16 EXISTING DIFFUSER TO BE REMOVED. SEE MECHANICAL DRAWINGS.
  - R17 REMOVE EXISTING RECESSED C.U.H. SAW-CUT AND REMOVE PORTION OF EXISTING CMU PARTITION FOR INSTALLATION OF NEW RECESSED C.U.H. AND STEEL UNITS. SEE M-DINGS WORK IN A MANNER WHICH PROVIDES CONTINUOUS SUPPORT OF MASONRY ABOVE. SEE DETAIL 9/9-506.
  - R18 G.C. TO REMOVE PORTION OF EXISTING CEILING TILES, CUT AND REMOVE GRID AS SHOWN. MINIMUM OR REQUIRE FOR M-CONTRACTOR TO INSTALL CEILING CASSETTES & DUCT WORK. RESISTING ENDS OF CUT EXISTING SUSPENSION GRID, LIGHT FIXTURE AND OTHER DEVICES.
  - R19 EXISTING LIGHT FIXTURES TO BE REMOVED AND RELOCATED FOR INSTALLATION OF NEW CASSETTE UNIT.
  - R20 CAREFULLY DISCONNECT AND REMOVE EXISTING LOUVER, BLANK-OFF PANELS, BRACKETS, AND ALL ASSOCIATED ITEMS FROM EXISTING UNIT VENTILATORS.
  - R21 NOT USED
  - R22 NOT USED
  - R23 REMOVE EXISTING CASEWORK, COUNTERTOPS, BASE AND ALL RELATED ITEMS. PATCH ALL DISTURBED SURFACES TO MATCH EXISTING ADJACENT SURFACES.
  - R24 REMOVE EXISTING VCT FLOOR TILE. (MULTIPLE LAYER MAY EXIST) WALL BASE, TRANSITION STRIPS, MASTIC AND SUBGRADE DOWN TO EXISTING SLAB. MECHANICALLY PROFILE 100% OF EXISTING FLOOR SLAB FOR NEW FLOOR FINISHES.
  - R25 NOT USED
  - R26 EXCAVATE EXISTING AND REMOVE SOIL AND ROCK DOWN FOR INSTALLATION OF NEW REINFORCED CONCRETE FLOOR SLAB. PROVIDE UNDER PILING AS REQUIRED.
  - R27 EXISTING UNIT VENTILATOR TO BE REMOVED. SEE MECHANICAL DRAWINGS.
  - R28 REMOVE PORTION OF EXISTING METAL LOCKERS AND TURN OVER TO OWNER AND REMOVE CONCRETE BASE. PROVIDE NEW CLOSURE PLATE FOR END METAL LOCKERS. PATCH AND ALL DISTURBED SURFACES TO MATCH EXISTING. PROVIDE NEW VCT FLOOR & GAZE TO MATCH EXISTING.
  - R29 EXCAVATE AND REMOVE EXISTING SOIL AND LOOSE ROCK. LEVEL AREA EXISTING SOIL FILL IN ANY DEPRESSION. PROVIDE A MINIMUM OF 4" GRAVEL OVER ENTIRE AREA.
  - R30 SAW-CUT AND REMOVE PORTION OF REINFORCED CONCRETE WALL FOR INSTALLATION OF NEW MECHANICAL LOUVER.
  - R31 SAW-CUT AND REMOVE PORTION OF CMU PARTITION FOR INSTALLATION OF NEW MECHANICAL LOUVER. WORK IN MANNER WHICH PROVIDE CONTINUOUS SUPPORT OF MASONRY ABOVE.
  - R32 SAW-CUT AND REMOVE PORTION OF EXISTING REINFORCED CONCRETE FLOOR SLAB FOR INSTALLATION OF MECHANICAL DUCTS. COORDINATE SIZE WITH MECHANICAL DRAWINGS.
  - R33 REMOVE EXISTING CONCEALED FILLED METAL PAN STAIR, HANDRAILS AND ALL RELATED ITEMS.

**NOTE:**  
FOR CEILING WORK NOT INDICATED ON REMOVAL  
DRAWINGS, EACH CONTRACTOR IS RESPONSIBLE  
FOR REMOVING AND REPLACING CEILING TILE  
FOR THERE OWN WORK.



AS PER U.S. CONGRESS ARCHITECTURAL WORKS COPYRIGHT PROTECTION ACT OF 1990 ALL IDEAS AND DESIGNS INCLUDING DERIVATIVES THEREOF, ALL DRAWINGS AND SPECIFICATIONS CONSTITUTE THE ORIGINAL COPYRIGHT WORK BY FULLER AND D'ANGELO, P.C. (F&D). THE DRAWINGS AND SPECIFICATIONS AS INSTRUMENTS OF SERVICE BY F&D ARE CREATED BY F&D FOR THIS PROJECT ONLY AND REMAIN THE PRODUCT AND PROPERTY OF F&D. ANY REPRODUCTION WITHOUT THE PRIOR CONSENT OF F&D IS PROHIBITED.

TEL 914.592.4444 FAX 914.592.1717  
WWW.FULLERDANGELO.COM


FULLER  
D'ANGELO  
P.C.

ARCHITECTS  
PLANNERS

E.D. CONTROL NUMBER:  
66-23-00-01-0-032-010

PS JOB # 10876

NY 10710

02-02-05-2024	ADDENDUM 
02-22-2023	BID
1-06-2020	100% C.D. SUBMISSION
06-01-2020	100% D.D. SUBMISSION
05-01-2020	50% D.D. SUBMISSION
DATE	ISSUED TO
DATE SIZE 30"x42"	DRAWING NO.
SCALE	AR201
NOTED	FILE NO. 19360.01
APPROVED BY F & D	