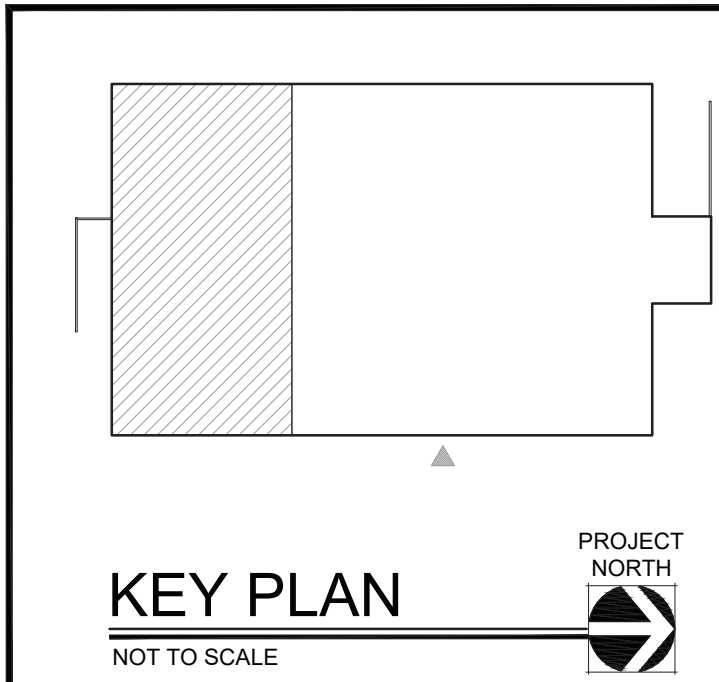


PLUMBING DEMOLITION KEYED NOTES (APPLIES TO THIS SHEET ONLY)

1 DEMOLISH ALL GAS PIPING TO SERVICE LOCATION.



Date	10/15/21
Checked	SZ
Drawn	BH/DC/KC

SCOTT P. ZIEGLER
THE LICENSED PROFESSIONAL ENGINEER New York License No. 091035

Revisions:

1	PERMIT SET 10/15/21
---	------------------------

UNAUTHORIZED ALTERATIONS OR ADDITIONS TO THIS DOCUMENT IS A VIOLATION OF SECTION 2209 OF THE NEW YORK STATE EDUCATION LAW. THESE DOCUMENTS REMAIN THE EXCLUSIVE PROPERTY OF THE ENGINEER, AND MAY NOT BE USED FOR ANY PURPOSE WHATSOEVER WITHOUT THE WRITTEN CONSENT OF THE ENGINEER.

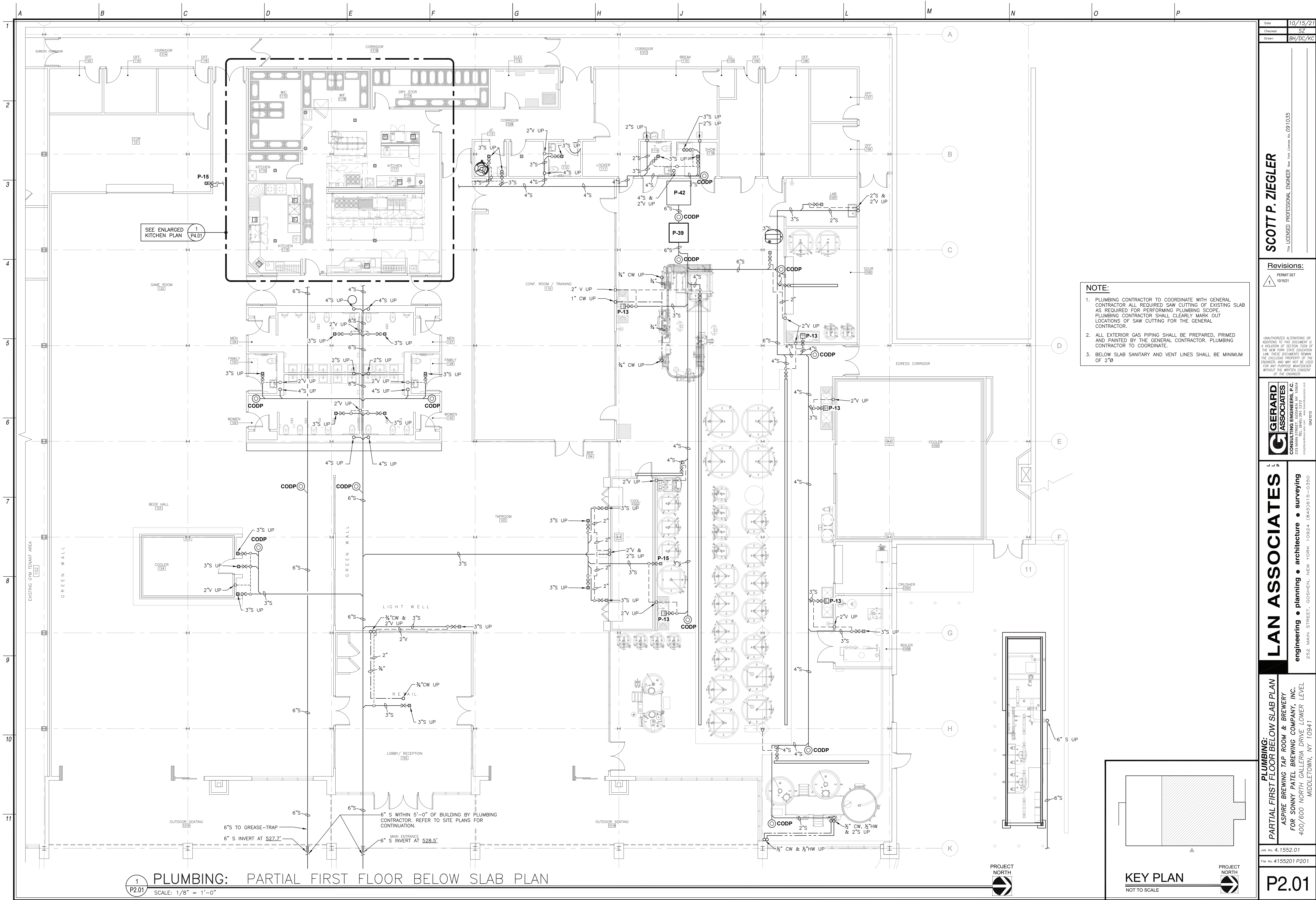
GERARD ASSOCIATES P.C.
CONSULTING ENGINEERS P.C.
228 MAIN STREET, GOSHEN, NY 10924
info@gerardassociates.com www.gerardassociates.com
GA21013

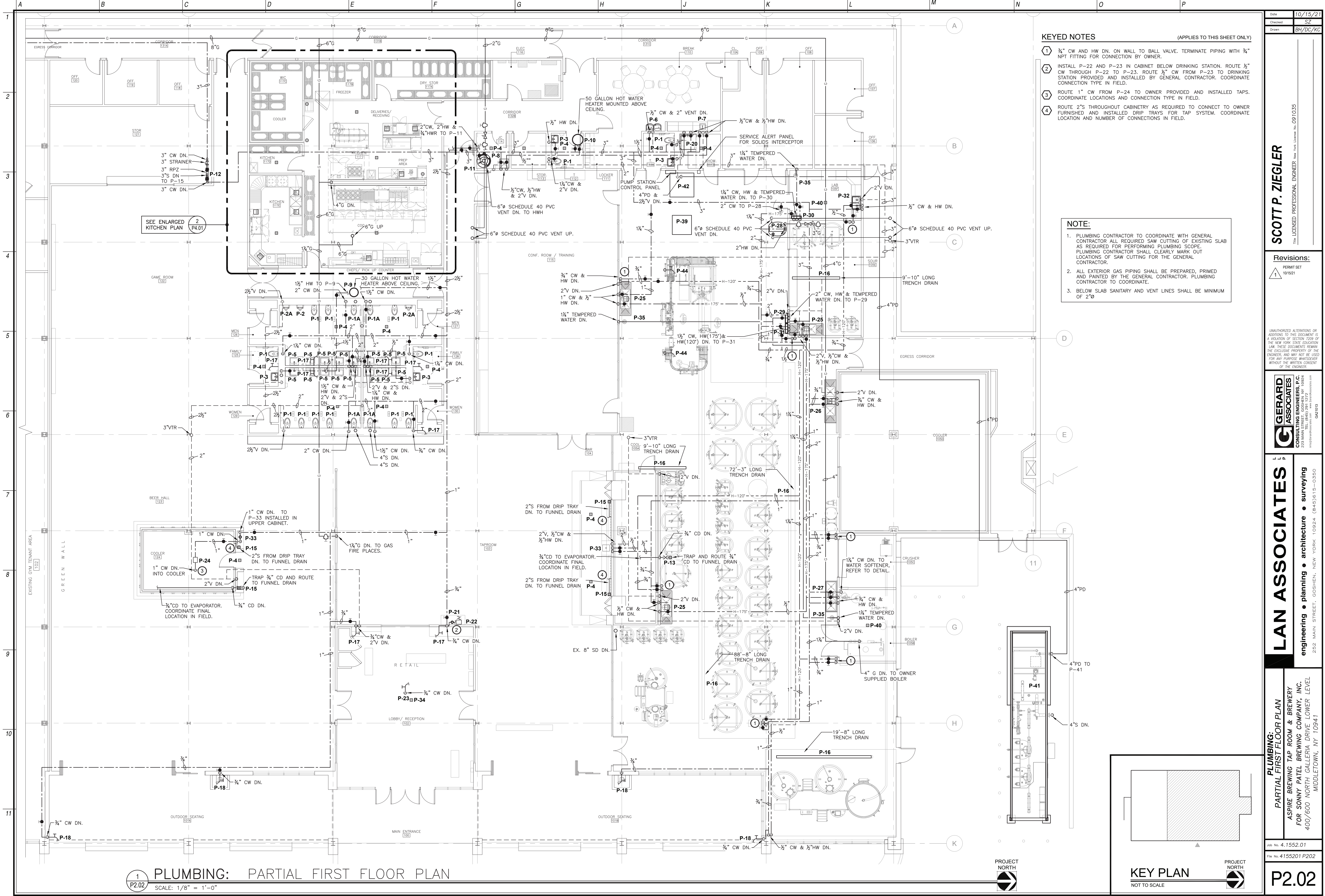
LAN ASSOCIATES
engineering • planning • architecture • surveying
252 MAIN STREET, GOSHEN, NEW YORK 10924 (845)615-0350

PLUMBING:
PARTIAL SECOND FLOOR DEMOLITION PLAN
ASPIRE BREWING TAP ROOM & BREWERY
FOR SONNY PATEL BREWING COMPANY, INC.
400/600 NORTH GALLERIA DRIVE LOWER LEVEL
MIDDLETOWN, NY 10941

Job No. 4.1552.01
File No. 4155201 P102

P1.02





KEYED NOTES (APPLIES TO THIS SHEET ONLY)

- 1 3/4" CW AND HW DN. ON WALL TO BALL VALVE. TERMINATE PIPING WITH 3/4" NPT FITTING FOR CONNECTION BY OWNER.
- 2 INSTALL P-22 AND P-23 IN CABINET BELOW DRINKING STATION. ROUTE 1/2" CW THROUGH P-22 TO P-23. ROUTE 1/2" CW FROM P-23 TO DRINKING STATION PROVIDED AND INSTALLED BY GENERAL CONTRACTOR. COORDINATE CONNECTION TYPE IN FIELD.
- 3 ROUTE 1" CW FROM P-24 TO OWNER PROVIDED AND INSTALLED TAPS. COORDINATE LOCATIONS AND CONNECTION TYPE IN FIELD.
- 4 ROUTE 2" S THROUGHOUT CABINETRY AS REQUIRED TO CONNECT TO OWNER FURNISHED AND INSTALLED DRIP TRAYS FOR TAP SYSTEM. COORDINATE LOCATION AND NUMBER OF CONNECTIONS IN FIELD.

NOTE:

1. PLUMBING CONTRACTOR TO COORDINATE WITH GENERAL CONTRACTOR ALL REQUIRED SAW CUTTING OF EXISTING SLAB AS REQUIRED FOR PERFORMING PLUMBING SCOPE. PLUMBING CONTRACTOR SHALL CLEARLY MARK OUT LOCATIONS OF SAW CUTTING FOR THE GENERAL CONTRACTOR.
2. ALL EXTERIOR GAS PIPING SHALL BE PREPARED, PRIMED AND PAINTED BY THE GENERAL CONTRACTOR. PLUMBING CONTRACTOR TO COORDINATE.
3. BELOW SLAB SANITARY AND VENT LINES SHALL BE MINIMUM OF 2'-0"

SCOTT P. ZIEGLER
THE LICENSED PROFESSIONAL ENGINEER NEW YORK LICENSE NO. 091035

Revisions:

- | NO. | REVISION |
|-----|---------------------|
| 1 | PERMIT SET 10/15/21 |

UNAUTHORIZED ALTERATIONS OR ADDITIONS TO THIS DOCUMENT IS A VIOLATION OF SECTION 2209 OF THE NEW YORK STATE EDUCATION LAW. THESE DOCUMENTS REMAIN THE EXCLUSIVE PROPERTY OF THE ENGINEER, AND MAY NOT BE USED FOR ANY PURPOSE WHATSOEVER WITHOUT THE WRITTEN CONSENT OF THE ENGINEER.

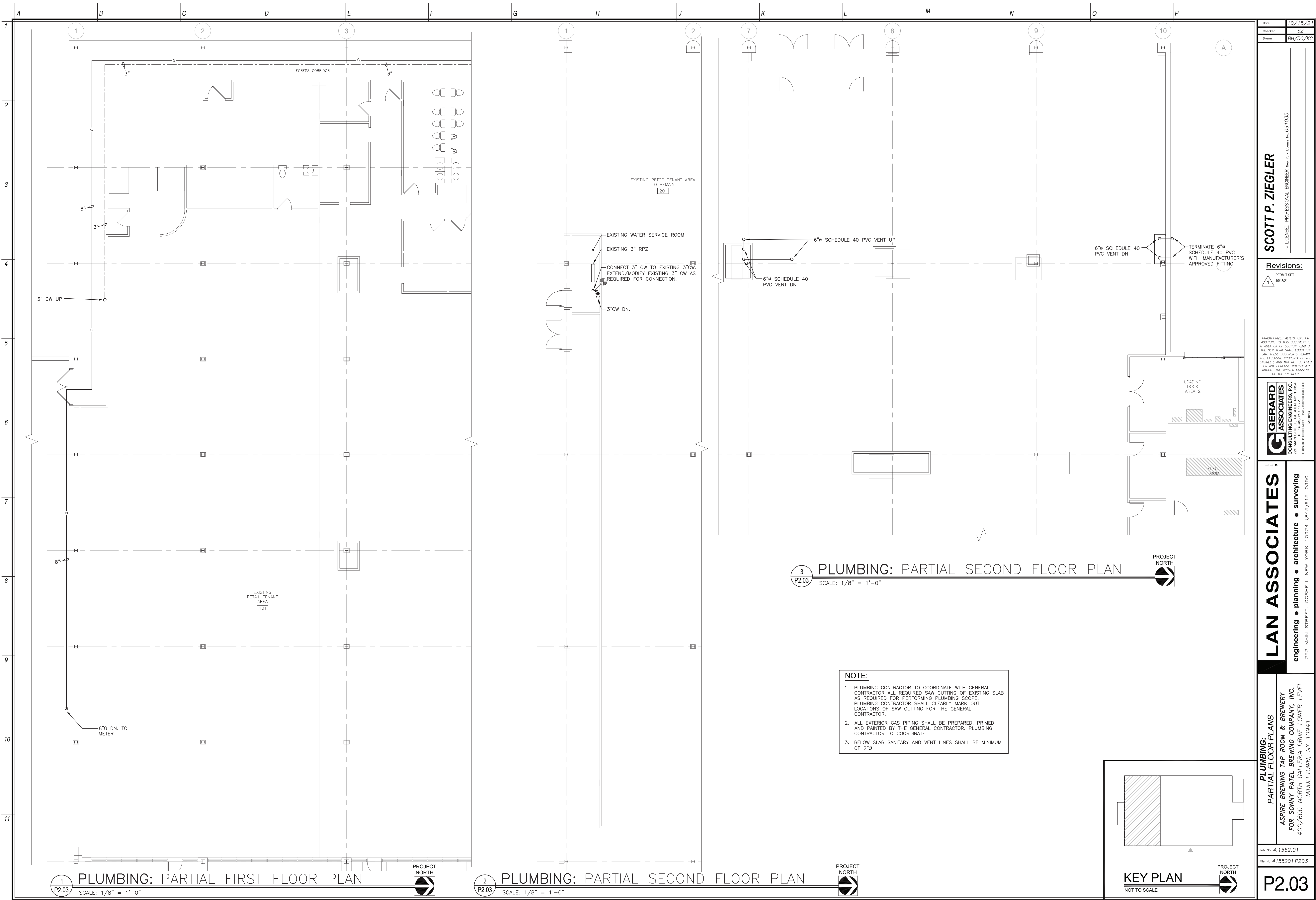
GERARD ASSOCIATES P.C.
CONSULTING ENGINEERS P.C.
228 MAIN STREET, GOSHEN, NY 10924
info@gerardassociates.com www.gerardassociates.com
0421013

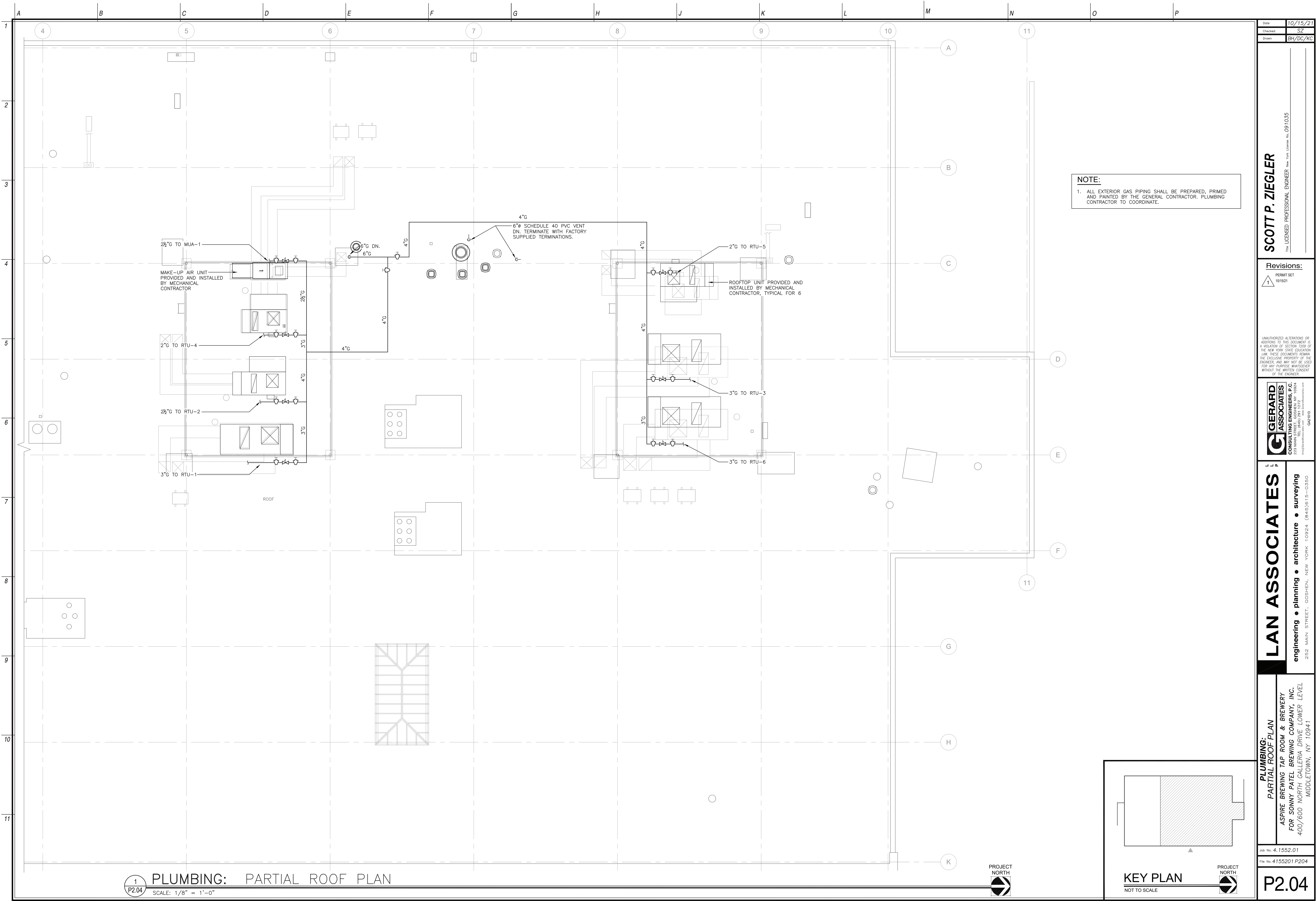
LAN ASSOCIATES
engineering • planning • architecture • surveying
252 MAIN STREET, GOSHEN, NEW YORK 10924 (845)613-0350

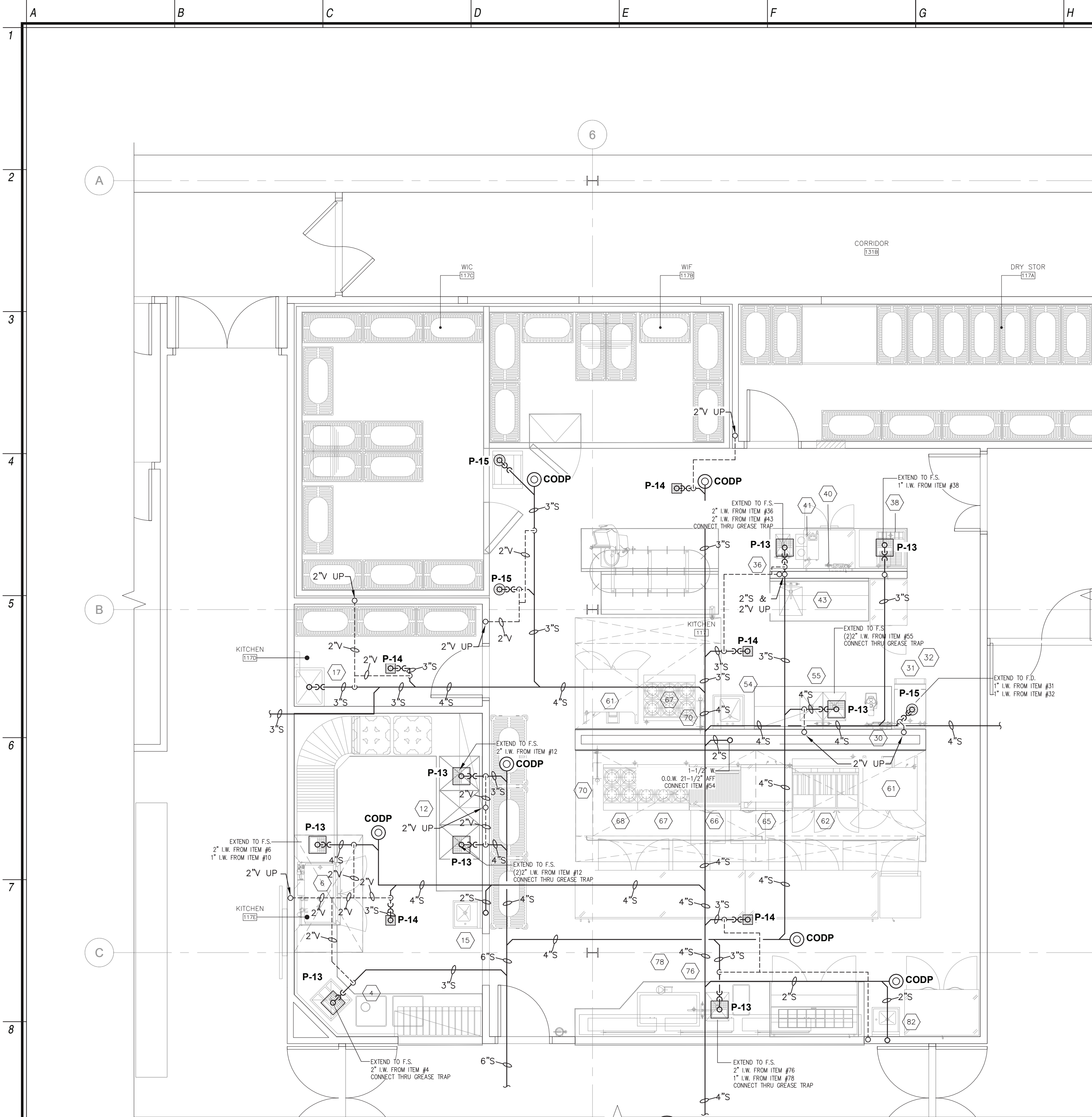
PLUMBING:
PARTIAL FIRST FLOOR PLAN
ASPIRE BREWING TAP ROOM & BREWERY
FOR SONNY PATIL BREWING COMPANY, INC.
400/600 NORTH GALLERIA DRIVE LOWER LEVEL
MIDDLETOWN, NY 10941

Job No. 4.1552.01
File No. 4155201 P202

P2.02







1
P4.01 **PLUMBING: ENLARGED KITCHEN AREA BELOW SLAB PLAN**
SCALE: 1/4" = 1'-0"

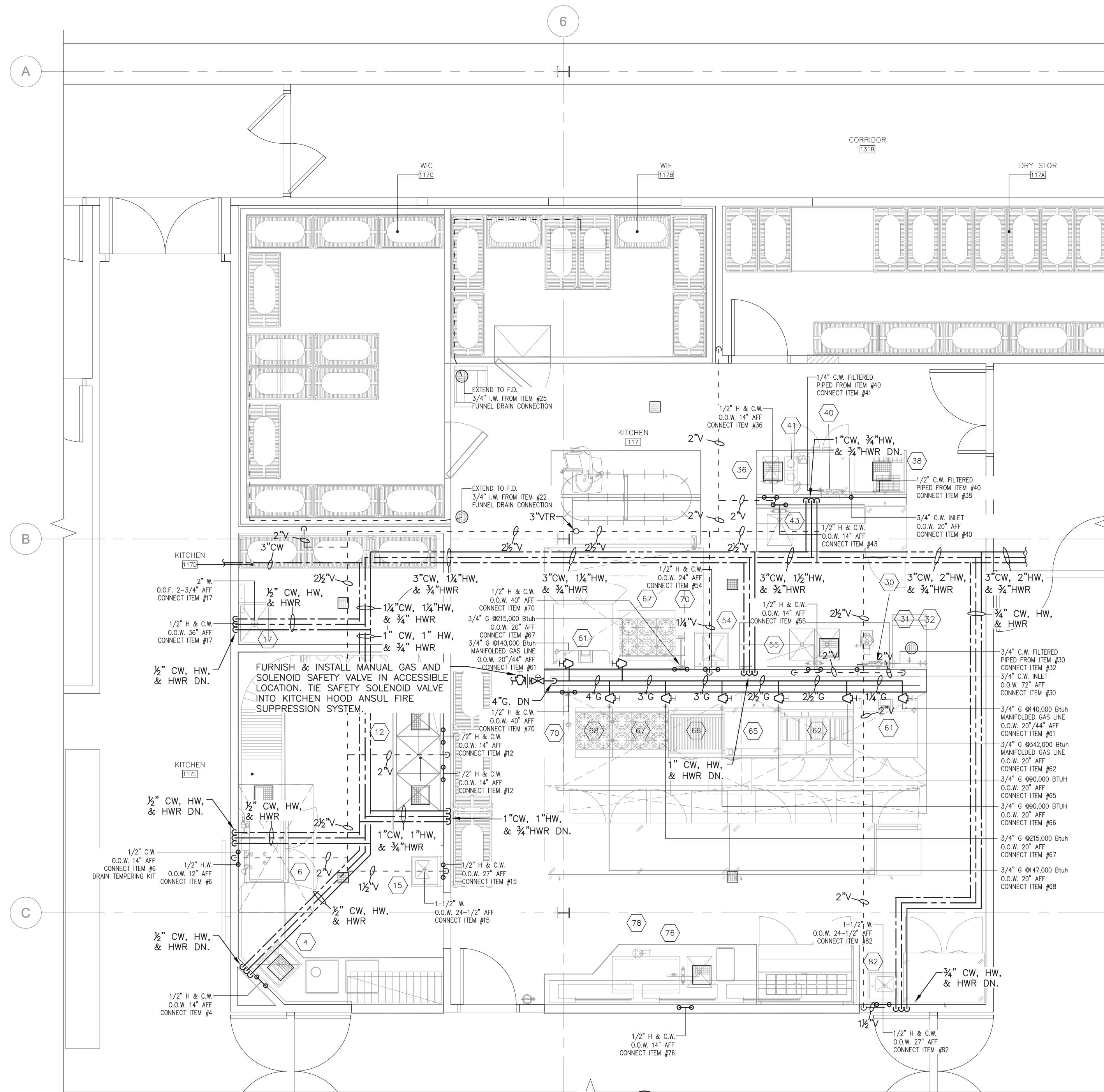


PLUMBING FOOD SERVICE EQUIPMENT NOTES:

1. SHUT-OFF VALVES ON THE INLET SIDE OF THE COLD AND HOT WATER LINES SERVING EACH PIECE OF EQUIPMENT ARE TO BE FURNISHED AND INSTALLED BY THE PLUMBING CONTRACTOR.
2. IF WATER PRESSURE AT THE EQUIPMENT AREA EXCEEDS 50 POUNDS OF PRESSURE, THE PLUMBING CONTRACTOR MUST INSTALL A PRESSURE REDUCING VALVE ON BOTH THE MAIN HOT WATER AND COLD WATER SUPPLY LINES SERVING THE AREA.
3. PLUMBING CONTRACTOR IS TO REVIEW ALL CATALOG DATA PROVIDED AS PART OF THE FOOD SERVICE CONTRACT DOCUMENTS.
4. PLUMBING CONTRACTOR TO VERIFY, FURNISH AND INSTALL ALL REQUIRED PLUMBING ROUGH-INS FOR ALL NEW EQUIPMENT BEING SUPPLIED BY THE KITCHEN EQUIPMENT CONTRACTOR.
5. KITCHEN EQUIPMENT CONTRACTOR TO SET IN PLACE, EQUIPMENT AT THE SITE IN ACCORDANCE WITH THESE PLANS AND TERMS OF CONTRACT WITH OWNER.
6. ALL PLUMBING INCLUDING "ROUGH-INS, INTERCONNECTIONS BETWEEN COUNTERS, CONTROLS, SWITCHES, ETC.," AND "FINAL CONNECTIONS" TO THE EQUIPMENT, IS TO BE PERFORMED BY APPROPRIATE TRADES. IT IS NOT PART OF THE KITCHEN EQUIPMENT CONTRACTORS SCOPE OF WORK UNLESS OTHERWISE SPECIFIED.
7. TO EXPEDITE AND INSURE PROPER INSTALLATION OF COOKING EQUIPMENT, IT IS RECOMMENDED THAT "ALL FINAL CONNECTIONS" ARE TO BE PERFORMED BY APPROPRIATE TRADES AT THE SAME TIME THE KITCHEN EQUIPMENT CONTRACTOR IS SETTING THE EQUIPMENT IN PLACE.
8. REFER TO FOOD SERVICE EQUIPMENT DRAWINGS FOR MORE INFORMATION.

NOTE:

1. PLUMBING CONTRACTOR TO COORDINATE WITH GENERAL CONTRACTOR ALL REQUIRED SAW CUTTING OF EXISTING SLAB AS REQUIRED FOR PERFORMING PLUMBING SCOPE. PLUMBING CONTRACTOR SHALL CLEARLY MARK OUT LOCATIONS OF SAW CUTTING FOR THE GENERAL CONTRACTOR.
2. ALL EXTERIOR GAS PIPING SHALL BE PREPARED, PRIMED AND PAINTED BY THE GENERAL CONTRACTOR. PLUMBING CONTRACTOR TO COORDINATE.
3. BELOW SLAB SANITARY AND VENT LINES SHALL BE MINIMUM OF 2"Ø



2
P4.01 **PLUMBING: ENLARGED KITCHEN AREA PLAN**
SCALE: 1/4" = 1'-0"



KEY PLAN
NOT TO SCALE



PLUMBING:
ENLARGED KITCHEN AREA PLANS
ASPIRE BREWING TAP ROOM & BREWERY
FOR SONNY PATEL BREWING COMPANY, INC.
400/600 NORTH GALLERIA DRIVE LOWER LEVEL
MIDDLETOWN, NY 10941

Job No. 4.1552.01

File No. 4155201 P401

P4.01

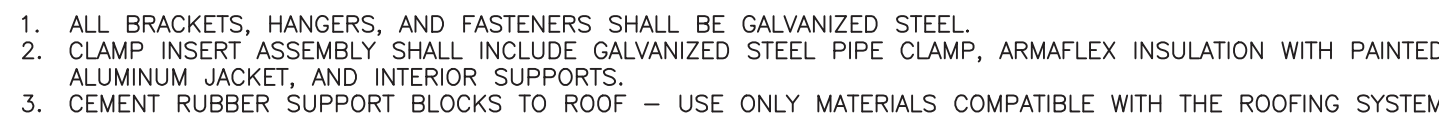


LAN ASSOCIATES
engineering • planning • architecture • surveying
252 MAIN STREET, GOSHEN, NEW YORK 10924 (845)813-0350

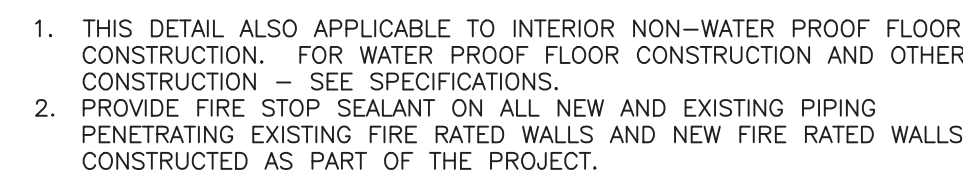
Revisions:
1
PERMIT SET
10/15/21

SCOTT P. ZIEGLER
THE LICENSED PROFESSIONAL ENGINEER NEW YORK LICENSE NO. 091035

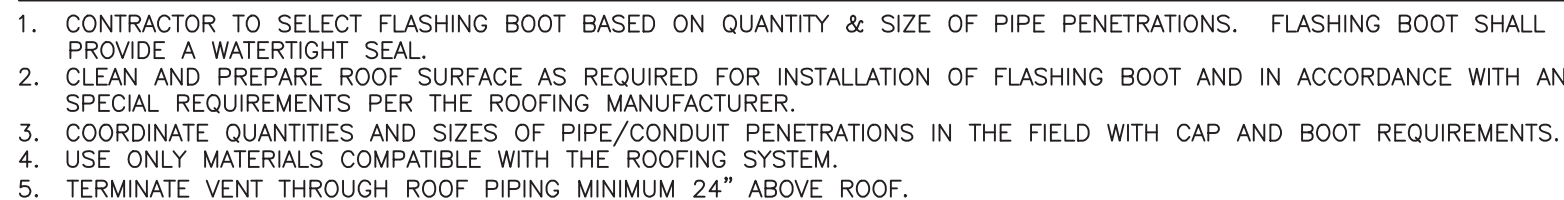
Date 10/15/21
Checked SZ
Drawn BH/DC/KC



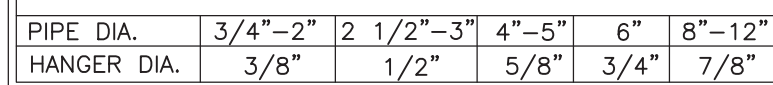
NOT TO SCALE



NOT TO SCALE



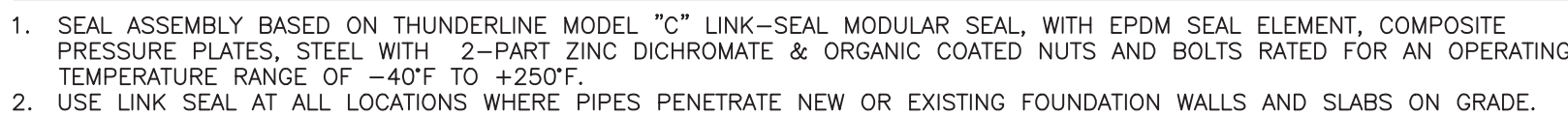
NOT TO SCALE



NOT TO SCALE



NOT TO SCALE



NOT TO SCALE



NOT TO SCALE



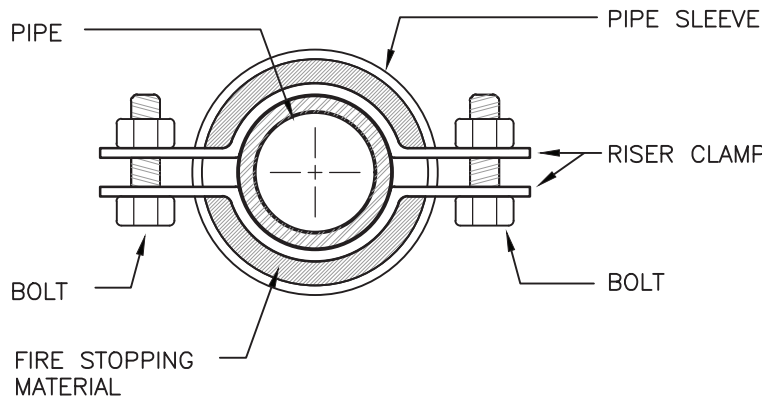
NOT TO SCALE



NOT TO SCALE

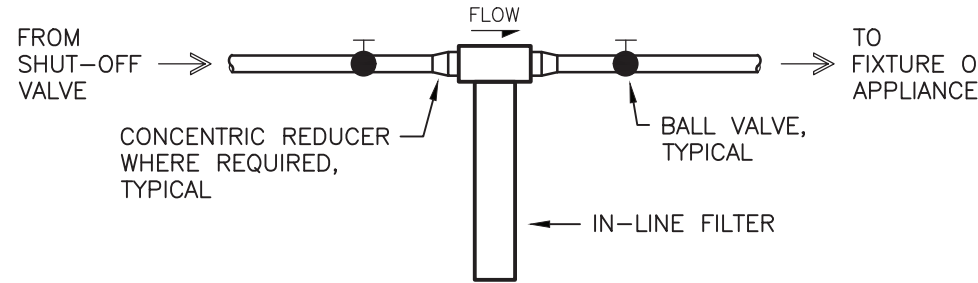


NOT TO SCALE



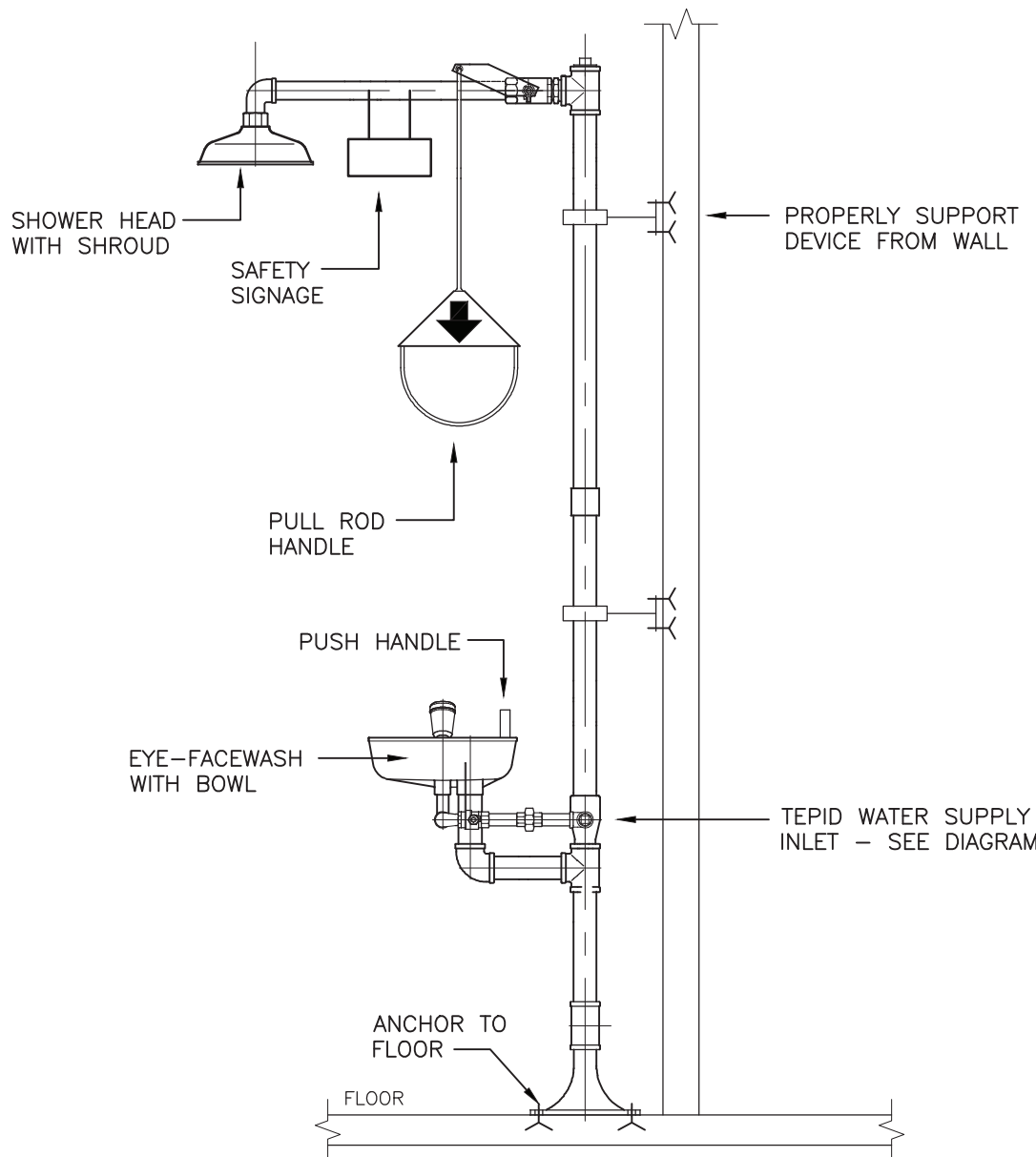
SUPPORT ANCHOR FOR PIPE RISERS

NOT TO SCALE



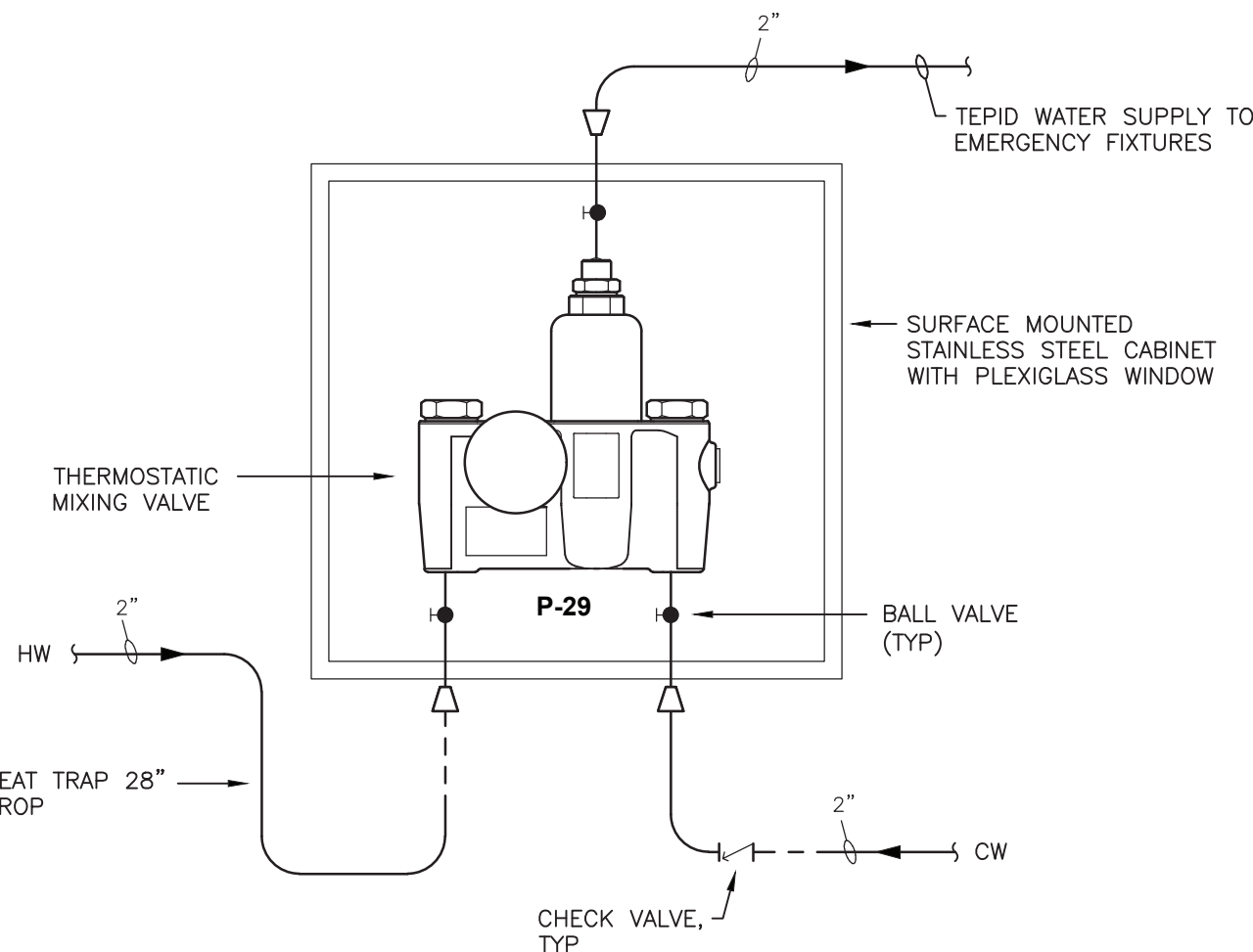
IN-LINE FILTER (P-19) DETAIL

NOT TO SCALE



COMBINATION SHOWER / EYE WASH DETAIL

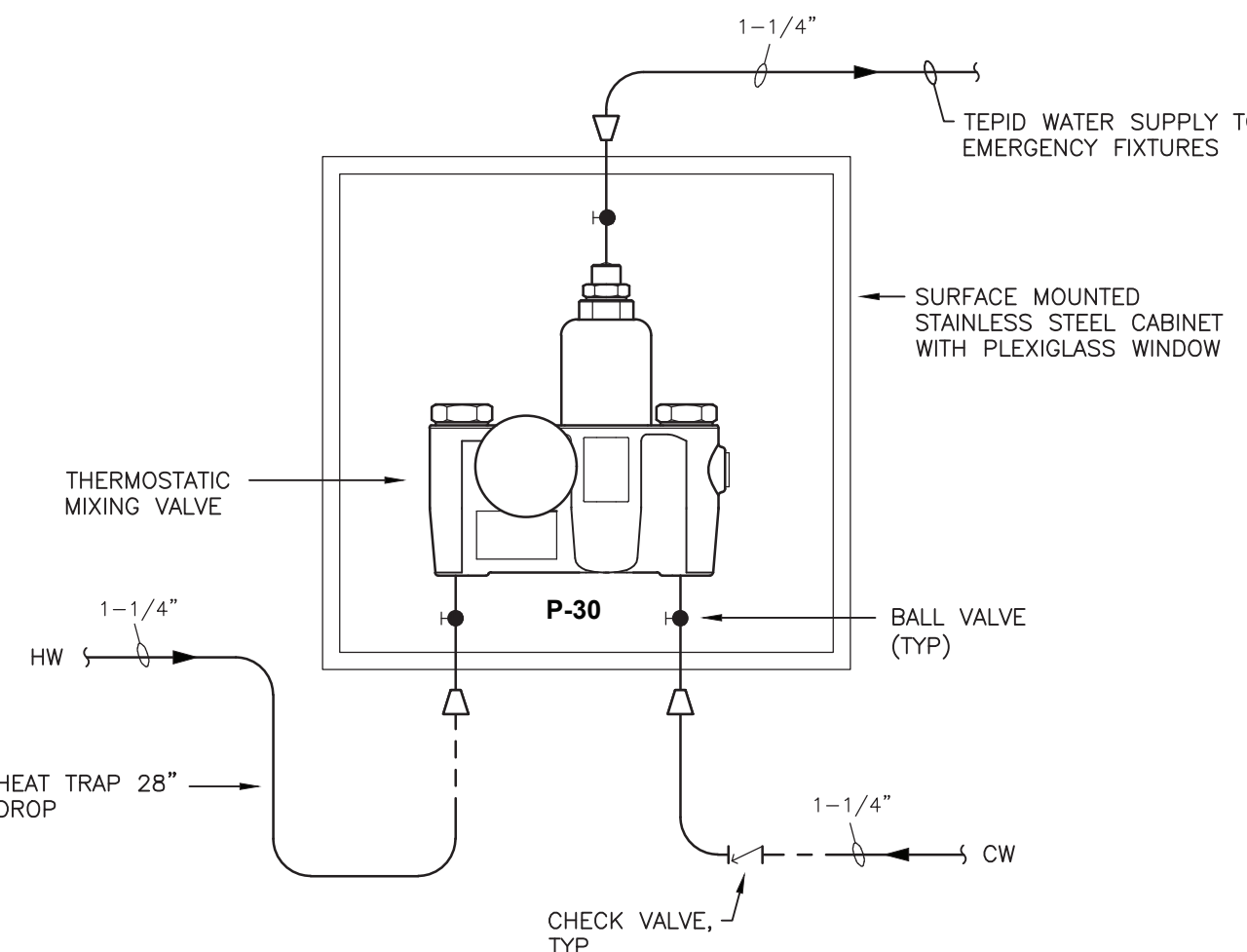
NOT TO SCALE



- NOTES:
- BALL VALVES ARE FOR SERVICING MIXING VALVE ONLY. CONTRACTOR SHALL REMOVE VALVE HANDLES WITH THE VALVES IN THE FULL OPEN POSITION. ATTACH VALVE HANDLES TO VALVE BODY.

EMERGENCY FIXTURE THERMOSTATIC MIXING VALVE (P-29) DIAGRAM

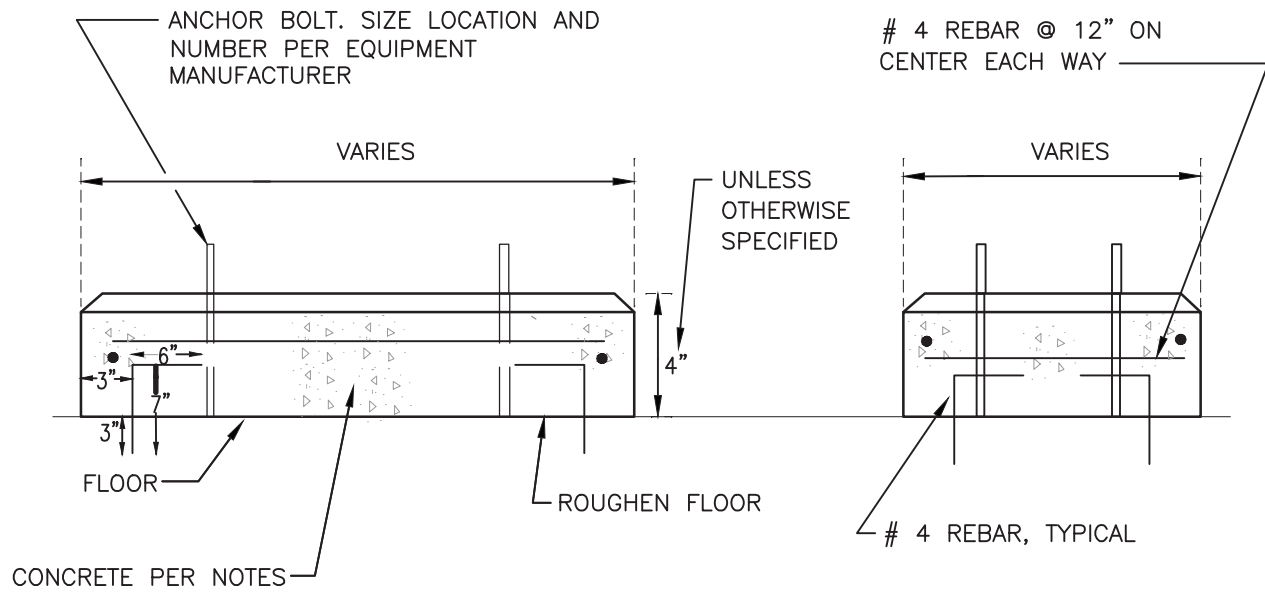
NOT TO SCALE



- NOTES:
- BALL VALVES ARE FOR SERVICING MIXING VALVE ONLY. CONTRACTOR SHALL REMOVE VALVE HANDLES WITH THE VALVES IN THE FULL OPEN POSITION. ATTACH VALVE HANDLES TO VALVE BODY.

EMERGENCY FIXTURE THERMOSTATIC MIXING VALVE (P-30) DIAGRAM

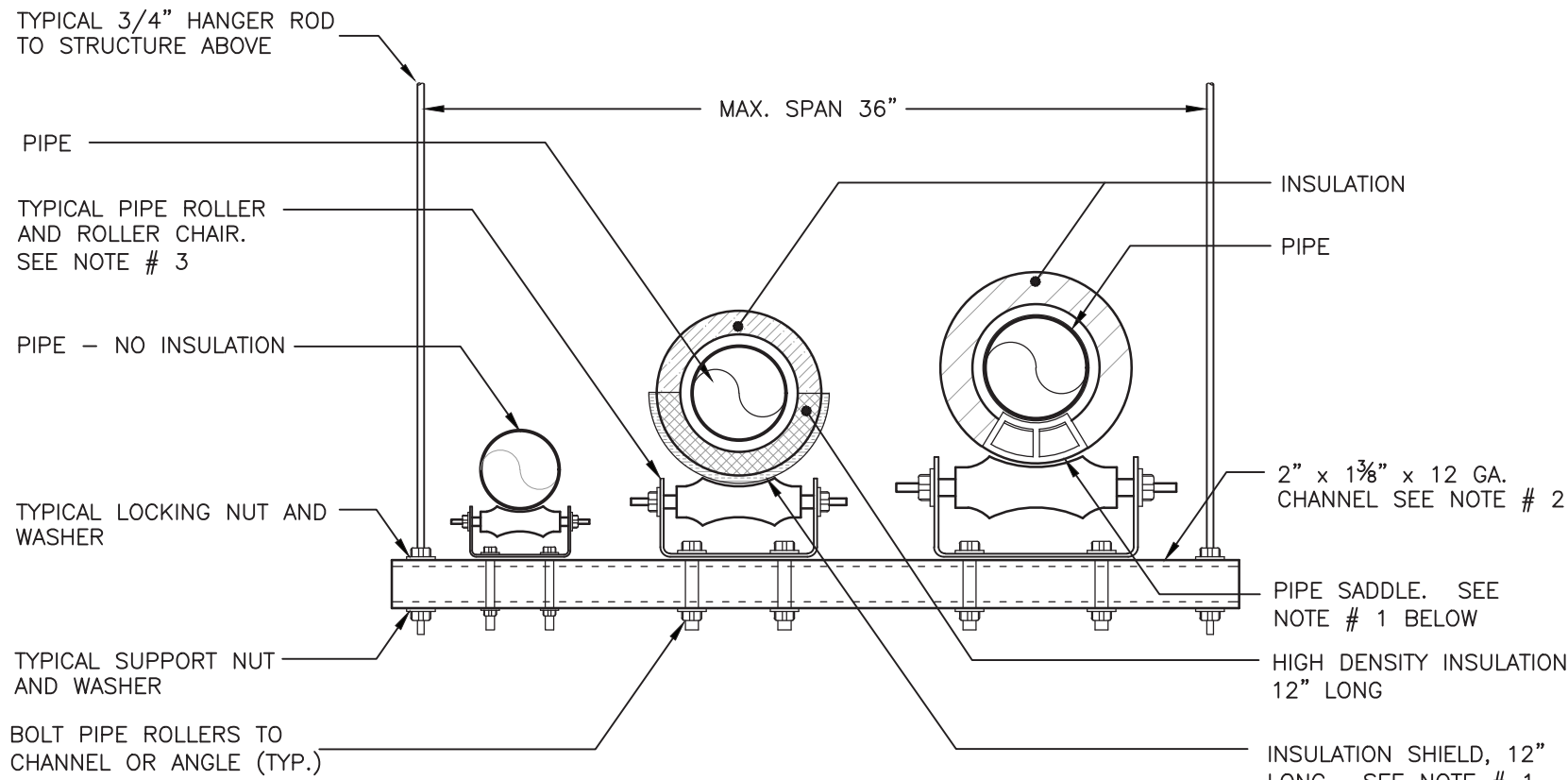
NOT TO SCALE



- NOTES:
- EQUIPMENT PAD SHALL EXTEND 4" ALL AROUND OUTSIDE DIMENSION OF EQUIPMENT BASE.
 - DRILL EXISTING SLAB AS REQUIRED TO INSTALL REBAR 3" INTO THE EXISTING SLAB. GROUT REBAR IN THE DRILLED HOLES.
 - THOROUGHLY ROUGHEN AND CLEAN EXISTING CONCRETE SLAB. SATURATE EXISTING CONCRETE SLAB WITH CLEAN WATER. IMMEDIATELY PRIOR TO DEPOSITING CONCRETE FOR PAD, APPLY A COAT OF CEMENT GROUT OVER THE EXISTING DAMP CONCRETE OR ALLOW EXISTING CONCRETE TO DRY AND APPLY BONDING AGENT (ADHESIVE) OVER THE EXISTING CONCRETE IN ACCORDANCE WITH MANUFACTURER'S DIRECTIONS.
 - CONCRETE REQUIREMENTS: COMPRESSIVE STRENGTH SHALL BE MINIMUM OF 4000 PSI, NORMAL WEIGHT, SLUMP BETWEEN 2 AND 4 INCHES AND PROPORTION MIX WITH A MIN. CEMENT CONTENT OF 611 POUNDS PER CUBIC YARD FOR 4000 PSI CONCRETE.

INTERIOR CONCRETE EQUIPMENT PAD DETAIL

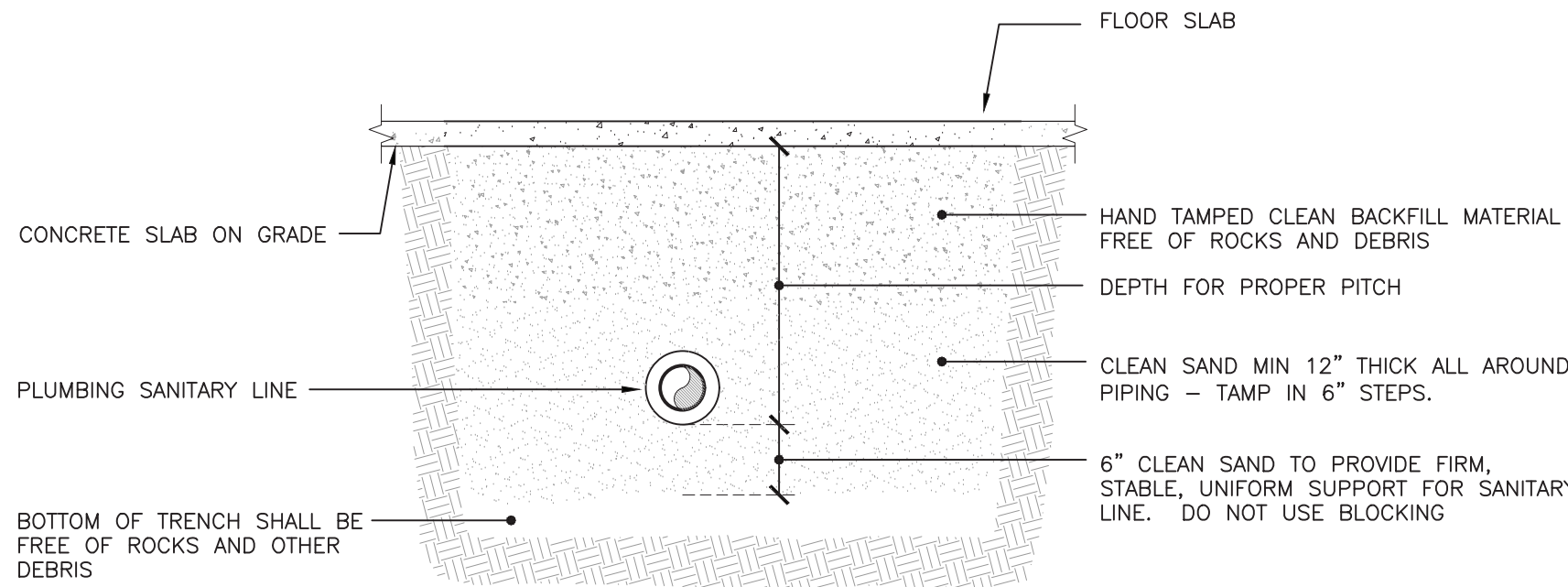
NOT TO SCALE



- NOTES:
- PROVIDE INSULATION SHIELD OR PIPE SADDLE BASED ON THE PIPING SYSTEM AND PIPE SIZE AS INDICATED IN THE SPECIFICATIONS.
 - TRAPEZE TYPE HANGER SHALL BE USED FOR A MAXIMUM 1,000 LB UNIFORM LOAD.
 - ELIMINATE PIPE ROLLERS AND ROLLER CHAIRS AT ANCHOR POINTS

TRAPEZE TYPE HANGER INSTALLATION DETAIL

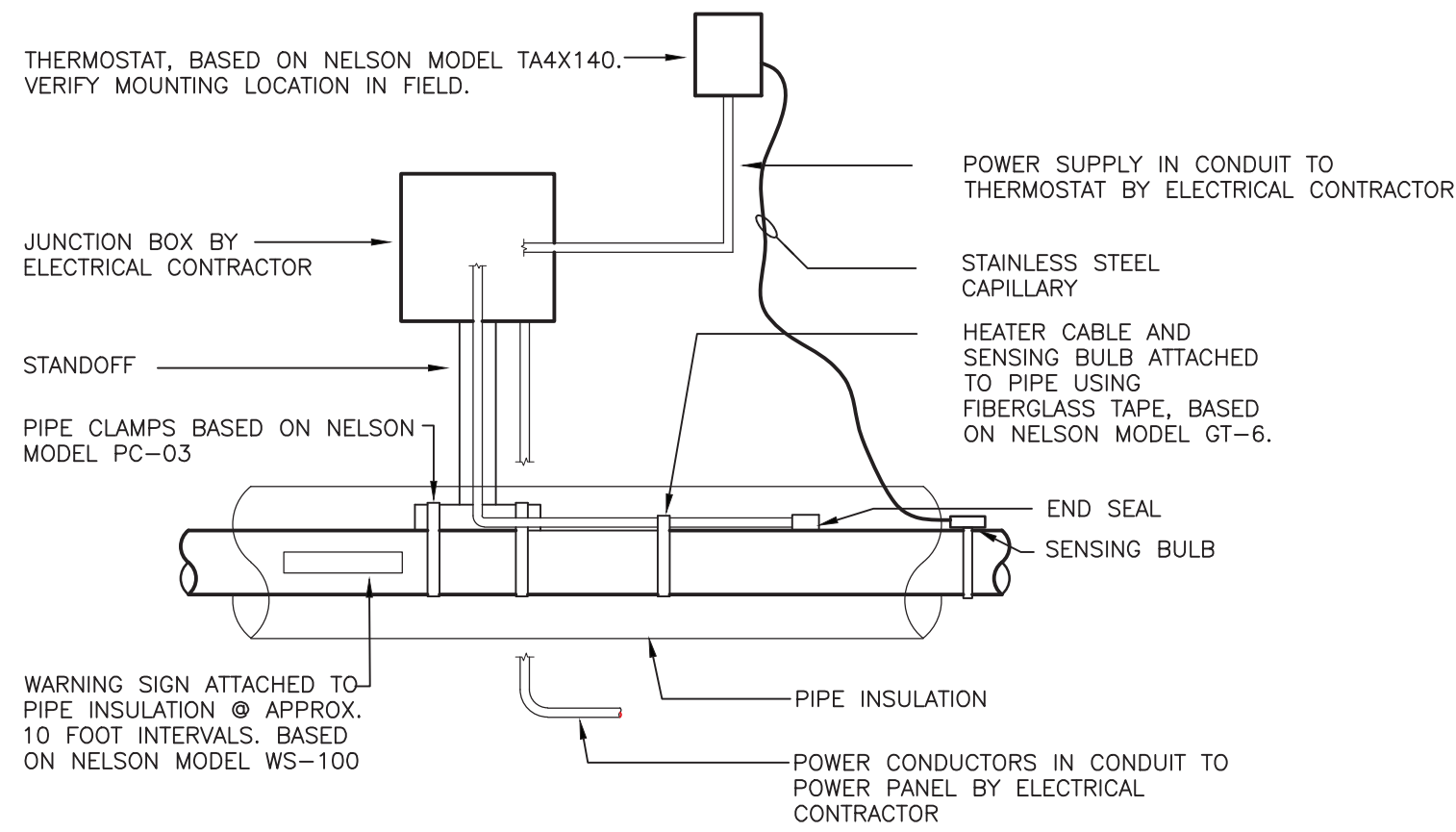
NOT TO SCALE



- NOTES:
- ALL TRENCHING, EXCAVATION AND BACKFILL SHALL BE BY GENERAL CONTRACTOR.
 - WHERE SANITARY PIPING IS TO BE ROUTED BELOW EXISTING FLOOR SLAB, THE GENERAL CONTRACTOR SHALL SAW CUT FLOOR SLAB AND PATCH AS REQUIRED. PLUMBING CONTRACTOR TO COORDINATE.

TYPICAL SANITARY LINE BELOW SLAB DETAIL

NOT TO SCALE



- NOTES:
- FREEZE PROTECTION ELECTRIC HEAT TRACING FOR ALL SANITARY PUMP PIPING EXPOSED TO AMBIENT CONDITIONS OUTSIDE BREWERY SHALL BE BASED ON NELSON TYPE CLT3 SELF-REGULATING HEATER CABLE. HEATER CABLE PERFORMANCE SHALL BE 3 WATTS PER FOOT AT 120V/1Ø. SYSTEM SHALL BE UL LISTED.
 - PROVIDE NELSON MODEL PLT-LPM CONNECTION KIT. CONNECTION KIT TO BE INSTALLED BY ELECTRICAL CONTRACTOR. HEATER CABLE, WARNING SIGNS, AND THERMOSTAT SENSING BULB SHALL BE ATTACHED TO PIPE BY ELECTRICAL CONTRACTOR.
 - HEAT TRACING CABLE BASED ON FREEZE PROTECTION TO MAINTAIN TEMPERATURE OF 40°F AT -20°F AMBIENT TEMPERATURE.
 - INSTALL CABLE IN ACCORDANCE WITH MANUFACTURER'S RECOMMENDATIONS.
 - INSTALL ALUMINUM FOIL TAPE CONTINUOUSLY ALONG ENTIRE CABLE LENGTH (ABOVE AND BELOW CABLE). TAPE BASED ON NELSON AT-50.

HEAT TRACE DETAIL

NOT TO SCALE

Date 10/15/21
Checked SZ
Drawn BH/DC/KC
SCOTT P. ZIEGLER
The LICENSED PROFESSIONAL ENGINEER New York License No. 091035

Revisions:
1 PERMIT SET 10/15/21

UNAUTHORIZED ALTERATIONS OR ADDITIONS TO THIS DOCUMENT IS A VIOLATION OF SECTION 7209 OF THE NEW YORK STATE EDUCATION LAW. THESE DOCUMENTS REMAIN THE EXCLUSIVE PROPERTY OF THE ENGINEER, AND MAY NOT BE USED FOR ANY PURPOSE WHATSOEVER WITHOUT THE WRITTEN CONSENT OF THE ENGINEER.

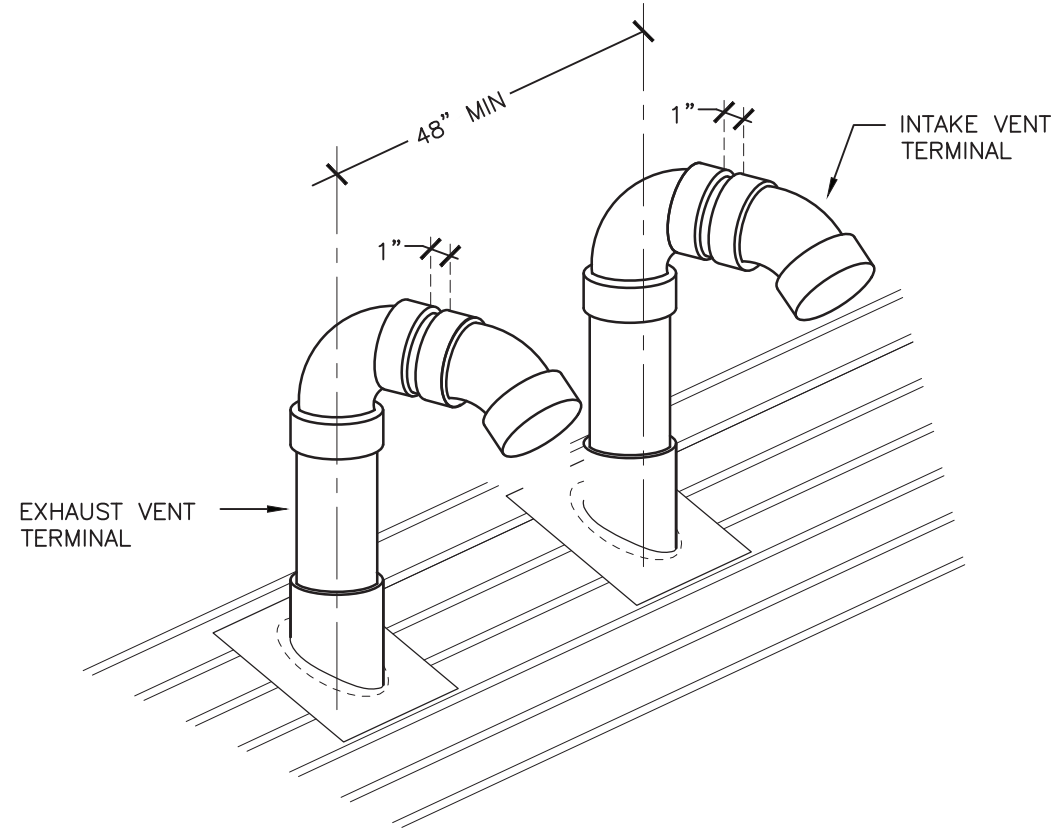
GERARD ASSOCIATES P.C.
CONSULTING ENGINEERS
228 MAIN STREET, GOSHEN, NY 10924
info@gerardassociates.com www.gerardassociates.com
GA21013

LAN ASSOCIATES
engineering • planning • architecture • surveying
252 MAIN STREET, GOSHEN, NEW YORK 10924 (845)619-0350

PLUMBING: DETAILS
ASPIRE BREWING TAP ROOM & BREWERY
FOR SONNY PATIL BREWING COMPANY, INC.
400/600 NORTH GALLERIA DRIVE LOWER LEVEL
MIDDLETOWN, NY 10941

Job No. 4.1552.01
File No. 4.155201 P602

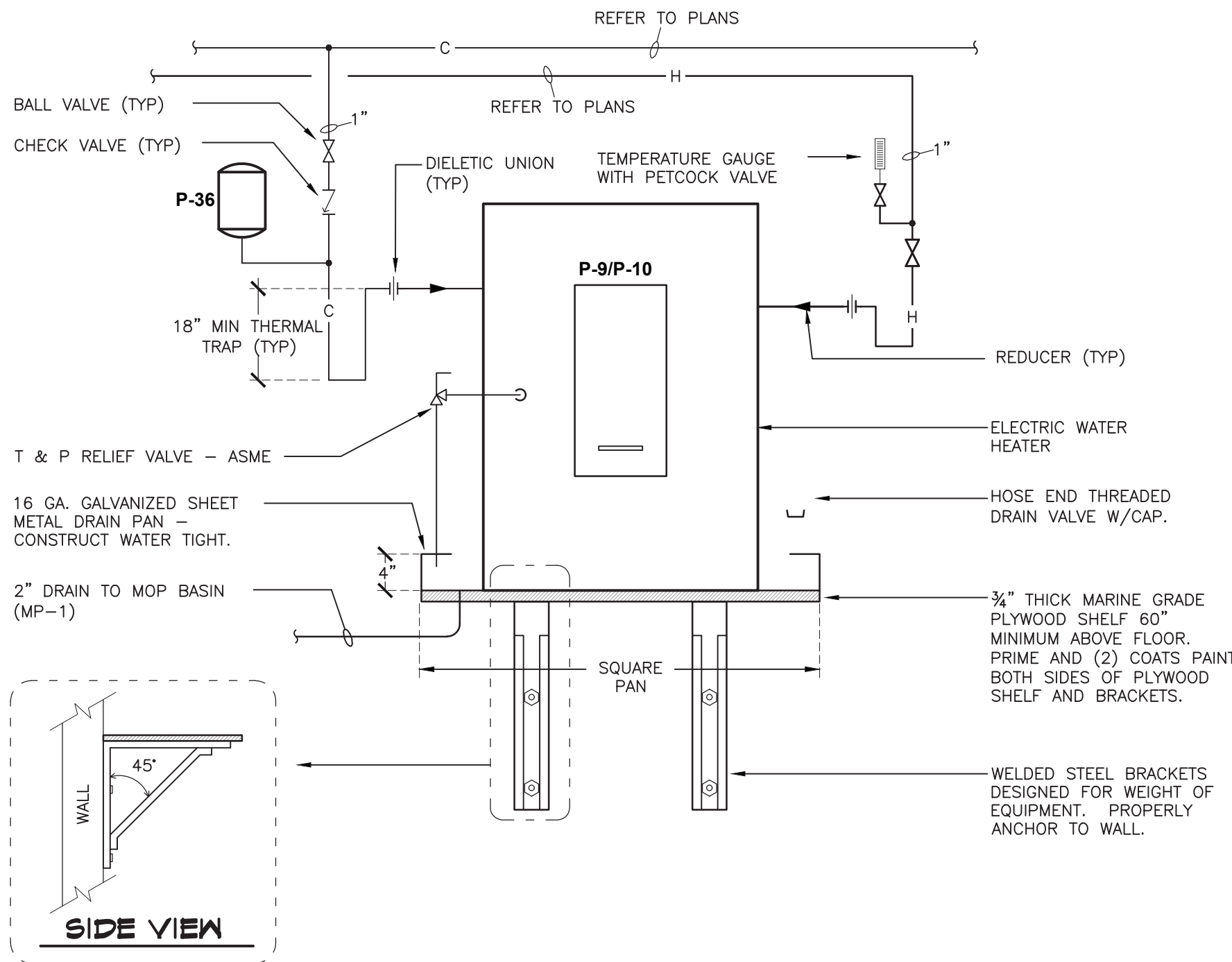
P6.02



- NOTES:
1. THE AIR INTAKE TERMINATION AND THE EXHAUST VENT TERMINATION SHALL EXTEND ABOVE ANTICIPATED SNOW LEVEL OR AT LEAST 24\"/>

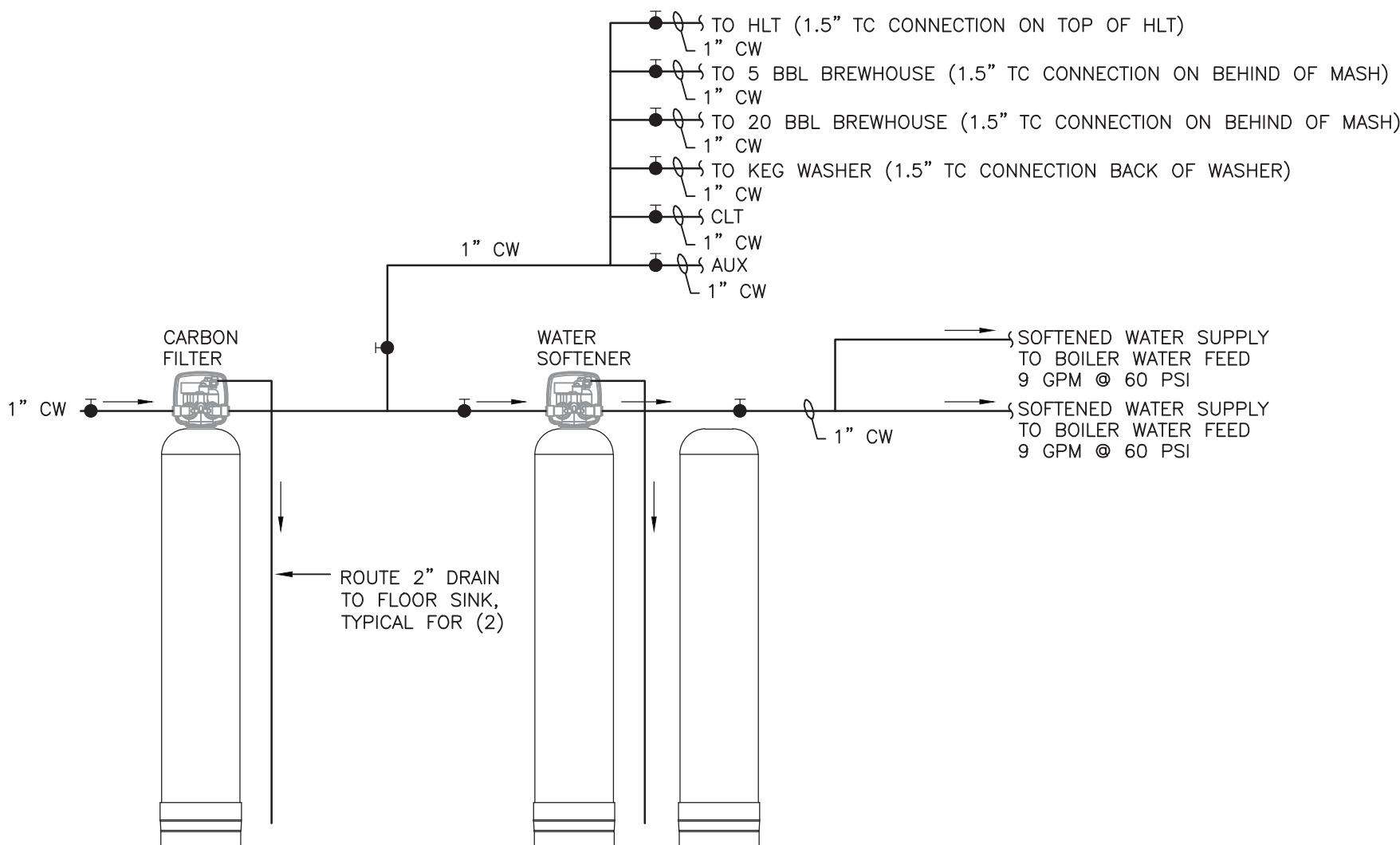
FLUE PIPING DETAIL

1
P6.03
NOT TO SCALE



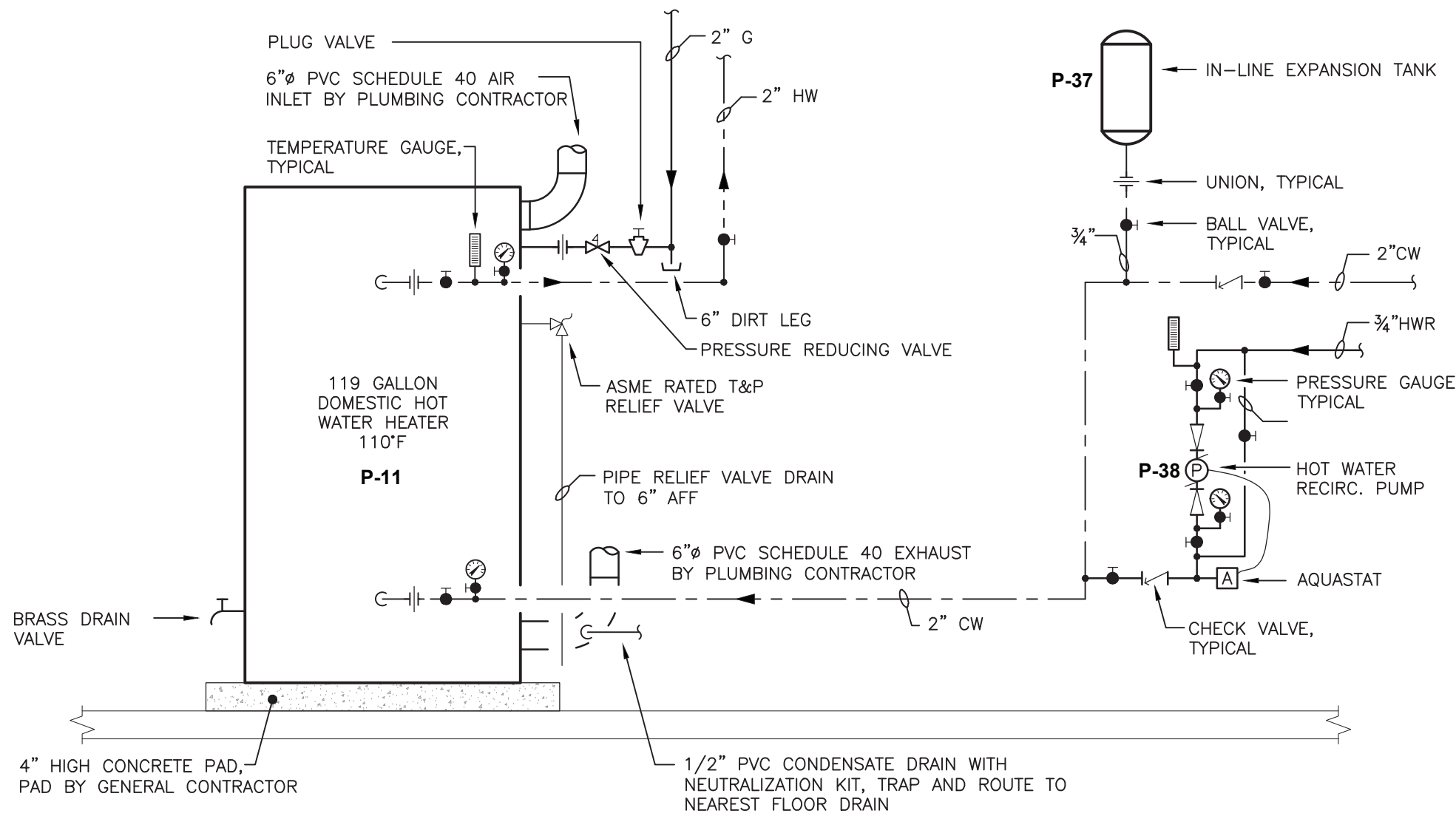
ELECTRIC WATER HEATER (WH-1) DETAIL

2
P6.03
NOT TO SCALE



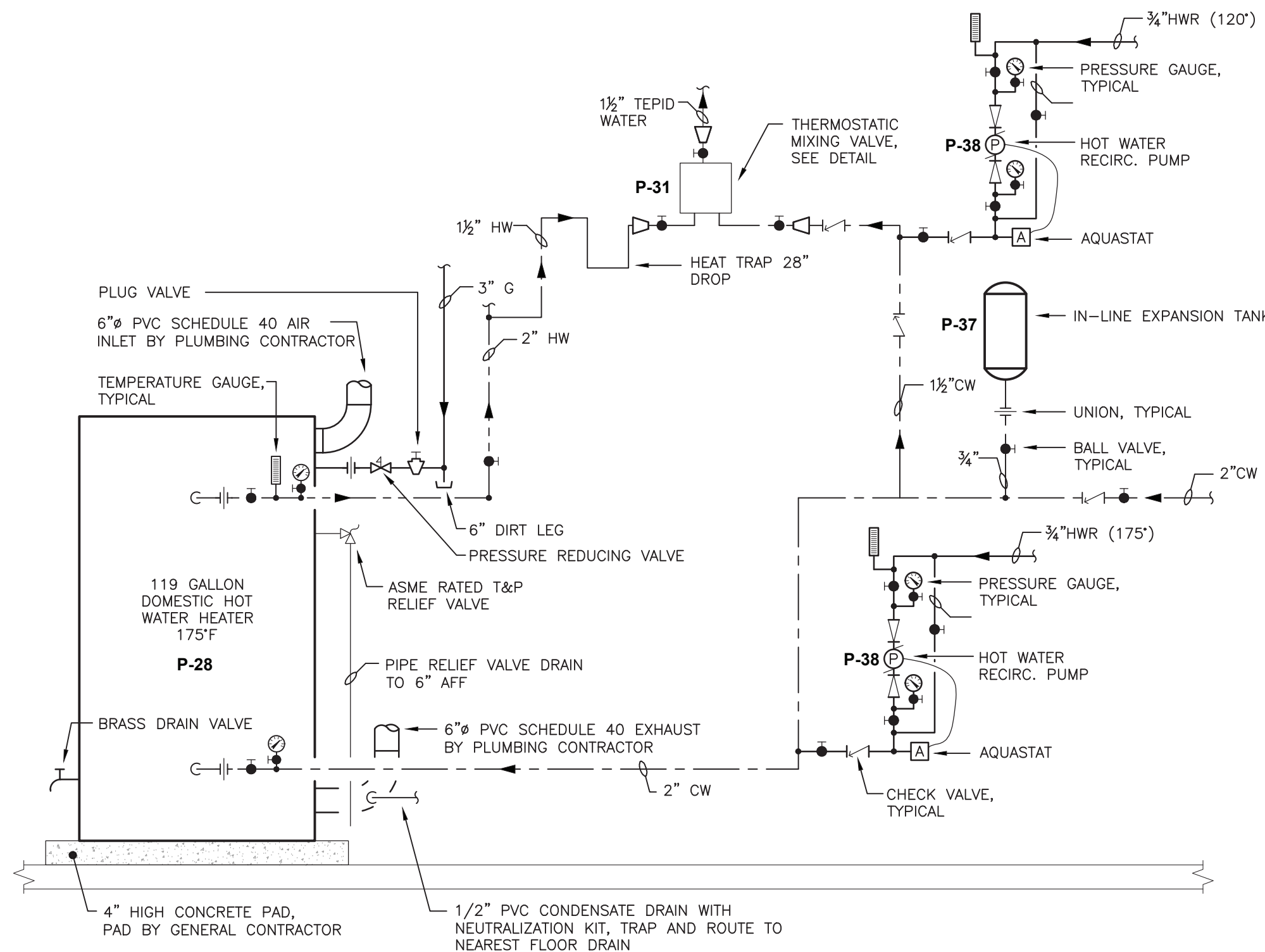
WATER FILTRATION DETAIL

2
P6.03
NOT TO SCALE



DOMESTIC HOT WATER HEATER DETAIL (P-11)

4
P6.03
NOT TO SCALE



DOMESTIC HOT WATER HEATER DETAIL (P-28)

5
P6.03
NOT TO SCALE

Date	10/15/21
Checked	SZ
Drawn	BH/DC/KC
SCOTT P. ZIEGLER	
THE LICENSED PROFESSIONAL ENGINEER New York License No. 091035	

Revisions:	
1 PERMIT SET 10/15/21	
UNAUTHORIZED ALTERATIONS OR ADDITIONS TO THIS DOCUMENT IS A VIOLATION OF SECTION 7209 OF THE NEW YORK STATE EDUCATION LAW. THESE DOCUMENTS REMAIN THE EXCLUSIVE PROPERTY OF THE ENGINEER, AND MAY NOT BE USED FOR ANY PURPOSE WHATSOEVER WITHOUT THE WRITTEN CONSENT OF THE ENGINEER.	

GERARD ASSOCIATES P.C.
CONSULTING ENGINEERS P.C.
228 MAIN STREET, GOSHEN, NY 10924
info@gerardassociates.com www.gerardassociates.com
GA21013

LAN ASSOCIATES
engineering • planning • architecture • surveying
252 MAIN STREET, GOSHEN, NEW YORK 10924 (845)619-0350

DETAILS
ASPIRE BREWING TAP ROOM & BREWERY
FOR SONNY PATEL BREWING COMPANY, INC.
400/600 NORTH GALLERIA DRIVE LOWER LEVEL
MIDDLETOWN, NY 10941

Job No. 4.1552.01
File No. 4155201 P603

P6.03

																																																																																																																																																																																																																																																																																																																																																																																																																																																																																																																																																																																																																																																																																																																																																																																																																																																																																																																																																																																																																																																																																																																																																																																																																																																																																																																																																																																																																					</
--	--	--	--	--	--	--	--	--	--	--	--	--	--	--	--	--	--	--	--	--	--	--	--	--	--	--	--	--	--	--	--	--	--	--	--	--	--	--	--	--	--	--	--	--	--	--	--	--	--	--	--	--	--	--	--	--	--	--	--	--	--	--	--	--	--	--	--	--	--	--	--	--	--	--	--	--	--	--	--	--	--	--	--	--	--	--	--	--	--	--	--	--	--	--	--	--	--	--	--	--	--	--	--	--	--	--	--	--	--	--	--	--	--	--	--	--	--	--	--	--	--	--	--	--	--	--	--	--	--	--	--	--	--	--	--	--	--	--	--	--	--	--	--	--	--	--	--	--	--	--	--	--	--	--	--	--	--	--	--	--	--	--	--	--	--	--	--	--	--	--	--	--	--	--	--	--	--	--	--	--	--	--	--	--	--	--	--	--	--	--	--	--	--	--	--	--	--	--	--	--	--	--	--	--	--	--	--	--	--	--	--	--	--	--	--	--	--	--	--	--	--	--	--	--	--	--	--	--	--	--	--	--	--	--	--	--	--	--	--	--	--	--	--	--	--	--	--	--	--	--	--	--	--	--	--	--	--	--	--	--	--	--	--	--	--	--	--	--	--	--	--	--	--	--	--	--	--	--	--	--	--	--	--	--	--	--	--	--	--	--	--	--	--	--	--	--	--	--	--	--	--	--	--	--	--	--	--	--	--	--	--	--	--	--	--	--	--	--	--	--	--	--	--	--	--	--	--	--	--	--	--	--	--	--	--	--	--	--	--	--	--	--	--	--	--	--	--	--	--	--	--	--	--	--	--	--	--	--	--	--	--	--	--	--	--	--	--	--	--	--	--	--	--	--	--	--	--	--	--	--	--	--	--	--	--	--	--	--	--	--	--	--	--	--	--	--	--	--	--	--	--	--	--	--	--	--	--	--	--	--	--	--	--	--	--	--	--	--	--	--	--	--	--	--	--	--	--	--	--	--	--	--	--	--	--	--	--	--	--	--	--	--	--	--	--	--	--	--	--	--	--	--	--	--	--	--	--	--	--	--	--	--	--	--	--	--	--	--	--	--	--	--	--	--	--	--	--	--	--	--	--	--	--	--	--	--	--	--	--	--	--	--	--	--	--	--	--	--	--	--	--	--	--	--	--	--	--	--	--	--	--	--	--	--	--	--	--	--	--	--	--	--	--	--	--	--	--	--	--	--	--	--	--	--	--	--	--	--	--	--	--	--	--	--	--	--	--	--	--	--	--	--	--	--	--	--	--	--	--	--	--	--	--	--	--	--	--	--	--	--	--	--	--	--	--	--	--	--	--	--	--	--	--	--	--	--	--	--	--	--	--	--	--	--	--	--	--	--	--	--	--	--	--	--	--	--	--	--	--	--	--	--	--	--	--	--	--	--	--	--	--	--	--	--	--	--	--	--	--	--	--	--	--	--	--	--	--	--	--	--	--	--	--	--	--	--	--	--	--	--	--	--	--	--	--	--	--	--	--	--	--	--	--	--	--	--	--	--	--	--	--	--	--	--	--	--	--	--	--	--	--	--	--	--	--	--	--	--	--	--	--	--	--	--	--	--	--	--	--	--	--	--	--	--	--	--	--	--	--	--	--	--	--	--	--	--	--	--	--	--	--	--	--	--	--	--	--	--	--	--	--	--	--	--	--	--	--	--	--	--	--	--	--	--	--	--	--	--	--	--	--	--	--	--	--	--	--	--	--	--	--	--	--	--	--	--	--	--	--	--	--	--	--	--	--	--	--	--	--	--	--	--	--	--	--	--	--	--	--	--	--	--	--	--	--	--	--	--	--	--	--	--	--	--	--	--	--	--	--	--	--	--	--	--	--	--	--	--	--	--	--	--	--	--	--	--	--	--	--	--	--	--	--	--	--	--	--	--	--	--	--	--	--	--	--	--	--	--	--	--	--	--	--	--	--	--	--	--	--	--	--	--	--	--	--	--	--	--	--	--	--	--	--	--	--	--	--	--	--	--	--	--	--	--	--	--	--	--	--	--	--	--	--	--	--	--	--	--	--	--	--	--	--	--	--	--	--	--	--	--	--	--	--	--	--	--	--	--	--	--	--	--	--	--	--	--	--	--	--	--	--	--	--	--	--	--	--	--	--	--	--	--	--	--	--	--	--	--	--	--	--	--	--	--	--	--	--	--	--	--	--	--	--	--	--	--	--	--	--	--	--	--	--	--	--	--	--	--	--	--	--	--	--	--	--	--	--	--	--	--	--	--	--	--	--	--	--	--	--	--	--	--	--	--	--	--	--	--	--	--	--	--	--	--	--	--	--	--	--	--	--	--	--	--	--	--	--	--	--	--	--	--	--	--	--	--	--	--	--	--	--	--	--	--	--	--	--	--	--	--	--	--	--	--	--	--	--	--	--	--	--	--	--	--	--	--	--	--	--	--	--	--	--	--	--	--	--	--	--	--	--	--	--	--	--	--	--	--	--	--	--	--	--	--	--	--	--	--	--	--	--	--	--	--	--	--	--	--	--	--	--	--	--	--	--	--	--	--	--	--	--	--	--	--	--	--	--	--	--	--	--	--	--	--	--	--	--	--	--	--	--	--	--	--	--	--	--	--	--	--	--	--	--	--	--	--	--	--	--	--	--	--	--	--	--	--	--	--	--	--	--	--	--	--	--	--	--	--	--	--	--	--	--	--	--	--	--	--	--	--	--	--	--	--	--	--	--	--	--	--	--	--	--	--	--	--	--	--	--	--	--	--	--	--	--	--	--	--	--	--	--	--	--	--	--	--	--	--	--	--	--	--	--	--	--	--	--	--	--	--	--	--	--	--	--	--	--	--	--	--	--	--	--	--	--	--	--	--	--	--	--	--	--	--	--	--	--	--	--	--	--	--	--	--	--	--	--	--	--	--	--	--	--	--	--	--	--	--	--	--	--	--	--	--	--	--	--	--	--	--	--	--	--	--	--	--	--	--	--	--	--	--	--	--	--	--	--	--	--	--	--	--	--	--	--	--	--	--	--	--	--	--	--	--	--	--	--	--	--	--	--	--	--	--	--	--	--	--	--	--	--	--	--	--	--	--	--	--	--	--	--	--	--	--	----

Date10/15/21

CheckedSZ

DrawnBH/DC/KC

SCOTT P. ZIEGLER

The LICENSED PROFESSIONAL ENGINEER New York License No. 091035

Revisions:

1101521

PERMIT SET

UNAUTHORIZED ALTERATIONS OR ADDITIONS TO THIS DOCUMENT IS A VIOLATION OF SECTION 7209 OF THE NEW YORK STATE EDUCATION LAW. THESE DOCUMENTS REMAIN THE EXCLUSIVE PROPERTY OF THE ENGINEER, AND MAY NOT BE USED FOR ANY PURPOSE WHATSOEVER WITHOUT THE WRITTEN CONSENT OF THE ENGINEER.

GERARD ASSOCIATES

CONSULTING ENGINEERS P.C.

228 MAIN STREET, GOSHEN, NY 10924

info@gerardassociates.com www.gerardassociates.com

GA21013

LAN ASSOCIATES

engineering • planning • architecture • surveying

252 MAIN STREET, GOSHEN, NEW YORK 10924 (845)618-0350

PLUMBING: EQUIPMENT SCHEDULES

ASPIRE BREWING TAP ROOM & BREWERY

FOR SONNY PATEL BREWING COMPANY, INC.

400/600 NORTH GALLERIA DRIVE LOWER LEVEL

MIDDLETOWN, NY 10941

Job No. 4.1552.01

File No. 4155201 P703

P7.03