


ABBREVIATIONS	
HWRP	HOT WATER RETURN PUMP
HWS	HOT WATER SUPPLY
HX	HEAT EXCHANGE
ID	INSIDE DIAMETER
IEF	IN-LINE EXHAUST FAN
IN	INCHES
IN WG	INCHES OF WATER, GAUGE (PRESSURE)
IP	INDIRECT WASTE
JW	JOCKEY PUMP
KEF	KITCHEN EXHAUST FAN
KVA	KILOVOLT AMPERE
KW	KILOWATT
KWH	KITCHEN WATER HEATER
L	LENGTH
LA	LABORATORY COMPRESSED AIR
LAV	LAVATORY
LBBS/HR	POUNDS PER HOUR
LF	LINEAR FEET
LG	LABORATORY GAS
LPC	LOW PRESSURE CONDENSATE
LPS	LOW PRESSURE STEAM
LV	LABORATORY VACUUM
MA	MEDICAL COMPRESSED AIR
MAGP	MASTER ALARM GAS PANEL
MAX	MAXIMUM
MBH	BTU PER HOUR (THOUSAND)
MECH	MECHANICAL
MFR	MANUFACTURER
MIN	MINIMUM
MPS	MEDIUM PRESSURE STEAM
MUAU	MAKE UP AIR UNIT
MV	MEDICAL VACUUM
N2	NITROGEN
N2O	NITROUS OXIDE
N.C.	NORMALLY CLOSED
N.O.	NORMALLY OPEN
N/A	NOT APPLICABLE
NIC	NOT IN CONTRACT
NTS	NOT TO SCALE
O	OXYGEN
OA	OUTSIDE AIR
OD	OUTSIDE DIAMETER
ORD	OVERFLOW ROOF DRAIN
OR	OVERFLOW RAIN LEADER
P	POLE
PH / Ø	PHASE
PRESS	PRESSURE
PRV	PRESSURE REDUCING VALVE
PSI	POUNDS PER SQUARE INCH
PVC	POLYVINYL CHLORIDE
QTY	QUANTITY
RD	ROOF DRAIN
REF	ROOF EXHAUST FAN
RM	ROOM
R	REVERSE
RPD/RPZ	REDUCED PRESSURE DEVICE
RPM	REVOLUTIONS PER MINUTE
RTU	ROOF TOP UNIT
RV	RADON VENT
RL	RAIN LEADER
S	SOIL
SAC	SHOP AIR COMPRESSOR
SCP	STEAM CONDENSATE PUMP
SEP	SEWAGE EJECTOR PUMP
SEP	STATIC PRESSURE
SP	SUMP PUMP
SPEC	SPECIFICATION
SQ	SQUARE
SS	SOIL/STACK
ST	STORM
STD	STANDARD
SWH	STEAM WATER HEATER
TAG	IDENTIFICATION OF EQUIPMENT
TEMP	TEMPERATURE
TMV	THERMOSTATIC MIXING VALVE
T	TRAP PRIMER
TW	TEMPERED WATER
TWR	TEMPERED WATER RETURN
TYP	TYPICAL
UH	UNIT HEATER
UR	URINAL
V	VENT
VAC	VACUUM
VEL	VELOCITY
VFC	VARIABLE FREQUENCY CONTROLLER
V	VERIFY IN FIELD
VOL	VOLUME
VTR	VENT THRU ROOF
W	WASTE
WC	WATER CLOSET
WG	WIREGUARD
WH	WALL HYDRANT (HOSE BIBB)
WHA	WATER HAMMER ARRESTER
WI	WIDTH
WP	WEATHERPROOF
WTG	WALL TRANSFER GRILLE
WV	WASTE AND VENT COMBINATION

FITTINGS AND VALVES	
	BALL VALVE
	DIRECTION OF FLUID FLOW
	GATE VALVE
	BUTTERFLY VALVE
	CALIBRATED BALANCING VALVE
	GAS COCK
	CHECK VALVE
	PRESSURE REDUCING VALVE
	THERMOSTATIC MIXING VALVE
	SOLENOID VALVE
	DRAIN VALVE WITH HOSE END, CAP & CHAIN OR HOSE BIBB
	WALL HYDRANT
	PIPE DROP WITH VALVE
	TAKEOFF FROM TOP OF MAIN PIPE
	TAKEOFF FROM BOTTOM OF MAIN PIPE
	UNION
	PIPE ELBOW UP OR PIPE TEE UP
	PIPE ELBOW DOWN
	PIPE TEE DOWN
	WALL CLEANOUT OR BLIND FLANGE
	FLOOR CLEANOUT
	"P" TRAP
	STRAINER OR STRAINER WITH BLOW-DOWN VALVE HOSE END, CAP AND CHAIN
	BACKFLOW PREVENTER (2" AND SMALLER)
	BACKFLOW PREVENTER (2 1/2" AND LARGER)
	PUMP
	WATER HAMMER ARRESTOR
	2-WAY CONTROL VALVE
	3-WAY CONTROL VALVE
	PIPE CAP OR CAPPED END OF PIPE
	STEEL PENETRATION / PIPE SLEEVE
	PIPE GUIDES
	AIR VENT
	PRESSURE RELIEF SAFETY VALVE
	AQUASTAT
	TEMPERATURE SENSOR WITH SEPARABLE SOCKET IN IMMERSIBLE WELL
	TEMPERATURE GAUGE WITH SEPARABLE SOCKET IN IMMERSIBLE WELL
	THERMOMETER WITH SEPARABLE SOCKET IN IMMERSIBLE WELL
	PRESSURE GAUGE
	FLEXIBLE CONNECTOR




H 2
 M architects
 +
 engineers

3 Lear Jet Lane, Suite 205
 Latham, NY 12110
 518.765.5105 • www.h2m.com

[illegible]

**CARMEL FIRE
DEPARTMENT INC.**

ADDITION/RENOVATION



A Maltese cross logo for the Carmel Fire Department. The top arm of the cross contains the text "CARMEL NY". The left arm contains "F." and the right arm contains "D.". The center of the cross features a circular emblem with an American flag, a fire hydrant, and a fire engine. Below the cross, the text "EST. 1915" is displayed.

**94 GLENEIDA AVE,
CARMEL HAMLET NY, 10512**

STATUS	BID SET
--------	---------

DRAWING No. **P 001**

CONSULTANTS:

MEP: Kenneth A. Hipsky, P.E., LEED AP
243 Godfrey Road
Mystic, CT 06355
(860)-310-9827

[illegible]

*ALTERATION OF THIS DOCUMENT EXCEPT BY A LICENSED PROFESSIONAL IS ILLEGAL.			
DESIGNED BY: KAH	DRAWN BY: ALL	CHECKED BY:	REVIEWED BY: g
PROJECT No: CARM1902	DATE: 3/22/2021	SCALE: AS SHOWN	

CLIENT

**CARMEL FIRE
DEPARTMENT INC.**

ADDITION/RENOVATION



94 GLENEIDA AVE,
CARMEL HAMLET NY, 10512

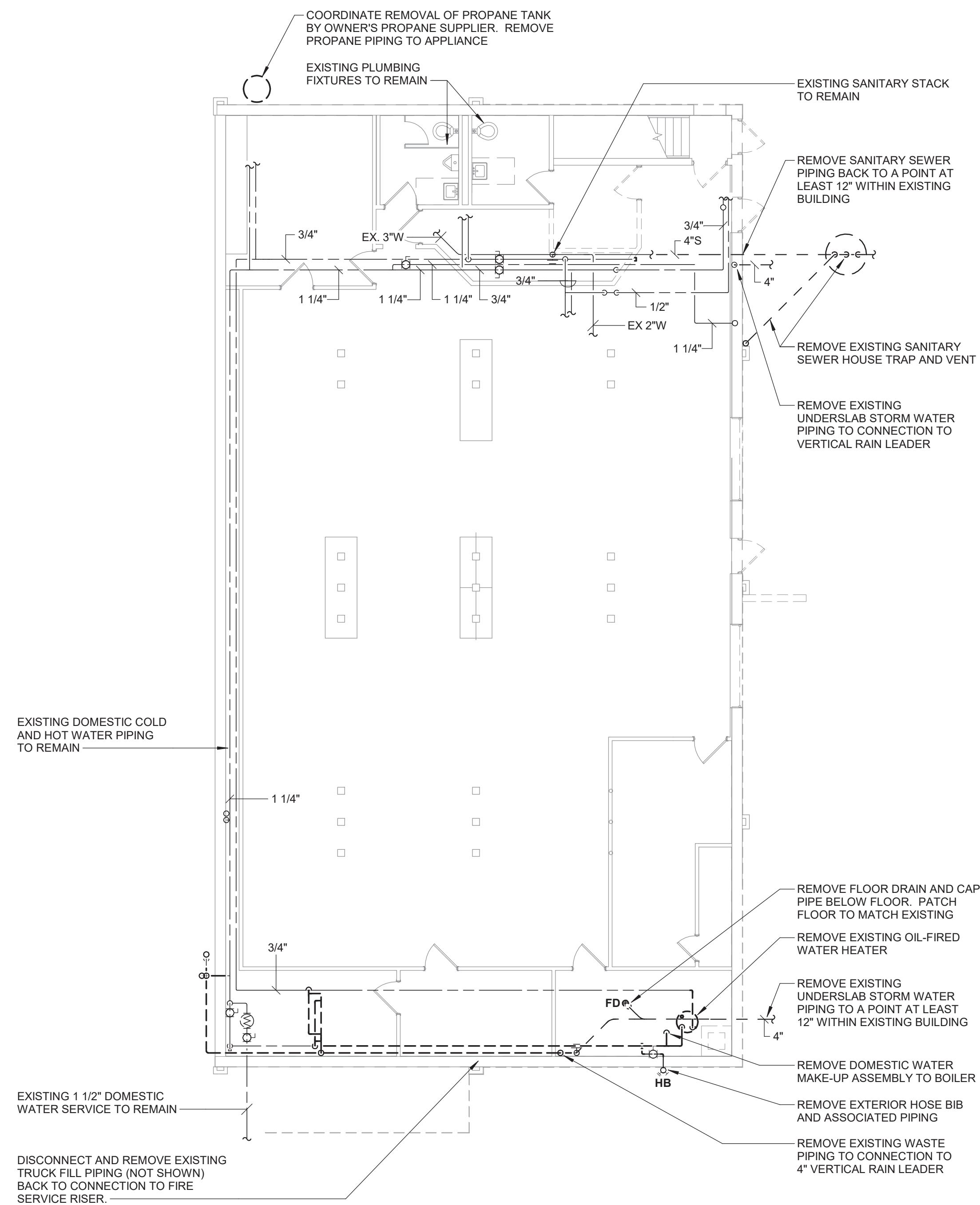
CONTRACT	<p align="center">CONTRACT G</p> <p align="center">GENERAL CONSTRUCTION</p>
----------	---

STATUS	BID SET
--------	---------

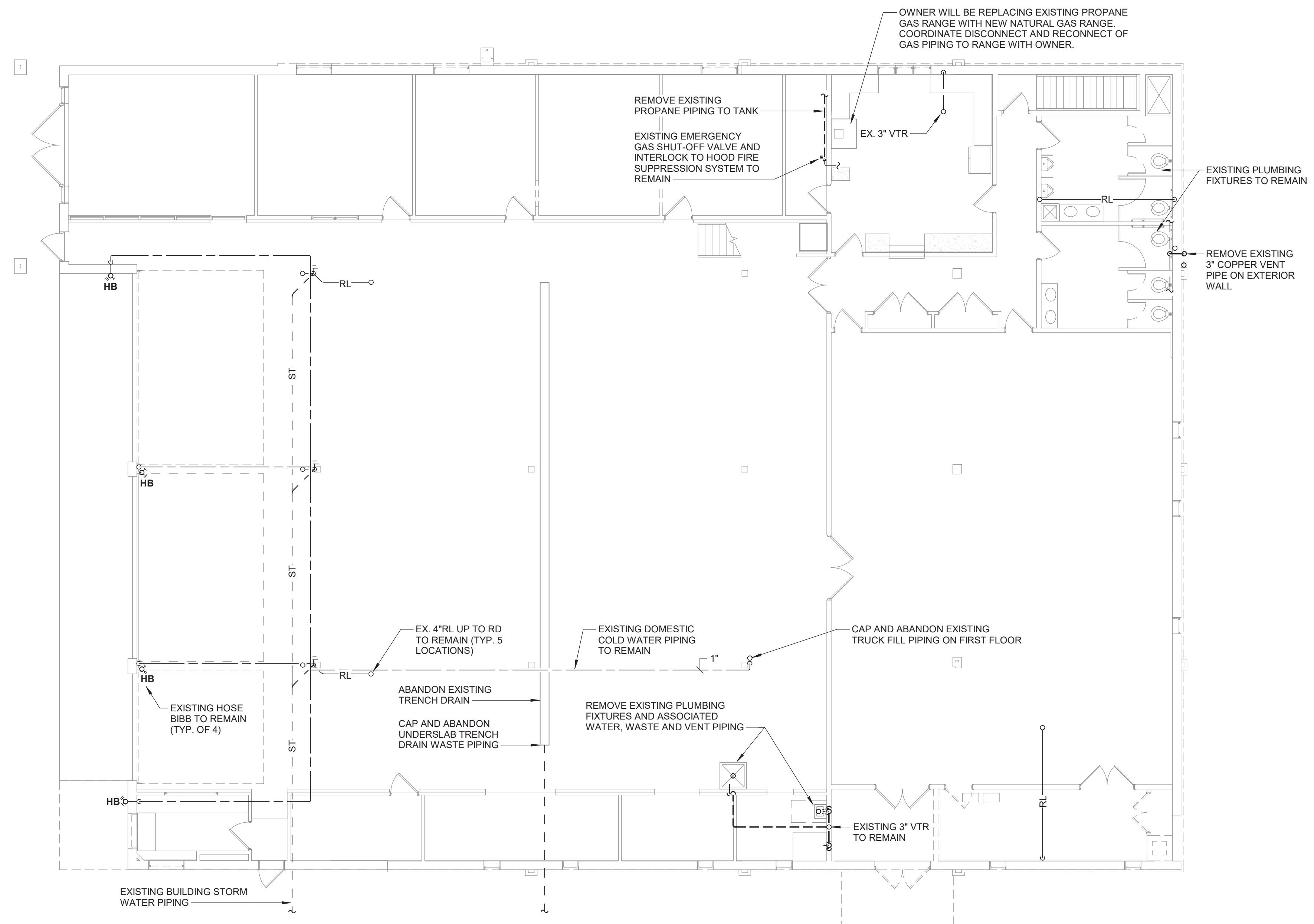
SHEET TITLE

**PLUMBING DEMOLITION
PLANS**

DRAWING No. **PD 101**



1 FIRST FLOOR PLUMBING DEMOLITION PLAN
1/8" = 1'-0"



② SECOND FLOOR PLUMBING DEMOLITION PLAN
1/8" = 1'-0"

3 Lear Jet Lane, Suite 205
Latham, NY 12110
518.765.5105 • www.h2m.com

MEP: Kenneth A. Hipsky, P.E., LEED AP
243 Godfrey Road
Mystic, CT 06355
(860)-310-9827

[illegible]

ALTERATION OF THIS DOCUMENT EXCEPT BY A LICENSED PROFESSIONAL IS ILLEGAL.			
DESIGNED BY: KAH	DRAWN BY: ALL	CHECKED BY:	REVIEWED BY: G
PROJECT No: CARM1902	DATE: 3/22/2021	SCALE: AS SHOWN	

**CARMEL FIRE
DEPARTMENT INC.**

ADDITION/RENOVATION



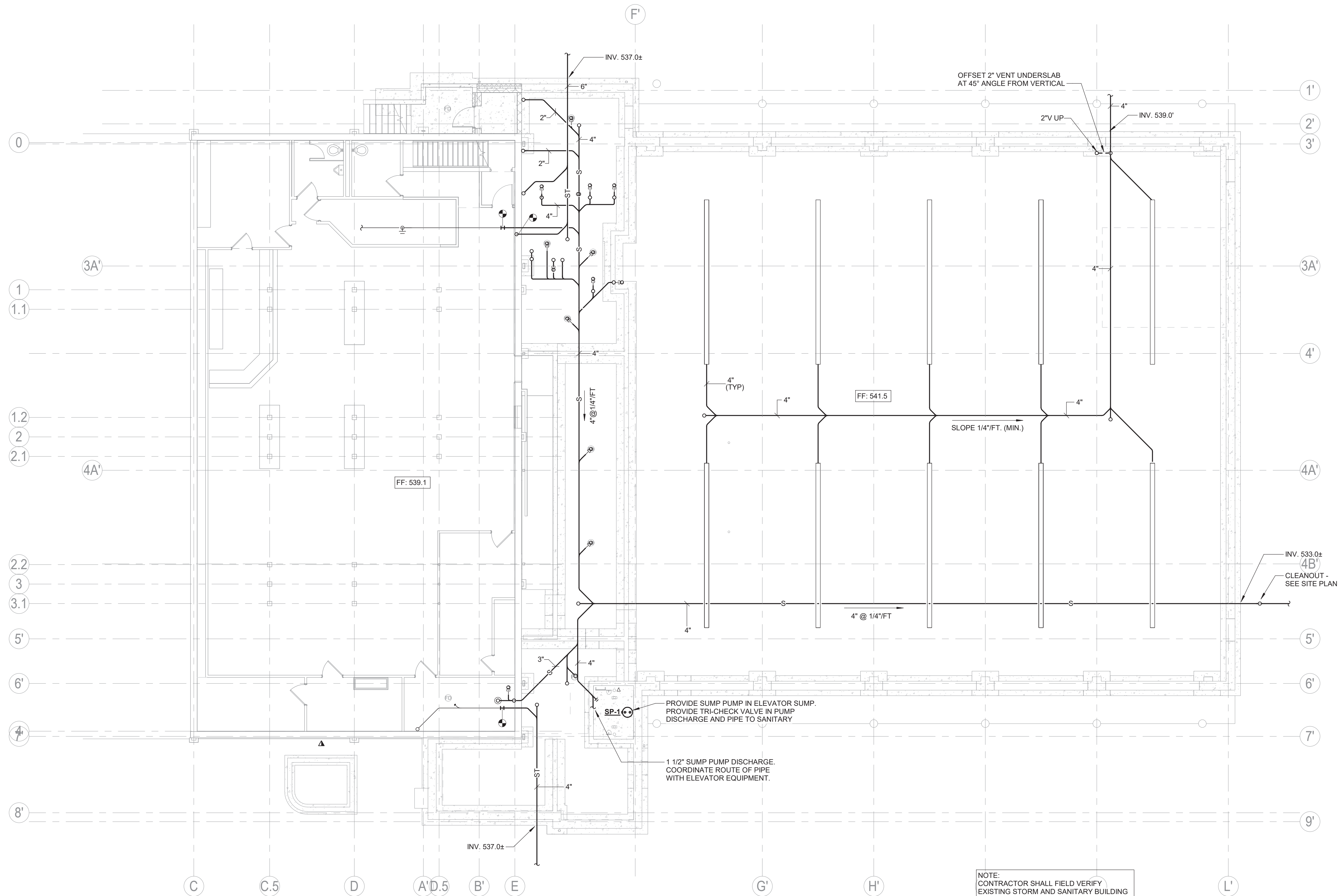
94 GLENEIDA AVE,
CARMEL HAMLET NY, 10512

CONTRACT G
GENERAL CONSTRUCTION

BID SET

PLUMBING UNDERSLAB PLAN

P 100



NOTE:
CONTRACTOR SHALL FIELD VERIFY
EXISTING STORM AND SANITARY BUILDING
INVERTS PRIOR TO CONSTRUCTION.

1 PLUMBING UNDERSLAB PLAN
1/8" = 1'-0"

3 Lear Jet Lane, Suite 205
Latham, NY 12110
518.765.5105 • www.h2m.com

CONSULTANTS:
MEP: Kenneth A. Hipsky, P.E., LEED AP
243 Godfrey Road
Mystic, CT 06355
(860)-310-9827


MARK	DATE	DESCRIPTION

ALTERATION OF THIS DOCUMENT EXCEPT BY A LICENSED PROFESSIONAL IS ILLEGAL			
DESIGNED BY: KAH	DRAWN BY: ALL	CHECKED BY:	REVIEWED BY:
PROJECT No: CARM1902	DATE: 3/22/2021	SCALE: AS SHOWN	

CLIENT

CARMEL FIRE
DEPARTMENT INC.

ADDITION/RENOVATION



94 GLENEIDA AVE,
CARMEL HAMLET NY, 10512

CONTRACT

CONTRACT G
GENERAL CONSTRUCTION

STATUS

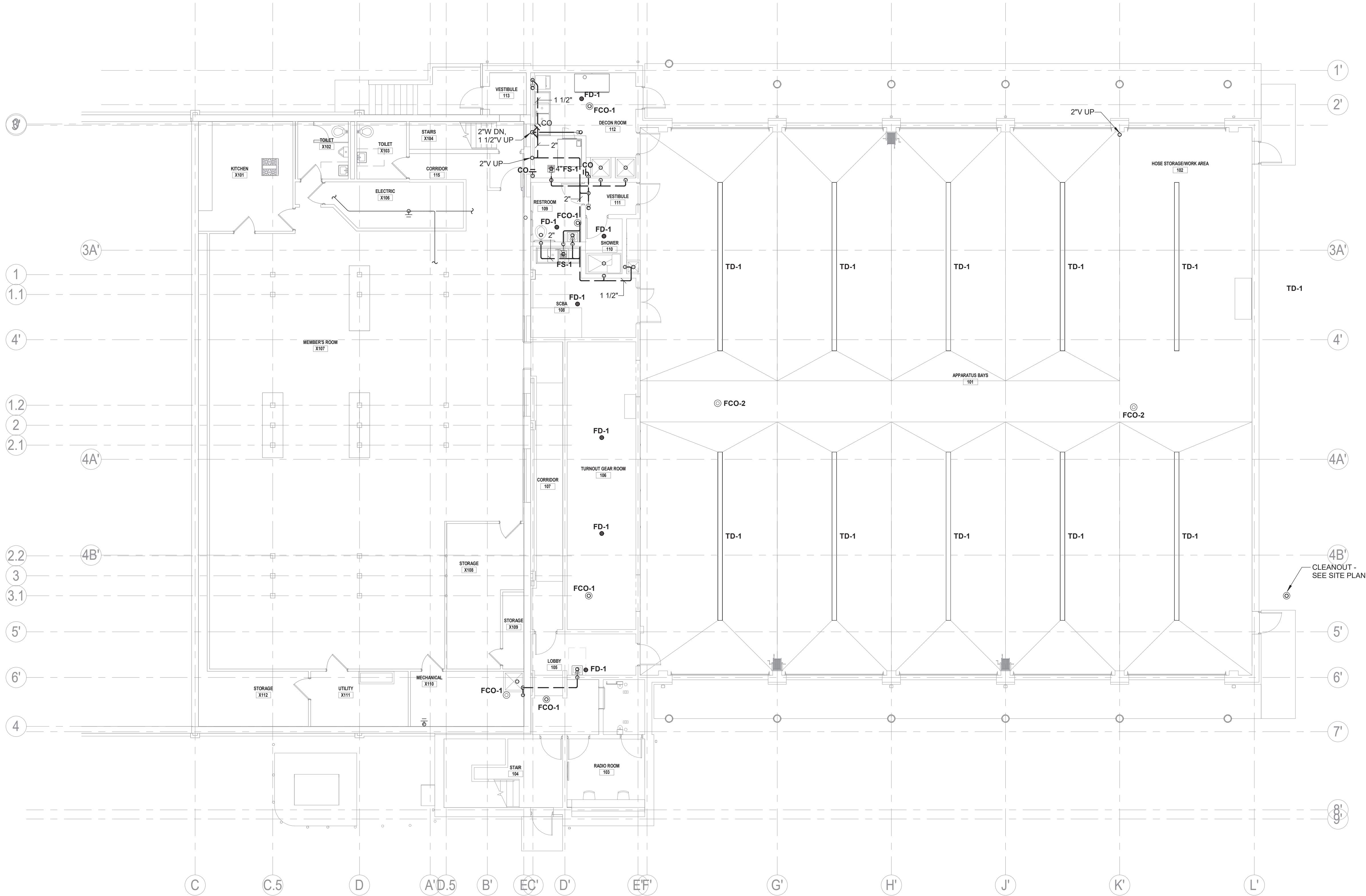
BID SET

SHEET TITLE

FIRST FLOOR DRAINAGE
PLAN

DRAWING No.

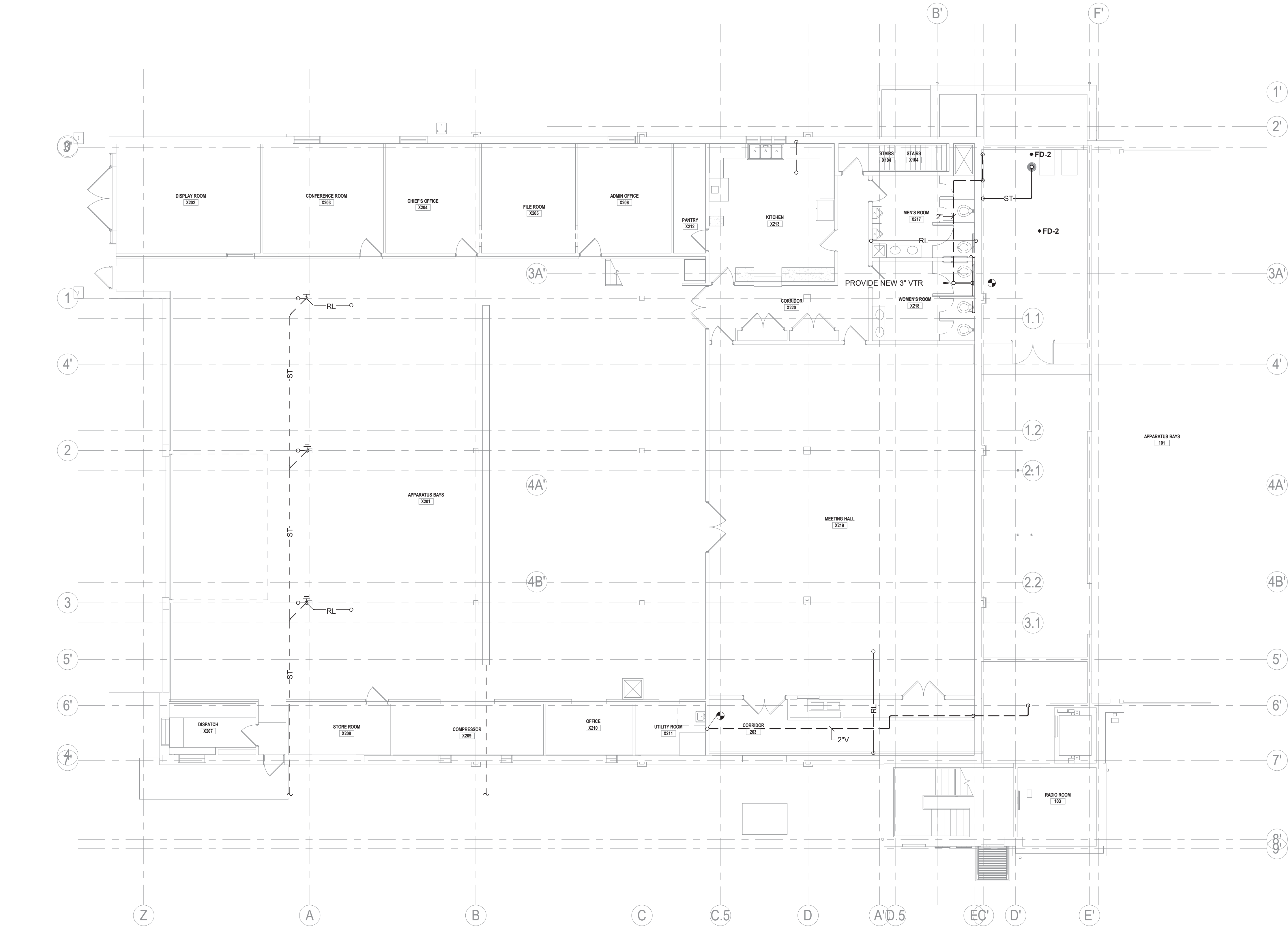
P 101



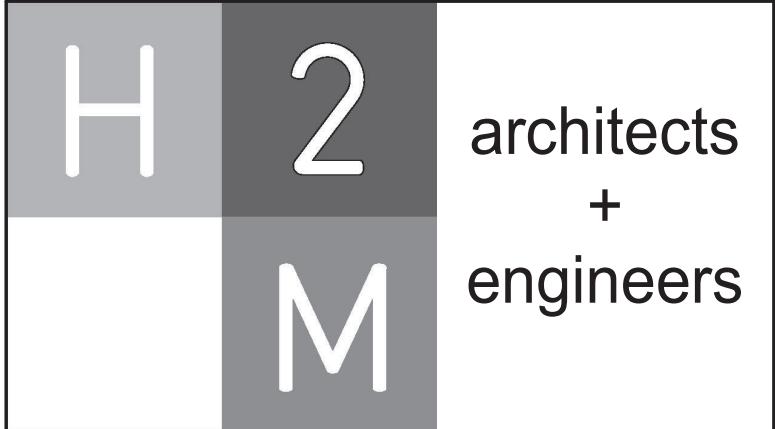
1 FIRST FLOOR DRAINAGE PLAN
1/8" = 1'-0"

BIM 360://20-265 Carmel NY Fire Dept./MEP_20-265_CARMEL NY FIRE DEPT.rvt

3/22/2021 3:37:48 PM



1 SECOND FLOOR DRAINAGE PLAN
1/8" = 1'-0"



3 Lear Jet Lane, Suite 205
Latham, NY 12110
518.765.5105 • www.h2m.com

CONSULTANTS:
MEP: Kenneth A. Hipsky, P.E., LEED AP
243 Godfrey Road
Mystic, CT 06355
(860)-310-9827


MARK	DATE	DESCRIPTION

"ALTERATION OF THIS DOCUMENT EXCEPT BY A LICENSED PROFESSIONAL IS ILLEGAL."			
DESIGNED BY: KAH	DRAWN BY: ALL	CHECKED BY:	REVIEWED BY:
PROJECT No: CARM1902	DATE: 3/22/2021	SCALE:	AS SHOWN

CLIENT

CARMEL FIRE DEPARTMENT INC.

ADDITION/RENOVATION



94 GLENEIDA AVE,
CARMEL HAMLET NY, 10512

CONTRACT

**CONTRACT G
GENERAL CONSTRUCTION**

STATUS

BID SET

SHEET TITLE

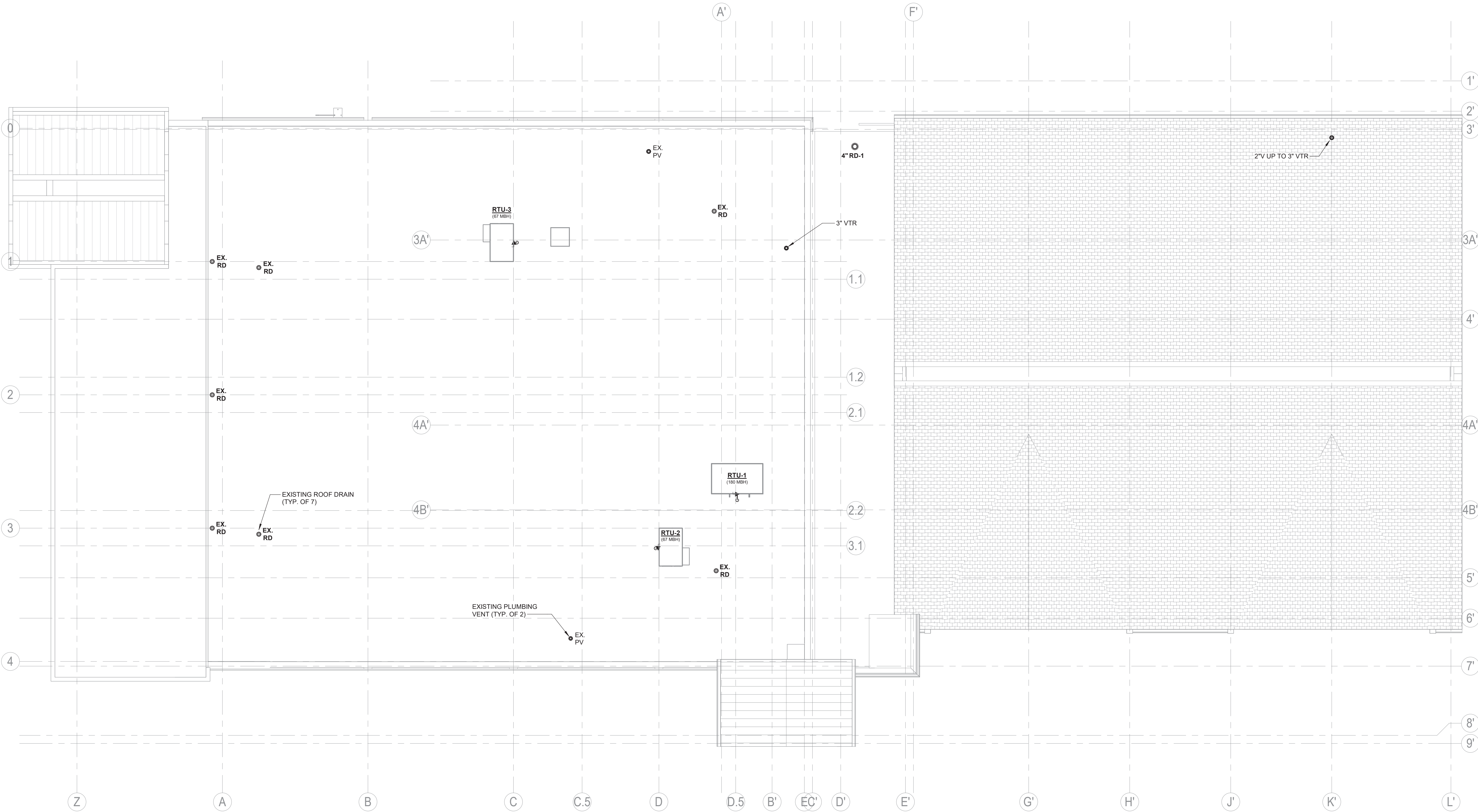
SECOND FLOOR DRAINAGE PLAN

DRAWING No.

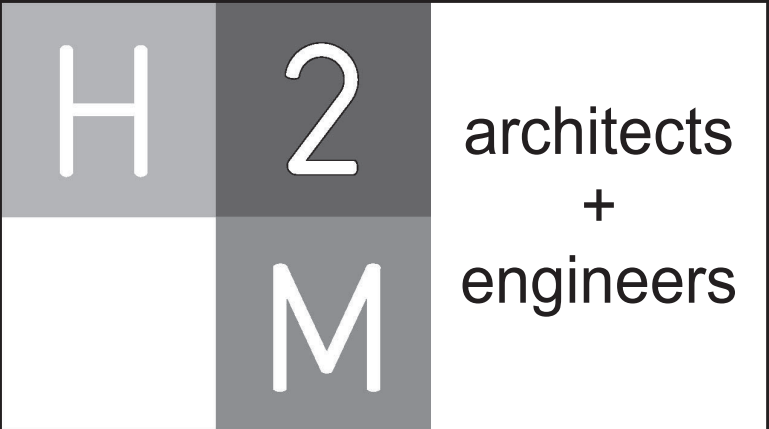
P 102

BIM 360://20-265 Carmel NY Fire Dept./MEP_20-265_CARMEL NY FIRE DEPT.rvt

3/22/2021 3:37:50 PM



1 PLUMBING ROOF PLAN
1/8" = 1'-0"



3 Lear Jet Lane, Suite 205
Latham, NY 12110
518.765.5105 • www.h2m.com

CONSULTANTS:
MEP: Kenneth A. Hipsky, P.E., LEED AP
243 Godfrey Road
Mystic, CT 06355
(860)-310-9827


MARK	DATE	DESCRIPTION

"ALTERATION OF THIS DOCUMENT EXCEPT BY A LICENSED PROFESSIONAL IS ILLEGAL."			
DESIGNED BY: KAH	DRAWN BY: ALL	CHECKED BY:	REVIEWED BY:
PROJECT No: CARM1902	DATE: 3/22/2021	SCALE:	AS SHOWN

CLIENT

CARMEL FIRE DEPARTMENT INC.

ADDITION/RENOVATION



94 GLENEIDA AVE,
CARMEL HAMLET NY, 10512

CONTRACT

**CONTRACT G
GENERAL CONSTRUCTION**

STATUS

BID SET

SHEET TITLE

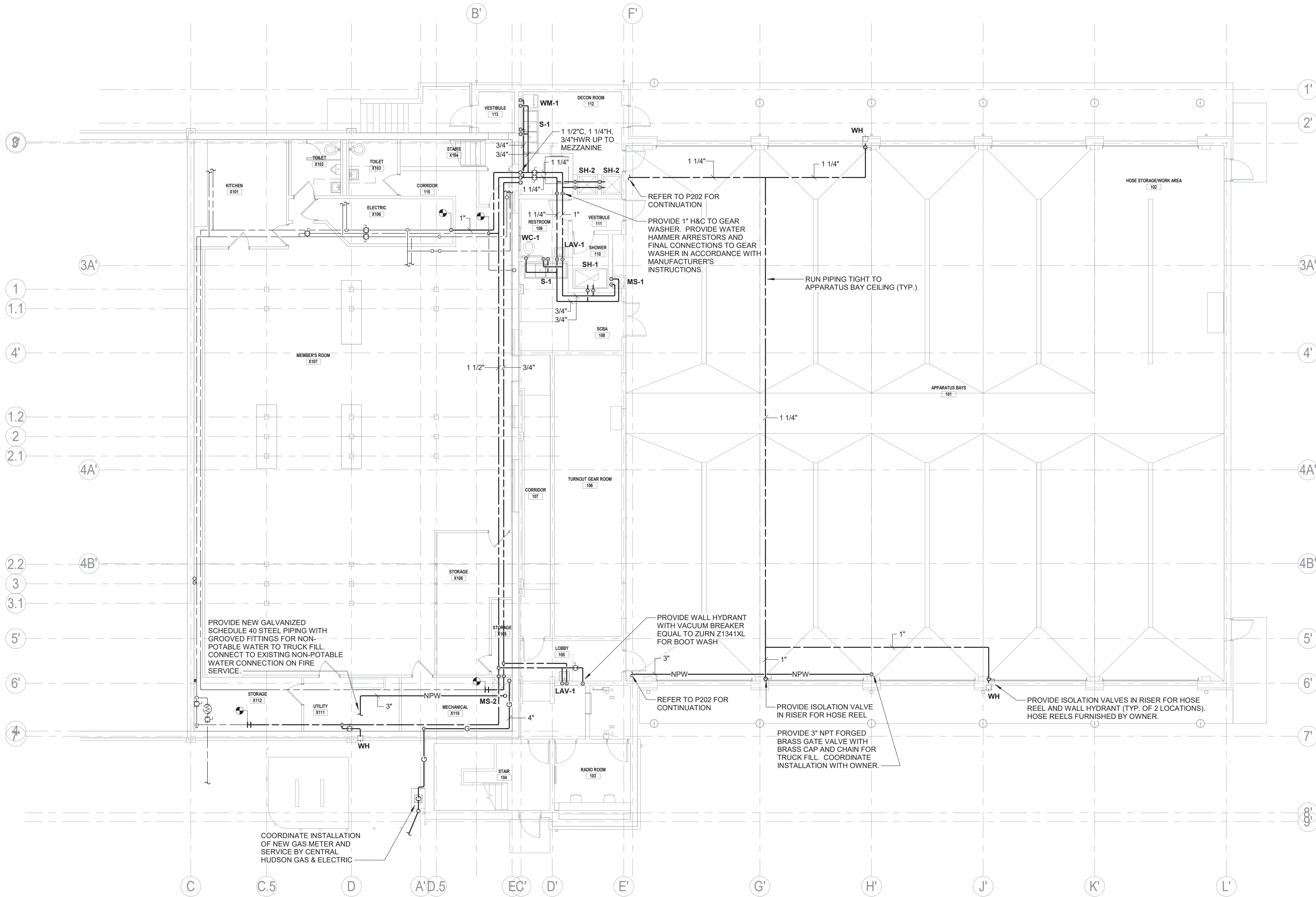
PLUMBING ROOF PLAN

DRAWING No.

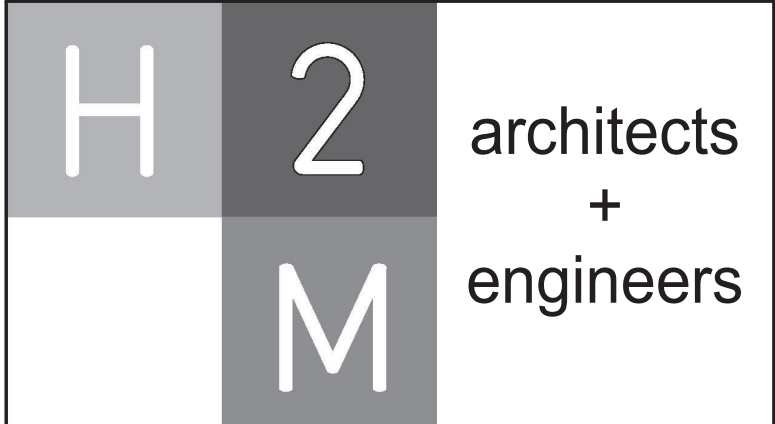
P 103

BIM 380/20-265 Carmel NY Fire Dept./MEP_20-265_CARMEL NY FIRE DEPT.rvt

3/22/2021 3:37:54 PM



1 FIRST FLOOR PLUMBING SUPPLY PLAN
1/8" = 1'-0"



3 Lear Jet Lane, Suite 205
Latham, NY 12110
518.765.5105 • www.h2m.com

CONSULTANTS:
MEP: Kenneth A. Hipsky, P.E., LEED AP
243 Godfrey Road
Mystic, CT 06355
(860)-310-9827


MARK	DATE	DESCRIPTION

ALTERATION OF THIS DOCUMENT EXCEPT BY A LICENSED PROFESSIONAL IS ILLEGAL.			
DESIGNED BY: KAH	DRAWN BY: ALL	CHECKED BY:	REVIEWED BY:
PROJECT No: CARM1902	DATE: 3/22/2021	SCALE:	AS SHOWN

CLIENT

CARMEL FIRE DEPARTMENT INC.

ADDITION/RENOVATION



94 GLENEIDA AVE,
CARMEL HAMLET NY, 10512

CONTRACT

**CONTRACT G
GENERAL CONSTRUCTION**

STATUS

BID SET

SHEET TITLE

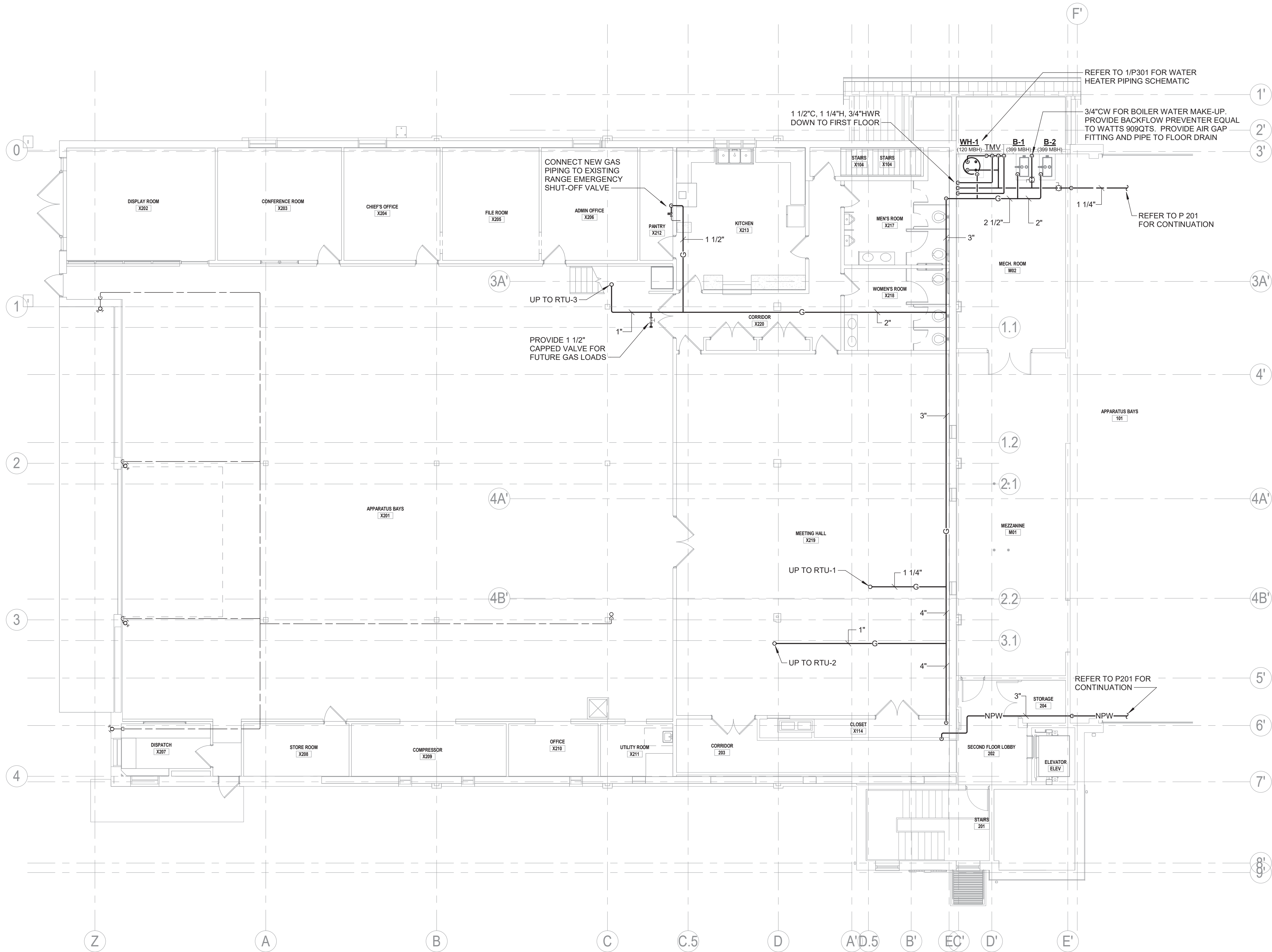
**FIRST FLOOR PLUMBING
SUPPLY PLAN**

DRAWING No.

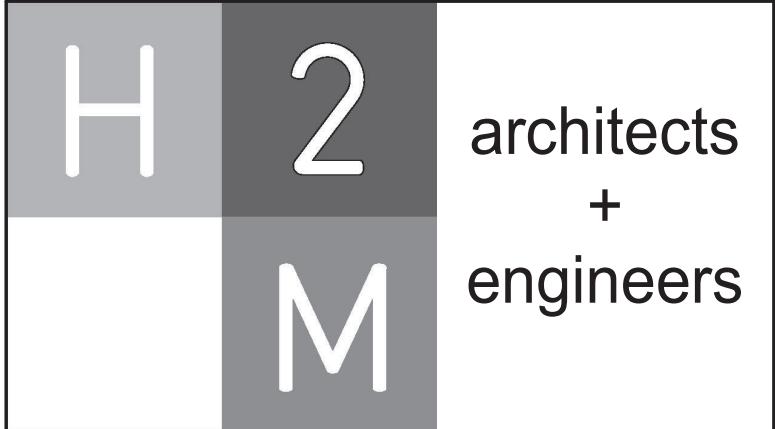
P 201

BIM 360//20-265 Carmel NY Fire Dept./MEP_20-265_CARMEL NY FIRE DEPT.rvt

3/22/2021 3:37:57 PM



1 SECOND FLOOR PLUMBING SUPPLY PLAN
1/8" = 1'-0"



3 Lear Jet Lane, Suite 205
Latham, NY 12110
518.765.5105 • www.h2m.com

CONSULTANTS:
MEP: Kenneth A. Hipsky, P.E., LEED AP
243 Godfrey Road
Mystic, CT 06355
(860)-310-9827


MARK	DATE	DESCRIPTION

ALTERATION OF THIS DOCUMENT EXCEPT BY A LICENSED PROFESSIONAL IS ILLEGAL.			
DESIGNED BY: KAH	DRAWN BY: ALL	CHECKED BY:	REVIEWED BY:
PROJECT No: CARM1902	DATE: 3/22/2021	SCALE:	AS SHOWN

CLIENT

CARMEL FIRE DEPARTMENT INC.

ADDITION/RENOVATION



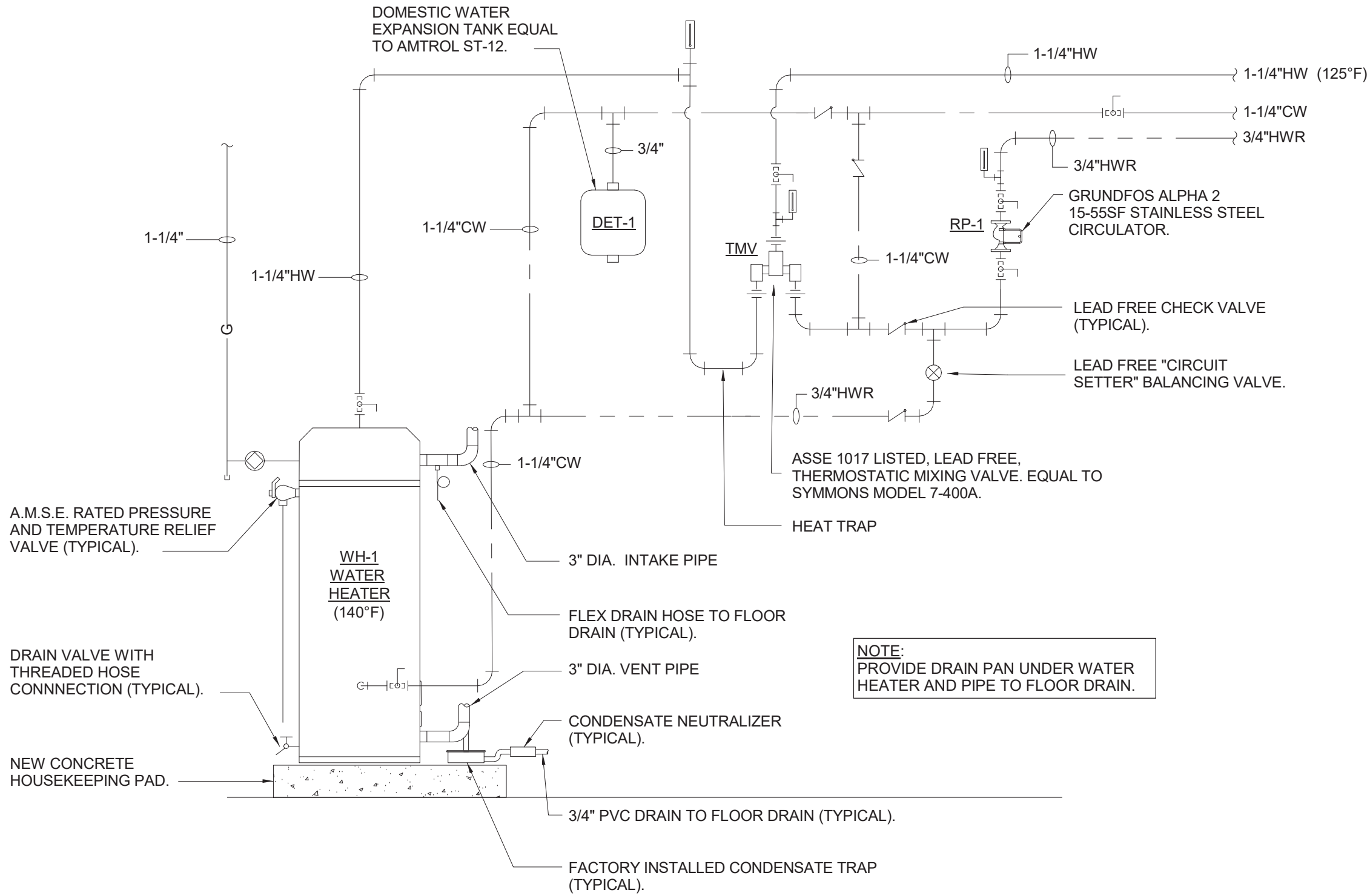
94 GLENEIDA AVE,
CARMEL HAMLET NY, 10512

CONTRACT	CONTRACT G GENERAL CONSTRUCTION
----------	------------------------------------

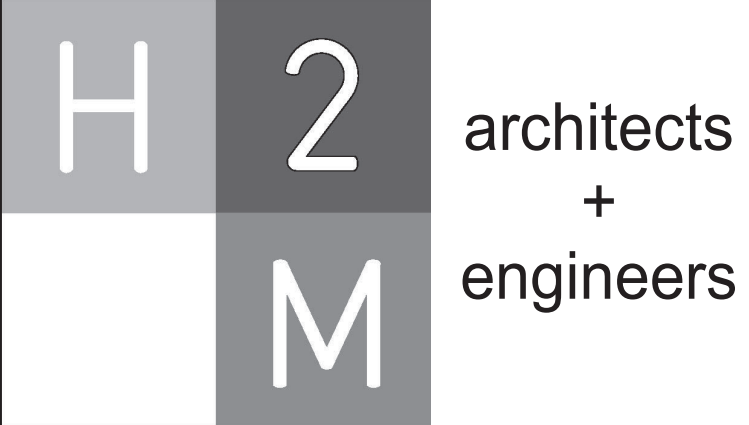
STATUS	BID SET
--------	---------

SHEET TITLE	SECOND FLOOR PLUMBING SUPPLY PLAN
-------------	--------------------------------------

DRAWING No.	P 202
-------------	-------



1 DOMESTIC HOT WATER SYSTEM PIPING SCHEMATIC
NOT TO SCALE



3 Lear Jet Lane, Suite 205
Latham, NY 12110
518.765.5105 • www.h2m.com

CONSULTANTS:
MEP: Kenneth A. Hipsky, P.E., LEED AP
243 Godfrey Road
Mystic, CT 06355
(860)-310-9827


MARK	DATE	DESCRIPTION

"ALTERATION OF THIS DOCUMENT EXCEPT BY A LICENSED PROFESSIONAL IS ILLEGAL."			
DESIGNED BY: KAH	DRAWN BY: ALL	CHECKED BY:	REVIEWED BY:
PROJECT No: CARM1902	DATE: 3/22/2021	SCALE: AS SHOWN	

CLIENT

CARMEL FIRE DEPARTMENT INC.

ADDITION/RENOVATION



94 GLENEIDA AVE,
CARMEL HAMLET NY, 10512

CONTRACT
CONTRACT G
GENERAL CONSTRUCTION

STATUS
BID SET

SHEET TITLE
PLUMBING DETAILS

DRAWING No.
P 301

PLUMBING FIXTURE SCHEDULE											
GENERAL NOTES: PIPE SIZES SHOWN ARE FOR SUPPLY AND DRAINAGE ONLY. PROVIDE SUPPLIES WITH SCREWDRIVER STOPS, WALL ESCUTCHEON, 17-GAUAGE SEMICAST "P" TRAPS WITH CLEANOUT PLUGS, PLUMBING FIXTURE SUPPORTS AND NECESSARY FITTINGS TO MAKE FINAL CONNECTION. REFER TO SPECIFICATIONS FOR EQUIVALENTS. REFER TO ARCHITECTURAL DRAWINGS FOR MOUNTING ELEVATION OF PLUMBING FIXTURES, CLEARANCE BELOW SINKS AND LAVATORIES AND OFFSET DRAIN LOCATIONS. OFFSET DRAINS SHALL BE OFFSET LEFT REAR OR OFFSET RIGHT REAR. COORDINATE MOUNTING HEIGHTS FOR CHILDREN AND ADULT FIXTURES WITH ARCHITECTURAL DRAWINGS.											
TAG	TYPE	ADA	MANUFACTURER	MODEL	COLD	HOT	SAN	VENT	DESCRIPTION	REMARKS	
LAV-1	LAVATORY	Yes	AMERICAN STANDARD	LUCERNE 0355.012	1/2"	1/2"	1 1/2"	1 1/2"	WALL-HUNG, VITREOUS CHINA, FRONT OVERFLOW, D-SHAPE BOWL, SELF-DRAINING DECK WITH CONTOURED BACK AND SIDE SPLASH SHIELDS, FAUCET LEGGE, 20"X18" NOMINAL DIMENSIONS. SYMMONS #S-20-2-G-1.5-W SINGLE LEVER FAUCET WITH GRID DRAIN ASSEMBLY AND 6" HANDLE. TRUEBRO #102-EZ INSULATION KIT.	PROVIDE LEONARD #170A-LF-BP THERMOSTATIC MIXING-VALVE UNDER LAVATORY. PIPE TEMPERED HOT (110DEG F.) AND COLD WATER TO FAUCET.	
MS-1	JANITOR SINK	No	ACORN	TSH-24	3/4"	3/4"	3"	2"	TERRAZZO-WARE ONE-PIECE PRECAST 24"X24" MOP SINK WITH 12" SHOLDERS, STAINLESS STEEL CAPS, 3" RUBBER DRAIN GASEKET. CHICAGO FAUCET #897-CP MANUAL WALL-MOUNT FAUCET WITH 8" BODY, VACUUM BREAKER SPOUT WITH PAIL HOOK AND WALL BRACE.		
MS-2	MOP SINK	No	ACORN	TRH-362406	3/4"	3/4"	3"	2"	TERRAZZO-WARE ONE-PIECE PRECAST 36"X24" MOP SINK WITH 6" SHOLDERS, STAINLESS STEEL CAPS, 3" RUBBER DRAIN GASEKET. CHICAGO FAUCET #897-CP MANUAL WALL-MOUNT FAUCET WITH 8" BODY, VACUUM BREAKER SPOUT WITH PAIL HOOK AND WALL BRACE.		
S-1	SCULLERY SINK	No	ELKAY	WNSF8230LR2	1/2"	1/2"	2"	2"	WELDBILT, 14 GAGUE TYPE 304 STAINLESS STEEL, 78"X27.5"X14", FLOOR MOUNT, DOUBLE COMPARTMENT SCULLERY SINK WITH 24" LEFT AND RIGHT DRAINBOARDS, 8" BACKSPLASH, CENTER DRAIN, AND TUBULAR LEGS. ELKAY #LK-24RT ROTARY LEVER OPERATED DRAIN FITTING WITH TAILPIECE. CHICAGO FAUCET#540-LDL9ABCP WALL-MOUNTED MANUAL SINK FAUCET WITH 8" BODY, 9.5" SWING SPOUT.	PIPE (2) 1 1/2" INDIRECT WASTE LINES FROM SINK TO FLOOR SINK.	
SH-1	SHOWER	Yes	N/A	N/A	1/2"	1/2"	2"	1 1/2"	SYMMONS 9603-PLR PRESSURE BALANCING MIXING VALVE WITH HAND SHOWER, 36" ADA GRAB BAR AND 60" FLEXIBLE METAL HOSE, INTEGRAL SERVICE STOPS, 2.5 GPM FLOW RESTRICTOR.		
SH-2	SHOWER	No	ACORN	SBS-36-3F	1/2"	1/2"	2"	1 1/2"	TERRAZZO-WARE ONE-PIECE PRECAST 36"X36" SHOWER BASE WITH 4" HIGH THRESHOLD, 2" RUBBER DRAIN GASKET. SYMMONS S-9601-P PRESSURE BALANCED SHOWER VALVE WITH INTEGRAL VOLUME CONTROL, SHOWER HEAD, INTEGRAL SERVICE STOPS, 2.5 GPM FLOW RESTRICTOR.		
WC-1	WATER CLOSET	Yes	SLOAN	ST-2029	1"	0"	4"	2"	ELONGATED FLOOR MOUNTED, VITREOUS CHINA, ADA TOILET. CHURCH 295CT TOILET SEAT. SLOAN ROYAL 111-1.6 MANUAL FLUSH VALVE.		

PLUMBING DRAINAGE SPECIALTY SCHEDULE					
TAG	TYPE	MANUFACTURER	MODEL	DESCRIPTION	REMARKS
FCO-1	FLOOR CLEANOUT	J. R. SMITH	#4032	CAST IRON CLEANOUT, WITH ROUND ADJUSTABLE NICKEL-BRONZE TOP (SQUARE TOP IN PORCELAIN TILED FLOORS) BRONZE PLUG AND VANDAL PROOF SCREWS.	
FCO-2	FLOOR CLEANOUT	J. R. SMITH	#4231M	CAST IRON CLEANOUT, WITH 6" ROUND EXTRA HEAVY DUTY DUCTILE IRON COVER, BRONZE PLUG AND VANDAL PROOF SCREWS.	
FD-1	FLOOR DRAIN	J. R. SMITH	#2005Y	CAST IRON BODY WITH FLASHING COLLAR, 6"DIA. ROUND (6" SQUARE IN PORCELAIN TILED FLOORS) NICKEL-BRONZE ADJUSTABLE STRAINER, VANDAL PROOF SCREWS. QUAD CLOSE TRAP SEAL. 2" PIPE SIZE UNLESS OTHERWISE INDICATED ON FLOOR PLANS.	
FD-2	FLOOR DRAIN	J. R. SMITH	#2131Y	CAST IRON DEEP BODY, AND FLASHING COLLAR 12" DIA. CAST IRON BAR GRATE. QUAD CLOSE TRAP SEAL. 2" PIPE SIZE UNLESS OTHERWISE INDICATED ON FLOOR PLANS.	
FS-1	FLOOR SINK	J. R. SMITH	#3004	10"DEEP 14 GAUGE TYPE 316 STAINLESS STEEL RECEPTOR BODY, 12"SQ. 1/2 GRATE, CAST TYPE 316 STAINLESS STEEL DOME BOTTOM STRAINER. 2" PIPE SIZE UNLESS OTHERWISE INDICATED ON FLOOR PLANS.	
RD-1	ROOF DRAIN	J. R. SMITH	#1015-CID-R-C	ADJUSTABLE ROOF DRAIN, CAST IRON BODY WITH COMBINED FLASHING CLAMP AND GRAVEL STOP, CAST IRON DOME, CAST IRON STANDPIPE, SUMP RECEIVER AND UNDER DECK CLAMP. DRAIN SIZE AS INDICATED ON ROOF PLAN.	
TD-1	TRENCH DRAIN	ABT, INC.	#2512AF	SEVEN (7) 39.19" (1 METER) PRECAST POLYESTER POLYMER CONCRETE PRESLOPED (0.6%) CHANNELS WITH RADIUS BOTTOM. #502 DUCTILE IRON GRATE (CLASS "C" LOADING), #510 ANCHOR FRAMES, #901 SERIES CATCH BASIN WITH FOUL AIR TRAP (ON END), #106 END PLATE AND #2224 INSTALLATION DEVICES.	
WM-1	WASHING MACHINE OUTLET BOX	OATEY	#38995	1/4 TURN BRASS HAMMER BALL VALVE, COPPER SWEAT CONNECTION, 2" DRAIN OPENING, 20GA STEEL BOX, 18GA STEEL FACEPLATE.	

PLUMBING WATER SPECIALTY SCHEDULE			
TAG	TYPE	MANUFACTURER / ITEM DESCRIPTION	REMARKS
WH	WALL HYDRANT (EXTERIOR)	J.R. SMITH #5509QT-NB, NICKEL BRONZE BOX, BRONZE NICKEL PLATED NON-FREEZE QUARTER TURN WALL HYDRANT WITH INTEGRAL VACUUM BREAKER, 3/4"HOSE CONNECTION "T" HANDLE KEY.	SEE ARCHITECTURAL DOCUMENTS FOR WALL THICKNESS
WHA	WATER HAMMER ARRESTOR	SIoux CHIEF "HYDRA-RESTER" SEAMLESS PRESSURE CHAMBER, SPUN CLOSED COPPER TUBE PERMANENTLY SEALED AT 60 PSIG. SHALL CONFORM TO ASME/ANSI STANDARDS AND PDI CERTIFIED. INSTALL PER FACTORY RECOMMENDATION. LIFETIME WARRANTY.	PROVIDE AT QUICK CLOSING VALVES.

GAS-FIRED WATER HEATER SCHEDULE													
ID	MANUFACTURER	MODEL NO.	GAS BURNER		WATER SIDE				THERMAL EFFICIENCY	ELECTRICAL DATA			REMARKS
			INPUT (BTU/H)	FUEL TYPE	STORAGE RECOVERY @ 100°F (GPH)	VOL (gal)	INLET	OUTLET		FLA	VOLT	PH	
WH-1	A. O. SMITH	BTH-120	120,000	NG	138.0	60.0	1 1/2"	1 1/2"	95	5 A	120 V	1	
NOTES: 1. PROVIDE CONDENSATE NEUTRALIZATION KIT.													

SUMP PUMP SCHEDULE									
ID	MANUFACTURER	MODEL NO.	PUMP		MOTOR		VOLT	PH	REMARKS
			FLOW (GPM)	HEAD (FT)	POWER (hp)	RPM			
SP-1	ZOELLER	98	50.00	13.0	0.5	1725	120 V	1	

H

2

M

architects
+
engineers

3 Lear Jet Lane, Suite 205
Latham, NY 12110
518.765.5105 • www.h2m.com

CONSULTANTS:

MEP: Kenneth A. Hipsky, P.E., LEED AP
243 Godfrey Road
Mystic, CT 06355
(860)-310-9827

MARK	DATE	DESCRIPTION


"ALTERATION OF THIS DOCUMENT EXCEPT BY A LICENSED PROFESSIONAL IS ILLEGAL."

DESIGNED BY: KAH	DRAWN BY: ALL	CHECKED BY:	REVIEWED BY:
PROJECT NO: CARM1902	DATE: 3/22/2021	SCALE:	AS SHOWN

CLIENT

CARMEL FIRE
DEPARTMENT INC.

ADDITION/RENOVATION



94 GLENEIDA AVE,
CARMEL HAMLET NY, 10512

CONTRACT

CONTRACT G
GENERAL CONSTRUCTION

STATUS

BID SET

SHEET TITLE

PLUMBING SCHEDULES

DRAWING No.

P 501