

SYMBOL LEGEND

NEW PANEL. REFER TO PANEL SCHEDULES AND RISER DIAGRAM FOR ADDITIONAL INFO.

REQUIRED CLEAR SPACE. MIN. 30"W x 36"D

20A, 120V, TAMPER RESISTANT DUPLEX RECEPTACLE TO CIRCUIT INDICATED.

20A, 120V, TAMPER RESISTANT QUAD. RECEPTACLE TO CIRCUIT INDICATED.

CODE SIZED JUNCTION BOX

CODE SIZED DISCONNECT SWITCH. - "F" INDICATES CURRENT LIMITING FUSES.

SFHP FRACTIONAL HP MOTOR STARTER W/ THERMAL OVERLOAD

HOMERUN TO CIRCUIT INDICATED

CAT. 6 DATA JACK, MOUNTED 18" A.F.F. WITH CATEGORY 6 CABLE(S) EXTENDING FROM THE DATA JACK TO THE CLOSEST IDF/MDF CLOSET. CABLE(S) SHALL BE SLEEVED WITH 3/4" MIN. INTO CEILING CAVITY WHERE INSTALLED CONCEALED IN PARTITION WALLS OR FLOORS.

- "F" INDICATES NUMBER OF PORTS/HOMERUNS. WHEN MORE THAN ONE, TERMINATE IN A MULTI-SOCKET RJ45 FACEPLATE

- "W" INDICATES A SINGLE PORT MOUNTED 60" A.F.F. FOR WALL MOUNTED PHONE.

- "C" INDICATES A SINGLE PORT MOUNTED 12" ABOVE THE DOOR FOR A FUTURE CLOCK.

G/GFCI GROUND FAULT CURRENT INTERRUPTER

CTR INSTALLED ABOVE COUNTER HEIGHT. REFER TO ARCHITECTURAL DRAWINGS FOR ADDITIONAL INFO.

WP WEATHERPROOF (RECEPTACLE MOUNTED IN AND "IN-USE" COVER

SYMBOLS FOR DWGS E2.01 & E2.02

Fire Alarm Symbol Legend

SYMBOLS FOR DWGS E2.01 & E2.02

NOTE:
LIGHT LINES INDICATE EXISTING TO REMAIN.
DARK LINES INDICATE NEW WORK.

COMBINATION SPEAKER/STROBE

"CD" - MINIMUM CANDELA RATING

"W" - MINIMUM WATTAGE TAP

"C" - CEILING MOUNTED (WALL MOUNTED IF NOT INDICATED)

CEILING MOUNTED STROBE

"CD" - MINIMUM CANDELA RATING

PHOTOELECTRIC SMOKE DETECTOR

HEAT DETECTOR - COMBO ROR/FIXED TEMPERATURE

DUCT SMOKE DETECTOR. LOCATE IN DUCT WITHIN AFTER PENETRATION INTO CONDITIONED SPACE. COORDINATE INSTALLATION WITH MC. PROVIDE A REMOTE TEST STATION IN AN ACCESSIBLE LOCATION.

MANUAL PULL STATION WITH LEXAN GUARD WITH AN INTEGRAL HORN. MOUNT PULL STATION ON MANUF.'S SURFACE MOUNT RED BACKBOX WHEN SURFACE MTD.

120V MAGNETIC DOOR HOLDER. COORDINATE WITH DOOR CONTRACTOR. DOORS SHALL SHUT UPON ACTIVATION OF THE FIRE ALARM SYSTEM.

ADDRESSABLE MODULE

"I" - INPUT

"O" - OUTPUT

ALL DEVICES SHALL BE UL LISTED FOR USE WITH THE EXISTING NOTIFIER FACP. THE CONTRACTOR SHALL CONNECT TO EXISTING SLG/NAC LOOPS AS REQUIRED AND AS PER MANUFACTURER'S INSTRUCTIONS USING PLENUM RATED CABLE.

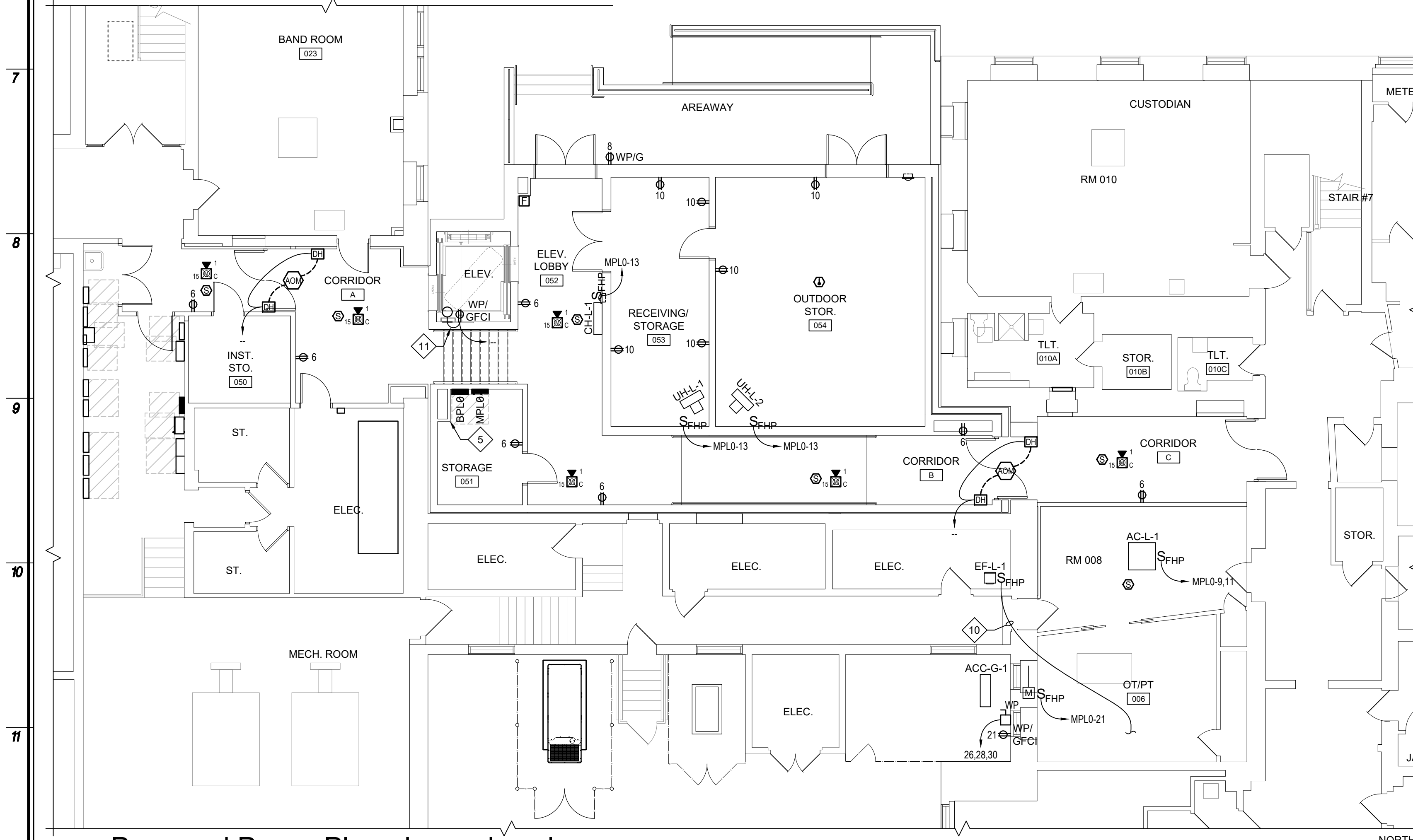
CONTRACTOR SHALL SUPPLY AND INSTALL A SPEAKER CONTROL INTERFACE TO ALLOW FOR SPEAKER MESSAGES WITHIN THE ADDITION.

REFER TO DWG A0.01 FOR AREAS OF WORK AND DEFINED AREAS OF EXISTING AND NEW CONSTRUCTION AREAS.

Proposed Power Plan - First Floor

3/16" = 1'-0"

ALL CIRCUITS IN THIS AREA REFER TO PANEL BPL0 UNLESS NOTED OTHERWISE

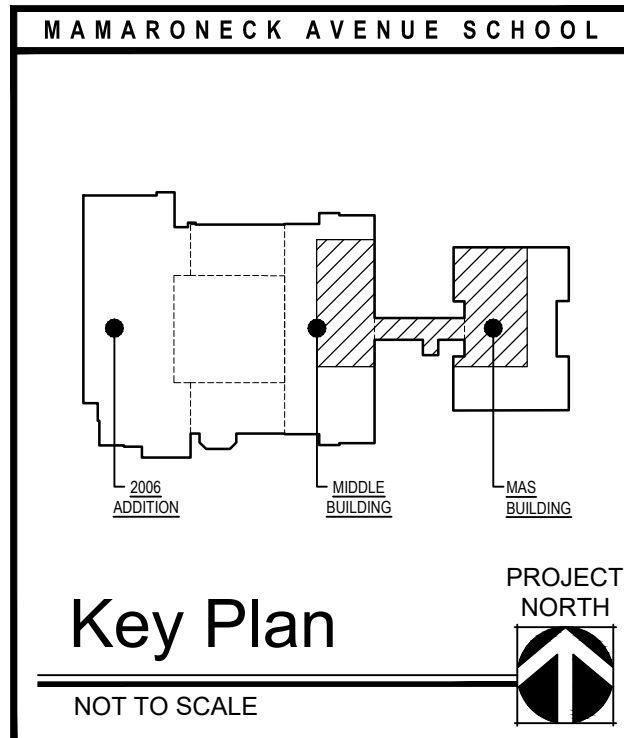


Proposed Power Plan - Lower Level

1/8" = 1'-0"

ALL CIRCUITS IN THIS AREA REFER TO PANEL BPL0 UNLESS NOTED OTHERWISE

PANEL SCHEDULE - PANEL MPL0										FED FROM MDP			208/120V			
CT#	Load Description	Type	OCPD		Current	Conductors		Ground	Raceway	Voltage	Load kVA	Load per Phase(A)			Voltage Drop %	
			Poles	Rated		Neutral						Phase A	Phase B	Phase C		
1/3	AC-3-1 -2 -3	Std	2	20A	(2) 12 ga.	none	(1) 12 ga.	3/4 in. EMT	208	0.67		3.59	3.59		0.94%	
2/4	HRU-3-1	Std	2	20A	(2) 12 ga.	none	(1) 12 ga.	3/4 in. EMT	208	1.52		8.1	8.1		1.66%	
5/7	AC-2-1 -2 -3	Std	2	20A	(2) 12 ga.	none	(1) 12 ga.	3/4 in. EMT	208	0.67		3.59		3.59	0.94%	
6/8	HRU-2-1	Std	2	20A	(2) 12 ga.	none	(1) 12 ga.	3/4 in. EMT	208	1.52		8.1		8.1	1.66%	
9/11	AC-1-1 -2 -3 -4 & L-1	Std	2	20A	(2) 12 ga.	none	(1) 12 ga.	3/4 in. EMT	208	0.77			4.1	4.1	1.02%	
10/12	HRU-1-1	Std	2	20A	(2) 12 ga.	none	(1) 12 ga.	3/4 in. EMT	208	1.52			8.1	8.1	1.66%	
13	CH-1-1 -L-1 & UHL-1 -2	Std	1	20A	(1) 12 ga.	(1) 12 ga.	(1) 12 ga.	3/4 in. EMT	120	0.28	2.4				0.96%	
14	3rd FL. MOTORIZED DAMPERS	Std	1	20A	(1) 12 ga.	(1) 12 ga.	(1) 12 ga.	3/4 in. EMT	120	0.43	3.97				1.39%	
15	EF-R-1 & ROOFTOP RECEPT	Std	1	20A	(1) 12 ga.	(1) 12 ga.	(1) 12 ga.	3/4 in. EMT	120	0.22			1.99		0.96%	
16	2nd FL. MOTORIZED DAMPERS	Std	1	20A	(1) 12 ga.	(1) 12 ga.	(1) 12 ga.	3/4 in. EMT	120	0.43			3.97		1.39%	
17	CH-3-1 -2 -3	Std	1	20A	(1) 12 ga.	(1) 12 ga.	(1) 12 ga.	3/4 in. EMT	120	1				9.3	3.51%	
18	1st FL. MOTORIZED DAMPERS	Std	1	20A	(1) 12 ga.	(1) 12 ga.	(1) 12 ga.	3/4 in. EMT	120	0.43				3.97	1.39%	
19	CH-2-1 -2 -3	Std	1	20A	(1) 12 ga.	(1) 12 ga.	(1) 12 ga.	3/4 in. EMT	120	1		9.3			3.51%	
20/22/24	ACC-R-1	Std	3	70A	(3) 4 ga.	none	(1) 8 ga.	1 in. EMT	208	18.9		58.3	58.3	58.3	1.91%	
21	ACC-G-1 RECEPT & MD	Std	1	20A	(1) 12 ga.	(1) 12 ga.	(1) 12 ga.	3/4 in. EMT	120	0.22			1.99		0.96%	
25																
26/28/30	ACC-G-1	Std	3	25A	(3) 10 ga.	none	(1) 10 ga.	3/4 in. EMT	208	5.35		16.5	16.5	16.5	1.83%	
27																
29																
31-42																
Total Circuits			26					Connected Loads: 34,910 VA			113.1 A			106.1 A	111.1 A	
Voltage: 120 / 208 Circuits: 26 / 42 Neutral Buss: Yes Ground Buss: Yes Buss Capacity: 200 A NEMA Type 1																
Main Connection: breaker Load kVA: 35 OCPD Size: 200A OCPD Type: Std Location: Remarks: 22kA SCCR																
3-Phase Connection																
Voltage Drop % for 50 Feet is 0.37%																
Raceway 2 in. dia. EMT																
			Current	Neutral	Ground											
			(3) 3/0 ga. THHN	(1) 3/0 ga. THHN	(1) 6 ga. THHN											



Date: 1/10/20

Checked: BH

Drawn: MH

MICHAEL J. MCGOVERN, R.A.

REGISTERED ARCHITECT

License No. 022257-1

Revisions:

ISSUE TO BEO

11/23/20

UNAUTHORIZED ALTERATIONS OR ADDITIONS TO THIS DOCUMENT IS A VIOLATION OF SECTION 2209 OF THE NEW YORK STATE EDUCATION LAW. THESE DOCUMENTS REMAIN THE EXCLUSIVE PROPERTY OF THE ENGINEER, AND MAY NOT BE USED FOR ANY PURPOSE WHATSOEVER WITHOUT THE WRITTEN CONSENT OF THE ENGINEER.

LAN ASSOCIATES

engineering • planning • architecture • surveying

252 MAIN STREET, GOSHEN, NEW YORK 10924 (845) 815-0350

PROPOSED POWER PLANS

2019 BOND REFERENDUM

MAMARONECK AVENUE ELEMENTARY SCHOOL

MAMARONECK UNION FREE SCHOOL DISTRICT

850 MAMARONECK AVENUE, MAMARONECK, NY 10543

Job No. 4,1092.72.2

File No. 10927202E201

NYSED PROJECT # 66-07-01-03-0-004-030

E2.01

P:\100-LAN LLP\1000-1092.72\2022\DWG\10927202E201.dwg, E201, 11/30/2020 11:41:52 AM, Mjcm