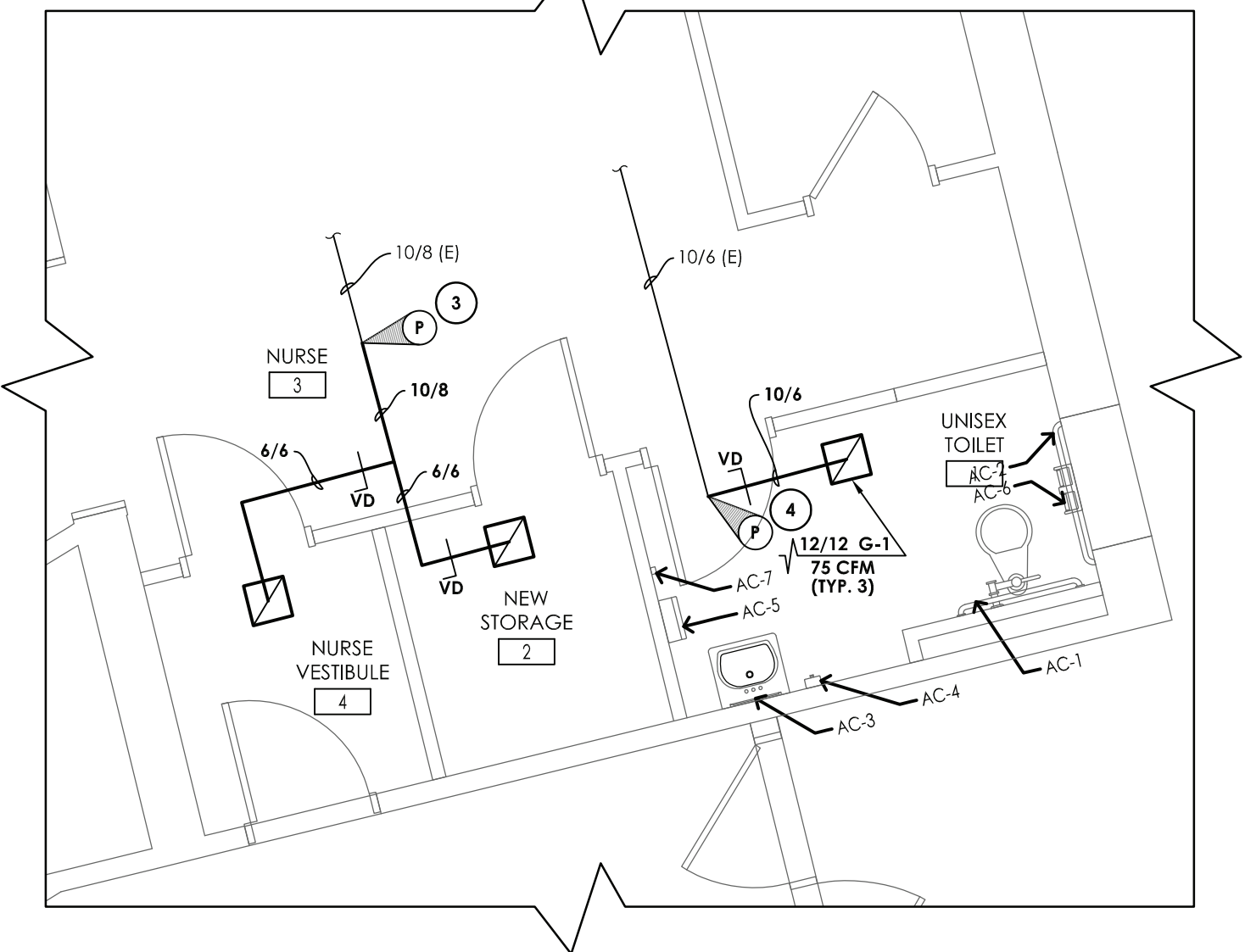
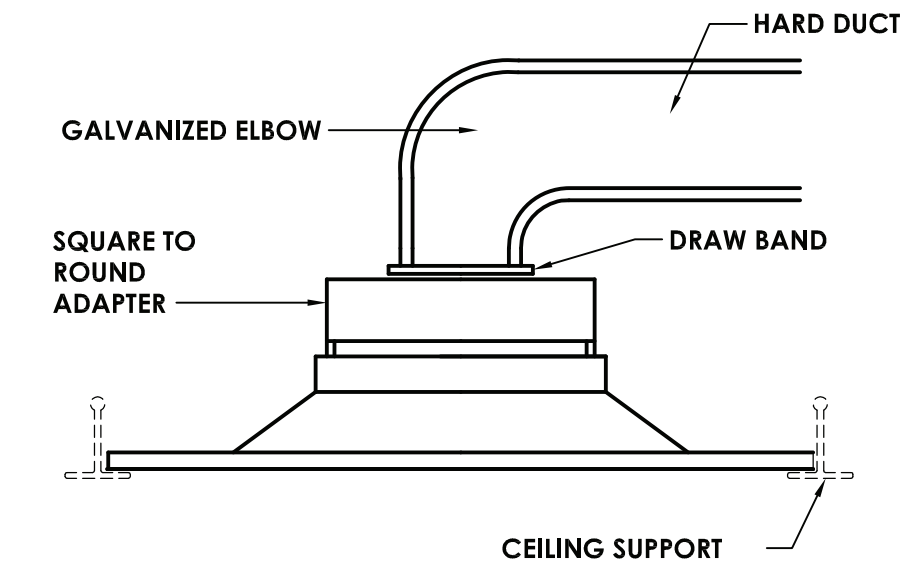


1
H200
TOILET ROOM DEMOLITION PLAN
SCALE: 1/4" = 1'-0"



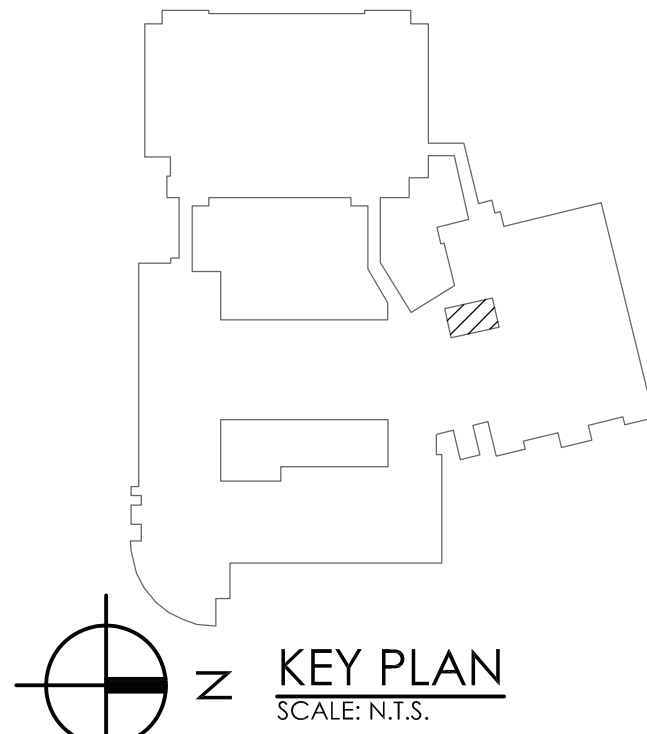
2
H200
TOILET ROOM NEW WORK PLAN
SCALE: 1/4" = 1'-0"



3
H200
HARD DUCT EXHAUST GRILLE DETAIL
NOT TO SCALE

REGISTERS, GRILLES, AND DIFFUSERS						
MARK	APPLICATION	MATERIAL	TYPE	FINISH	DESIGN EQUIP.	REMARKS
G-1	RETURN/EA	STEEL	LAY-IN	WHITE	PRICE \$30	-

- KEY NOTES:**
- 1 REMOVE EXISTING GRILLE AND DUCTWORK TO POINT INDICATED. PREPARE DUCTWORK FOR CONNECTION TO NEW.
 - 2 REMOVE EXISTING EXHAUST GRILLE. PREPARE DUCTWORK FOR NEW GRILLE.
 - 3 PROVIDE NEW GRILLE AND DUCTWORK. JOG DUCTWORK TO MISS WALL RELOCATION.
 - 4 PROVIDE NEW GRILLE AS SCHEDULED. CONNECT TO EXISTING DUCTWORK.



CPLteam.com
ARCHITECTURE • ENGINEERING • PLANNING

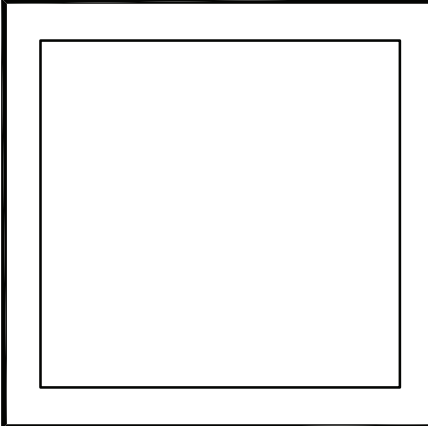
332 NY-100
SOMERS, NEW YORK 10589
TEL (914) 276-0777
FAX (914) 276-0779

REVISIONS			
NO.	DATE	BY	DESCRIPTION
1	11/30/2020	UJ	CG SED 100% CONSTRUCTION DOCUMENTS SUBMISSION
2	01/07/2021	-	ADDENDUM # 1
3	03/29/2021	JG	ISSUED FOR BID

ENVIRONMENTAL CONSULTANT

ADELAIDE ENVIRONMENTAL
HEALTH ASSOCIATES INC.
1511 ROUTE 22, SUITE C24
BREWSTER, NY 10509

TEL. 845. 278. 7710
FAX. 845.278.7750



CARMEL CENTRAL SCHOOL DISTRICT
81 SOUTH STREET P.O. BOX 296, PATERSON, NEW YORK 12563

CARMEL HIGH SCHOOL SED#: 48.01.02.06.0.003.022
GEORGE FISCHER MIDDLE SCHOOL SED#: 48.01.02.06.0.008.018
MATTHEW PATERSON SCHOOL SED#: 48.01.02.06.0.010.013
KENT ELEMENTARY SCHOOL SED#: 48.01.02.06.0.001.017
KENT PRIMARY SCHOOL SED#: 48.01.02.06.0.004.016

DATE	DRAWN	CHECKED
11/30/2020	ZBH	JJM
SCALE	AS NOTED	
SHEET TITLE		
HVAC DEMOLITION, NEW WORK, DETAILS, AND SCHEDULES PLAN		

PROJECT NUMBER
70019.00

**HS
H200**
DRAWING NUMBER