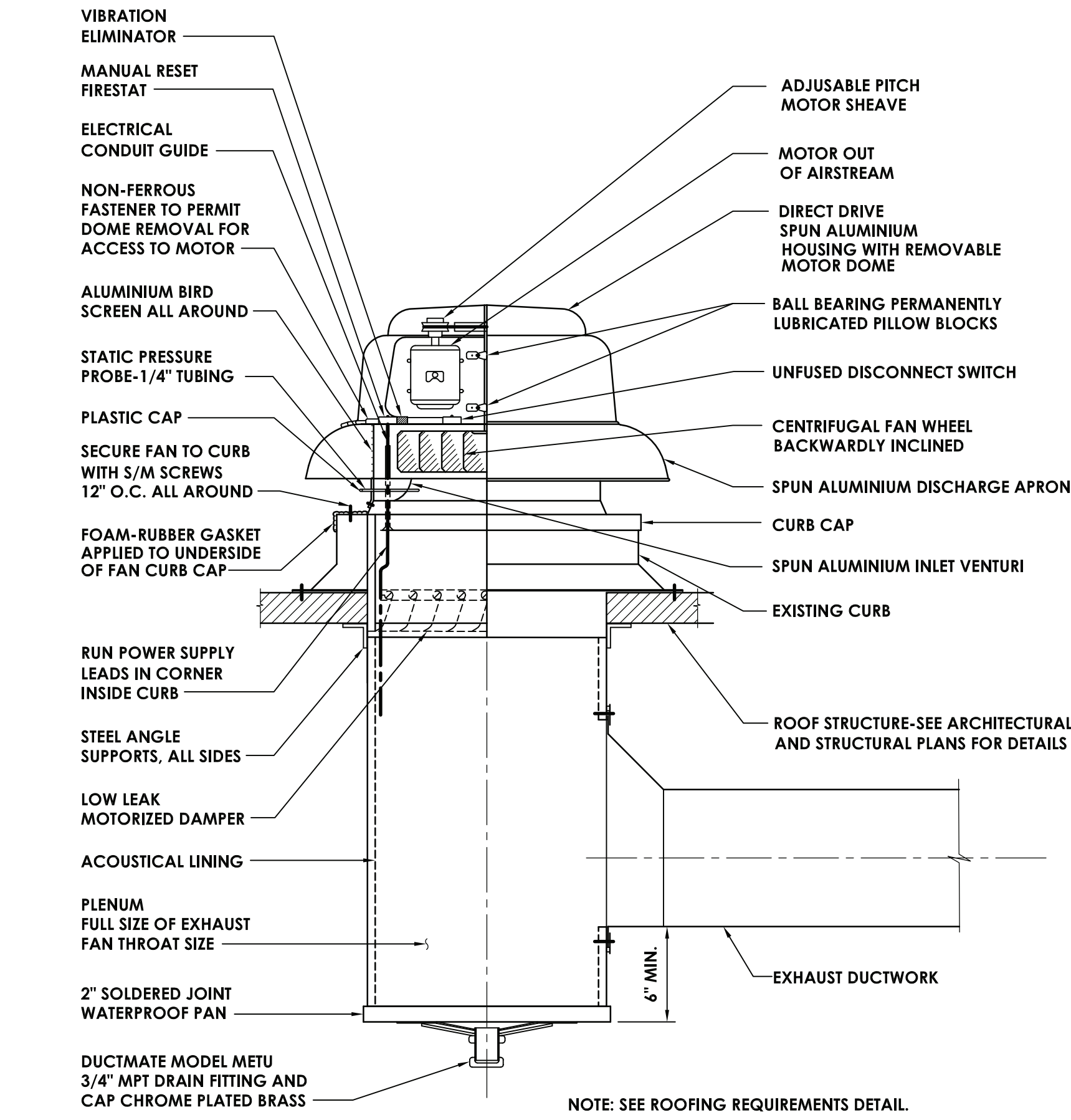
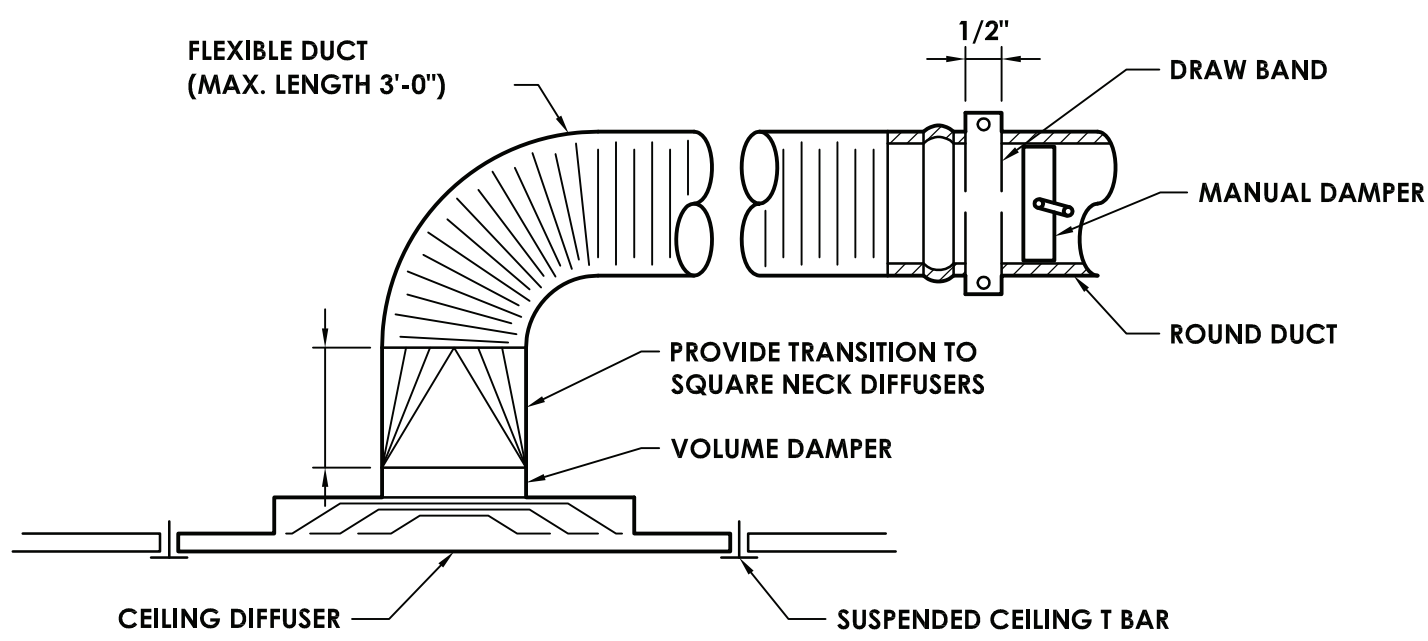


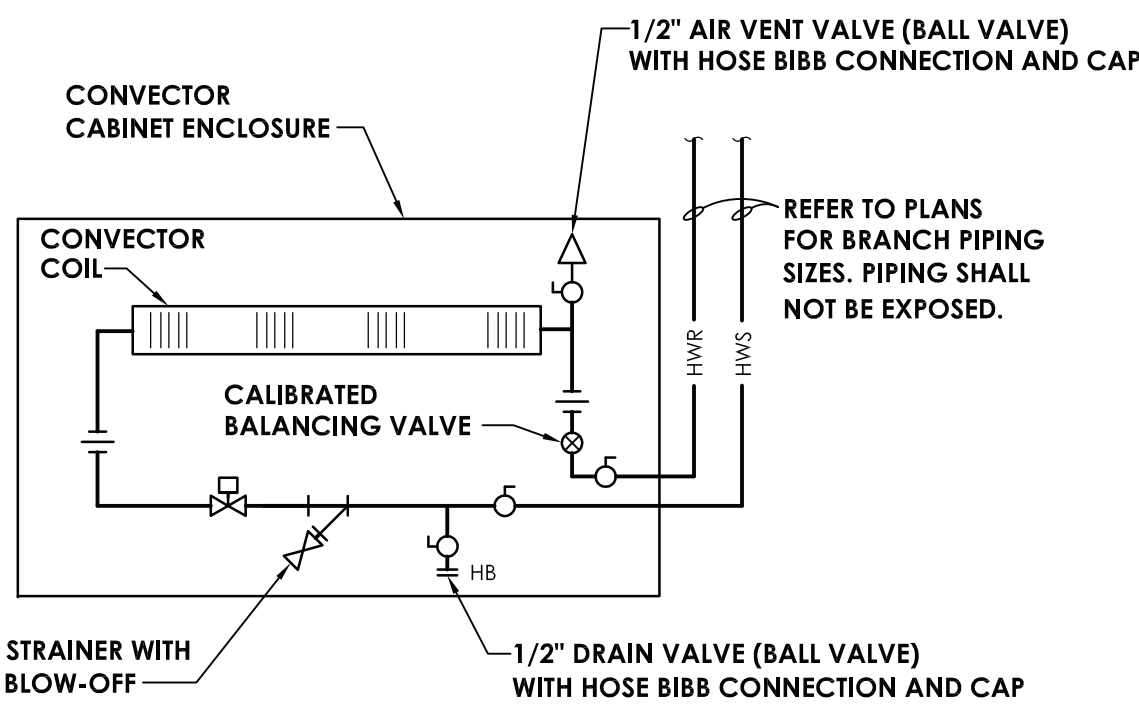
Drawing Name: \\corkpatterson\local\dfs\Projects\3\Projects\3\Projects\Carmel Central School District\CAD\AutoCAD\MECH\H2\KP-H203.dwg
Date last accessed: 3/24/2021 8:31 AM
Date last plotted: 3/24/2021 9:52 AM
Plotted By: James Masula



5 EXHAUST FAN DETAIL
H203 NOT TO SCALE



6 DIFFUSER DETAIL
H203 NOT TO SCALE

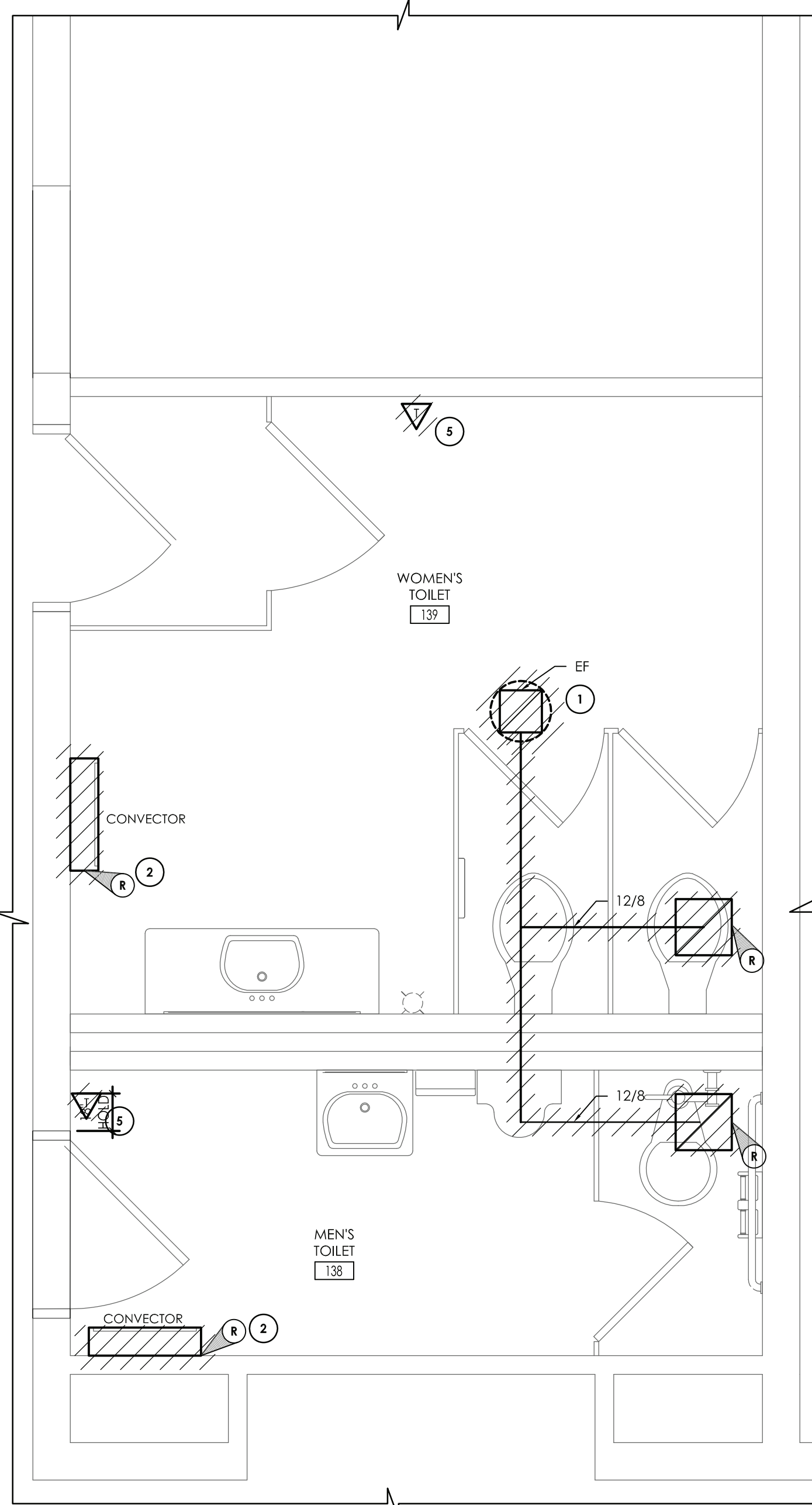


7 CONVECTOR DETAIL
H203 NOT TO SCALE

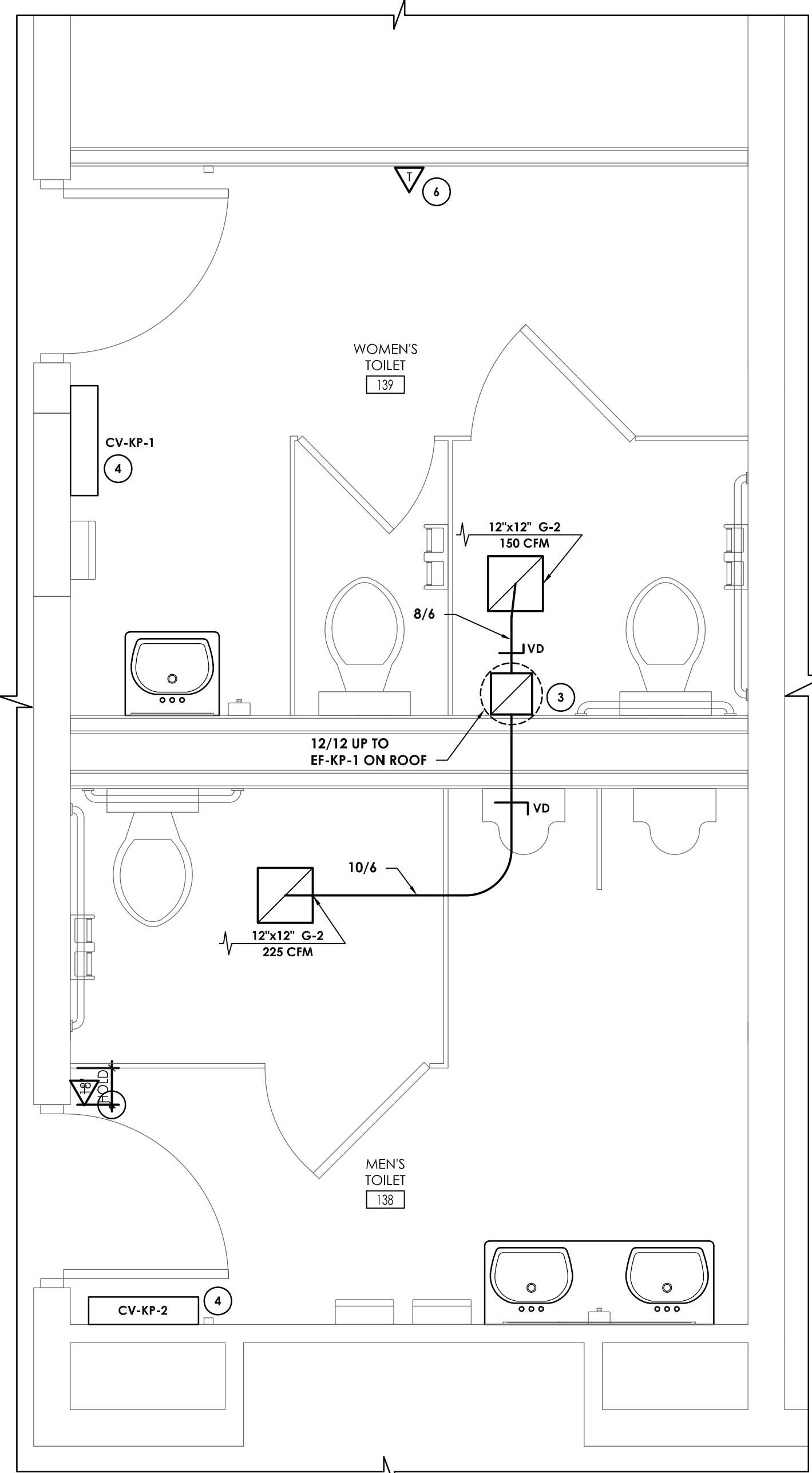
REGISTERS, GRILLES, AND DIFFUSERS						
MARK	APPLICATION	MATERIAL	TYPE	FINISH	DESIGN EQUIP.	REMARKS
G-2	RETURN/EA	STEEL	SURFACE MOUNT	WHITE	PRICE 530	-

CONVECTOR SCHEDULE							
MARK	MBH	LENGTH	HEIGHT	DEPTH	GPM	TYPICAL UNIT MFG & MODEL NO.	REMARKS:
CV-KP-1	3960	36	24	4.25	0.5	VULCAN SF-A	*
CV-KP-2	3960	36	24	4.25	0.5	VULCAN SF-A	*

FAN SCHEDULE												
MARK	LOCATION	SERVICE	TYPE	ROOF OPENING (IN.)	CFM	SP IN W.G.	RPM	ELECTRICAL DATA			TYPICAL UNIT MFG & MODEL NO.	REMARKS:
								BHP / HP	VOLTS	PHASE		
EF-KP-1	ROOF	TOILETS	DOWN BLAST	14.5x14.5	375	0.5	1144	0.07 / 0.25	120	1	GREENHECK GB-101	1,2,3
EF-KP-2	ROOF	TOILETS	DOWN BLAST	14.5x14.5	150	0.35	1127	0.06 / 1/6	120	1	GREENHECK GB-071	1,2,3
<div>REMARKS:</div> <div>1. PROVIDE DISCONNECT.</div> <div>2. ALUMINUM BIRD SCREEN.</div> <div>3. HINGED BASE.</div>												



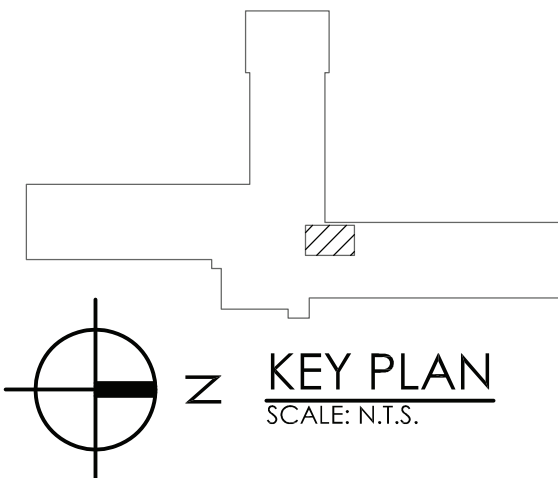
1 TOILET ROOMS #138 & #139 REMOVAL PLAN
H203 SCALE: 1/2" = 1'-0"



2 TOILET ROOMS #138 & #139 CONSTRUCTION PLAN
H203 SCALE: 1/2" = 1'-0"

KEY NOTES:

- 1 REMOVE EXISTING ROOF-MOUNTED EXHAUST FAN AND ASSOCIATED DUCTWORK AND GRILLES. FIELD VERIFY CURB SIZE FOR NEW FAN.
- 2 REMOVE EXISTING CONVECTOR. PREPARE PIPING AND CONTROLS FOR NEW UNIT.
- 3 PROVIDE NEW EXHAUST FAN. MOUNT TO EXISTING CURB. BALANCE FAN FOR NEW AIRFLOW.
- 4 EXTEND PIPING AND CONTROLS TO NEW CONVECTOR. COORDINATE WITH GENERAL CONTRACTOR FOR FLOOR/WALL CUTS.
- 5 REMOVE EXISTING TEMPERATURE CONTROLS. SAVE FOR RE-INSTALLATION.
- 6 RE-INSTALL SALVAGED TEMPERATURE CONTROLS.



CPLteam.com
ARCHITECTURE • ENGINEERING • PLANNING
332 NY-100
SOMERS, NEW YORK 10589
TEL (914) 276-0777
FAX (914) 276-0779

REVISIONS		NO.	DATE	BY	CHKD	DESCRIPTION
		1	11/30/2020	U	CG	SED 100% CONSTRUCTION DOCUMENTS SUBMISSION
		2	01/07/2021	JG	JP	ADDENDUM #1
		3	03/29/2021	JG	JP	ISSUED FOR BID

ENVIRONMENTAL CONSULTANT
ADELAIDE ENVIRONMENTAL
HEALTH ASSOCIATES INC.
1511 ROUTE 22, SUITE C-24
BREWSTER, NY 10509
TEL. 845.278.7710
FAX. 845.278.7750

CARMEL CENTRAL SCHOOL DISTRICT
81 SOUTH STREET, P.O. BOX 294, PATERSON, NEW YORK 12563
CARMEL HIGH SCHOOL SED#: 48.01.02.06.0.003.022
GEORGE FISCHER MIDDLE SCHOOL SED#: 48.01.02.06.0.008.018
MATTHEW PATERSON SCHOOL SED#: 48.01.02.06.0.010.013
KENT ELEMENTARY SCHOOL SED#: 48.01.02.06.0.001.017
KENT PRIMARY SCHOOL SED#: 48.01.02.06.0.004.016

DATE	DRAWN	CHECKED
11/30/2020	ZBH	JJM
SCALE	AS NOTED	
SHEET TITLE		
HVAC DEMOLITION, NEW WORK, DETAILS, AND SCHEDULES PLAN		

PROJECT NUMBER
70019.00
KP
H203
DRAWING NUMBER